

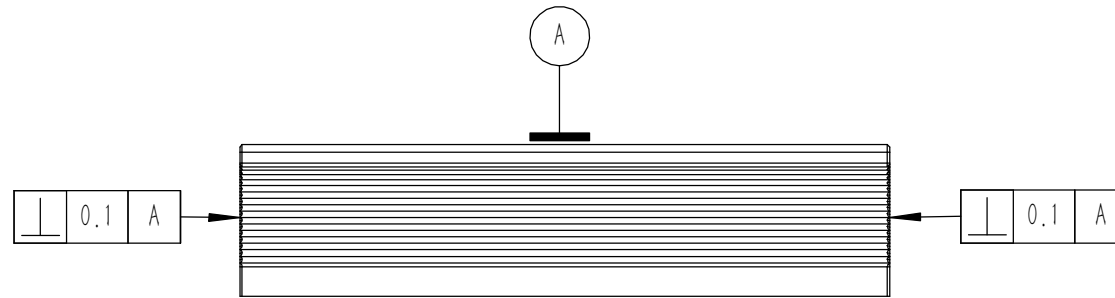
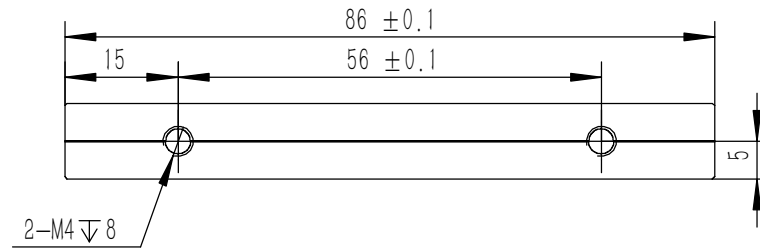
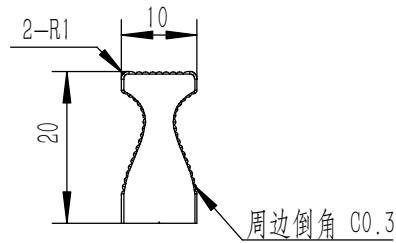
序号	图号	名称	材料	数量	单重	备注
19	YG-C18A-0000-002	后面板	5052-H32	1	0.511	
18	YG-C18A-0000-006	组合侧板 2U-50	6063-T5	2	0.093	
17	GB-T-819.1-2000-C-NI-M3X6	碳钢镀锌十字沉头螺丝M3X6	普通碳钢	16	0.0004	
16	YG-C18A-0000-005	组合侧板 2U-100	6063-T5	4	0.177	
15	YG-C18A-0000-009	侧板固定件 2U	6063-T5	4	0.030	
14	YG-C18A-0000-001	前面板	5052-H32	1	0.569	
13	S-M3-1-ZI	压铆螺母镀白锌M3X1	普通碳钢	8	0.3750	
12	YG-C18A-0000-004	垫板	电解板	1	0.885	
11	GB-T-70.3-2000-C-NI-M3X6	芳生镀白镍内六角沉头螺丝M3X6	普通碳钢	16	0.0004	
10	GB-T-819.1-2000-C-NI-M4X8	碳钢镀锌十字沉头螺丝M4X8	普通碳钢	8	0.001	
9	GB-T-973-1976-C-NI-M3X6	碳钢镀锌十字大扁头螺丝M3X6	普通碳钢	8	0.0006	
8	GB-T-973-1976-C-NI-M3X4	碳钢镀锌十字大扁头螺丝M3X4	普通碳钢	28	0.0005	
7	YG-C18A-0000-010	侧板连接件 2U	电解板	4	0.022	
6	盲孔压铆螺母镀白锌M3X5	压铆螺母柱 M3X5	普通碳钢	8	0.001	
5	YG-C18A-0000-012	面板下固定件	电解板	2	0.065	
4	YG-C18A-0000-007	拉手 2U	6063-T5	2	0.080	
3	YG-C18A-0000-003	盖板	5052-H32	2	0.760	
2	YG-C18A-0000-011	面板上固定件	电解板	2	0.059	
1	YG-C18A-0000-008	后防护条 2U	6063-T5	2	0.035	

- 技术要求:
- 1、必须按照设计、工艺要求及本规定和有关标准进行装配;
 - 2、所有零部件(包括外购、外协件)必须具有检验合格证方能进行装配;
 - 3、零件在装配前必须清理和清洗干净,不得有毛刺、飞边、氧化皮、锈蚀、切屑、砂粒、灰尘和油污等,并应符合相应清洁度要求;
 - 4、装配过程中零件不得磕碰、划伤和锈蚀;
 - 5、油漆未干的零件不得进行装配;
 - 6、相对运动的零件,装配时接触面间应加润滑油脂;
 - 7、各零、部件装配后相对位置应准确。

Break sharp edges (未注锐边倒角): Ch 0.05 to 0.25 x45°	Angular tolerances (未注角度公差): <6° ± 10' <30° ± 20' <120° ± 30' >120° ± 1°
Position tolerances (未注位置公差): ± 0.05	

Tolerances (未注公差): 0.5 to 6 ± 0.1 6 to 30 ± 0.2 30 to 120 ± 0.3 120 to 400 ± 0.4	Material (材料): (装配图)
Weight: (重量) (Kg): 5.114	Protection: (表面处理):
Part Name (零/部件名称):	Part Name (零/部件名称): C18A机箱
Drawn by (绘图): 莫永康	Date (日期): 2020.05.26
Check by (校对):	Date (日期):
Signature by (批准):	Date (日期):

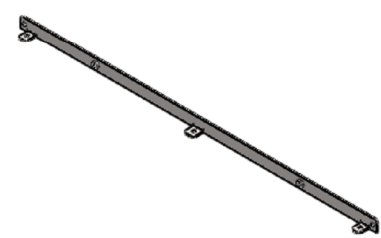
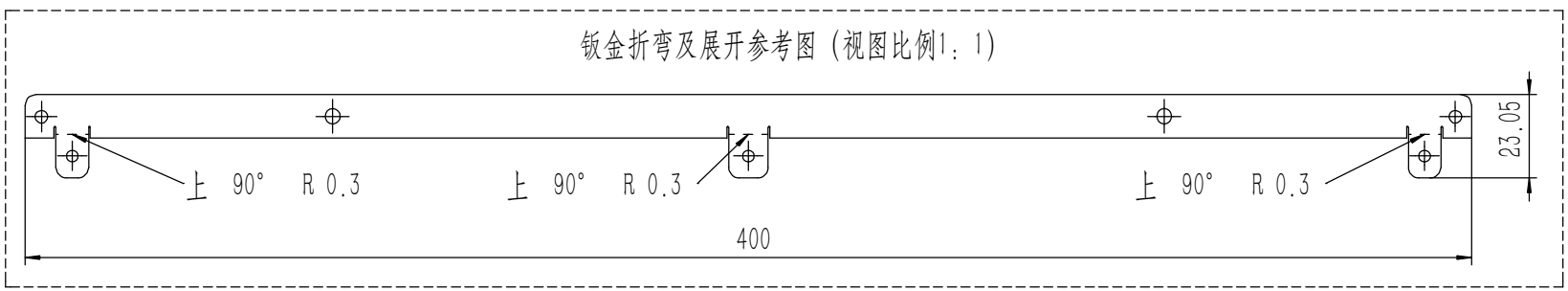
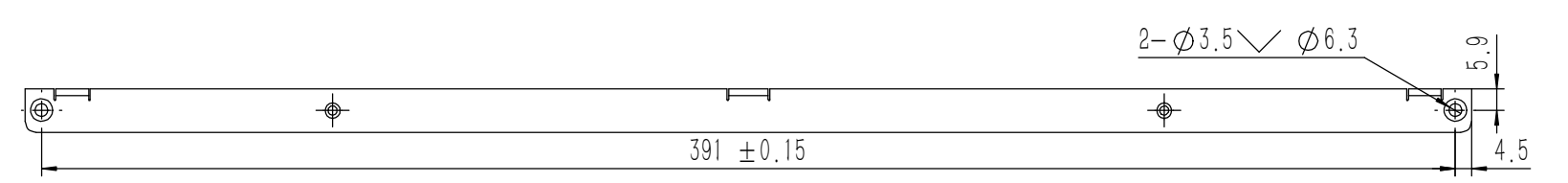
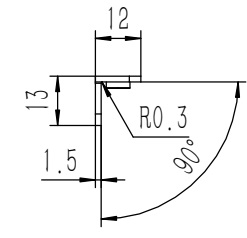
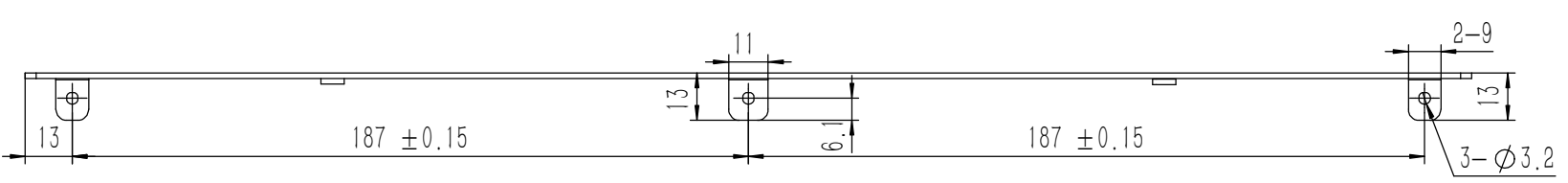
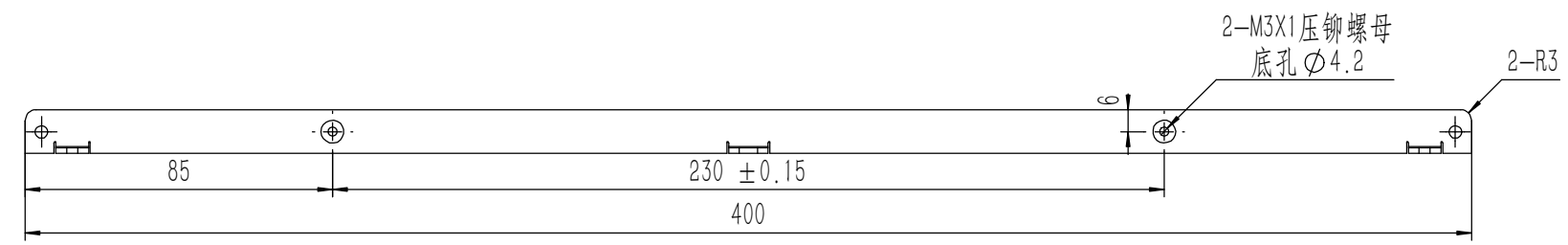
YONGU 永固	
Material (材料):	数量
Weight: (重量) (Kg): 5.114	单重
Protection: (表面处理):	备注
Part Name (零/部件名称):	图号
Part Name (零/部件名称): C18A机箱	图号: YG-C18A-0000-000
Drawn by (绘图): 莫永康	Date (日期): 2020.05.26
Check by (校对):	Date (日期):
Signature by (批准):	Date (日期):
Scale (比例): 1:1.5	Sheet (页数): 1 / 1
Revision (版本): A1	



技术要求:

- 1、零件加工表面不应有划痕、擦伤等损伤零件表面的缺陷;
- 2、去除毛刺飞边, 锐角倒钝;
- 3、未标注尺寸见3D数模。

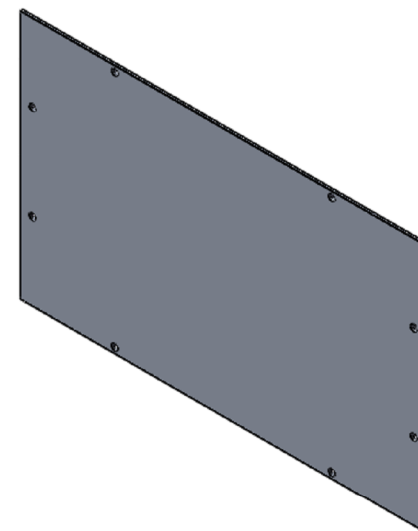
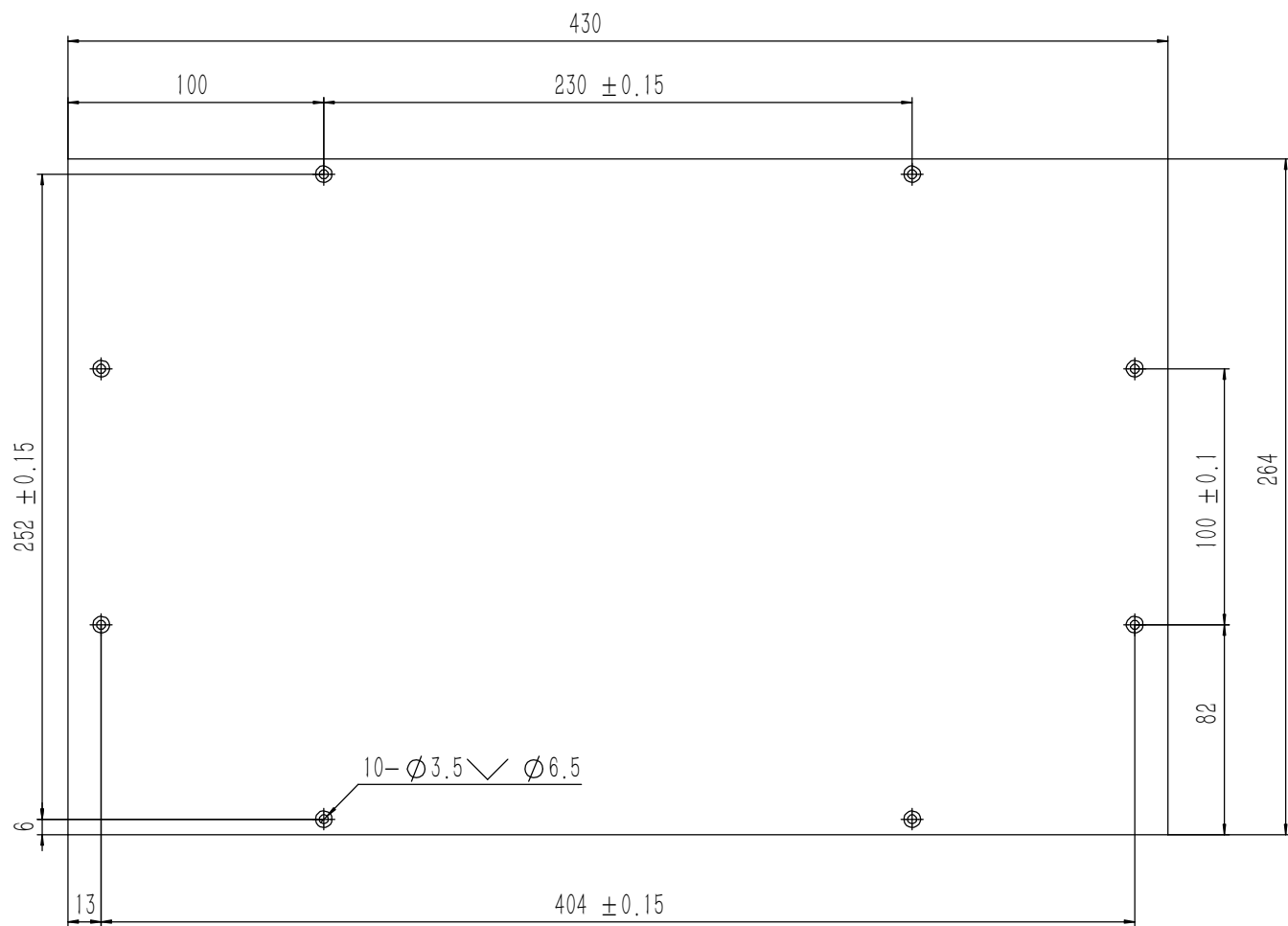
Tolerances (未注公差): 0.5 to 6 ± 0.1 6 to 30 ± 0.2 30 to 120 ± 0.3 120 to 400 ± 0.4	Material (材料): 6063-T5	YONGU 永固		
	Weight: (重量) (Kg) 0.035			
Break sharp edges (未注锐边倒角): Ch 0.05 to 0.25 x45°	Protection: (表面处理):	Part Name (零/部件名称): 后防护条 2U		
	Position tolerances (未注位置公差): ±0.05	Angular tolerances (未注角度公差): <6° ± 10' <30° ± 20' <120° ± 30' >120° ± 1°	Part Name (零/部件名称): 后防护条 2U	Drawing Number (图号): YG-C18A-0000-008
	Drawn by (绘图): 莫永康	Date (日期): 2020.05.26	Size: (图幅): A4	Sheet (页数): 1 / 1
	Check by (校对):	Date (日期):	Scale (比例): 1:1	
	Signature by (批准):	Date (日期):	Revision (版本): A1	



技术要求:
 1、零件加工表面不应有划痕、擦伤等损伤零件表面的缺陷;
 2、去除毛刺飞边,锐角倒钝;
 3、未标注尺寸见3D数模。

Tolerances (未注公差): 0.5 to 6 ± 0.1 6 to 30 ± 0.2 30 to 120 ± 0.3 120 to 400 ± 0.4	Material (材料):	电解板	
	Weight: (重量) (Kg):	0.059	
Break sharp edges (未注锐边倒角): Ch 0.05 to 0.25 x45°	Protection: (表面处理):		
	Position tolerances (未注位置公差): ±0.05	Part Name (零/部件名称):	面板上固定件
Angular tolerances (未注角度公差): <6° ± 10' <30° ± 20' <120° ± 30' >120° ± 1°	Drawn by (绘图):	莫永康	Date (日期): 2020.05.26
		Check by (校对):	Date (日期):
	Signature by (批准):	Date (日期):	Revision (版本): A1
		Drawing Number (图号): YG-C18A-0000-011	
		Size (图幅): A2	Sheet (页数): 1 / 1





技术要求:

- 1、零件加工表面不应有划痕、擦伤等损伤零件表面的缺陷;
- 2、去除毛刺飞边, 锐角倒钝;
- 3、未标注尺寸见3D数模。

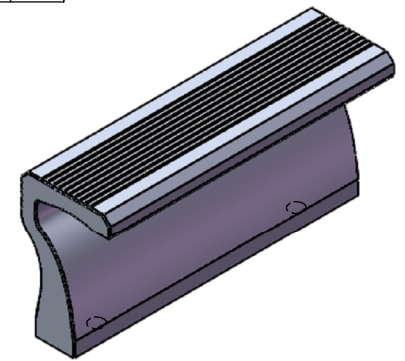
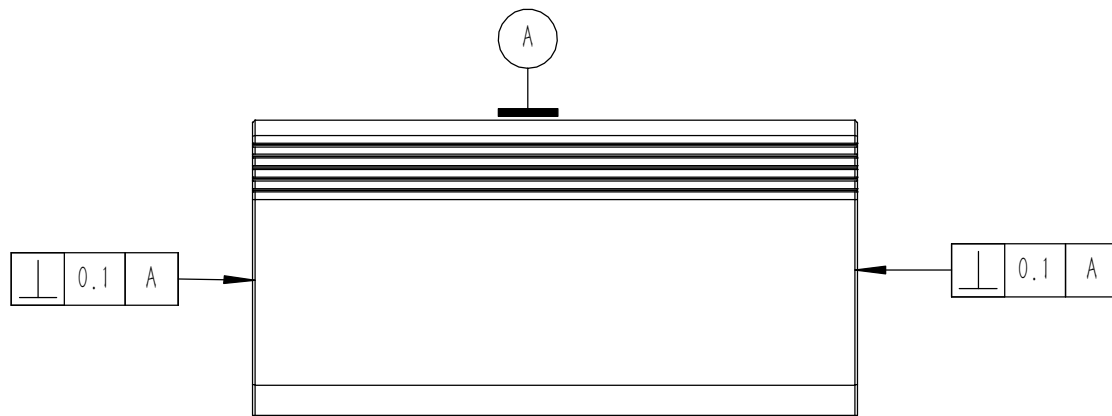
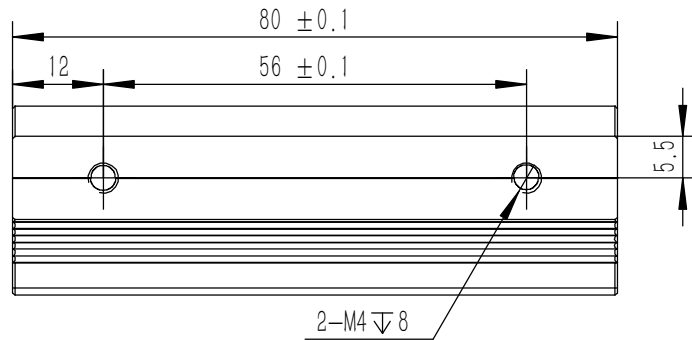
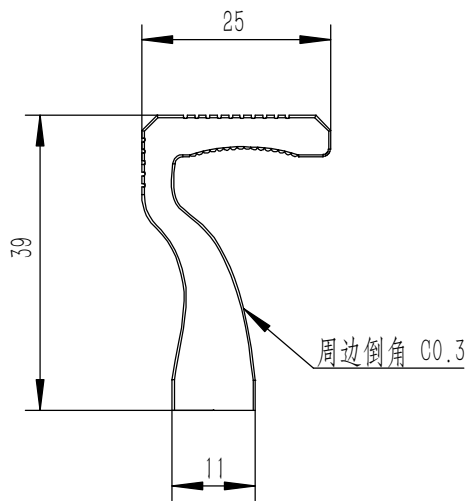
Tolerances (未注公差):	
0.5 to 6	± 0.1
6 to 30	± 0.2
30 to 120	± 0.3
120 to 400	± 0.4

Material (材料):	5052-H32
Weight: (重量) (Kg):	0.760
Protection: (表面处理):	



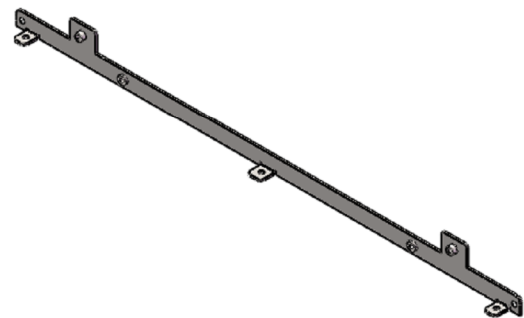
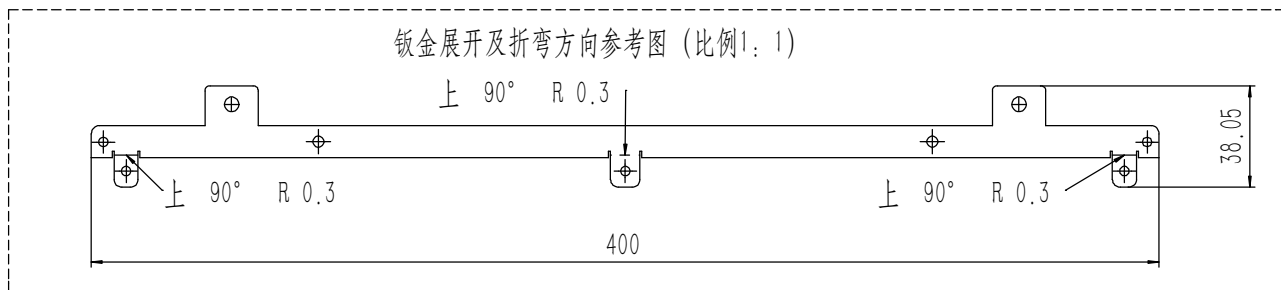
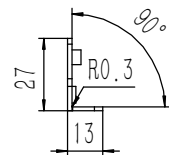
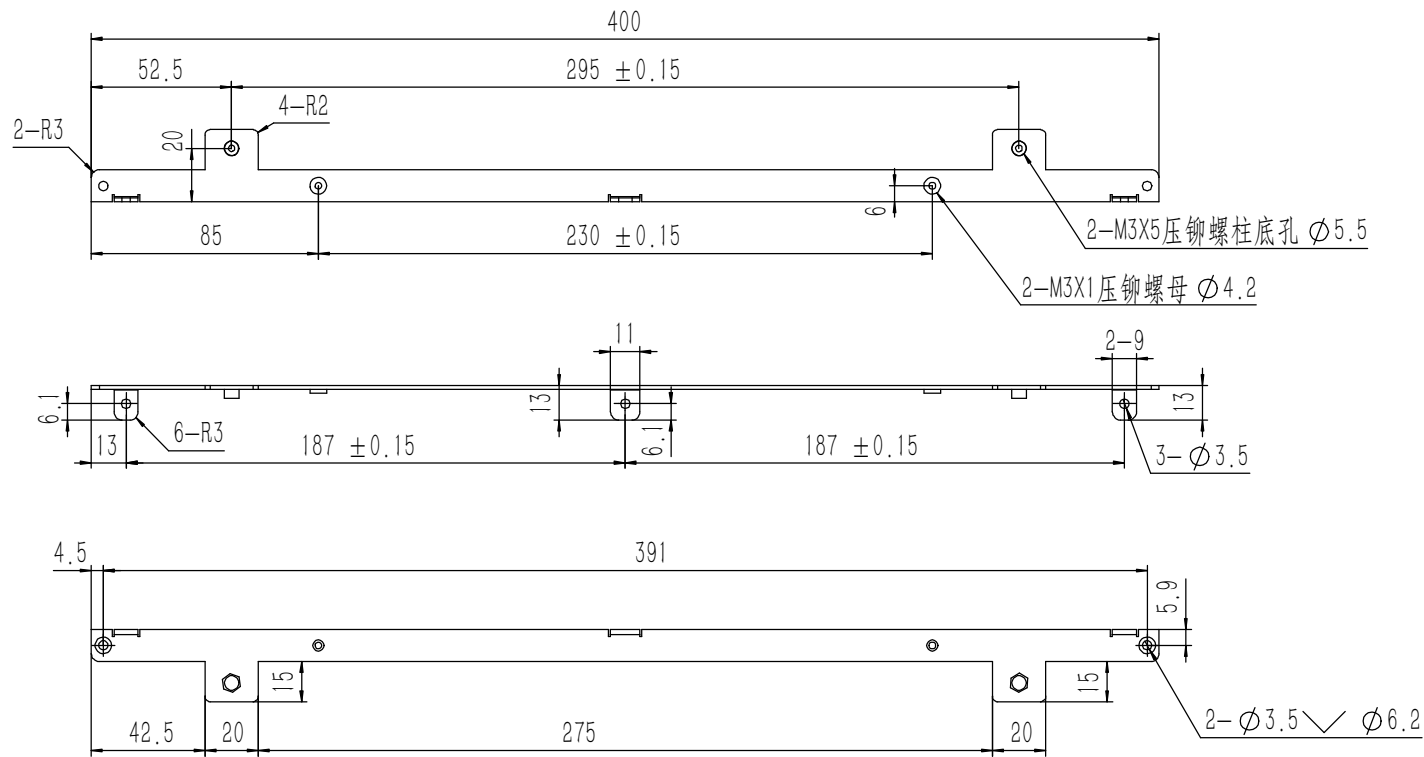
Break sharp edges (未注锐边倒角): Ch 0.05 to 0.25 x45°	Angular tolerances (未注角度公差):
	<6° ± 10'
	<30° ± 20'
	<120° ± 30'
	>120° ± 1°
Position tolerances (未注位置公差): ± 0.05	

Part Name (零/部件名称):		Drawing Number (图号):	
盖板		YG-C18A-0000-003	
Drawn by (绘图): 莫永康	Date (日期): 2020.05.26	Size: (图幅): A1	 Sheet (页数): 1 / 1
Check by (校对):	Date (日期):	Scale (比例): 1:1	
Signature by (批准):	Date (日期):	Revision (版本): A1	



- 技术要求:
- 1、零件加工表面不应有划痕、擦伤等损伤零件表面的缺陷;
 - 2、去除毛刺飞边, 锐角倒钝;
 - 3、未标注尺寸见3D数模。

Tolerances (未注公差): 0.5 to 6 ± 0.1 6 to 30 ± 0.2 30 to 120 ± 0.3 120 to 400 ± 0.4	Material (材料):	6063-T5		YONGU 永固
	Weight: (重量) (Kg)	0.080		
Break sharp edges (未注锐边倒角): Ch 0.05 to 0.25 x45°	Protection: (表面处理):			Drawing Number (图号): YG-C18A-0000-007
	Position tolerances (未注位置公差): ± 0.05	Part Name (零/部件名称):	拉手 2U	
Angular tolerances (未注角度公差): <6° ± 10' <30° ± 20' <120° ± 30' >120° ± 1°	Drawn by (绘图):	莫永康	Date (日期):	2020.05.26
	Check by (校对):		Date (日期):	
	Signature by (批准):		Date (日期):	
		Scale (比例):	1:1	
		Revision (版本):	A1	
		Sheet (页数):	1 / 1	



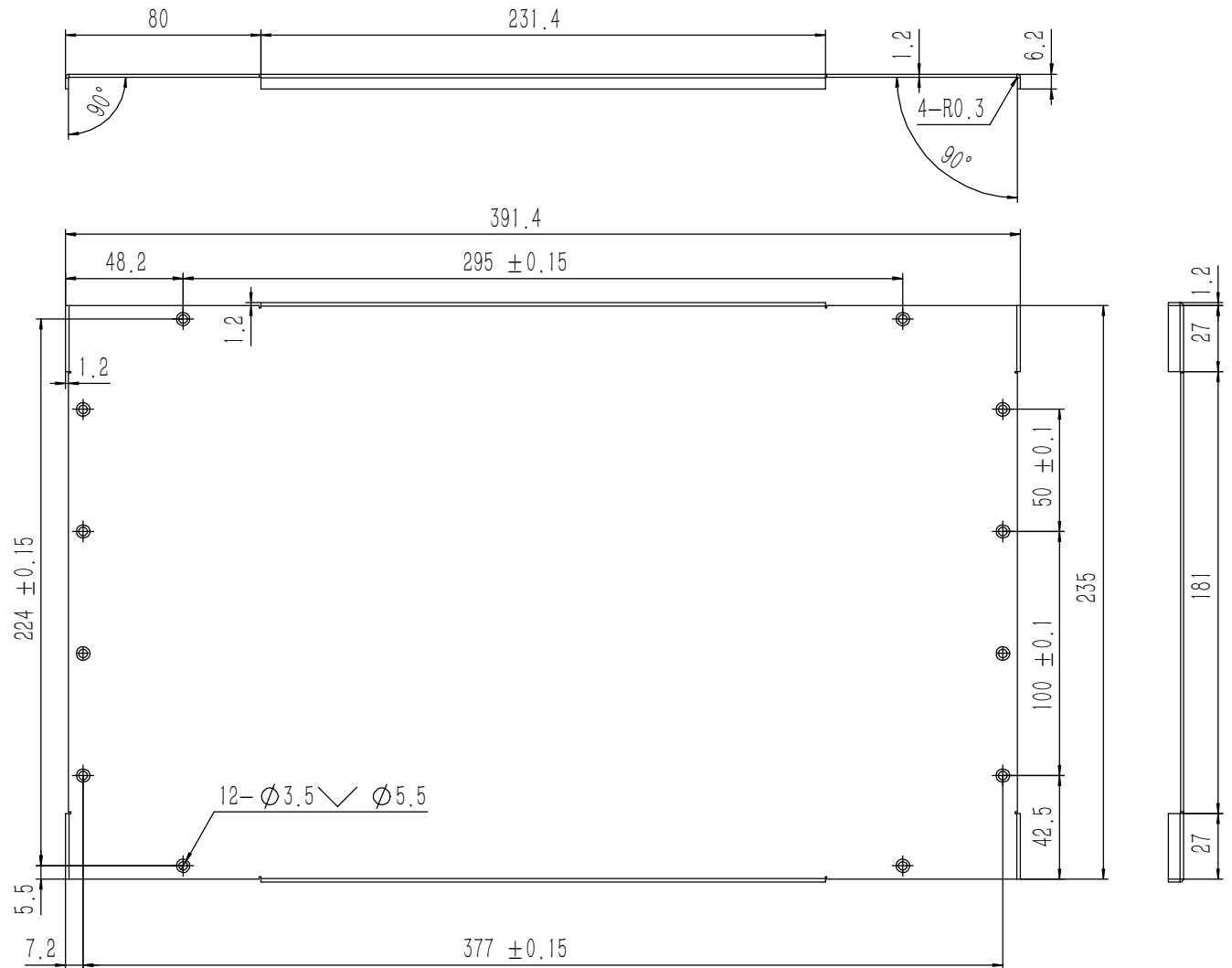
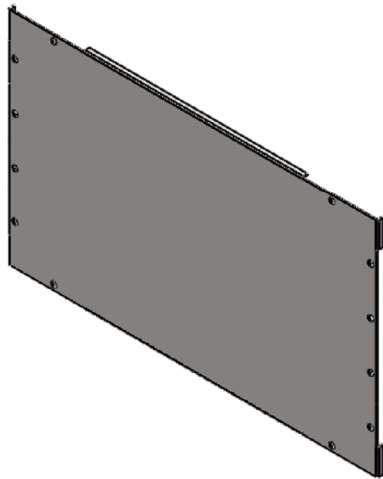
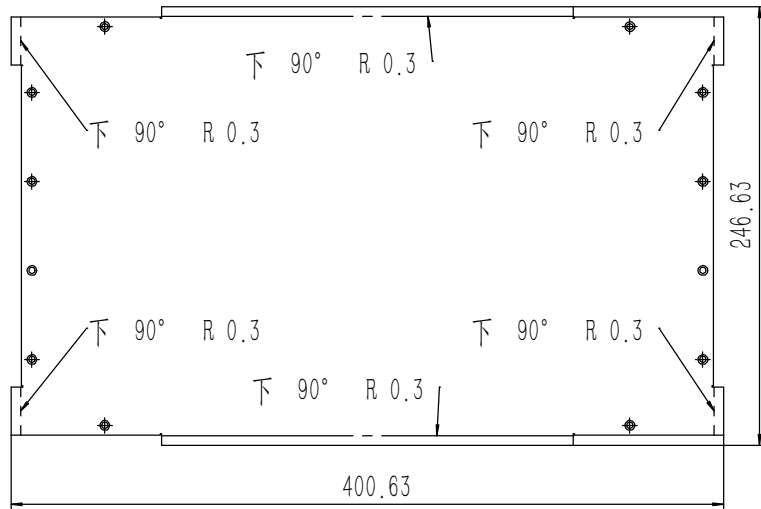
技术要求:

- 1、零件加工表面不应有划痕、擦伤等损伤零件表面的缺陷;
- 2、去除毛刺飞边, 锐角倒钝;
- 3、未标注尺寸见3D数模。

Tolerances (未注公差): 0.5 to 6 ± 0.1 6 to 30 ± 0.2 30 to 120 ± 0.3 120 to 400 ± 0.4	Material (材料): 电解板	Weight: (重量) (Kg): 0.067	Protection: (表面处理):	Part Name (零/部件名称): 面板下固定件		Drawing Number (图号): YG-C18A-0000-012	
				Break sharp edges (未注锐边倒角): Ch 0.05 to 0.25 x45°		Angular tolerances (未注角度公差): <6° ± 10' <30° ± 20' <120° ± 30' >120° ± 1°	
Drawn by (绘图): 莫永康		Date (日期): 2020.05.26		Size: (图幅): A1		Sheet (页数): 1 / 1	
Check by (校对):		Date (日期):		Scale (比例): 1:1		Revision (版本): A1	
Signature by (批准):		Date (日期):					

YONGU 永固

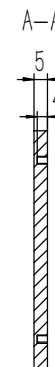
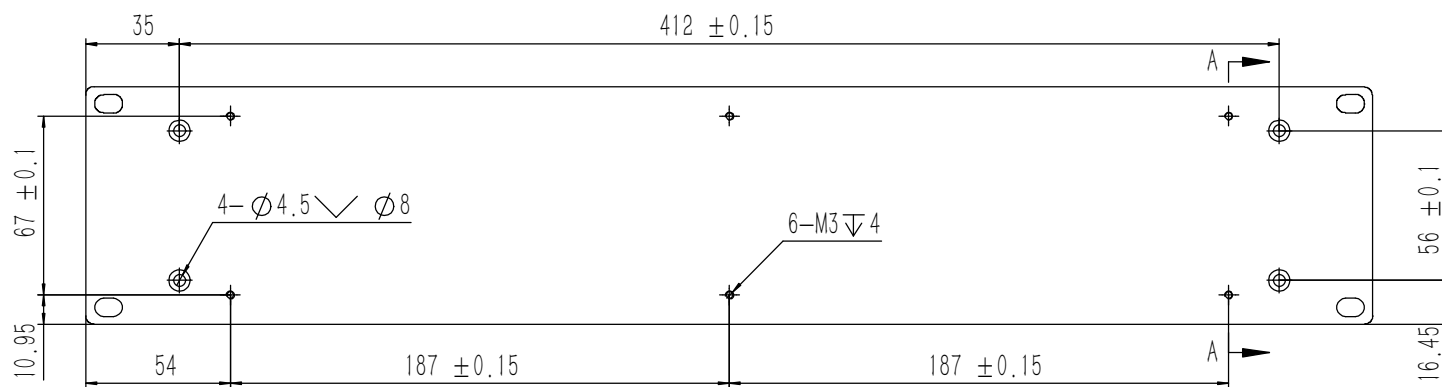
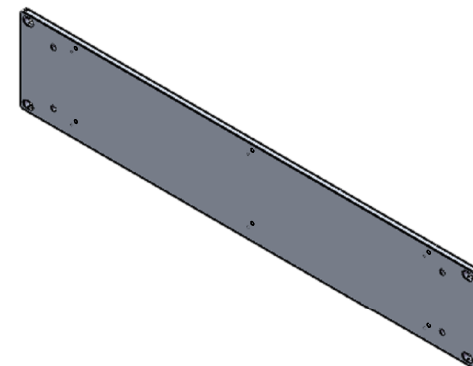
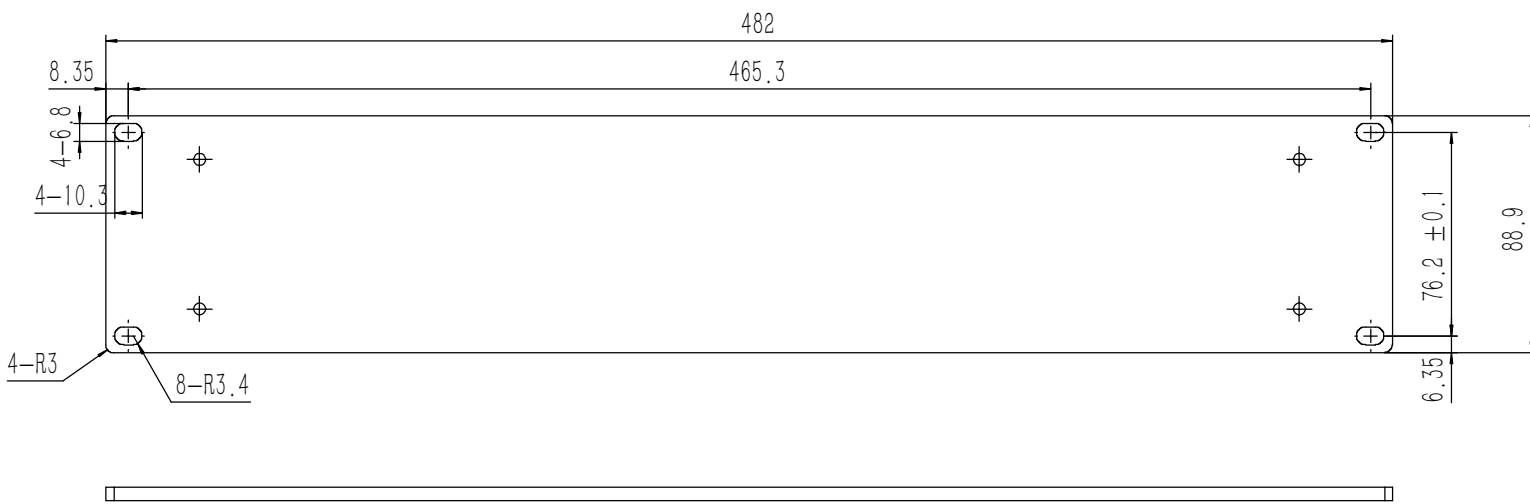
钣金展开及折弯方向参考图 (比例1:1.5)



技术要求:

- 1、零件加工表面不应有划痕、擦伤等损伤零件表面的缺陷;
- 2、去除毛刺飞边,锐角倒钝;
- 3、未标注尺寸见3D数模。

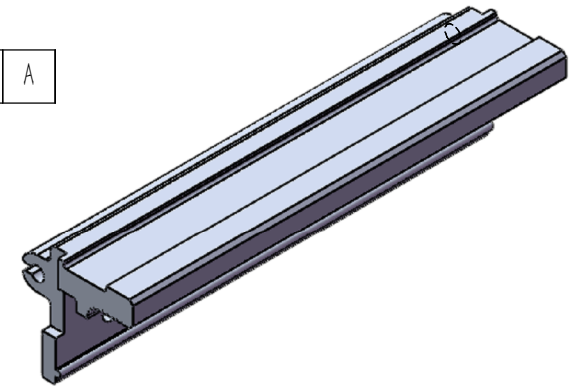
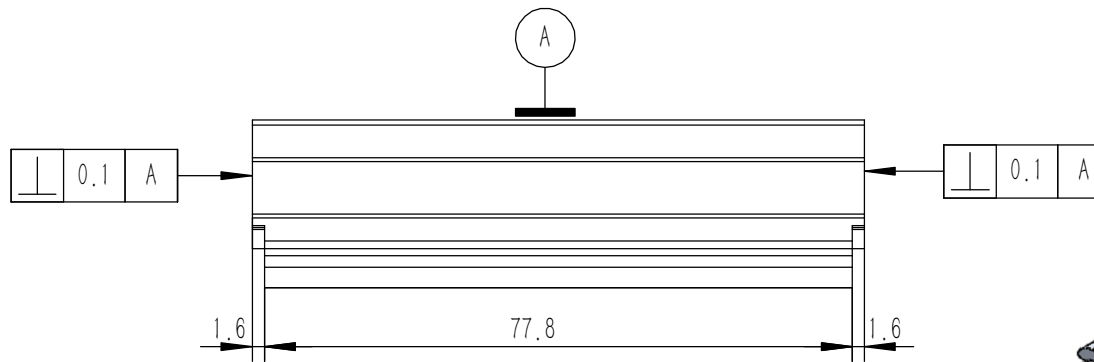
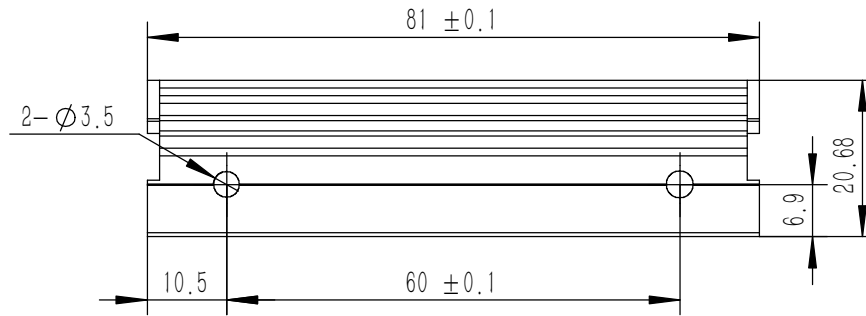
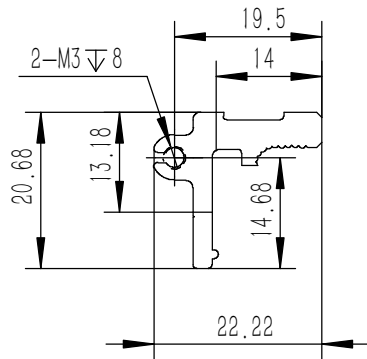
Tolerances (未注公差): 0.5 to 6 ± 0.1 6 to 30 ± 0.2 30 to 120 ± 0.3 120 to 400 ± 0.4	Material (材料):	电解板	YONGU 永固		
	Weight: (重量) (Kg):	0.885			
Break sharp edges (未注锐边倒角): Ch 0.05 to 0.25 x45°	Protection: (表面处理):		Drawing Number (图号): YG-C18A-0000-004		
	Position tolerances (未注位置公差): ± 0.05	Part Name (零/部件名称):		垫板	
Angular tolerances (未注角度公差): <6° ± 10' <30° ± 20' <120° ± 30' >120° ± 1°	Drawn by (绘图):	莫永康	Date (日期): 2020.05.26	Size: (图幅): A1	Sheet (页数): 1 / 1
	Signature by (批准):		Date (日期):	Scale (比例): 1:1	
			Date (日期):	Revision (版本): A1	



技术要求:

- 1、零件加工表面不应有划痕、擦伤等损伤零件表面的缺陷;
- 2、去除毛刺飞边, 锐角倒钝;
- 3、未标注尺寸见3D数模。

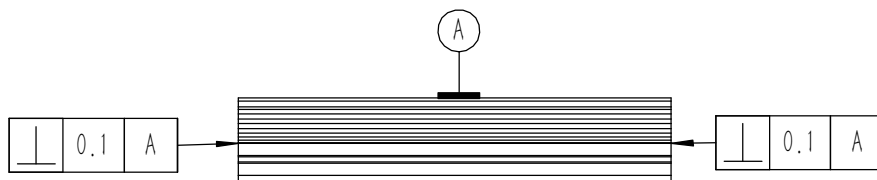
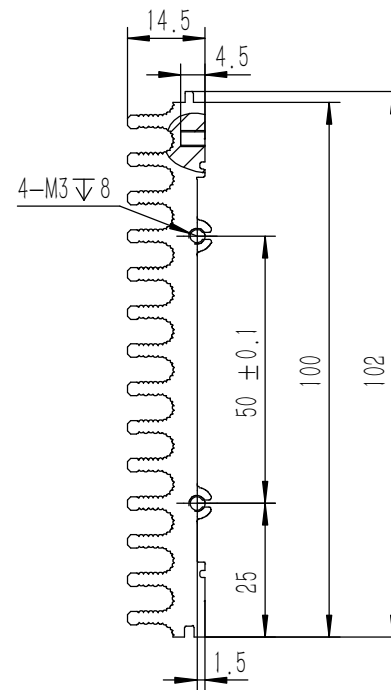
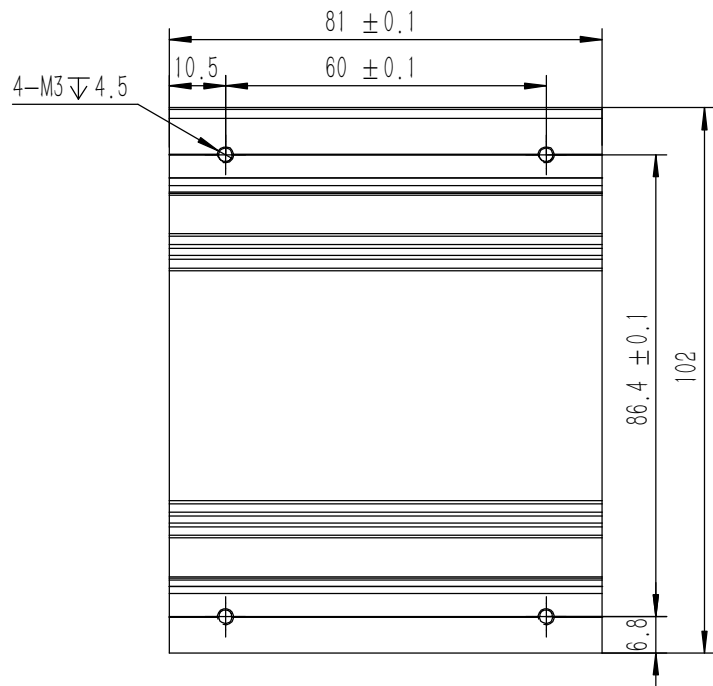
Tolerances (未注公差): 0.5 to 6 ± 0.1 6 to 30 ± 0.2 30 to 120 ± 0.3 120 to 400 ± 0.4	Material (材料): 5052-H32	YONGU 永固
	Weight: (重量) (Kg): 0.569	
Break sharp edges (未注锐边倒角): Ch 0.05 to 0.25 x45°	Protection: (表面处理):	Part Name (零/部件名称): 前面板
Angular tolerances (未注角度公差): <6° ± 10' <30° ± 20' <120° ± 30' >120° ± 1°	Part Name (零/部件名称): 前面板	
Position tolerances (未注位置公差): ± 0.05	Drawn by (绘图): 莫永康	Date (日期): 2020.05.26
	Check by (校对):	Date (日期):
	Signature by (批准):	Date (日期):
	Scale (比例): 1:1	Sheet (页数): 1 / 1
	Revision (版本): A1	



技术要求:

- 1、零件加工表面不应有划痕、擦伤等损伤零件表面的缺陷;
- 2、去除毛刺飞边, 锐角倒钝;
- 3、未标注尺寸见3D数模。

Tolerances (未注公差): 0.5 to 6 ± 0.1 6 to 30 ± 0.2 30 to 120 ± 0.3 120 to 400 ± 0.4	Material (材料): 6063-T5	YONGU 永固	
	Weight: (重量) (Kg) 0.030		
Break sharp edges (未注锐边倒角): Ch 0.05 to 0.25 x45°	Protection: (表面处理):	Part Name (零/部件名称): 侧板固定件 2U	
	Position tolerances (未注位置公差): ±0.05	Angular tolerances (未注角度公差): <6° ± 10' <30° ± 20' <120° ± 30' >120° ± 1°	Part Name (零/部件名称): 侧板固定件 2U
	Material (材料): 6063-T5	Drawing Number (图号): YG-C18A-0000-009	
	Weight: (重量) (Kg) 0.030	Scale (比例): 1:1	Sheet (页数): 1 / 1
	Protection: (表面处理):	Revision (版本): A1	
	Part Name (零/部件名称): 侧板固定件 2U	Signature by (批准):	
	Part Name (零/部件名称): 侧板固定件 2U	Date (日期): 2020.05.26	
	Part Name (零/部件名称): 侧板固定件 2U	Date (日期):	
	Part Name (零/部件名称): 侧板固定件 2U	Date (日期):	

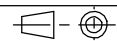


技术要求:

- 1、零件加工表面不应有划痕、擦伤等损伤零件表面的缺陷;
- 2、去除毛刺飞边,锐角倒钝;
- 3、未标注尺寸见3D数模。

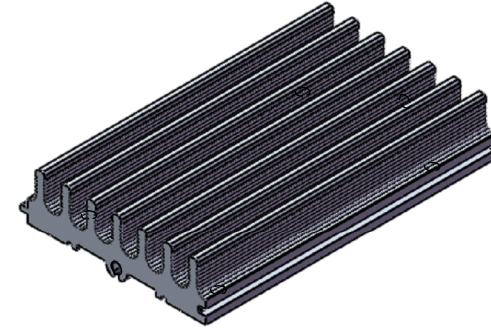
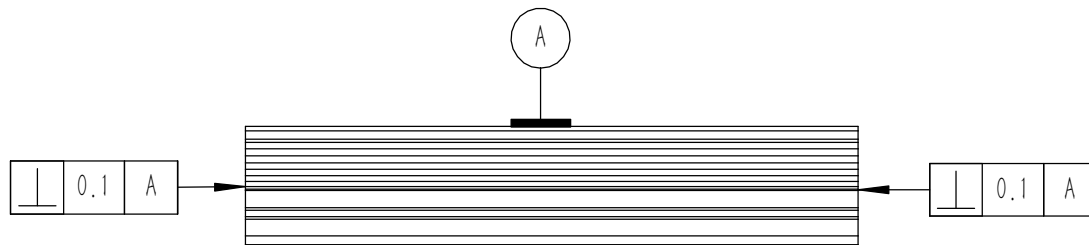
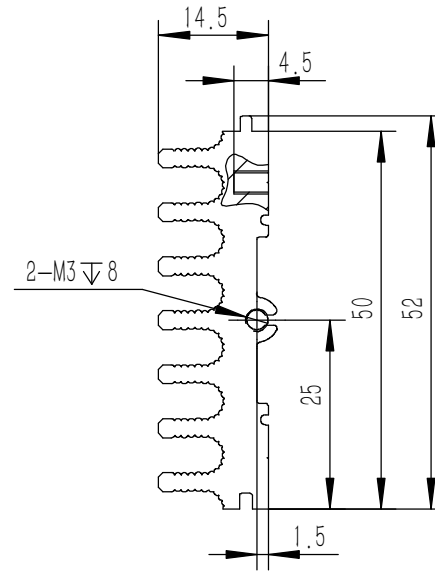
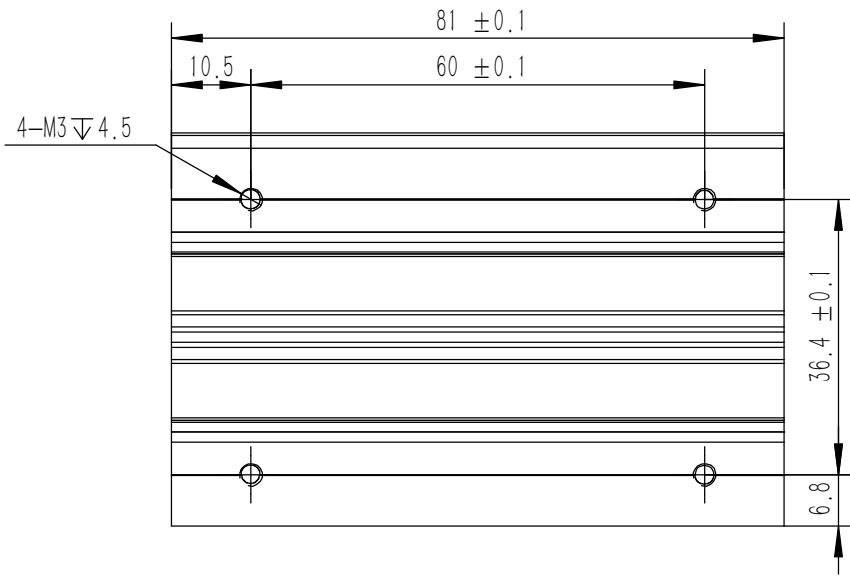
Tolerances (未注公差): 0.5 to 6 ± 0.1 6 to 30 ± 0.2 30 to 120 ± 0.3 120 to 400 ± 0.4	Material (材料):	6063-T5	
	Weight: (重量) (Kg)	0.177	
Break sharp edges (未注锐边倒角): Ch 0.05 to 0.25 x45°	Protection: (表面处理):		
	Position tolerances (未注位置公差): ±0.05	Part Name (零/部件名称):	Drawing Number (图号):
Angular tolerances (未注角度公差): <6° ± 10' <30° ± 20' <120° ± 30' >120° ± 1°	组合侧板 2U-100		YG-C18A-0000-005
	Drawn by (绘图): 莫永康	Date (日期): 2020.05.26	Size (图幅): A3
	Check by (校对):	Date (日期):	Scale (比例): 1:1
	Signature by (批准):	Date (日期):	Revision (版本): A1

YONGU 永固



Sheet (页数):

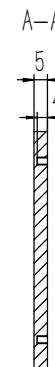
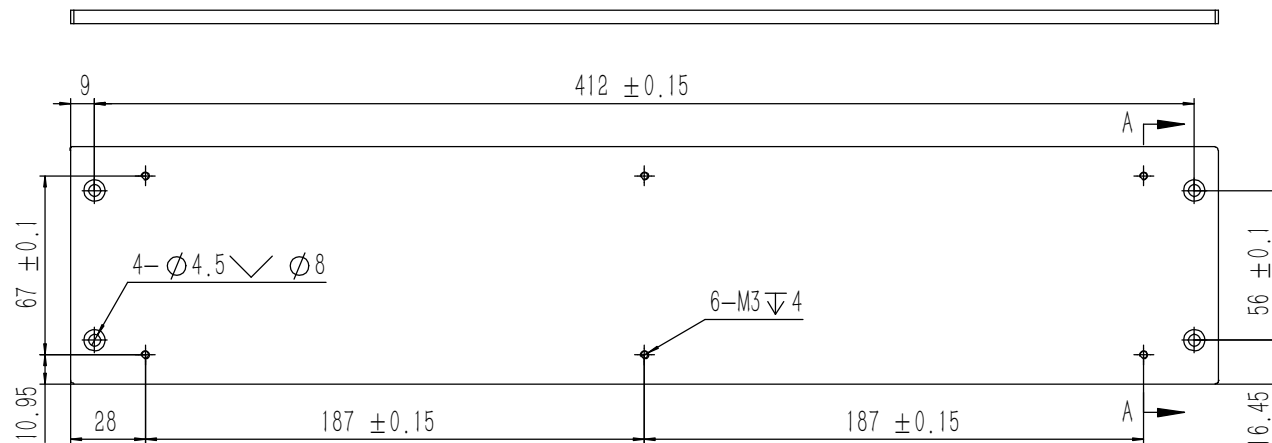
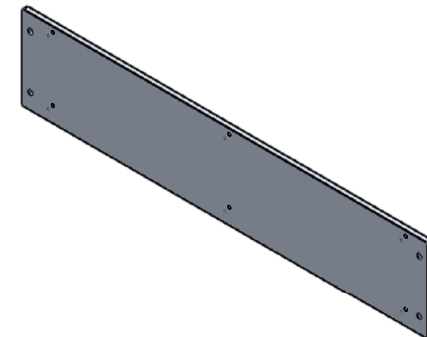
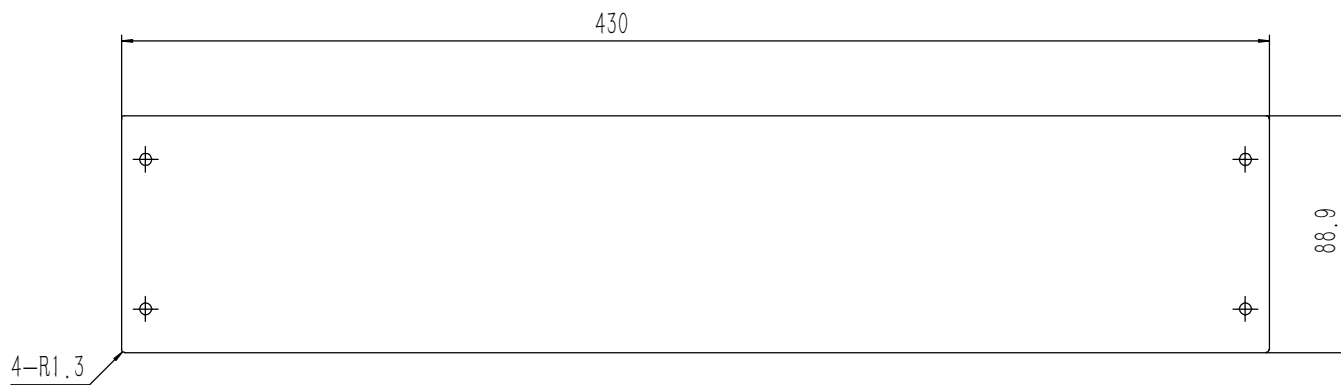
1 / 1



技术要求:

- 1、零件加工表面不应有划痕、擦伤等损伤零件表面的缺陷;
- 2、去除毛刺飞边,锐角倒钝;
- 3、未标注尺寸见3D数模。

Tolerances (未注公差): 0.5 to 6 ± 0.1 6 to 30 ± 0.2 30 to 120 ± 0.3 120 to 400 ± 0.4	Material (材料): 6063-T5	YONGU 永固	
	Weight: (重量) (Kg) 0.093		
Break sharp edges (未注锐边倒角): Ch 0.05 to 0.25 x45°	Protection: (表面处理):	Part Name (零/部件名称): 组合侧板 2U-50	
	Position tolerances (未注位置公差): ±0.05	Angular tolerances (未注角度公差): <6° ± 10' <30° ± 20' <120° ± 30' >120° ± 1°	Drawing Number (图号): YG-C18A-0000-006
	Drawn by (绘图): 莫永康	Date (日期): 2020.05.26	Size: (图幅): A4
	Check by (校对):	Date (日期):	Scale (比例): 1:1
	Signature by (批准):	Date (日期):	Revision (版本): A1
			Sheet (页数): 1 / 1



技术要求:
 1、零件加工表面不应有划痕、擦伤等损伤零件表面的缺陷;
 2、去除毛刺飞边, 锐角倒钝;
 3、未标注尺寸见3D数模。

Tolerances (未注公差): 0.5 to 6 ± 0.1 6 to 30 ± 0.2 30 to 120 ± 0.3 120 to 400 ± 0.4	Material (材料):	5052-H32	
	Weight: (重量) (Kg):	0.511	
Break sharp edges (未注锐边倒角): Ch 0.05 to 0.25 x45°	Protection: (表面处理):		
	Position tolerances (未注位置公差): ± 0.05	Part Name (零/部件名称):	
Angular tolerances (未注角度公差): <6° ± 10' <30° ± 20' <120° ± 30' >120° ± 1°	后面板		Drawing Number (图号):
	Drawn by (绘图): 莫永康	Date (日期): 2020.05.26	YG-C18A-0000-002
	Check by (校对):	Date (日期):	Size: (图幅): A1
	Signature by (批准):	Date (日期):	Scale (比例): 1:1
		Revision (版本): A1	Sheet (页数): 1 / 1

