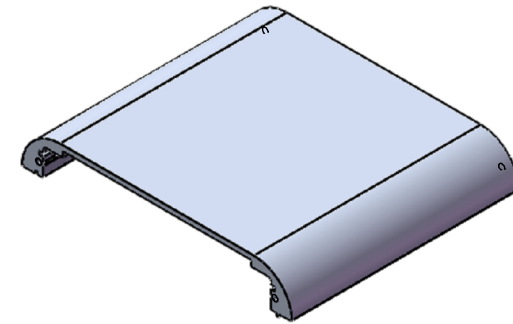
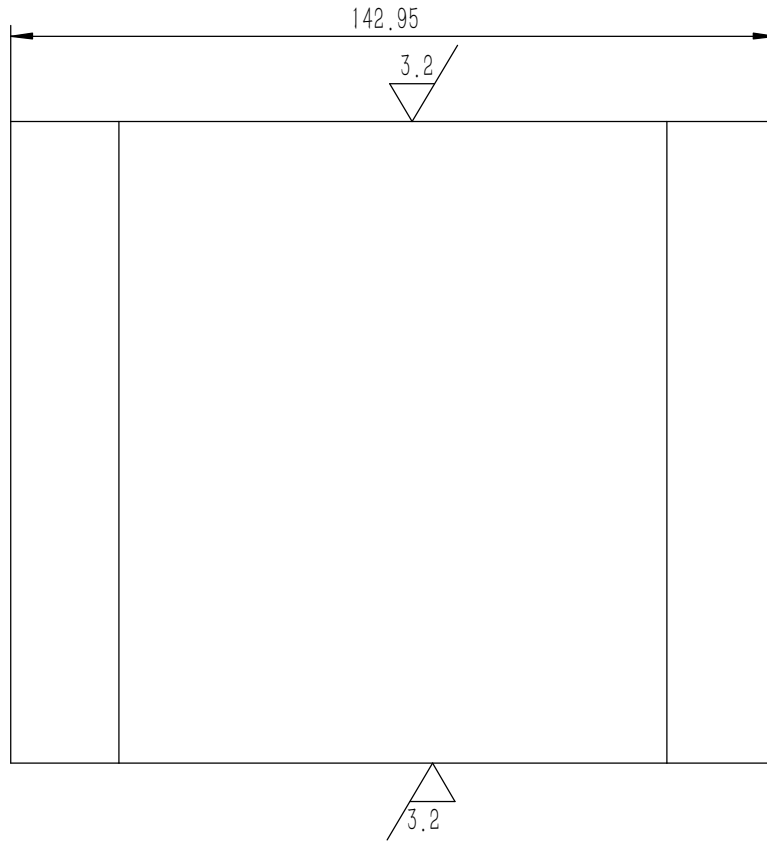
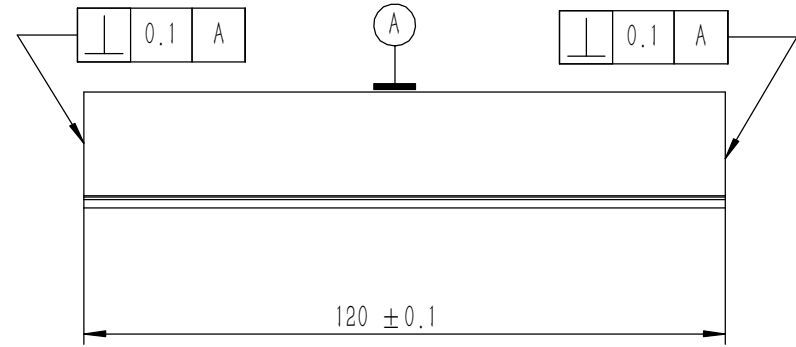
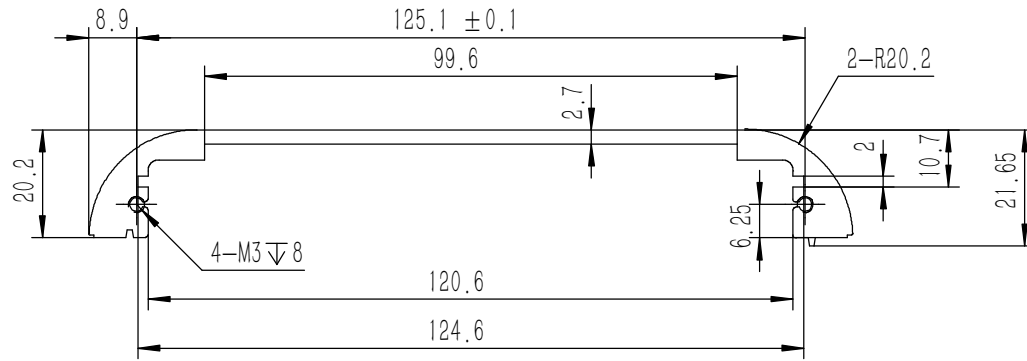


技术要求:

- 1、必须按照设计、工艺要求及本规定和有关标准进行装配;
- 2、所有零部件(包括外购、外协件)必须具有检验合格证方能进行装配;
- 3、零件在装配前必须清理和清洗干净,不得有毛刺、飞边、氧化皮、锈蚀、切屑、砂粒、灰尘和油污等,并应符合相应清洁度要求;
- 4、装配过程中零件不得磕碰、划伤和锈蚀;
- 5、油漆未干的零件不得进行装配;
- 6、相对运动的零件,装配时接触面间应加润滑油脂;
- 7、各零、部件装配后相对位置应准确。

7	GB-T-819.1-2000-C-BE-M3X8	碳钢发黑十字沉头螺丝 M3X8	普通碳钢	8	0.0005	
6	GB-T-819.1-2000-C-BE-M3X6	碳钢发黑十字沉头螺丝 M3X6	普通碳钢	2	0.0004	
5	YG-W29C-0000-005	机脚	5052-H32	4	0.009	
4	YG-W29C-0000-004	后面板	5052-H32	1	0.029	
3	YG-W29C-0000-003	前面板	6063-T5	1	0.078	
2	YG-W29C-0000-002	下壳	6063-T5	1	0.209	
1	YG-W29C-0000-001	上壳	6063-T5	1	0.209	
序号	图号	名称	材料	数量	单重	备注

Tolerances (未注公差): 0.5 to 6 ± 0.1 6 to 30 ± 0.2 30 to 120 ± 0.3 120 to 400 ± 0.4	Material (材料): (装配图)	YONGU 永固	Drawing Number (图号): YG-W29C-0000-000
	Weight: (重量) (Kg): 0.566		
Break sharp edges (未注锐边倒角): Ch 0.05 to 0.25 x45°	Angular tolerances (未注角度公差): <6° ± 10' <30° ± 20' <120° ± 30' >120° ± 1°	Part Name (零/部件名称): W29C功放	Size: (图幅): A2
Position tolerances (未注位置公差): ±0.05	Drawn by (绘图): 莫永康 Date (日期): 2020.05.15	Check by (校对): Date (日期):	Scale (比例): 1:1 Sheet (页数): 1 / 1
	Signature by (批准): Date (日期):	Revision (版本): A1	



技术要求:

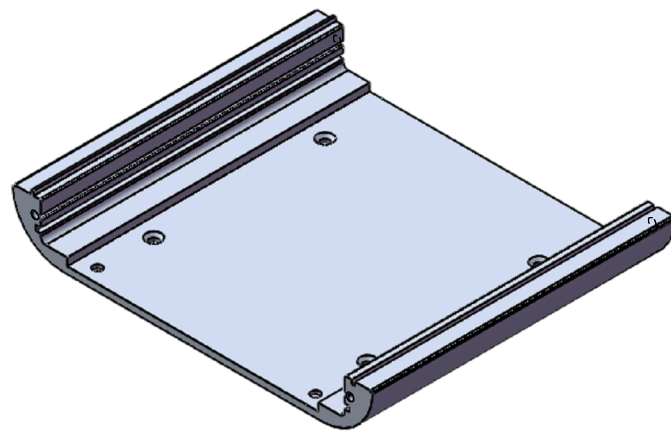
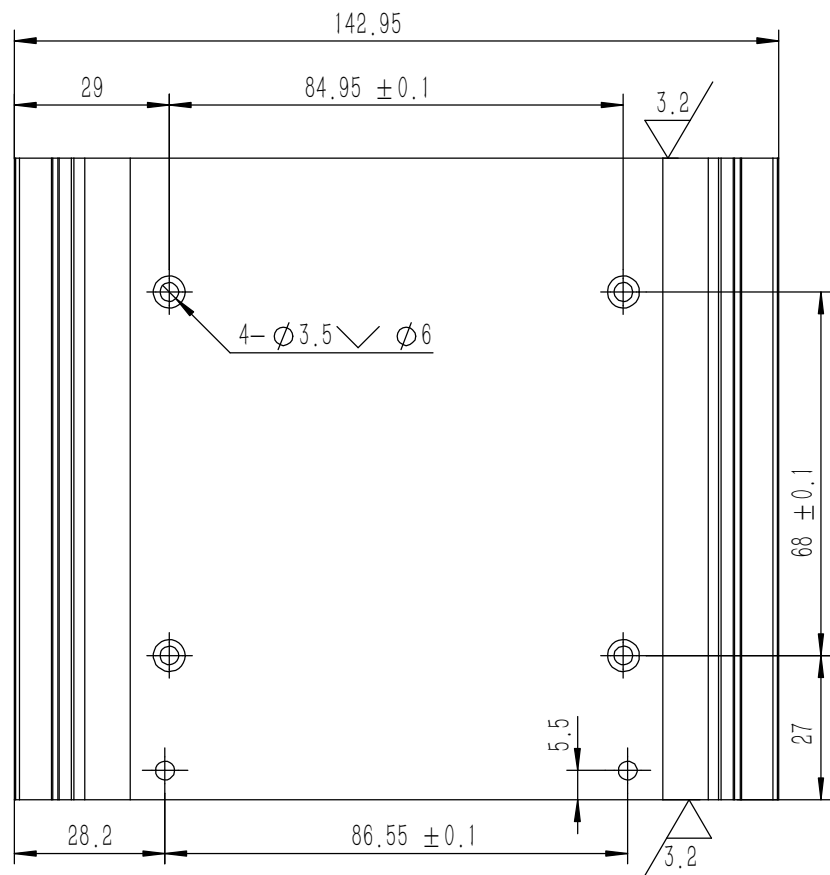
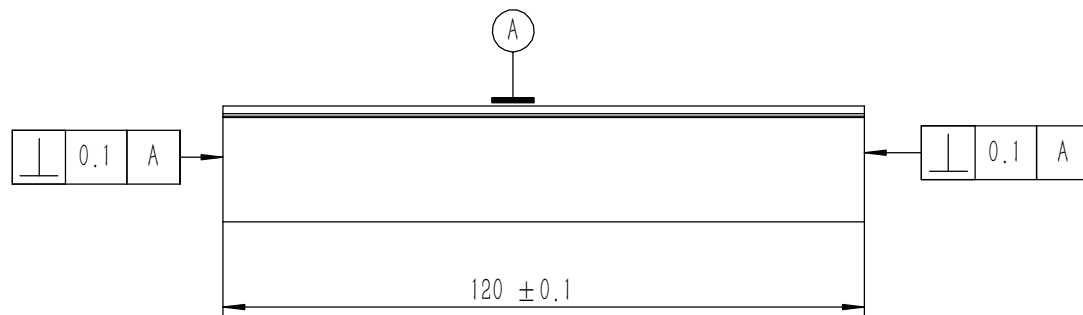
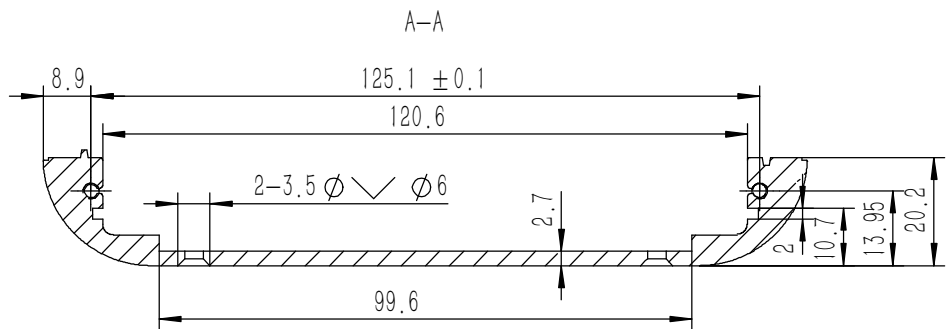
- 1、零件加工表面不应有划痕、擦伤等损伤零件表面的缺陷;
- 2、去除毛刺飞边, 锐角倒钝;
- 3、未标注尺寸见3D数模。

Break sharp edges (未注锐边倒角): Ch 0.05 to 0.25 x45°	Angular tolerances (未注角度公差): <6° ± 10' <30° ± 20' <120° ± 30' >120° ± 1°
Position tolerances (未注位置公差): ±0.05	

Tolerances (未注公差):	Material (材料):	6063-T5
0.5 to 6 ± 0.1	Weight: (重量) (Kg)	0.209
6 to 30 ± 0.2	Protection: (表面处理):	
30 to 120 ± 0.3	Part Name (零/部件名称):	
120 to 400 ± 0.4		



上壳		Drawing Number (图号):	YG-W29C-0000-001
Drawn by (绘图): 莫永康	Date (日期): 2020.05.15	Size (图幅): A3	Sheet (页数): 1 / 1
Check by (校对):	Date (日期):	Scale (比例): 1:1	
Signature by (批准):	Date (日期):	Revision (版本): A1	



技术要求:

- 1、零件加工表面不应有划痕、擦伤等损伤零件表面的缺陷;
- 2、去除毛刺飞边, 锐角倒钝;
- 3、未标注尺寸见3D数模。

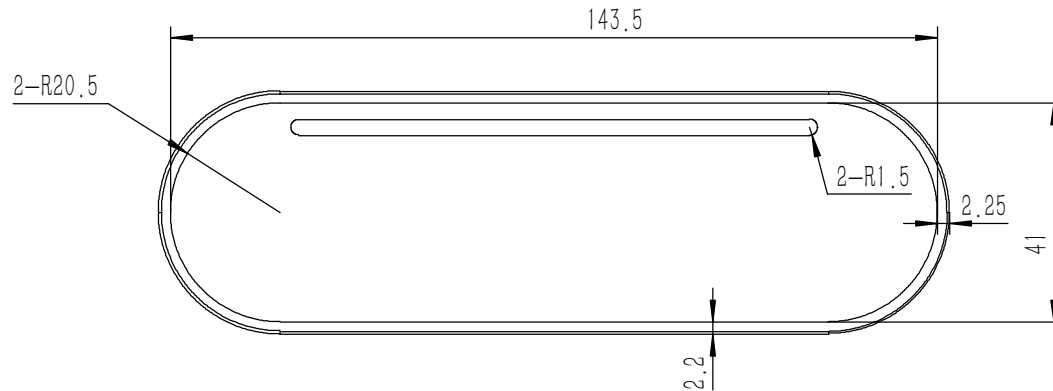
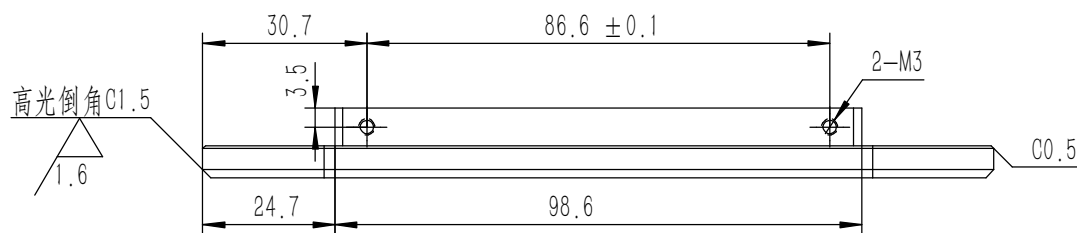
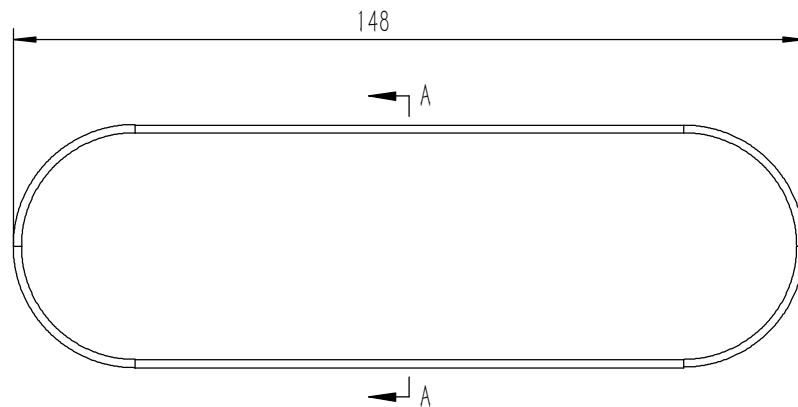
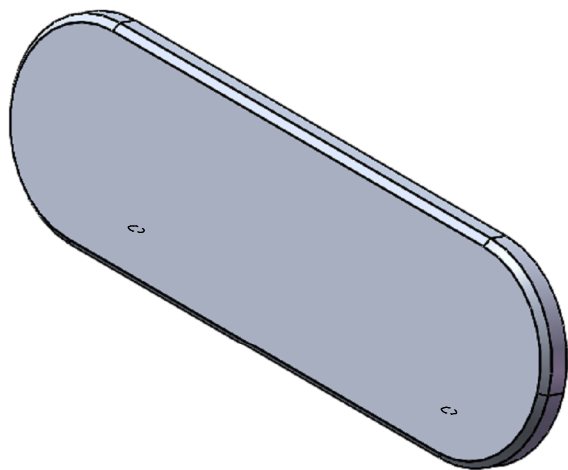
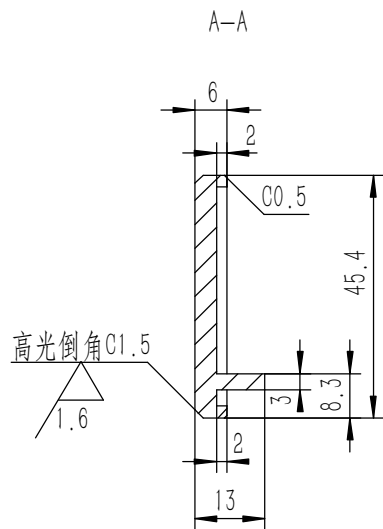
Break sharp edges (未注锐边倒角): Ch 0.05 to 0.25 x45°	Angular tolerances (未注角度公差): <6° ± 10' <30° ± 20' <120° ± 30' >120° ± 1°
Position tolerances (未注位置公差): ±0.05	

Tolerances (未注公差):	
0.5 to 6	± 0.1
6 to 30	± 0.2
30 to 120	± 0.3
120 to 400	± 0.4

Material (材料):	6063-T5
Weight: (重量) (Kg)	0.209
Protection: (表面处理):	
Part Name (零/部件名称):	下壳



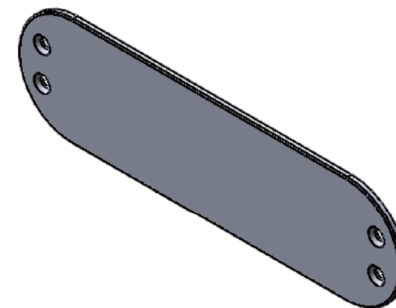
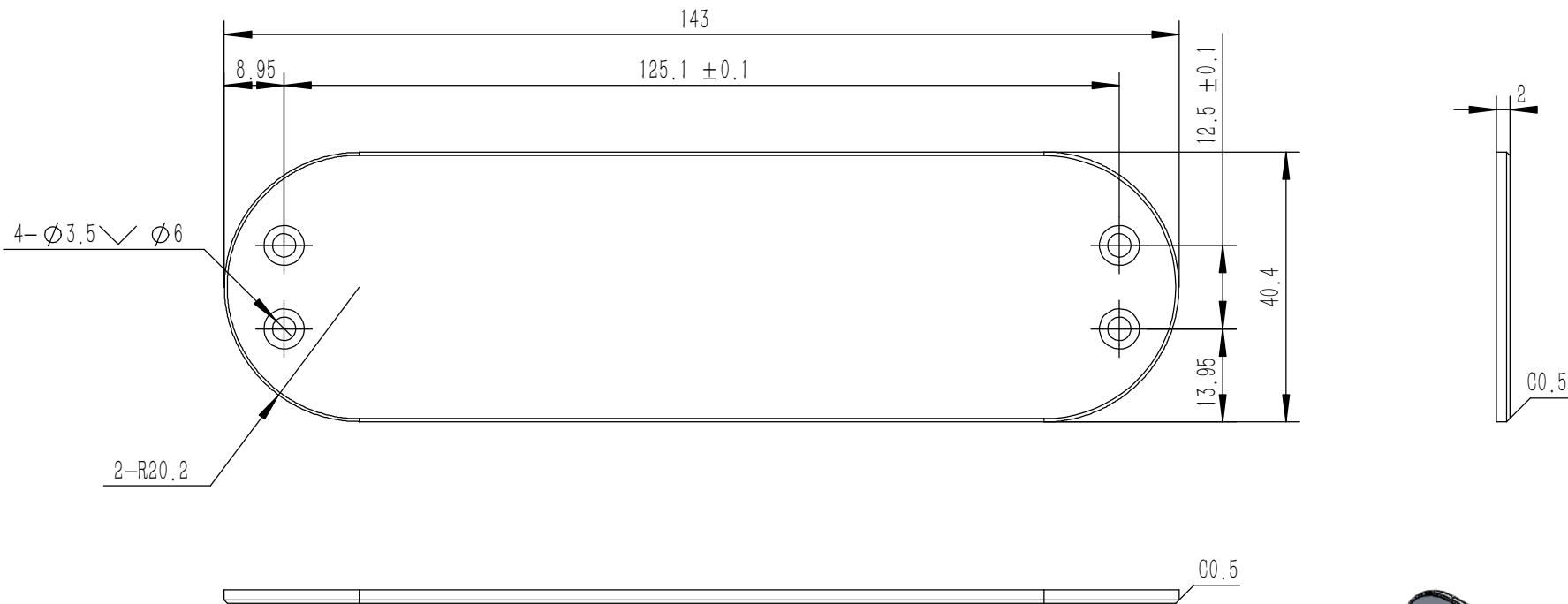
Material (材料):	6063-T5	Drawing Number (图号): YG-W29C-0000-002
Weight: (重量) (Kg)	0.209	
Protection: (表面处理):		Size (图幅): A3
Part Name (零/部件名称):	下壳	Scale (比例): 1:1
Drawn by (绘图): 莫永康	Date (日期): 2020.05.15	Revision (版本): A1
Check by (校对):	Date (日期):	Sheet (页数): 1 / 1
Signature by (批准):	Date (日期):	



技术要求:

- 1、零件加工表面不应有划痕、擦伤等损伤零件表面的缺陷;
- 2、去除毛刺飞边,锐角倒钝;
- 3、未标注尺寸见3D数模。

Tolerances (未注公差):		Material (材料):	6063-T5	YONGU 永固				
0.5 to 6	± 0.1	Weight: (重量) (Kg)	0.078					
6 to 30	± 0.2	Protection: (表面处理):		Drawing Number (图号): YG-W29C-0000-003				
30 to 120	± 0.3	Part Name (零/部件名称):	前面板					
120 to 400	± 0.4	Drawn by (绘图):	莫永康	Date (日期):	2020.05.15	Size (图幅):	A3	Sheet (页数): 1 / 1
Break sharp edges (未注锐边倒角): Ch 0.05 to 0.25 x45°		Angular tolerances (未注角度公差):		Check by (校对):	Date (日期):	Scale (比例):	1:1	
Position tolerances (未注位置公差): ±0.05		<6° ± 10'		Signature by (批准):	Date (日期):	Revision (版本):	A1	
		<30° ± 20'						
		<120° ± 30'						
		>120° ± 1°						

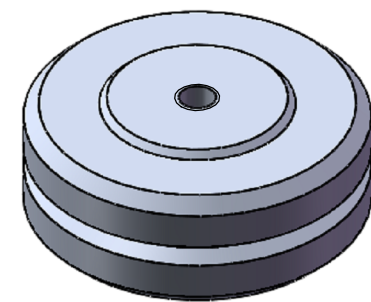
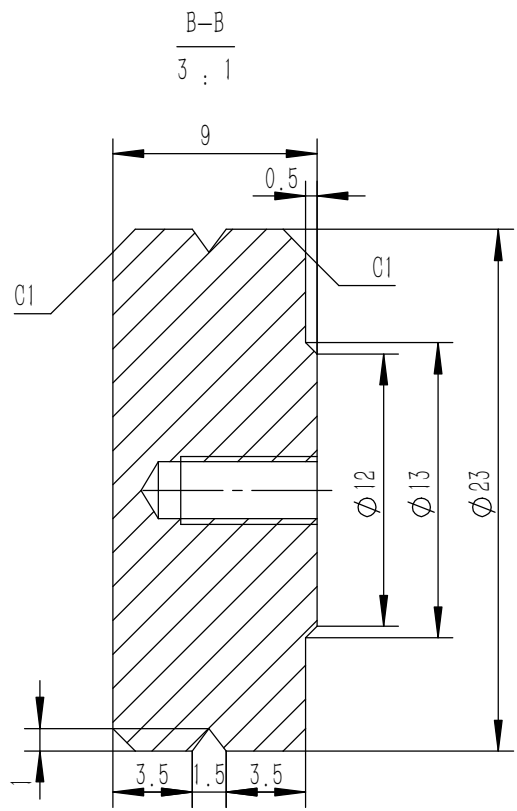
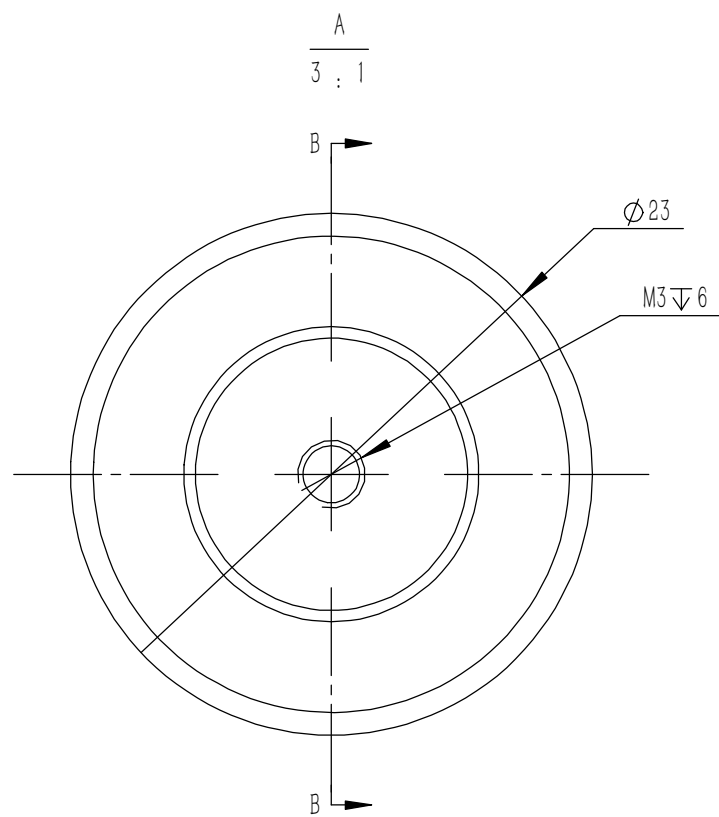
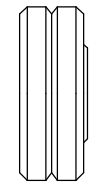
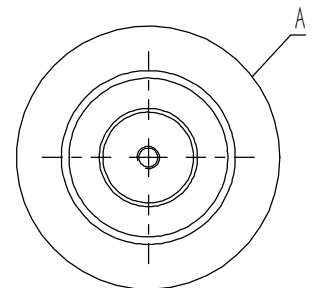


技术要求:

- 1、零件加工表面不应有划痕、擦伤等损伤零件表面的缺陷;
- 2、去除毛刺飞边,锐角倒钝;
- 3、未标注尺寸见3D数模。

Tolerances (未注公差): 0.5 to 6 ± 0.1 6 to 30 ± 0.2 30 to 120 ± 0.3 120 to 400 ± 0.4	Material (材料):	5052-H32		YONGU 永固
	Weight: (重量) (Kg)	0.029		
Break sharp edges (未注锐边倒角): Ch 0.05 to 0.25 x45°	Protection: (表面处理):			Drawing Number (图号): YG-W29C-0000-004
	Position tolerances (未注位置公差): ±0.05	Part Name (零/部件名称):	后面板	
Angular tolerances (未注角度公差): <6° ± 10' <30° ± 20' <120° ± 30' >120° ± 1°	Drawn by (绘图):	莫永康	Date (日期):	2020.05.15
	Check by (校对):		Date (日期):	
	Signature by (批准):		Date (日期):	
		Scale (比例):	1:1	
		Revision (版本):	A1	
		Sheet (页数):	1 / 1	

3.2



技术要求:

- 1、零件加工表面不应有划痕、擦伤等损伤零件表面的缺陷;
- 2、去除毛刺飞边, 锐角倒钝;
- 3、未标注尺寸见3D数模。

Tolerances (未注公差): 0.5 to 6 ± 0.1 6 to 30 ± 0.2 30 to 120 ± 0.3 120 to 400 ± 0.4	Material (材料): 5052-H32	YONGU 永固		
	Weight: (重量) (Kg) 0.009			
Break sharp edges (未注锐边倒角): Ch 0.05 to 0.25 x45°	Protection: (表面处理):	Part Name (零/部件名称): 机脚		
	Position tolerances (未注位置公差): ±0.05	Angular tolerances (未注角度公差): <6° ± 10' <30° ± 20' <120° ± 30' >120° ± 1°	Date (日期): 2020.05.15	Drawing Number (图号): YG-W29C-0000-005
	Drawn by (绘图): 莫永康	Date (日期):	Scale (比例): 1:1	Sheet (页数):
	Check by (校对):	Date (日期):	Revision (版本): A1	1 / 1
	Signature by (批准):	Date (日期):		