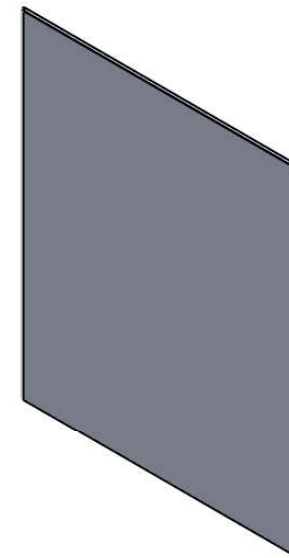
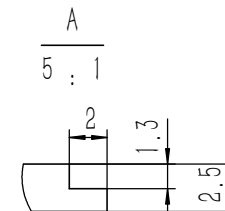
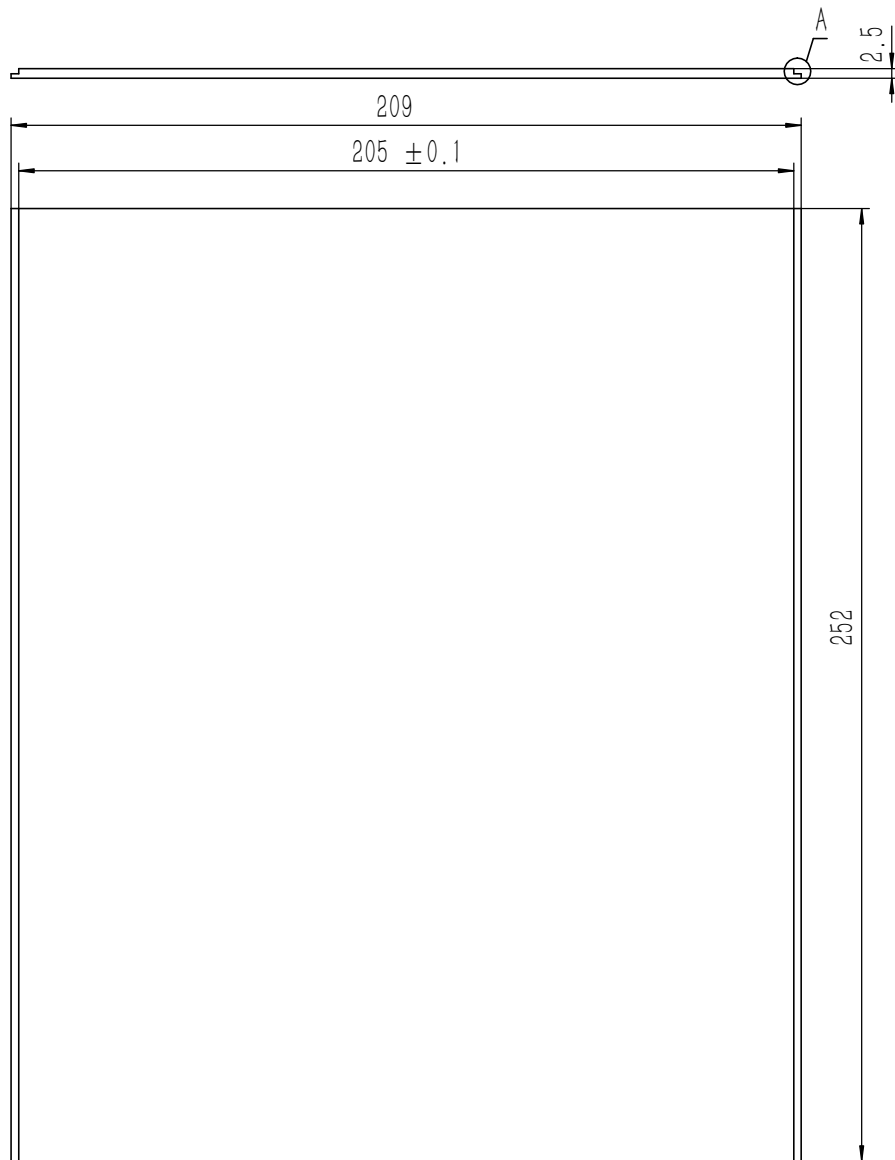


- 技术要求:
- 1、必须按照设计、工艺要求及本规定和有关标准进行装配;
  - 2、所有零部件(包括外购、外协件)必须具有检验合格证方能进行装配;
  - 3、零件在装配前必须清理和清洗干净,不得有毛刺、飞边、氧化皮、锈蚀、切屑、砂粒、灰尘和油污等,并应符合相应清洁度要求;
  - 4、装配过程中零件不得磕碰、划伤和锈蚀;
  - 5、油漆未干的零件不得进行装配;
  - 6、相对运动的零件,装配时接触面间应加润滑油脂;
  - 7、各零、部件装配后相对位置应准确。

序号	图号	名称	材料	数量	单重	备注
5	GB-T-819.1-2000-C-BE-M3X6	碳钢发黑十字沉头螺丝M3X6	普通碳钢	8	0.0004	
4	YG-G05C-0000-004	侧板	6063-T5	2	0.241	
3	YG-G05C-0000-003	底板	5052-H32	1	0.297	
2	YG-G05C-0000-002	上盖板	5052-H32	1	0.349	
1	YG-G05C-0000-001	前后面板	5052-H32	2	0.106	

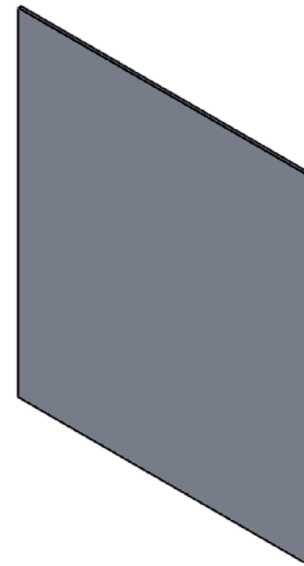
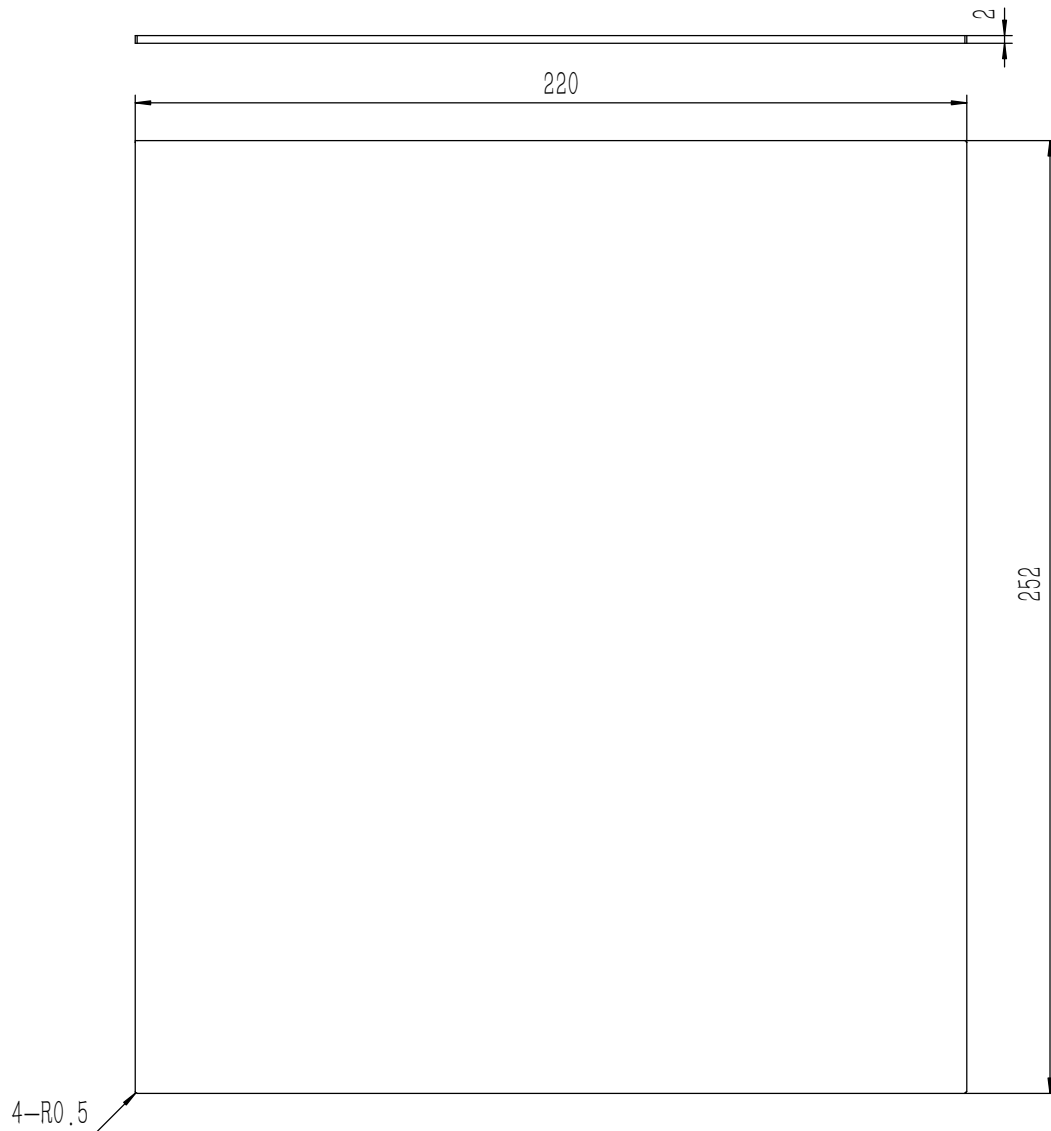
Tolerances (未注公差): 0.5 to 6 ± 0.1 6 to 30 ± 0.2 30 to 120 ± 0.3 120 to 400 ± 0.4		Material (材料): (装配图) Weight: (重量) (Kg): 1.343 Protection: (表面处理): Part Name (零/部件名称): G05C机箱		<b>YONGU</b> 永固 Drawing Number (图号): YG-G05C-0000-000	
Break sharp edges (未注锐边倒角): Ch 0.05 to 0.25 x45° Position tolerances (未注位置公差): ± 0.05		Angular tolerances (未注角度公差): <6° ± 10' <30° ± 20' <120° ± 30' >120° ± 1°		Drawn by (绘图): 莫永康 Date (日期): 2020.05.28 Size: (图幅): A1 Sheet (页数): 1 / 1	
		Check by (校对): Signature by (批准):		Date (日期): Date (日期): Scale (比例): 1:1 Revision (版本): A1	





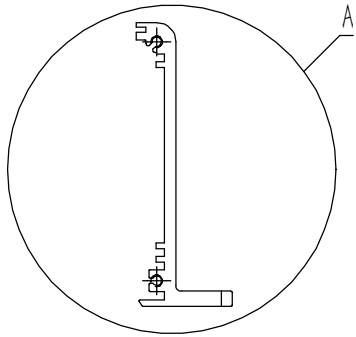
- 技术要求:
- 1、零件加工表面不应有划痕、擦伤等损伤零件表面的缺陷;
  - 2、去除毛刺飞边, 锐角倒钝;
  - 3、未标注尺寸见3D数模。

Tolerances (未注公差):	0.5 to 6	± 0.1	Material (材料):	5052-H32					
	6 to 30	± 0.2	Weight: (重量) (Kg):	0.349					
30 to 120	± 0.3	Protection: (表面处理):							
120 to 400	± 0.4	Part Name (零/部件名称):	上盖板		Drawing Number (图号):				
Break sharp edges (未注锐边倒角): Ch 0.05 to 0.25 x45°	Angular tolerances (未注角度公差):	<6° ± 10'	Drawn by (绘图):	莫永康	Date (日期):	2020.05.27	Size: (图幅):	A2	 Sheet (页数): 1 / 1
Position tolerances (未注位置公差):	<30° ± 20'	<120° ± 30'	Check by (校对):		Date (日期):		Scale (比例):	1:1	
±0.05	>120° ± 1°	>120° ± 1°	Signature by (批准):		Date (日期):		Revision (版本):	A1	

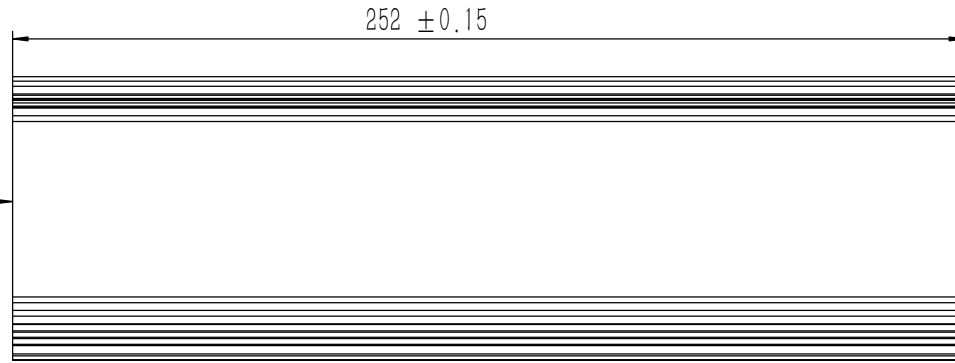


- 技术要求:
- 1、零件加工表面不应有划痕、擦伤等损伤零件表面的缺陷;
  - 2、去除毛刺飞边, 锐角倒钝;
  - 3、未标注尺寸见3D数模。

Tolerances (未注公差):	0.5 to 6	± 0.1	Material (材料):	5052-H32					
	6 to 30	± 0.2	Weight: (重量) (Kg):	0.297					
30 to 120	± 0.3	Protection: (表面处理):			Drawing Number (图号): YG-G05C-0000-003				
120 to 400	± 0.4	Part Name (零/部件名称):	底板						
Break sharp edges (未注锐边倒角): Ch 0.05 to 0.25 x45°	Angular tolerances (未注角度公差):	$<6^\circ$ ± 10' $<30^\circ$ ± 20' $<120^\circ$ ± 30' $>120^\circ$ ± 1°	Drawn by (绘图):	莫永康	Date (日期):	2020.05.27	Size: (图幅):	A2	 Sheet (页数): 1 / 1
Position tolerances (未注位置公差):	± 0.05	Check by (校对):			Date (日期):		Scale (比例):	1:1	
		Signature by (批准):			Date (日期):		Revision (版本):	A1	

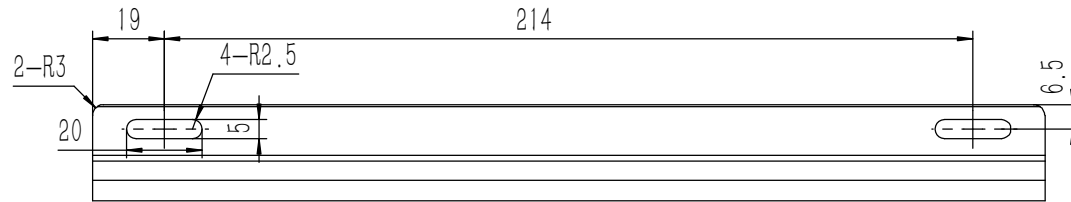
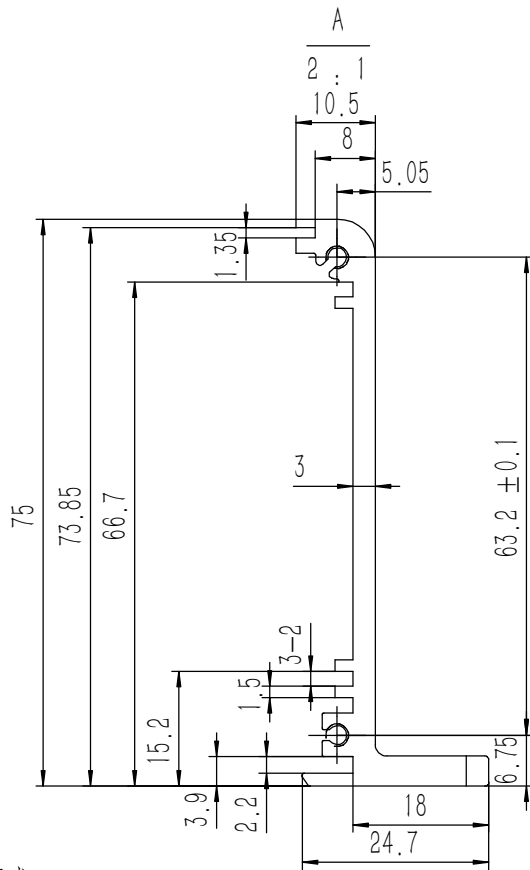


0.1 A



0.1 A

A



- 技术要求:
- 1、零件加工表面不应有划痕、擦伤等损伤零件表面的缺陷;
  - 2、去除毛刺飞边,锐角倒钝;
  - 3、未标注尺寸见3D数模。

Tolerances (未注公差):	
0.5 to 6	± 0.1
6 to 30	± 0.2
30 to 120	± 0.3
120 to 400	± 0.4

Material (材料): 6063-T5

Weight: (重量) (Kg): 0.241

Protection: (表面处理):

Part Name (零/部件名称):

侧板

Drawing Number (图号):

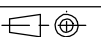
YG-G05C-0000-004

Break sharp edges (未注锐边倒角): Ch 0.05 to 0.25 x45°	Angular tolerances (未注角度公差):
	<6° ± 10'
Position tolerances (未注位置公差):	<30° ± 20'
±0.05	<120° ± 30'
	>120° ± 1°

Drawn by (绘图): 莫永康

Date (日期): 2020.05.27

Size: (图幅): A2



Check by (校对):

Date (日期):

Scale (比例): 1:1

Sheet (页数):

Signature by (批准):

Date (日期):

Revision (版本): A1

1 / 1

**YONGU** 永固