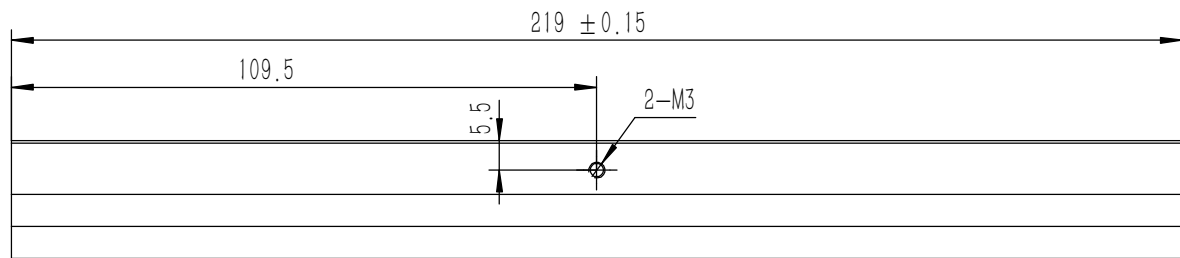
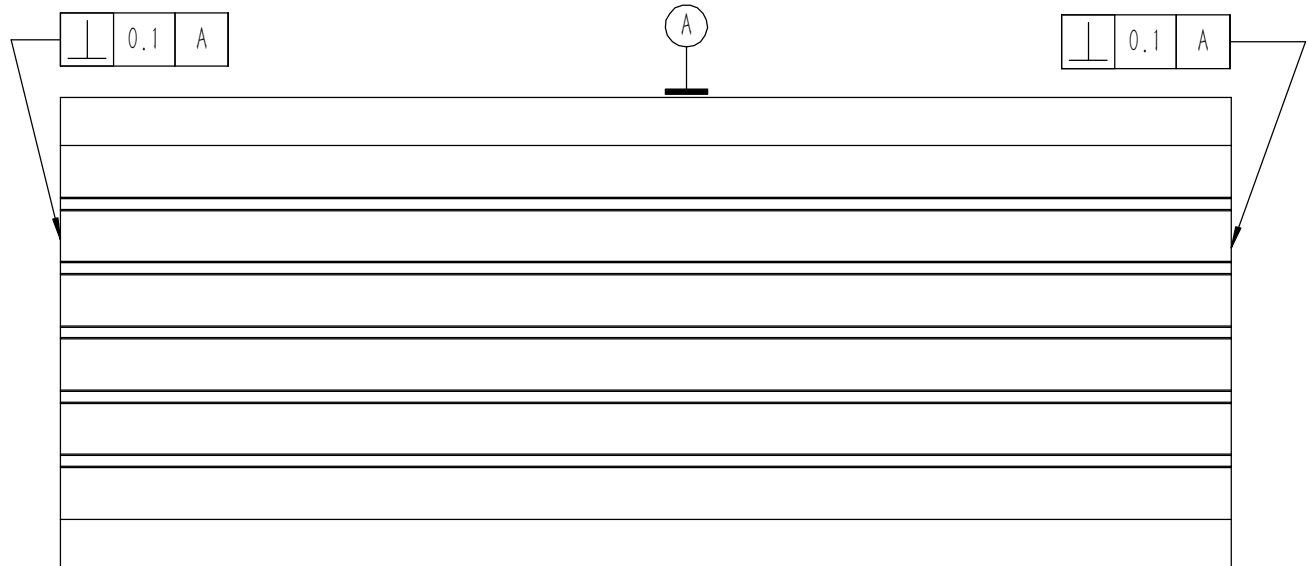
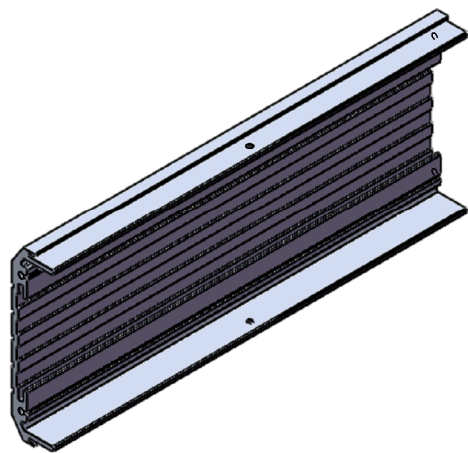
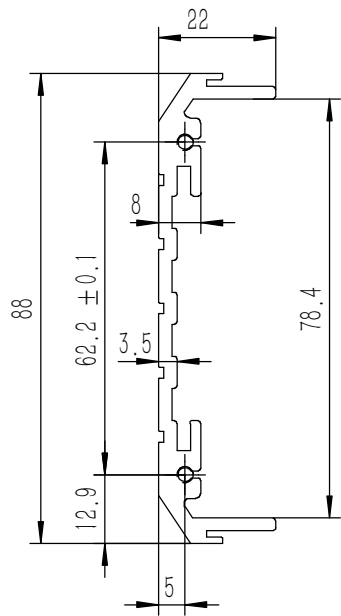


技术要求:

- 1、必须按照设计、工艺要求及本规定和有关标准进行装配;
- 2、所有零部件(包括外购、外协件)必须具有检验合格证方能进行装配;
- 3、零件在装配前必须清理和清洗干净,不得有毛刺、飞边、氧化皮、锈蚀、切屑、砂粒、灰尘和油污等,并应符合相应清洁度要求;
- 4、装配过程中零件不得磕碰、划伤和锈蚀;
- 5、油漆未干的零件不得进行装配;
- 6、相对运动的零件,装配时接触面间应加润滑油脂;
- 7、各零、部件装配后相对位置应准确。

序号	图号	名称	材料	数量	单重	备注
7	GB-T-70.1-2000-S-NL-M3X8	不锈钢内六角杯头螺 丝M3X8	SUS 304	4	0.001	
6	GB-T-819.1-2000-C-BE-M3X8	碳钢发黑十字沉头螺 丝M3X8	普通碳钢	4	0.0005	
5	GB-T-819.1-2000-C-BE-M3X6	碳钢发黑十字沉头螺 丝M3X6	普通碳钢	8	0.0004	
4	YG-W27B-0000-004	盖板	5052-H32	2	0.590	
3	YG-W27B-0000-003	后面板	6063-T5	1	0.376	
2	YG-W27B-0000-002	前面板	5052-H32	1	0.856	
1	YG-W27B-0000-001	侧板	6063-T5	2	0.260	

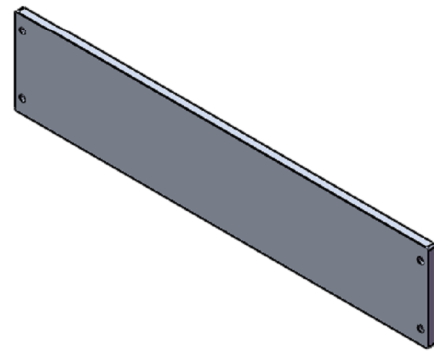
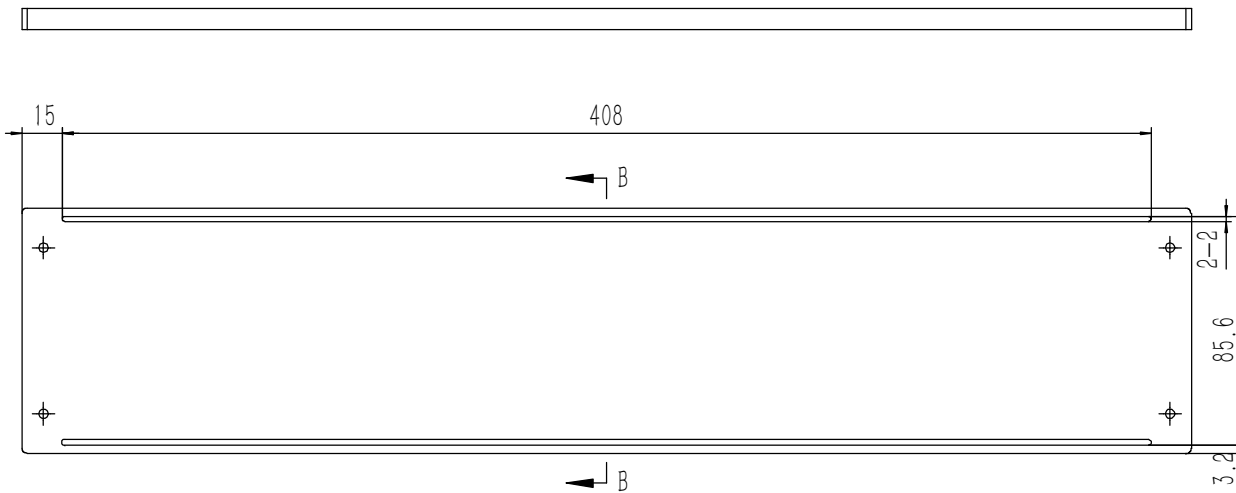
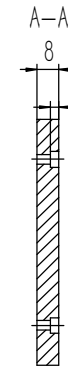
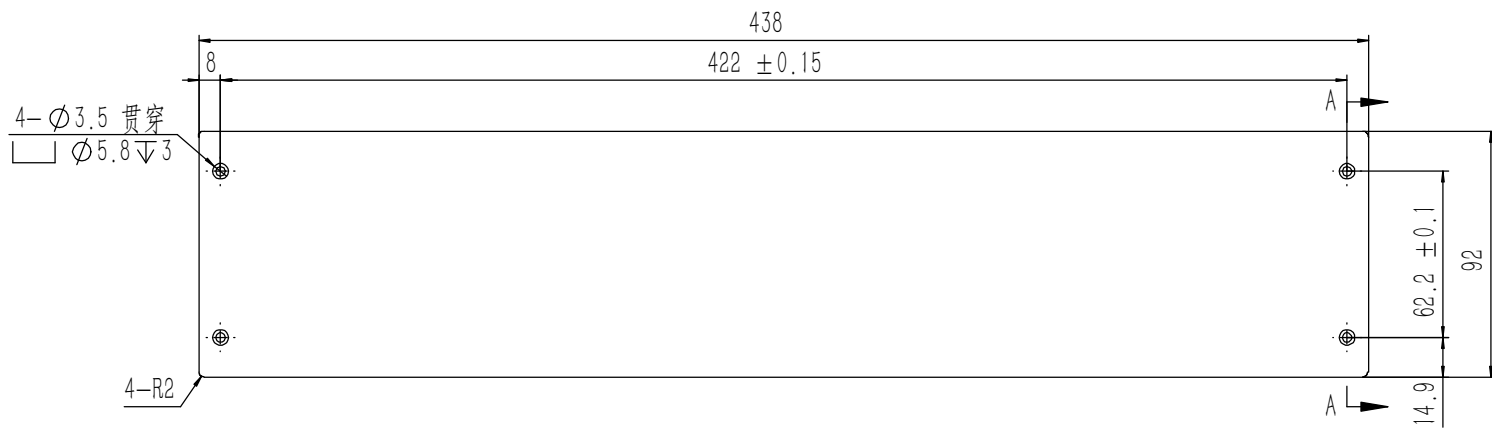
Tolerances (未注公差):		Material (材料): (装配图)		<b>YONGU</b> 永固	
0.5 to 6 ± 0.1		Weight: (重量) (Kg): 2.942			
6 to 30 ± 0.2		Protection: (表面处理):			
30 to 120 ± 0.3		Part Name (零/部件名称):			
120 to 400 ± 0.4		W27B功放		Drawing Number (图号): YG-W27B-0000-000	
Break sharp edges (未注锐边倒角): Ch 0.05 to 0.25 x45°		Angular tolerances (未注角度公差):		Size (图幅): A0	
<6° ± 10'		<30° ± 20'		Scale (比例): 1:1	
<120° ± 30'		>120° ± 1°		Sheet (页数):	
Position tolerances (未注位置公差): ± 0.05		Drawn by (绘图): 邓展锋		Date (日期): 2020.05.16	
		Check by (校对):		Date (日期):	
		Signature by (批准):		Date (日期):	
				Revision (版本): A1	
				1 / 1	



技术要求:

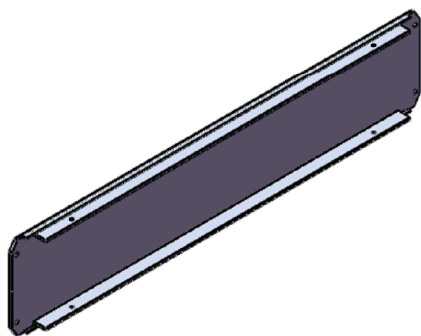
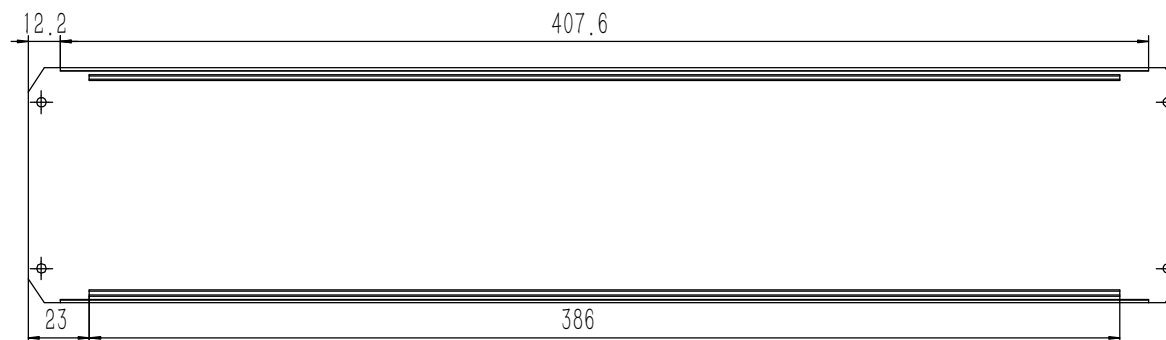
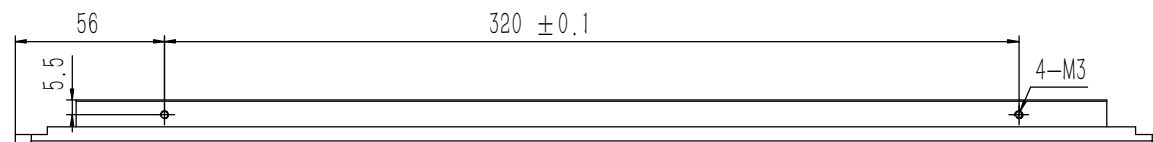
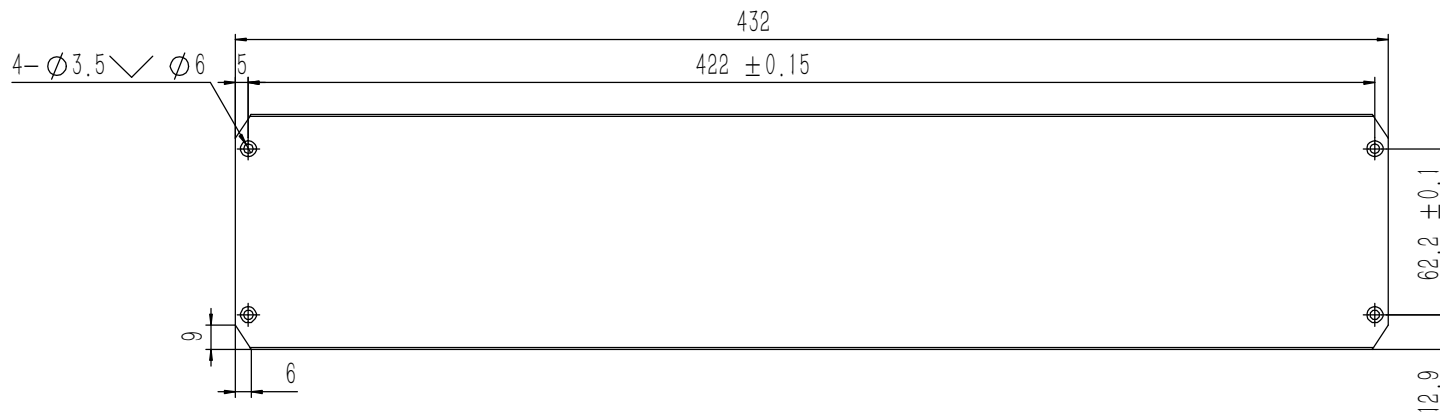
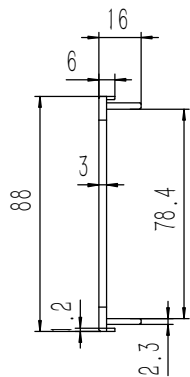
- 1、零件加工表面不应有划痕、擦伤等损伤零件表面的缺陷;
- 2、去除毛刺飞边, 锐角倒钝;
- 3、未标注尺寸见3D数模。

Tolerances (未注公差): 0.5 to 6 ± 0.1 6 to 30 ± 0.2 30 to 120 ± 0.3 120 to 400 ± 0.4	Material (材料):	6063-T5		<b>YONGU</b> 永固
	Weight: (重量) (Kg)	0.260		
Break sharp edges (未注锐边倒角): Ch 0.05 to 0.25 x45°	Protection: (表面处理):			Drawing Number (图号): YG-W27B-0000-001
	Part Name (零/部件名称):	侧板		
Position tolerances (未注位置公差): ±0.05	Angular tolerances (未注角度公差): <6° ± 10' <30° ± 20' <120° ± 30' >120° ± 1°	Part Name (零/部件名称):	侧板	
	Drawn by (绘图): 邓展锋	Date (日期): 2020.05.16	Size (图幅): A3	Sheet (页数): 1 / 1
Check by (校对):	Date (日期):	Scale (比例): 1:1		
Signature by (批准):	Date (日期):	Revision (版本): A1		



- 技术要求:
- 1、零件加工表面不应有划痕、擦伤等损伤零件表面的缺陷;
  - 2、去除毛刺飞边,锐角倒钝;
  - 3、未标注尺寸见3D数模。

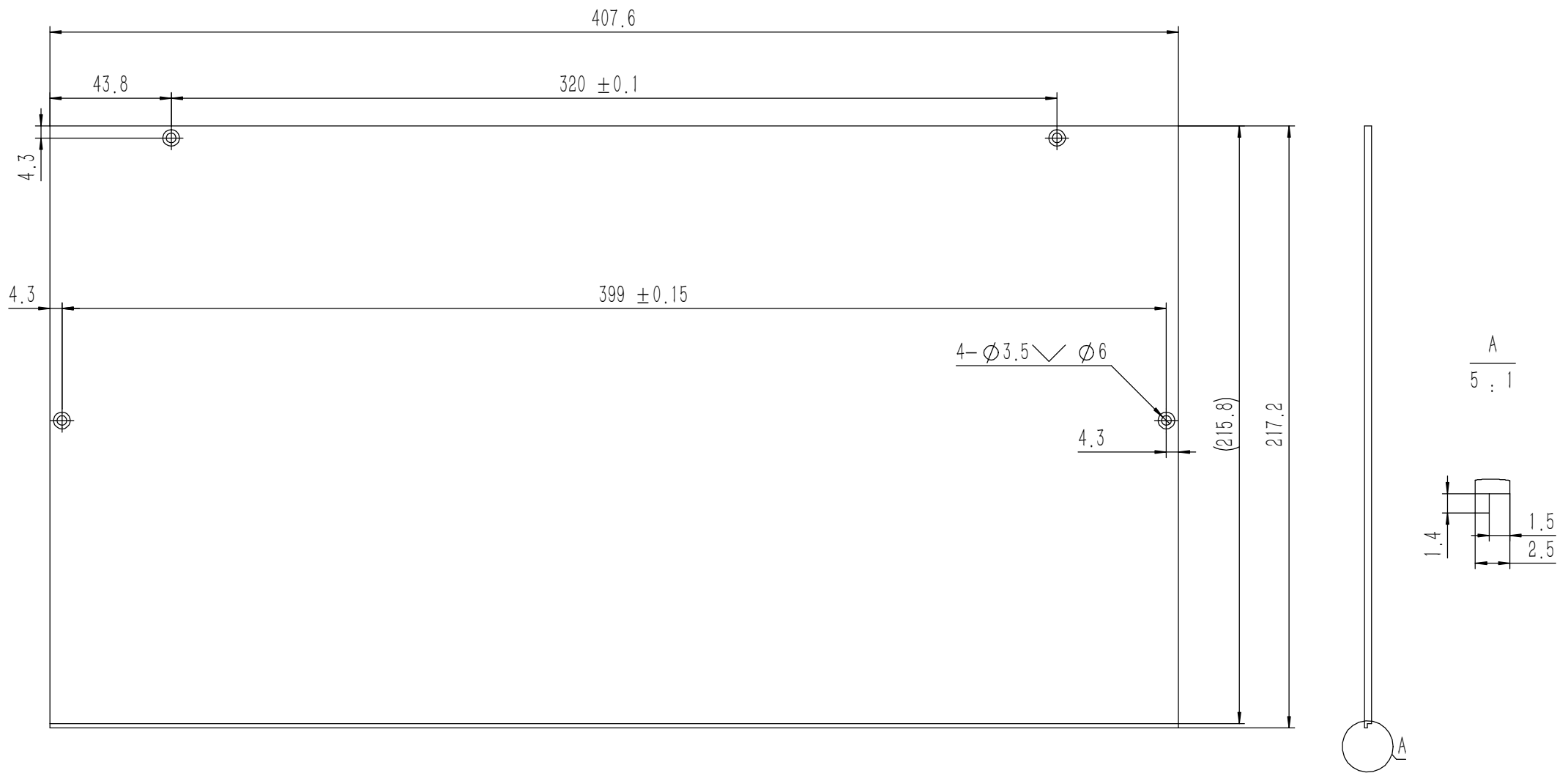
Tolerances (未注公差): 0.5 to 6 ± 0.1 6 to 30 ± 0.2 30 to 120 ± 0.3 120 to 400 ± 0.4	Material (材料):	5052-H32		<b>YONGU</b> 永固	
	Weight: (重量) (Kg):	0.856			
	Protection: (表面处理):				
	Part Name (零/部件名称):	前面板		Drawing Number (图号):	YG-W27B-0000-002
Break sharp edges (未注锐边倒角): Ch 0.05 to 0.25 x45°	Angular tolerances (未注角度公差): <6° ± 10' <30° ± 20' <120° ± 30' >120° ± 1°	Drawn by (绘图): 邓展锋	Date (日期): 2020.05.16	Size: (图幅): A1	
Position tolerances (未注位置公差): ±0.05		Check by (校对):	Date (日期):	Scale (比例): 1:1	Sheet (页数):
		Signature by (批准):	Date (日期):	Revision (版本): A1	1 / 1



技术要求:

- 1、零件加工表面不应有划痕、擦伤等损伤零件表面的缺陷;
- 2、去除毛刺飞边, 锐角倒钝;
- 3、未标注尺寸见3D数模。

Tolerances (未注公差): 0.5 to 6 ± 0.1 6 to 30 ± 0.2 30 to 120 ± 0.3 120 to 400 ± 0.4	Material (材料):	6063-T5		<b>YONGU</b> 永固			
	Weight: (重量) (Kg):	0.376					
Break sharp edges (未注锐边倒角): Ch 0.05 to 0.25 x45°	Protection: (表面处理):			Drawing Number (图号): YG-W27B-0000-003			
	Position tolerances (未注位置公差): ± 0.05	Part Name (零/部件名称): 后面板					
Angular tolerances (未注角度公差): <6° ± 10' <30° ± 20' <120° ± 30' >120° ± 1°	Drawn by (绘图):	邓展锋	Date (日期):	2020.05.16	Size: (图幅):	A1	Sheet (页数): 1 / 1
	Signature by (批准):		Date (日期):		Scale (比例):	1:1	
	Check by (校对):		Date (日期):		Revision (版本):	A1	



技术要求:

- 1、零件加工表面不应有划痕、擦伤等损伤零件表面的缺陷;
- 2、去除毛刺飞边,锐角倒钝;
- 3、未标注尺寸见3D数模。

<table border="1"> <tr> <td>Break sharp edges (未注锐边倒角): Ch 0.05 to 0.25 x45°</td> <td>Angular tolerances (未注角度公差): &lt;6° ± 10' &lt;30° ± 20' &lt;120° ± 30' &gt;120° ± 1°</td> </tr> <tr> <td>Position tolerances (未注位置公差): ±0.05</td> <td></td> </tr> </table>	Break sharp edges (未注锐边倒角): Ch 0.05 to 0.25 x45°	Angular tolerances (未注角度公差): <6° ± 10' <30° ± 20' <120° ± 30' >120° ± 1°	Position tolerances (未注位置公差): ±0.05		<table border="1"> <tr> <td>Tolerances (未注公差):</td> <td>Material (材料): 5052-H32</td> </tr> <tr> <td>0.5 to 6 ± 0.1</td> <td>Weight: (重量) (Kg): 0.590</td> </tr> <tr> <td>6 to 30 ± 0.2</td> <td>Protection: (表面处理):</td> </tr> <tr> <td>30 to 120 ± 0.3</td> <td>Part Name (零/部件名称):</td> </tr> <tr> <td>120 to 400 ± 0.4</td> <td>盖板</td> </tr> </table>	Tolerances (未注公差):	Material (材料): 5052-H32	0.5 to 6 ± 0.1	Weight: (重量) (Kg): 0.590	6 to 30 ± 0.2	Protection: (表面处理):	30 to 120 ± 0.3	Part Name (零/部件名称):	120 to 400 ± 0.4	盖板		<table border="1"> <tr> <td colspan="2">Drawing Number (图号):</td> </tr> <tr> <td colspan="2">YG-W27B-0000-004</td> </tr> </table>	Drawing Number (图号):		YG-W27B-0000-004	
	Break sharp edges (未注锐边倒角): Ch 0.05 to 0.25 x45°	Angular tolerances (未注角度公差): <6° ± 10' <30° ± 20' <120° ± 30' >120° ± 1°																			
	Position tolerances (未注位置公差): ±0.05																				
	Tolerances (未注公差):	Material (材料): 5052-H32																			
0.5 to 6 ± 0.1	Weight: (重量) (Kg): 0.590																				
6 to 30 ± 0.2	Protection: (表面处理):																				
30 to 120 ± 0.3	Part Name (零/部件名称):																				
120 to 400 ± 0.4	盖板																				
Drawing Number (图号):																					
YG-W27B-0000-004																					
	<table border="1"> <tr> <td>Drawn by (绘图): 邓展锋</td> <td>Date (日期): 2020.05.16</td> <td>Size: (图幅): A2</td> <td rowspan="2"> </td> </tr> <tr> <td>Check by (校对):</td> <td>Date (日期):</td> <td>Scale (比例): 1:1</td> </tr> </table>	Drawn by (绘图): 邓展锋	Date (日期): 2020.05.16	Size: (图幅): A2		Check by (校对):	Date (日期):	Scale (比例): 1:1	<table border="1"> <tr> <td>Sheet (页数):</td> </tr> <tr> <td>1 / 1</td> </tr> </table>	Sheet (页数):	1 / 1										
Drawn by (绘图): 邓展锋	Date (日期): 2020.05.16	Size: (图幅): A2																			
Check by (校对):	Date (日期):	Scale (比例): 1:1																			
Sheet (页数):																					
1 / 1																					
	<table border="1"> <tr> <td>Signature by (批准):</td> <td>Date (日期):</td> <td>Revision (版本): A1</td> </tr> </table>	Signature by (批准):	Date (日期):	Revision (版本): A1																	
Signature by (批准):	Date (日期):	Revision (版本): A1																			