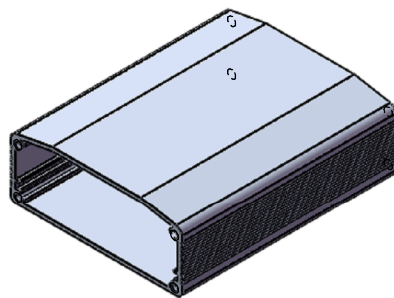
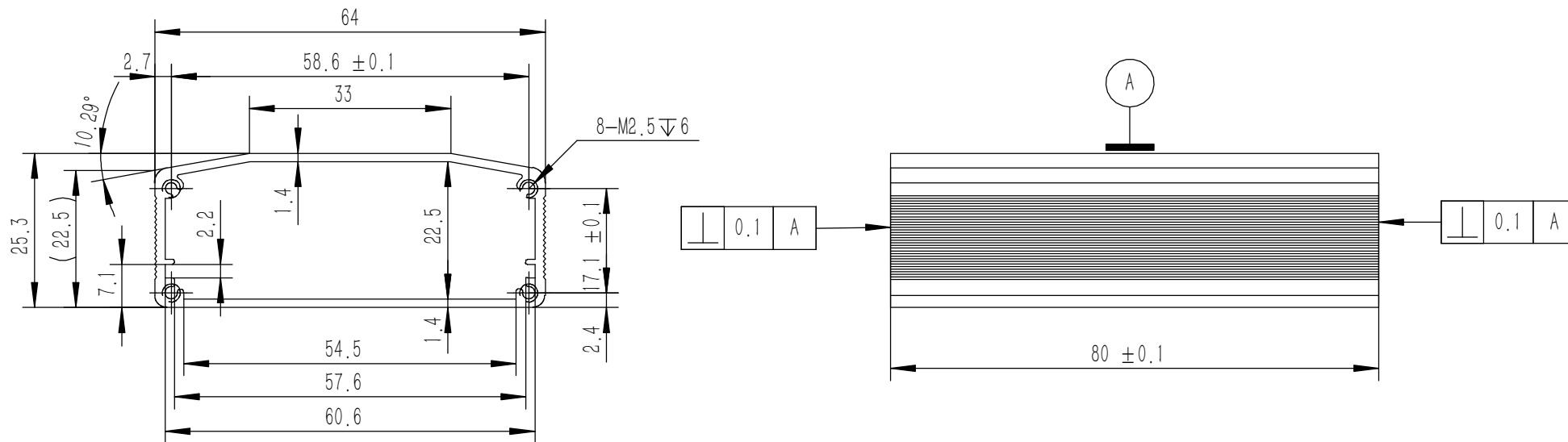


技术要求:

- 1、必须按照设计、工艺要求及本规定和有关标准进行装配;
- 2、所有零部件(包括外购、外协件)必须具有检验合格证方能进行装配;
- 3、零件在装配前必须清理和清洗干净,不得有毛刺、飞边、氧化皮、锈蚀、切屑、砂粒、灰尘和油污等,并应符合相应清洁度要求;
- 4、装配过程中零件不得磕碰、划伤和锈蚀;
- 5、油漆未干的零件不得进行装配;
- 6、相对运动的零件,装配时接触面间应加润滑油脂;
- 7、各零、部件装配后相对位置应准确。

| 序号 | 图号                          | 名称               | 材料       | 数量 | 单重     | 备注 |
|----|-----------------------------|------------------|----------|----|--------|----|
| 5  | GB-T-70.1-2000-S-NL-M2.5X6  | 不锈钢内六角杯头螺丝M2.5X6 | 普通碳钢     | 4  | 0.0005 |    |
| 4  | GB-T-819.1-2000-C-BE-M2.5X6 | 碳钢发黑十字沉头螺丝M2.5X6 | 普通碳钢     | 4  | 0.0003 |    |
| 3  | YG-W02C-0000-003            | 后面板              | 5052-H32 | 1  | 0.0082 |    |
| 2  | YG-W02C-0000-002            | 前面板              | 5052-H32 | 1  | 0.0178 |    |
| 1  | YG-W02C-0000-001            | 壳体               | 6063-T5  | 1  | 0.0563 |    |

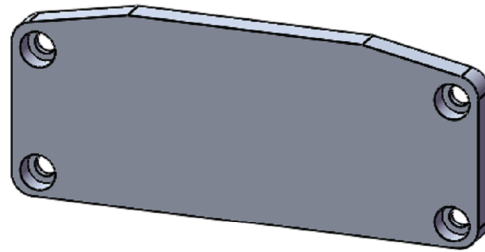
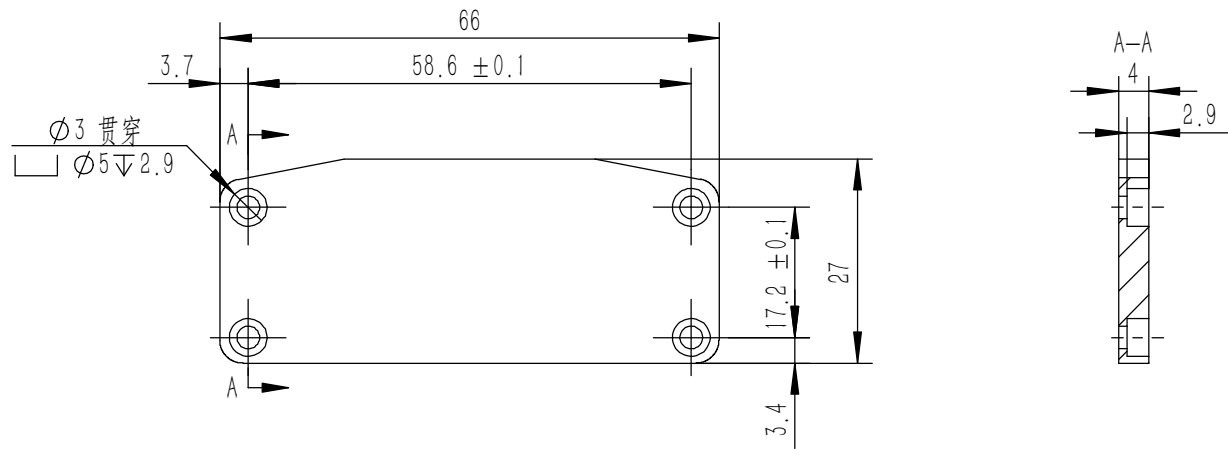
|   |   |  |                   |             |
|---|---|--|-------------------|-------------|
| Tolerances<br>(未注公差):<br>0.5 to 6 ± 0.1<br>6 to 30 ± 0.2<br>30 to 120 ± 0.3<br>120 to 400 ± 0.4 | Material (材料): (装配图)  | <b>YONGU</b> 永固                          |                   |             |
|   | Weight: (重量) (Kg) 0.0853  |  |                   |             |
| Break sharp edges<br>(未注锐边倒角):<br>Ch 0.05 to 0.25 x45°  | Protection: (表面处理):   | Drawing Number (图号):<br>YG-W02C-0000-000 |                   |             |
|   | Part Name (零/部件名称):<br>W02C功放   |  |                   |             |
| Position tolerances<br>(未注位置公差):<br>±0.05   | Angular tolerances<br>(未注角度公差):<br><6° ± 10'<br><30° ± 20'<br><120° ± 30'<br>>120° ± 1° | Drawn by (绘图): 邓展锋                       |                   |             |
|   | Check by (校对):  | Date (日期): 2020.05.16                    | Size: (图幅): A4    |             |
|   | Signature by (批准):  | Date (日期):                               | Scale (比例): 1:1   | Sheet (页数): |
|   |   | Date (日期):                               | Revision (版本): A1 | 1 / 1       |



技术要求:

- 1、零件加工表面不应有划痕、擦伤等损伤零件表面的缺陷;
- 2、去除毛刺飞边,锐角倒钝;
- 3、未标注尺寸见3D数模。

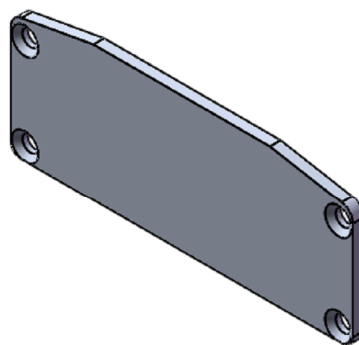
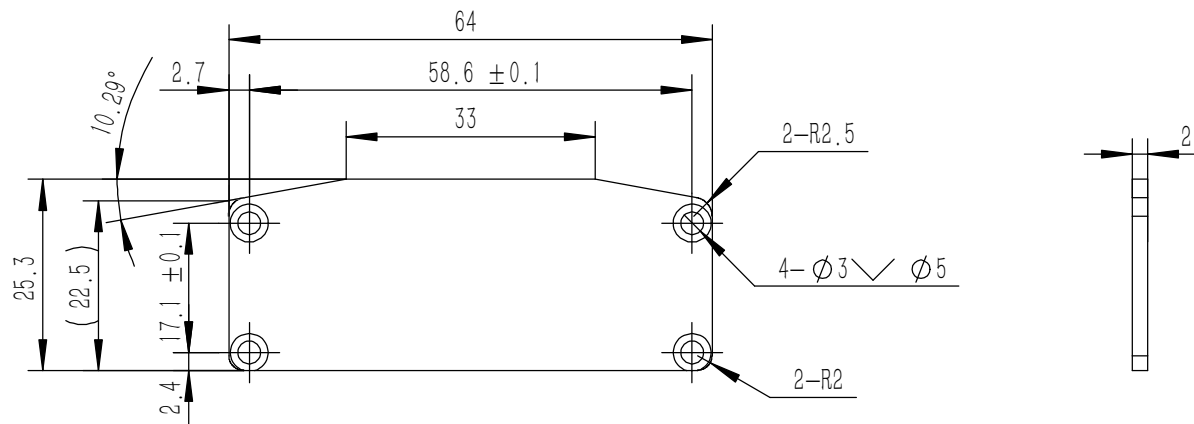
|   |   |   |                       |                                       |
|---|---|---|-----------------------|---------------------------------------|
| Tolerances<br>(未注公差):<br>0.5 to 6 ± 0.1<br>6 to 30 ± 0.2<br>30 to 120 ± 0.3<br>120 to 400 ± 0.4 | Material (材料): 6063-T5                    | <b>YONGU</b> 永固   |                       |                                       |
|   | Weight: (重量) (Kg) 0.056                   |   |                       |                                       |
| Break-sharp-edges<br>(未注锐边倒角):<br>Ch 0.05 to 0.25 x45°  | Protection: (表面处理):                       | Part Name (零/部件名称): 壳体  |                       |                                       |
|   | Position tolerances<br>(未注位置公差):<br>±0.05 | Angular-tolerances<br>(未注角度公差):<br><6° ± 10'<br><30° ± 20'<br><120° ± 30'<br>>120° ± 1° | Date (日期): 2020.05.16 | Drawing Number (图号): YG-W02C-0000-001 |
| Drawn by (绘图): 邓展锋  |   | Date (日期):  | Scale (比例): 1:1       | Sheet (页数):                           |
| Check by (校对):  |   | Date (日期):  | Revision (版本): A1     | 1 / 1                                 |
| Signature by (批准):  |   | Date (日期):  |                       |                                       |



技术要求:

- 1、零件加工表面不应有划痕、擦伤等损伤零件表面的缺陷;
- 2、去除毛刺飞边, 锐角倒钝;
- 3、未标注尺寸见3D数模。

|   |   |   |                         |                                       |
|---|---|---|-------------------------|---------------------------------------|
| Tolerances<br>(未注公差):<br>0.5 to 6 ± 0.1<br>6 to 30 ± 0.2<br>30 to 120 ± 0.3<br>120 to 400 ± 0.4 | Material (材料): 5052-H32                   | <b>YONGU</b> 永固   |                         |                                       |
|   | Weight: (重量) (Kg) 0.018                   |   |                         |                                       |
| Break sharp edges<br>(未注锐边倒角):<br>Ch 0.05 to 0.25 x45°  | Protection: (表面处理):                       | Part Name (零/部件名称): 前面板   |                         |                                       |
|   | Position tolerances<br>(未注位置公差):<br>±0.05 | Angular tolerances<br>(未注角度公差):<br><6° ± 10'<br><30° ± 20'<br><120° ± 30'<br>>120° ± 1° | Part Name (零/部件名称): 前面板 | Drawing Number (图号): YG-W02C-0000-002 |
|   | Drawn by (绘图): 邓展锋                        | Date (日期): 2020.05.16   | Size: (图幅): A4          | Sheet (页数): 1 / 1                     |
|   | Check by (校对):                            | Date (日期):  | Scale (比例): 1:1         |                                       |
|   | Signature by (批准):                        | Date (日期):  | Revision (版本): A1       |                                       |



技术要求:

- 1、零件加工表面不应有划痕、擦伤等损伤零件表面的缺陷;
- 2、去除毛刺飞边, 锐角倒钝;
- 3、未标注尺寸见3D数模。

|   |   |                     |            |  |
|---|---|---------------------|------------|--|
| Tolerances<br>(未注公差):<br>0.5 to 6 ± 0.1<br>6 to 30 ± 0.2<br>30 to 120 ± 0.3<br>120 to 400 ± 0.4 | Material (材料):                            | 5052-H32            |            | <b>YONGU</b> 永固                          |
|   | Weight: (重量) (Kg)                         | 0.008               |            |  |
| Break sharp edges<br>(未注锐边倒角):<br>Ch 0.05 to 0.25 x45°  | Protection: (表面处理):                       |                     |            | Drawing Number (图号):<br>YG-W02C-0000-003 |
|   | Position tolerances<br>(未注位置公差):<br>±0.05 | Part Name (零/部件名称): | 后面板        |  |
| Angular tolerances<br>(未注角度公差):<br><6° ± 10'<br><30° ± 20'<br><120° ± 30'<br>>120° ± 1°         | Drawn by (绘图):                            | 邓展锋                 | Date (日期): | 2020.05.16                               |
|   | Check by (校对):                            |                     | Date (日期): |  |
|   | Signature by (批准):                        |                     | Date (日期): |  |
|   | Scale (比例):                               | 1:1                 |            | Sheet (页数):                              |
|   | Revision (版本):                            | A1                  |            | 1 / 1                                    |