

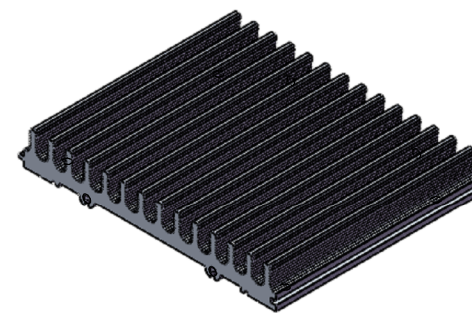
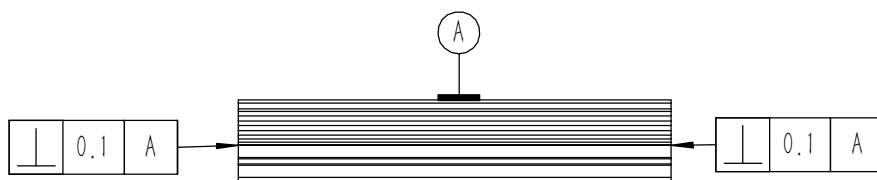
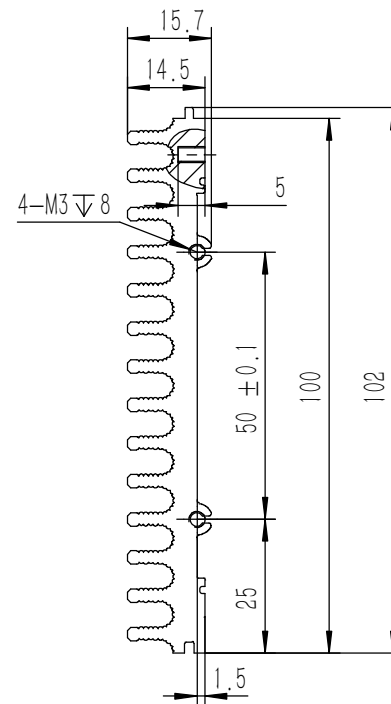
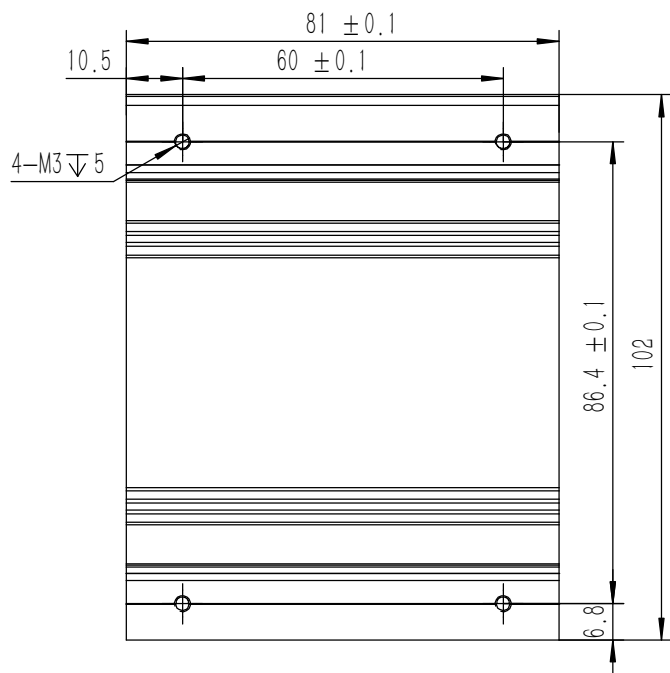
21	DIN-9250-S-NL-M3	不锈钢防松垫圈	SUS 304	8	0.000	
20	YG-TY-XJD-001	自粘胶垫35X11X3	硅橡胶	8	0.0013	
19	GB-T-70_3-2000-C-NI-M3X6	芳生镀白镍内六角沉头螺丝M3X6	普通碳钢	8	0.0004	
18	YG-TY-A12-005	前后面板-2U	5052-H32	2	0.460	
17	YG-TY-A10-002	面板上固定件2	电解板	2	0.049	
16	YG-TY-A07-001	后防护条-2U	5052-H32	2	0.036	
15	YG-TY-A05-001	A包角1	6063-T5	4	0.043	
14	YG-TY-A09-001	侧板连接件 2U	电解板	4	0.022	
13	BSO-M3-5-ZI-D5_4	压铆螺柱 M3X5	普通碳钢	8	0.001	
12	YG-TY-A13-007	A垫板	5052-H32	1	0.410	
11	YG-TY-A05-002	A包角2	6063-T5	4	0.043	
10	GB-T-973-1976-C-NI-M3X12	碳钢镀锌十字大扁头螺丝M3X12	普通碳钢	16	0.001	
9	YG-TY-A01-007	上下盖板	5052-H32	1	0.764	
8	YG-TY-A11-002	面板下固定件2	电解板	2	0.056	
7	YG-TY-A06-001	拉手-2U	6063-T5	2	0.070	
6	S-M3-1-ZI	压铆螺母镀白锌M3X1	普通碳钢	8	0.3750	
5	YG-TY-A02-007	上盖板	5052-H32	1	0.736	
4	YG-TY-A08-001	侧板固定件-2U	6063-T5	4	0.029	
3	YG-TY-A03-001	组合侧板	6063-T5	6	0.177	
2	GB-T-973-1976-C-NI-M3X4	碳钢镀锌十字大扁头螺丝M3X4	普通碳钢	34	0.0005	
1	GB-T-973-1976-C-NI-M3X6	碳钢镀锌十字大扁头螺丝M3X6	普通碳钢	16	0.0006	
序号	图号	名称	材料	数量	单重	备注

技术要求:

- 1、必须按照设计、工艺要求及本规定和有关标准进行装配;
- 2、所有零部件(包括外购、外协件)必须具有检验合格方能进行装配;
- 3、零件在装配前必须清理和清洗干净,不得有毛刺、飞边、氧化皮、锈蚀、切屑、砂粒、灰尘和油污等,并应符合相应清洁度要求;
- 4、装配过程中零件不得磕碰、划伤和锈蚀;
- 5、油漆未干的零件不得进行装配;
- 6、相对运动的零件,装配时接触面间应加润滑油脂;
- 7、各零、部件装配后相对位置应准确。

Break sharp edges (未注锐边倒角): Ch 0.05 to 0.25 x45°	Angular tolerances (未注角度公差): <6° ± 10' <30° ± 20' <120° ± 30' >120° ± 1°
Position tolerances (未注位置公差): ± 0.05	

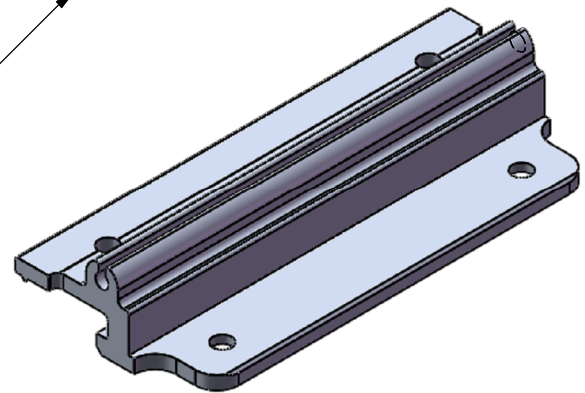
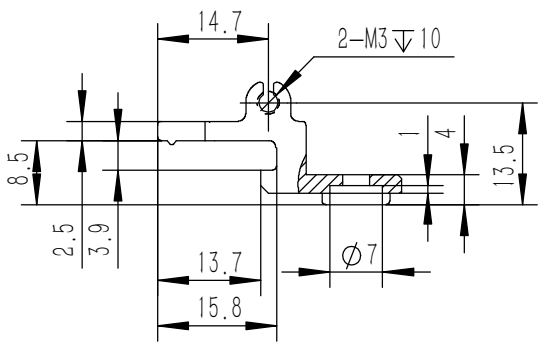
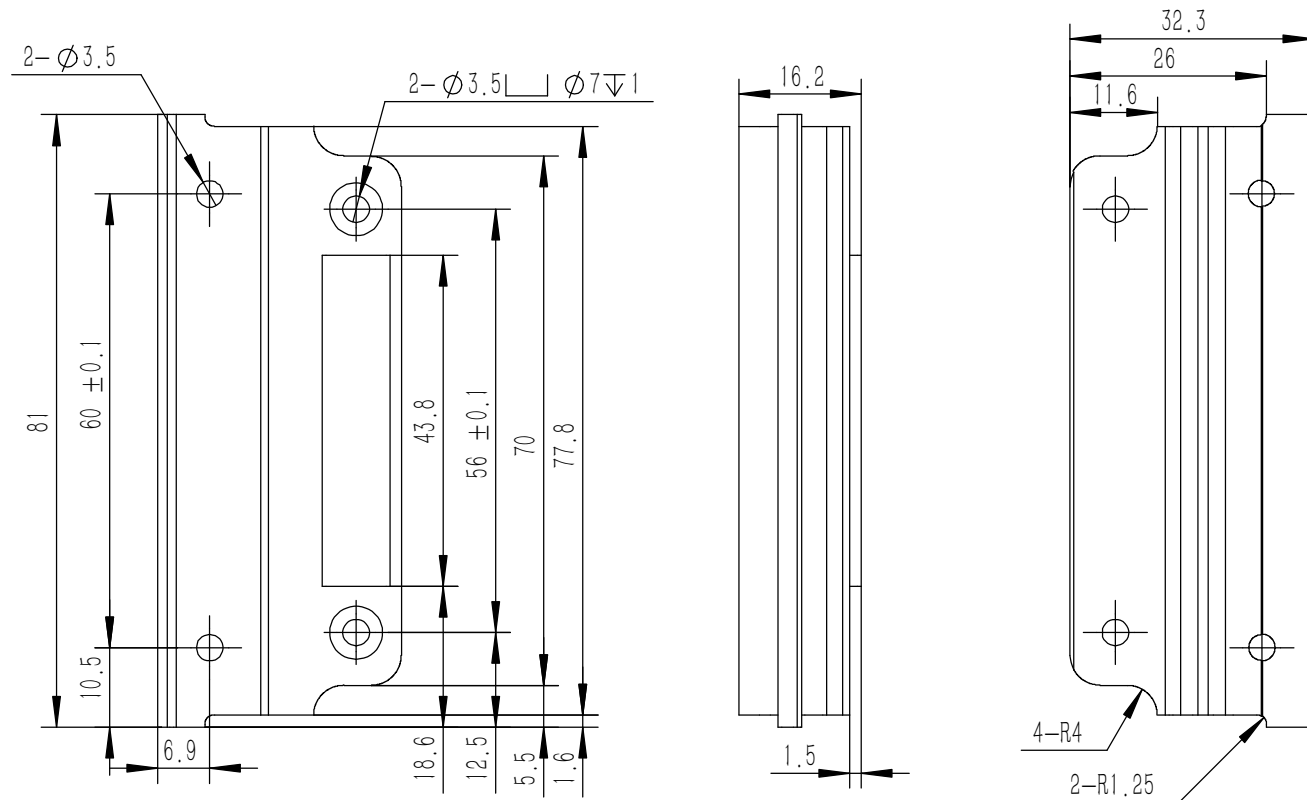
Tolerances (未注公差): 0.5 to 6 ± 0.1 6 to 30 ± 0.2 30 to 120 ± 0.3 120 to 400 ± 0.4	Material (材料): Weight: (重量) (Kg): Protection: (表面处理): Part Name (零/部件名称):	(装配图) 4.933 A05机箱		Drawing Number (图号): YG-A05-1000-000
Drawn by (绘图): 邓展锋 Check by (校对): Signature by (批准):	Date (日期): 2020.05.22 Date (日期): Date (日期):	Size (图幅): A0 Scale (比例): 1:1.2 Revision (版本): A1		Sheet (页数): 1 / 1



技术要求:

- 1、零件加工表面不应有划痕、擦伤等损伤零件表面的缺陷;
- 2、去除毛刺飞边,锐角倒钝;
- 3、未标注尺寸见3D数模。

Tolerances (未注公差): 0.5 to 6 ± 0.1 6 to 30 ± 0.2 30 to 120 ± 0.3 120 to 400 ± 0.4	Material (材料):	6063-T5		YONGU 永固
	Weight: (重量) (Kg)	0.177		
Break sharp edges (未注锐边倒角): Ch 0.05 to 0.25 x45°	Protection: (表面处理):	Part Name (零/部件名称):		Drawing Number (图号):
Angular tolerances (未注角度公差): <6° ± 10' <30° ± 20' <120° ± 30' >120° ± 1°	组合侧板		YG-TY-A03-001	
Position tolerances (未注位置公差): ±0.05	Drawn by (绘图): 莫永康	Date (日期): 2020.05.15	Size: (图幅): A3	Sheet (页数): 1 / 1
	Check by (校对):	Date (日期):	Scale (比例): 1:1	
	Signature by (批准):	Date (日期):	Revision (版本): A1	

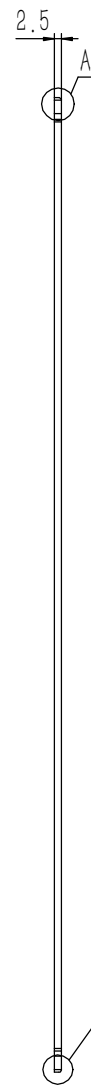
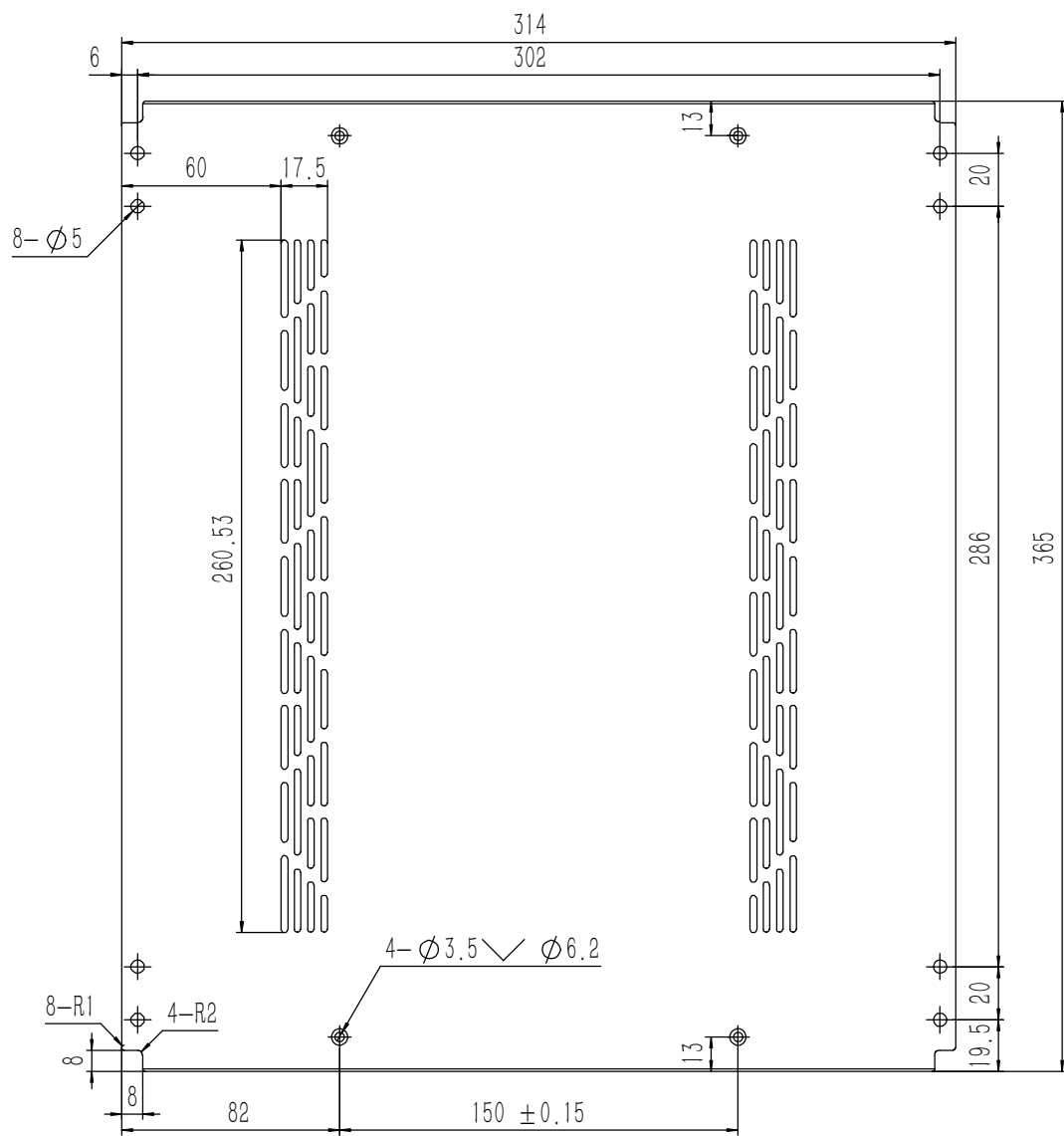


技术要求:

- 1、零件加工表面不应有划痕、擦伤等损伤零件表面的缺陷;
- 2、去除毛刺飞边, 锐角倒钝;
- 3、未标注尺寸见3D数模。

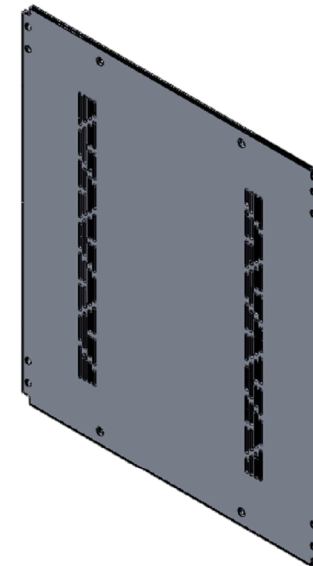
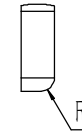
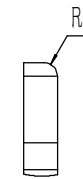
Tolerances (未注公差): 0.5 to 6 ± 0.1 6 to 30 ± 0.2 30 to 120 ± 0.3 120 to 400 ± 0.4	Material (材料):	6063-T5	
	Weight: (重量) (Kg)	0.029	
	Protection: (表面处理):		
	Part Name (零/部件名称):	侧板固定件-2U	
Break sharp edges (未注锐边倒角): Ch 0.05 to 0.25 x45° Position tolerances (未注位置公差): ±0.05	Angular tolerances (未注角度公差): <6° ± 10' <30° ± 20' <120° ± 30' >120° ± 1°	Drawing Number (图号): YG-TY-A08-001	Size: (图幅): A4
Drawn by (绘图): 邓展锋	Date (日期): 2020.05.18	Scale (比例): 1:1	Sheet (页数):
Check by (校对):	Date (日期):	Revision (版本): A1	0 / 0
Signature by (批准):	Date (日期):		





A
5 : 1

B
5 : 1



技术要求:

- 1、零件加工表面不应有划痕、擦伤等损伤零件表面的缺陷;
- 2、去除毛刺飞边, 锐角倒钝;
- 3、未标注尺寸见3D数模。

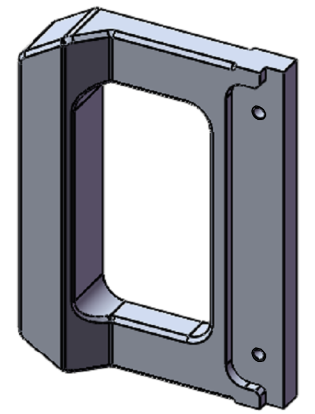
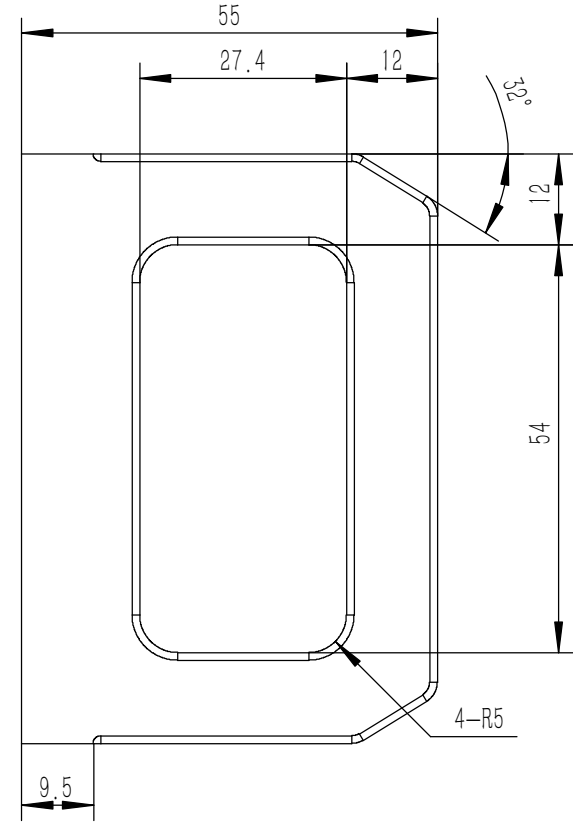
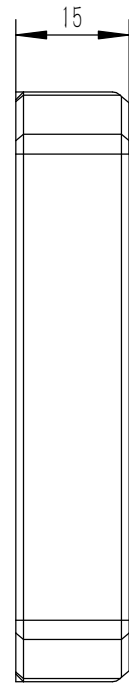
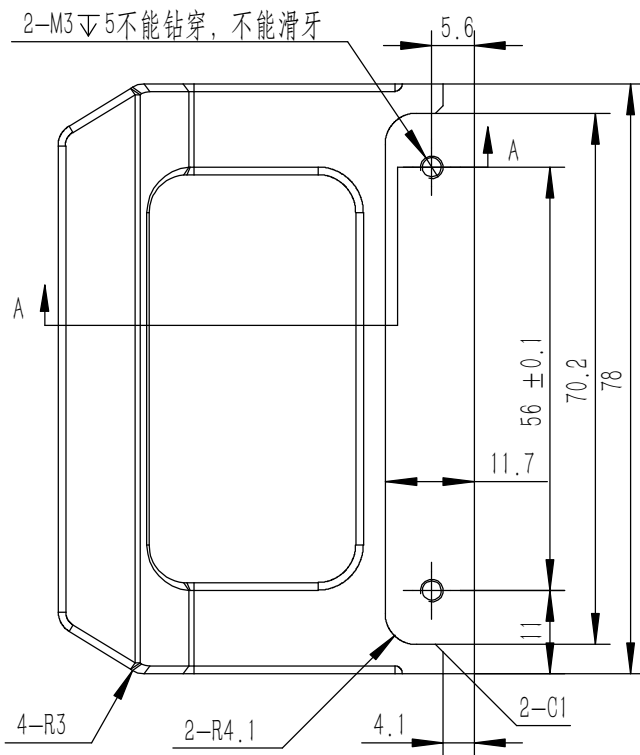
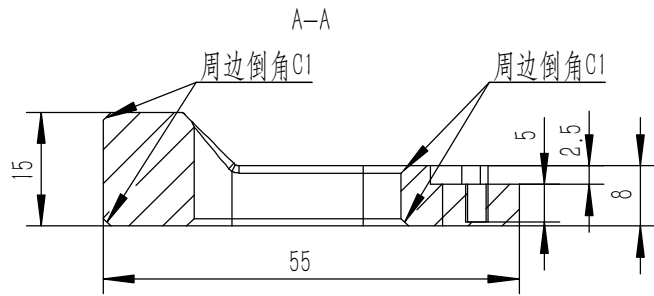
Tolerances (未注公差):	
0.5 to 6	± 0.1
6 to 30	± 0.2
30 to 120	± 0.3
120 to 400	± 0.4

Material (材料):	5052-H32
Weight: (重量) (Kg):	0.736
Protection: (表面处理):	
Part Name (零/部件名称):	上盖板



Break sharp edges (未注锐边倒角): Ch 0.05 to 0.25 x45°	Angular tolerances (未注角度公差):
	<6° ± 10'
	<30° ± 20'
	<120° ± 30'
	>120° ± 1°
Position tolerances (未注位置公差):	± 0.05

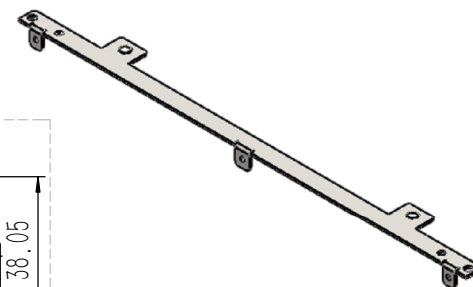
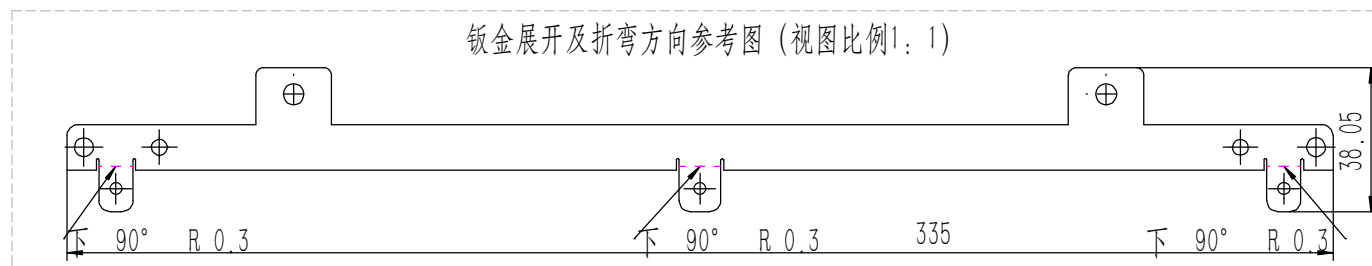
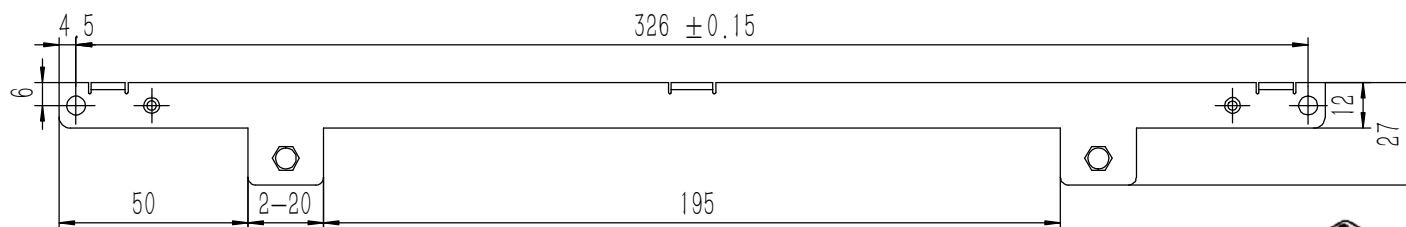
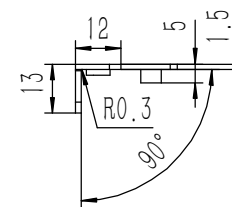
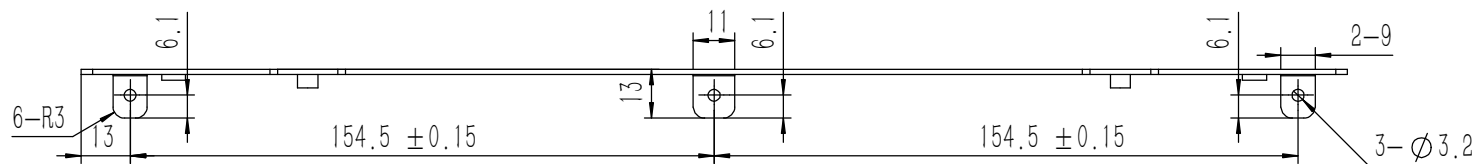
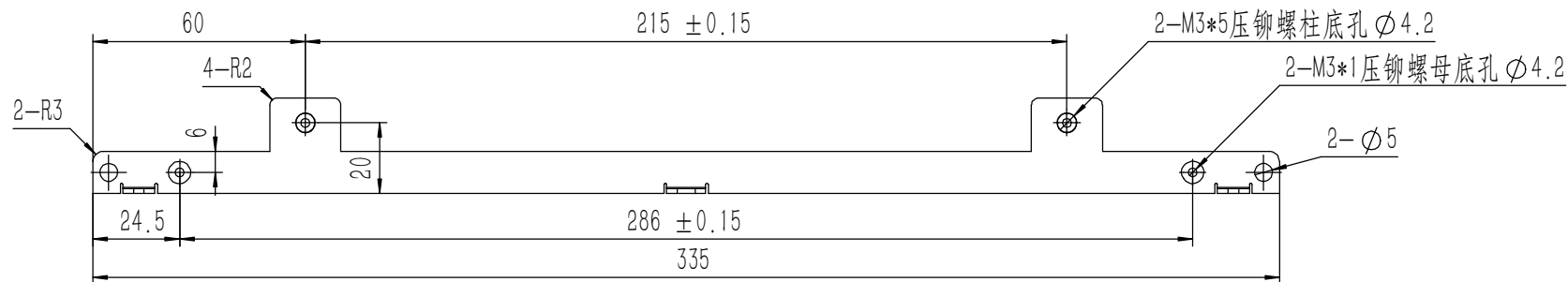
Drawing Number (图号): YG-TY-A02-007		Size: (图幅): A1		Sheet (页数):	
Drawn by (绘图): 莫永康	Date (日期): 2020.05.18	Scale (比例): 1:1	Revision (版本): A1		
Check by (校对):	Date (日期):	1 / 1			
Signature by (批准):	Date (日期):				



技术要求:

- 1、零件加工表面不应有划痕、擦伤等损伤零件表面的缺陷;
- 2、去除毛刺飞边, 锐角倒钝;
- 3、未标注尺寸见3D数模。

Tolerances (未注公差): 0.5 to 6 ± 0.1 6 to 30 ± 0.2 30 to 120 ± 0.3 120 to 400 ± 0.4	Material (材料): 6063-T5	YONGU 永固	
	Weight: (重量) (Kg) 0.070		
Break sharp edges (未注锐边倒角): Ch 0.05 to 0.25 x45°	Protection: (表面处理):	Part Name (零/部件名称): 拉手-2U	
	Position tolerances (未注位置公差): ±0.05	Angular tolerances (未注角度公差): <6° ± 10' <30° ± 20' <120° ± 30' >120° ± 1°	Drawing Number (图号): YG-TY-A06-001
Drawn by (绘图): 邓展锋		Date (日期): 2020.05.18	Size: (图幅): A4
Check by (校对):		Date (日期):	Scale (比例): 1:1
Signature by (批准):		Date (日期):	Revision (版本): A1
			Sheet (页数): 1 / 1

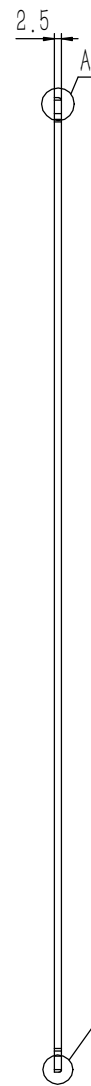
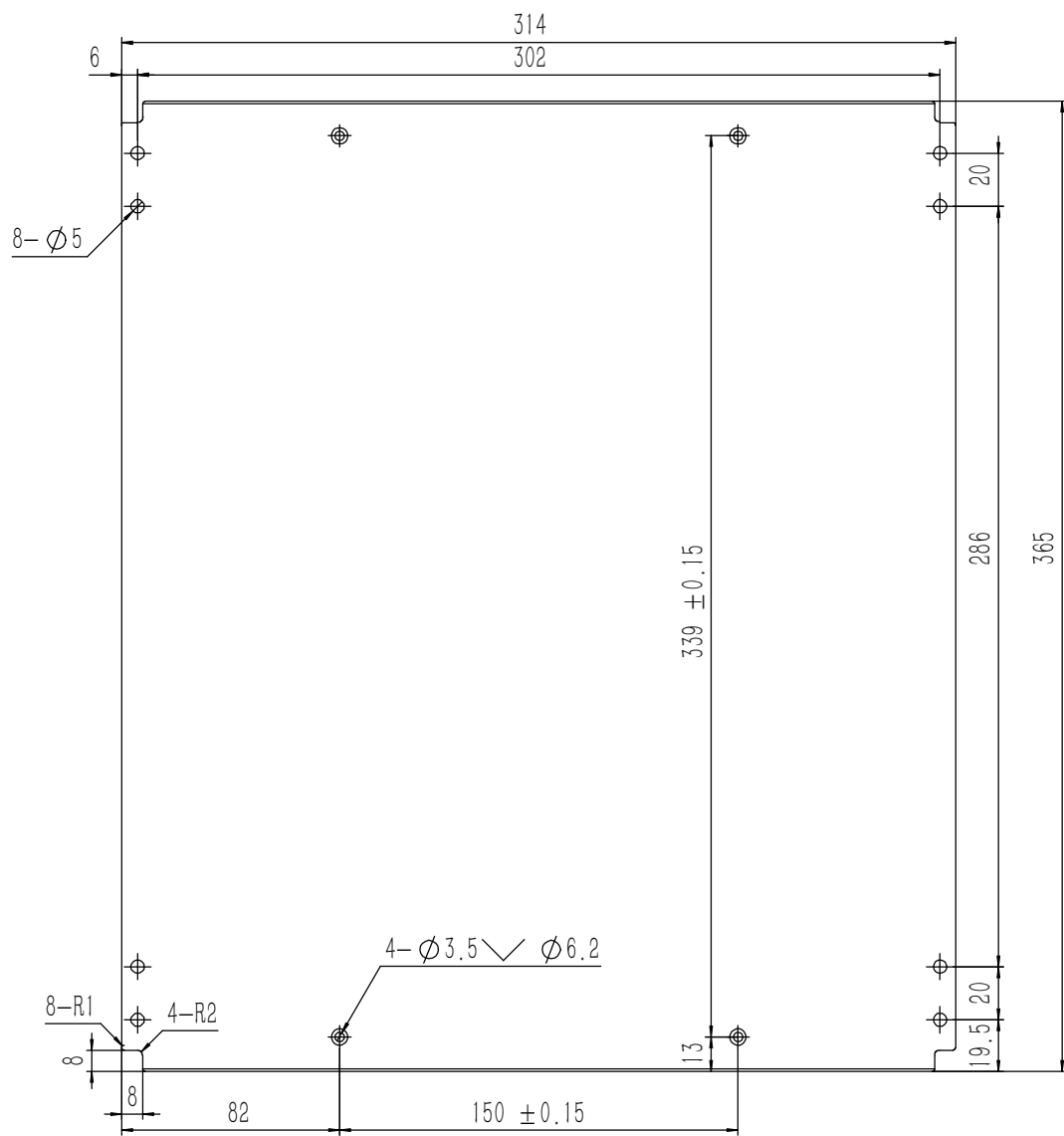


业务代码:

技术要求:

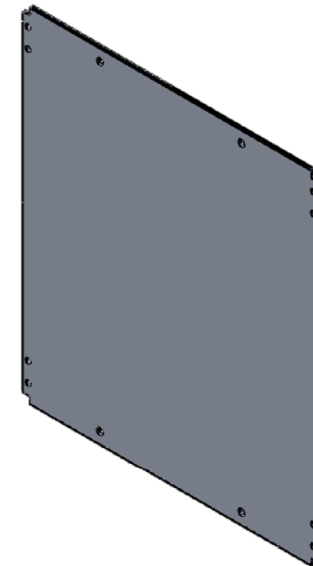
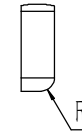
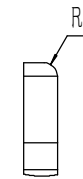
- 1、零件加工表面不应有划痕、擦伤等损伤零件表面的缺陷;
- 2、去除毛刺飞边, 锐角倒钝;
- 3、未标注尺寸见3D数模。

Tolerances (未注公差): 0.5 to 6 ± 0.1 6 to 30 ± 0.2 30 to 120 ± 0.3 120 to 400 ± 0.4	Material (材料): (装配图) Weight: (重量) (Kg): 0.058 Protection: (表面处理): 毛坯 Part Name (零/部件名称):	YONGU 永固		Drawing Number (图号):	
				YG-TY-A11-002	
Break sharp edges (未注锐边倒角): Ch 0.05 to 0.25 x45° Position tolerances (未注位置公差): ±0.05	Angular tolerances (未注角度公差): <6° ± 10' <30° ± 20' <120° ± 30' >120° ± 1°	面板下固定件2		Size: (图幅): A2	Sheet (页数):
		Drawn by (绘图): 许宏彬	Date (日期): 2020.09.18	Scale (比例): 1:1	1 / 1
Signature by (批准):		Date (日期):	Revision (版本): A1		



A
5 : 1

B
5 : 1



技术要求:

- 1、零件加工表面不应有划痕、擦伤等损伤零件表面的缺陷;
- 2、去除毛刺飞边, 锐角倒钝;
- 3、未标注尺寸见3D数模。

Tolerances (未注公差):	
0.5 to 6	± 0.1
6 to 30	± 0.2
30 to 120	± 0.3
120 to 400	± 0.4

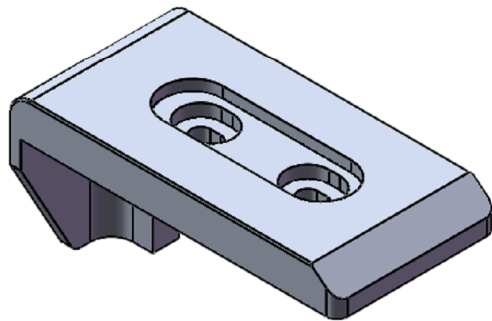
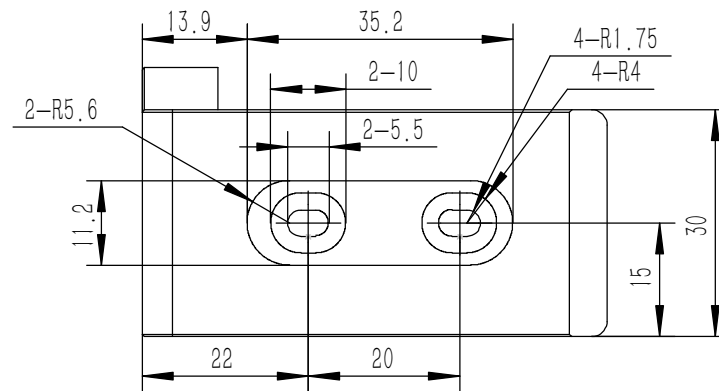
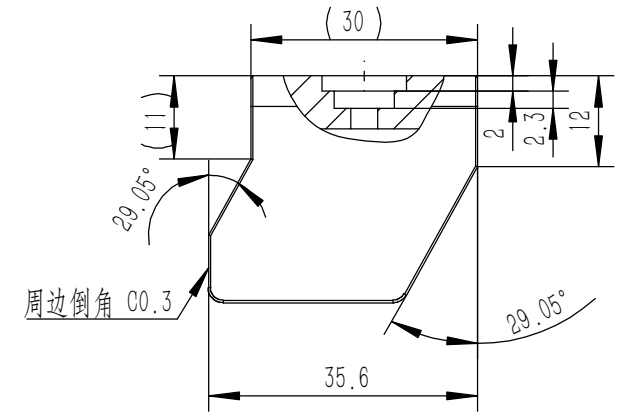
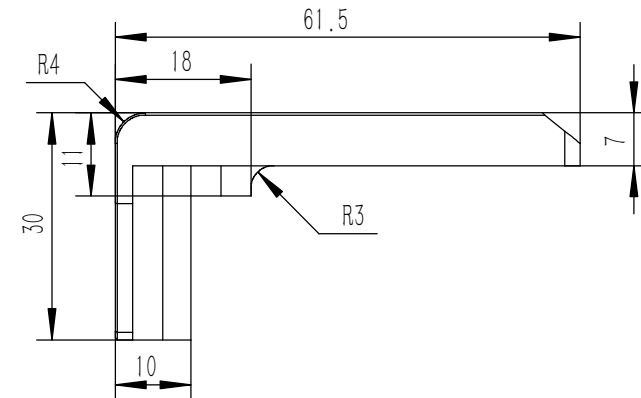
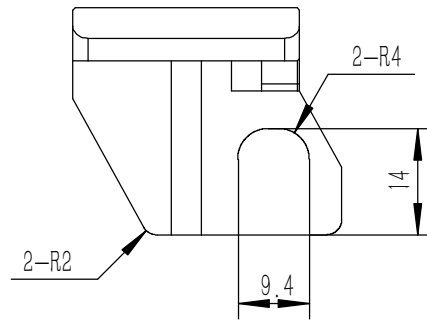
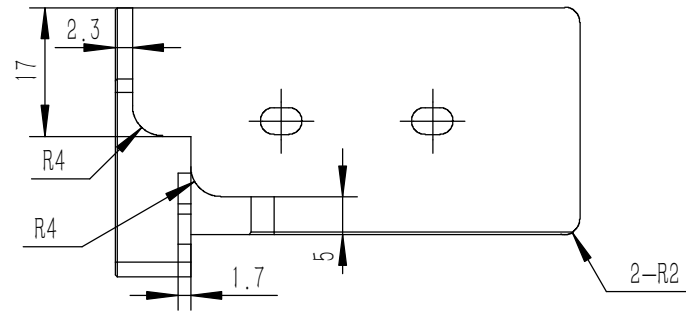
Break sharp edges (未注锐边倒角): Ch 0.05 to 0.25 x45°	Angular tolerances (未注角度公差):
	<6° ± 10'
	<30° ± 20'
	<120° ± 30'
	>120° ± 1°

Material (材料):	5052-H32
Weight: (重量) (Kg):	0.764
Protection: (表面处理):	
Part Name (零/部件名称):	上下盖板

YONGU 永固

Drawn by (绘图): 莫永康	Date (日期): 2020.05.18	Size: (图幅): A1	
Check by (校对):	Date (日期):	Scale (比例): 1:1	
Signature by (批准):	Date (日期):	Revision (版本): A1	Sheet (页数): 1 / 1

Drawing Number (图号):
YG-TY-A01-007

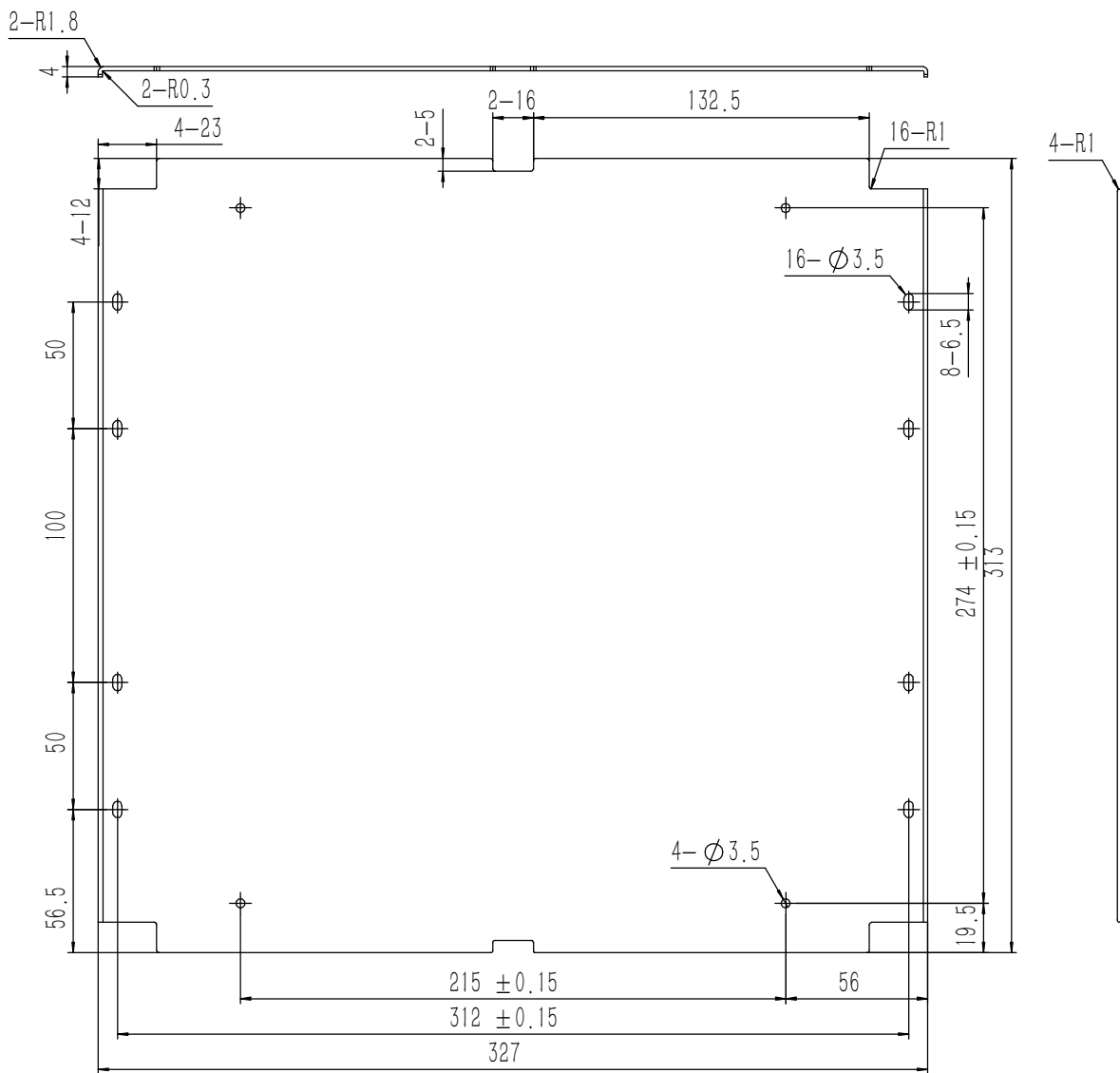
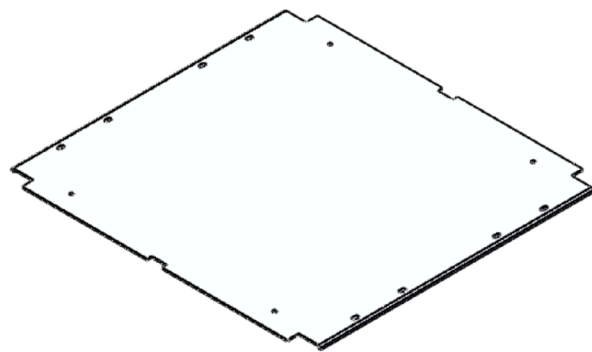
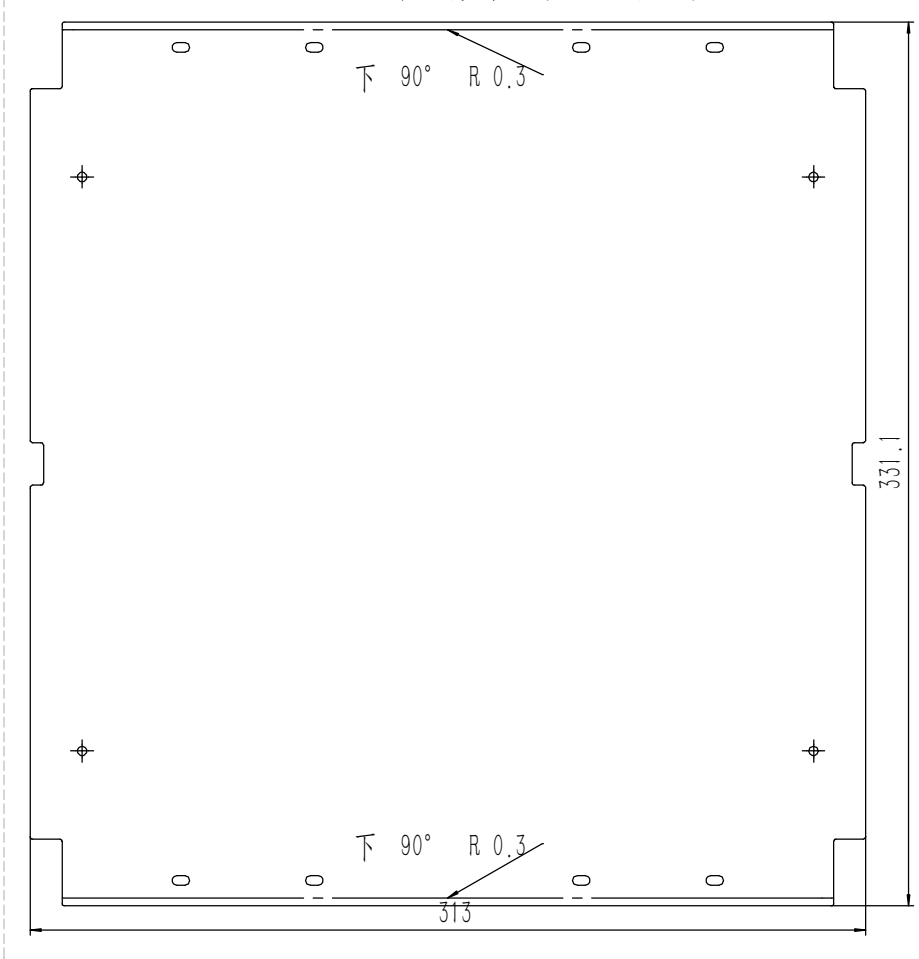


技术要求:
 1、零件加工表面不应有划痕、擦伤等损伤零件表面的缺陷;
 2、去除毛刺飞边,锐角倒钝;
 3、未标注尺寸见3D数模。

Tolerances (未注公差): 0.5 to 6 ± 0.1 6 to 30 ± 0.2 30 to 120 ± 0.3 120 to 400 ± 0.4	Material (材料):	6063-T5	
	Weight: (重量) (Kg)	0.043	
Break sharp edges (未注锐边倒角): Ch 0.05 to 0.25 x45° Position tolerances (未注位置公差): ±0.05	Protection: (表面处理):		
	Part Name (零/部件名称):	A包角2	
Angular tolerances (未注角度公差): <6° ± 10' <30° ± 20' <120° ± 30' >120° ± 1°	Part Name (零/部件名称):	A包角2	
	Drawing Number (图号):	YG-TY-A05-002	
Drawn by (绘图):	Date (日期):	2020.05.18	Size: (图幅): A4
Check by (校对):	Date (日期):		Scale (比例): 1:1
Signature by (批准):	Date (日期):		Revision (版本): A1
			Sheet (页数): 1 / 1

YONGU 永固

钣金展开及折弯方向参考图 (视图比例1:1)



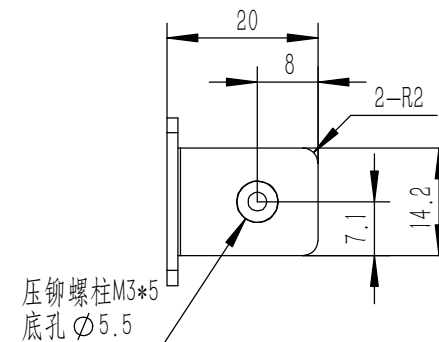
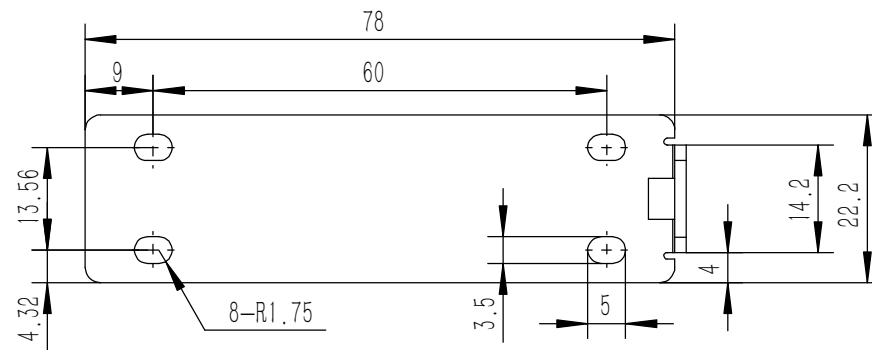
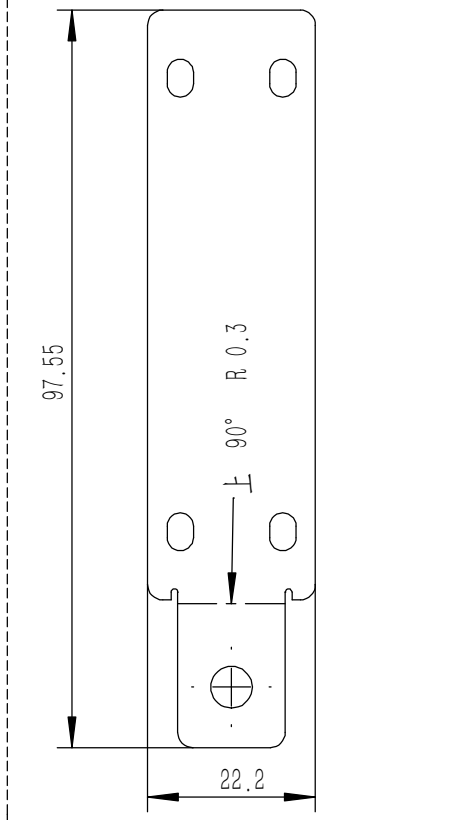
业务代码:

技术要求:

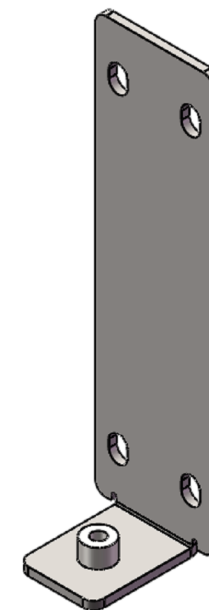
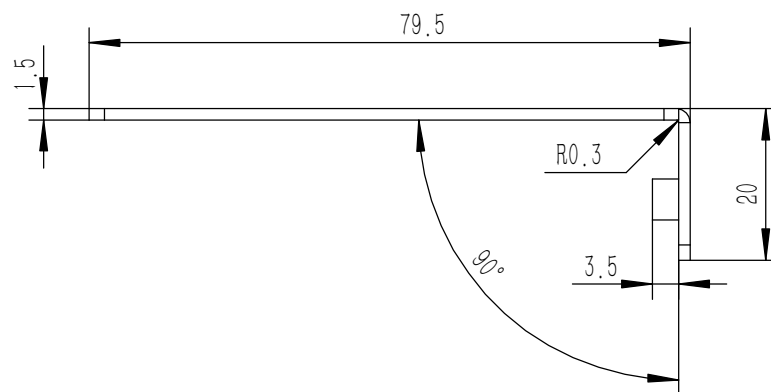
- 1、零件加工表面不应有划痕、擦伤等损伤零件表面的缺陷;
- 2、去除毛刺飞边,锐角倒钝;
- 3、未标注尺寸见3D数模。

Tolerances (未注公差): 0.5 to 6 ± 0.1 6 to 30 ± 0.2 30 to 120 ± 0.3 120 to 400 ± 0.4	Material (材料):	5052-H32		YONGU 永固
	Weight: (重量) (Kg):	0.410		
Break sharp edges (未注锐边倒角): Ch 0.05 to 0.25 x45°	Protection: (表面处理):			Drawing Number (图号): YG-TY-A13-007
	Part Name (零/部件名称):	A垫板		
Position tolerances (未注位置公差): ±0.05	Angular tolerances (未注角度公差): <6° ± 10' <30° ± 20' <120° ± 30' >120° ± 1°	Drawn by (绘图): 许宏彬	Date (日期): 2020.09.17	Size: (图幅): A1
		Check by (校对):	Date (日期):	Scale (比例): 1:1
		Signature by (批准):	Date (日期):	Revision (版本): A1
				Sheet (页数): 1 / 1

钣金展开及折弯方向参考图(视图比例1:1)



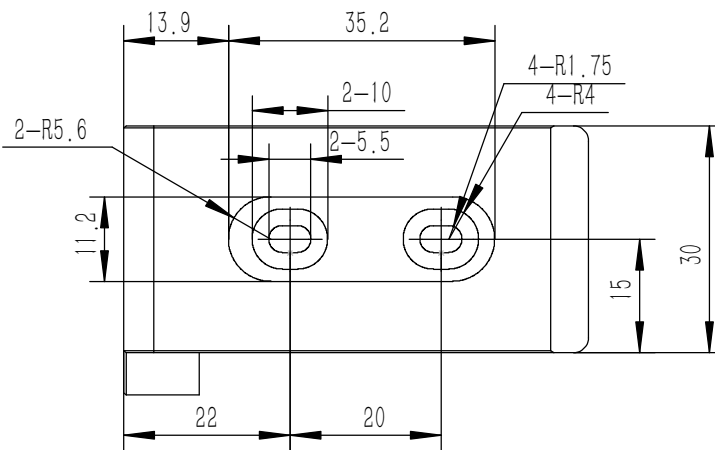
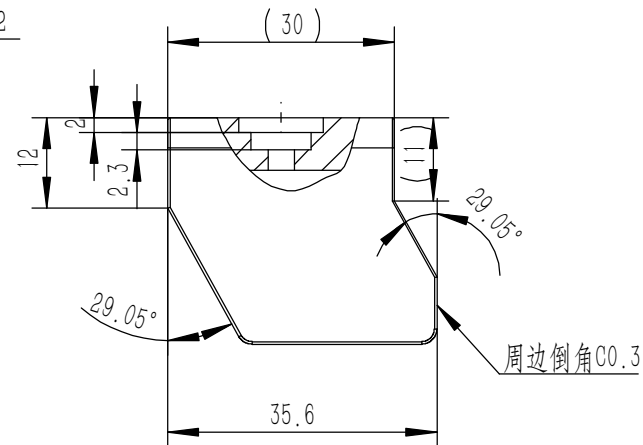
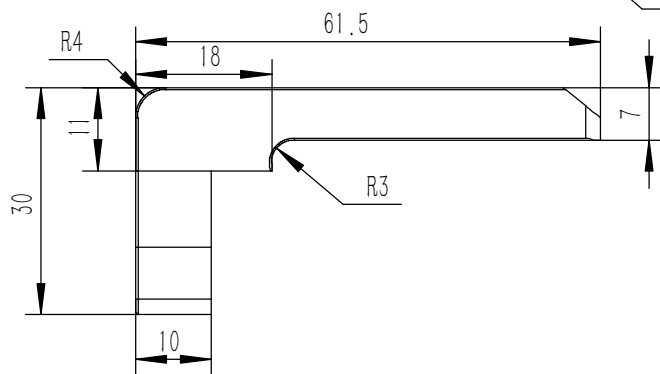
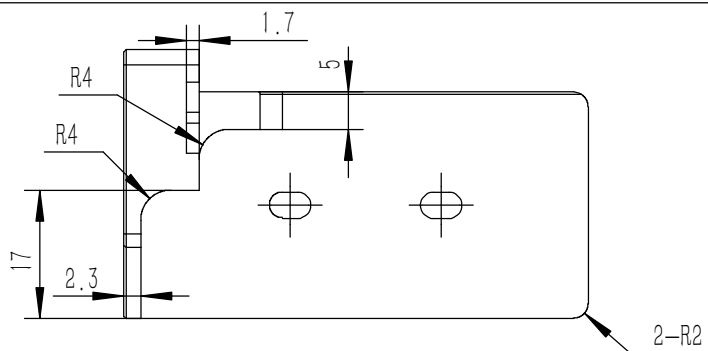
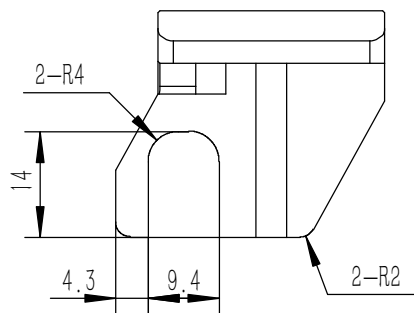
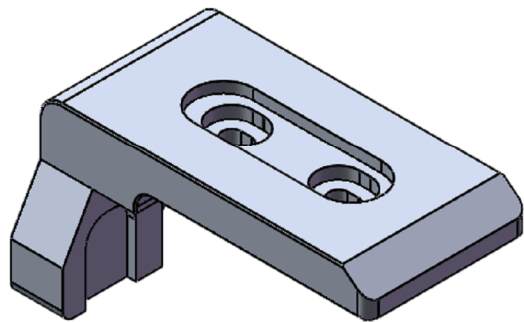
压铆螺柱M3*5
底孔 \varnothing 5.5



技术要求:

- 1、零件加工表面不应有划痕、擦伤等损伤零件表面的缺陷;
- 2、去除毛刺飞边, 锐角倒钝;
- 3、未标注尺寸见3D数模。

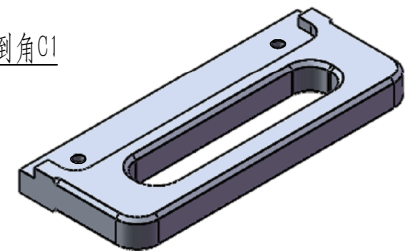
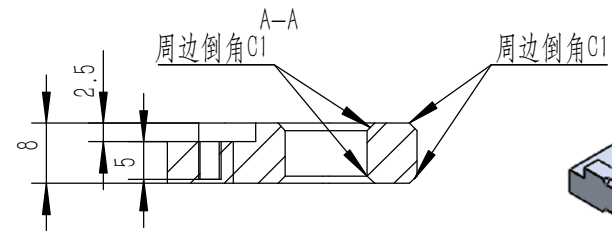
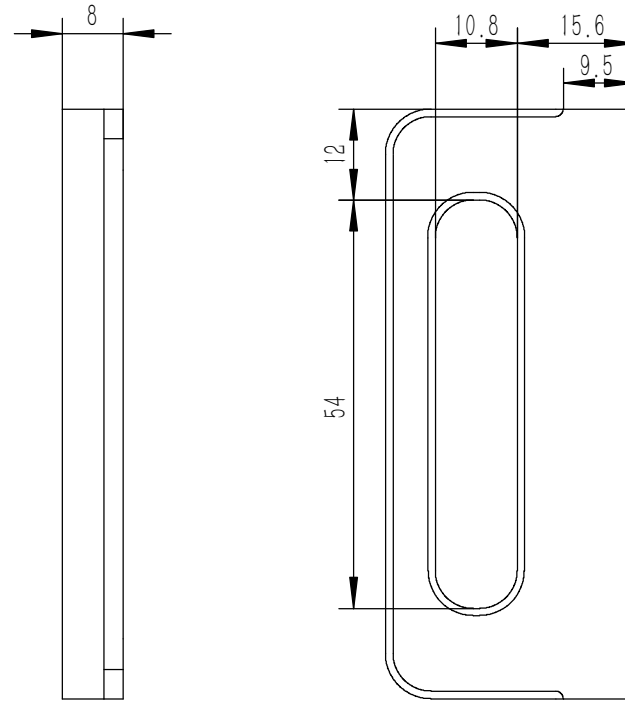
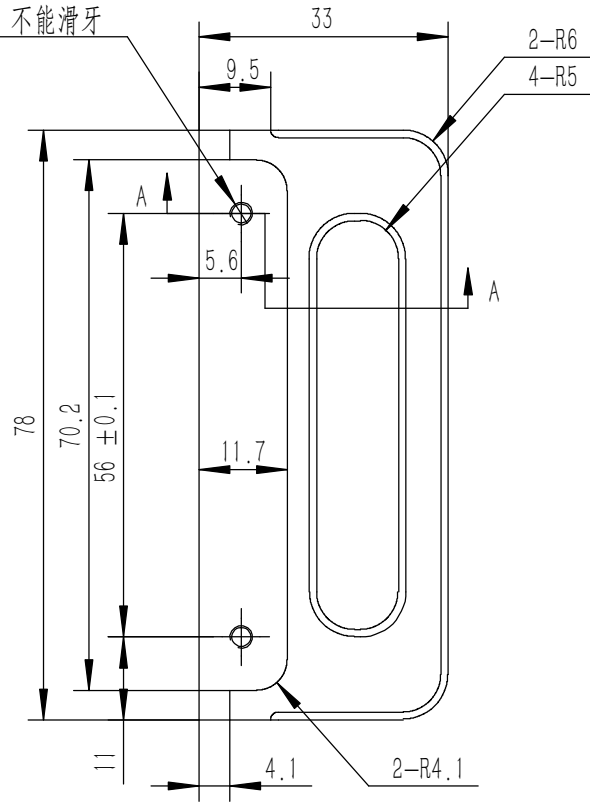
Tolerances (未注公差): 0.5 to 6 ± 0.1 6 to 30 ± 0.2 30 to 120 ± 0.3 120 to 400 ± 0.4	Material (材料): 电解板	YONGU 永固	
	Weight: (重量) (Kg) 0.023		
Break sharp edges (未注锐边倒角): Ch 0.05 to 0.25 x45°	Protection: (表面处理):	Drawing Number (图号): YG-TY-A09-001	
	Position tolerances (未注位置公差): ±0.05	Part Name (零/部件名称): 侧板连接件 2U	Scale (比例): 1:1
Angular tolerances (未注角度公差): <6° ± 10' <30° ± 20' <120° ± 30' >120° ± 1°	Drawn by (绘图): 莫永康	Date (日期): 2020.05.19	Sheet (页数): 1 / 5
	Check by (校对):	Date (日期):	Revision (版本): A1
	Signature by (批准):	Date (日期):	



- 技术要求:
- 1、零件加工表面不应有划痕、擦伤等损伤零件表面的缺陷;
 - 2、去除毛刺飞边, 锐角倒钝;
 - 3、未标注尺寸见3D数模。


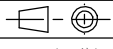
Tolerances (未注公差): 0.5 to 6 ± 0.1 6 to 30 ± 0.2 30 to 120 ± 0.3 120 to 400 ± 0.4	Material (材料): 6063-T5	YONGU 永固	
	Weight: (重量) (Kg) 0.043		
Break sharp edges (未注锐边倒角): Ch 0.05 to 0.25 x45°	Protection: (表面处理):	Part Name (零/部件名称):	
	Position tolerances (未注位置公差): ±0.05	A包角1	
Angular tolerances (未注角度公差): <6° ± 10' <30° ± 20' <120° ± 30' >120° ± 1°	Part Name (零/部件名称):	Drawing Number (图号):	
	Part Name (零/部件名称):	YG-TY-A05-001	
Part Name (零/部件名称):	Drawn by (绘图): 莫永康	Date (日期): 2020.05.18	Size: (图幅): A4
Part Name (零/部件名称):	Check by (校对):	Date (日期):	Scale (比例): 1:1
Part Name (零/部件名称):	Signature by (批准):	Date (日期):	Revision (版本): A1
Part Name (零/部件名称):	Part Name (零/部件名称):	Part Name (零/部件名称):	Sheet (页数): 1 / 1

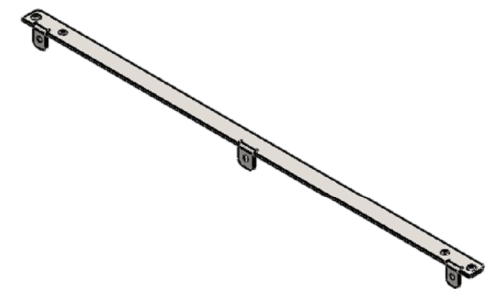
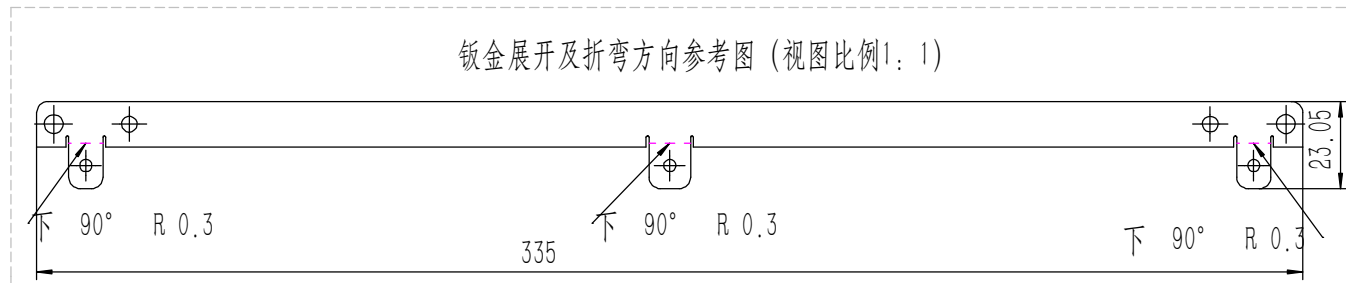
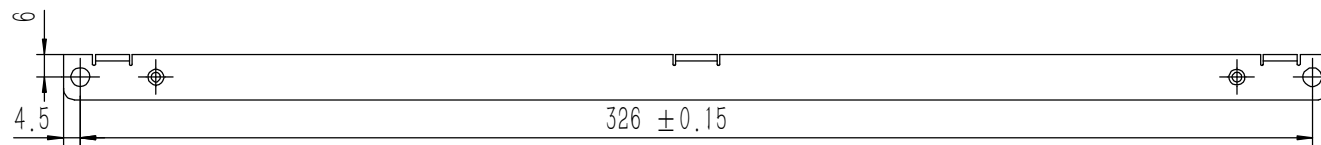
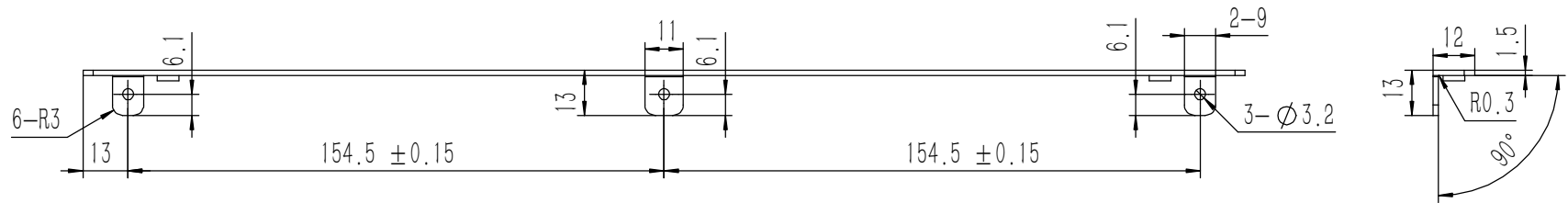
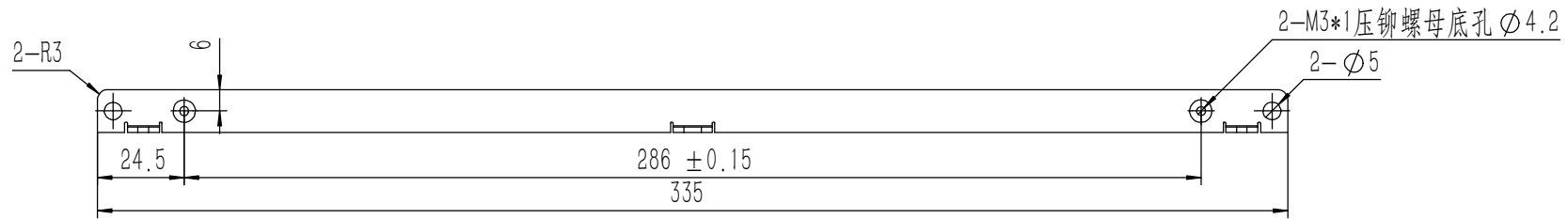
2-M3 ∇ 5不能钻穿，不能滑牙



技术要求:

- 1、零件加工表面不应有划痕、擦伤等损伤零件表面的缺陷;
- 2、去除毛刺飞边，锐角倒钝;
- 3、未标注尺寸见3D数模。

Tolerances (未注公差): 0.5 to 6 ± 0.1 6 to 30 ± 0.2 30 to 120 ± 0.3 120 to 400 ± 0.4	Material (材料):	5052-H32		YONGU 
	Weight: (重量) (Kg)	0.036		
Break sharp edges (未注锐边倒角): Ch 0.05 to 0.25 x45°	Protection: (表面处理):			Drawing Number (图号): YG-TY-A07-001
	Position tolerances (未注位置公差): ±0.05	Part Name (零/部件名称):	后防护条-2U	
Angular tolerances (未注角度公差): <6° ± 10' <30° ± 20' <120° ± 30' >120° ± 1°	Drawn by (绘图):	邓展锋	Date (日期):	2020.05.16
	Check by (校对):		Date (日期):	
	Signature by (批准):		Date (日期):	
		Size: (图幅):	A4	
		Scale (比例):	1:1	Sheet (页数):
		Revision (版本):	A1	1 / 1



业务代码:

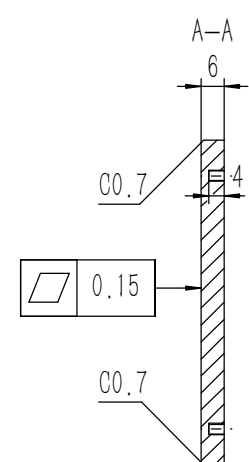
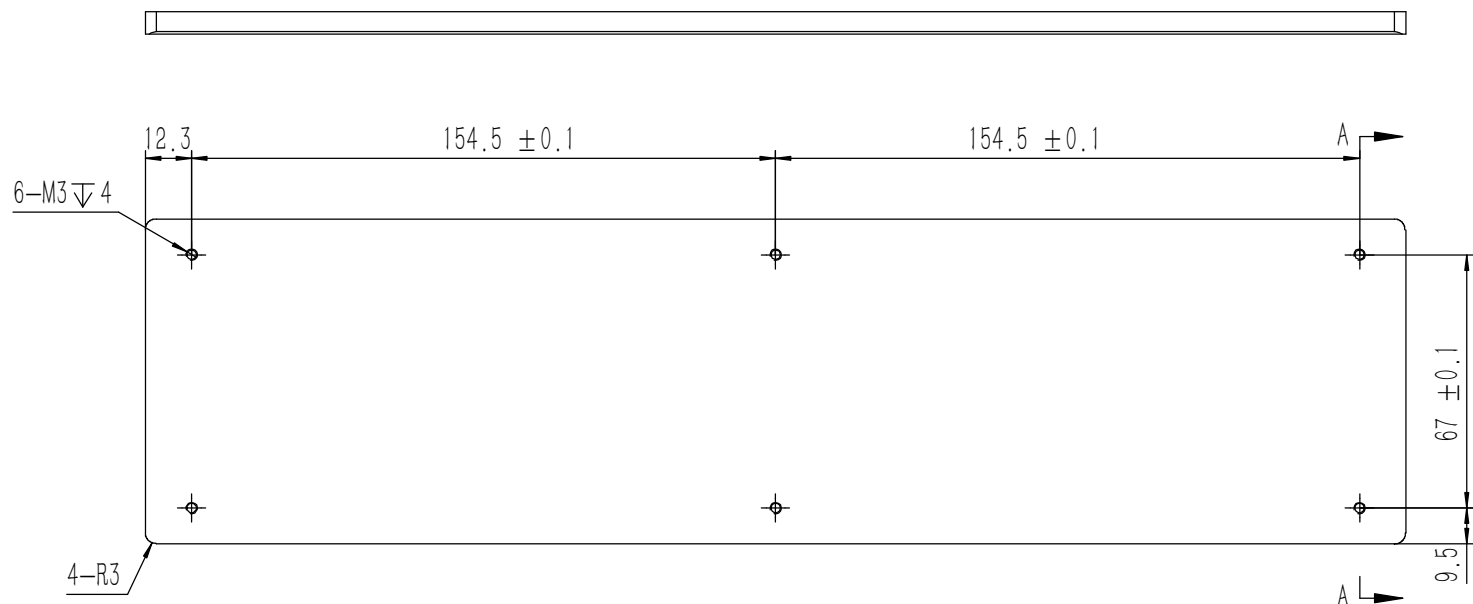
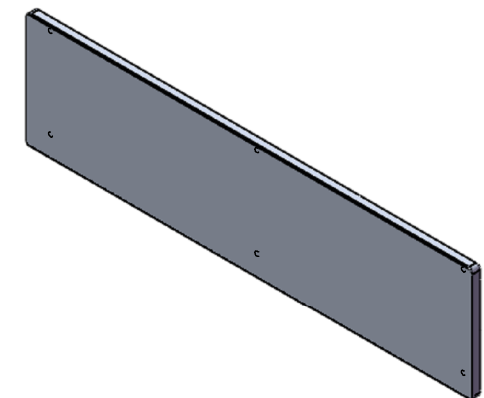
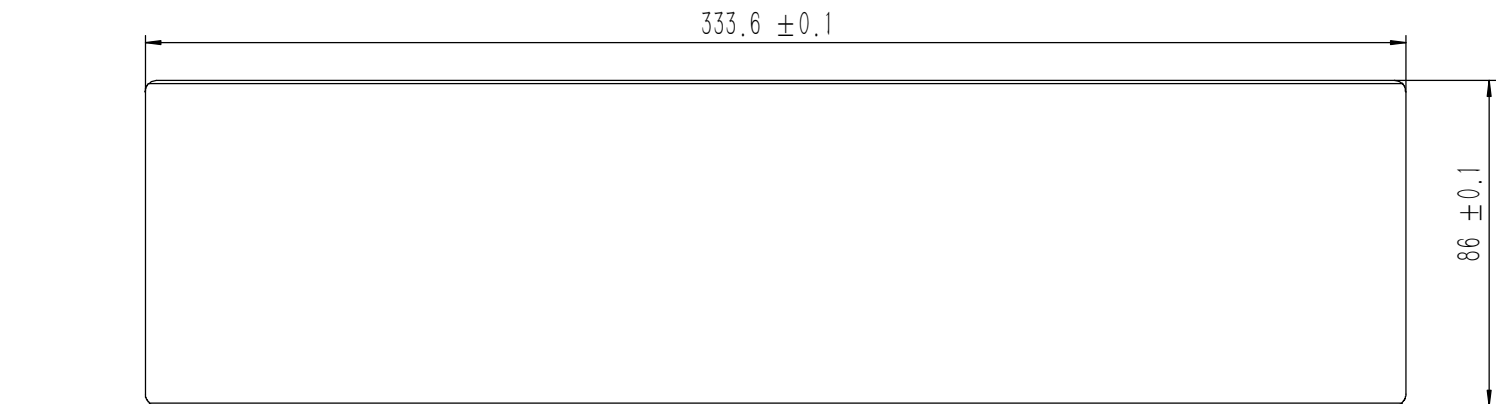
技术要求:

- 1、零件加工表面不应有划痕、擦伤等损伤零件表面的缺陷;
- 2、去除毛刺飞边,锐角倒钝;
- 3、未标注尺寸见3D数模。

Tolerances (未注公差): 0.5 to 6 ± 0.1 6 to 30 ± 0.2 30 to 120 ± 0.3 120 to 400 ± 0.4	Material (材料):	电解板	
	Weight: (重量) (Kg):	0.050	
Break sharp edges (未注锐边倒角): Ch 0.05 to 0.25 x45°	Protection: (表面处理):	毛坯	
	Position tolerances (未注位置公差): ±0.05	Part Name (零/部件名称):	面板上固定件2
Angular tolerances (未注角度公差): <6° ± 10' <30° ± 20' <120° ± 30' >120° ± 1°	Drawn by (绘图):	许宏彬	Date (日期): 2020.09.18
		Check by (校对):	Date (日期):
	Signature by (批准):	Date (日期):	Size: (图幅): A2
			Scale (比例): 1:1
			Revision (版本): A1
			Sheet (页数): 1 / 1

YONGU 永固

Drawing Number (图号):
YG-TY-A10-002



- 技术要求:
- 1、零件加工表面不应有划痕、擦伤等损伤零件表面的缺陷;
 - 2、去除毛刺飞边, 锐角倒钝;
 - 3、未标注尺寸见3D数模。

Tolerances (未注公差): 0.5 to 6 ± 0.1 6 to 30 ± 0.2 30 to 120 ± 0.3 120 to 400 ± 0.4	Material (材料):	5052-H32	
	Weight: (重量) (Kg):	0.460	
Break sharp edges (未注锐边倒角): Ch 0.05 to 0.25 x45°	Protection: (表面处理):		
	Position tolerances (未注位置公差): ±0.05	Part Name (零/部件名称):	前后面板-2U
Angular tolerances (未注角度公差): <6° ± 10' <30° ± 20' <120° ± 30' >120° ± 1°	Drawn by (绘图):	莫永康	Date (日期): 2020.05.18
		Check by (校对):	Date (日期):
	Signature by (批准):	Date (日期):	Size: (图幅): A2
			Scale (比例): 1:1
			Revision (版本): A1
			Sheet (页数): 1 / 1

YONGU 永固

Drawing Number (图号): YG-TY-A12-005