

|    |                          |                  |          |    |        |    |
|----|--------------------------|------------------|----------|----|--------|----|
| 22 | DIN-9250-S-NL-M3         | 不锈钢防松垫圈          | SUS 304  | 8  | 0.000  |    |
| 21 | YG-TY-XJD-001            | 自粘胶垫35X11X3      | 硅橡胶      | 8  | 0.0013 |    |
| 20 | GB-T-70.3-2000-C-NI-M3X6 | 芳生镀白镍内六角沉头螺丝M3X6 | 普通碳钢     | 8  | 0.0004 |    |
| 19 | YG-TY-A12-005            | 前后面板-2U          | 5052-H32 | 2  | 0.460  |    |
| 18 | YG-TY-A10-002            | 面板上固定件2          | 电解板      | 2  | 0.049  |    |
| 17 | YG-TY-A07-001            | 后防护条-2U          | 5052-H32 | 2  | 0.036  |    |
| 16 | YG-TY-B05-001            | B包角1             | 6063-T5  | 4  | 0.035  |    |
| 15 | YG-TY-A09-001            | 侧板连接件 2U         | 电解板      | 4  | 0.022  |    |
| 14 | BS0-M3-5-ZI-D5.4         | 压铆螺柱 M3X5        | 普通碳钢     | 6  | 0.001  |    |
| 13 | YG-TY-A13-006            | A垫板              | 5052-H32 | 1  | 0.344  |    |
| 12 | YG-TY-B04-001            | B组合侧板            | 6063-T5  | 2  | 0.066  |    |
| 11 | YG-TY-B05-002            | B包角2             | 6063-T5  | 4  | 0.035  |    |
| 10 | GB-T-973-1976-C-NI-M3X12 | 碳钢镀镍十字大扁头螺丝M3X12 | 普通碳钢     | 16 | 0.001  |    |
| 9  | YG-TY-B01-006            | 上下盖板             | 5052-H32 | 1  | 0.617  |    |
| 8  | YG-TY-A11-002            | 面板下固定件2          | 电解板      | 2  | 0.056  |    |
| 7  | YG-TY-A06-001            | 拉手-2U            | 6063-T5  | 2  | 0.070  |    |
| 6  | S-M3-1-ZI                | 压铆螺母镀白锌M3X1      | 普通碳钢     | 8  | 0.3750 |    |
| 5  | YG-TY-B02-006            | 上盖板              | 5052-H32 | 1  | 0.589  |    |
| 4  | YG-TY-A08-001            | 侧板固定件-2U         | 6063-T5  | 4  | 0.029  |    |
| 3  | YG-TY-B03-001            | B组合侧板            | 6063-T5  | 4  | 0.119  |    |
| 2  | GB-T-973-1976-C-NI-M3X4  | 碳钢镀镍十字大扁头螺丝M3X4  | 普通碳钢     | 34 | 0.0005 |    |
| 1  | GB-T-973-1976-C-NI-M3X6  | 碳钢镀镍十字大扁头螺丝M3X6  | 普通碳钢     | 16 | 0.0006 |    |
| 序号 | 图号                       | 名称               | 材料       | 数量 | 单重     | 备注 |

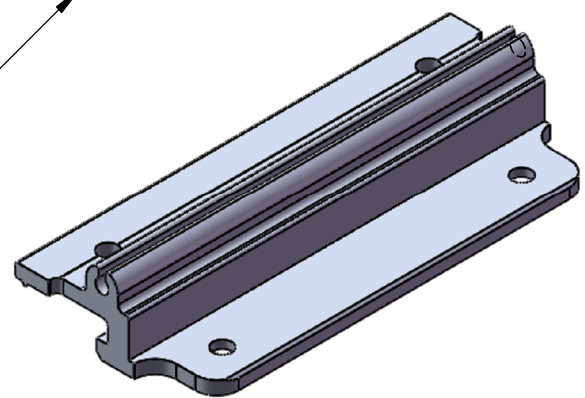
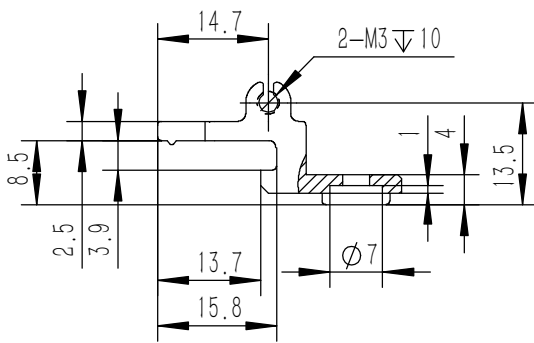
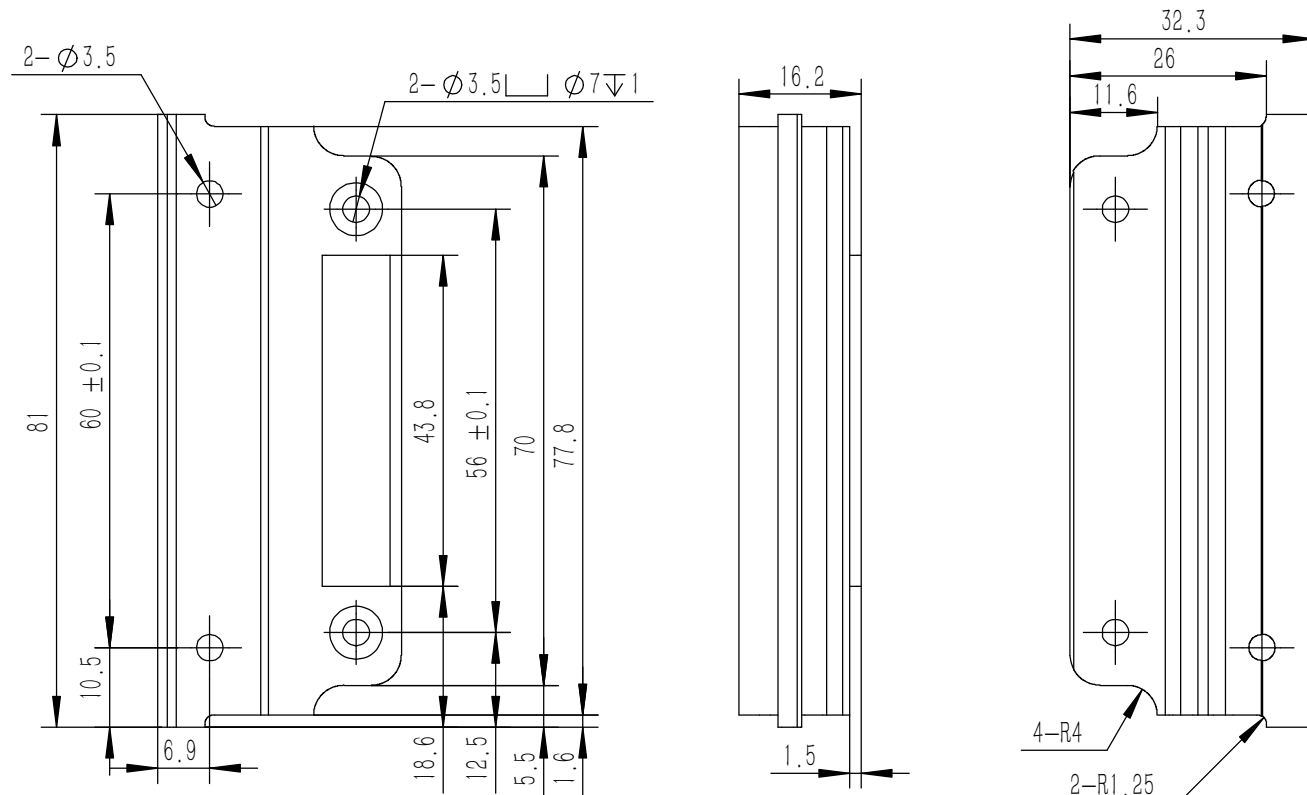
#### 技术要求:

- 1、必须按照设计、工艺要求及本规定和有关标准进行装配;
- 2、所有零部件(包括外购、外协件)必须具有检验合格证方能进行装配;
- 3、零件在装配前必须清理和清洗干净,不得有毛刺、飞边、氧化皮、锈蚀、切屑、砂粒、灰尘和油污等,并应符合相应清洁度要求;
- 4、装配过程中零件不得磕碰、划伤和锈蚀;
- 5、油漆未干的零件不得进行装配;
- 6、相对运动的零件,装配时接触面间应加润滑油脂;
- 7、各零、部件装配后相对位置应准确。

|  |   |
|--|---|
| Break sharp edges<br>(未注锐边倒角):<br>Ch 0.05 to 0.25 x45° | Angular tolerances<br>(未注角度公差):<br><6° ± 10'<br><30° ± 20'<br><120° ± 30'<br>>120° ± 1° |
| Position tolerances<br>(未注位置公差):<br>± 0.05             |   |

|   |                           |                                      |
|---|---------------------------|--------------------------------------|
| Tolerances<br>(未注公差):<br>0.5 to 6 ± 0.1<br>6 to 30 ± 0.2<br>30 to 120 ± 0.3<br>120 to 400 ± 0.4 | Material (材料): (装配图)      | <b>YONGU</b> 永固                      |
|   | Weight: (重量) (Kg): 4.051  |                                      |
|   | Protection: (表面处理):       |                                      |
|   | Part Name (零/部件名称): B05机箱 | Drawing Number (图号): YG-B05-1000-000 |
|   | Drawn by (绘图): 邓展锋        | Date (日期): 2020.05.22                |
|   | Check by (校对):            | Date (日期):                           |
|   | Signature by (批准):        | Date (日期):                           |
|   | Size (图幅): A0             | Scale (比例): 1:1.2                    |
|   | Sheet (页数): 1 / 1         | Revision (版本): A1                    |

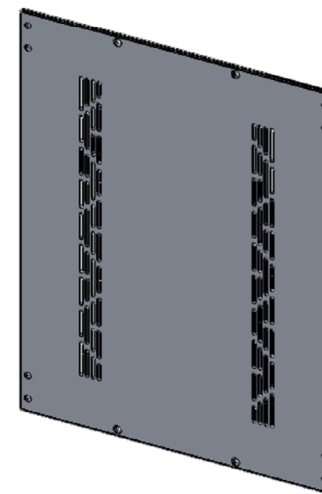
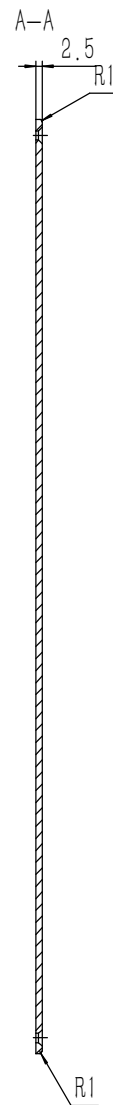
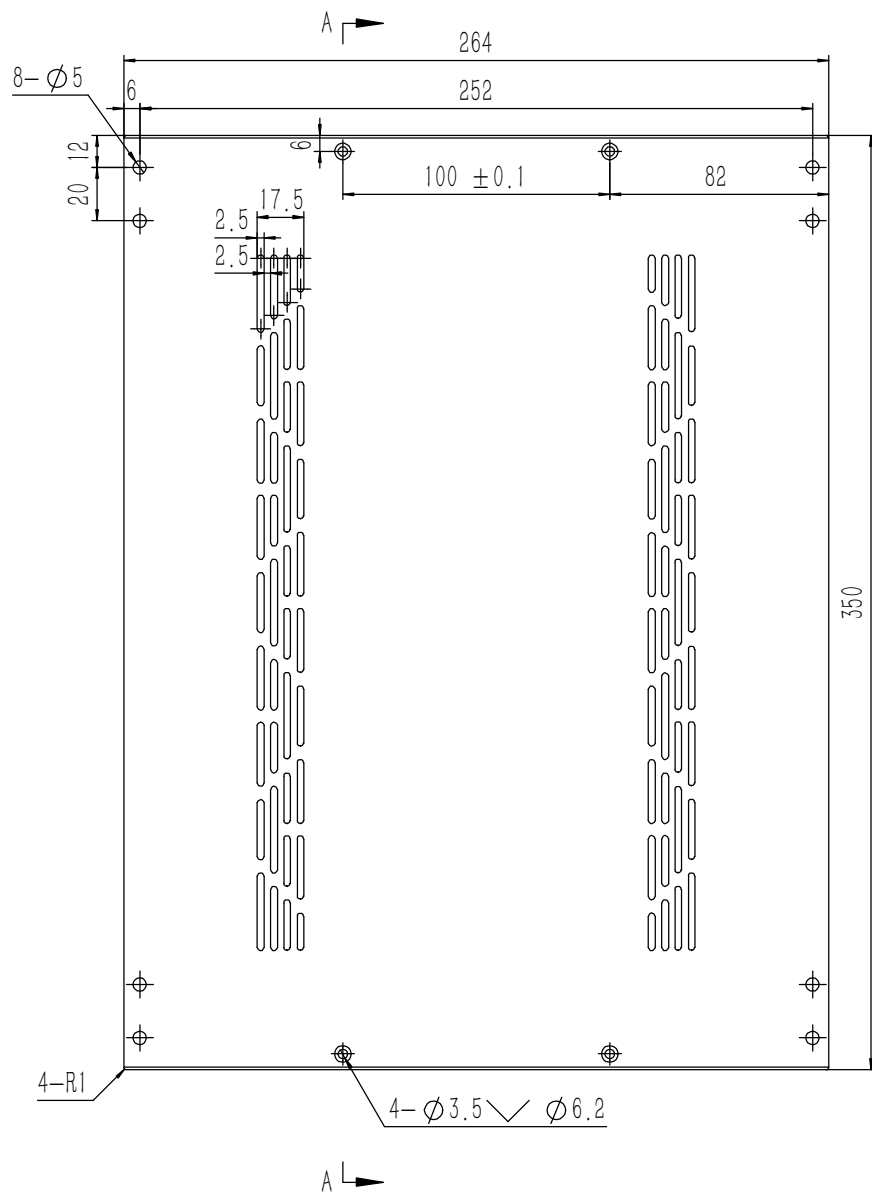




技术要求:  
 1、零件加工表面不应有划痕、擦伤等损伤零件表面的缺陷;  
 2、去除毛刺飞边, 锐角倒钝;  
 3、未标注尺寸见3D数模。

|   |  |                     |                                       |
|---|--|---------------------|---------------------------------------|
| Tolerances<br>(未注公差):<br>0.5 to 6 ± 0.1<br>6 to 30 ± 0.2<br>30 to 120 ± 0.3<br>120 to 400 ± 0.4 | Material (材料):                             | 6063-T5             |                                       |
|   | Weight: (重量) (Kg)                          | 0.029               |                                       |
| Break sharp edges<br>(未注锐边倒角):<br>Ch 0.05 to 0.25 x45°  | Protection: (表面处理):                        |                     |                                       |
|   | Position tolerances<br>(未注位置公差):<br>± 0.05 | Part Name (零/部件名称): | 侧板固定件-2U                              |
| Angular tolerances<br>(未注角度公差):<br><6° ± 10'<br><30° ± 20'<br><120° ± 30'<br>>120° ± 1°         | Drawn by (绘图):                             | 邓展锋                 | Drawing Number (图号):<br>YG-TY-A08-001 |
|   | Check by (校对):                             | Date (日期):          | 2020.05.18                            |
|   | Signature by (批准):                         | Date (日期):          |                                       |
|   |  | Scale (比例):         | 1:1                                   |
|   |  | Revision (版本):      | A1                                    |
|   |  | Sheet (页数):         | 0 / 0                                 |



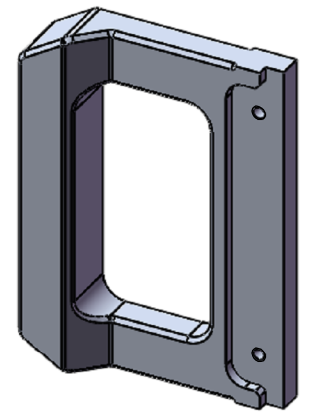
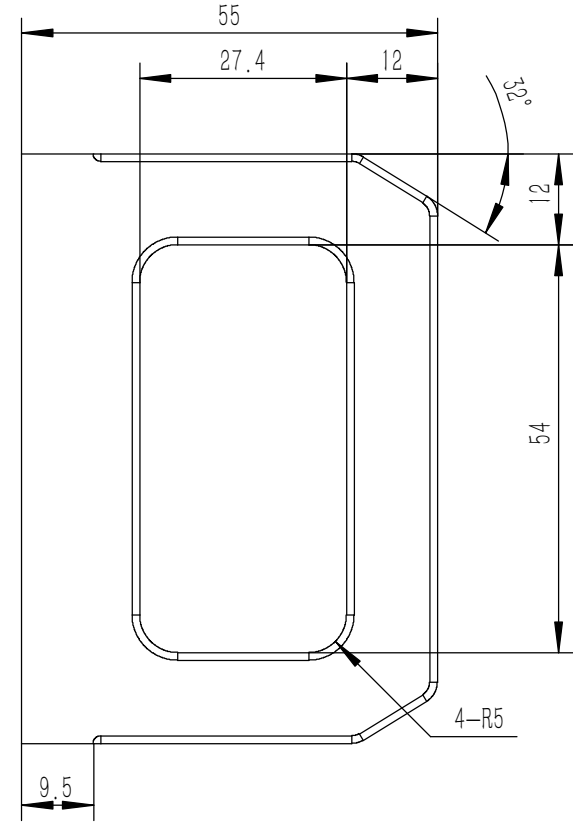
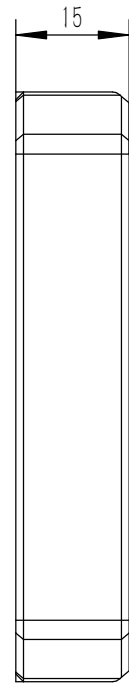
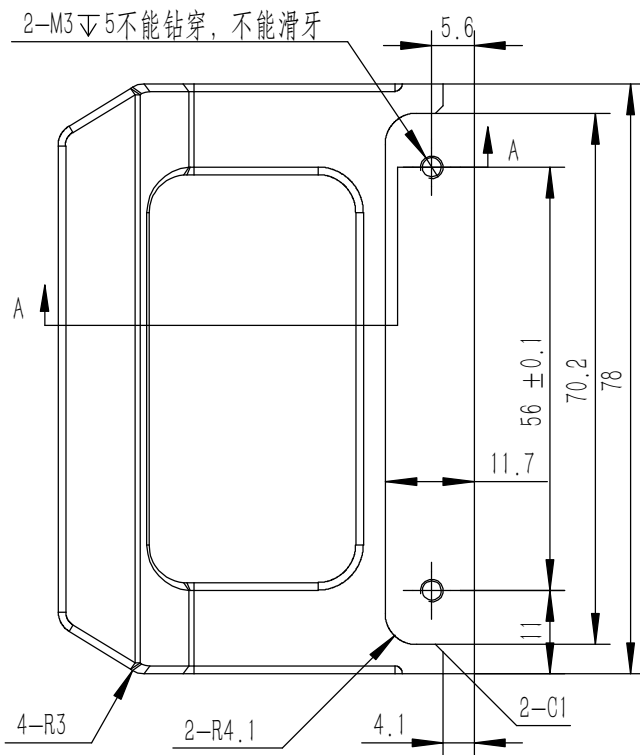
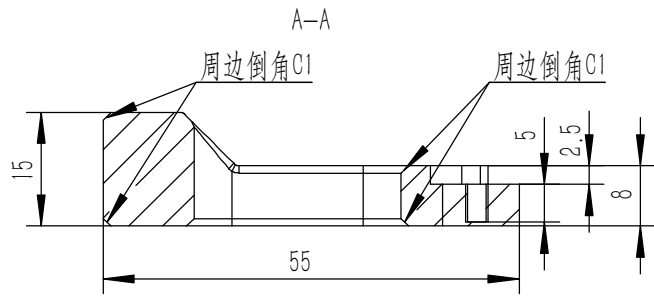


技术要求:

- 1、零件加工表面不应有划痕、擦伤等损伤零件表面的缺陷;
- 2、去除毛刺飞边,锐角倒钝;
- 3、未标注尺寸见3D数模。

|   |   |                     |             |
|---|---|---------------------|-------------|
| Tolerances<br>(未注公差):<br>0.5 to 6 ± 0.1<br>6 to 30 ± 0.2<br>30 to 120 ± 0.3<br>120 to 400 ± 0.4 | Material (材料):                            | 5052-H32            |             |
|   | Weight: (重量) (Kg):                        | 0.589               |             |
| Break sharp edges<br>(未注锐边倒角):<br>Ch 0.05 to 0.25 x45°  | Protection: (表面处理):                       |                     |             |
|   | Position tolerances<br>(未注位置公差):<br>±0.05 | Part Name (零/部件名称): | 上盖板         |
| Angular tolerances<br>(未注角度公差):<br><6° ± 10'<br><30° ± 20'<br><120° ± 30'<br>>120° ± 1°         | Signature by (批准):                        | Date (日期):          | 2020.05.18  |
|   | Check by (校对):                            | Date (日期):          |             |
| Drawing Number (图号):  |   | YG-TY-B02-006       |             |
| Size: (图幅):   |   | A1                  | Sheet (页数): |
| Scale (比例):   |   | 1:1                 | 1 / 1       |
| Revision (版本):  |   | A1                  |             |

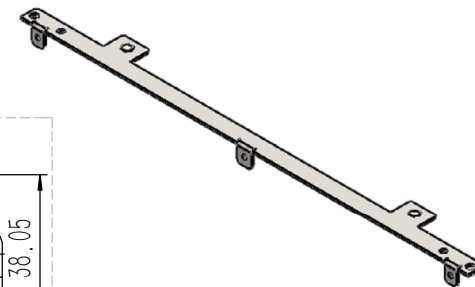
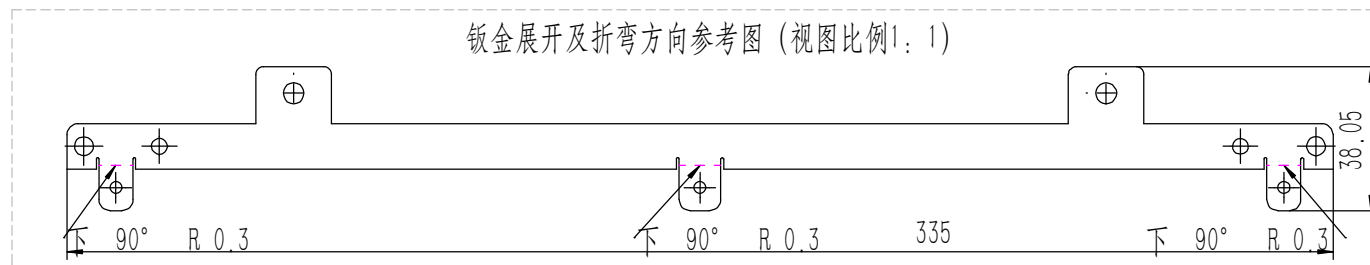
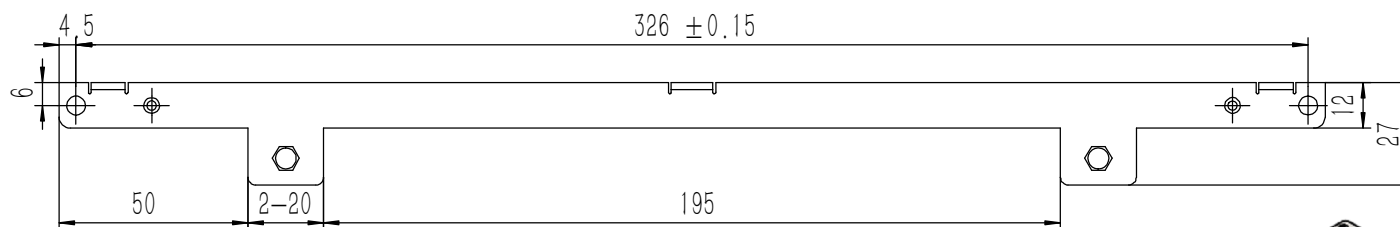
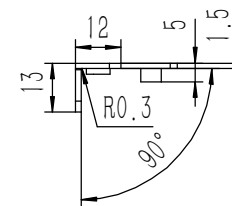
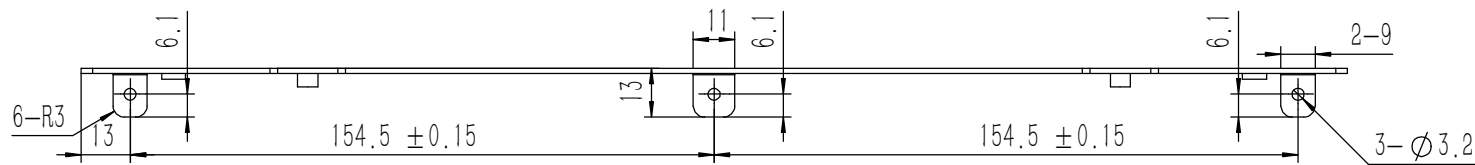
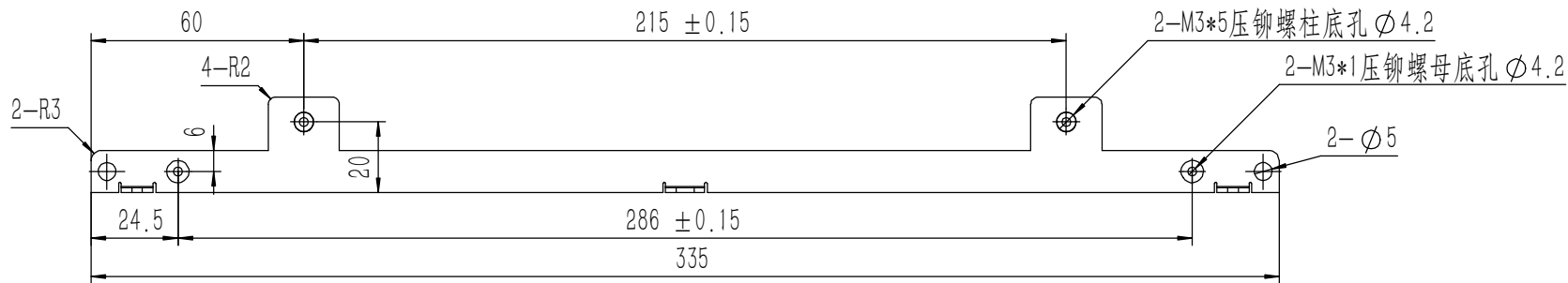
**YONGU** 永固



技术要求:

- 1、零件加工表面不应有划痕、擦伤等损伤零件表面的缺陷;
- 2、去除毛刺飞边, 锐角倒钝;
- 3、未标注尺寸见3D数模。

|   |   |   |                                    |
|---|---|---|------------------------------------|
| Tolerances<br>(未注公差):<br>0.5 to 6 ± 0.1<br>6 to 30 ± 0.2<br>30 to 120 ± 0.3<br>120 to 400 ± 0.4 | Material (材料): 6063-T5                    | <b>YONGU</b> 永固   |                                    |
|   | Weight: (重量) (Kg) 0.070                   |   |                                    |
| Break sharp edges<br>(未注锐边倒角):<br>Ch 0.05 to 0.25 x45°  | Protection: (表面处理):                       | Part Name (零/部件名称): 拉手-2U   |                                    |
|   | Position tolerances<br>(未注位置公差):<br>±0.05 | Angular tolerances<br>(未注角度公差):<br><6° ± 10'<br><30° ± 20'<br><120° ± 30'<br>>120° ± 1° | Drawing Number (图号): YG-TY-A06-001 |
| Drawn by (绘图): 邓展锋  |   | Date (日期): 2020.05.18   | Size: (图幅): A4                     |
| Check by (校对):  |   | Date (日期):  | Scale (比例): 1:1                    |
| Signature by (批准):  |   | Date (日期):  | Revision (版本): A1                  |
|   |   |   | Sheet (页数): 1 / 1                  |

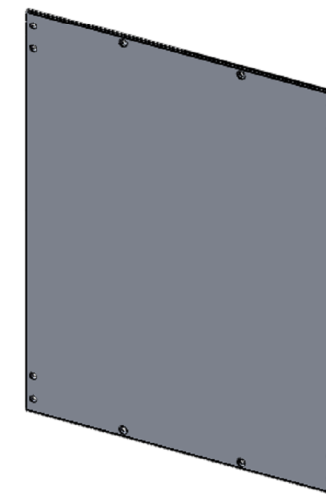
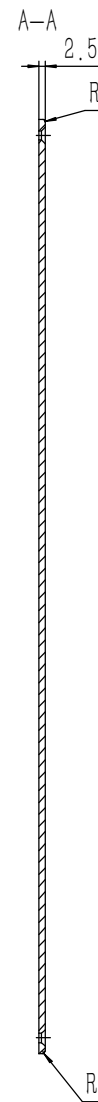
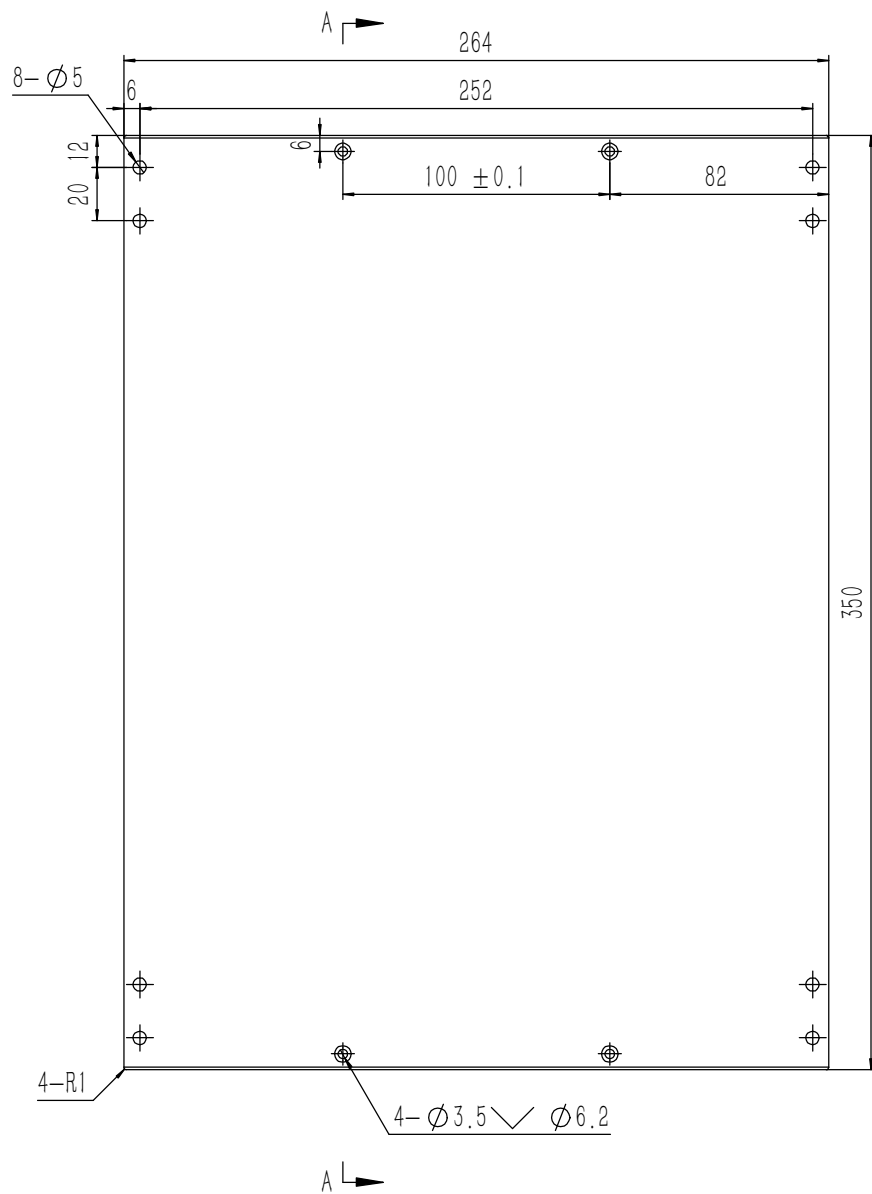


业务代码:

技术要求:

- 1、零件加工表面不应有划痕、擦伤等损伤零件表面的缺陷;
- 2、去除毛刺飞边, 锐角倒钝;
- 3、未标注尺寸见3D数模。

|   |   |                                    |                       |                             |
|---|---|------------------------------------|-----------------------|-----------------------------|
| Tolerances<br>(未注公差):<br>0.5 to 6 ± 0.1<br>6 to 30 ± 0.2<br>30 to 120 ± 0.3<br>120 to 400 ± 0.4     | Material (材料): (装配图)<br>Weight: (重量) (Kg): 0.058<br>Protection: (表面处理): 毛坯              | YONGU 永固                           |                       |                             |
|   |   |                                    |                       | Part Name (零/部件名称): 面板下固定件2 |
| Break sharp edges<br>(未注锐边倒角):<br>Ch 0.05 to 0.25 x45°<br>Position tolerances<br>(未注位置公差):<br>±0.05 | Angular tolerances<br>(未注角度公差):<br><6° ± 10'<br><30° ± 20'<br><120° ± 30'<br>>120° ± 1° | Drawing Number (图号): YG-TY-A11-002 |                       |                             |
|   |   | Drawn by (绘图): 许宏彬                 | Date (日期): 2020.09.18 | Size (图幅): A2               |
| Signature by (批准):  |   | Date (日期):                         | Scale (比例): 1:1       | Revision (版本): A1           |



技术要求:

- 1、零件加工表面不应有划痕、擦伤等损伤零件表面的缺陷;
- 2、去除毛刺飞边,锐角倒钝;
- 3、未标注尺寸见3D数模。

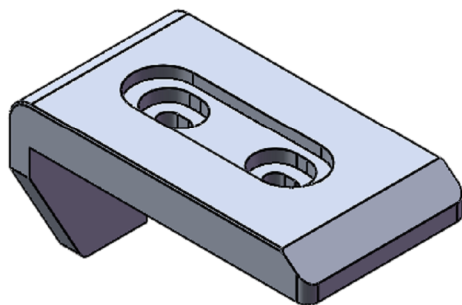
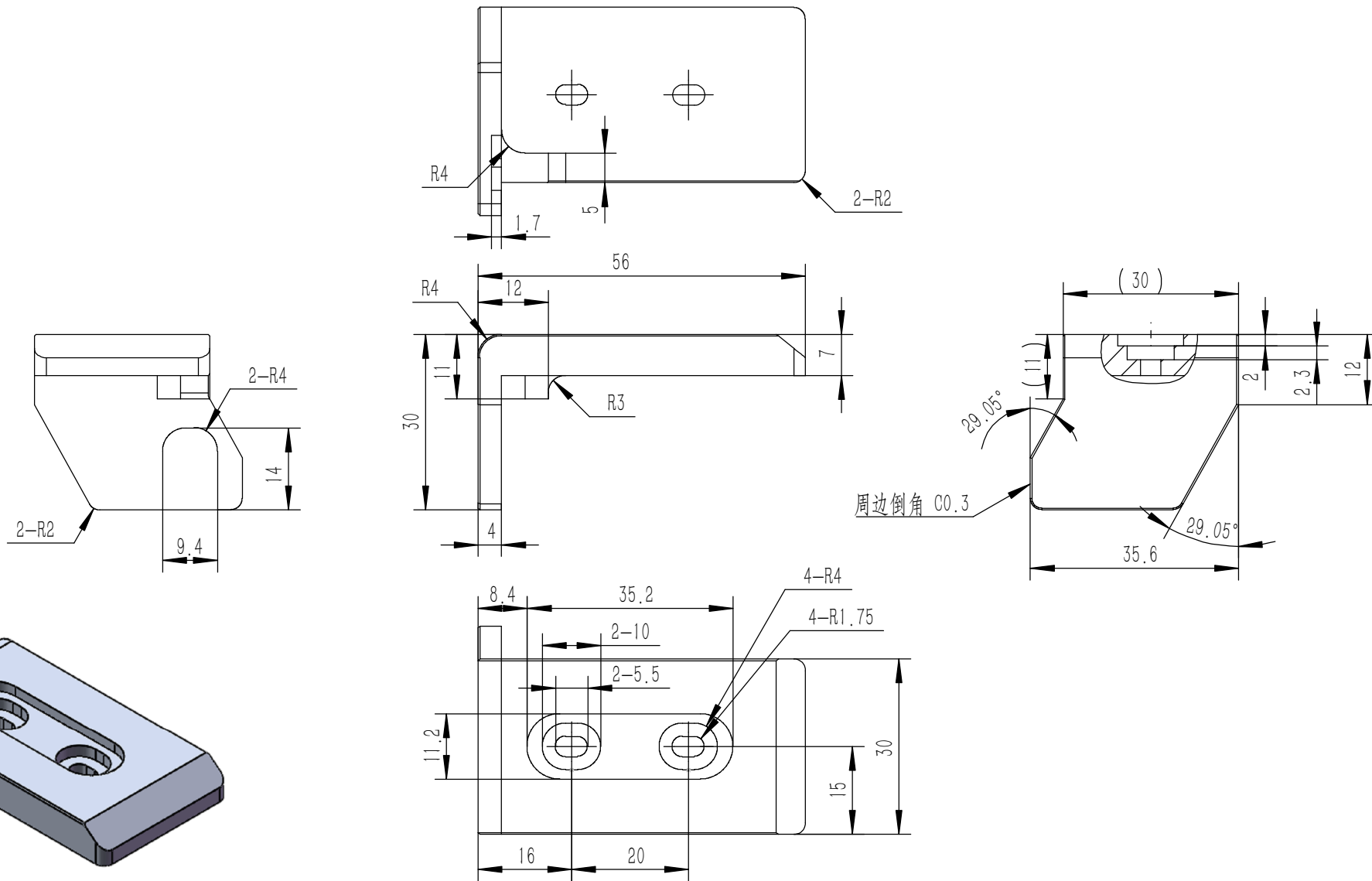
|                       |       |
|-----------------------|-------|
| Tolerances<br>(未注公差): |       |
| 0.5 to 6              | ± 0.1 |
| 6 to 30               | ± 0.2 |
| 30 to 120             | ± 0.3 |
| 120 to 400            | ± 0.4 |

|  |                                 |
|--|---------------------------------|
| Break sharp edges<br>(未注锐边倒角):<br>Ch 0.05 to 0.25 x45° | Angular tolerances<br>(未注角度公差): |
|  | <6° ± 10'                       |
|  | <30° ± 20'                      |
|  | <120° ± 30'                     |
|  | >120° ± 1°                      |

|                     |          |
|---------------------|----------|
| Material (材料):      | 5052-H32 |
| Weight: (重量) (Kg):  | 0.617    |
| Protection: (表面处理): |          |
| Part Name (零/部件名称): | 上下盖板     |



|                      |                       |                 |                   |
|----------------------|-----------------------|-----------------|-------------------|
| Drawing Number (图号): |                       | YG-TY-B01-006   |                   |
| Drawn by (绘图): 邓展锋   | Date (日期): 2020.05.19 | Size: (图幅): A1  | Sheet (页数): 1 / 1 |
| Check by (校对):       | Date (日期):            | Scale (比例): 1:1 | Revision (版本): A1 |
| Signature by (批准):   | Date (日期):            |                 |                   |



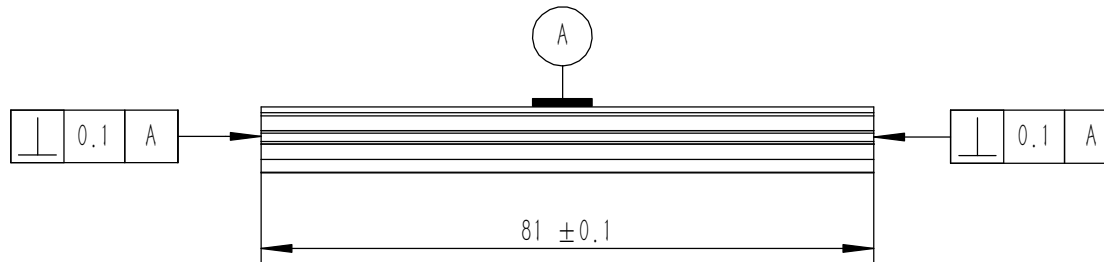
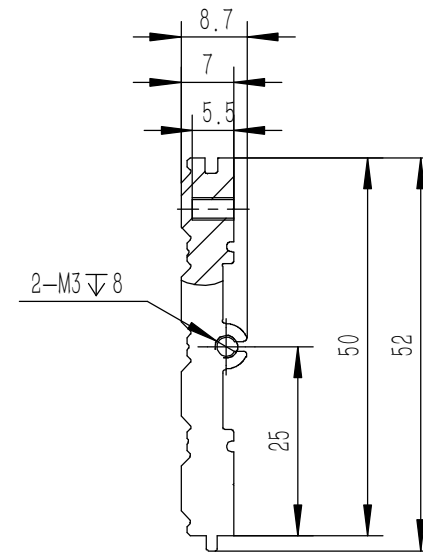
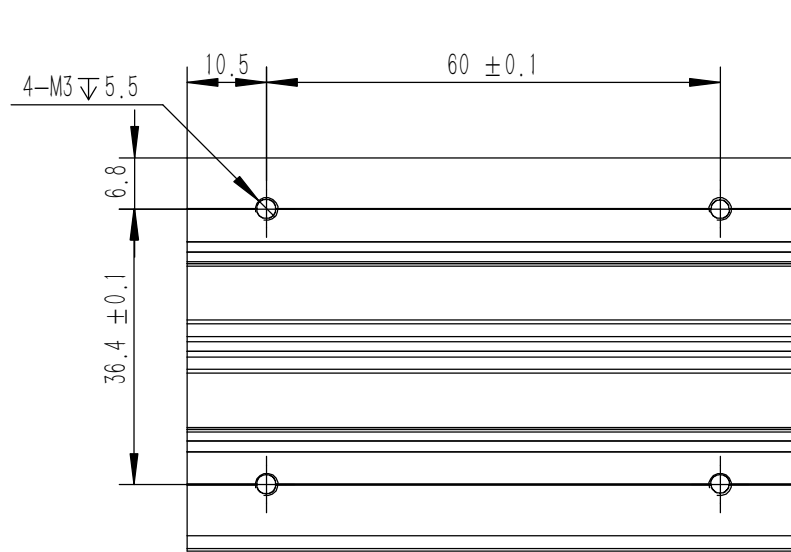
技术要求:

- 1、零件加工表面不应有划痕、擦伤等损伤零件表面的缺陷;
- 2、去除毛刺飞边, 锐角倒钝;
- 3、未标注尺寸见3D数模。

|   |                      |               |             |
|---|----------------------|---------------|-------------|
| Tolerances<br>(未注公差):<br>0.5 to 6 ± 0.1<br>6 to 30 ± 0.2<br>30 to 120 ± 0.3<br>120 to 400 ± 0.4     | Material (材料):       | 6063-T5       |             |
|   | Weight: (重量) (Kg)    | 0.035         |             |
| Break sharp edges<br>(未注锐边倒角):<br>Ch 0.05 to 0.25 x45°<br>Position tolerances<br>(未注位置公差):<br>±0.05 | Protection: (表面处理):  |               |             |
|   | Part Name (零/部件名称):  | B包角2          |             |
| Angular tolerances<br>(未注角度公差):<br><6° ± 10'<br><30° ± 20'<br><120° ± 30'<br>>120° ± 1°             | Part Name (零/部件名称):  | B包角2          |             |
|   | Drawn by (绘图):       | Date (日期):    | 2020.05.18  |
|   | Check by (校对):       | Date (日期):    |             |
|   | Signature by (批准):   | Date (日期):    |             |
|   | Material (材料):       | 6063-T5       |             |
|   | Weight: (重量) (Kg)    | 0.035         |             |
|   | Protection: (表面处理):  |               |             |
|   | Part Name (零/部件名称):  | B包角2          |             |
|   | Drawing Number (图号): | YG-TY-B05-002 |             |
|   | Scale (比例):          | 1:1           | Sheet (页数): |
|   | Revision (版本):       | A1            | 1 / 1       |

**YONGU** 永固





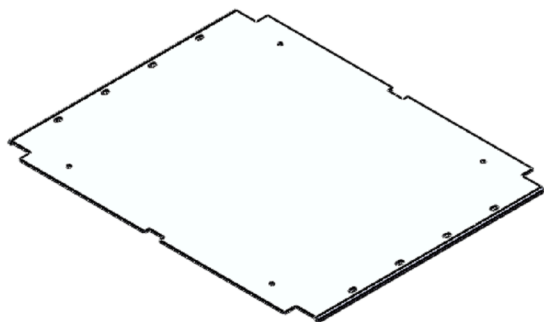
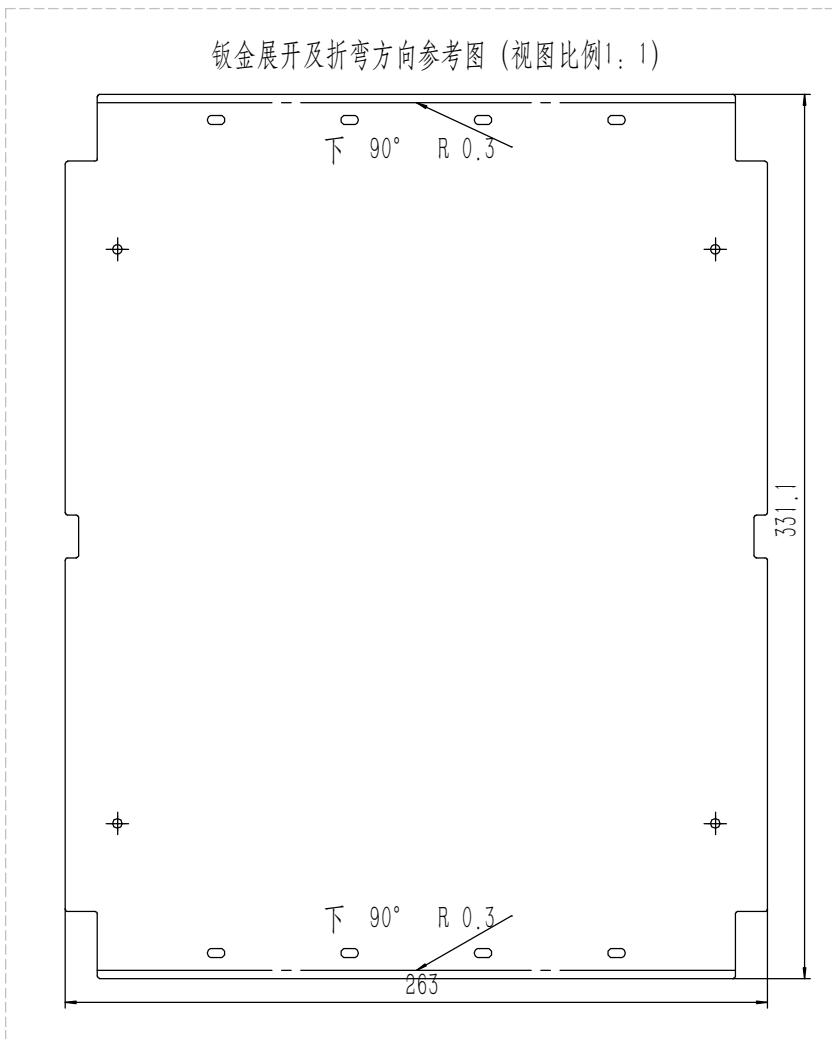
技术要求:

- 1、零件加工表面不应有划痕、擦伤等损伤零件表面的缺陷;
- 2、去除毛刺飞边, 锐角倒钝;
- 3、未标注尺寸见3D数模。

|   |                      |         |                       |
|---|----------------------|---------|-----------------------|
| Tolerances<br>(未注公差):<br>0.5 to 6 ± 0.1<br>6 to 30 ± 0.2<br>30 to 120 ± 0.3<br>120 to 400 ± 0.4     | Material (材料):       | 6063-T5 |                       |
|   | Weight: (重量) (Kg)    | 0.066   |                       |
| Break sharp edges<br>(未注锐边倒角):<br>Ch 0.05 to 0.25 x45°<br>Position tolerances<br>(未注位置公差):<br>±0.05 | Protection: (表面处理):  |         |                       |
|   | Part Name (零/部件名称):  | B组合侧板   |                       |
| Angular tolerances<br>(未注角度公差):<br><6° ± 10'<br><30° ± 20'<br><120° ± 30'<br>>120° ± 1°             | Drawn by (绘图):       | 邓展锋     | Date (日期): 2020.05.19 |
|   | Check by (校对):       |         | Date (日期):            |
|   | Signature by (批准):   |         | Date (日期):            |
|   | Drawing Number (图号): |         | YG-TY-B04-001         |
|   | Size: (图幅):          | A4      | Sheet (页数):           |
|   | Scale (比例):          | 1:1     | 1 / 1                 |
|   | Revision (版本):       | A1      |                       |

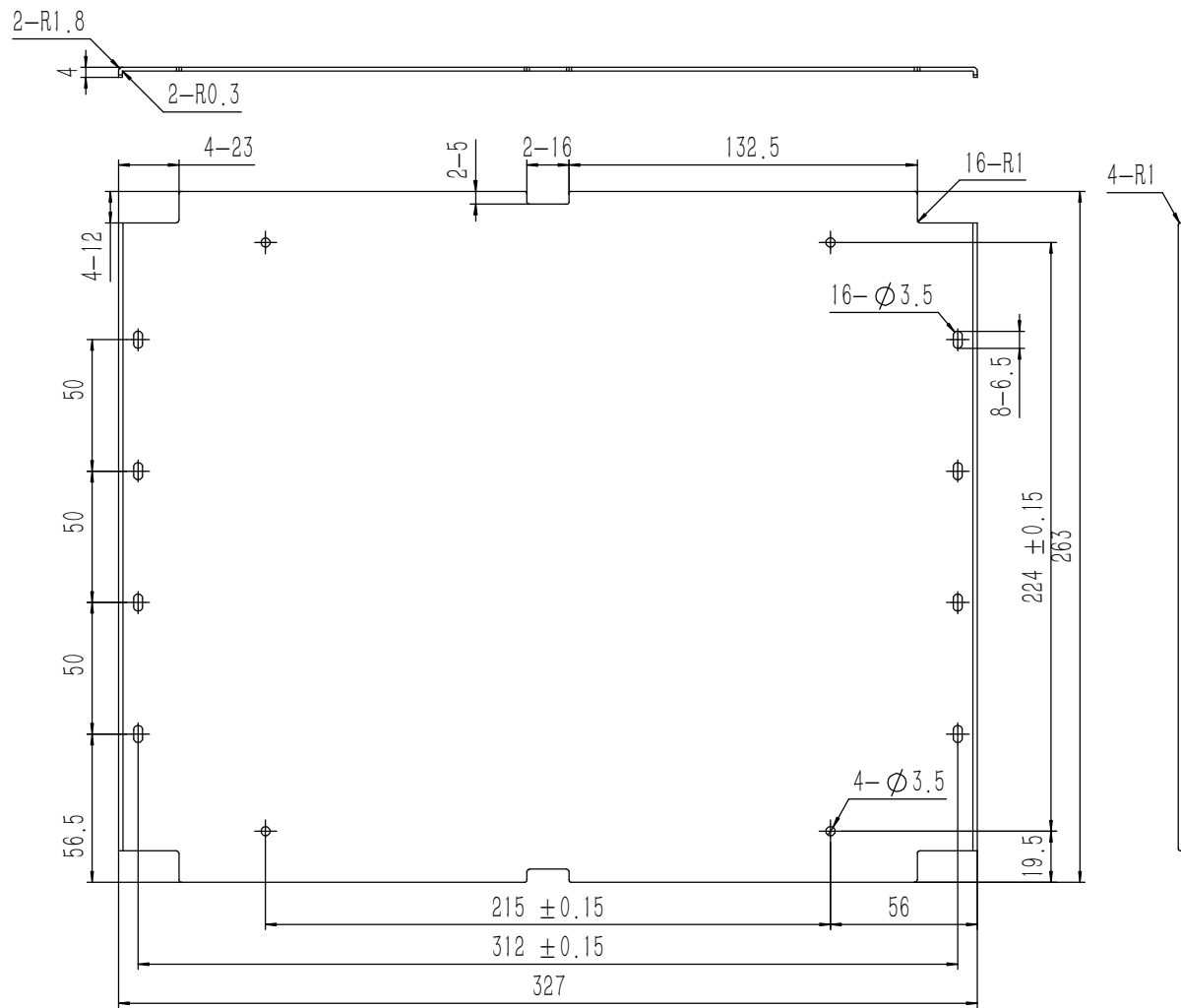
**YONGU** 永固

钣金展开及折弯方向参考图 (视图比例1:1)



技术要求:

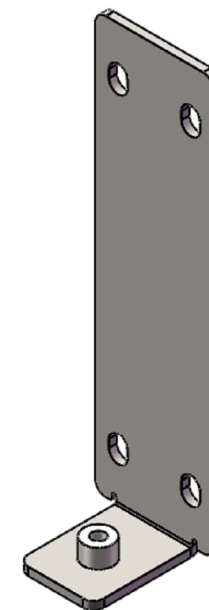
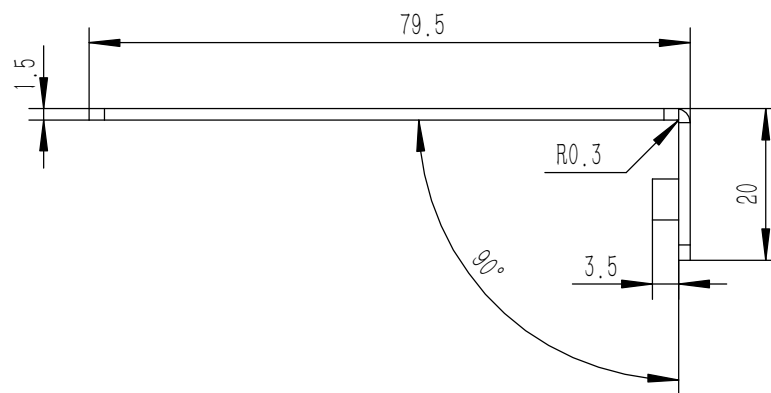
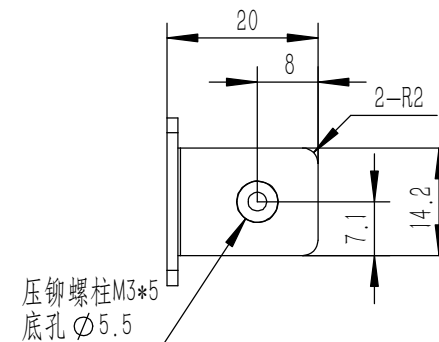
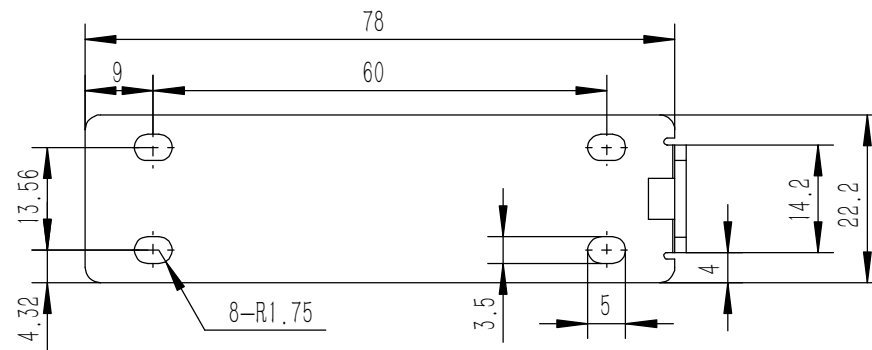
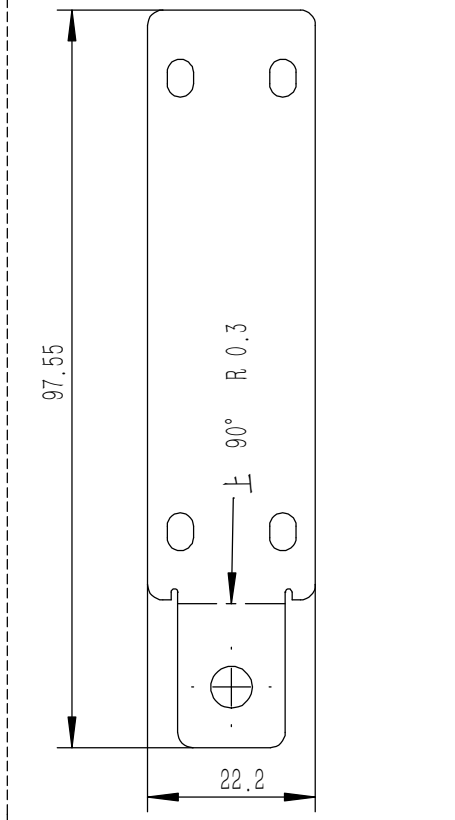
- 1、零件加工表面不应有划痕、擦伤等损伤零件表面的缺陷;
- 2、去除毛刺飞边,锐角倒钝;
- 3、未标注尺寸见3D数模。



业务代码:

|   |   |                            |            |                                       |                |     |                      |
|---|---|----------------------------|------------|---------------------------------------|----------------|-----|----------------------|
| Tolerances<br>(未注公差):<br>0.5 to 6 ± 0.1<br>6 to 30 ± 0.2<br>30 to 120 ± 0.3<br>120 to 400 ± 0.4 | Material (材料):                            | 5052-H32                   |            | <b>YONGU</b> 永固                       |                |     |                      |
|   | Weight: (重量) (Kg):                        | 0.344                      |            |                                       |                |     |                      |
| Break sharp edges<br>(未注锐边倒角):<br>Ch 0.05 to 0.25 x45°  | Protection: (表面处理):                       |                            |            | Drawing Number (图号):<br>YG-TY-A13-006 |                |     |                      |
|   | Position tolerances<br>(未注位置公差):<br>±0.05 | Part Name (零/部件名称):<br>A垫板 |            |                                       |                |     |                      |
| Angular tolerances<br>(未注角度公差):<br><6° ± 10'<br><30° ± 20'<br><120° ± 30'<br>>120° ± 1°         | Drawn by (绘图):                            | 许宏彬                        | Date (日期): | 2020.09.17                            | Size: (图幅):    | A1  | Sheet (页数):<br>1 / 1 |
|   | Check by (校对):                            |                            | Date (日期): |                                       | Scale (比例):    | 1:1 |                      |
|   | Signature by (批准):                        |                            | Date (日期): |                                       | Revision (版本): | A1  |                      |

钣金展开及折弯方向参考图(视图比例1:1)



技术要求:

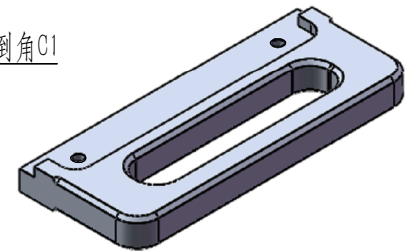
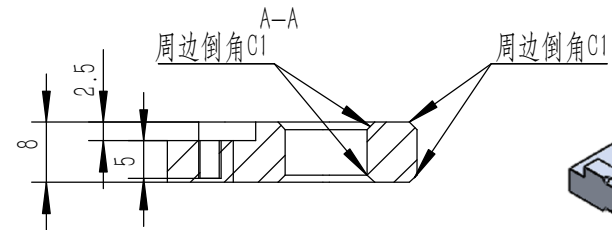
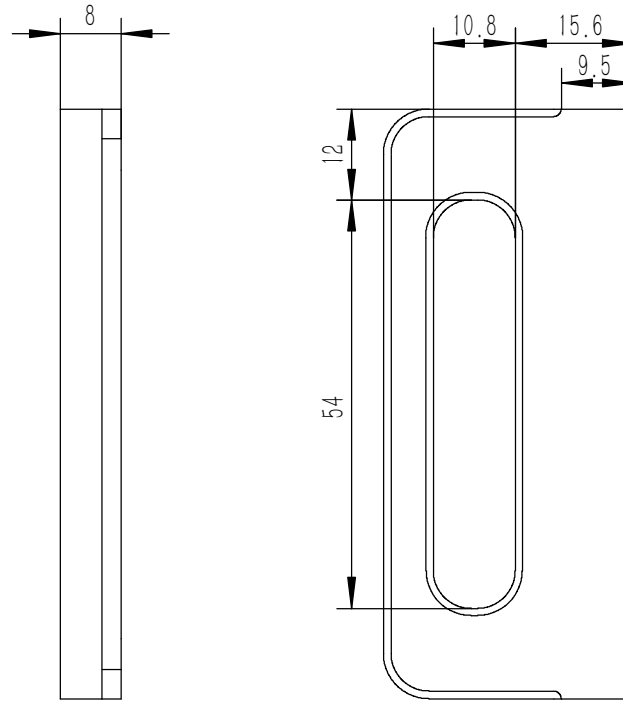
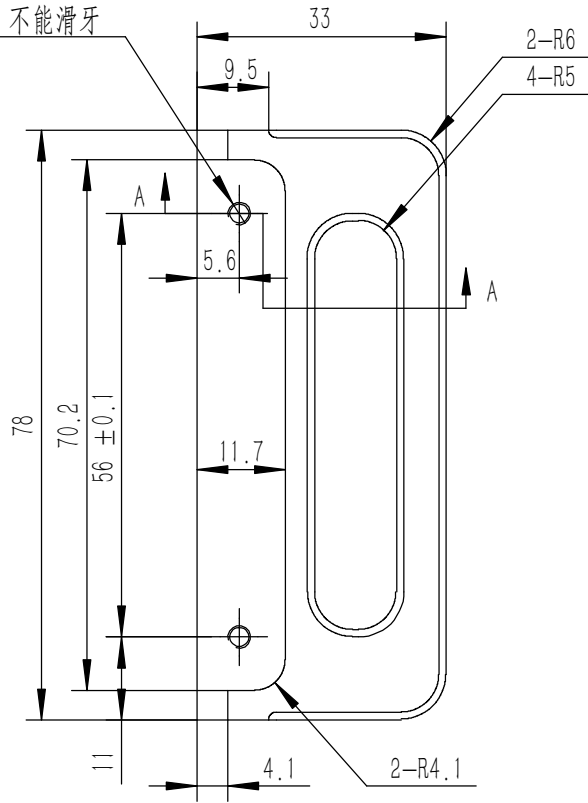
- 1、零件加工表面不应有划痕、擦伤等损伤零件表面的缺陷;
- 2、去除毛刺飞边, 锐角倒钝;
- 3、未标注尺寸见3D数模。

|   |   |                      |                   |
|---|---|----------------------|-------------------|
| Tolerances<br>(未注公差):<br>0.5 to 6 ± 0.1<br>6 to 30 ± 0.2<br>30 to 120 ± 0.3<br>120 to 400 ± 0.4 | Material (材料):                            | 电解板                  |                   |
|   | Weight: (重量) (Kg)                         | 0.023                |                   |
| Break sharp edges<br>(未注锐边倒角):<br>Ch 0.05 to 0.25 x45°  | Protection: (表面处理):                       |                      |                   |
|   | Position tolerances<br>(未注位置公差):<br>±0.05 | Part Name (零/部件名称):  | 侧板连接件 2U          |
| Angular tolerances<br>(未注角度公差):<br><6° ± 10'<br><30° ± 20'<br><120° ± 30'<br>>120° ± 1°         | Material (材料):                            | 电解板                  |                   |
|   | Weight: (重量) (Kg)                         | 0.023                |                   |
| Position tolerances<br>(未注位置公差):<br>±0.05   | Protection: (表面处理):                       |                      |                   |
|   | Part Name (零/部件名称):                       | 侧板连接件 2U             |                   |
| Drawn by (绘图): 莫永康  | Date (日期): 2020.05.19                     | Drawing Number (图号): | YG-TY-A09-001     |
| Check by (校对):  | Date (日期):                                | Size: (图幅): A4       | Sheet (页数): 1 / 5 |
| Signature by (批准):  | Date (日期):                                | Scale (比例): 1:1      | Revision (版本): A1 |

**YONGU** 永固



2-M3  $\nabla$  5不能钻穿，不能滑牙

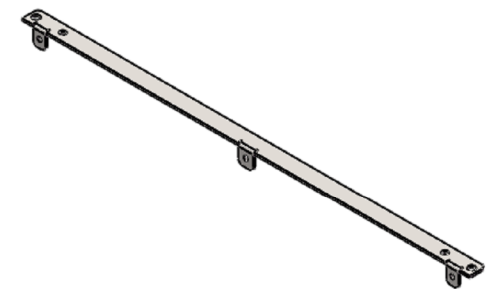
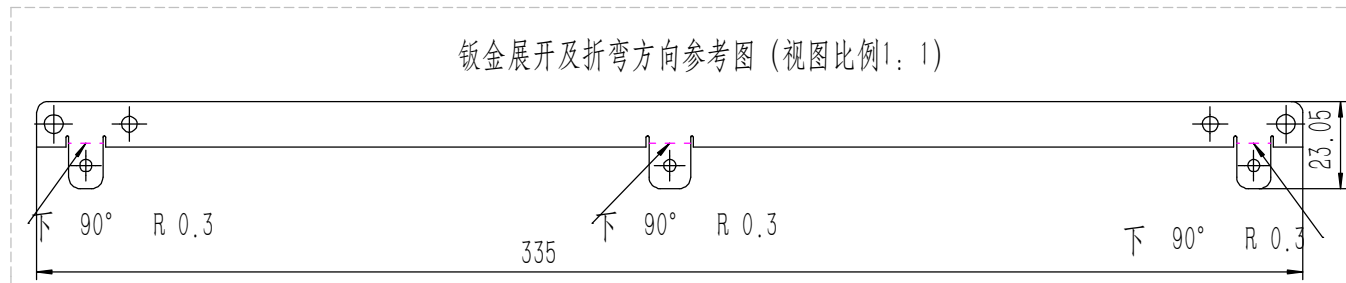
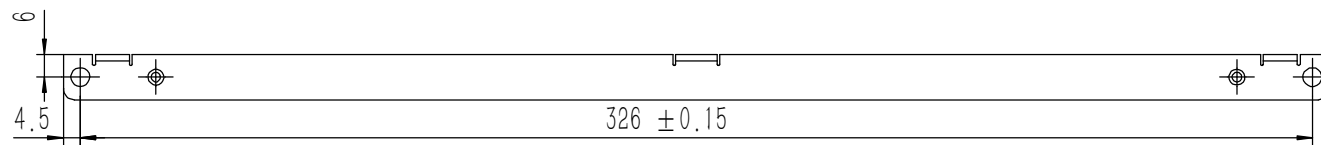
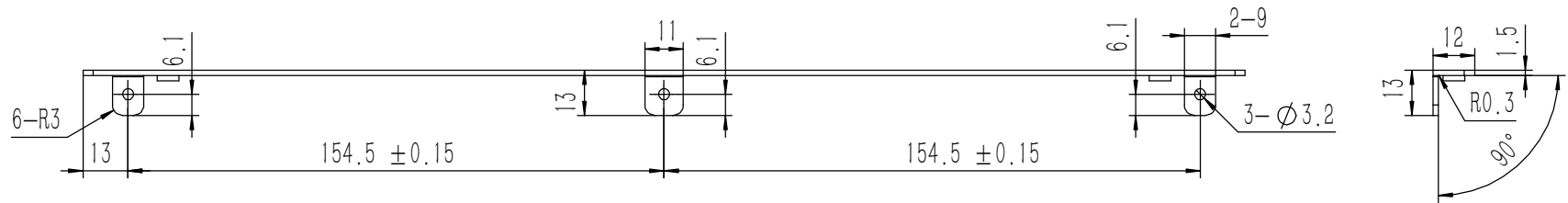
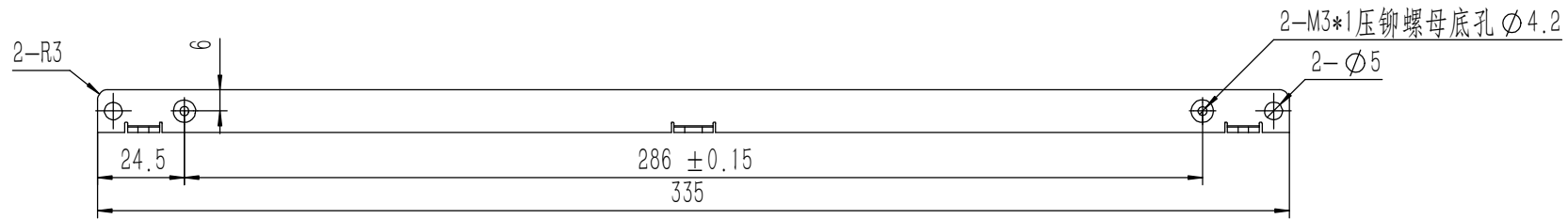


技术要求:

- 1、零件加工表面不应有划痕、擦伤等损伤零件表面的缺陷;
- 2、去除毛刺飞边，锐角倒钝;
- 3、未标注尺寸见3D数模。

|  |   |
|--|---|
| Break sharp edges<br>(未注锐边倒角):<br>Ch 0.05 to 0.25 x45° | Angular tolerances<br>(未注角度公差):<br><6° ± 10'<br><30° ± 20'<br><120° ± 30'<br>>120° ± 1° |
| Position tolerances<br>(未注位置公差):<br>±0.05              |   |

|   |                             |                                    |
|---|-----------------------------|------------------------------------|
| Tolerances<br>(未注公差):<br>0.5 to 6 ± 0.1<br>6 to 30 ± 0.2<br>30 to 120 ± 0.3<br>120 to 400 ± 0.4 | Material (材料): 5052-H32     | <b>YONGU</b> 永固                    |
|   | Weight: (重量) (Kg) 0.036     |                                    |
| Protection: (表面处理):   | Part Name (零/部件名称): 后防护条-2U | Drawing Number (图号): YG-TY-A07-001 |
| Drawn by (绘图): 邓展锋  | Date (日期): 2020.05.16       | Size: (图幅): A4                     |
| Check by (校对):  | Date (日期):                  | Scale (比例): 1:1                    |
| Signature by (批准):  | Date (日期):                  | Revision (版本): A1                  |
|   |                             | Sheet (页数): 1 / 1                  |

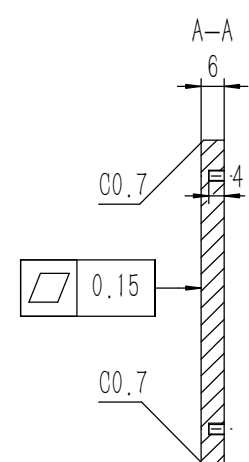
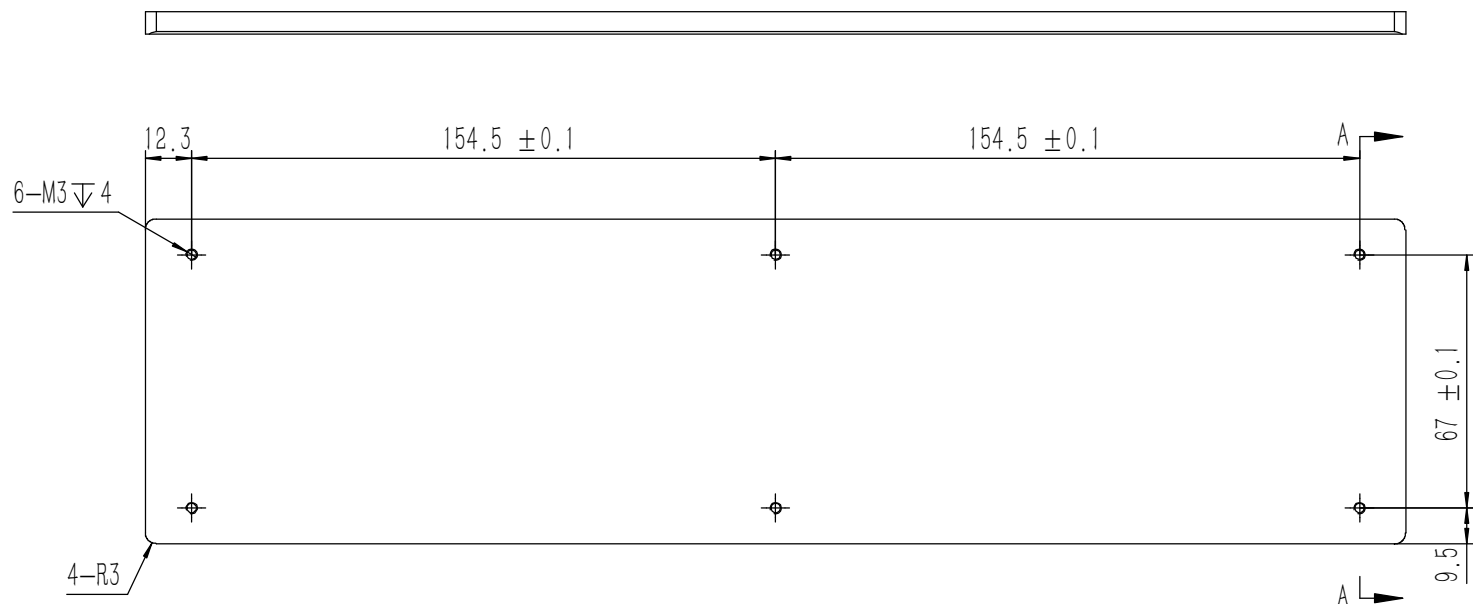
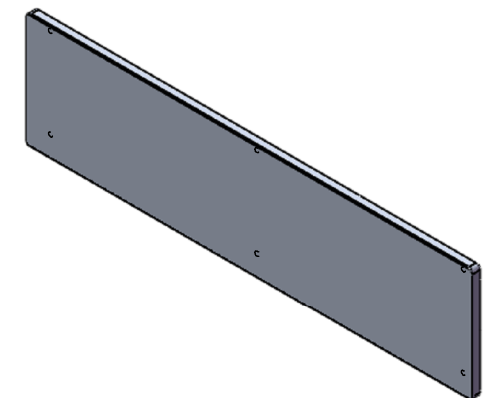
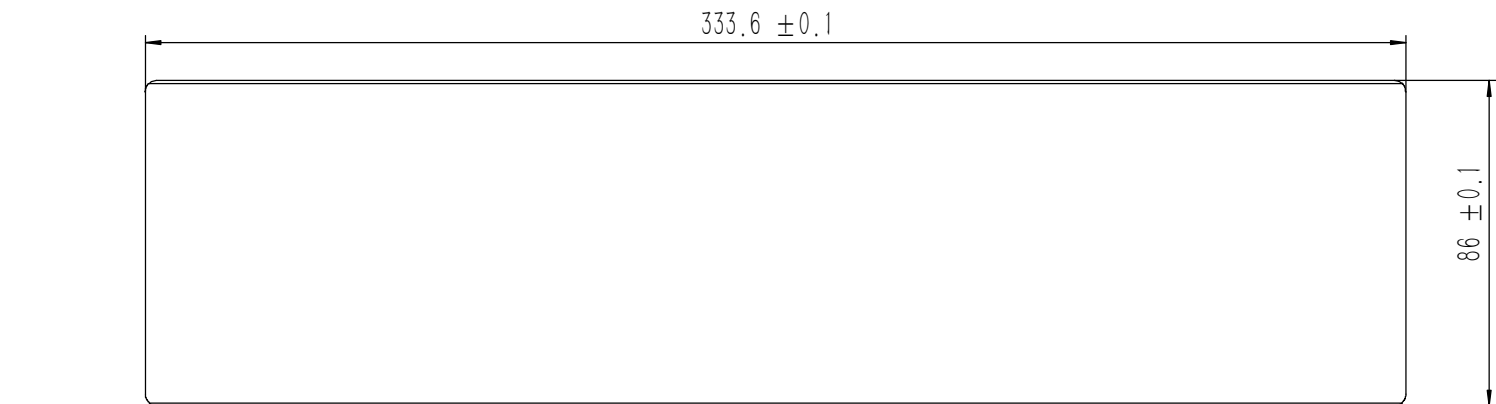


业务代码:

技术要求:

- 1、零件加工表面不应有划痕、擦伤等损伤零件表面的缺陷;
- 2、去除毛刺飞边,锐角倒钝;
- 3、未标注尺寸见3D数模。

|   |   |                             |                                    |
|---|---|-----------------------------|------------------------------------|
| Tolerances<br>(未注公差):<br>0.5 to 6 ± 0.1<br>6 to 30 ± 0.2<br>30 to 120 ± 0.3<br>120 to 400 ± 0.4 | Material (材料): 电解板  | YONGU 永固                    | Drawing Number (图号): YG-TY-A10-002 |
|   | Weight: (重量) (Kg): 0.050  |                             |                                    |
| Break sharp edges<br>(未注锐边倒角):<br>Ch 0.05 to 0.25 x45°  | Protection: (表面处理): 毛坯  | Part Name (零/部件名称): 面板上固定件2 | Size: (图幅): A2                     |
|   | Angular tolerances<br>(未注角度公差):<br><6° ± 10'<br><30° ± 20'<br><120° ± 30'<br>>120° ± 1° |                             |                                    |
| Position tolerances<br>(未注位置公差): ±0.05  | Check by (校对):  | Date (日期):                  | Scale (比例): 1:1                    |
|   | Signature by (批准):  | Date (日期):                  | Revision (版本): A1                  |
|   |   |                             | Sheet (页数): 1 / 1                  |



- 技术要求:
- 1、零件加工表面不应有划痕、擦伤等损伤零件表面的缺陷;
  - 2、去除毛刺飞边, 锐角倒钝;
  - 3、未标注尺寸见3D数模。

|   |   |                     |                                    |
|---|---|---------------------|------------------------------------|
| Tolerances<br>(未注公差):<br>0.5 to 6 ± 0.1<br>6 to 30 ± 0.2<br>30 to 120 ± 0.3<br>120 to 400 ± 0.4 | Material (材料):                            | 5052-H32            |                                    |
|   | Weight: (重量) (Kg):                        | 0.460               |                                    |
| Break sharp edges<br>(未注锐边倒角):<br>Ch 0.05 to 0.25 x45°  | Protection: (表面处理):                       |                     |                                    |
|   | Position tolerances<br>(未注位置公差):<br>±0.05 | Part Name (零/部件名称): | 前后面板-2U                            |
| Angular tolerances<br>(未注角度公差):<br><6° ± 10'<br><30° ± 20'<br><120° ± 30'<br>>120° ± 1°         | Drawn by (绘图):                            | 莫永康                 | Date (日期): 2020.05.18              |
|   |   | Check by (校对):      | Date (日期):                         |
|   | Signature by (批准):                        | Date (日期):          | Size: (图幅): A2                     |
|   |   |                     | Scale (比例): 1:1                    |
|   |   |                     | Revision (版本): A1                  |
|   |   |                     | Drawing Number (图号): YG-TY-A12-005 |
|   |   |                     | Sheet (页数): 1 / 1                  |

