

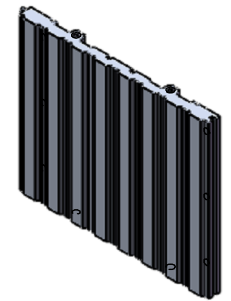
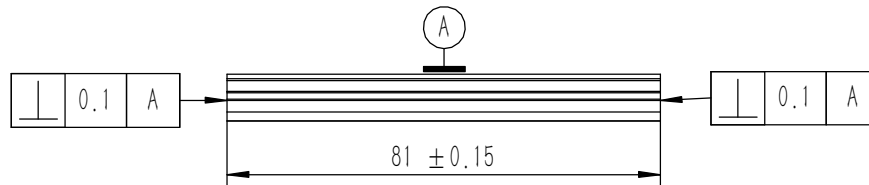
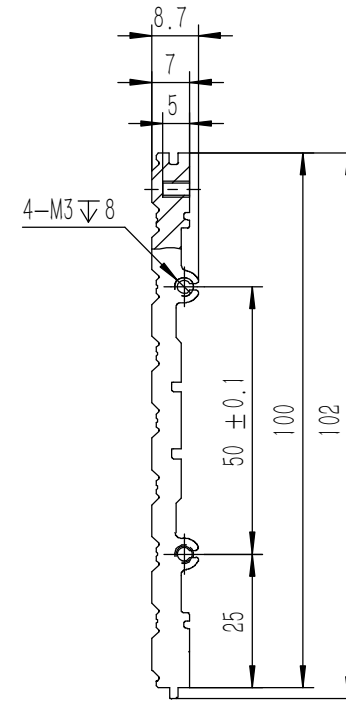
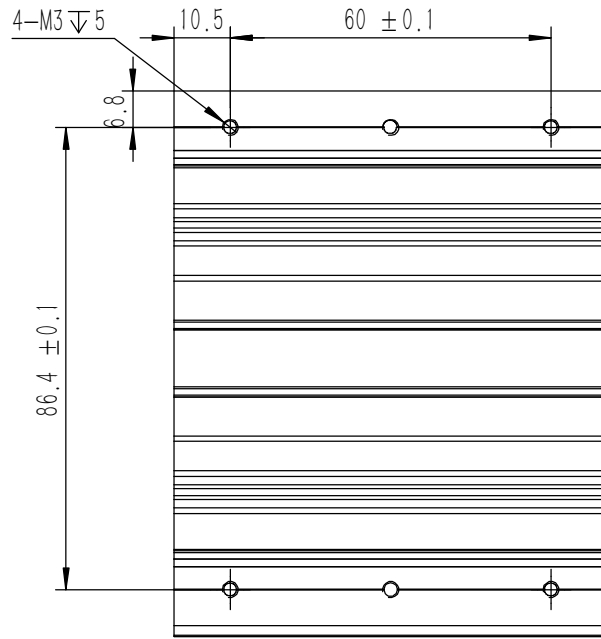
序号	图号	名称	材料	数量	单重	备注
22	DIN-9250-S-NL-M3	不锈钢防松垫圈	SUS 304	8	0.000	
21	YG-TY-A13-011	A垫板	5052-H32	1	0.594	
20	YG-TY-XJD-001	自粘胶垫35X11X3	硅橡胶	8	0.0013	
19	GB-T-70.3-2000-C-NI-M3X6	芳生镀白镍内六角沉头螺丝M3X6	普通碳钢	16	0.0004	
18	YG-TY-A07-001	后防护条-2U	5052-H32	2	0.036	
17	YG-TY-A12-009	前后面板-2U	5052-H32	2	0.571	
16	YG-TY-A11-003	面板下固定件3	电解板	2	0.067	
15	GB-T-973-1976-C-NI-M3X12	碳钢镀镍十字大扁头螺丝M3X12	普通碳钢	16	0.001	
14	S-M3-1-ZI	压铆螺母镀白锌M3X1	普通碳钢	8	0.3750	
13	GB-T-973-1976-C-NI-M3X4	碳钢镀镍十字大扁头螺丝M3X4	普通碳钢	42	0.0005	
12	YG-TY-B01-011	上下盖板	5052-H32	1	1.046	
11	BSO-M3-5-ZI-D5.4	压铆螺柱 M3X5	普通碳钢	10	0.001	
10	GB-T-973-1976-C-NI-M3X6	碳钢镀镍十字大扁头螺丝M3X6	普通碳钢	16	0.0006	
9	YG-TY-B05-002	B包角2	6063-T5	4	0.035	
8	YG-TY-A06-001	拉手-2U	6063-T5	2	0.070	
7	YG-TY-A10-003	面板上固定件3	电解板	2	0.061	
6	YG-TY-B05-001	B包角1	6063-T5	4	0.035	
5	YG-TY-A08-001	侧板固定件-2U	6063-T5	4	0.029	
4	YG-TY-B02-011	上盖板	5052-H32	1	1.008	
3	YG-TY-A09-001	侧板连接件 2U	电解板	6	0.022	
2	YG-TY-B03-001	B组合侧板	6063-T5	6	0.119	
1	YG-TY-B04-001	B组合侧板	6063-T5	2	0.066	

- 技术要求:
- 1、必须按照设计、工艺要求及本规定和有关标准进行装配;
  - 2、所有零部件(包括外购、外协件)必须具有检验合格证方能进行装配;
  - 3、零件在装配前必须清理和清洗干净,不得有毛刺、飞边、氧化皮、锈蚀、切屑、砂粒、灰尘和油污等,并应符合相应清洁度要求;
  - 4、装配过程中零件不得磕碰、划伤和锈蚀;
  - 5、油漆未干的零件不得进行装配;
  - 6、相对运动的零件,装配时接触面间应加润滑油脂;
  - 7、各零、部件装配后相对位置应准确。

Break sharp edges (未注锐边倒角): Ch 0.05 to 0.25 x45°	Angular tolerances (未注角度公差): <6° ± 10' <30° ± 20' <120° ± 30' >120° ± 1°
Position tolerances (未注位置公差): ± 0.05	

Tolerances (未注公差): 0.5 to 6 ± 0.1 6 to 30 ± 0.2 30 to 120 ± 0.3 120 to 400 ± 0.4		Material (材料): (装配图)		<b>YONGU</b> 永固
Weight: (重量) (Kg): 5.707		Protection: (表面处理):		
Part Name (零/部件名称):		Drawing Number (图号):		
B09机箱		YG-B09-1000-000		
Drawn by (绘图): 邓展锋	Date (日期): 2020.05.22	Size (图幅): A0	Sheet (页数):	
Check by (校对):	Date (日期):	Scale (比例): 1:1.3	1 / 1	
Signature by (批准):	Date (日期):	Revision (版本): A1		





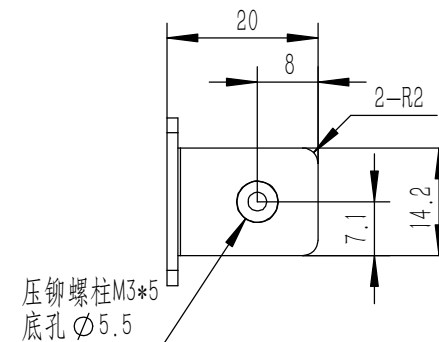
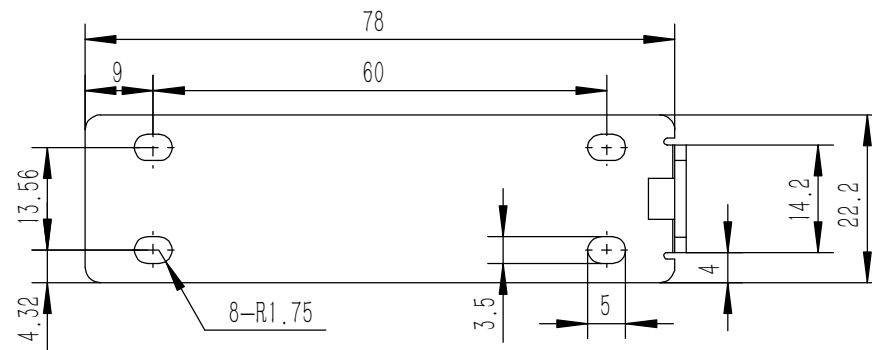
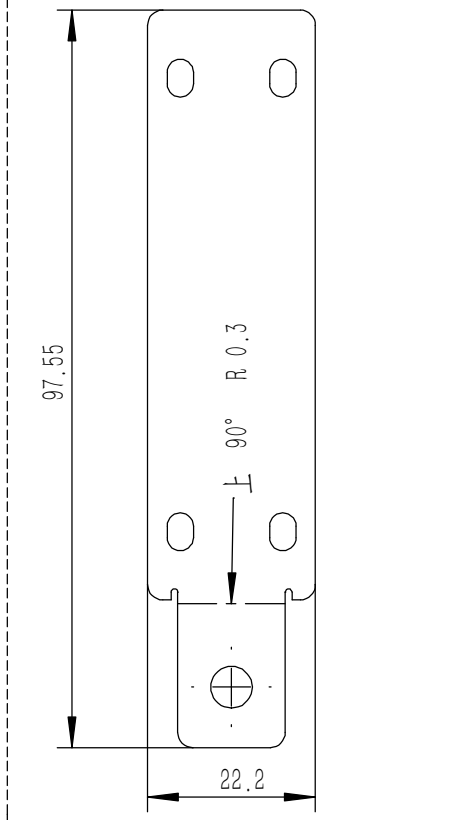
技术要求:

- 1、零件加工表面不应有划痕、擦伤等损伤零件表面的缺陷;
- 2、去除毛刺飞边,锐角倒钝;
- 3、未标注尺寸见3D数模。

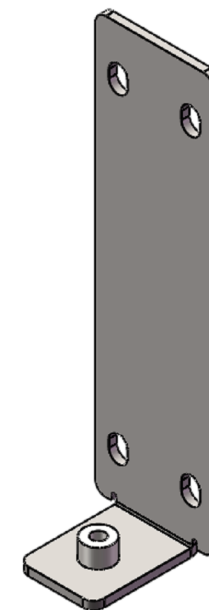
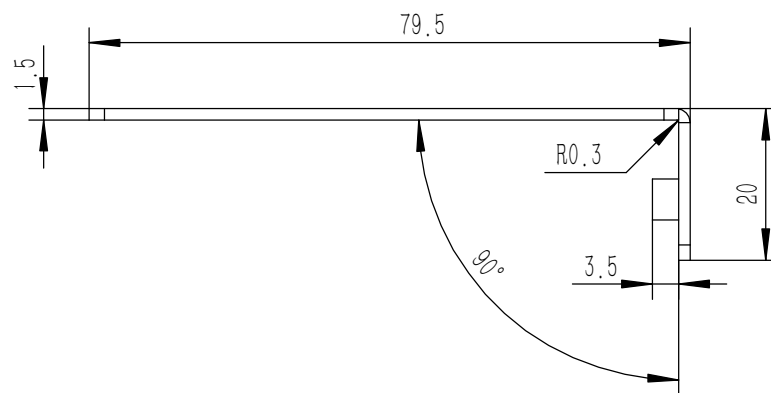
Tolerances (未注公差): 0.5 to 6 ± 0.1 6 to 30 ± 0.2 30 to 120 ± 0.3 120 to 400 ± 0.4	Material (材料):	6063-T5	
	Weight: (重量) (Kg)	0.119	
Break sharp edges (未注锐边倒角): Ch 0.05 to 0.25 x45°	Protection: (表面处理):		
	Position tolerances (未注位置公差): ±0.05	Part Name (零/部件名称):	B组合侧板
Angular tolerances (未注角度公差): <6° ± 10' <30° ± 20' <120° ± 30' >120° ± 1°	Drawn by (绘图):	邓展锋	Date (日期): 2020.05.19
	Check by (校对):		Date (日期):
	Signature by (批准):		Date (日期):
	Drawing Number (图号):		YG-TY-B03-001
	Size (图幅):	A3	Sheet (页数): 1 / 1
	Scale (比例):	1:1	
	Revision (版本):	A1	

**YONGU** 永固

钣金展开及折弯方向参考图(视图比例1:1)



压铆螺柱M3\*5  
底孔 $\varnothing$ 5.5

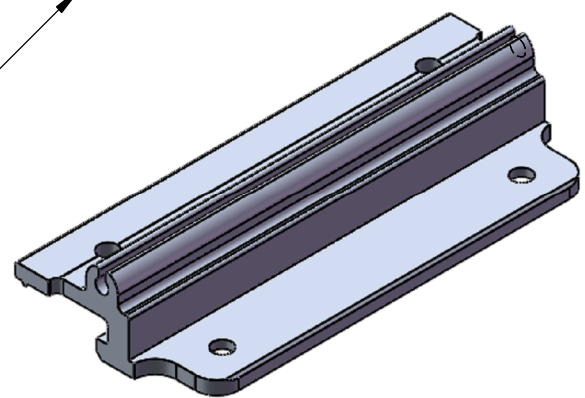
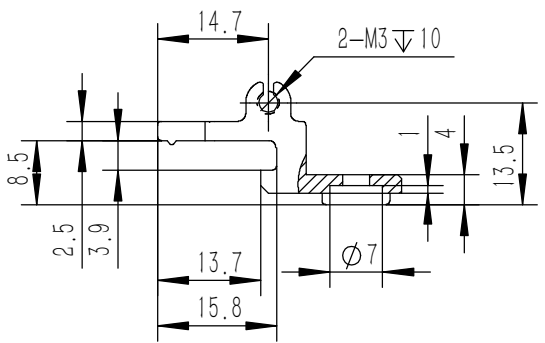
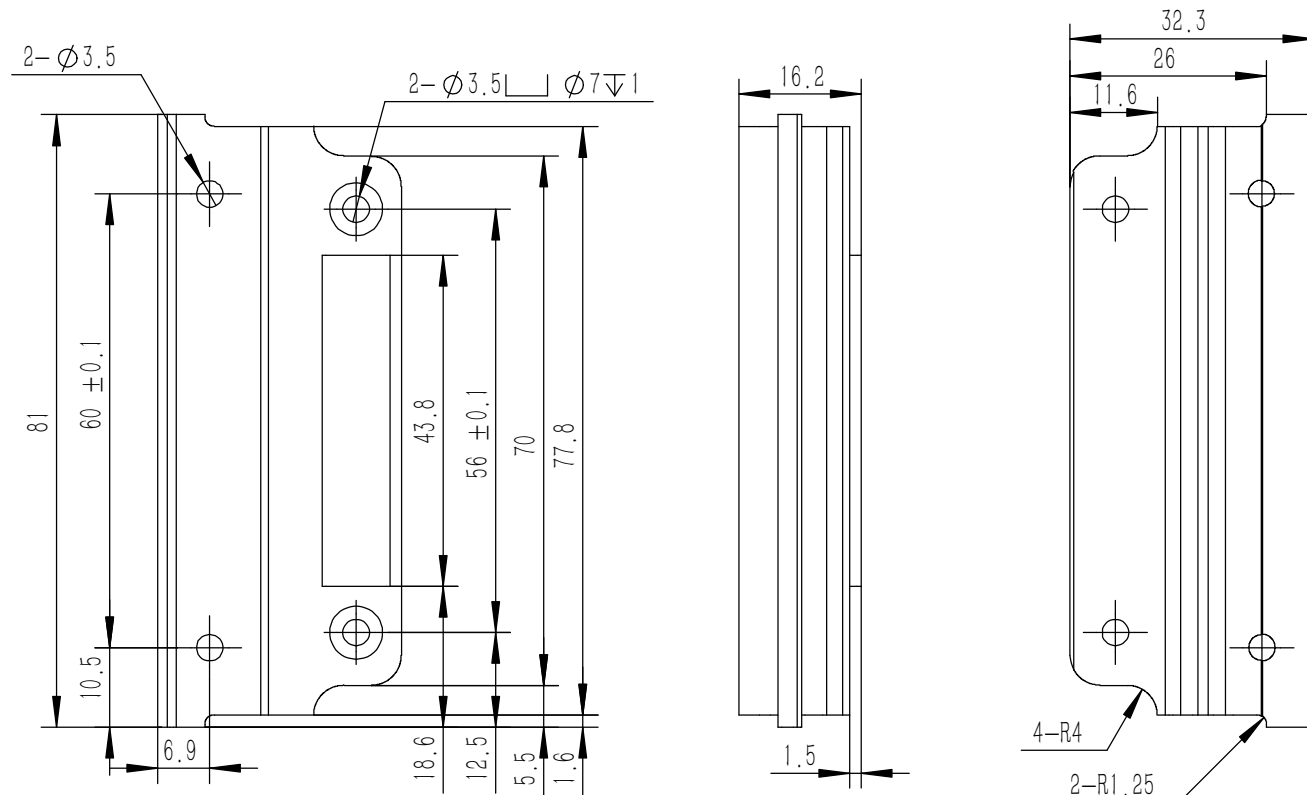


技术要求:

- 1、零件加工表面不应有划痕、擦伤等损伤零件表面的缺陷;
- 2、去除毛刺飞边,锐角倒钝;
- 3、未标注尺寸见3D数模。

Tolerances (未注公差): 0.5 to 6 ± 0.1 6 to 30 ± 0.2 30 to 120 ± 0.3 120 to 400 ± 0.4	Material (材料): 电解板	<b>YONGU</b> 永固	
	Weight: (重量) (Kg) 0.023		
Break sharp edges (未注锐边倒角): Ch 0.05 to 0.25 x45°	Protection: (表面处理):	Part Name (零/部件名称): 侧板连接件 2U	
	Position tolerances (未注位置公差): ±0.05	Part Name (零/部件名称): 侧板连接件 2U	Drawing Number (图号): YG-TY-A09-001
Angular tolerances (未注角度公差): <6° ± 10' <30° ± 20' <120° ± 30' >120° ± 1°	Part Name (零/部件名称): 侧板连接件 2U	Drawn by (绘图): 莫永康	Date (日期): 2020.05.19
	Part Name (零/部件名称): 侧板连接件 2U	Check by (校对):	Date (日期):
Part Name (零/部件名称): 侧板连接件 2U	Part Name (零/部件名称): 侧板连接件 2U	Signature by (批准):	Date (日期):
		Scale (比例): 1:1	Sheet (页数): 1 / 5
		Revision (版本): A1	



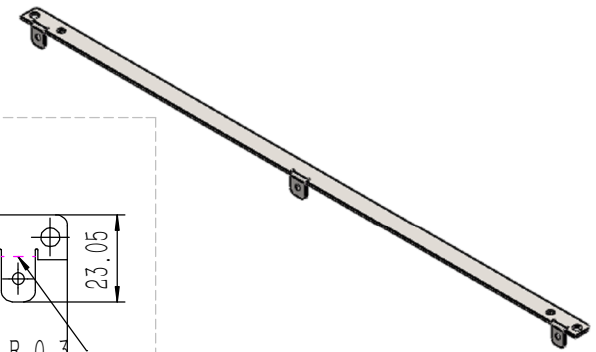
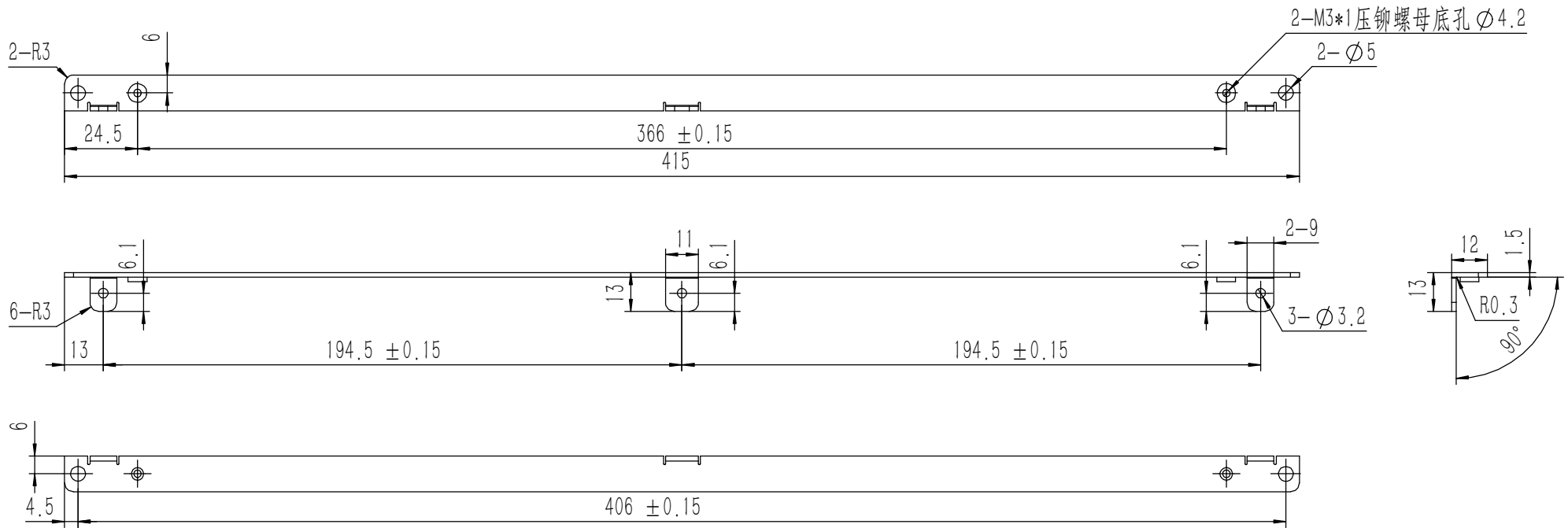


- 技术要求:
- 1、零件加工表面不应有划痕、擦伤等损伤零件表面的缺陷;
  - 2、去除毛刺飞边, 锐角倒钝;
  - 3、未标注尺寸见3D数模。

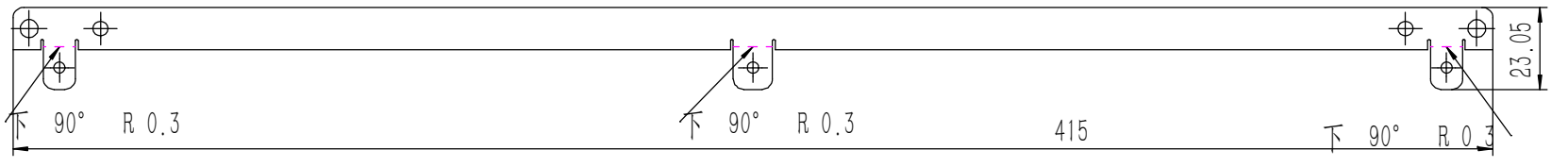
Tolerances (未注公差): 0.5 to 6 ± 0.1 6 to 30 ± 0.2 30 to 120 ± 0.3 120 to 400 ± 0.4	Material (材料):	6063-T5	
	Weight: (重量) (Kg)	0.029	
	Protection: (表面处理):		
	Part Name (零/部件名称):	侧板固定件-2U	
Break sharp edges (未注锐边倒角): Ch 0.05 to 0.25 x45°	Angular tolerances (未注角度公差): <6° ± 10' <30° ± 20' <120° ± 30' >120° ± 1°	Drawing Number (图号): YG-TY-A08-001	Size: (图幅): A4
Position tolerances (未注位置公差): ±0.05	Drawn by (绘图): 邓展锋	Date (日期): 2020.05.18	Sheet (页数):
	Check by (校对):	Date (日期):	Scale (比例): 1:1
	Signature by (批准):	Date (日期):	Revision (版本): A1
			0 / 0







钣金展开及折弯方向参考图 (视图比例1:1)



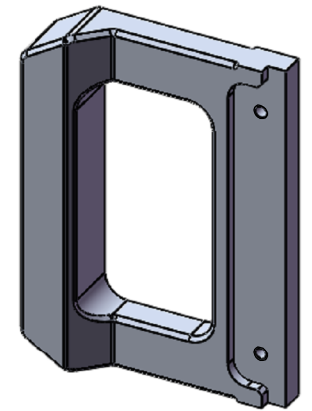
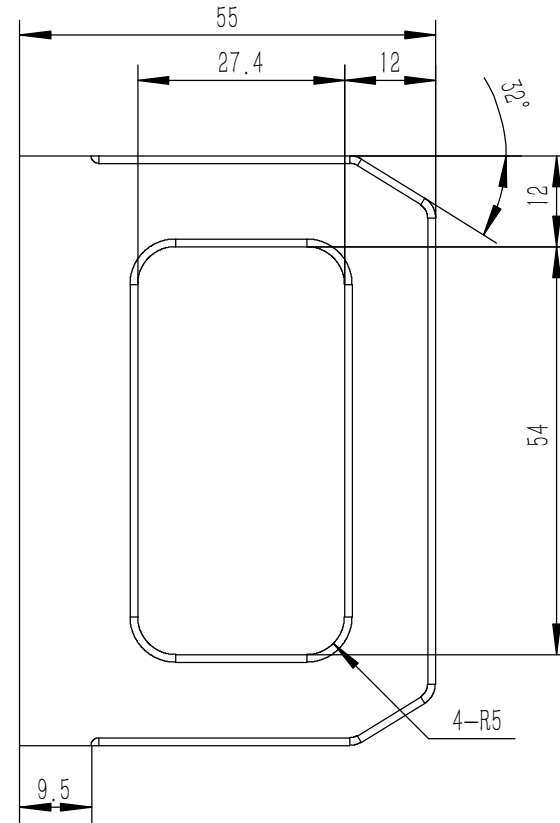
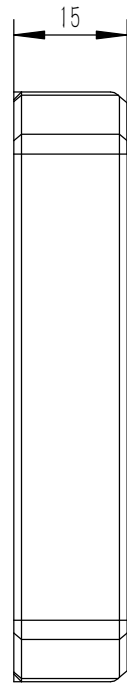
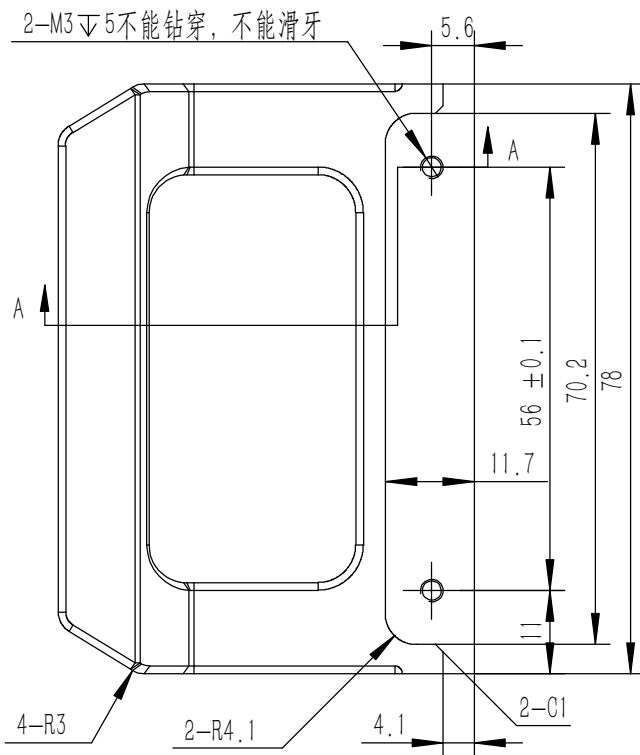
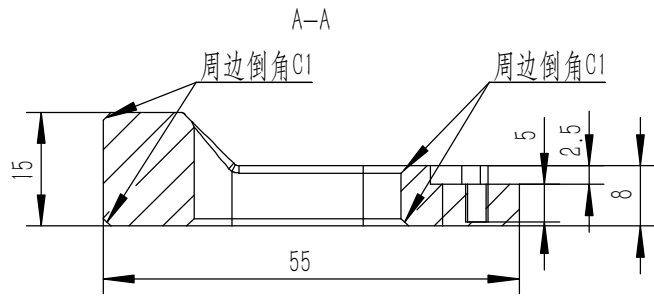
业务代码:

技术要求:

- 1、零件加工表面不应有划痕、擦伤等损伤零件表面的缺陷;
- 2、去除毛刺飞边, 锐角倒钝;
- 3、未标注尺寸见3D数模。

Tolerances (未注公差): 0.5 to 6 ± 0.1 6 to 30 ± 0.2 30 to 120 ± 0.3 120 to 400 ± 0.4	Material (材料):	电解板	<b>YONGU</b> 永固	
	Weight: (重量) (Kg):	0.061		
	Protection: (表面处理):	毛坯		
	Part Name (零/部件名称):	面板上固定件3		
Break sharp edges (未注锐边倒角): Ch 0.05 to 0.25 x45°	Angular tolerances (未注角度公差): <6° ± 10' <30° ± 20' <120° ± 30' >120° ± 1°	Drawing Number (图号): YG-TY-A10-003	Size: (图幅): A2 Scale (比例): 1:1 Revision (版本): A1	
		Drawn by (绘图): 许宏彬 Date (日期): 2020.09.18		Sheet (页数): 1 / 1
		Check by (校对): Signature by (批准):		



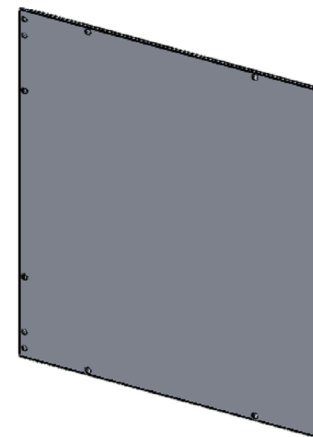
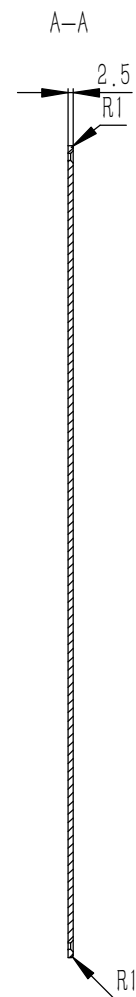
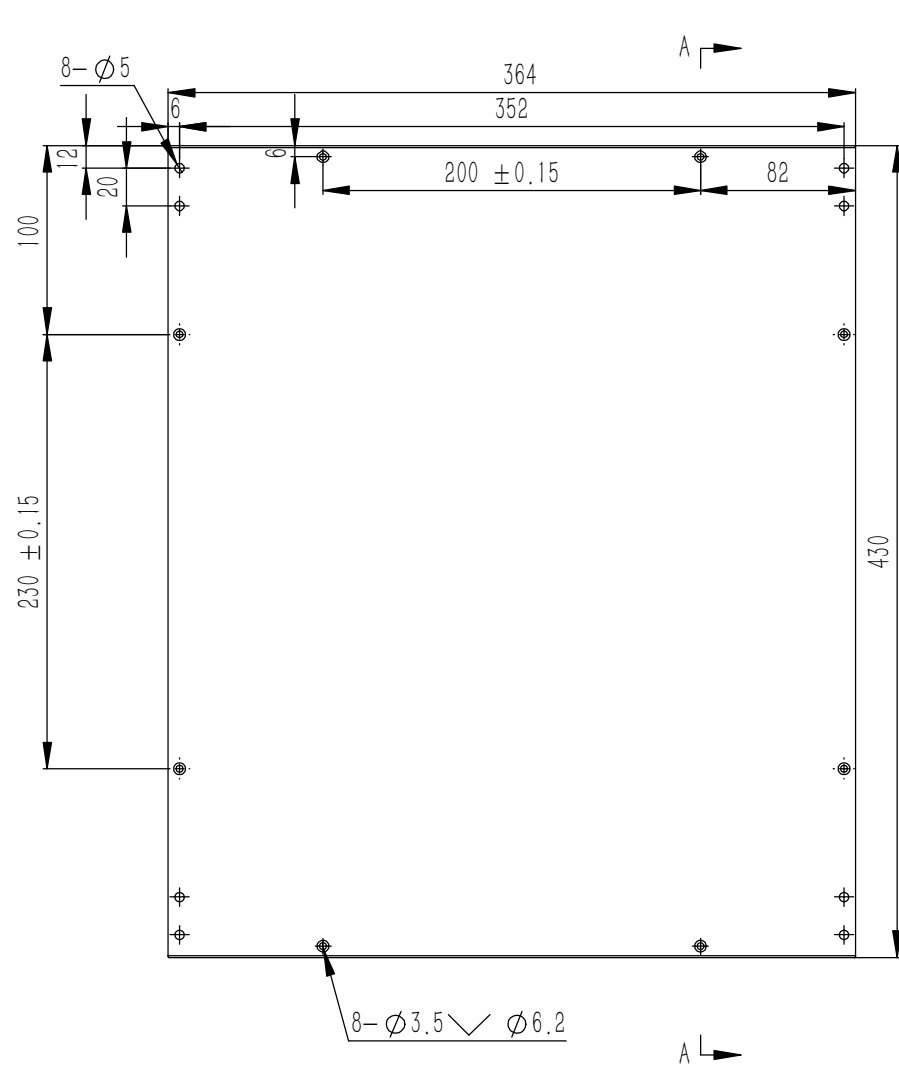


技术要求:

- 1、零件加工表面不应有划痕、擦伤等损伤零件表面的缺陷;
- 2、去除毛刺飞边, 锐角倒钝;
- 3、未标注尺寸见3D数模。

Tolerances (未注公差): 0.5 to 6 ± 0.1 6 to 30 ± 0.2 30 to 120 ± 0.3 120 to 400 ± 0.4	Material (材料): 6063-T5	<b>YONGU</b> 永固	
	Weight: (重量) (Kg) 0.070		
Break sharp edges (未注锐边倒角): Ch 0.05 to 0.25 x45°	Protection: (表面处理):	Part Name (零/部件名称):	
	Position tolerances (未注位置公差): ±0.05	Part Name (零/部件名称): 拉手-2U	Drawing Number (图号): YG-TY-A06-001
Angular tolerances (未注角度公差): <6° ± 10' <30° ± 20' <120° ± 30' >120° ± 1°	Drawn by (绘图): 邓展锋	Date (日期): 2020.05.18	Size: (图幅): A4
	Check by (校对):	Date (日期):	Scale (比例): 1:1
	Signature by (批准):	Date (日期):	Revision (版本): A1
		Sheet (页数): 1 / 1	



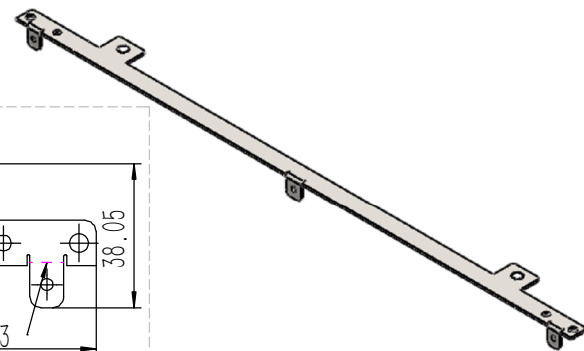
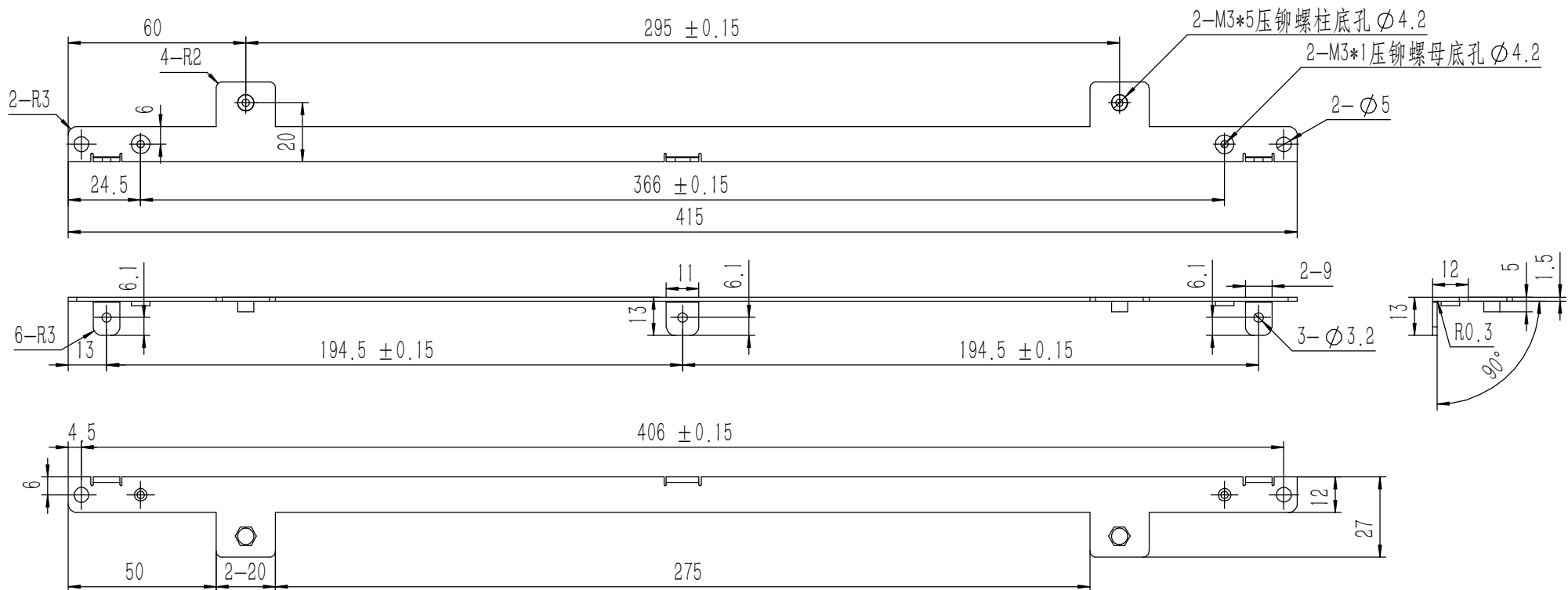


技术要求:

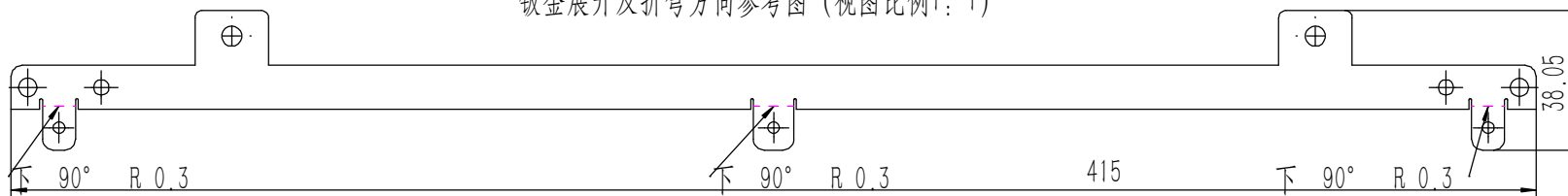
- 1、零件加工表面不应有划痕、擦伤等损伤零件表面的缺陷;
- 2、去除毛刺飞边,锐角倒钝;
- 3、未标注尺寸见3D数模。

Break sharp edges (未注锐边倒角): Ch 0.05 to 0.25 x45°	Angular tolerances (未注角度公差): <6° ± 10' <30° ± 20' <120° ± 30' >120° ± 1°
Position tolerances (未注位置公差): ±0.05	

Tolerances (未注公差): 0.5 to 6 ± 0.1 6 to 30 ± 0.2 30 to 120 ± 0.3 120 to 400 ± 0.4	Material (材料):	5052-H32		<b>YONGU</b> 永固		
	Weight: (重量) (Kg):	1.046				
	Protection: (表面处理):					
	Part Name (零/部件名称):	上下盖板				
	Material (材料):	5052-H32		Drawing Number (图号):	YG-TY-B01-011	
	Weight: (重量) (Kg):	1.046		Size: (图幅):	A0	
	Protection: (表面处理):			Scale (比例):	1:1	
	Part Name (零/部件名称):	上下盖板		Revision (版本):	A1	
	Drawn by (绘图):	邓展锋	Date (日期):	2020.05.19	Sheet (页数):	1 / 1
	Check by (校对):		Date (日期):			
	Signature by (批准):		Date (日期):			



钣金展开及折弯方向参考图 (视图比例1:1)

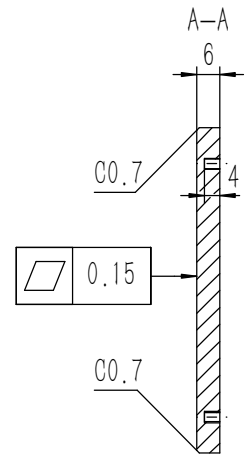
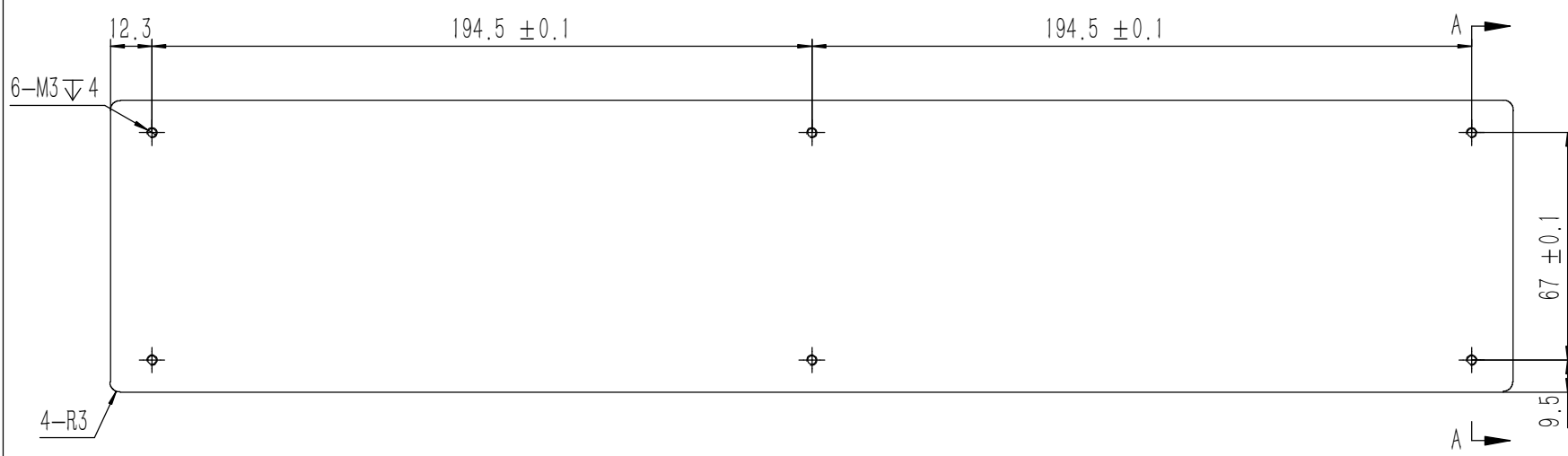
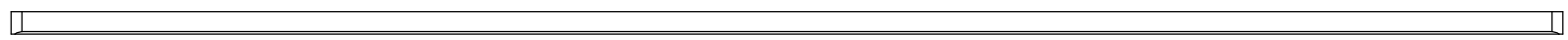
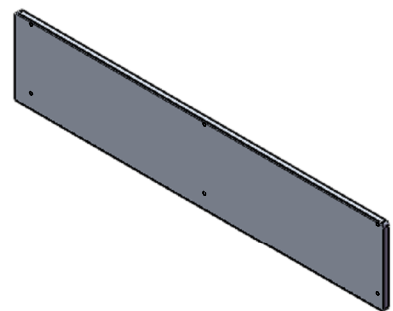
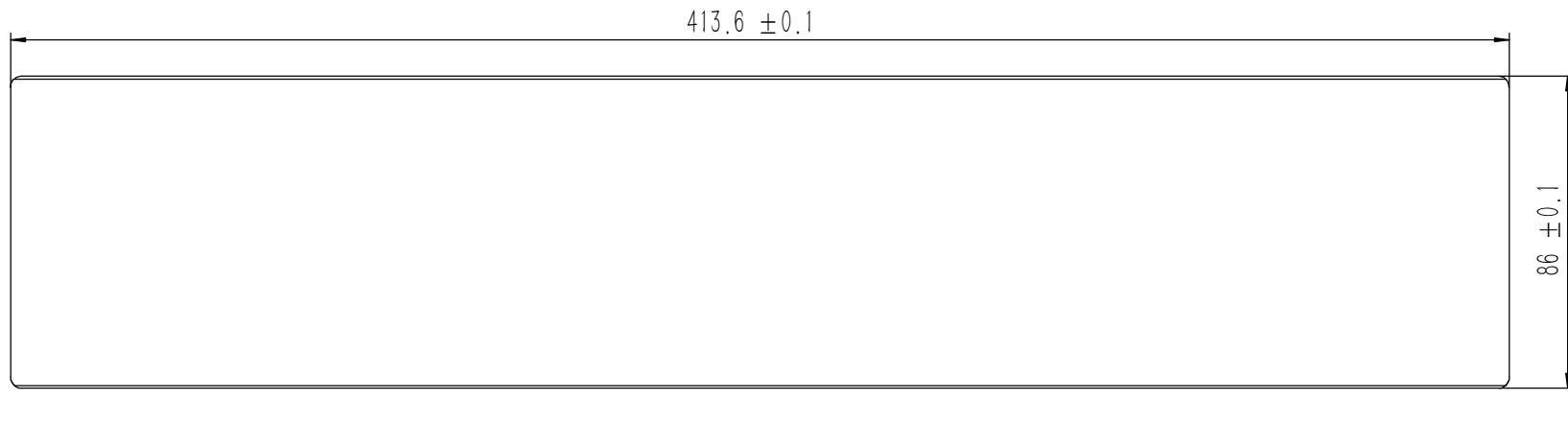


业务代码:

技术要求:

- 1、零件加工表面不应有划痕、擦伤等损伤零件表面的缺陷;
- 2、去除毛刺飞边, 锐角倒钝;
- 3、未标注尺寸见3D数模。

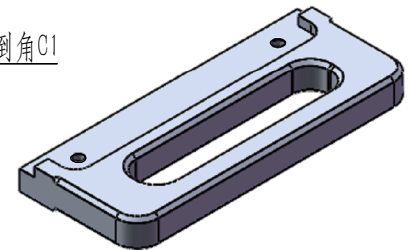
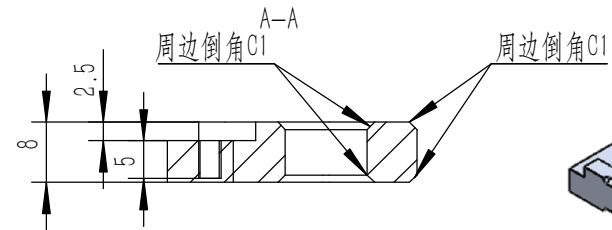
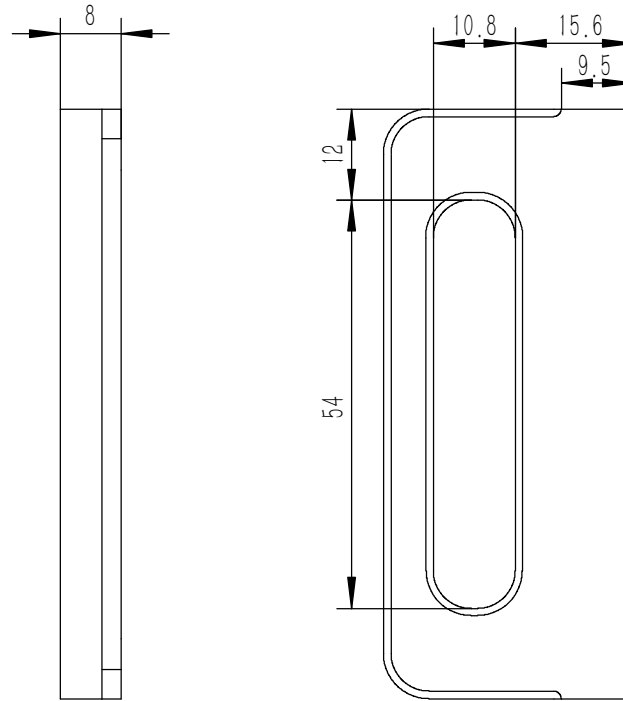
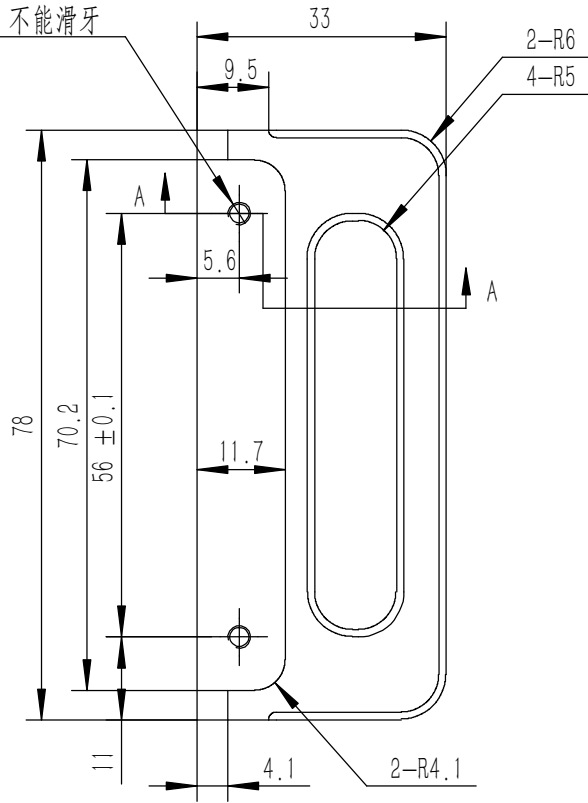
Tolerances (未注公差): 0.5 to 6 ± 0.1 6 to 30 ± 0.2 30 to 120 ± 0.3 120 to 400 ± 0.4	Material (材料): (装配图)	<b>YONGU</b> 永固	Drawing Number (图号):	
	Weight: (重量) (Kg): 0.069		YG-TY-A11-003	
Protection: (表面处理): 毛坯	Part Name (零/部件名称):	Size: (图幅): A2		Sheet (页数): 1 / 1
Angular tolerances (未注角度公差): <6° ± 10' <30° ± 20' <120° ± 30' >120° ± 1°	面板下固定件3	Scale (比例): 1:1		
Break sharp edges (未注锐边倒角): Ch 0.05 to 0.25 x45°	Drawn by (绘图): 许宏彬	Date (日期): 2020.09.18	Revision (版本): A1	
Position tolerances (未注位置公差): ±0.05	Check by (校对):	Date (日期):		
	Signature by (批准):	Date (日期):		



技术要求:  
 1、零件加工表面不应有划痕、擦伤等损伤零件表面的缺陷;  
 2、去除毛刺飞边,锐角倒钝;  
 3、未标注尺寸见3D数模。


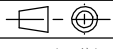
Tolerances (未注公差): 0.5 to 6 ± 0.1 6 to 30 ± 0.2 30 to 120 ± 0.3 120 to 400 ± 0.4	Material (材料):	5052-H32		<b>YONGU</b> 永固	
	Weight: (重量) (Kg):	0.571			
Break sharp edges (未注锐边倒角): Ch 0.05 to 0.25 x45°	Protection: (表面处理):			Drawing Number (图号): YG-TY-A12-009	
	Position tolerances (未注位置公差): ±0.05	Part Name (零/部件名称): 前后面板-2U			
Angular tolerances (未注角度公差): <6° ± 10' <30° ± 20' <120° ± 30' >120° ± 1°	Drawn by (绘图):	莫永康	Date (日期):	2020.05.18	Size (图幅): A2
	Check by (校对):		Date (日期):		
	Signature by (批准):		Date (日期):		Revision (版本): A1
					Sheet (页数): 1 / 1

2-M3  $\nabla$  5不能钻穿，不能滑牙

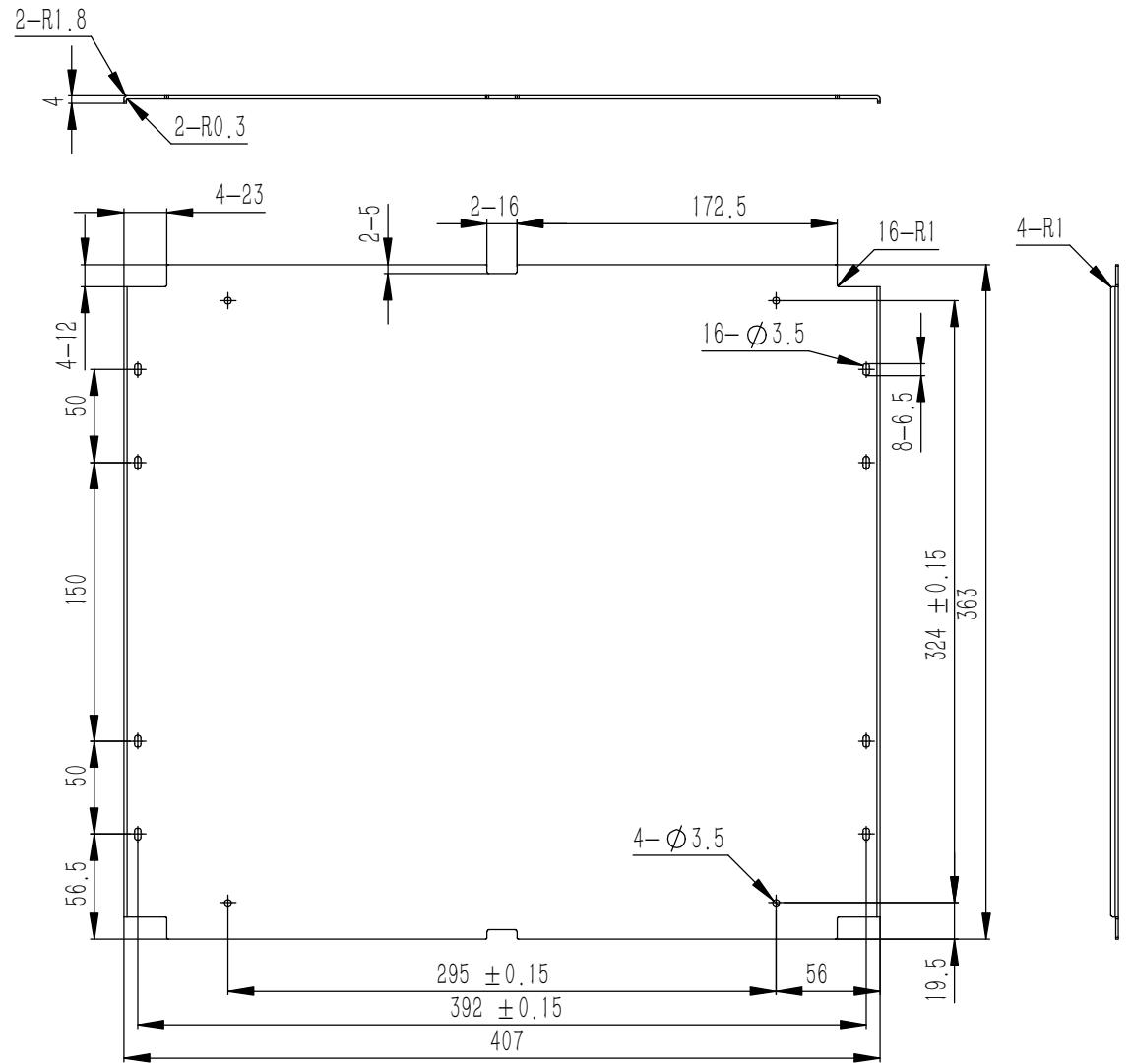
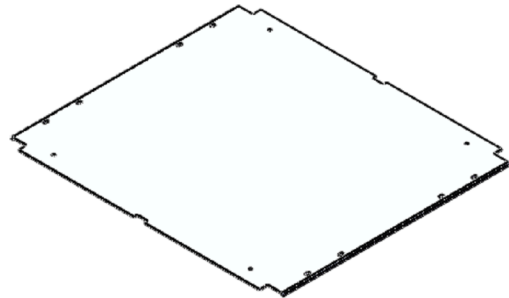
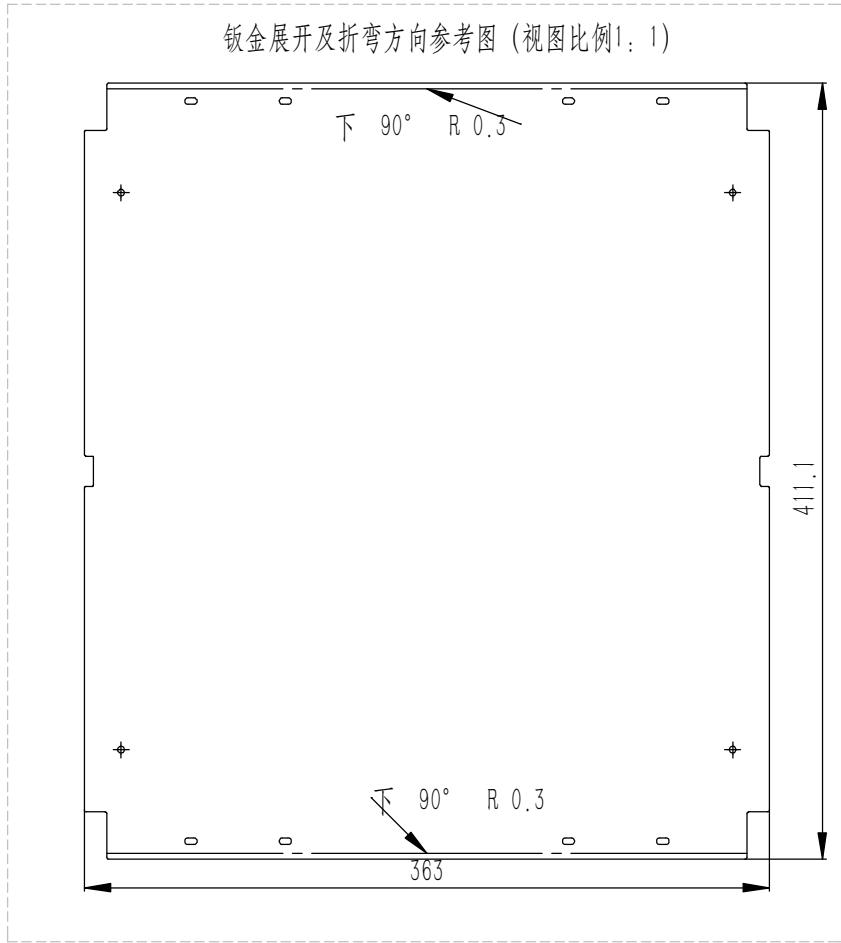


技术要求:

- 1、零件加工表面不应有划痕、擦伤等损伤零件表面的缺陷;
- 2、去除毛刺飞边，锐角倒钝;
- 3、未标注尺寸见3D数模。

Tolerances (未注公差): 0.5 to 6 ± 0.1 6 to 30 ± 0.2 30 to 120 ± 0.3 120 to 400 ± 0.4	Material (材料):	5052-H32		<b>YONGU</b> 
	Weight: (重量) (Kg)	0.036		
Break sharp edges (未注锐边倒角): Ch 0.05 to 0.25 x45°	Protection: (表面处理):			
	Position tolerances (未注位置公差): ± 0.05	Part Name (零/部件名称):	后防护条-2U	
Angular tolerances (未注角度公差): <6° ± 10' <30° ± 20' <120° ± 30' >120° ± 1°	Part Name (零/部件名称):	后防护条-2U		Drawing Number (图号):
	Drawn by (绘图): 邓展锋	Date (日期): 2020.05.16	Scale (比例): 1:1	Sheet (页数):  1 / 1
	Check by (校对):	Date (日期):	Revision (版本): A1	
	Signature by (批准):	Date (日期):		

钣金展开及折弯方向参考图 (视图比例1:1)



业务代码:

技术要求:

- 1、零件加工表面不应有划痕、擦伤等损伤零件表面的缺陷;
- 2、去除毛刺飞边, 锐角倒钝;
- 3、未标注尺寸见3D数模。

Break sharp edges (未注锐边倒角): Ch 0.05 to 0.25 x45°	Angular tolerances (未注角度公差): <6° ± 10' <30° ± 20' <120° ± 30' >120° ± 1°
Position tolerances (未注位置公差): ± 0.05	

Tolerances (未注公差): 0.5 to 6 ± 0.1 6 to 30 ± 0.2 30 to 120 ± 0.3 120 to 400 ± 0.4	Material (材料): 5052-H32	<b>YONGU</b> 永固	Drawing Number (图号): YG-TY-A13-011		
Weight: (重量) (Kg): 0.594	Protection: (表面处理):		Size (图幅): A0	Sheet (页数): 1 / 1	
Part Name (零/部件名称): A垫板	Part Name (零/部件名称):		Scale (比例): 1:1	Revision (版本): A1	
Drawn by (绘图): 许宏彬	Date (日期): 2020.09.17	Check by (校对):	Date (日期):	Signature by (批准):	Date (日期):