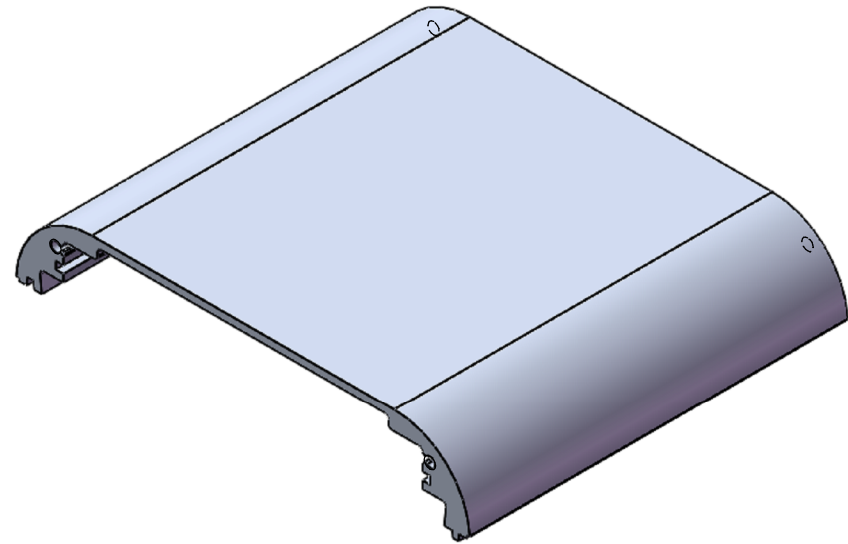
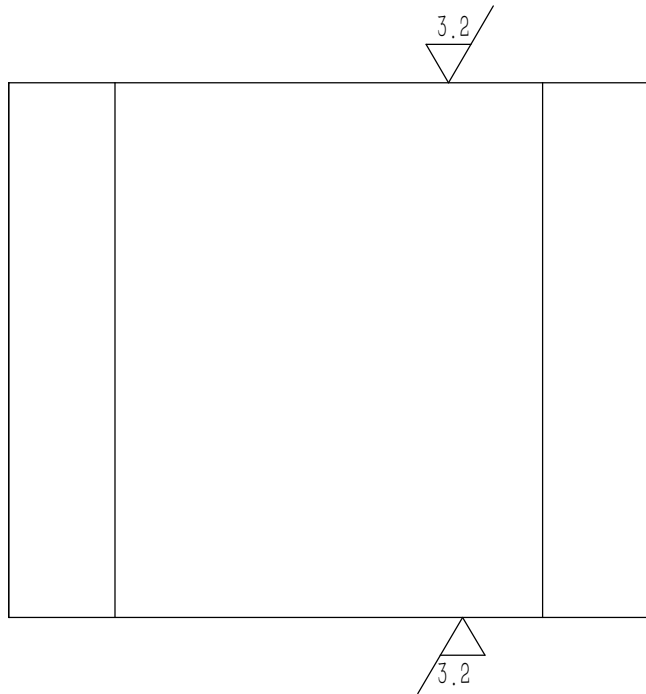
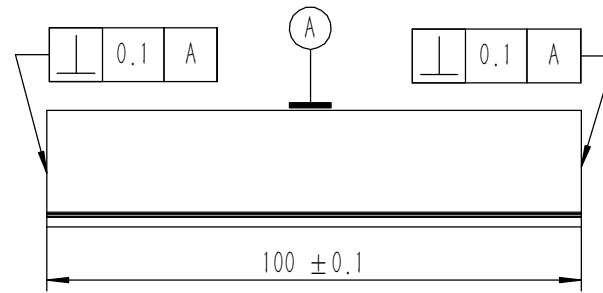
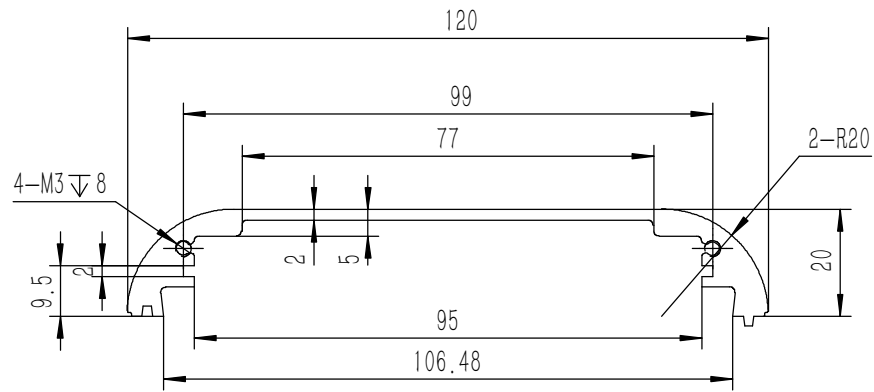


技术要求:

- 1、必须按照设计、工艺要求及本规定和有关标准进行装配;
- 2、所有零部件(包括外购、外协件)必须具有检验合格证方能进行装配;
- 3、零件在装配前必须清理和清洗干净,不得有毛刺、飞边、氧化皮、锈蚀、切屑、砂粒、灰尘和油污等,并应符合相应清洁度要求;
- 4、装配过程中零件不得磕碰、划伤和锈蚀;
- 5、油漆未干的零件不得进行装配;
- 6、相对运动的零件,装配时接触面间应加润滑油脂;
- 7、各零、部件装配后相对位置应准确。

| 8 | GB-T-819.1-2000-C-BE-M2.5X6 | 碳钢发黑十字沉头螺丝M2.5X6 | 普通碳钢 | 2 | 0.000 | |
|----|-----------------------------|------------------|----------|----|--------|----|
| 7 | GB-T-819.1-2000-C-BE-M3X6 | 碳钢发黑十字沉头螺丝M3X6 | 普通碳钢 | 4 | 0.0004 | |
| 6 | GB-T-819.1-2000-C-BE-M3X8 | 碳钢发黑十字沉头螺丝M3X8 | 普通碳钢 | 4 | 0.0005 | |
| 5 | YG-W28C-0000-005 | 机脚 | 5052-H32 | 4 | 0.004 | |
| 4 | YG-W28C-0000-004 | 后面板 | 5052-H32 | 1 | 0.024 | |
| 3 | YG-W28C-0000-003 | 前面板 | 5052-H32 | 1 | 0.056 | |
| 2 | YG-W28C-0000-002 | 下壳体 | 6063-T5 | 1 | 0.130 | |
| 1 | YG-W28C-0000-001 | 上壳体 | 6063-T5 | 1 | 0.131 | |
| 序号 | 图号 | 名称 | 材料 | 数量 | 单重 | 备注 |

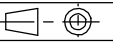
| | | | | |
|---|---|-----------------------|------------------|-------------------|
| Tolerances (未注公差): 0.5 to 6 ± 0.1 6 to 30 ± 0.2 30 to 120 ± 0.3 120 to 400 ± 0.4 | Material (材料): | (装配图) | | YONGU 永固 |
| | Weight: (重量) (Kg) | 0.361 | | |
| Break sharp edges (未注锐边倒角): Ch 0.05 to 0.25 x45° | Protection: (表面处理): | W28C功放 | | |
| | Part Name (零/部件名称): | | | |
| Angular tolerances (未注角度公差): <6° ± 10' <30° ± 20' <120° ± 30' >120° ± 1° | Position tolerances (未注位置公差): ±0.05 | Drawing Number (图号): | YG-W28C-0000-000 | |
| | Drawn by (绘图): 邓展锋 | Date (日期): 2020.05.15 | Size (图幅): A3 | Sheet (页数): 1 / 1 |
| Check by (校对): | Date (日期): | Scale (比例): 1:1 | | |
| Signature by (批准): | Date (日期): | Revision (版本): A1 | | |



技术要求:

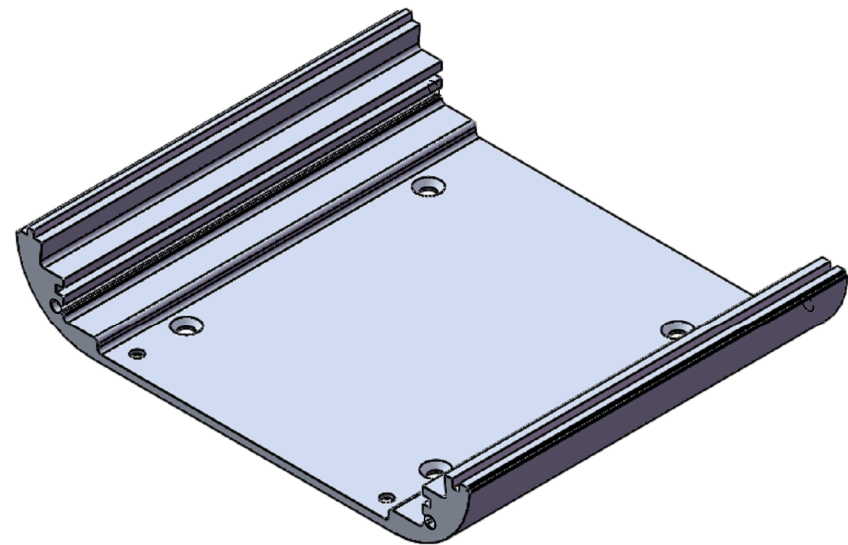
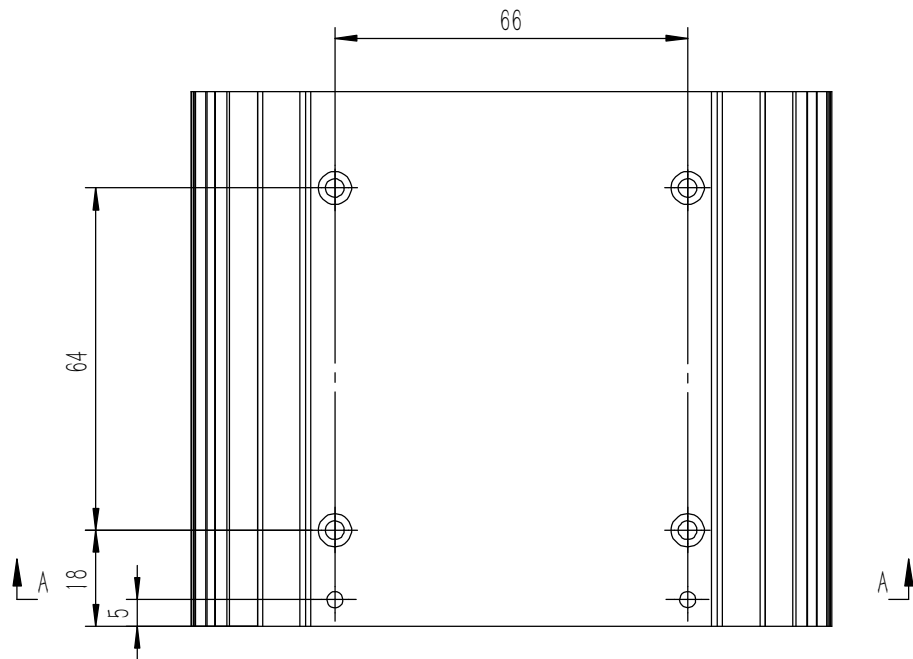
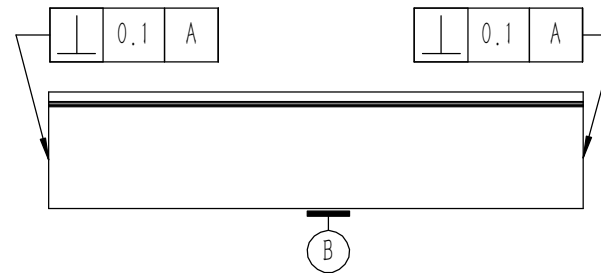
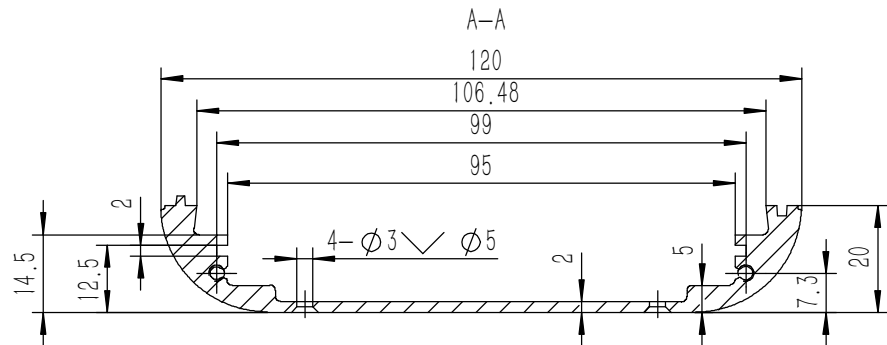
- 1、零件加工表面不应有划痕、擦伤等损伤零件表面的缺陷;
- 2、去除毛刺飞边, 锐角倒钝;
- 3、未标注尺寸见3D数模。

| | | | |
|---|---|----------------------------|--|
| Tolerances (未注公差): 0.5 to 6 ± 0.1 6 to 30 ± 0.2 30 to 120 ± 0.3 120 to 400 ± 0.4 | Material (材料): | 6063-T5 | YONGU 永固 |
| | Weight: (重量) (Kg) | 0.131 | |
| Break sharp edges (未注锐边倒角): Ch 0.05 to 0.25 x45° | Protection: (表面处理): | | Drawing Number (图号): YG-W28C-0000-001 |
| | Position tolerances (未注位置公差): ±0.05 | Part Name (零/部件名称): 上壳体 | |
| Angular tolerances (未注角度公差): <6° ± 10' <30° ± 20' <120° ± 30' >120° ± 1° | Drawn by (绘图): 邓展锋 | Date (日期): 2020.05.15 | Size (图幅): A3 |
| | Check by (校对): | Date (日期): | Scale (比例): 1:1 |
| | Signature by (批准): | Date (日期): | Revision (版本): A1 |



Sheet (页数):

1 / 1

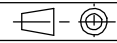


技术要求:

- 1、零件加工表面不应有划痕、擦伤等损伤零件表面的缺陷;
- 2、去除毛刺飞边, 锐角倒钝;
- 3、未标注尺寸见3D数模。

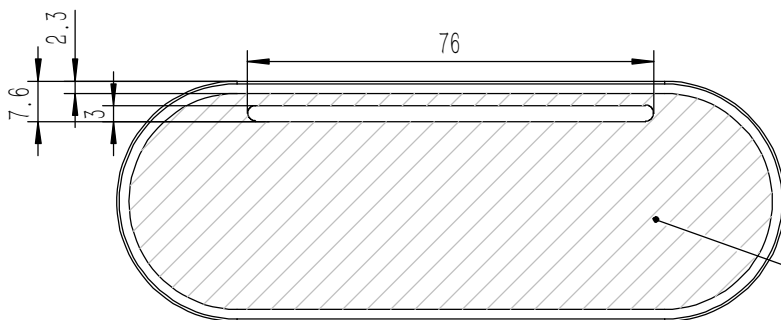
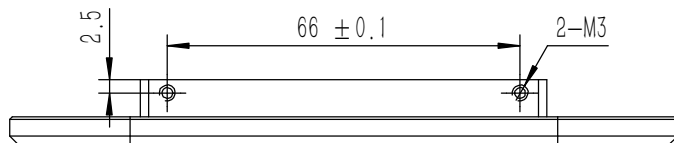
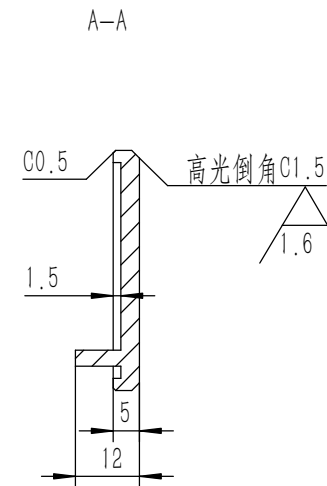
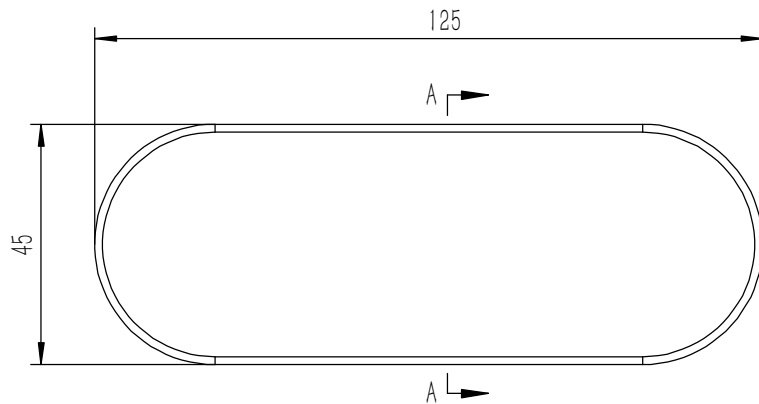
| | |
|--|---|
| Break sharp edges (未注锐边倒角): Ch 0.05 to 0.25 x45° | Angular tolerances (未注角度公差): <6° ± 10' <30° ± 20' <120° ± 30' >120° ± 1° |
| Position tolerances (未注位置公差): ±0.05 | |

| | | |
|---|-------------------------|---------------------------------------|
| Tolerances (未注公差): 0.5 to 6 ± 0.1 6 to 30 ± 0.2 30 to 120 ± 0.3 120 to 400 ± 0.4 | Material (材料): 6063-T5 | YONGU 永固 |
| | Weight: (重量) (Kg) 0.130 | |
| Protection: (表面处理): | Part Name (零/部件名称): 下壳体 | Drawing Number (图号): YG-W28C-0000-002 |
| Drawn by (绘图): 邓展锋 | Date (日期): 2020.05.15 | Size (图幅): A3 |
| Check by (校对): | Date (日期): | Scale (比例): 1:1 |
| Signature by (批准): | Date (日期): | Revision (版本): A1 |

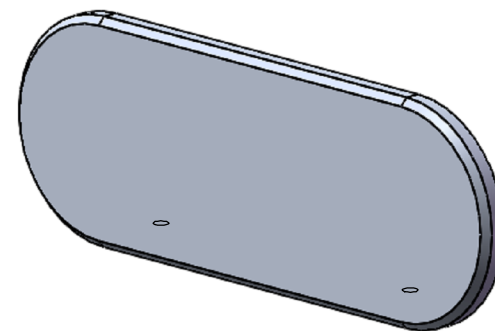


Sheet (页数):

1 / 1



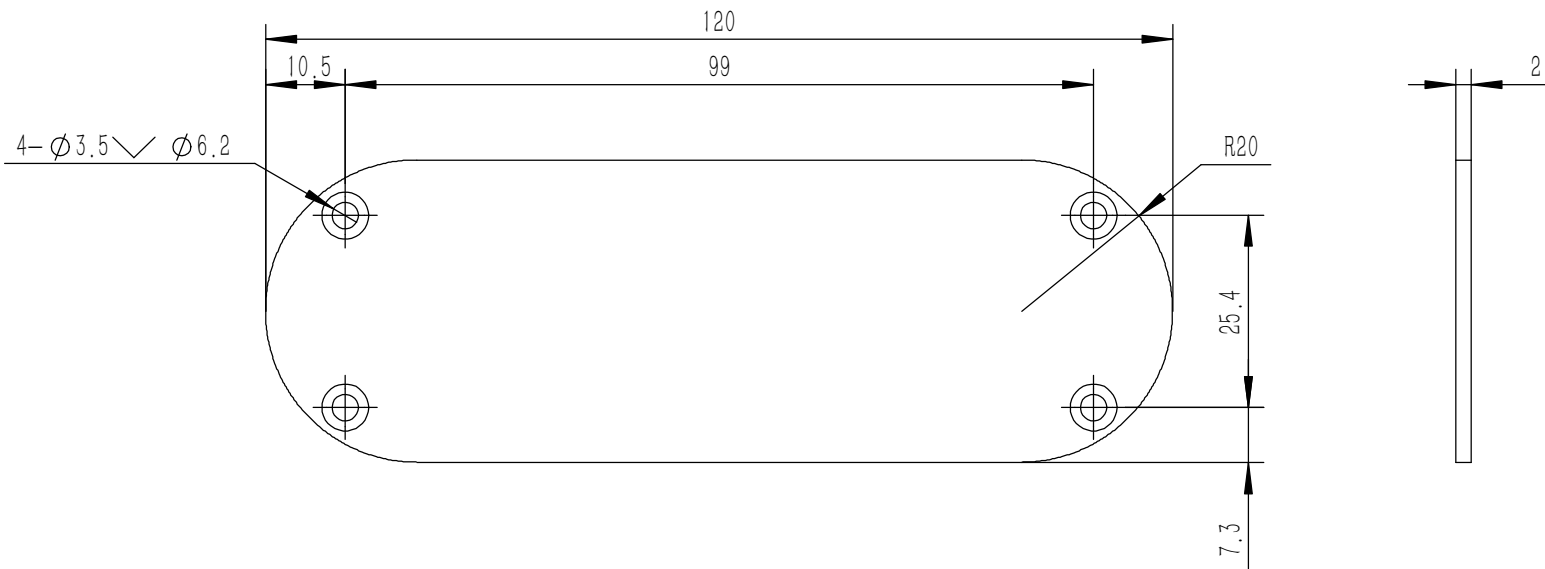
阴影部分铣低1.5MM



技术要求:

- 1、零件加工表面不应有划痕、擦伤等损伤零件表面的缺陷;
- 2、去除毛刺飞边, 锐角倒钝;
- 3、未标注尺寸见3D数模。

| | | | | |
|---|---|--------------------|-----------------------|--|
| Tolerances (未注公差): 0.5 to 6 ± 0.1 6 to 30 ± 0.2 30 to 120 ± 0.3 120 to 400 ± 0.4 | Material (材料): | 5052-H32 | | YONGU 永固 |
| | Weight: (重量) (Kg): | 0.056 | | |
| Break sharp edges (未注锐边倒角): Ch 0.05 to 0.25 x45° | Protection: (表面处理): | | | Drawing Number (图号): YG-W28C-0000-003 |
| | Part Name (零/部件名称): | 前面板 | | |
| Position tolerances (未注位置公差): ±0.05 | Angular tolerances (未注角度公差): <6° ± 10' <30° ± 20' <120° ± 30' >120° ± 1° | Drawn by (绘图): 邓展锋 | Date (日期): 2020.05.15 | Size (图幅): A3 |
| | | Check by (校对): | Date (日期): | Scale (比例): 1:1 |
| | | Signature by (批准): | Date (日期): | Revision (版本): A1 |
| | | | | Sheet (页数): 1 / 1 |

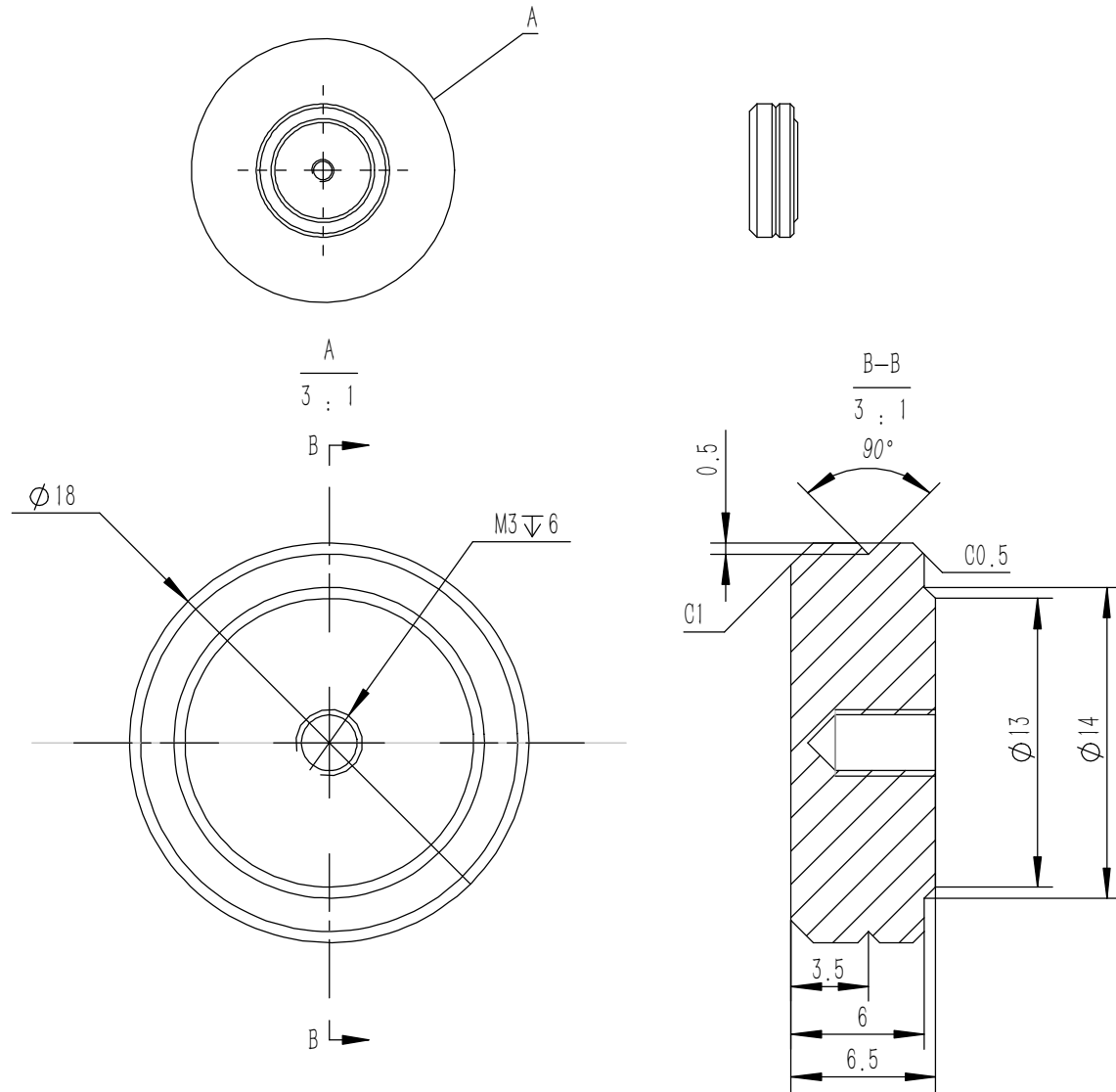


技术要求:

- 1、零件加工表面不应有划痕、擦伤等损伤零件表面的缺陷;
- 2、去除毛刺飞边, 锐角倒钝;
- 3、未标注尺寸见3D数模。

| | | | |
|---|--|-----------------------|----------------------|
| Tolerances (未注公差): 0.5 to 6 ± 0.1 6 to 30 ± 0.2 30 to 120 ± 0.3 120 to 400 ± 0.4 | Material (材料): | 5052-H32 | |
| | Weight: (重量) (Kg) | 0.024 | |
| Break sharp edges (未注锐边倒角): Ch 0.05 to 0.25 x45° | Protection: (表面处理): | | |
| | Position tolerances (未注位置公差): ± 0.05 | Part Name (零/部件名称): | |
| Angular tolerances (未注角度公差): <6° ± 10' <30° ± 20' <120° ± 30' >120° ± 1° | 后面板 | | Drawing Number (图号): |
| | Drawn by (绘图): 邓展锋 | Date (日期): 2020.05.15 | YG-W28C-0000-004 |
| Check by (校对): | | Date (日期): | Scale (比例): 1:1 |
| Signature by (批准): | | Date (日期): | Revision (版本): A1 |
| | | | Sheet (页数): 1 / 1 |

YONGU 永固



技术要求:

- 1、零件加工表面不应有划痕、擦伤等损伤零件表面的缺陷;
- 2、去除毛刺飞边, 锐角倒钝;
- 3、未标注尺寸见3D数模。

| | | | |
|---|--|---------------------|-----------------------|
| Tolerances (未注公差): 0.5 to 6 ± 0.1 6 to 30 ± 0.2 30 to 120 ± 0.3 120 to 400 ± 0.4 | Material (材料): | 5052-H32 | |
| | Weight: (重量) (Kg) | 0.004 | |
| Break sharp edges (未注锐边倒角): Ch 0.05 to 0.25 x45° | Protection: (表面处理): | | |
| | Position tolerances (未注位置公差): ± 0.05 | Part Name (零/部件名称): | 机脚 |
| Angular tolerances (未注角度公差): <6° ± 10' <30° ± 20' <120° ± 30' >120° ± 1° | Drawn by (绘图): | 邓展锋 | Date (日期): 2020.05.15 |
| | | Check by (校对): | Date (日期): |
| | Signature by (批准): | Date (日期): | Revision (版本): A1 |
| | | Scale (比例): 1:1 | Sheet (页数): 1 / 1 |

YONGU 永固

Drawing Number (图号):
YG-W28C-0000-005

