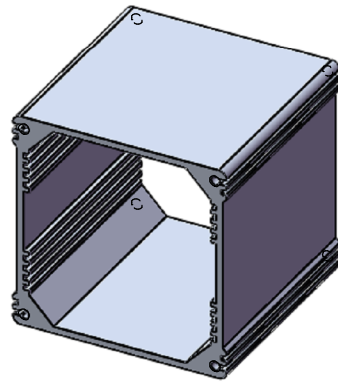
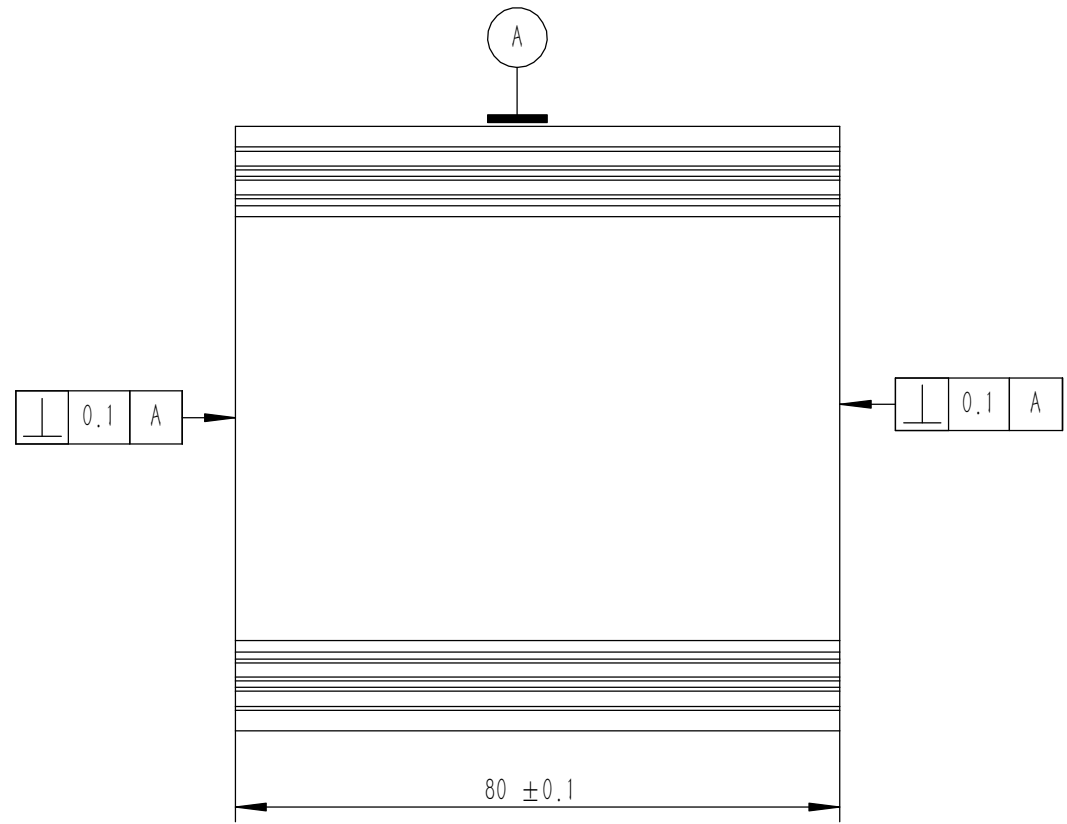
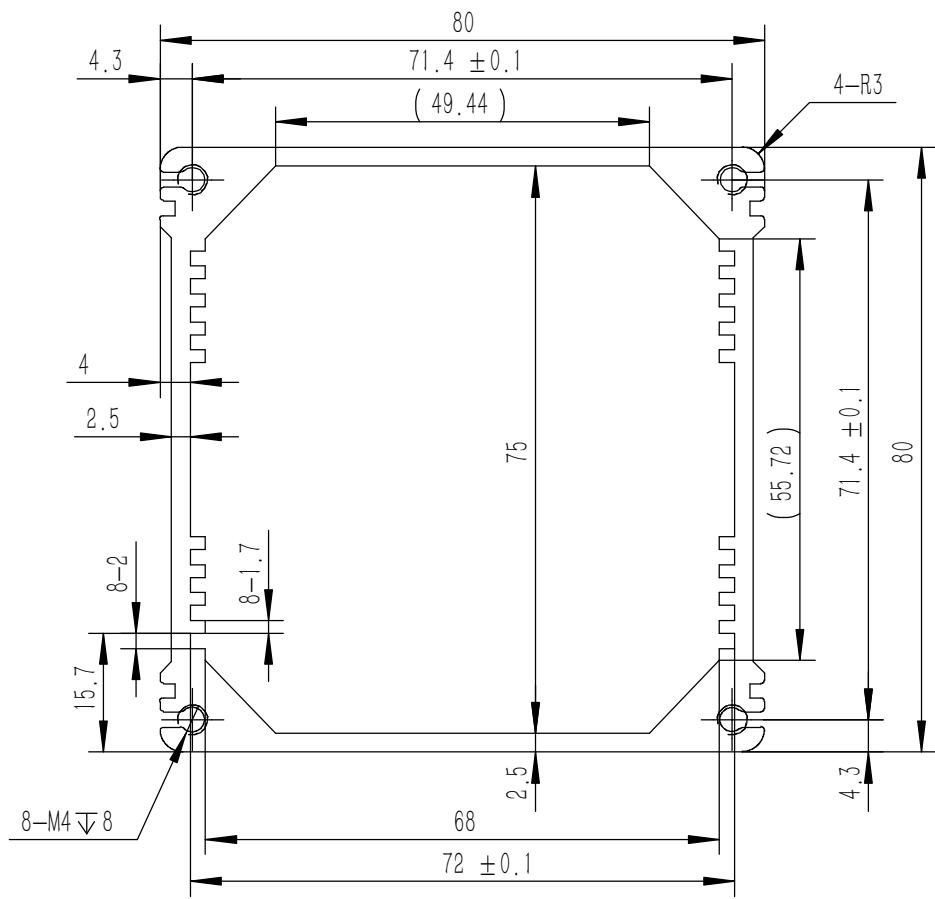


5	DIN7985-1990-S-NL-M4X12	不锈钢球面圆柱头螺丝M4X12	SUS 304	8	0.002	
4	YG-M02A-0000-004	点胶密封圈	复合发泡胶	2	0.003	
3	YG-M02-0000-003	支脚	SUS 304	2	0.025	
2	YG-M02-0000-002	端盖	ADC12	2	0.105	
1	YG-M02-0000-001	壳体	6063-T5	1	0.232	
序号	图号	名称	材料	数量	单重	备注

技术要求:

- 1、必须按照设计、工艺要求及本规定和有关标准进行装配;
- 2、所有零部件(包括外购、外协件)必须具有检验合格证方能进行装配;
- 3、零件在装配前必须清理和清洗干净,不得有毛刺、飞边、氧化皮、锈蚀、切屑、砂粒、灰尘和油污等,并应符合相应清洁度要求;
- 4、装配过程中零件不得磕碰、划伤和锈蚀;
- 5、油漆未干的零件不得进行装配;
- 6、相对运动的零件,装配时接触面间应加润滑油脂;
- 7、各零、部件装配后相对位置应准确。

Tolerances (未注公差): 0.5 to 6 ± 0.1 6 to 30 ± 0.2 30 to 120 ± 0.3 120 to 400 ± 0.4	Material (材料): (装配图)	<b>YONGU</b> 永固	Drawing Number (图号): YG-M02-0000-000
	Weight: (重量) (Kg): 0.515		
Break sharp edges (未注锐边倒角): Ch 0.05 to 0.25 x45°	Angular tolerances (未注角度公差): <6° ± 10' <30° ± 20' <120° ± 30' >120° ± 1°	Part Name (零/部件名称): M02防水壳体	
Position tolerances (未注位置公差): ±0.05	Protection: (表面处理): Part Name (零/部件名称):	Drawn by (绘图): 陈家俊 Check by (校对): Signature by (批准):	Date (日期): 2018.11.15 Date (日期): Date (日期):
		Size (图幅): A2 Scale (比例): 1:1 Revision (版本): A1	Sheet (页数): 1 / 1

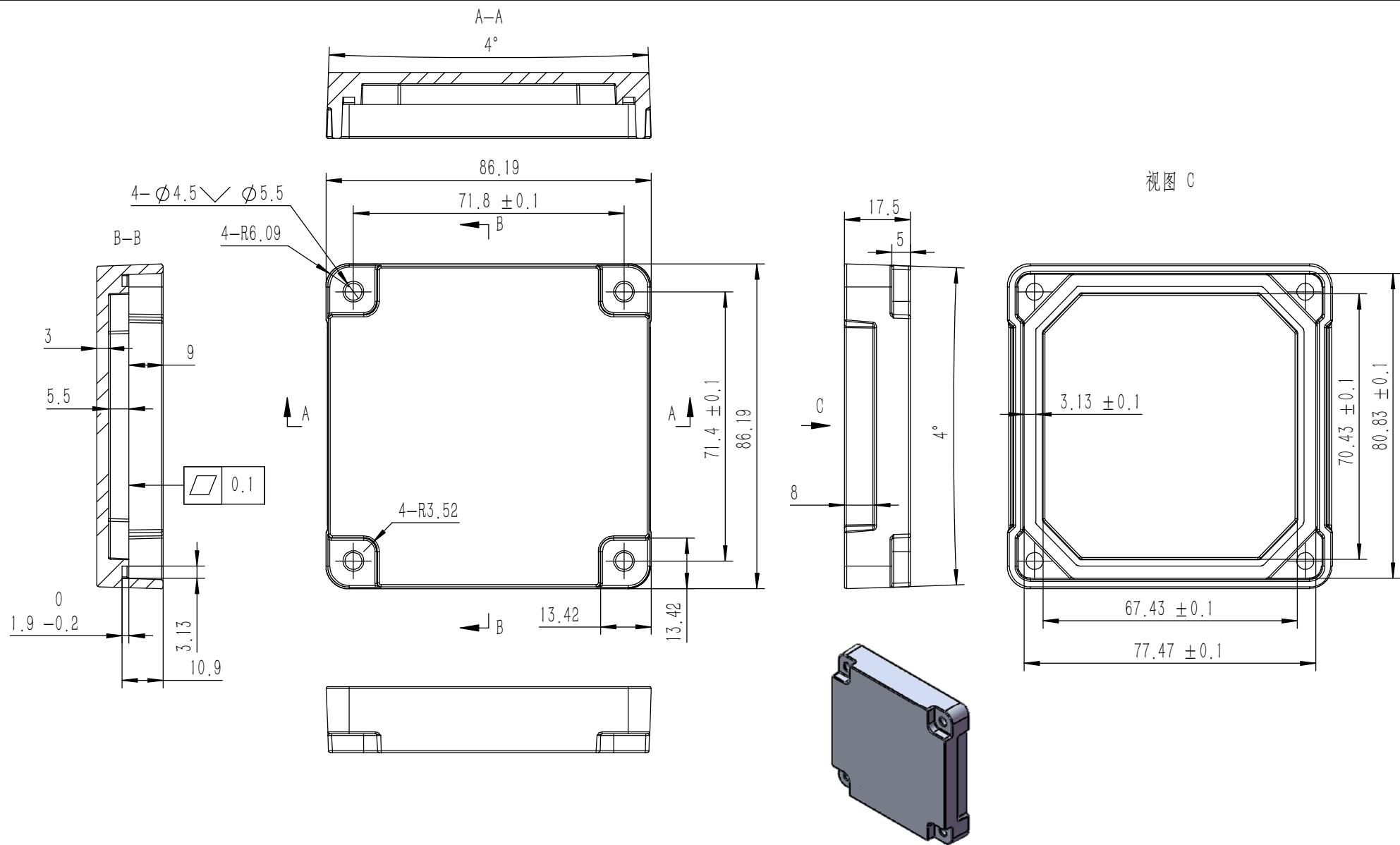


技术要求:

- 1、零件加工表面不应有划痕、擦伤等损伤零件表面的缺陷;
- 2、去除毛刺飞边, 锐角倒钝;
- 3、未标注尺寸见3D数模。

Break sharp edges (未注锐边倒角): Ch 0.05 to 0.25 x45°	Angular tolerances (未注角度公差): <6° ± 10' <30° ± 20' <120° ± 30' >120° ± 1°
Position tolerances (未注位置公差): ±0.05	

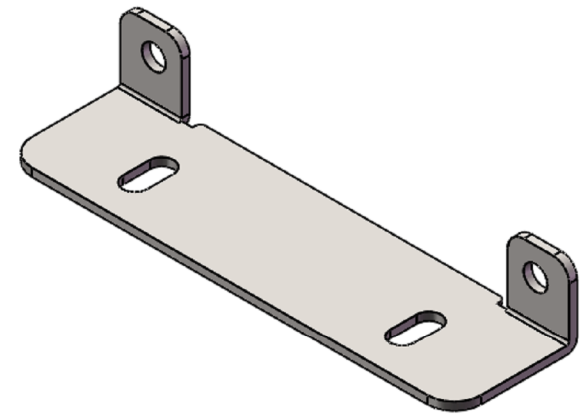
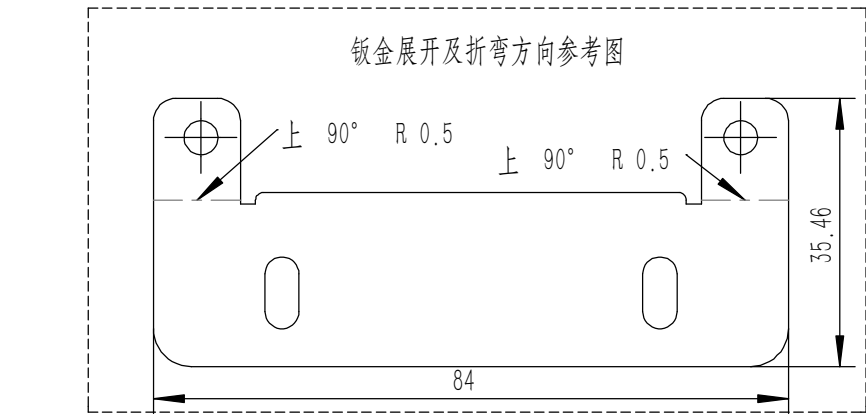
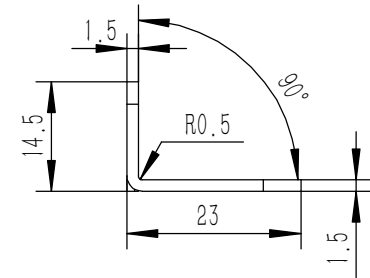
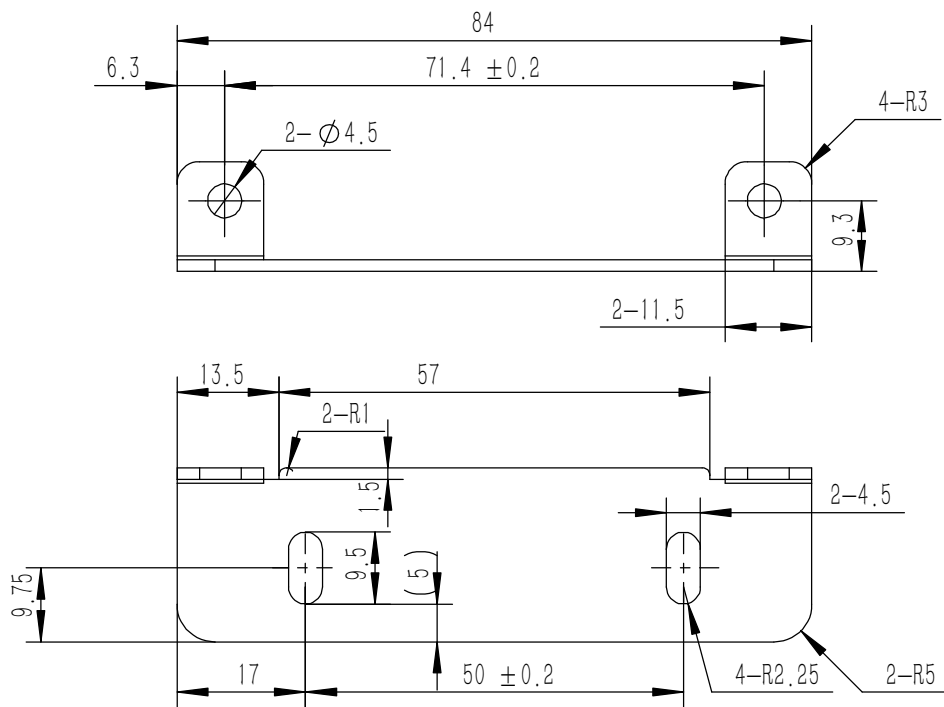
Tolerances (未注公差): 0.5 to 6 ± 0.1 6 to 30 ± 0.2 30 to 120 ± 0.3 120 to 400 ± 0.4	Material (材料): 6063-T5	YONGU 永固
Weight: (重量) (Kg) 0.232	Protection: (表面处理):	
Part Name (零/部件名称):	壳体	Drawing Number (图号): YG-M02-0000-001
Drawn by (绘图): 陈家俊	Date (日期): 2018.11.15	Size: (图幅): A4
Check by (校对):	Date (日期):	Scale (比例): 1:1
Signature by (批准):	Date (日期):	Revision (版本): A1
		Sheet (页数): 1 / 1



技术要求:

- 1、零件加工表面不应有划痕、擦伤等损伤零件表面的缺陷;
- 2、去除毛刺飞边, 锐角倒钝;
- 3、未标注尺寸见3D数模。

Tolerances (未注公差):	0.5 to 6	± 0.1	Material (材料):	ADC12	YONGU 永固				
	6 to 30	± 0.2	Weight: (重量) (Kg)	0.105					
	30 to 120	± 0.3	Protection: (表面处理):	喷涂黑色	Drawing Number (图号): YG-M02-0000-002				
	120 to 400	± 0.4	Part Name (零/部件名称):	端盖					
Break sharp edges (未注锐边倒角): Ch 0.05 to 0.25 x45°	Angular tolerances (未注角度公差):	<6° ± 10'	Drawn by (绘图):	陈家俊	Date (日期):	2018.11.15	Size (图幅):	A3	Sheet (页数): 1 / 1
Position tolerances (未注位置公差): ±0.05	<30° ± 20'	<120° ± 30'	Check by (校对):		Date (日期):		Scale (比例):	1:1	
	>120° ± 1°		Signature by (批准):		Date (日期):		Revision (版本):	A1	



技术要求:  
 1、零件加工表面不应有划痕、擦伤等损伤零件表面的缺陷;  
 2、去除毛刺飞边, 锐角倒钝;  
 3、未标注尺寸见3D数模。

Tolerances (未注公差): 0.5 to 6 ± 0.1 6 to 30 ± 0.2 30 to 120 ± 0.3 120 to 400 ± 0.4	Material (材料):	SUS 304	
	Weight: (重量) (Kg)	0.025	
Break sharp edges (未注锐边倒角): Ch 0.05 to 0.25 x45°	Protection: (表面处理):		
	Position tolerances (未注位置公差): ±0.05	Part Name (零/部件名称):	支脚
Angular tolerances (未注角度公差): <6° ± 10' <30° ± 20' <120° ± 30' >120° ± 1°	Part Name (零/部件名称):	支脚	
	Drawn by (绘图): 陈家俊	Date (日期): 2018.11.15	Drawing Number (图号): YG-M02-0000-003
	Check by (校对):	Date (日期):	Size: (图幅): A4
	Signature by (批准):	Date (日期):	Scale (比例): 1:1
			Revision (版本): A1
			Sheet (页数): 1 / 1

