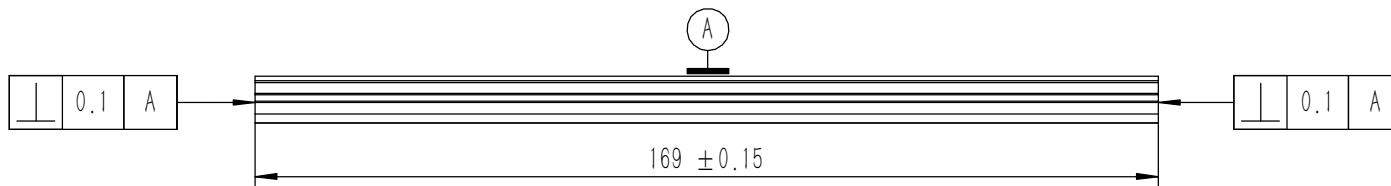
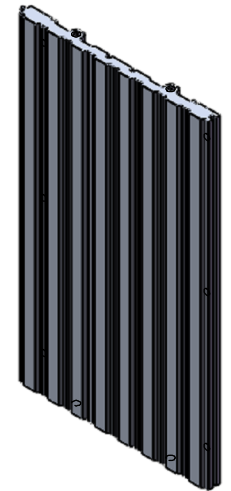
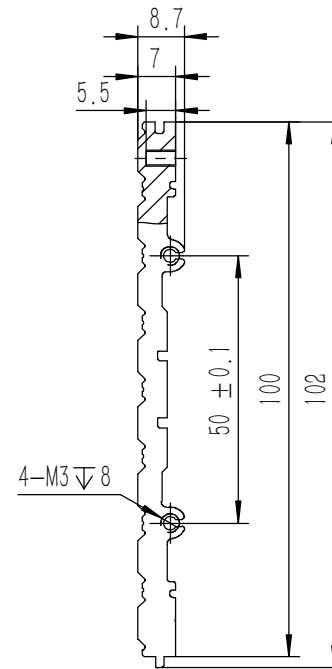
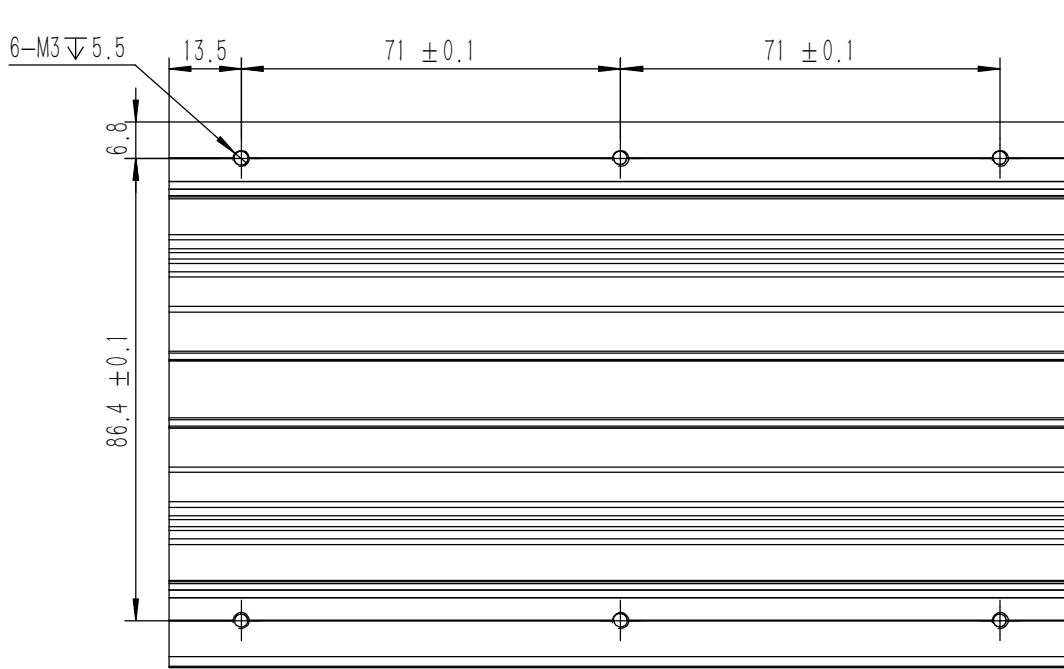


技术要求:

- 1、必须按照设计、工艺要求及本规定和有关标准进行装配;
- 2、所有零部件(包括外购、外协件)必须具有检验合格证书方能进行装配;
- 3、零件在装配前必须清理和清洗干净,不得有毛刺、飞边、氧化皮、锈蚀、切屑、砂粒、灰尘和油污等,并应符合相应清洁度要求;
- 4、装配过程中零件不得磕碰、划伤和锈蚀;
- 5、油漆未干的零件不得进行装配;
- 6、相对运动的零件,装配时接触面间应加润滑油脂;
- 7、各零、部件装配后相对位置应准确。

21	GB-T-973-1976-C-NI-M3X6	碳钢镀镍十字大扁头螺丝M3X6	普通碳钢	12	0.0006	
20	DIN-9250-S-NL-M3	不锈钢防松垫圈	SUS 304	12	0.000	
19	YG-TY-A13-007	A垫板	5052-H32	1	0.410	
18	YG-TY-XJD-001	自粘胶垫35X11X3	硅橡胶	8	0.0013	
17	GB-T-70_3-2000-C-NI-M3X6	芳生镀白镍内六角沉头螺丝M3X6	普通碳钢	8	0.0004	
16	YG-TY-A12-008	前后面板-4U	5052-H32	2	0.933	
15	YG-TY-A07-004	后防护条-4U	5052-H32	2	0.072	
14	YG-TY-A11-002	面板下固定件2	电解板	2	0.056	
13	GB-T-973-1976-C-NI-M3X12	碳钢镀镍十字大扁头螺丝M3X12	普通碳钢	16	0.001	
12	S-M3-1-ZI	压铆螺母镀锌M3X1	普通碳钢	8	0.3750	
11	BSO-M3-5-ZI-D5_4	压铆螺柱 M3X5	普通碳钢	8	0.001	
10	YG-TY-B05-002	B包角2	6063-T5	4	0.035	
9	YG-TY-B01-007	上下盖板	5052-H32	1	0.735	
8	GB-T-973-1976-C-NI-M3X4	碳钢镀镍十字大扁头螺丝M3X4	普通碳钢	54	0.0005	
7	YG-TY-A06-004	拉手-4U	6063-T5	2	0.145	
6	YG-TY-A10-002	面板上固定件2	电解板	2	0.049	
5	YG-TY-B05-001	B包角1	6063-T5	4	0.035	
4	YG-TY-A08-004	A侧板固定件 4U	6063-T5	4	0.065	
3	YG-TY-B02-007	上盖板	5052-H32	1	0.706	
2	YG-TY-A09-004	侧板连接件	电解板	4	0.044	
1	YG-TY-B03-004	B组合侧板	6063-T5	6	0.248	
序号	图号	名称	材料	数量	单重	备注

Tolerances (未注公差):		Material (材料): (装配图)			
0.5 to 6 ± 0.1		Weight: (重量) (Kg): 6.634			
6 to 30 ± 0.2		Protection: (表面处理):			
30 to 120 ± 0.3		Part Name (零/部件名称):		Drawing Number (图号):	
120 to 400 ± 0.4		B08机箱		YG-B08-1000-000	
Break sharp edges (未注锐边倒角): Ch 0.05 to 0.25 x45°		Angular tolerances (未注角度公差):		Drawn by (绘图): 邓展锋	
<6° ± 10'		<30° ± 20'		Date (日期): 2020.05.22	
<120° ± 30'		>120° ± 1°		Check by (校对):	
Position tolerances (未注位置公差): ± 0.05		Signature by (批准):		Date (日期):	
				Size (图幅): A0	
				Scale (比例): 1:1.35	
				Sheet (页数):	
				Revision (版本): A1	
				1 / 1	

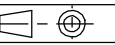


技术要求:

- 1、零件加工表面不应有划痕、擦伤等损伤零件表面的缺陷;
- 2、去除毛刺飞边,锐角倒钝;
- 3、未标注尺寸见3D数模。

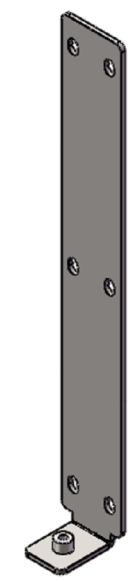
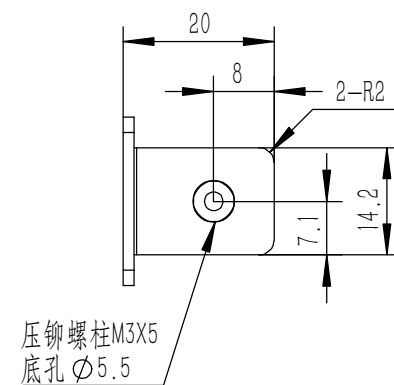
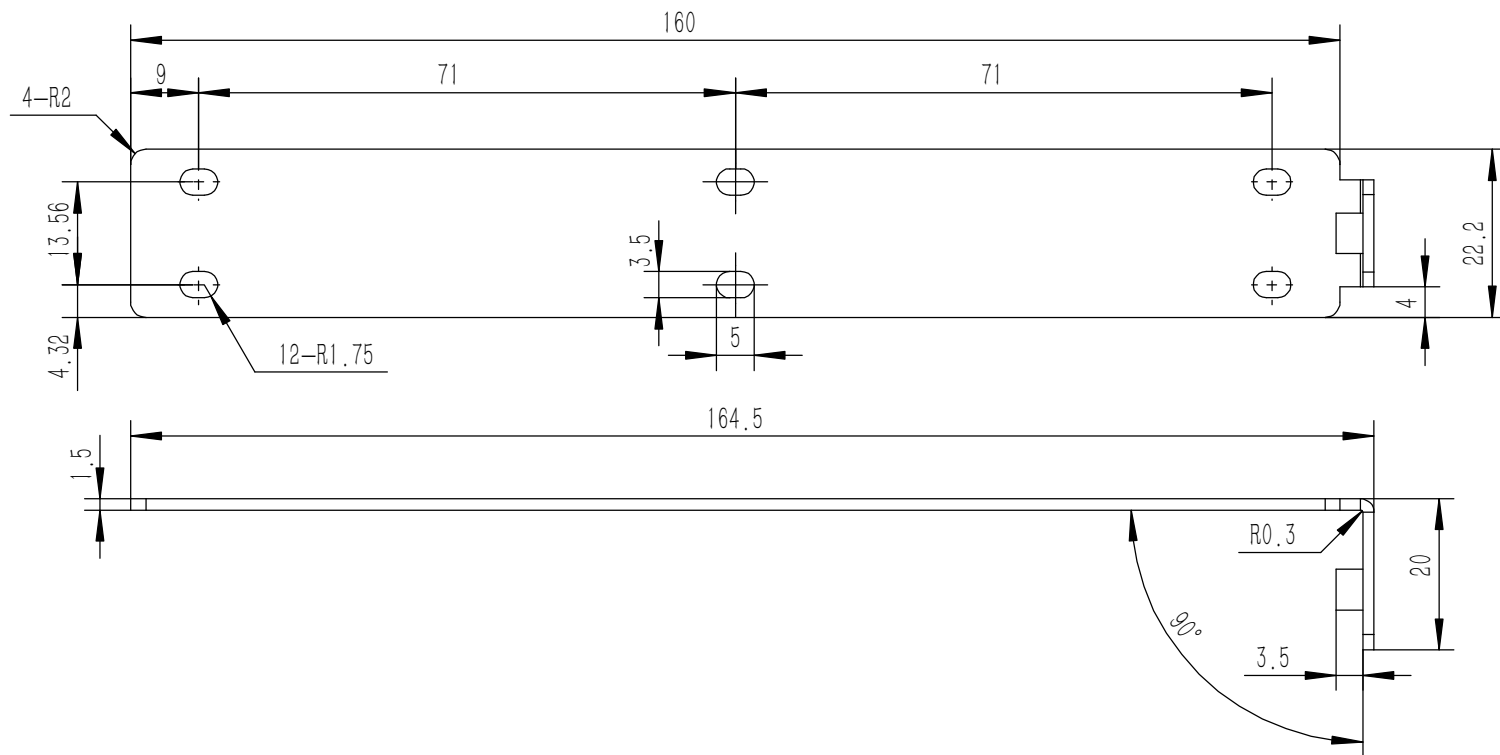
Tolerances (未注公差): 0.5 to 6 ± 0.1 6 to 30 ± 0.2 30 to 120 ± 0.3 120 to 400 ± 0.4	Material (材料):	6063-T5	
	Weight: (重量) (Kg)	0.248	
Break sharp edges (未注锐边倒角): Ch 0.05 to 0.25 x45°	Protection: (表面处理):		
	Part Name (零/部件名称):	B组合侧板	
Angular tolerances (未注角度公差): <6° ± 10' <30° ± 20' <120° ± 30' >120° ± 1°	Position tolerances (未注位置公差): ±0.05	Part Name (零/部件名称):	B组合侧板
	Signature by (批准):	Date (日期):	
	Drawn by (绘图): 邓展锋	Date (日期): 2020.05.19	Drawing Number (图号): YG-TY-B03-004
	Check by (校对):	Date (日期):	Size (图幅): A3
	Signature by (批准):	Date (日期):	Scale (比例): 1:1
			Revision (版本): A1

**YONGU** 永固

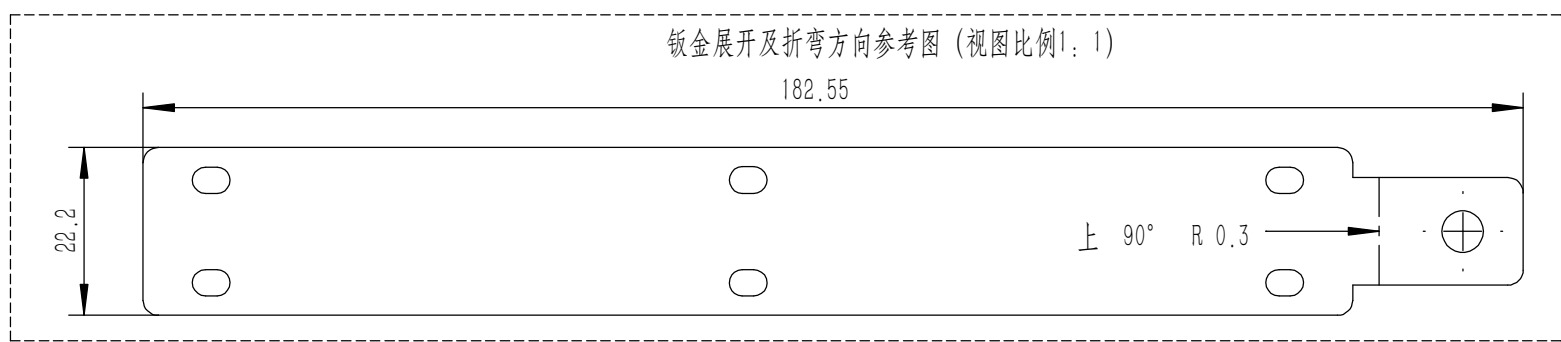


Sheet (页数):

1 / 1

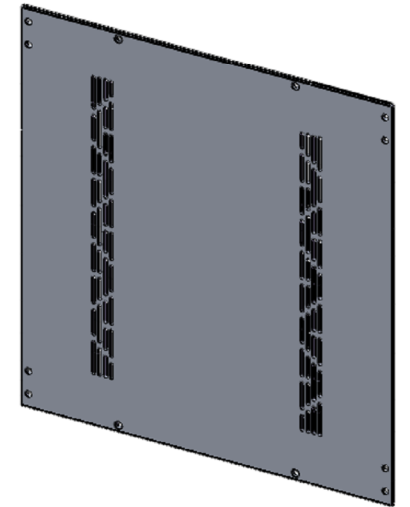
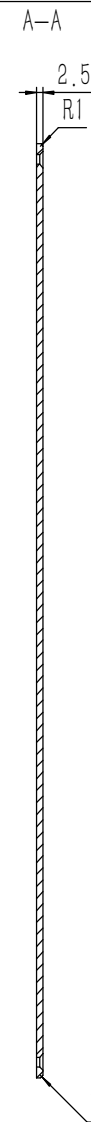
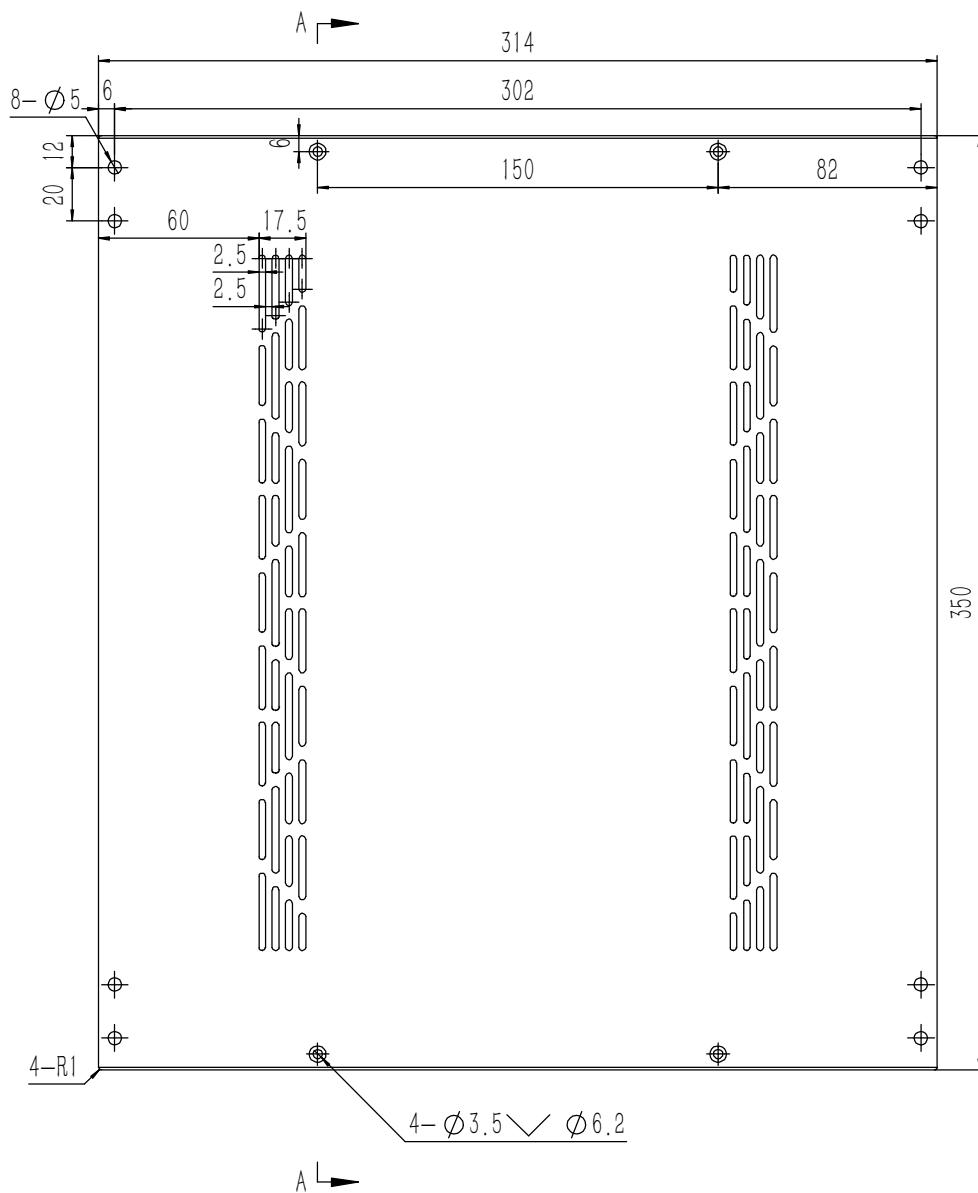


钣金展开及折弯方向参考图 (视图比例1:1)



技术要求:  
 1、零件加工表面不应有划痕、擦伤等损伤零件表面的缺陷;  
 2、去除毛刺飞边,锐角倒钝;  
 3、未标注尺寸见3D数模。

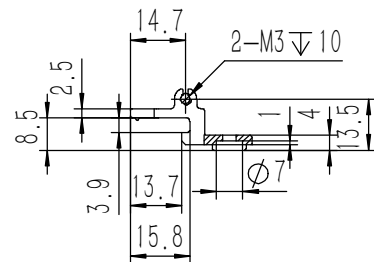
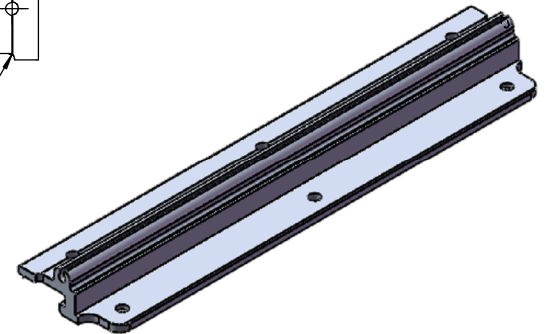
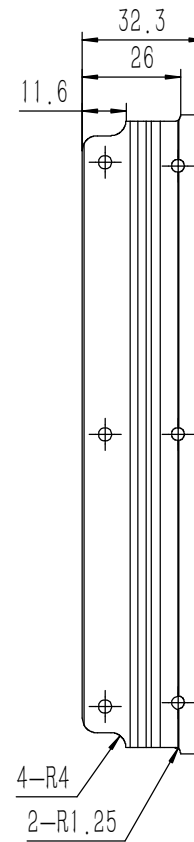
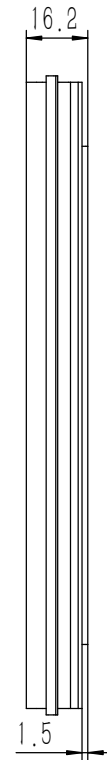
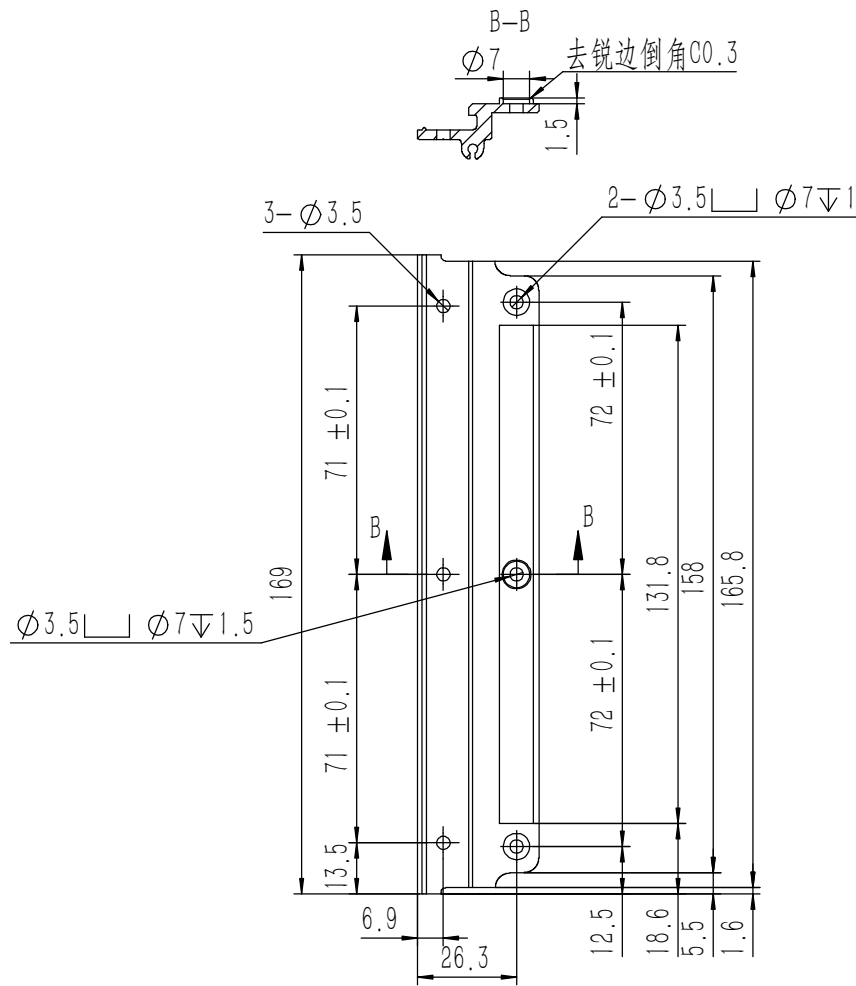
Tolerances (未注公差): 0.5 to 6 ± 0.1 6 to 30 ± 0.2 30 to 120 ± 0.3 120 to 400 ± 0.4	Material (材料):	电解板		YONGU 永固
	Weight: (重量) (Kg)	0.045		
Break sharp edges (未注锐边倒角): Ch 0.05 to 0.25 x45°	Protection: (表面处理):			Drawing Number (图号): YG-TY-A09-004
	Position tolerances (未注位置公差): ±0.05	Part Name (零/部件名称):	侧板连接件 4U	
Angular tolerances (未注角度公差): <6° ± 10' <30° ± 20' <120° ± 30' >120° ± 1°	Part Name (零/部件名称):	侧板连接件 4U		Scale (图幅): A4 Sheet (页数): 1 / 1
	Drawn by (绘图):	莫永康	Date (日期): 2020.05.19	
	Check by (校对):		Date (日期):	
	Signature by (批准):		Date (日期):	Revision (版本): A1



技术要求:

- 1、零件加工表面不应有划痕、擦伤等损伤零件表面的缺陷;
- 2、去除毛刺飞边,锐角倒钝;
- 3、未标注尺寸见3D数模。

Tolerances (未注公差): 0.5 to 6 ± 0.1 6 to 30 ± 0.2 30 to 120 ± 0.3 120 to 400 ± 0.4	Material (材料):	5052-H32		<b>YONGU</b> 永固	
	Weight: (重量) (Kg):	0.706			
Break sharp edges (未注锐边倒角): Ch 0.05 to 0.25 x45°	Protection: (表面处理):			Drawing Number (图号): YG-TY-B02-007	
	Position tolerances (未注位置公差): ±0.05	Part Name (零/部件名称): 上盖板			
Angular tolerances (未注角度公差): <6° ± 10' <30° ± 20' <120° ± 30' >120° ± 1°	Drawn by (绘图):	邓展锋	Date (日期):	2020.05.18	Size: (图幅): A1
	Signature by (批准):		Date (日期):		
		Revision (版本): A1		Sheet (页数): 1 / 1	

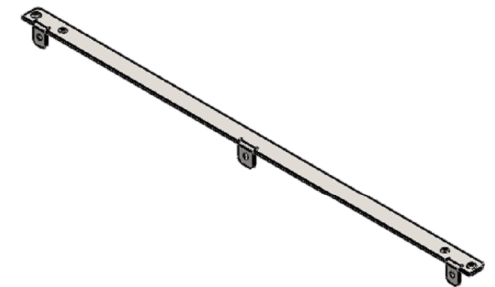
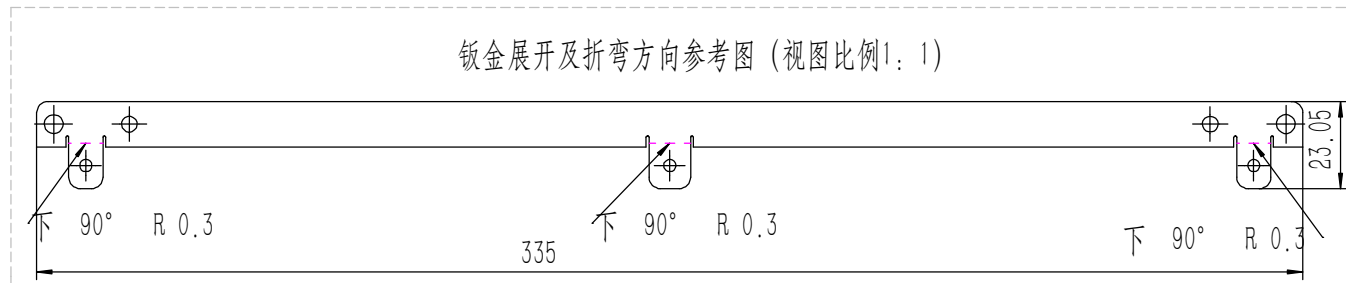
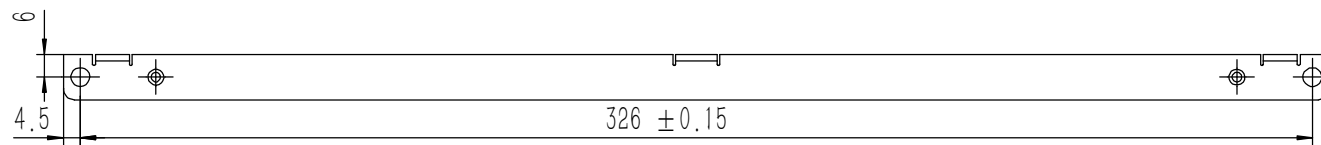
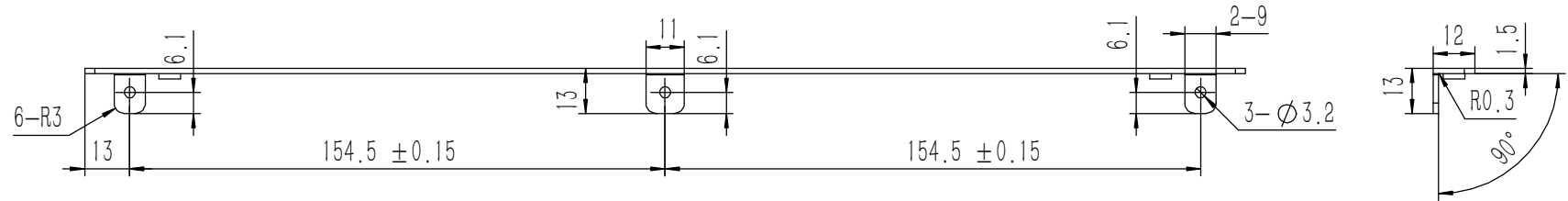
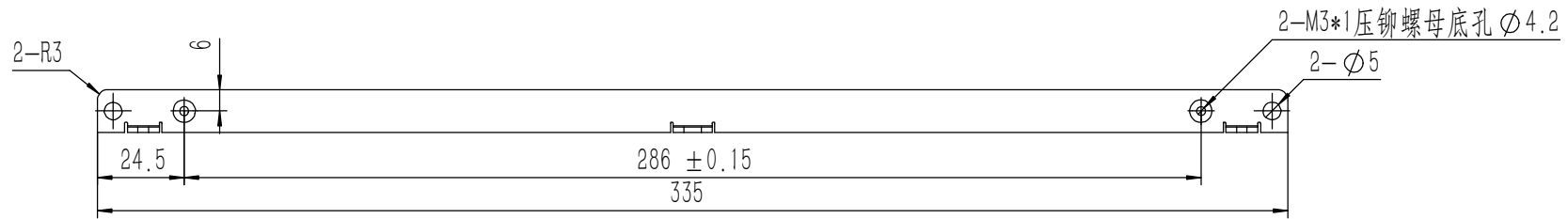


技术要求:

- 1、零件加工表面不应有划痕、擦伤等损伤零件表面的缺陷;
- 2、去除毛刺飞边,锐角倒钝;
- 3、未标注尺寸见3D数模。

Tolerances (未注公差): 0.5 to 6 ± 0.1 6 to 30 ± 0.2 30 to 120 ± 0.3 120 to 400 ± 0.4	Material (材料):	6063-T5					
	Weight: (重量) (Kg):	0.065					
	Protection: (表面处理):						
	Part Name (零/部件名称):	A侧板固定件 4U					
Break sharp edges (未注锐边倒角): Ch 0.05 to 0.25 x45° Position tolerances (未注位置公差): ±0.05	Angular tolerances (未注角度公差): <6° ± 10' <30° ± 20' <120° ± 30' >120° ± 1°	Material (材料):	6063-T5	<b>YONGU</b> 永固	Drawing Number (图号):	YG-TY-A08-004	
		Part Name (零/部件名称):	A侧板固定件 4U		Size: (图幅):	A2	Sheet (页数):
		Drawn by (绘图):	邓展锋	Date (日期):	2020.05.18	Scale (比例):	1:1
		Check by (校对):		Date (日期):		Revision (版本):	A1
		Signature by (批准):		Date (日期):			



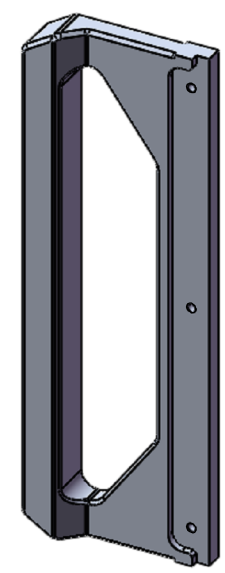
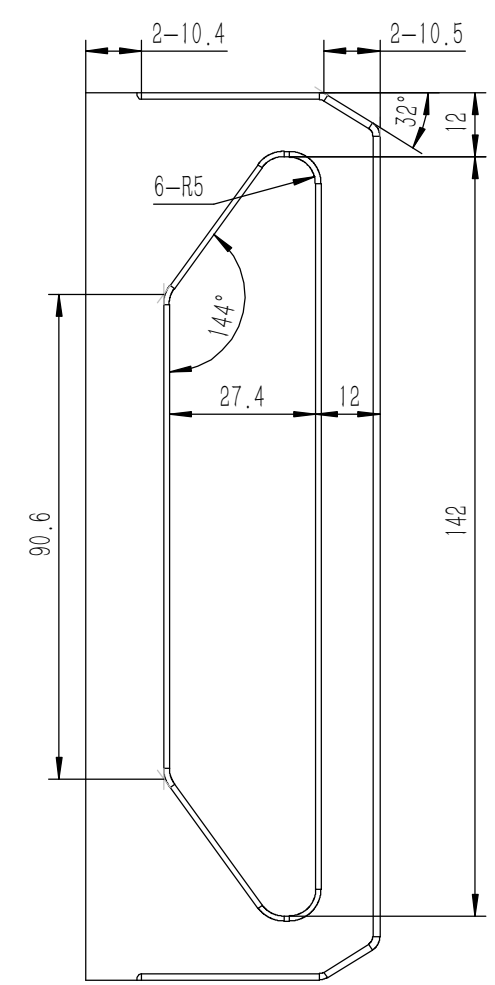
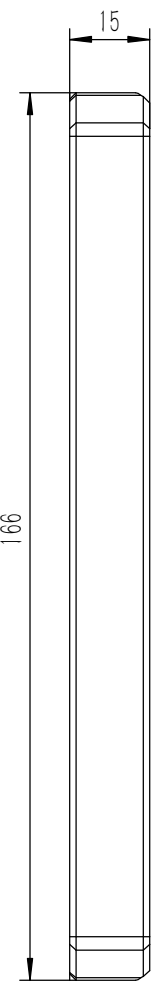
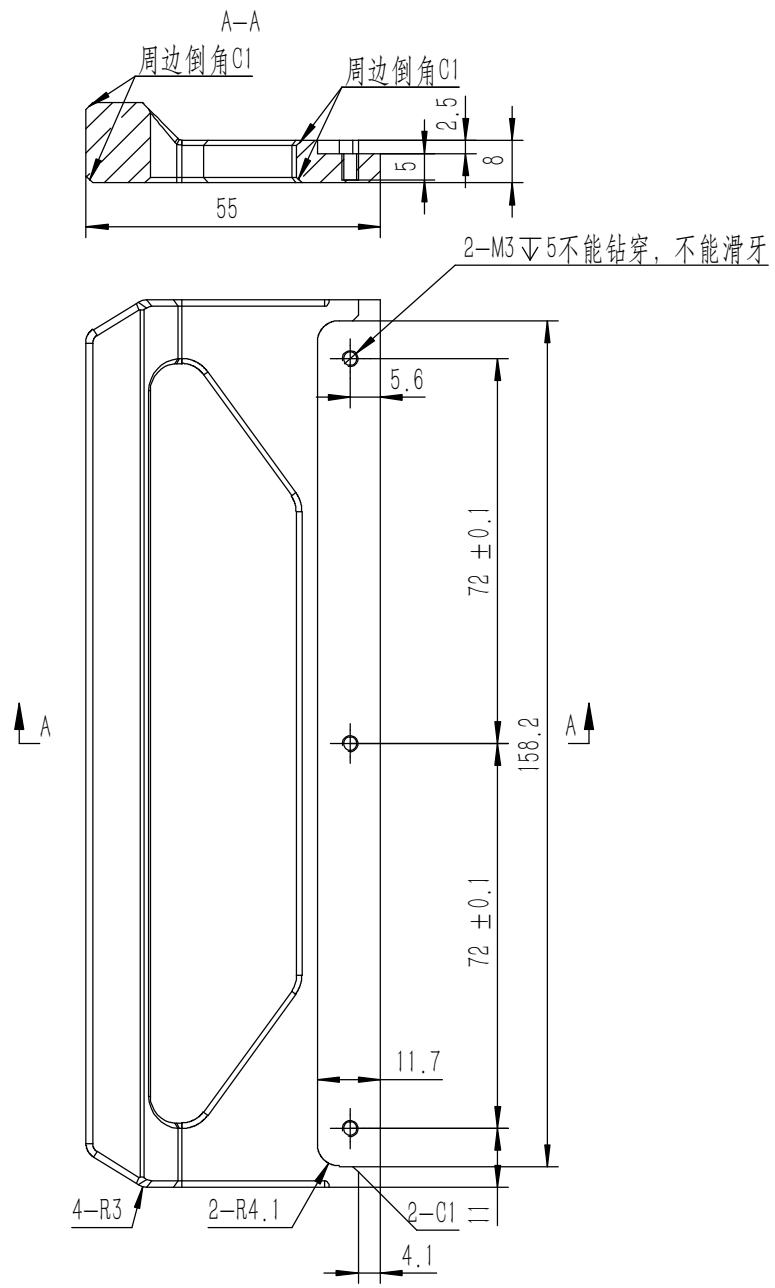


业务代码:

技术要求:

- 1、零件加工表面不应有划痕、擦伤等损伤零件表面的缺陷;
- 2、去除毛刺飞边,锐角倒钝;
- 3、未标注尺寸见3D数模。

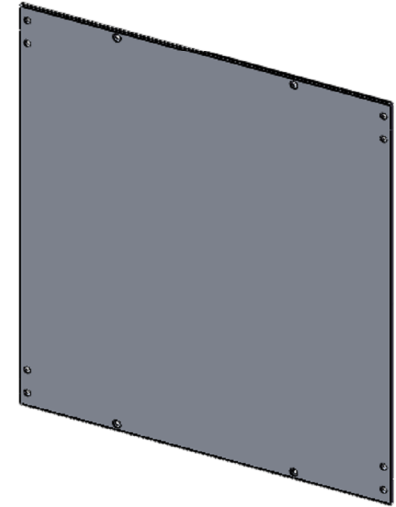
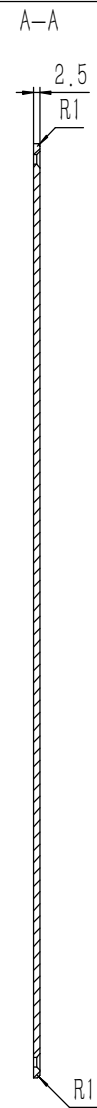
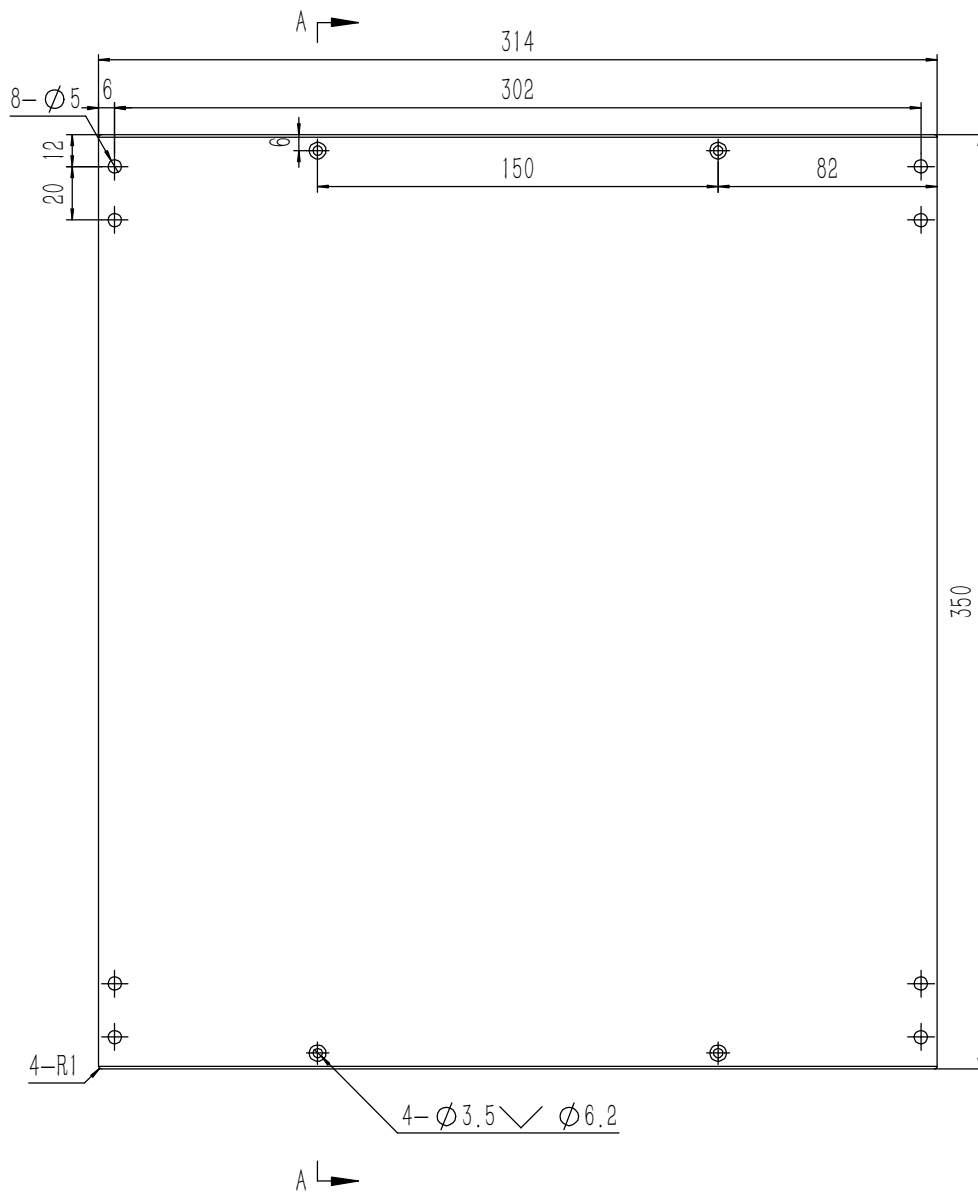
Tolerances (未注公差): 0.5 to 6 ± 0.1 6 to 30 ± 0.2 30 to 120 ± 0.3 120 to 400 ± 0.4	Material (材料): 电解板	YONGU 永固	Drawing Number (图号): YG-TY-A10-002
	Weight: (重量) (Kg): 0.050		
Break sharp edges (未注锐边倒角): Ch 0.05 to 0.25 x45°	Protection: (表面处理): 毛坯	Part Name (零/部件名称): 面板上固定件2	Size: (图幅): A2
	Angular tolerances (未注角度公差): <6° ± 10' <30° ± 20' <120° ± 30' >120° ± 1°		
Position tolerances (未注位置公差): ±0.05	Signature by (批准):	Date (日期):	Scale (比例): 1:1
		Date (日期):	Revision (版本): A1
			Sheet (页数): 1 / 1



技术要求:  
 1、零件加工表面不应有划痕、擦伤等损伤零件表面的缺陷;  
 2、去除毛刺飞边, 锐角倒钝;  
 3、未标注尺寸见3D数模。

Tolerances (未注公差): 0.5 to 6 ± 0.1 6 to 30 ± 0.2 30 to 120 ± 0.3 120 to 400 ± 0.4	Material (材料):	6063-T5	<b>YONGU</b> 永固
	Weight: (重量) (Kg)	0.145	
Break sharp edges (未注锐边倒角): Ch 0.05 to 0.25 x45°	Protection: (表面处理):		Drawing Number (图号): YG-TY-A06-004
	Position tolerances (未注位置公差): ±0.05	Part Name (零/部件名称): 拉手-4U	
Angular tolerances (未注角度公差): <6° ± 10' <30° ± 20' <120° ± 30' >120° ± 1°	Drawn by (绘图): 邓展锋	Date (日期): 2020.05.18	Size (图幅): A3
	Check by (校对):	Date (日期):	Scale (比例): 1:1
	Signature by (批准):	Date (日期):	Revision (版本): A1





技术要求:

- 1、零件加工表面不应有划痕、擦伤等损伤零件表面的缺陷;
- 2、去除毛刺飞边, 锐角倒钝;
- 3、未标注尺寸见3D数模。

Tolerances (未注公差):	
0.5 to 6	± 0.1
6 to 30	± 0.2
30 to 120	± 0.3
120 to 400	± 0.4

Break sharp edges (未注锐边倒角): Ch 0.05 to 0.25 x45°	
Position tolerances (未注位置公差): ± 0.05	

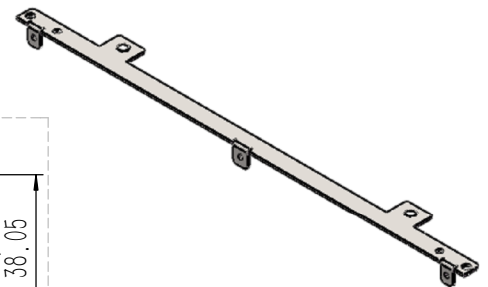
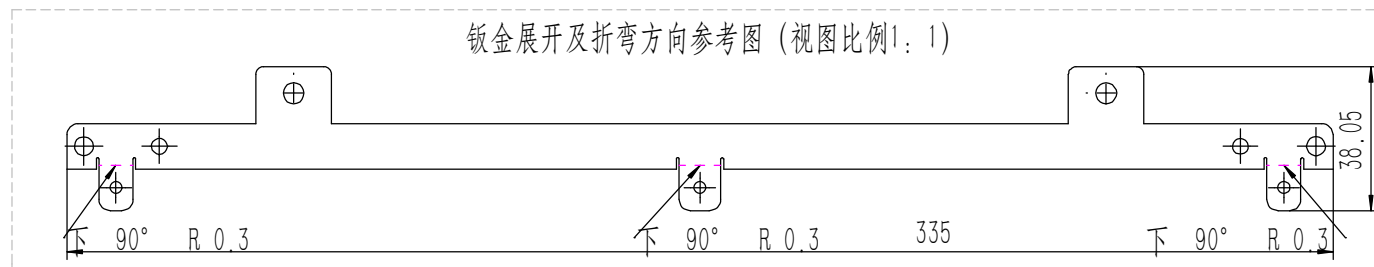
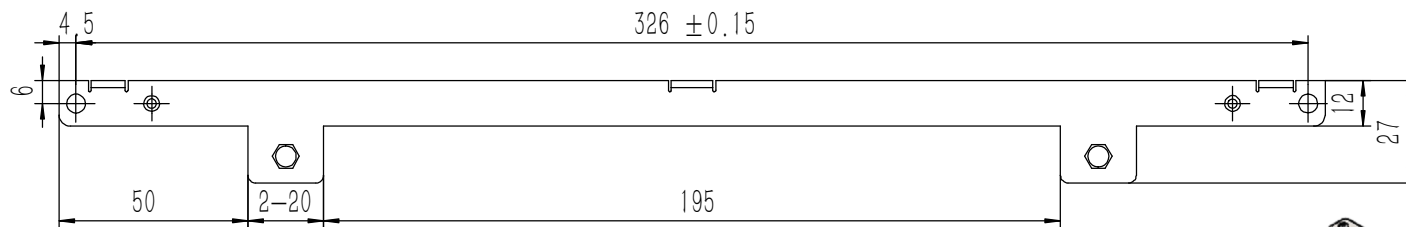
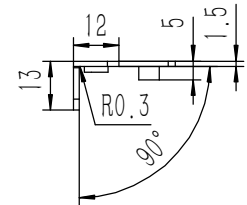
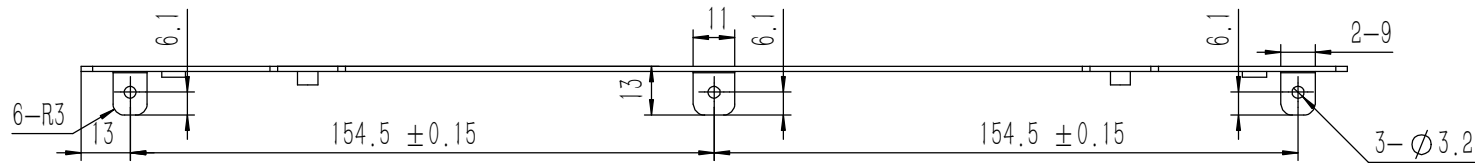
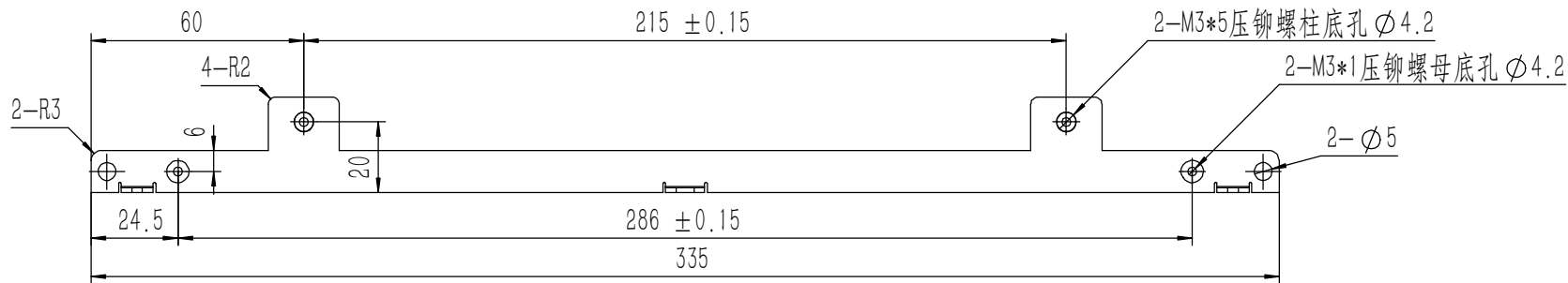
Angular tolerances (未注角度公差):	
<6°	± 10'
<30°	± 20'
<120°	± 30'
>120°	± 1°

Material (材料):	5052-H32
Weight: (重量) (Kg):	0.735
Protection: (表面处理):	
Part Name (零/部件名称):	上下盖板

**YONGU** 永固

Drawing Number (图号): YG-TY-B01-007		Size: (图幅): A1		Sheet (页数):	
Drawn by (绘图): 邓展锋	Date (日期): 2020.05.19	Scale (比例): 1:1	Revision (版本): A1		
Check by (校对):	Date (日期):	1 / 1			
Signature by (批准):	Date (日期):				





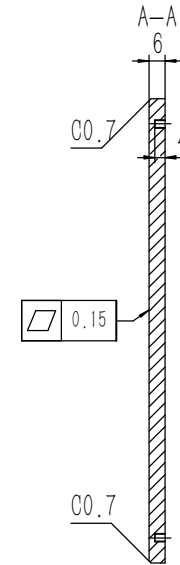
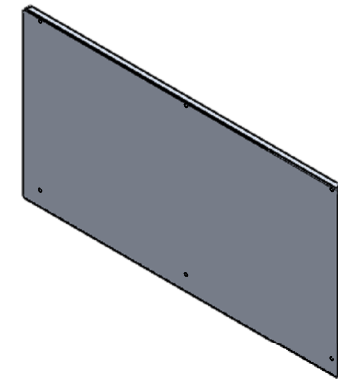
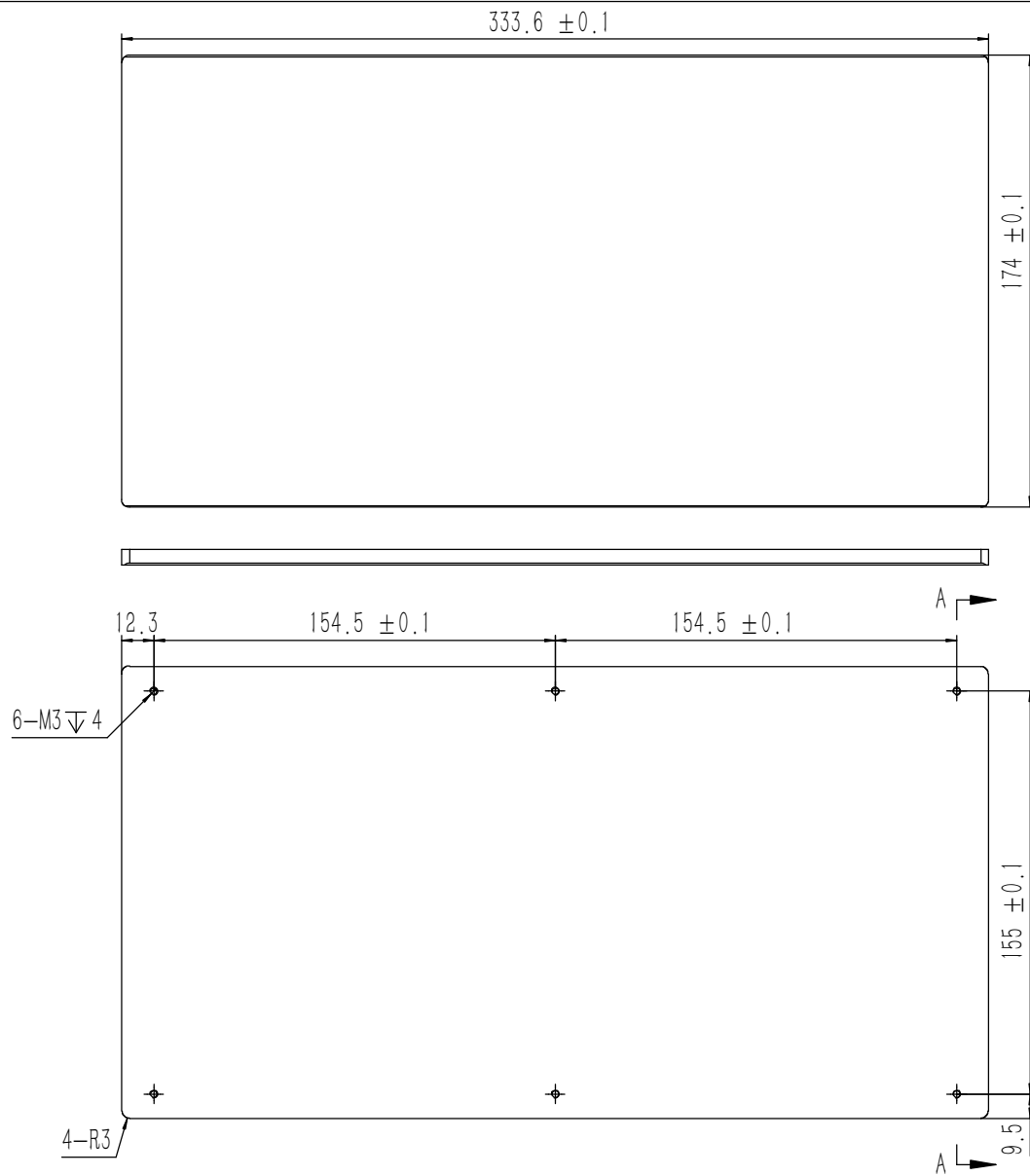
业务代码:

技术要求:

- 1、零件加工表面不应有划痕、擦伤等损伤零件表面的缺陷;
- 2、去除毛刺飞边, 锐角倒钝;
- 3、未标注尺寸见3D数模。

Tolerances (未注公差): 0.5 to 6 ± 0.1 6 to 30 ± 0.2 30 to 120 ± 0.3 120 to 400 ± 0.4	Material (材料): (装配图)	<b>YONGU</b> 永固	Drawing Number (图号):	
	Weight: (重量) (Kg): 0.058		YG-TY-A11-002	
Break sharp edges (未注锐边倒角): Ch 0.05 to 0.25 x45°	Protection: (表面处理): 毛坯	Part Name (零/部件名称): 面板下固定件2	Size: (图幅): A2	Sheet (页数): 1 / 1
	Angular tolerances (未注角度公差): <6° ± 10' <30° ± 20' <120° ± 30' >120° ± 1°		Position tolerances (未注位置公差): ±0.05	
Drawn by (绘图): 许宏彬		Date (日期): 2020.09.18	Revision (版本): A1	
Check by (校对):		Date (日期):		
Signature by (批准):		Date (日期):		





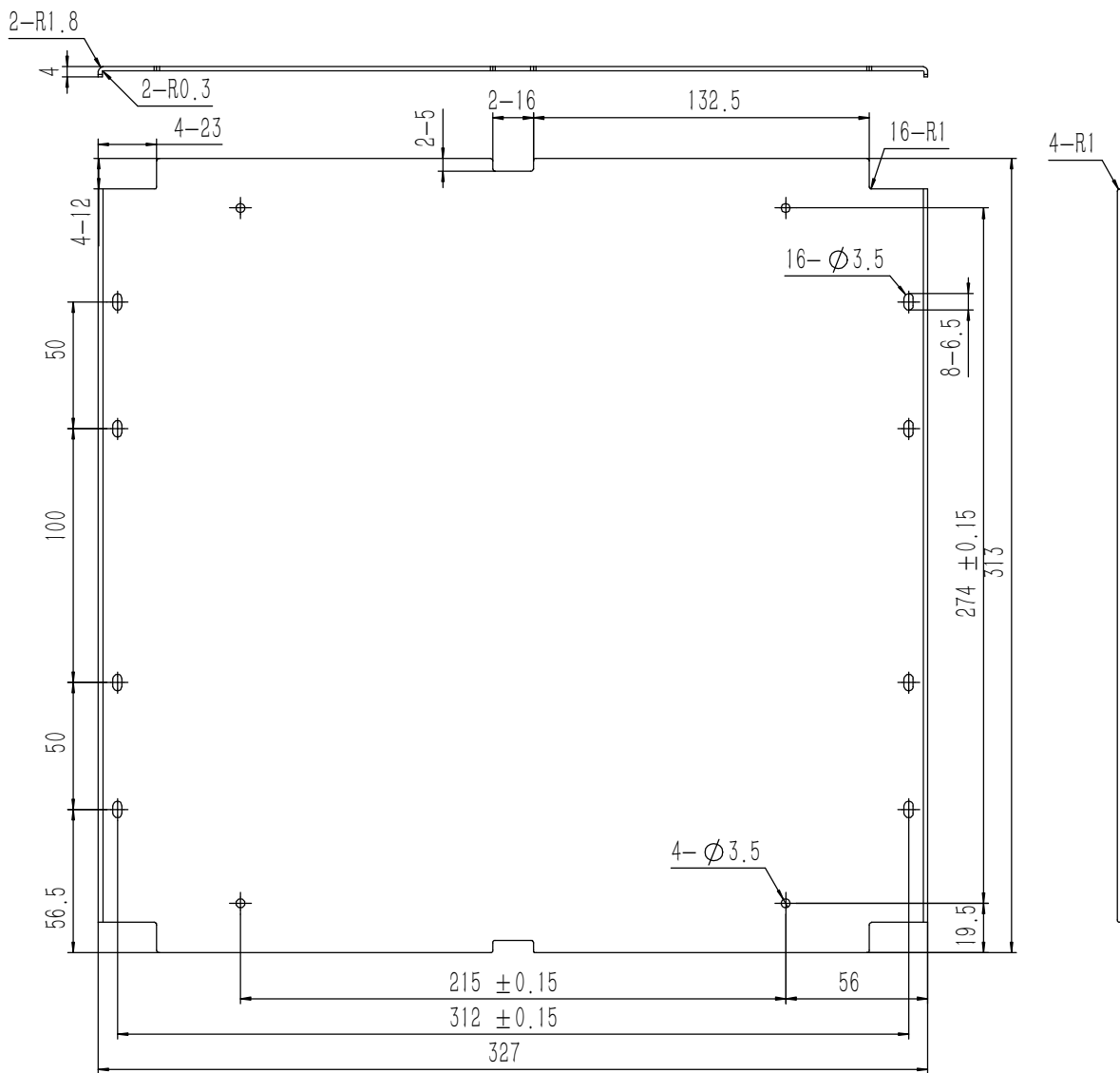
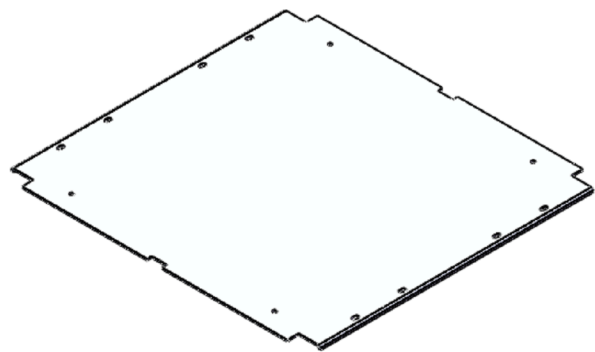
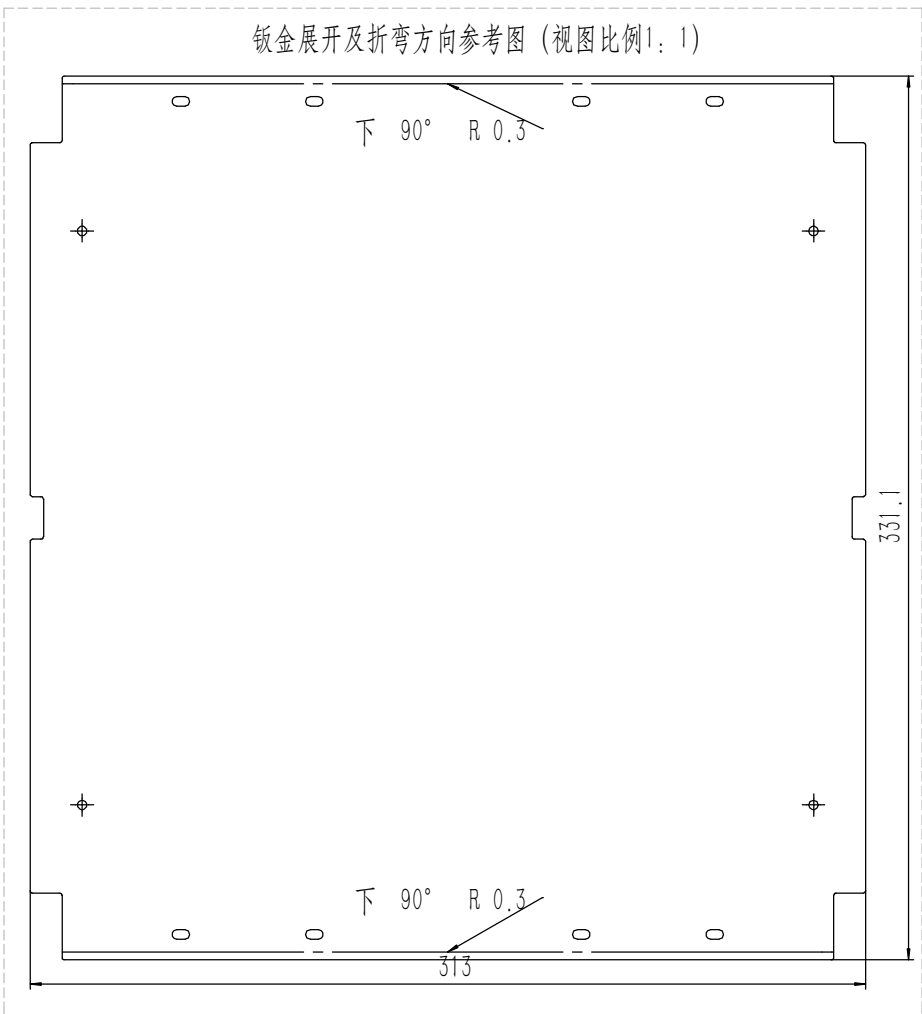
技术要求:

- 1、零件加工表面不应有划痕、擦伤等损伤零件表面的缺陷;
- 2、去除毛刺飞边, 锐角倒钝;
- 3、未标注尺寸见3D数模。

Tolerances (未注公差): 0.5 to 6 ± 0.1 6 to 30 ± 0.2 30 to 120 ± 0.3 120 to 400 ± 0.4	Material (材料):	5052-H32	
	Weight: (重量) (Kg):	0.933	
Break sharp edges (未注锐边倒角): Ch 0.05 to 0.25 x45°	Protection: (表面处理):		
	Position tolerances (未注位置公差): ± 0.05	Part Name (零/部件名称):	Drawing Number (图号):
Angular tolerances (未注角度公差): <6° ± 10' <30° ± 20' <120° ± 30' >120° ± 1°	前后面板-4U		YG-TY-A12-008
	Drawn by (绘图): 莫永康	Date (日期): 2020.05.18	Size: (图幅): A1
	Check by (校对):	Date (日期):	Scale (比例): 1:1
	Signature by (批准):	Date (日期):	Revision (版本): A1
			Sheet (页数): 1 / 1

**YONGU** 永固

钣金展开及折弯方向参考图 (视图比例1:1)



业务代码:

技术要求:

- 1、零件加工表面不应有划痕、擦伤等损伤零件表面的缺陷;
- 2、去除毛刺飞边,锐角倒钝;
- 3、未标注尺寸见3D数模。

Break sharp edges (未注锐边倒角): Ch 0.05 to 0.25 x45°	Angular tolerances (未注角度公差): <6° ± 10' <30° ± 20' <120° ± 30' >120° ± 1°
Position tolerances (未注位置公差): ± 0.05	

Tolerances (未注公差): 0.5 to 6 ± 0.1 6 to 30 ± 0.2 30 to 120 ± 0.3 120 to 400 ± 0.4	Material (材料): 5052-H32	<b>YONGU</b> 永固
	Weight: (重量) (Kg): 0.410	
	Protection: (表面处理):	
	Part Name (零/部件名称): A垫板	Drawing Number (图号): YG-TY-A13-007
Drawn by (绘图): 许宏彬	Date (日期): 2020.09.17	Size: (图幅): A1
Check by (校对):	Date (日期):	Scale (比例): 1:1
Signature by (批准):	Date (日期):	Revision (版本): A1
		Sheet (页数): 1 / 1