

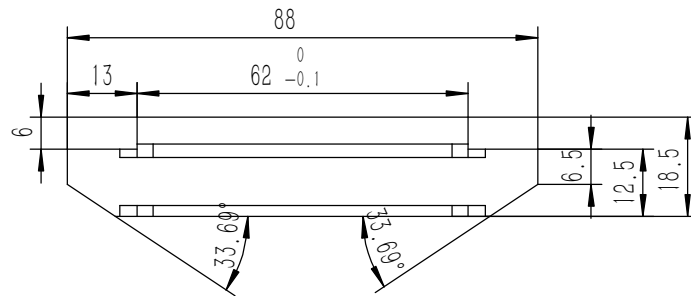
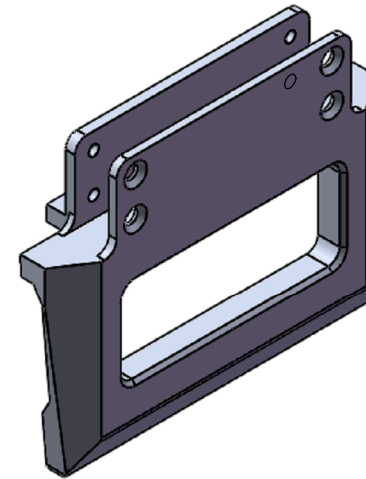
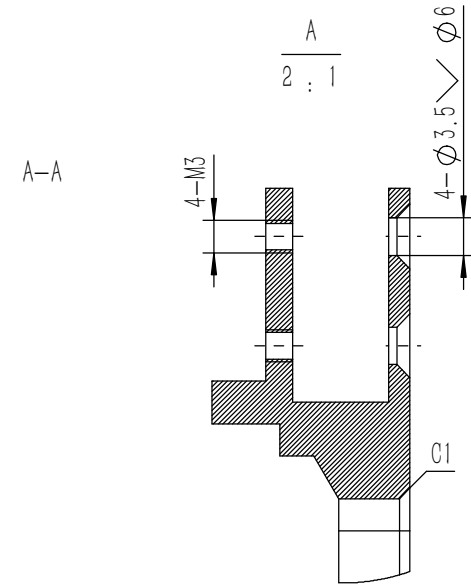
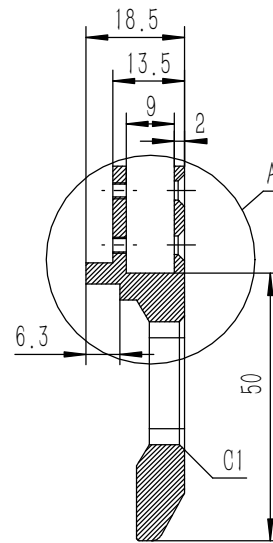
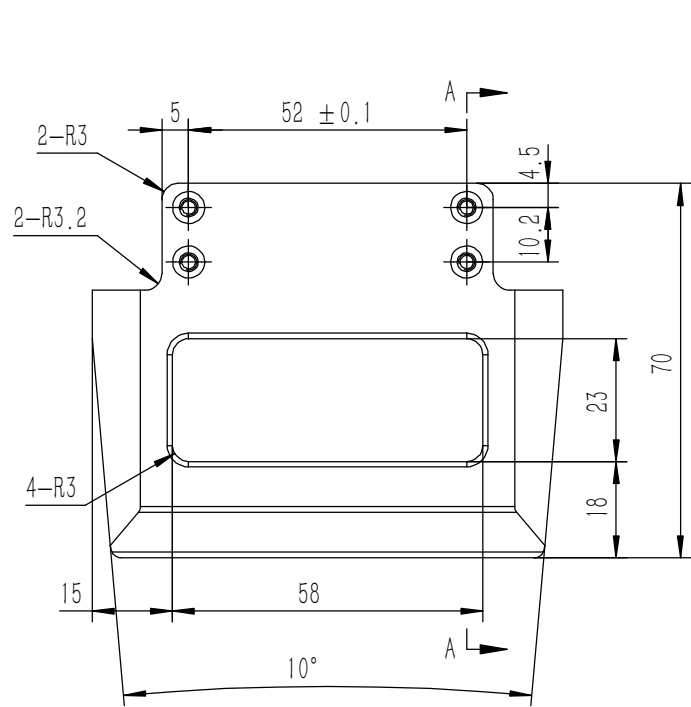
8	YG-TY-JM-001	角码	普通碳钢	4	0.005	
7	GB-T-819.1-2000-C-BE-M3X16	碳钢发黑十字沉头螺丝M3X16	普通碳钢	8	0.0009	
6	GB-T-819.1-2000-C-BE-M3X6	碳钢发黑十字沉头螺丝M3X6	普通碳钢	20	0.0004	
5	YG-G14B-0000-003	盖板	5052-H32	2	0.655	
4	YG-G14B-0000-004	侧板	6063-T5	2	0.343	
3	YG-G14B-0000-002	后面板	6063-T5	1	0.599	
2	YG-G14B-0000-001	前面板	6063-T5	1	0.564	
1	YG-G14B-0000-005	拉手	6063-T5	2	0.077	
序号	图号	名称	材料	数量	单重	备注

技术要求:

- 1、必须按照设计、工艺要求及本规定和有关标准进行装配;
- 2、所有零部件(包括外购、外协件)必须具有检验合格证方能进行装配;
- 3、零件在装配前必须清理和清洗干净,不得有毛刺、飞边、氧化皮、锈蚀、切屑、砂粒、灰尘和油污等,并应符合相应清洁度要求;
- 4、装配过程中零件不得磕碰、划伤和锈蚀;
- 5、油漆未干的零件不得进行装配;
- 6、相对运动的零件,装配时接触面间应加润滑油脂;
- 7、各零、部件装配后相对位置应准确。

Break sharp edges (未注锐边倒角): Ch 0.05 to 0.25 x45°	Angular tolerances (未注角度公差): <6° ± 10' <30° ± 20' <120° ± 30' >120° ± 1°
Position tolerances (未注位置公差): ± 0.05	

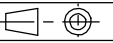
Tolerances (未注公差): 0.5 to 6 ± 0.1 6 to 30 ± 0.2 30 to 120 ± 0.3 120 to 400 ± 0.4		Material (材料): (装配图)		YONGU 永固	
		Weight: (重量) (Kg): 3.347			
		Protection: (表面处理):			
Part Name (零/部件名称): G14B机箱				Drawing Number (图号): YG-G14B-0000-000	
Drawn by (绘图): 莫永康		Date (日期): 2020.05.29		Size (图幅): A0	
Check by (校对):		Date (日期):		Scale (比例): 1:1	
Signature by (批准):		Date (日期):		Sheet (页数): 1 / 1	
				Revision (版本): A1	



技术要求:
 1、零件加工表面不应有划痕、擦伤等损伤零件表面的缺陷;
 2、去除毛刺飞边,锐角倒钝;
 3、未标注尺寸见3D数模。

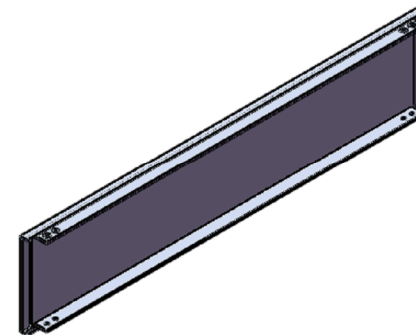
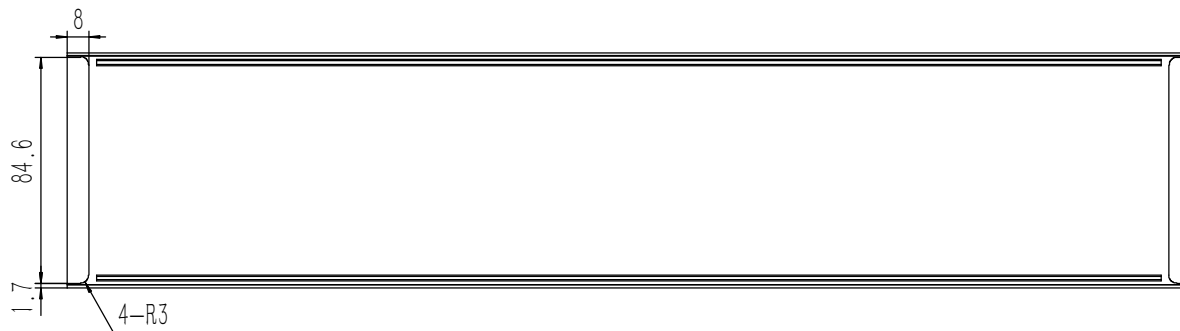
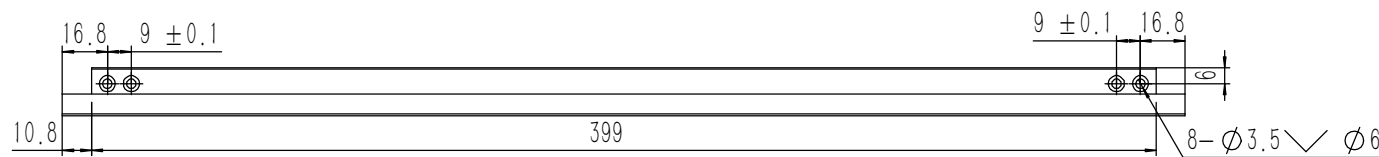
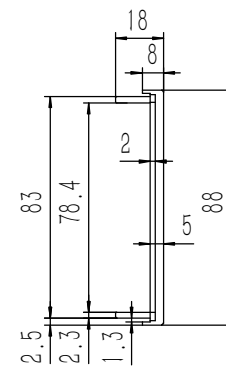
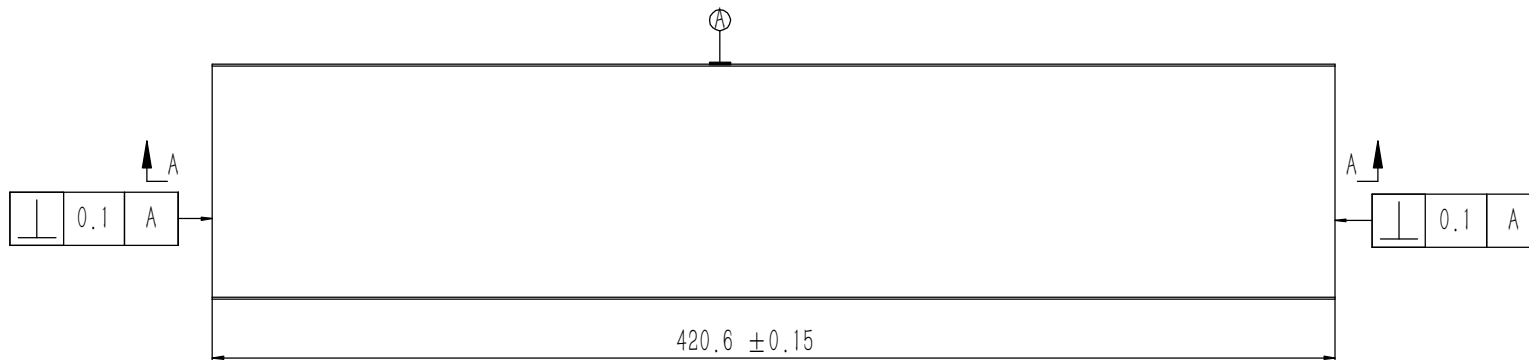
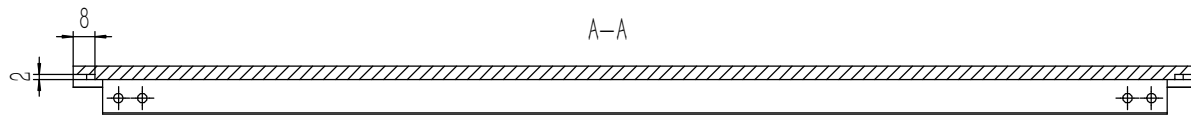
Break sharp edges (未注锐边倒角): Ch 0.05 to 0.25 x45°	Angular tolerances (未注角度公差): <6° ± 10' <30° ± 20' <120° ± 30' >120° ± 1°
Position tolerances (未注位置公差): ±0.05	

Tolerances (未注公差): 0.5 to 6 ± 0.1 6 to 30 ± 0.2 30 to 120 ± 0.3 120 to 400 ± 0.4	Material (材料): 6063-T5	
	Weight: (重量) (Kg) 0.077	
Protection: (表面处理):	Part Name (零/部件名称): 拉手	Drawing Number (图号): YG-G14B-0000-005
Drawn by (绘图): 莫永康	Date (日期): 2020.05.29	Size (图幅): A3
Check by (校对):	Date (日期):	Scale (比例): 1:1
Signature by (批准):	Date (日期):	Revision (版本): A1



Sheet (页数):

1 / 1

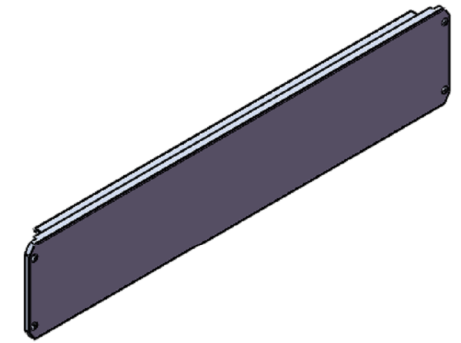
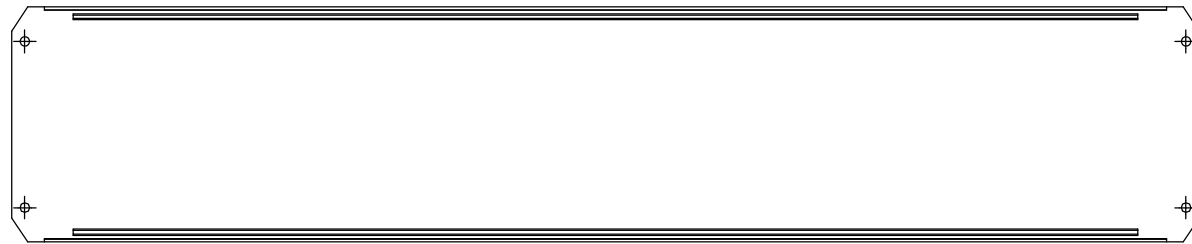
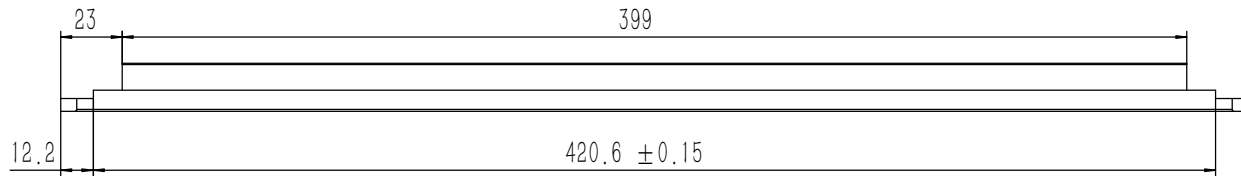
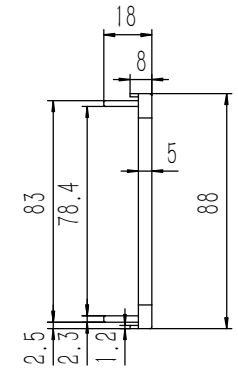
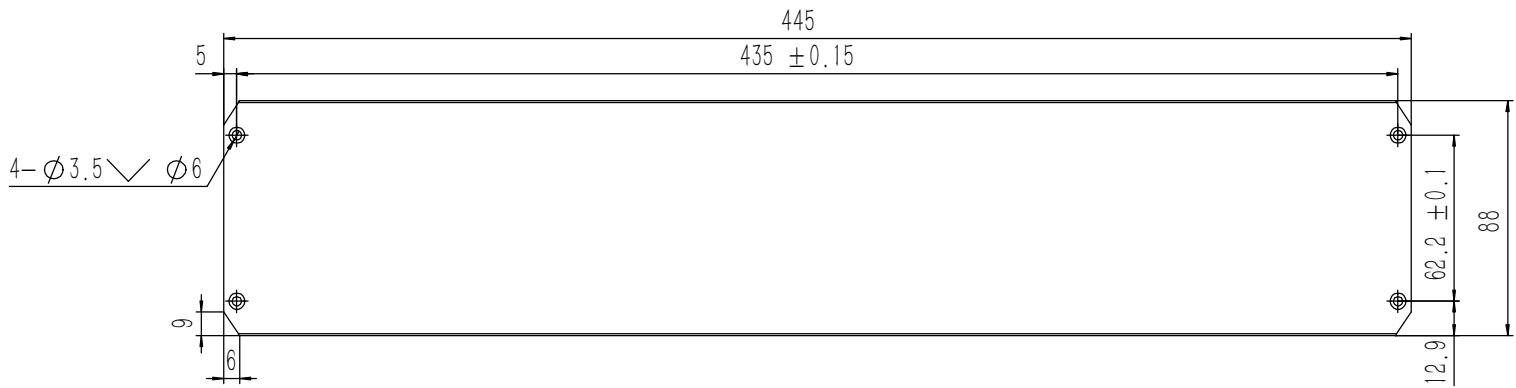


技术要求:

- 1、零件加工表面不应有划痕、擦伤等损伤零件表面的缺陷;
- 2、去除毛刺飞边, 锐角倒钝;
- 3、未标注尺寸见3D数模。

Tolerances (未注公差): 0.5 to 6 ± 0.1 6 to 30 ± 0.2 30 to 120 ± 0.3 120 to 400 ± 0.4	Material (材料):	6063-T5	
	Weight: (重量) (Kg):	0.564	
Break sharp edges (未注锐边倒角): Ch 0.05 to 0.25 x45°	Protection: (表面处理):		
	Position tolerances (未注位置公差): ± 0.05	Part Name (零/部件名称):	Drawing Number (图号):
Angular tolerances (未注角度公差): <6° ± 10' <30° ± 20' <120° ± 30' >120° ± 1°	前面板		YG-G14B-0000-001
	Drawn by (绘图): 莫永康	Date (日期): 2020.05.29	Size: (图幅): A1
	Check by (校对):	Date (日期):	Scale (比例): 1:1
	Signature by (批准):	Date (日期):	Revision (版本): A1
			Sheet (页数): 1 / 1

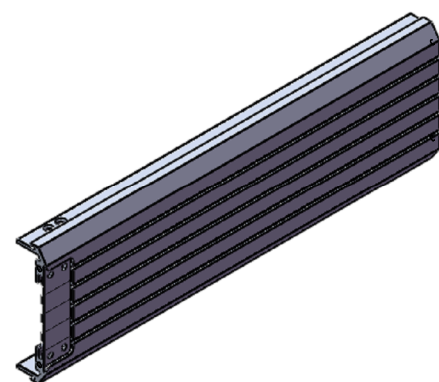
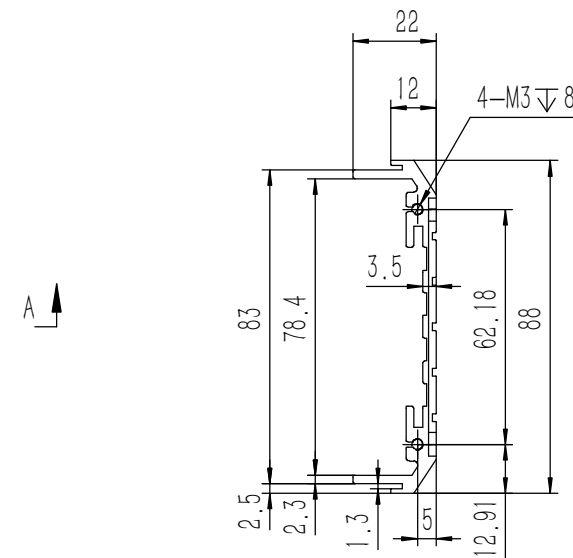
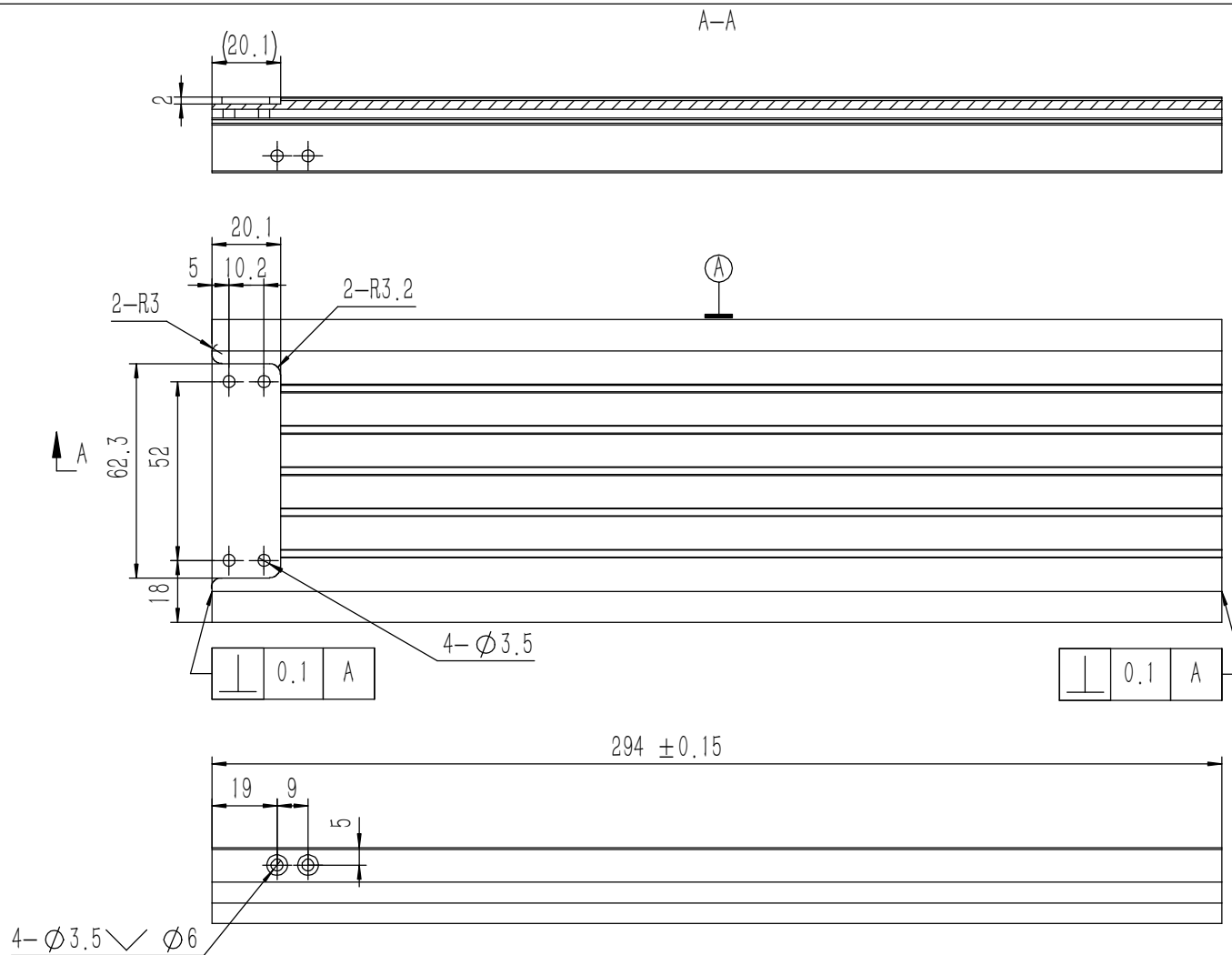
YONGU 永固



技术要求:
 1、零件加工表面不应有划痕、擦伤等损伤零件表面的缺陷;
 2、去除毛刺飞边,锐角倒钝;
 3、未标注尺寸见3D数模。

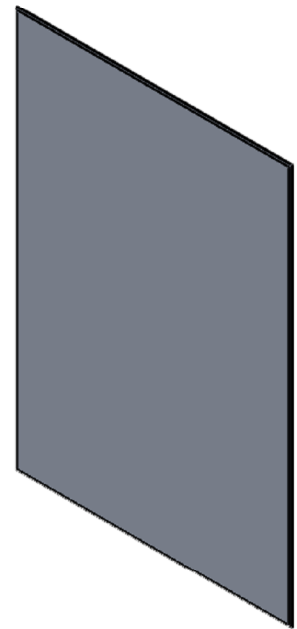
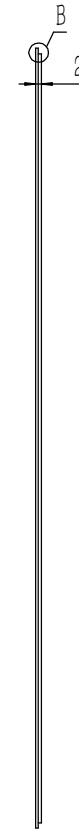
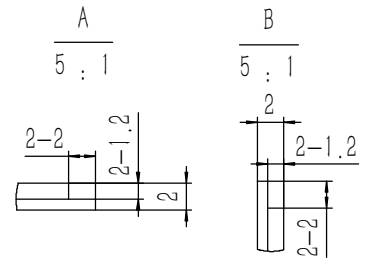
Tolerances (未注公差): 0.5 to 6 ± 0.1 6 to 30 ± 0.2 30 to 120 ± 0.3 120 to 400 ± 0.4	Material (材料):	6063-T5	
	Weight: (重量) (Kg):	0.599	
Break sharp edges (未注锐边倒角): Ch 0.05 to 0.25 x45°	Protection: (表面处理):		
	Position tolerances (未注位置公差): ± 0.05	Part Name (零/部件名称):	
Angular tolerances (未注角度公差): <6° ± 10' <30° ± 20' <120° ± 30' >120° ± 1°	后面板		Drawing Number (图号):
	Drawn by (绘图):	莫永康	YG-G14B-0000-002
Signature by (批准):	Date (日期):	2020.05.29	Size: (图幅):
	Date (日期):		A1
	Scale (比例):	1:1	Sheet (页数):
	Revision (版本):	A1	1 / 1





- 技术要求:
- 1、零件加工表面不应有划痕、擦伤等损伤零件表面的缺陷;
 - 2、去除毛刺飞边, 锐角倒钝;
 - 3、未标注尺寸见3D数模。

Tolerances (未注公差):	Material (材料):	6063-T5	YONGU 永固
	0.5 to 6 ± 0.1	Weight: (重量) (Kg):	
6 to 30 ± 0.2	Protection: (表面处理):		Drawing Number (图号):
30 to 120 ± 0.3	Part Name (零/部件名称):	侧板	
120 to 400 ± 0.4	Angular tolerances (未注角度公差):	侧板	Size: (图幅): A2
Break sharp edges (未注锐边倒角):	<6° ± 10'	Drawn by (绘图): 莫永康	Date (日期): 2020.05.29
Ch 0.05 to 0.25 x45°	<30° ± 20'	Check by (校对):	Date (日期):
Position tolerances (未注位置公差):	<120° ± 30'	Signature by (批准):	Date (日期):
±0.05	>120° ± 1°		
			Scale (比例): 1:1
			Revision (版本): A1
			Sheet (页数): 1 / 1



技术要求:

- 1、零件加工表面不应有划痕、擦伤等损伤零件表面的缺陷;
- 2、去除毛刺飞边,锐角倒钝;
- 3、未标注尺寸见3D数模。

Tolerances (未注公差):	
0.5 to 6	± 0.1
6 to 30	± 0.2
30 to 120	± 0.3
120 to 400	± 0.4

Material (材料):	5052-H32
Weight: (重量) (Kg):	0.655
Protection: (表面处理):	
Part Name (零/部件名称):	盖板



Drawing Number (图号):	YG-G14B-0000-003
----------------------	------------------

Break sharp edges (未注锐边倒角): Ch 0.05 to 0.25 x45°	Angular tolerances (未注角度公差):
<6°	± 10'
<30°	± 20'
<120°	± 30'
>120°	± 1°
Position tolerances (未注位置公差):	± 0.05

Drawn by (绘图): 莫永康	Date (日期): 2020.05.29	Size: (图幅): A1	Sheet (页数): 1 / 1
Check by (校对):	Date (日期):	Scale (比例): 1:1	
Signature by (批准):	Date (日期):	Revision (版本): A1	