

序号	图号	名称	材料	数量	单重	备注
21	DIN-9250-S-NL-M3	不锈钢防松垫圈	SUS 304	8	0.000	
20	GB-T-973-1976-C-NI-M3X12	碳钢镀锌十字大扁头螺丝M3X12	普通碳钢	16	0.001	
19	YG-TY-B05-001	B包角1	6063-T5	4	0.035	
18	YG-TY-XJD-001	自粘胶垫35X11X3	硅橡胶	8	0.0013	
17	YG-TY-A12-001	前后面板-2U	5052-H32	2	0.309	
16	GB-T-973-1976-C-NI-M3X4	碳钢镀锌十字大扁头螺丝M3X4	普通碳钢	22	0.0005	
15	YG-TY-A08-001	侧板固定件-2U	6063-T5	4	0.029	
14	BSO-M3-5-ZI-D5.4	压铆螺母 M3X5	普通碳钢	6	0.001	
13	YG-TY-A09-001	侧板连接件 2U	电解板	2	0.022	
12	YG-TY-B01-001	上下盖板	5052-H32	1	0.343	
11	YG-TY-B03-001	B组合侧板	6063-T5	4	0.119	
10	YG-TY-A13-001	A垫板	5052-H32	1	0.184	
9	YG-TY-A11-001	面板下固定件1	电解板	2	0.039	
8	YG-TY-A06-001	拉手-2U	6063-T5	2	0.070	
7	YG-TY-A10-001	面板上固定件1	电解板	2	0.033	
6	YG-TY-B02-001	上盖板	5052-H32	1	0.323	
5	GB-T-70.3-2000-C-NI-M3X6	芳生镀白镍内六角沉头螺丝M3X6	普通碳钢	4	0.0004	
4	YG-TY-B05-002	B包角2	6063-T5	4	0.035	
3	S-M3-1-ZI	压铆螺母镀锌M3X1	普通碳钢	8	0.3750	
2	YG-TY-A07-001	后防护条-2U	5052-H32	2	0.036	
1	GB-T-973-1976-C-NI-M3X6	碳钢镀锌十字大扁头螺丝M3X6	普通碳钢	16	0.0006	

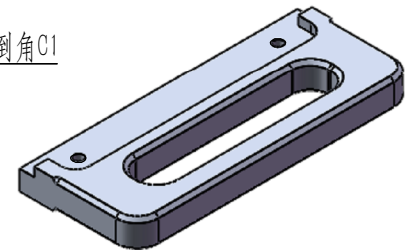
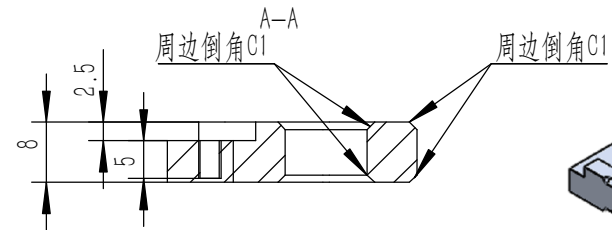
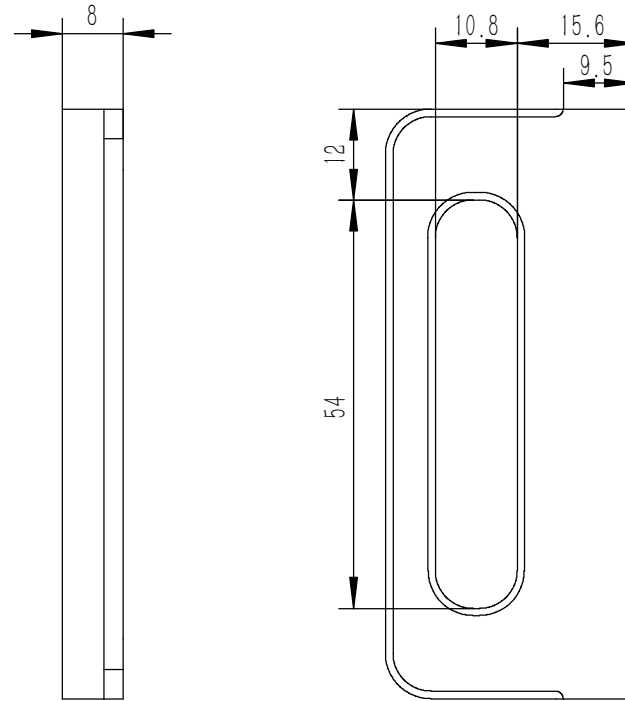
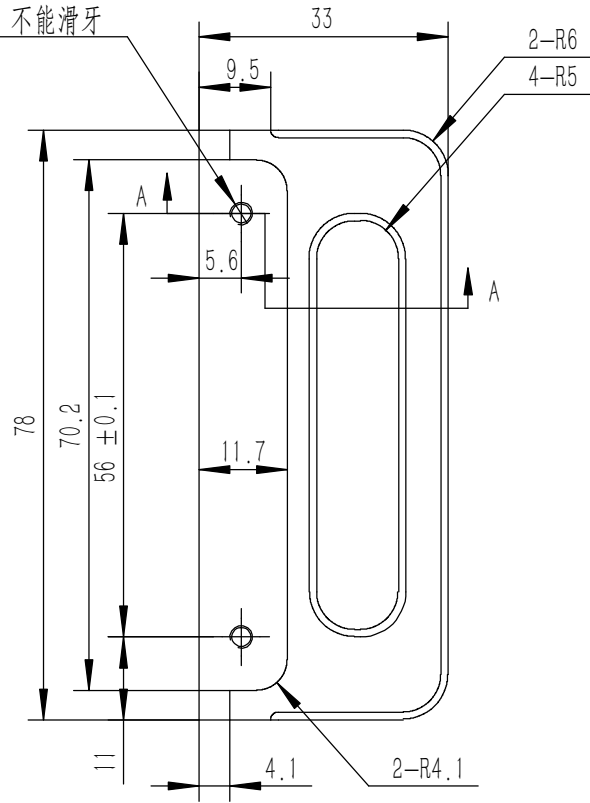
技术要求:

- 1、必须按照设计、工艺要求及本规定和有关标准进行装配;
- 2、所有零部件(包括外购、外协件)必须具有检验合格证方能进行装配;
- 3、零件在装配前必须清理和清洗干净,不得有毛刺、飞边、氧化皮、锈蚀、切屑、砂粒、灰尘和油污等,并应符合相应清洁度要求;
- 4、装配过程中零件不得磕碰、划伤和锈蚀;
- 5、油漆未干的零件不得进行装配;
- 6、相对运动的零件,装配时接触面间应加润滑油脂;
- 7、各零、部件装配后相对位置应准确。

Break sharp edges (未注锐边倒角): Ch 0.05 to 0.25 x45°	Angular tolerances (未注角度公差): <6° ± 10' <30° ± 20' <120° ± 30' >120° ± 1°
Position tolerances (未注位置公差): ± 0.05	

Tolerances (未注公差): 0.5 to 6 ± 0.1 6 to 30 ± 0.2 30 to 120 ± 0.3 120 to 400 ± 0.4		Material (材料): (装配图)		<b>YONGU</b> 永固
		Weight: (重量) (Kg): 2.796		
		Protection: (表面处理):		
		Part Name (零/部件名称): B01机箱		Drawing Number (图号): YG-B01-1000-000
		Drawn by (绘图): 邓展锋	Date (日期): 2020.05.21	Size (图幅): A0
		Check by (校对):	Date (日期):	Scale (比例): 1:1
		Signature by (批准):	Date (日期):	Sheet (页数): 1 / 1
				Revision (版本): A1

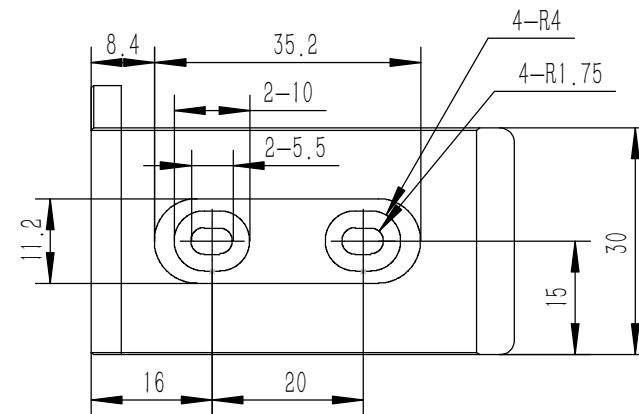
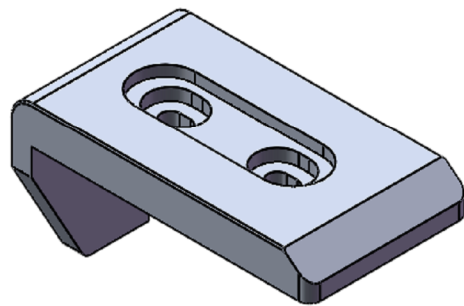
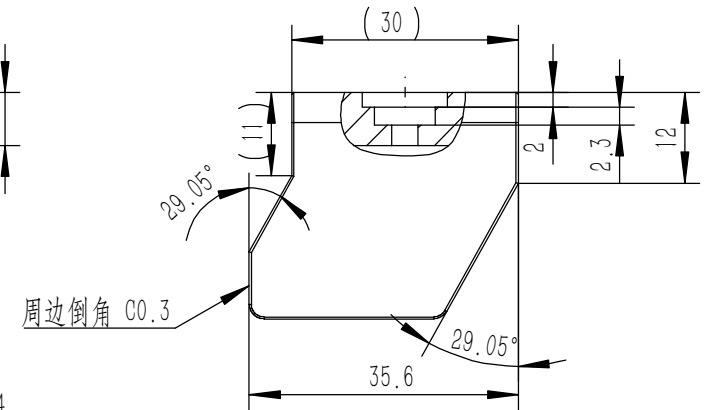
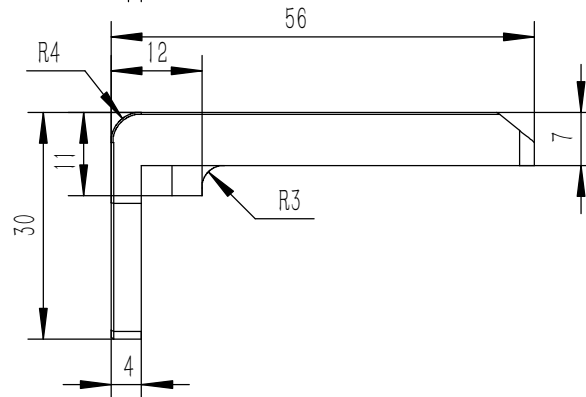
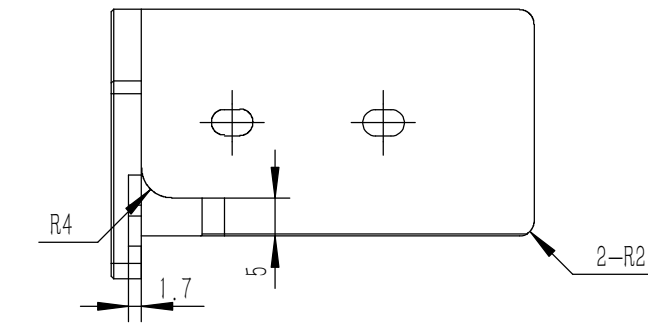
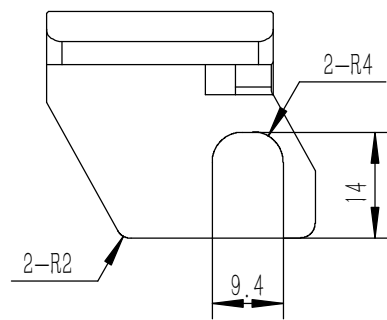
2-M3 $\nabla$ 5不能钻穿，不能滑牙



技术要求:

- 1、零件加工表面不应有划痕、擦伤等损伤零件表面的缺陷;
- 2、去除毛刺飞边，锐角倒钝;
- 3、未标注尺寸见3D数模。

Tolerances (未注公差): 0.5 to 6 ± 0.1 6 to 30 ± 0.2 30 to 120 ± 0.3 120 to 400 ± 0.4	Material (材料):	5052-H32		<b>YONGU</b> 永固
	Weight: (重量) (Kg)	0.036		
Break sharp edges (未注锐边倒角): Ch 0.05 to 0.25 x45°	Protection: (表面处理):			Drawing Number (图号): YG-TY-A07-001
	Position tolerances (未注位置公差): ±0.05	Part Name (零/部件名称):	后防护条-2U	
Angular tolerances (未注角度公差): <6° ± 10' <30° ± 20' <120° ± 30' >120° ± 1°	Drawn by (绘图):	邓展锋	Date (日期):	2020.05.16
	Check by (校对):		Date (日期):	
	Signature by (批准):		Date (日期):	
		Size: (图幅):	A4	Sheet (页数): 1 / 1
		Scale (比例):	1:1	
		Revision (版本):	A1	



**技术要求:**

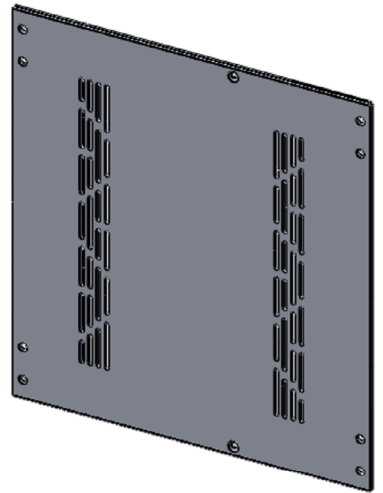
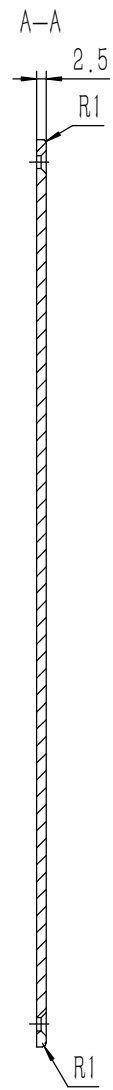
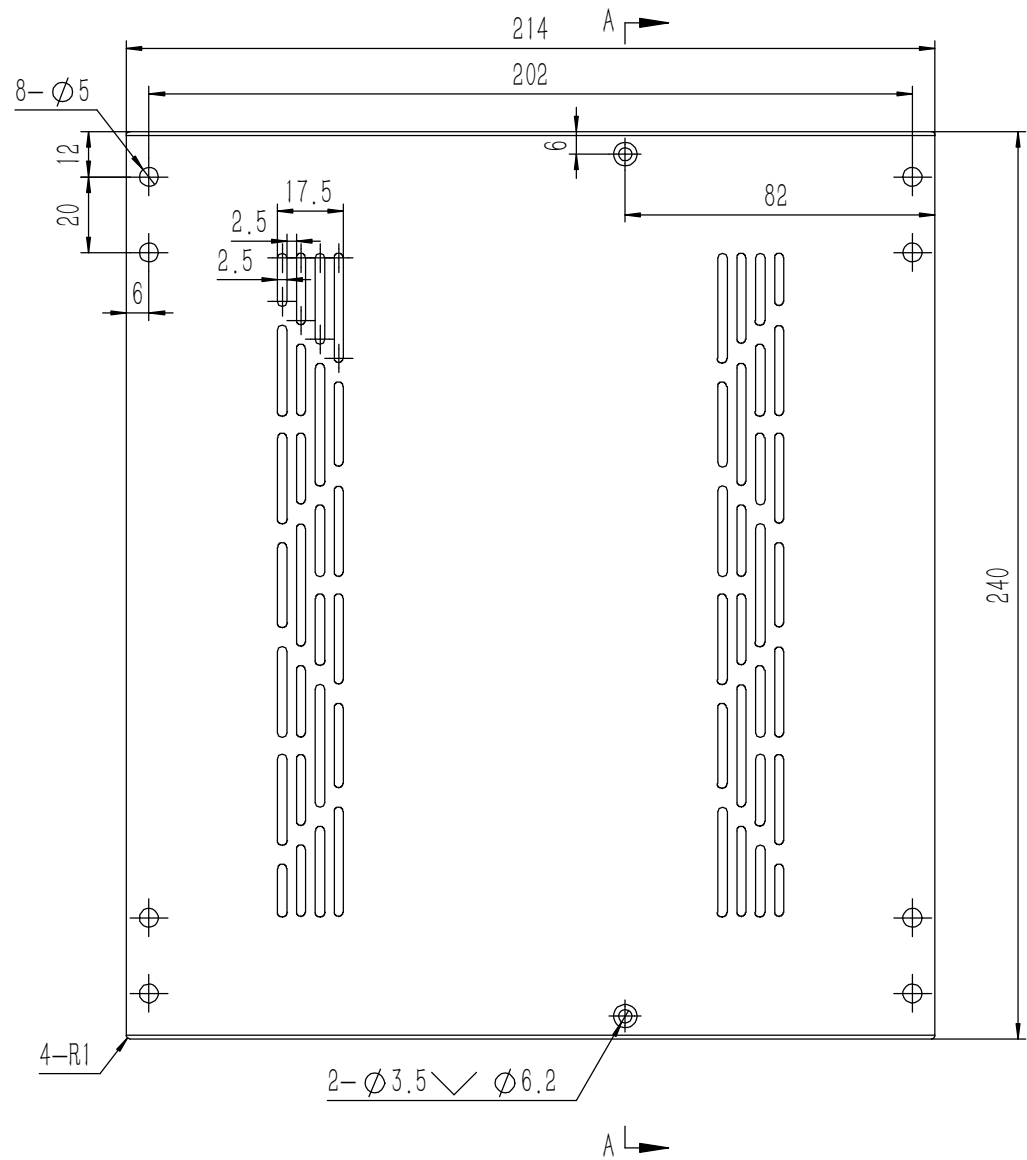
- 1、零件加工表面不应有划痕、擦伤等损伤零件表面的缺陷;
- 2、去除毛刺飞边, 锐角倒钝;
- 3、未标注尺寸见3D数模。

Break sharp edges (未注锐边倒角): Ch 0.05 to 0.25 x45°	Angular tolerances (未注角度公差):
Position tolerances (未注位置公差): ±0.05	<6° ± 10' <30° ± 20' <120° ± 30' >120° ± 1°

Tolerances (未注公差):	Material (材料): 6063-T5
0.5 to 6 ± 0.1	Weight: (重量) (Kg) 0.035
6 to 30 ± 0.2	Protection: (表面处理):
30 to 120 ± 0.3	Part Name (零/部件名称):
120 to 400 ± 0.4	B包角2

**YONGU** 永固

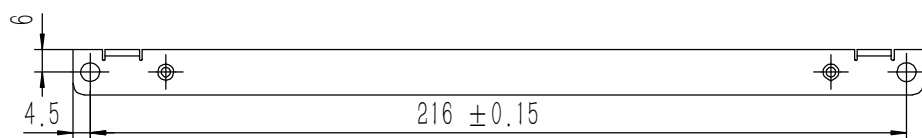
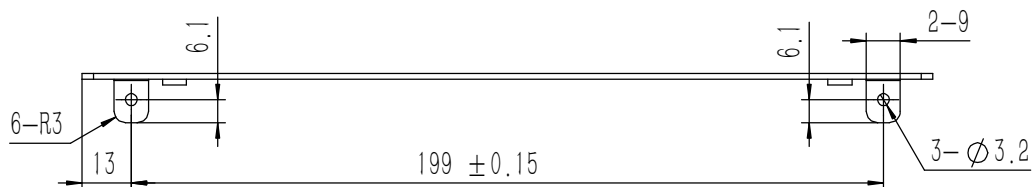
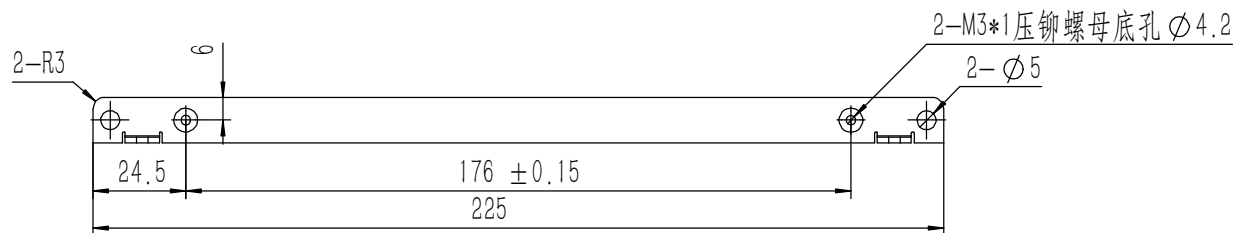
Drawing Number (图号):		YG-TY-B05-002	
Drawn by (绘图):	Date (日期): 2020.05.18	Size: (图幅): A4	Sheet (页数): 1 / 1
Check by (校对):	Date (日期):	Scale (比例): 1:1	
Signature by (批准):	Date (日期):	Revision (版本): A1	



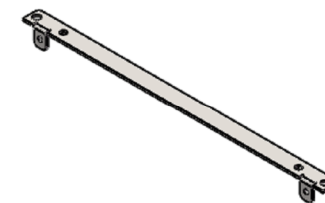
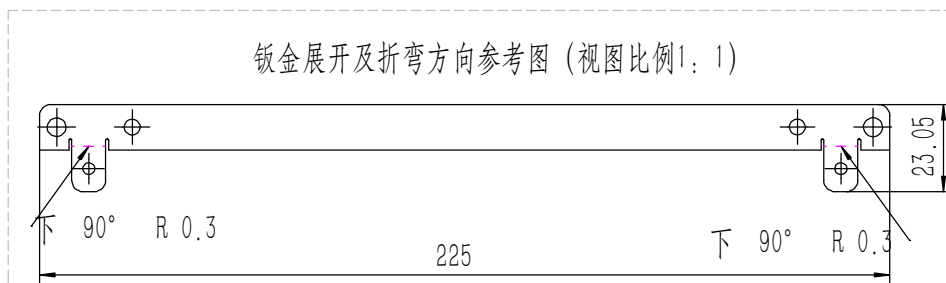
技术要求:  
 1、零件加工表面不应有划痕、擦伤等损伤零件表面的缺陷;  
 2、去除毛刺飞边,锐角倒钝;  
 3、未标注尺寸见3D数模。

Tolerances (未注公差): 0.5 to 6 ± 0.1 6 to 30 ± 0.2 30 to 120 ± 0.3 120 to 400 ± 0.4	Material (材料): 5052-H32 Weight: (重量) (Kg): 0.323 Protection: (表面处理): Part Name (零/部件名称):	Material (材料): 5052-H32 Weight: (重量) (Kg): 0.323 Protection: (表面处理): Part Name (零/部件名称):		Drawing Number (图号):	
				YG-TY-B02-001	
Break sharp edges (未注锐边倒角): Ch 0.05 to 0.25 x45° Position tolerances (未注位置公差): ±0.05	Angular tolerances (未注角度公差): <6° ± 10' <30° ± 20' <120° ± 30' >120° ± 1°	上盖板		Size: (图幅): A2	Sheet (页数): 1 / 1
		Drawn by (绘图): 邓展锋	Date (日期): 2020.05.18	Scale (比例): 1:1	
		Check by (校对):	Date (日期):	Revision (版本): A1	
		Signature by (批准):	Date (日期):		





钣金展开及折弯方向参考图 (视图比例1:1)



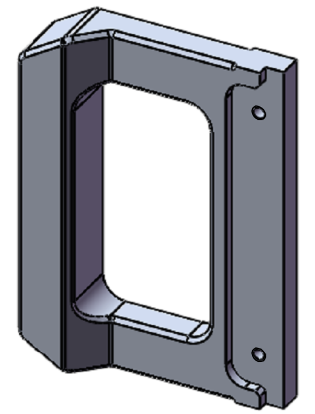
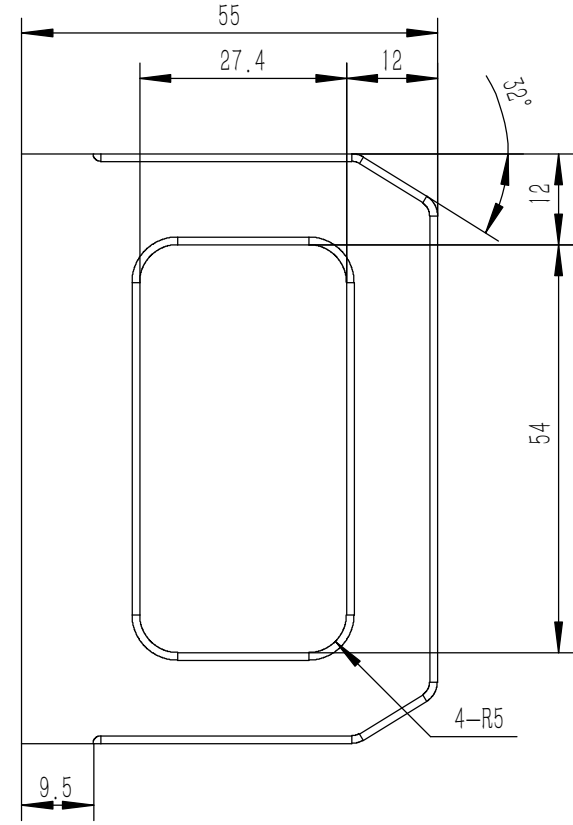
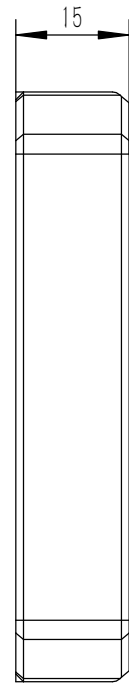
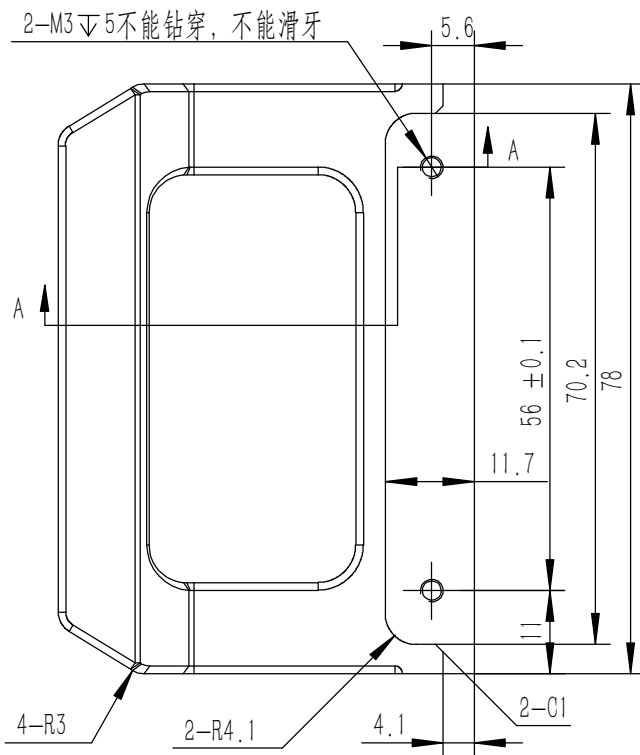
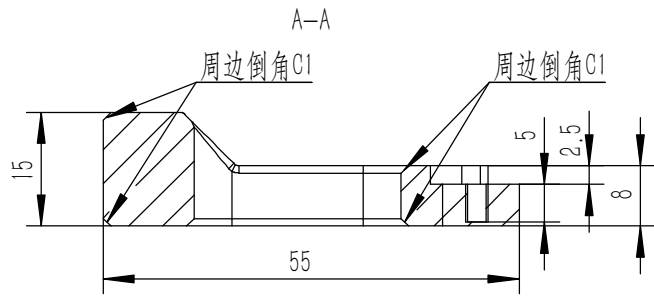
业务代码:

技术要求:

- 1、零件加工表面不应有划痕、擦伤等损伤零件表面的缺陷;
- 2、去除毛刺飞边,锐角倒钝;
- 3、未标注尺寸见3D数模。

Tolerances (未注公差): 0.5 to 6 $\pm$ 0.1 6 to 30 $\pm$ 0.2 30 to 120 $\pm$ 0.3 120 to 400 $\pm$ 0.4	Material (材料):	电解板	
	Weight: (重量) (Kg):	0.033	
Break sharp edges (未注锐边倒角): Ch 0.05 to 0.25 x45° Position tolerances (未注位置公差): $\pm$ 0.05	Protection: (表面处理):	毛坯	
	Angular tolerances (未注角度公差): <30° $\pm$ 10' <120° $\pm$ 30' >120° $\pm$ 1°	Part Name (零/部件名称):	面板上固定件1
	Drawing Number (图号):	YG-TY-A10-001	
	Drawn by (绘图):	许宏彬	Date (日期): 2020.09.18
	Check by (校对):		Date (日期):
	Signature by (批准):		Date (日期):
	Size: (图幅):	A2	
	Scale (比例):	1:1	
	Revision (版本):	A1	
	Sheet (页数):	1 / 1	

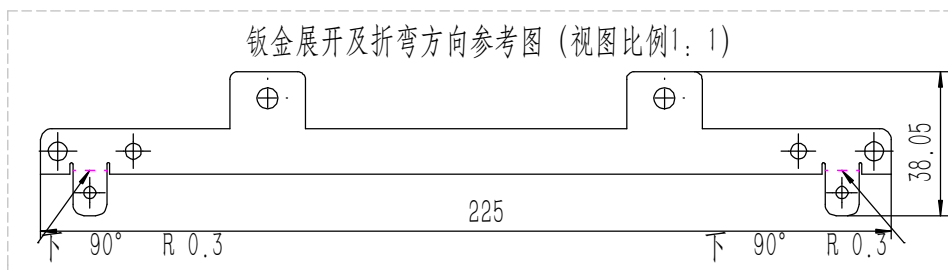
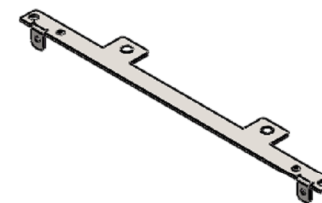
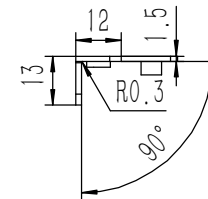
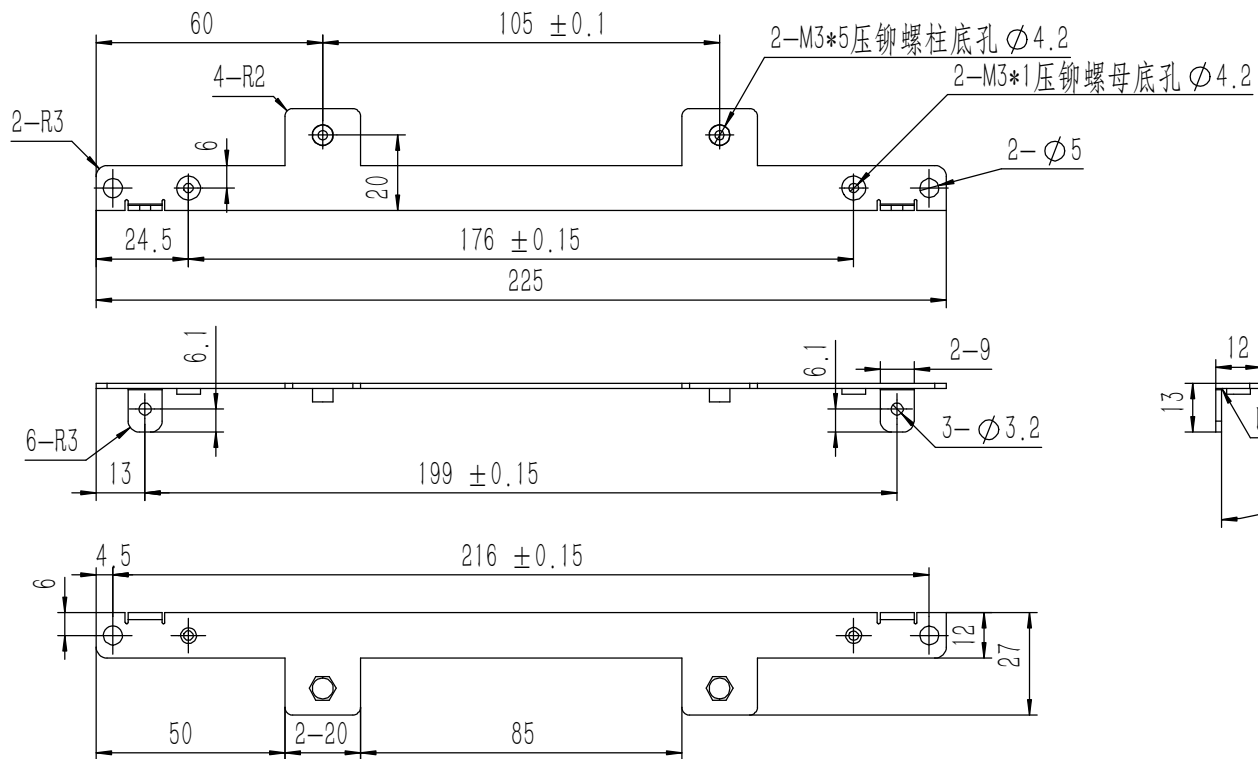
**YONGU** 永固



技术要求:

- 1、零件加工表面不应有划痕、擦伤等损伤零件表面的缺陷;
- 2、去除毛刺飞边, 锐角倒钝;
- 3、未标注尺寸见3D数模。

Tolerances (未注公差): 0.5 to 6 ± 0.1 6 to 30 ± 0.2 30 to 120 ± 0.3 120 to 400 ± 0.4	Material (材料): 6063-T5	<b>YONGU</b> 永固	
	Weight: (重量) (Kg) 0.070		
Break sharp edges (未注锐边倒角): Ch 0.05 to 0.25 x45°	Protection: (表面处理):	Part Name (零/部件名称): 拉手-2U	
	Position tolerances (未注位置公差): ±0.05	Angular tolerances (未注角度公差): <6° ± 10' <30° ± 20' <120° ± 30' >120° ± 1°	Drawing Number (图号): YG-TY-A06-001
	Drawn by (绘图): 邓展锋	Date (日期): 2020.05.18	Size: (图幅): A4
	Check by (校对):	Date (日期):	Scale (比例): 1:1
	Signature by (批准):	Date (日期):	Revision (版本): A1
			Sheet (页数): 1 / 1



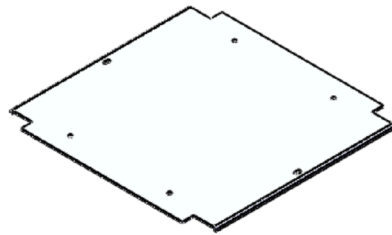
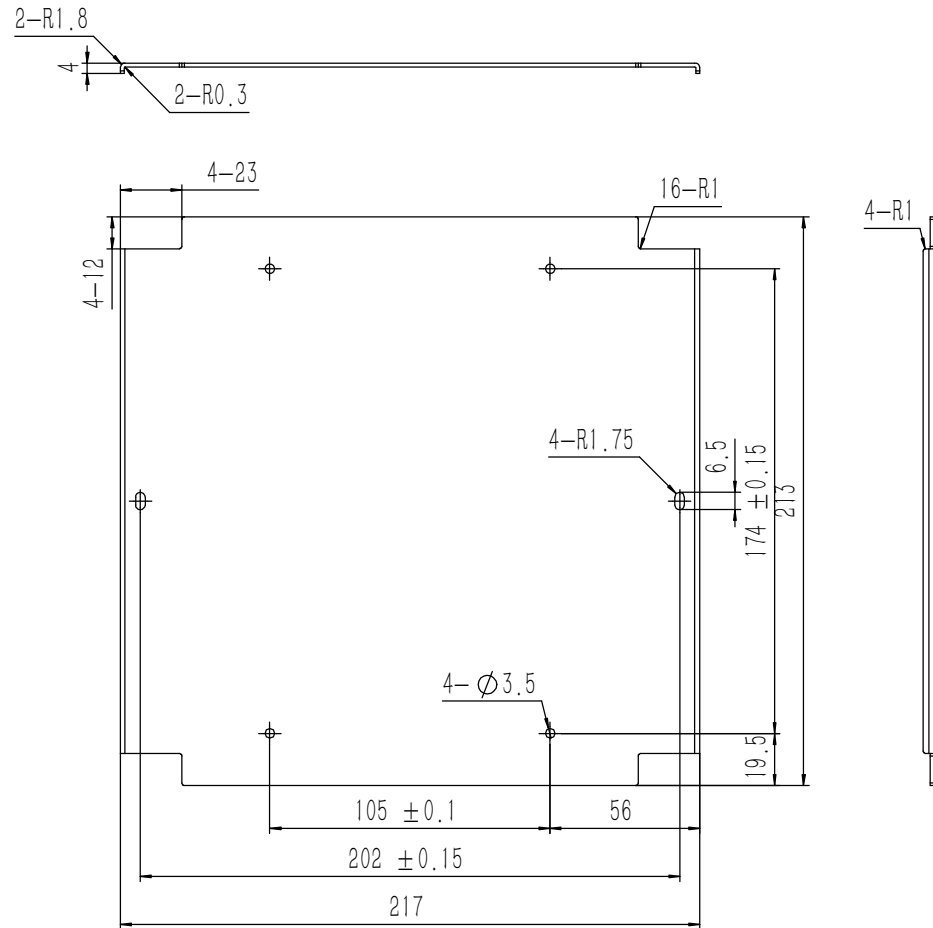
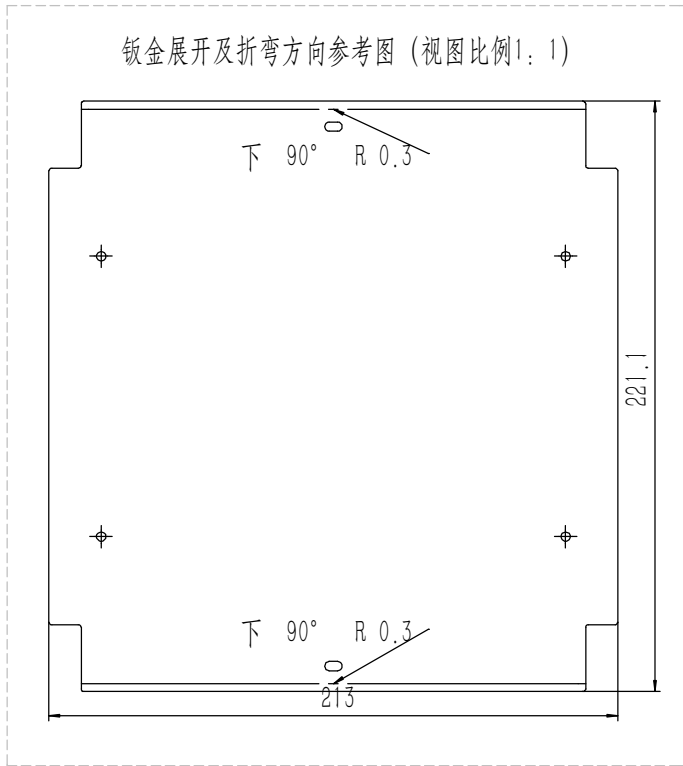
业务代码:

技术要求:

- 1、零件加工表面不应有划痕、擦伤等损伤零件表面的缺陷;
- 2、去除毛刺飞边,锐角倒钝;
- 3、未标注尺寸见3D数模。

Tolerances (未注公差): 0.5 to 6 ± 0.1 6 to 30 ± 0.2 30 to 120 ± 0.3 120 to 400 ± 0.4	Material (材料): (装配图)	YONGU 永固	Drawing Number (图号): YG-TY-A11-001		
	Weight: (重量) (Kg): 0.041				
Break sharp edges (未注锐边倒角): Ch 0.05 to 0.25 x45°	Protection: (表面处理): 毛坯	Part Name (零/部件名称): 面板下固定件1	Size: (图幅): A2		
	Angular tolerances (未注角度公差): <6° ± 10' <30° ± 20' <120° ± 30' >120° ± 1°			Drawn by (绘图): 许宏彬	Date (日期): 2020.09.18
Position tolerances (未注位置公差): ±0.05	Part Name (零/部件名称): 面板下固定件1	Signature by (批准):	Date (日期):	Revision (版本): A1	Sheet (页数): 1 / 1

钣金展开及折弯方向参考图 (视图比例1:1)



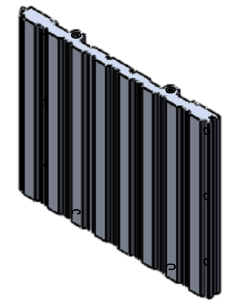
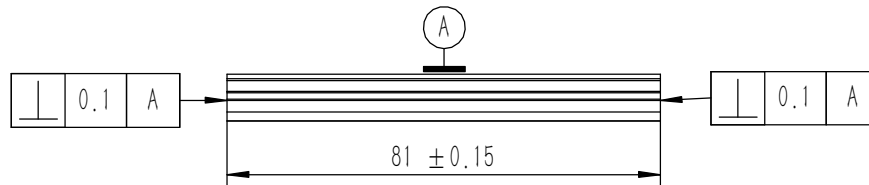
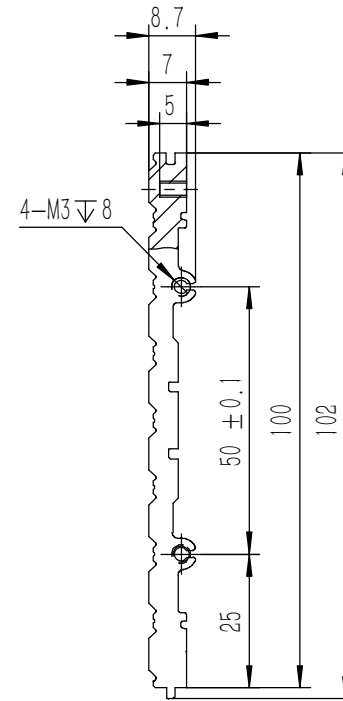
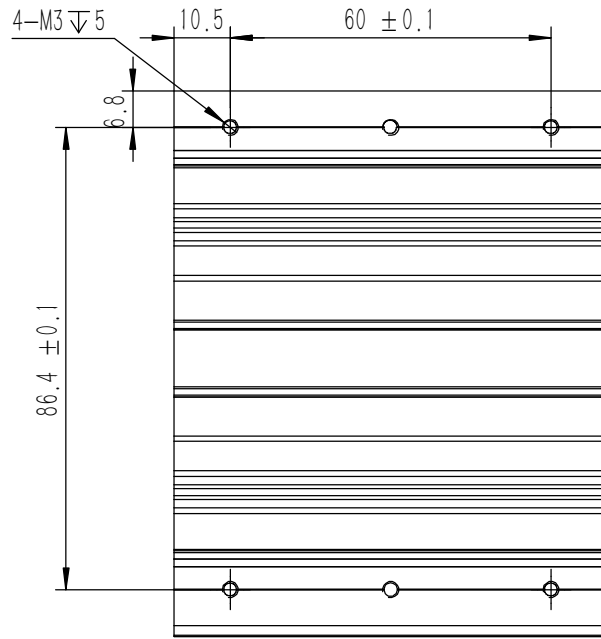
技术要求:

- 1、零件加工表面不应有划痕、擦伤等损伤零件表面的缺陷;
- 2、去除毛刺飞边, 锐角倒钝;
- 3、未标注尺寸见3D数模。

业务代码:

Tolerances (未注公差): 0.5 to 6 ± 0.1 6 to 30 ± 0.2 30 to 120 ± 0.3 120 to 400 ± 0.4	Material (材料):	5052-H32		<b>YONGU</b> 永固
	Weight: (重量) (Kg):	0.184		
Break sharp edges (未注锐边倒角): Ch 0.05 to 0.25 x45°	Protection: (表面处理):	Part Name (零/部件名称):		Drawing Number (图号):
Position tolerances (未注位置公差): ± 0.05	Angular tolerances (未注角度公差): <6° ± 10' <30° ± 20' <120° ± 30' >120° ± 1°	A垫板		YG-TY-A13-001
	Drawn by (绘图): 许宏彬	Date (日期): 2020.09.17	Size: (图幅): A1	Sheet (页数): 1 / 1
	Check by (校对):	Date (日期):	Scale (比例): 1:1	
	Signature by (批准):	Date (日期):	Revision (版本): A1	



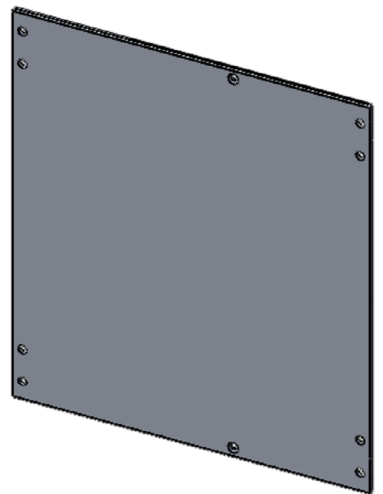
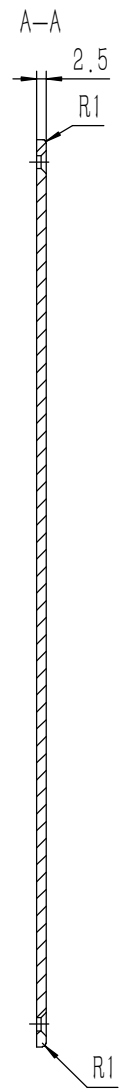
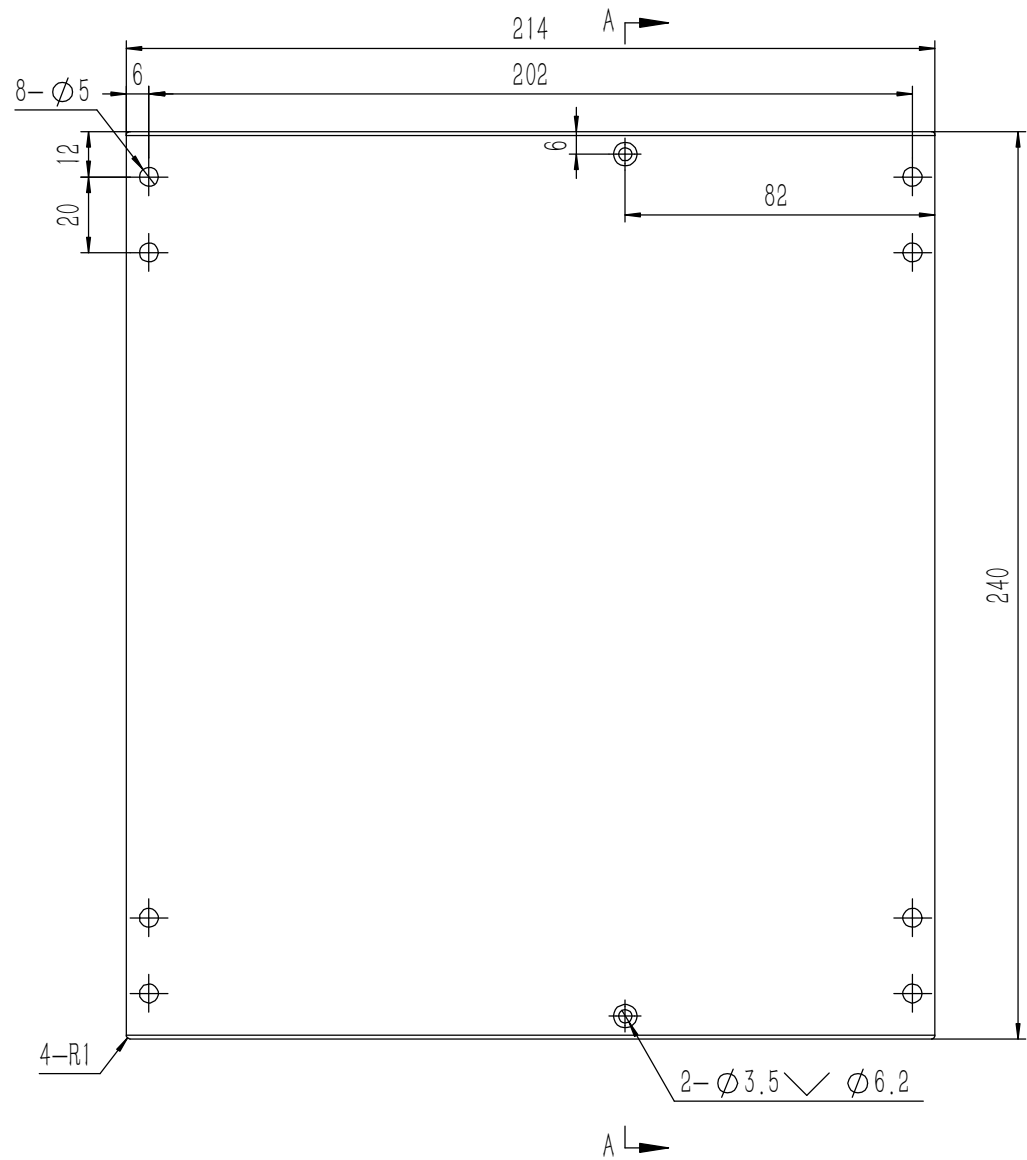


技术要求:

- 1、零件加工表面不应有划痕、擦伤等损伤零件表面的缺陷;
- 2、去除毛刺飞边,锐角倒钝;
- 3、未标注尺寸见3D数模。

Tolerances (未注公差): 0.5 to 6 ± 0.1 6 to 30 ± 0.2 30 to 120 ± 0.3 120 to 400 ± 0.4	Material (材料):	6063-T5	
	Weight: (重量) (Kg)	0.119	
Break sharp edges (未注锐边倒角): Ch 0.05 to 0.25 x45°	Protection: (表面处理):		
	Position tolerances (未注位置公差): ±0.05	Part Name (零/部件名称):	B组合侧板
Angular tolerances (未注角度公差): <6° ± 10' <30° ± 20' <120° ± 30' >120° ± 1°	Part Name (零/部件名称):	B组合侧板	
	Drawing Number (图号):	YG-TY-B03-001	
Drawn by (绘图): 邓展锋	Date (日期): 2020.05.19	Size (图幅): A3	Sheet (页数): 1 / 1
Check by (校对):	Date (日期):	Scale (比例): 1:1	
Signature by (批准):	Date (日期):	Revision (版本): A1	

**YONGU** 永固



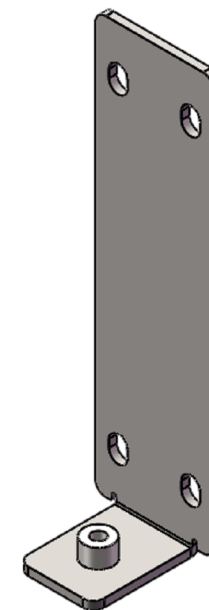
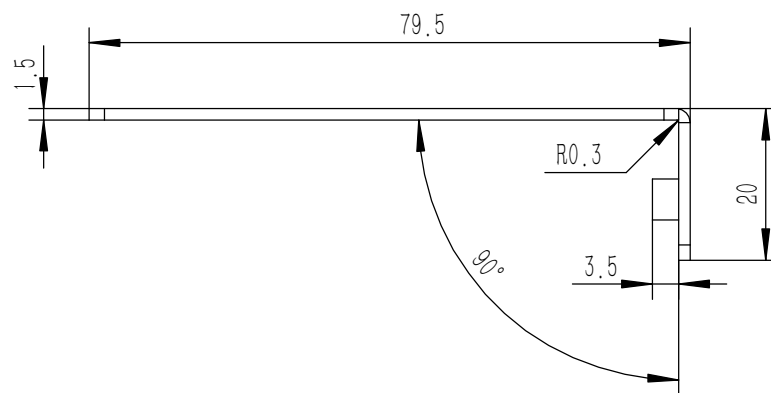
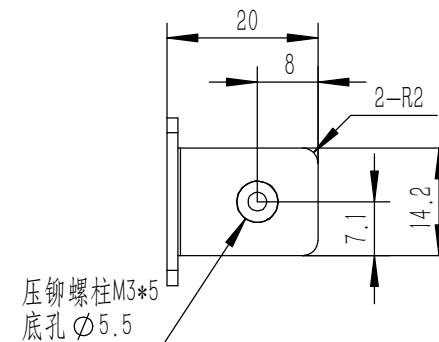
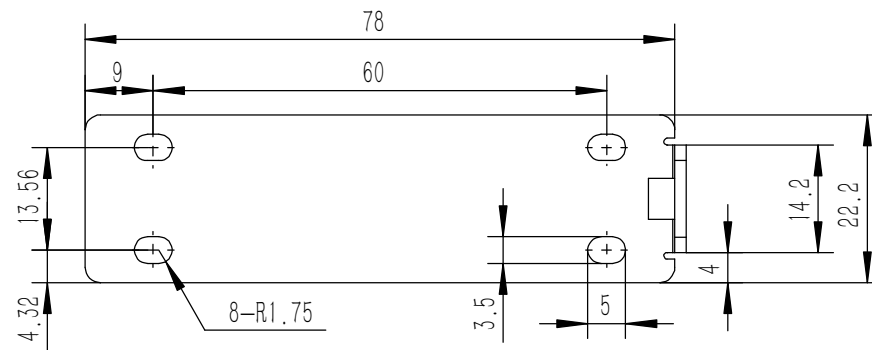
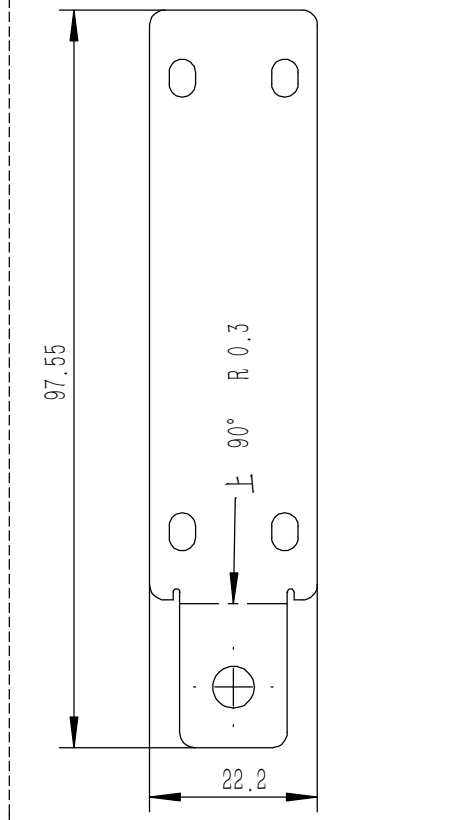
A L

Tolerances (未注公差): 0.5 to 6 ± 0.1 6 to 30 ± 0.2 30 to 120 ± 0.3 120 to 400 ± 0.4	Material (材料):	5052-H32	
	Weight: (重量) (Kg):	0.343	
	Protection: (表面处理):		
	Part Name (零/部件名称):	上下盖板	
Break sharp edges (未注锐边倒角): Ch 0.05 to 0.25 x45°	Angular tolerances (未注角度公差): <6° ± 10' <30° ± 20' <120° ± 30' >120° ± 1°	Drawing Number (图号): YG-TY-B01-001	Size: (图幅): A2
Position tolerances (未注位置公差): ±0.05	Drawn by (绘图): 邓展锋	Date (日期): 2020.05.19	Scale (比例): 1:1
	Check by (校对):	Date (日期):	Revision (版本): A1
	Signature by (批准):	Date (日期):	Sheet (页数): 1 / 1

技术要求:  
 1、零件加工表面不应有划痕、擦伤等损伤零件表面的缺陷;  
 2、去除毛刺飞边,锐角倒钝;  
 3、未标注尺寸见3D数模。



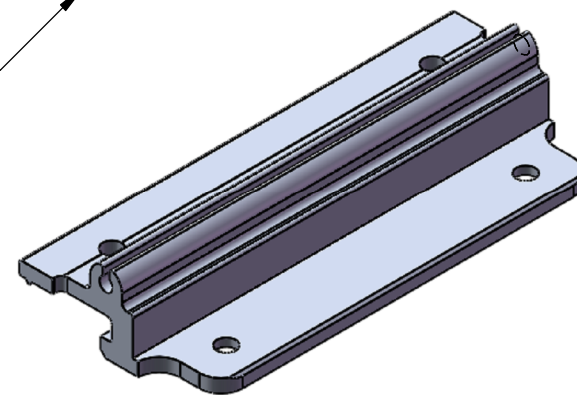
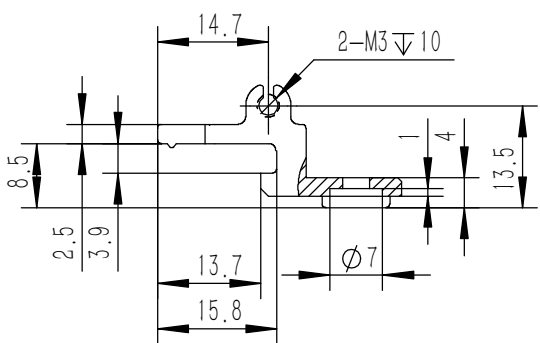
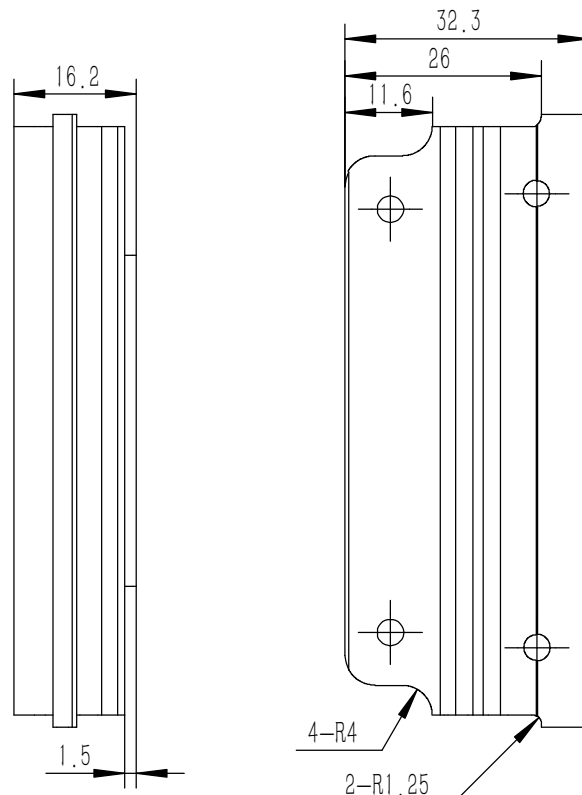
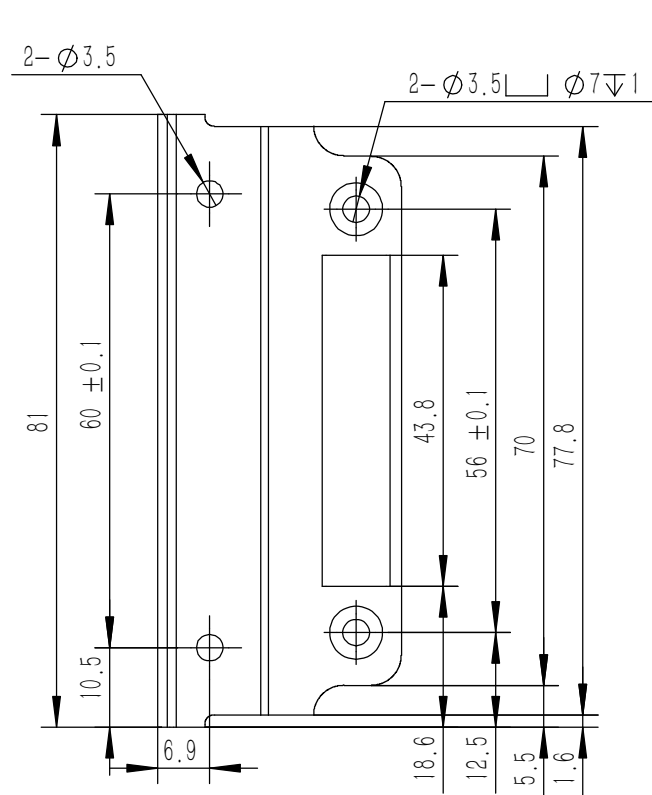
钣金展开及折弯方向参考图(视图比例1:1)



技术要求:

- 1、零件加工表面不应有划痕、擦伤等损伤零件表面的缺陷;
- 2、去除毛刺飞边, 锐角倒钝;
- 3、未标注尺寸见3D数模。

Tolerances (未注公差): 0.5 to 6 ± 0.1 6 to 30 ± 0.2 30 to 120 ± 0.3 120 to 400 ± 0.4	Material (材料): 电解板	<b>YONGU</b> 永固	
	Weight: (重量) (Kg) 0.023		
Break sharp edges (未注锐边倒角): Ch 0.05 to 0.25 x45°	Protection: (表面处理):	Drawing Number (图号): YG-TY-A09-001	
	Position tolerances (未注位置公差): ±0.05	Part Name (零/部件名称): 侧板连接件 2U	Scale (比例): 1:1
Angular tolerances (未注角度公差): <6° ± 10' <30° ± 20' <120° ± 30' >120° ± 1°	Drawn by (绘图): 莫永康	Date (日期): 2020.05.19	Sheet (页数): 1 / 5
	Check by (校对):	Date (日期):	Revision (版本): A1
	Signature by (批准):	Date (日期):	

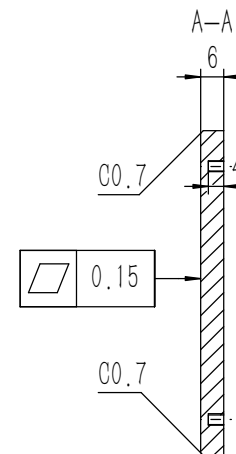
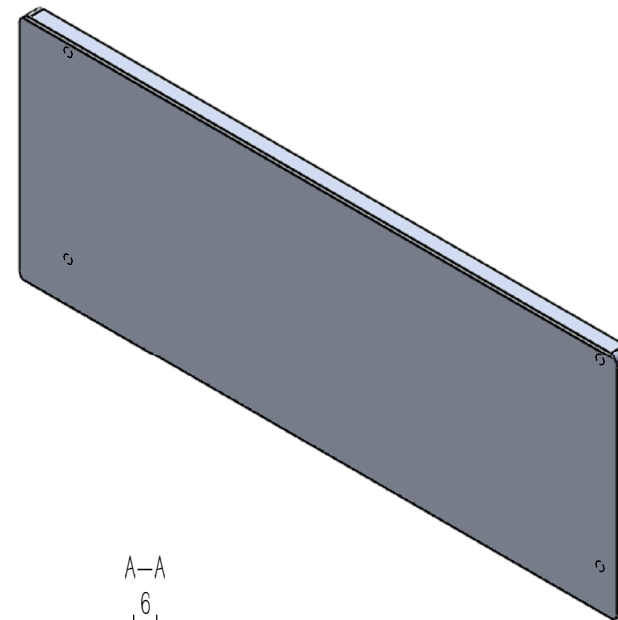
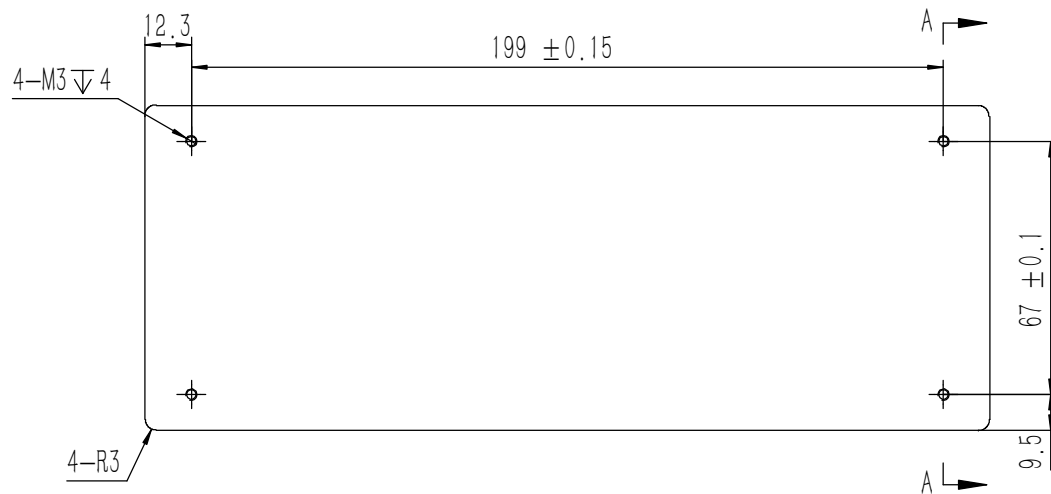
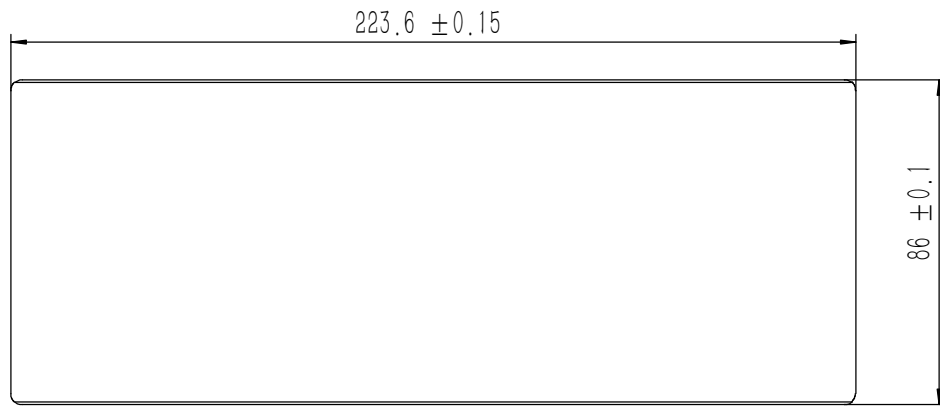


技术要求:

- 1、零件加工表面不应有划痕、擦伤等损伤零件表面的缺陷;
- 2、去除毛刺飞边, 锐角倒钝;
- 3、未标注尺寸见3D数模。

Tolerances (未注公差): 0.5 to 6 ± 0.1 6 to 30 ± 0.2 30 to 120 ± 0.3 120 to 400 ± 0.4	Material (材料):	6063-T5	
	Weight: (重量) (Kg)	0.029	
	Protection: (表面处理):		
	Part Name (零/部件名称):	侧板固定件-2U	
Break sharp edges (未注锐边倒角): Ch 0.05 to 0.25 x45°	Angular tolerances (未注角度公差): <6° ± 10' <30° ± 20' <120° ± 30' >120° ± 1°	Drawing Number (图号): YG-TY-A08-001	Size: (图幅): A4
Position tolerances (未注位置公差): ±0.05	Drawn by (绘图): 邓展锋	Date (日期): 2020.05.18	Sheet (页数):
	Check by (校对):	Date (日期):	Scale (比例): 1:1
	Signature by (批准):	Date (日期):	Revision (版本): A1
			0 / 0

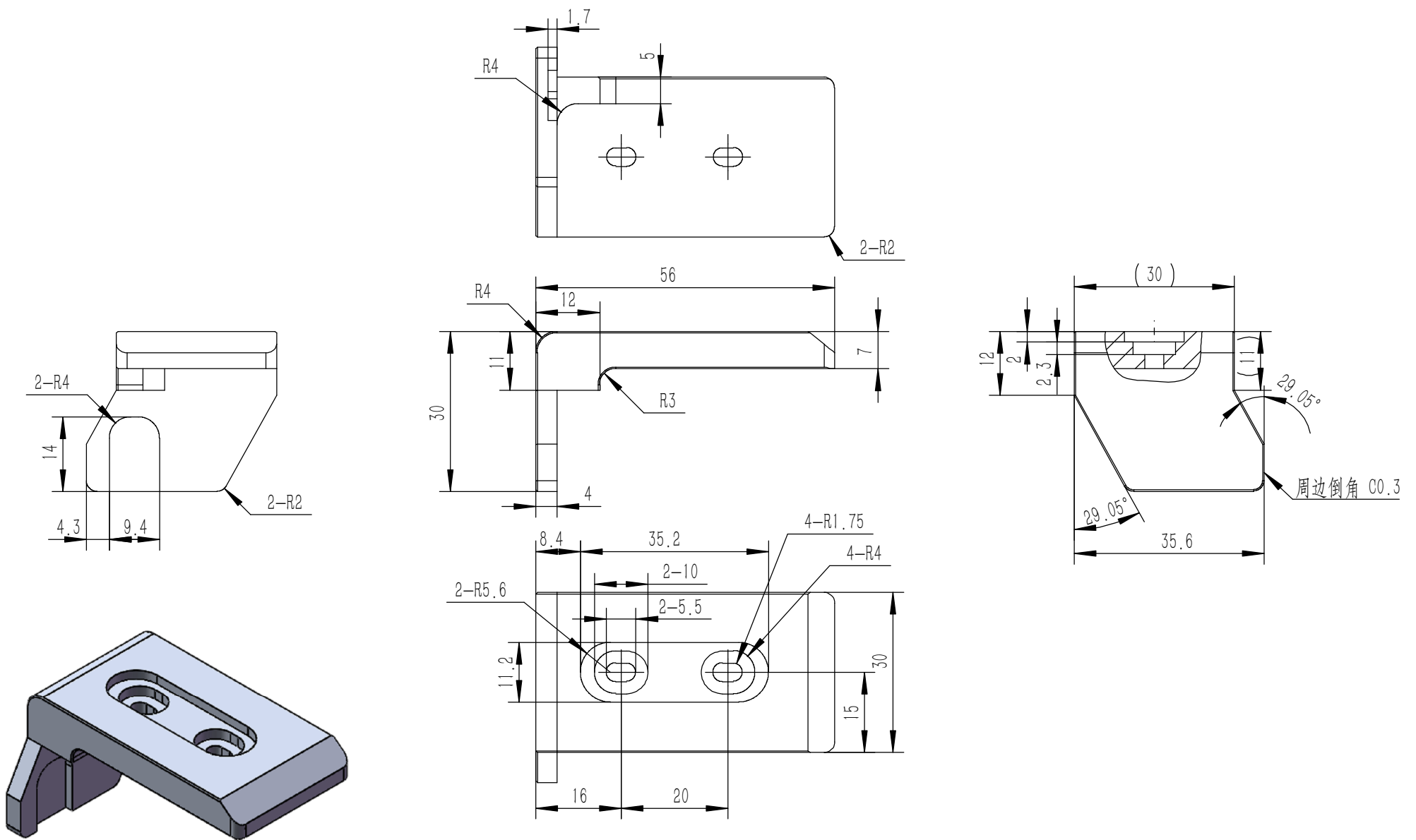
**YONGU** 永固



- 技术要求:
- 1、零件加工表面不应有划痕、擦伤等损伤零件表面的缺陷;
  - 2、去除毛刺飞边,锐角倒钝;
  - 3、未标注尺寸见3D数模。

Tolerances (未注公差):	Material (材料):	5052-H32	
	0.5 to 6 ± 0.1	Weight: (重量) (Kg):	0.309
6 to 30 ± 0.2	Protection: (表面处理):		
30 to 120 ± 0.3	Part Name (零/部件名称):	前后面板-2U	
120 to 400 ± 0.4	Part Name (零/部件名称):	前后面板-2U	
Break sharp edges (未注锐边倒角): Ch 0.05 to 0.25 x45°	Angular tolerances (未注角度公差):	Drawing Number (图号):	YG-TY-A12-001
Position tolerances (未注位置公差): ±0.05	<6° ± 10' <30° ± 20' <120° ± 30' >120° ± 1°	Drawn by (绘图): 莫永康	Date (日期): 2020.05.18
		Check by (校对):	Date (日期):
		Signature by (批准):	Date (日期):
		Size (图幅): A2	Scale (比例): 1:1
		Revision (版本): A1	Sheet (页数): 1 / 1

**YONGU** 永固



技术要求:  
 1、零件加工表面不应有划痕、擦伤等损伤零件表面的缺陷;  
 2、去除毛刺飞边, 锐角倒钝;  
 3、未标注尺寸见3D数模。

Tolerances (未注公差): 0.5 to 6 ± 0.1 6 to 30 ± 0.2 30 to 120 ± 0.3 120 to 400 ± 0.4	Material (材料):	6063-T5	
	Weight: (重量) (Kg)	0.035	
Break sharp edges (未注锐边倒角): Ch 0.05 to 0.25 x45° Position tolerances (未注位置公差): ±0.05	Protection: (表面处理):		
	Part Name (零/部件名称):	B包角1	
Angular tolerances (未注角度公差): <6° ± 10' <30° ± 20' <120° ± 30' >120° ± 1°	Part Name (零/部件名称):	B包角1	
	Drawing Number (图号):	YG-TY-B05-001	
Drawn by (绘图):	Date (日期):	2020.05.18	Size: (图幅): A4
Check by (校对):	Date (日期):		Scale (比例): 1:1
Signature by (批准):	Date (日期):		Revision (版本): A1
			Sheet (页数): 1 / 1

**YONGU** 永固