

16	YG-C17A-0000-002	后面板 1U	6063-T5	1	0.206	
15	YG-C17A-0000-006	组合侧板 1U-50	6063-T5	2	0.044	
14	GB-T-819.1-2000-C-NI-M3X6	碳钢镀镍十字沉头螺丝M3X6	普通碳钢	12	0.0004	
13	YG-C17A-0000-005	组合侧板 1U-100	6063-T5	4	0.084	
12	YG-C17A-0000-009	侧板固定件 1U	6063-T5	4	0.014	
11	YG-C17A-0000-001	前面板 1U	6063-T5	1	0.222	
10	YG-C17A-0000-004	垫板	5052-H32	1	0.305	
9	GB-T-70.3-2000-C-NI-M3X6	芳生镀白镍内六角沉头螺丝M3X6	普通碳钢	16	0.0004	
8	GB-T-819.1-2000-C-NI-M4X8	碳钢镀镍十字沉头螺丝M4X8	普通碳钢	8	0.001	
7	GB-T-973-1976-C-NI-M3X6	碳钢镀镍十字大扁头螺丝M3X6	普通碳钢	8	0.0006	
6	GB-T-973-1976-C-NI-M3X4	碳钢镀镍十字大扁头螺丝M3X4	普通碳钢	16	0.0005	
5	盲孔压铆螺柱镀白锌M3X5	压铆螺柱 M3X5	普通碳钢	4	0.001	
4	YG-C17A-0000-010	侧板连接件 1U	电解板	4	0.012	
3	YG-C17A-0000-007	拉手 1U	6063-T5	2	0.042	
2	YG-C17A-0000-003	盖板	5052-H32	2	0.608	
1	YG-C17A-0000-008	后防护条 1U	6063-T5	2	0.017	
序号	图号	名称	材料	数量	单重	备注

技术要求:

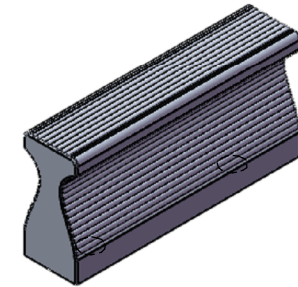
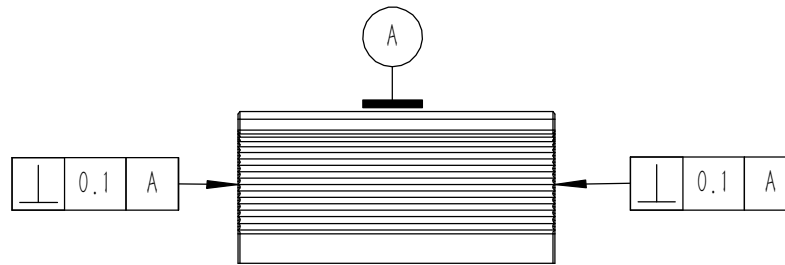
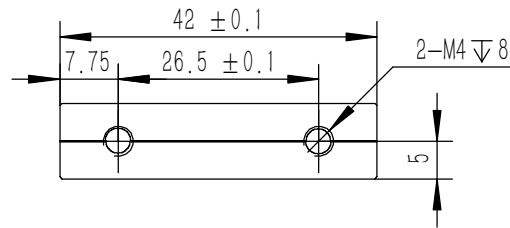
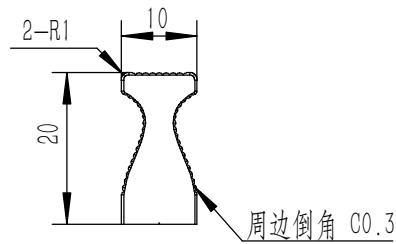
- 1、必须按照设计、工艺要求及本规定和有关标准进行装配;
- 2、所有零部件(包括外购、外协件)必须具有检验合格证方能进行装配;
- 3、零件在装配前必须清理和清洗干净,不得有毛刺、飞边、氧化皮、锈蚀、切屑、砂粒、灰尘和油污等,并应符合相应清洁度要求;
- 4、装配过程中零件不得磕碰、划伤和锈蚀;
- 5、油漆未干的零件不得进行装配;
- 6、相对运动的零件,装配时接触面间应加润滑油脂;
- 7、各零、部件装配后相对位置应准确。

Break sharp edges (未注锐边倒角): Ch 0.05 to 0.25 x45°	Angular tolerances (未注角度公差): <6° ± 10' <30° ± 20' <120° ± 30' >120° ± 1°
Position tolerances (未注位置公差): ± 0.05	

Tolerances (未注公差): 0.5 to 6 ± 0.1 6 to 30 ± 0.2 30 to 120 ± 0.3 120 to 400 ± 0.4	Material (材料): (装配图)
Weight: (重量) (Kg): 2.626	Protection: (表面处理):
Part Name (零/部件名称):	

YONGU 永固

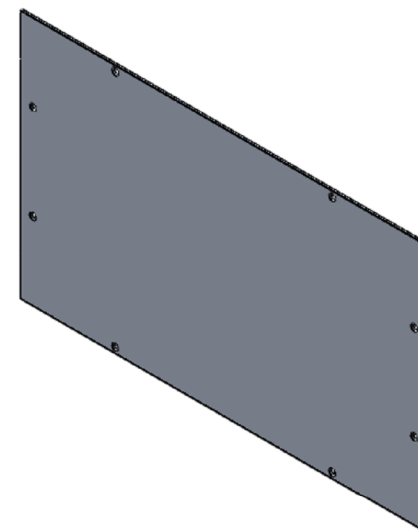
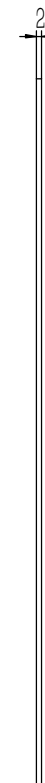
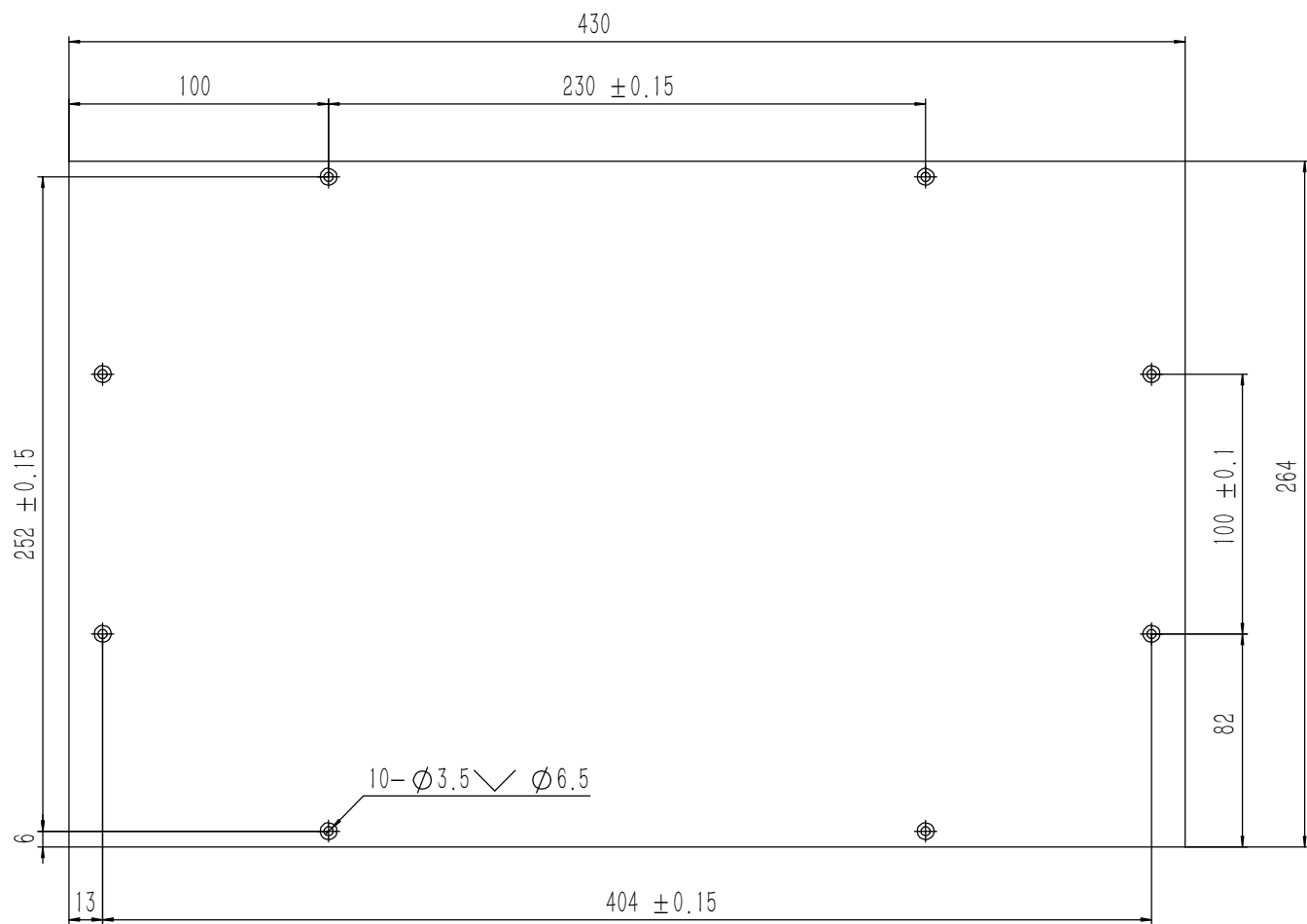
C17A机箱		Drawing Number (图号): YG-C17A-0000-000	
Drawn by (绘图): 莫永康	Date (日期): 2020.05.25	Size (图幅): A0	Sheet (页数): 1 / 1
Check by (校对):	Date (日期):	Scale (比例): 1:1.5	
Signature by (批准):	Date (日期):	Revision (版本): A1	



技术要求:

- 1、零件加工表面不应有划痕、擦伤等损伤零件表面的缺陷;
- 2、去除毛刺飞边, 锐角倒钝;
- 3、未标注尺寸见3D数模。

Tolerances (未注公差): 0.5 to 6 ± 0.1 6 to 30 ± 0.2 30 to 120 ± 0.3 120 to 400 ± 0.4	Material (材料): 6063-T5	YONGU 永固	
	Weight: (重量) (Kg) 0.017		
Break sharp edges (未注锐边倒角): Ch 0.05 to 0.25 x45°	Part Name (零/部件名称): 后防护条 1U		Drawing Number (图号): YG-C17A-0000-008
	Position tolerances (未注位置公差): ±0.05	Angular tolerances (未注角度公差): <6° ± 10' <30° ± 20' <120° ± 30' >120° ± 1°	Part Name (零/部件名称): 后防护条 1U
	Drawn by (绘图): 莫永康	Date (日期): 2020.05.25	Sheet (页数): 1 / 1
	Check by (校对):	Date (日期):	Revision (版本): A1
	Signature by (批准):	Date (日期):	

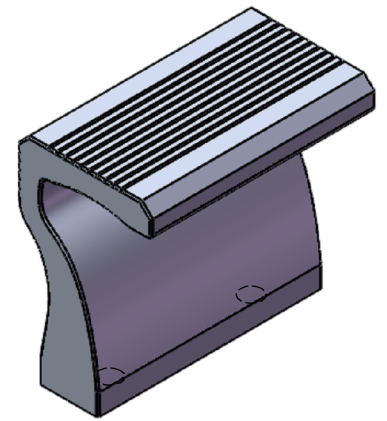
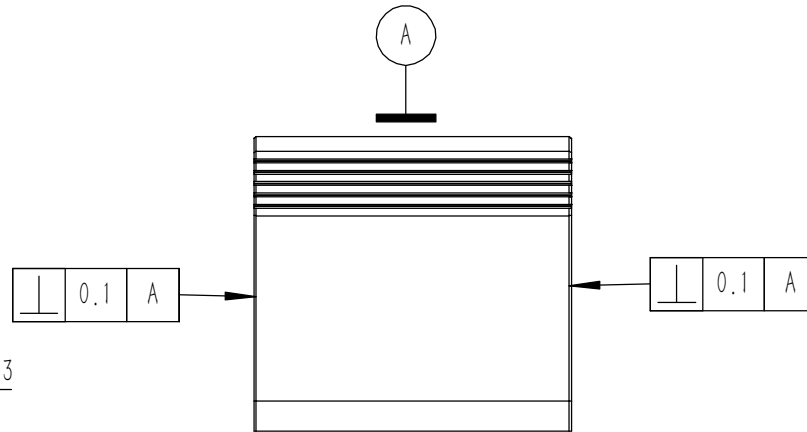
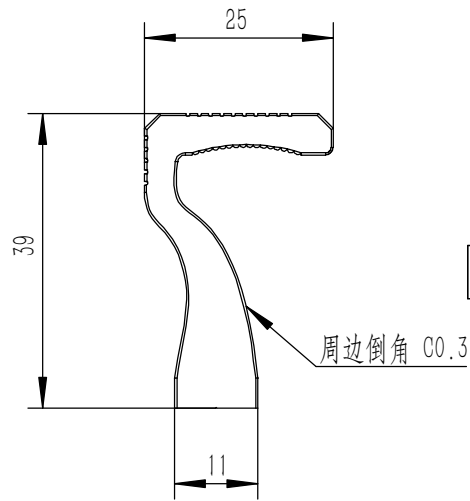
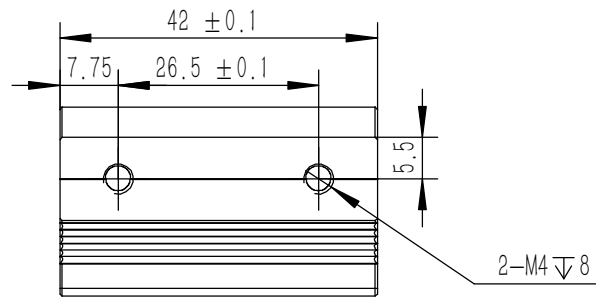


技术要求:

- 1、零件加工表面不应有划痕、擦伤等损伤零件表面的缺陷;
- 2、去除毛刺飞边, 锐角倒钝;
- 3、未标注尺寸见3D数模。

Tolerances (未注公差): 0.5 to 6 ± 0.1 6 to 30 ± 0.2 30 to 120 ± 0.3 120 to 400 ± 0.4	Material (材料):	5052-H32	
	Weight: (重量) (Kg):	0.608	
Break sharp edges (未注锐边倒角): Ch 0.05 to 0.25 x45°	Protection: (表面处理):		
	Part Name (零/部件名称):	盖板	
Position tolerances (未注位置公差): ± 0.05	Part Name (零/部件名称):	盖板	
	Angular tolerances (未注角度公差): <6° ± 10' <30° ± 20' <120° ± 30' >120° ± 1°	Part Name (零/部件名称):	盖板
Drawing Number (图号): YG-C17A-0000-003	Drawn by (绘图):	莫永康	Date (日期): 2020.05.25
	Scale (比例):	1:1	Revision (版本): A1
Sheet (页数): 1 / 1	Check by (校对):		Date (日期):
	Signature by (批准):		Date (日期):

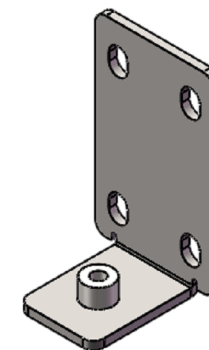
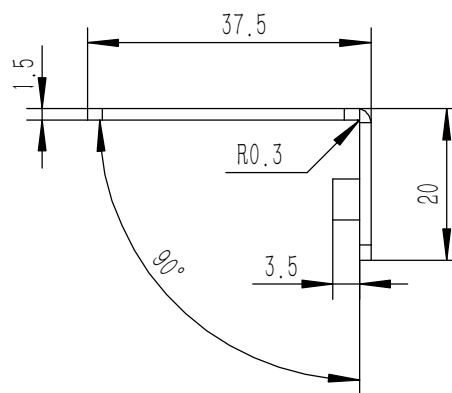
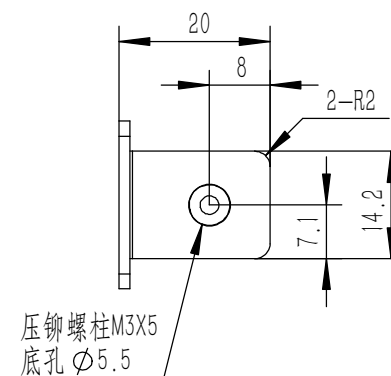
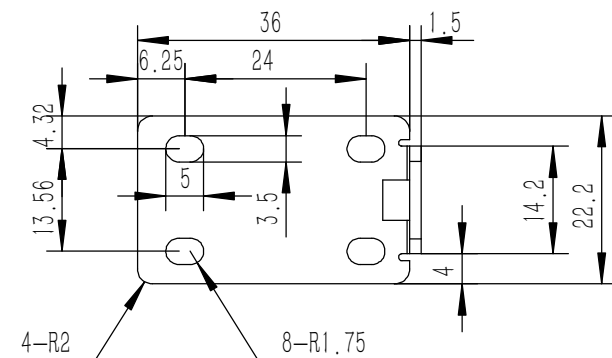
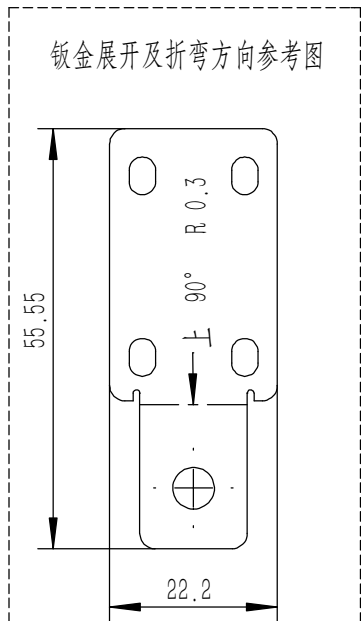
YONGU 永固



技术要求:

- 1、零件加工表面不应有划痕、擦伤等损伤零件表面的缺陷;
- 2、去除毛刺飞边, 锐角倒钝;
- 3、未标注尺寸见3D数模。

Tolerances (未注公差): 0.5 to 6 ± 0.1 6 to 30 ± 0.2 30 to 120 ± 0.3 120 to 400 ± 0.4	Material (材料): 6063-T5	YONGU 永固	
	Weight: (重量) (Kg) 0.042		
Break sharp edges (未注锐边倒角): Ch 0.05 to 0.25 x45°	Protection: (表面处理):	Part Name (零/部件名称): 拉手 1U	
	Position tolerances (未注位置公差): ±0.05	Drawing Number (图号): YG-C17A-0000-007	
Angular tolerances (未注角度公差): <6° ± 10' <30° ± 20' <120° ± 30' >120° ± 1°	Drawn by (绘图): 莫永康	Date (日期): 2020.05.25	Size: (图幅): A4
	Check by (校对):	Date (日期):	Scale (比例): 1:1
	Signature by (批准):	Date (日期):	Revision (版本): A1
		Sheet (页数): 1 / 1	

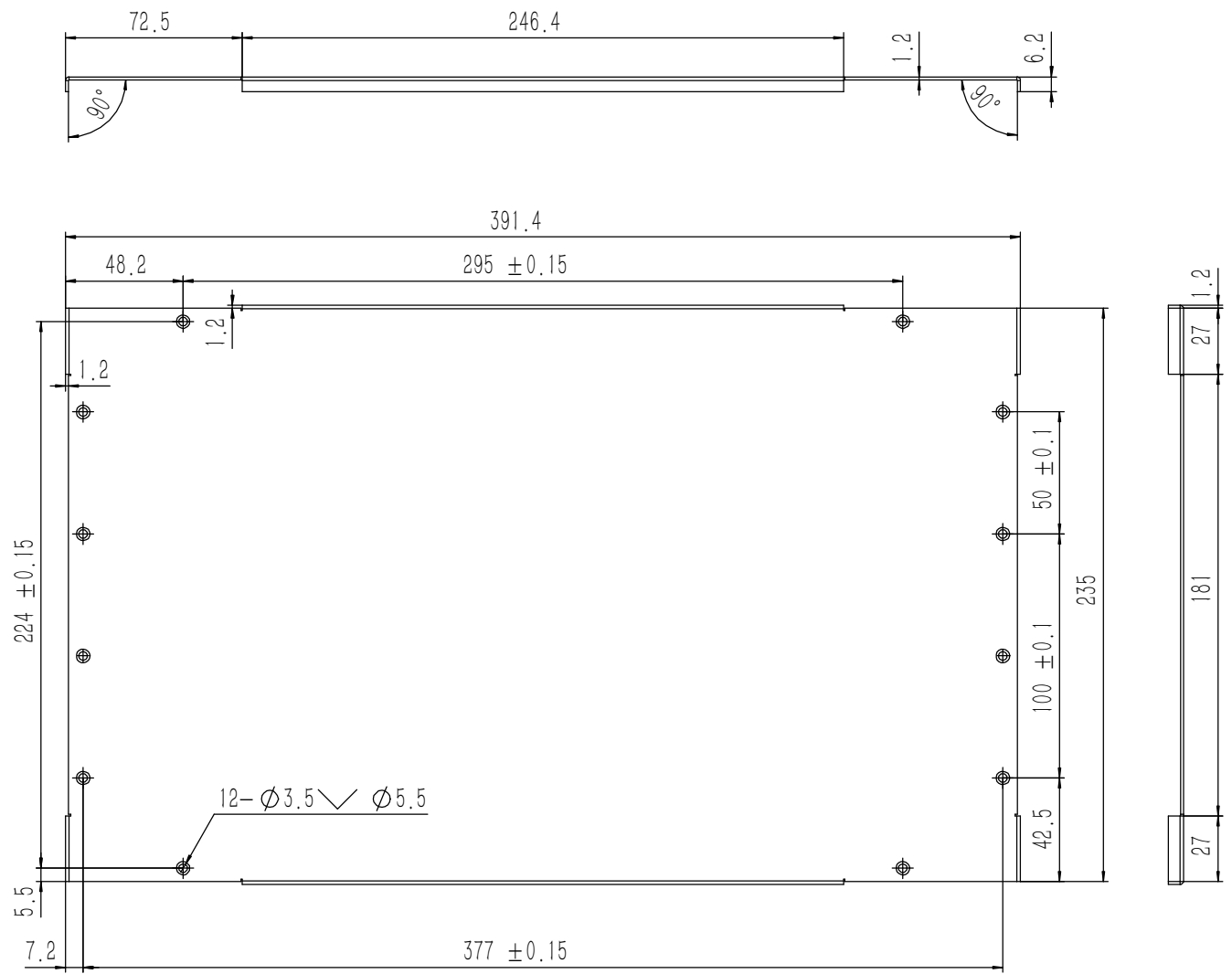
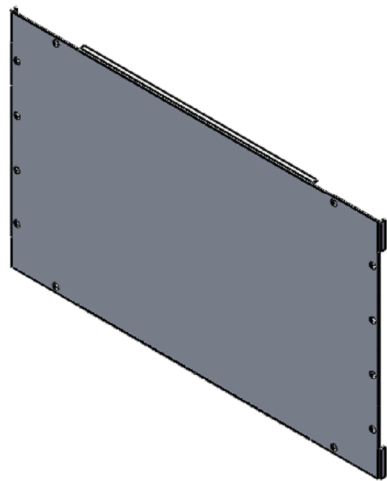
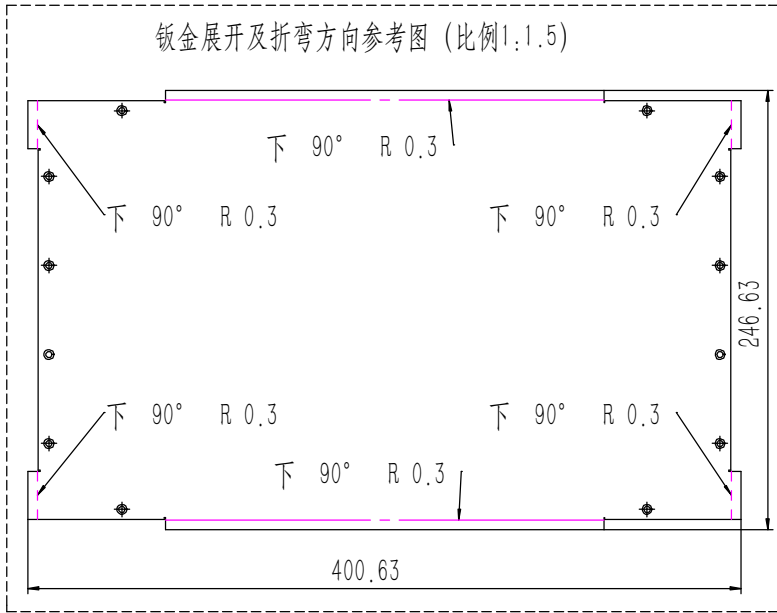


技术要求:

- 1、零件加工表面不应有划痕、擦伤等损伤零件表面的缺陷;
- 2、去除毛刺飞边, 锐角倒钝;
- 3、未标注尺寸见3D数模。

Tolerances (未注公差): 0.5 to 6 ± 0.1 6 to 30 ± 0.2 30 to 120 ± 0.3 120 to 400 ± 0.4	Material (材料): 电解板	YONGU 永固	
	Weight: (重量) (Kg) 0.012		
Break sharp edges (未注锐边倒角): Ch 0.05 to 0.25 x45°	Protection: (表面处理):	Part Name (零/部件名称): 侧板连接件 1U	
	Position tolerances (未注位置公差): ±0.05	Angular tolerances (未注角度公差): <6° ± 10' <30° ± 20' <120° ± 30' >120° ± 1'	Part Name (零/部件名称): 侧板连接件 1U
	Material (材料): 电解板	Drawing Number (图号): YG-C17A-0000-010	
	Weight: (重量) (Kg) 0.012	Drawn by (绘图): 莫永康	Date (日期): 2020.05.25
	Protection: (表面处理):	Check by (校对):	Date (日期):
	Part Name (零/部件名称): 侧板连接件 1U	Signature by (批准):	Date (日期):
		Scale (比例): 1:1	Sheet (页数): 1 / 1
		Revision (版本): A1	

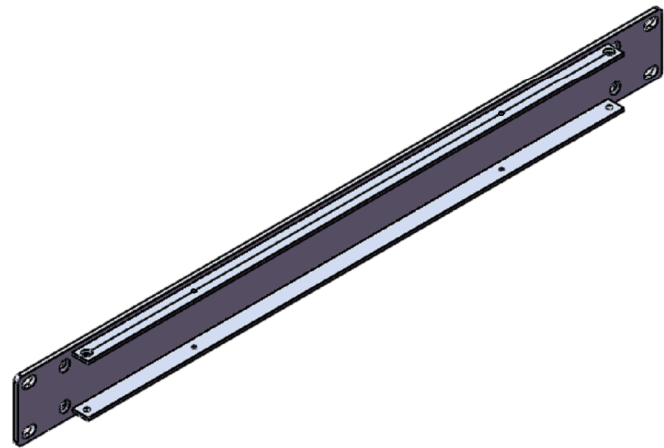
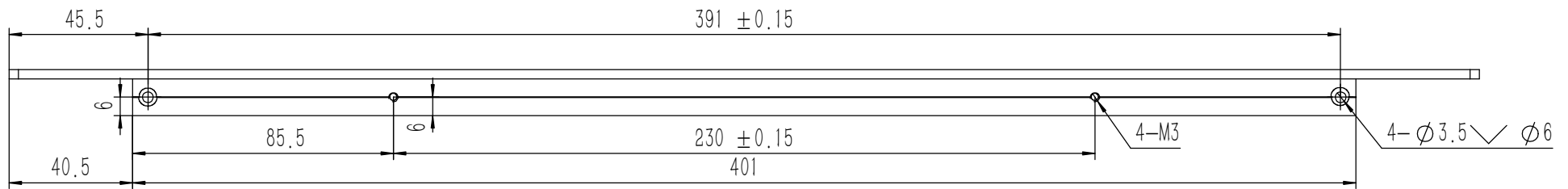
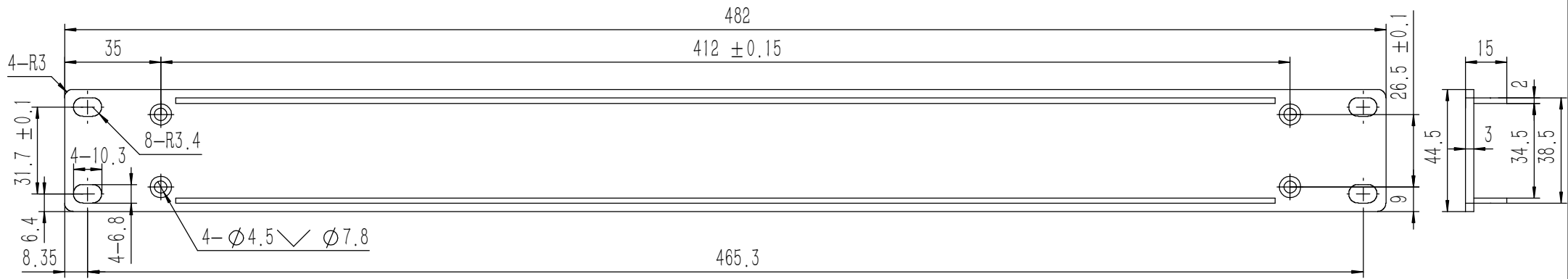
钣金展开及折弯方向参考图 (比例1:1.5)



- 技术要求:
- 1、零件加工表面不应有划痕、擦伤等损伤零件表面的缺陷;
 - 2、去除毛刺飞边, 锐角倒钝;
 - 3、未标注尺寸见3D数模。

Tolerances (未注公差): 0.5 to 6 ± 0.1 6 to 30 ± 0.2 30 to 120 ± 0.3 120 to 400 ± 0.4	Material (材料):	5052-H32		
	Weight: (重量) (Kg):	0.305		
Break sharp edges (未注锐边倒角): Ch 0.05 to 0.25 x45°	Protection: (表面处理):			
	Position tolerances (未注位置公差):	± 0.05		
Angular tolerances (未注角度公差): <6° ± 10' <30° ± 20' <120° ± 30' >120° ± 1°	Part Name (零/部件名称):	垫板		
	Drawing Number (图号): YG-C17A-0000-004	Drawn by (绘图): 莫永康 Date (日期): 2020.05.25	Size: (图幅): A1 Scale (比例): 1:1	Sheet (页数): 1 / 1
	Signature by (批准): Date (日期):	Date (日期): Date (日期):	Revision (版本): A1	



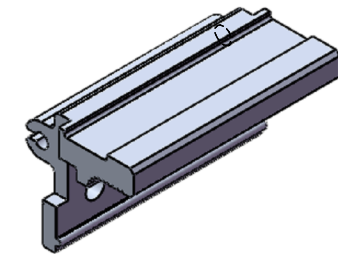
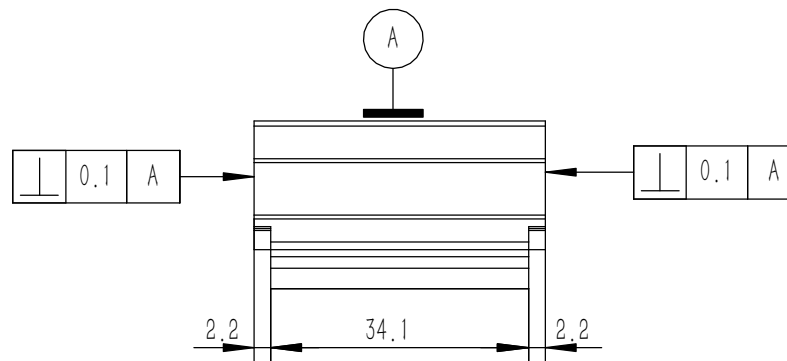
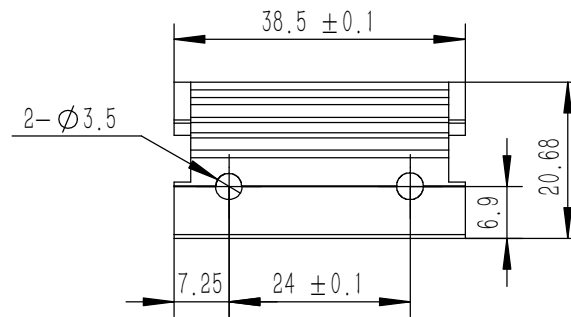
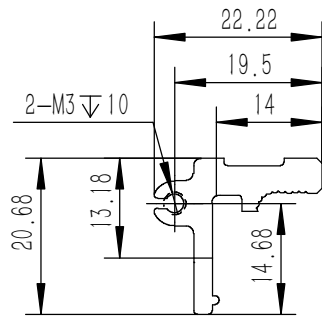


技术要求:

- 1、零件加工表面不应有划痕、擦伤等损伤零件表面的缺陷;
- 2、去除毛刺飞边, 锐角倒钝;
- 3、未标注尺寸见3D数模。

Tolerances (未注公差): 0.5 to 6 ± 0.1 6 to 30 ± 0.2 30 to 120 ± 0.3 120 to 400 ± 0.4	Material (材料): 6063-T5	Weight: (重量) (Kg): 0.222	Protection: (表面处理):	Part Name (零/部件名称):	Drawing Number (图号):
Break sharp edges (未注锐边倒角): Ch 0.05 to 0.25 x45°	Angular tolerances (未注角度公差): <6° ± 10' <30° ± 20' <120° ± 30' >120° ± 1°	Drawn by (绘图): 莫永康		Date (日期): 2020.05.25	Size: (图幅): A2
Position tolerances (未注位置公差): ±0.05		Check by (校对):		Date (日期):	Scale (比例): 1:1
		Signature by (批准):		Date (日期):	Revision (版本): A1
					Sheet (页数): 1 / 1

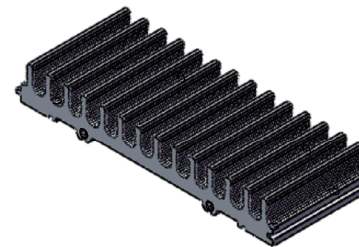
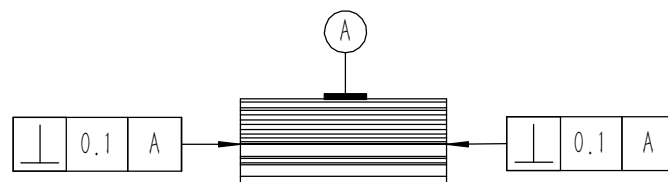
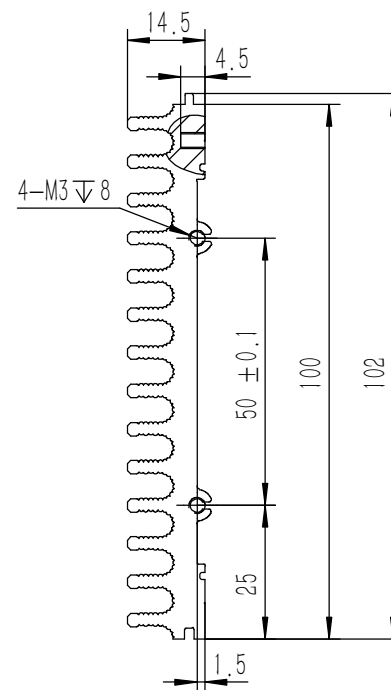
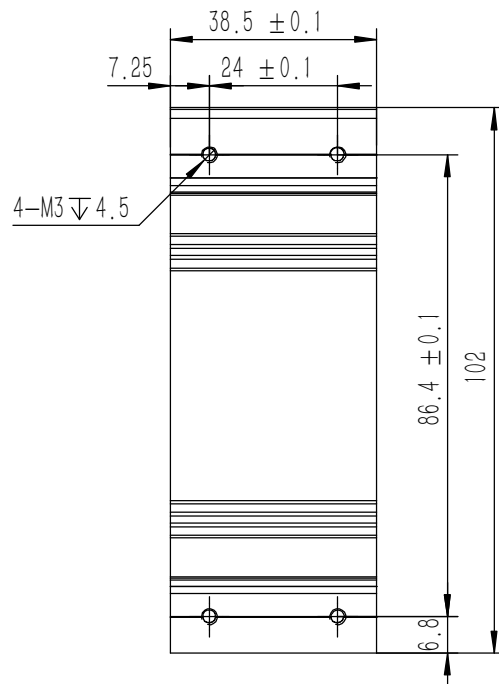
YONGU 永固



技术要求:

- 1、零件加工表面不应有划痕、擦伤等损伤零件表面的缺陷;
- 2、去除毛刺飞边,锐角倒钝;
- 3、未标注尺寸见3D数模。

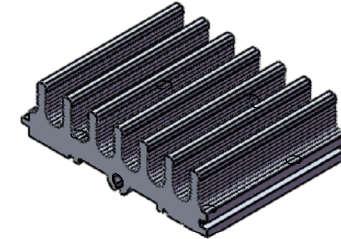
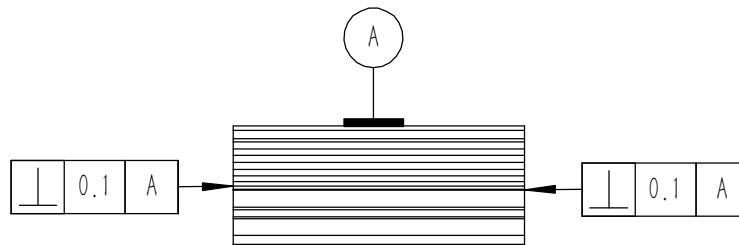
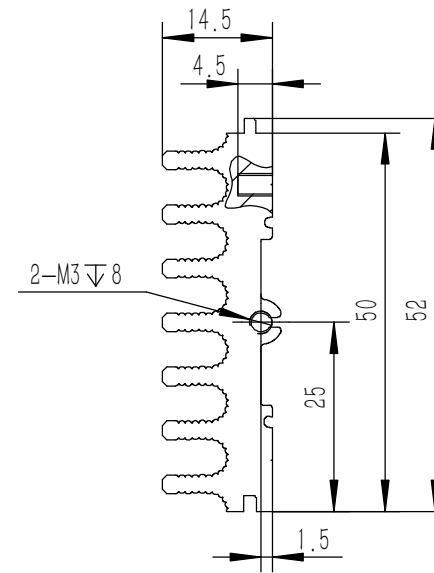
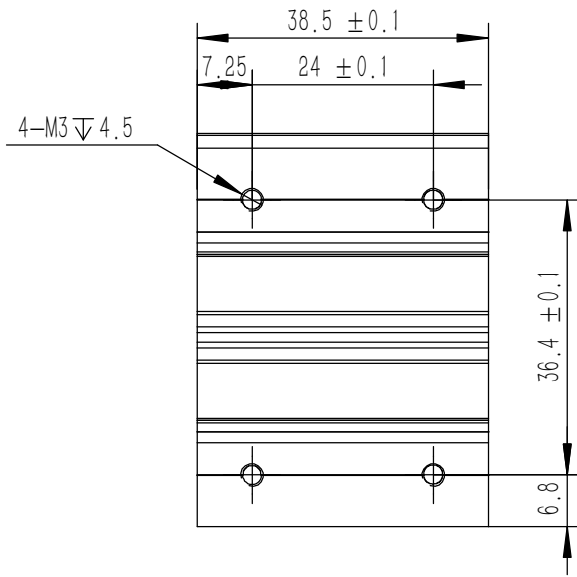
Tolerances (未注公差): 0.5 to 6 ± 0.1 6 to 30 ± 0.2 30 to 120 ± 0.3 120 to 400 ± 0.4	Material (材料): 6063-T5	YONGU 永固	
	Weight: (重量) (Kg) 0.014		
Break sharp edges (未注锐边倒角): Ch 0.05 to 0.25 x45°	Part Name (零/部件名称): 侧板固定件 1U		Drawing Number (图号): YG-C17A-0000-009
	Position tolerances (未注位置公差): ±0.05	Angular tolerances (未注角度公差): <6° ± 10' <30° ± 20' <120° ± 30' >120° ± 1°	Part Name (零/部件名称): 侧板固定件 1U
	Drawn by (绘图): 莫永康	Date (日期): 2020.05.25	Sheet (页数): 1 / 1
	Check by (校对):	Date (日期):	Revision (版本): A1
	Signature by (批准):	Date (日期):	



技术要求:

- 1、零件加工表面不应有划痕、擦伤等损伤零件表面的缺陷;
- 2、去除毛刺飞边,锐角倒钝;
- 3、未标注尺寸见3D数模。

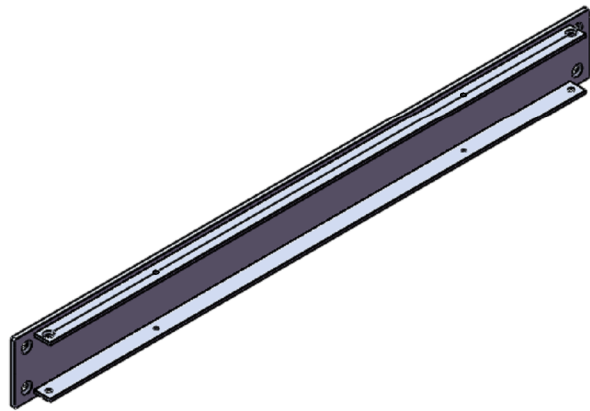
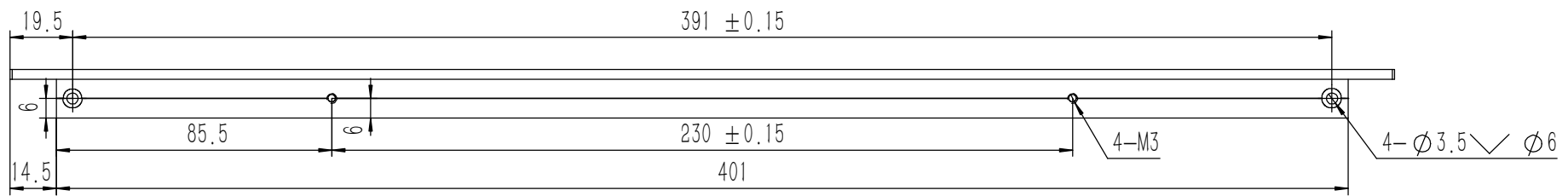
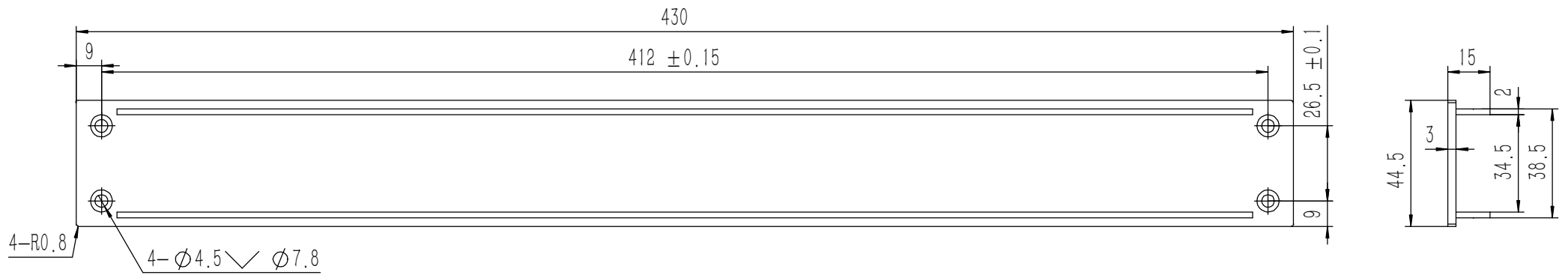
Tolerances (未注公差): 0.5 to 6 ± 0.1 6 to 30 ± 0.2 30 to 120 ± 0.3 120 to 400 ± 0.4	Material (材料):	6063-T5		YONGU 永固
	Weight: (重量) (Kg)	0.084		
Break sharp edges (未注锐边倒角): Ch 0.05 to 0.25 x45°	Protection: (表面处理):			
	Position tolerances (未注位置公差): ±0.05	Part Name (零/部件名称):	组合侧板 1U-100	
Angular tolerances (未注角度公差): <6° ± 10' <30° ± 20' <120° ± 30' >120° ± 1°	Drawn by (绘图):	莫永康	Date (日期):	2020.05.25
	Check by (校对):		Date (日期):	
	Signature by (批准):		Date (日期):	
	Drawing Number (图号):	YG-C17A-0000-005		
	Size (图幅):	A3		Sheet (页数): 1 / 1
	Scale (比例):	1:1		
	Revision (版本):	A1		



技术要求:

- 1、零件加工表面不应有划痕、擦伤等损伤零件表面的缺陷;
- 2、去除毛刺飞边, 锐角倒钝;
- 3、未标注尺寸见3D数模。

Tolerances (未注公差): 0.5 to 6 ± 0.1 6 to 30 ± 0.2 30 to 120 ± 0.3 120 to 400 ± 0.4	Material (材料): 6063-T5	YONGU 永固	
	Weight: (重量) (Kg) 0.044		
Break sharp edges (未注锐边倒角): Ch 0.05 to 0.25 x45°	Protection: (表面处理):	Part Name (零/部件名称): 组合侧板 1U-50	
	Position tolerances (未注位置公差): ±0.05	Angular tolerances (未注角度公差): <6° ± 10' <30° ± 20' <120° ± 30' >120° ± 1°	Drawing Number (图号): YG-C17A-0000-006
	Drawn by (绘图): 莫永康	Date (日期): 2020.05.15	Size: (图幅): A4
	Check by (校对):	Date (日期):	Scale (比例): 1:1
	Signature by (批准):	Date (日期):	Revision (版本): A1
			Sheet (页数): 1 / 1



技术要求:

- 1、零件加工表面不应有划痕、擦伤等损伤零件表面的缺陷;
- 2、去除毛刺飞边,锐角倒钝;
- 3、未标注尺寸见3D数模。

Tolerances (未注公差): 0.5 to 6 ± 0.1 6 to 30 ± 0.2 30 to 120 ± 0.3 120 to 400 ± 0.4	Material (材料): 6063-T5	YONGU 永固
	Weight: (重量) (Kg): 0.206	
Break sharp edges (未注锐边倒角): Ch 0.05 to 0.25 x45°	Protection: (表面处理):	Drawing Number (图号): YG-C17A-0000-002
Angular tolerances (未注角度公差): <6° ± 10' <30° ± 20' <120° ± 30' >120° ± 1°	Part Name (零/部件名称): 后面板 1U	
Position tolerances (未注位置公差): ±0.05	Drawn by (绘图): 莫永康	Date (日期): 2020.05.25
	Check by (校对):	Date (日期):
	Signature by (批准):	Date (日期):
	Scale (比例): 1:1	Sheet (页数): 1 / 1
	Revision (版本): A1	