

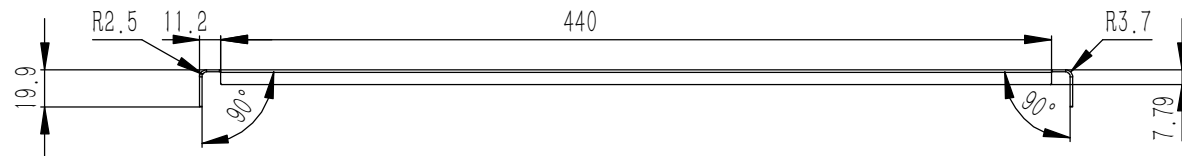
序号	图号	名称	材料	数量	单重	备注
25	GB-T-973-1976-C-NI-M3X14	碳钢镀锌十字大扁头螺丝M3X14	普通碳钢	8	0.001	
24	YG-TY-ZSJ-001	螺丝装饰件 M3	5052-H32	8	0.000	
23	YG-TY-LMT-002	塑料螺母套 M3	ABS	16	0.0001	
22	YG-D07-0000-005	组合侧板	6063-T5	2	0.091	
21	YG-D07-0000-007	组合侧板	6063-T5	2	0.107	
20	YG-D07-0000-006	组合侧板	6063-T5	2	0.223	
19	GB-T-819.1-2000-C-NI-M3X6	碳钢镀锌十字沉头螺丝M3X6	普通碳钢	28	0.0004	
18	YG-D07-0000-004	D安装垫板	电解板	1	1.509	
17	YG-D07-0000-001	前后面板	5052-H32	2	0.504	
16	YG-D07-0000-008	D拉手	6063-T5	2	0.084	
15	GB-T-70.1-2000-S-NL-M3X8	不锈钢内六角杯头螺丝M3X8	SUS 304	16	0.001	
14	GB-T-70.3-2000-C-NI-M3X8	芳生镀白镍内六角沉头螺丝M3X8	普通碳钢	8	0.0004	
13	GB-T-39-1988-C-ZI-M3	方螺母镀锌M3	普通碳钢	16	0.0004	
12	YG-D07-0000-009	D后防护	6063-T5	2	0.050	
11	S-M3-1-ZI	压铆螺母镀锌M3X1	普通碳钢	8	0.3750	
10	YG-TY-JJ-003	D后机脚	6063-T5	2	0.028	
9	YG-D07-0000-011	D中间横梁	6063-T5	1	0.175	
8	YG-D07-0000-003	下盖板	5052-H32	1	0.618	
7	YG-TY-JJ-002	D活动机脚	6063-T5	2	0.017	
6	YG-TY-GZ-001	钢珠 D4.7	普通碳钢	2	0.0004	
5	YG-TY-JJ-001	D前机脚座	6063-T5	2	0.023	
4	YG-TY-TH-001	弹簧 0.6X4X20	普通碳钢	2	0.000	
3	GB-T-80-2007-S-NL-M6X10	不锈钢内六角凹端紧定螺钉M6X10	普通碳钢	2	0.0019	
2	YG-D07-0000-010	D前后横梁	6063-T5	4	0.284	
1	YG-D07-0000-002	上盖板	5052-H32	1	0.618	

技术要求:

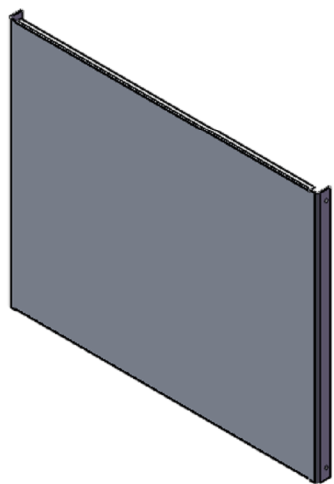
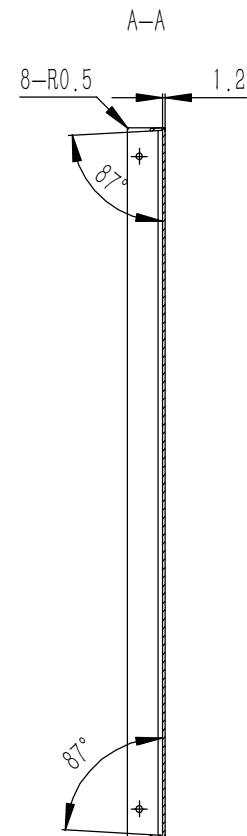
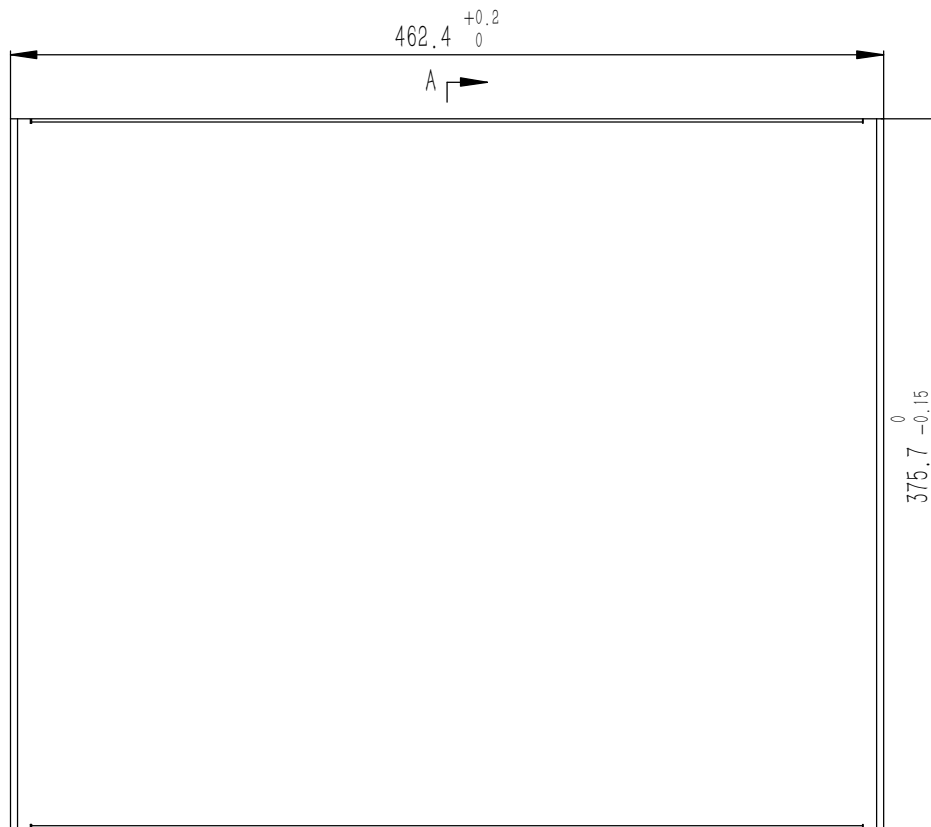
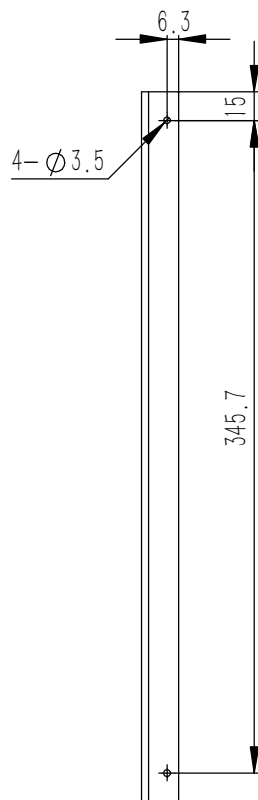
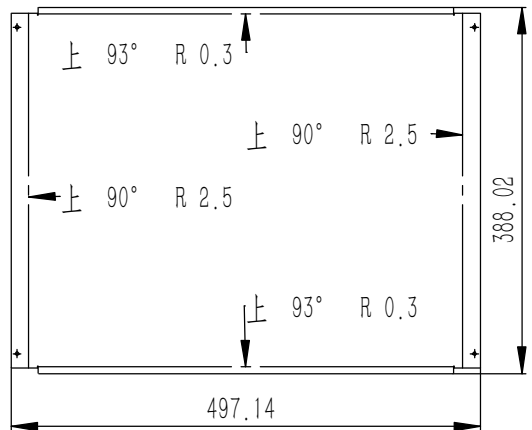
- 1、必须按照设计、工艺要求及本规定和有关标准进行装配;
- 2、所有零部件(包括外购、外协件)必须具有检验合格证方能进行装配;
- 3、零件在装配前必须清理和清洗干净,不得有毛刺、飞边、氧化皮、锈蚀、切屑、砂粒、灰尘和油污等,并应符合相应清洁度要求;
- 4、装配过程中零件不得磕碰、划伤和锈蚀;
- 5、油漆未干的零件不得进行装配;
- 6、相对运动的零件,装配时接触面间应加润滑油脂;
- 7、各零、部件装配后相对位置应准确。

Break sharp edges (未注锐边倒角): Ch 0.05 to 0.25 x45°	Angular tolerances (未注角度公差): <6° ± 10' <30° ± 20' <120° ± 30' >120° ± 1°
Position tolerances (未注位置公差): ± 0.05	

Tolerances (未注公差): 0.5 to 6 ± 0.1 6 to 30 ± 0.2 30 to 120 ± 0.3 120 to 400 ± 0.4		Material (材料): (装配图)		
		Weight: (重量) (Kg): 6.367		
		Protection: (表面处理):		
		Part Name (零/部件名称): D07机箱		Drawing Number (图号): YG-D07-0000-000
		Drawn by (绘图): 莫永康	Date (日期): 2020.05.23	Size (图幅): A0
		Check by (校对):	Date (日期):	Scale (比例): 1:1.5
		Signature by (批准):	Date (日期):	Sheet (页数): 1 / 1



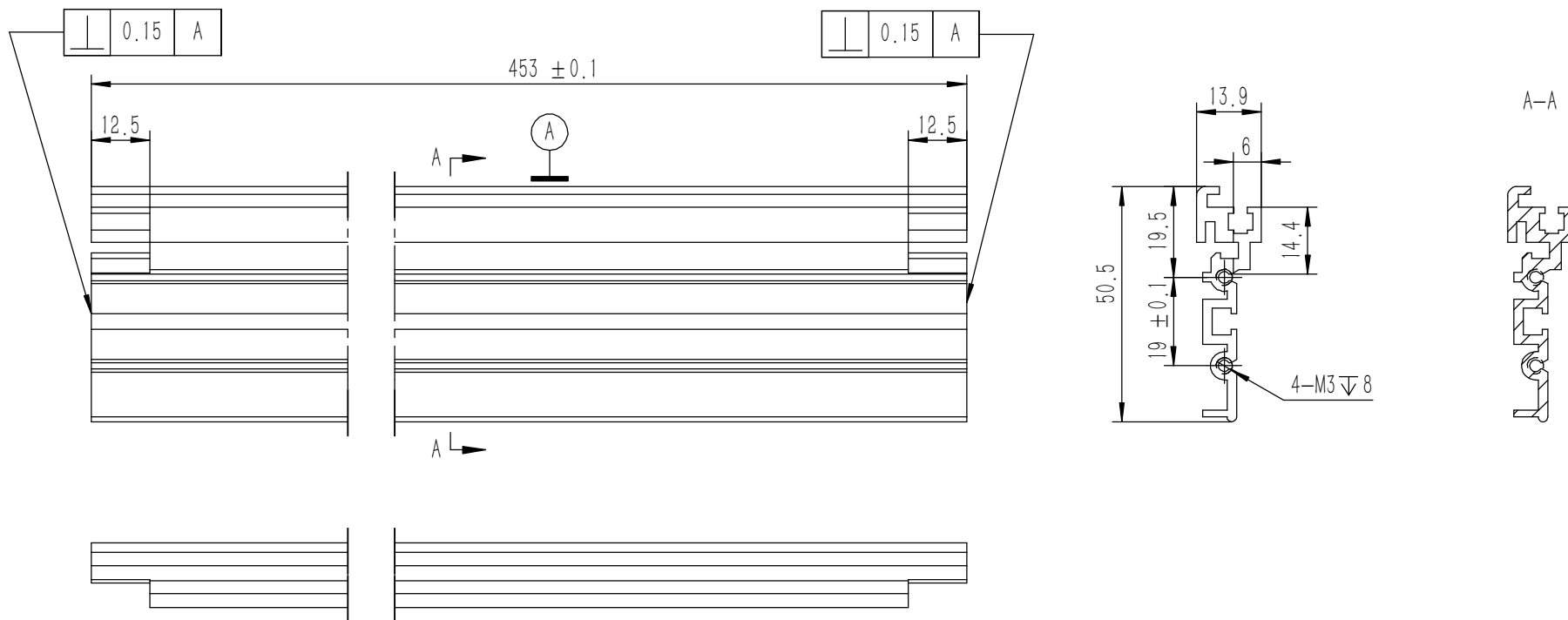
钣金展开及折弯方向参考图 (比例1:2)



- 技术要求:
- 1、零件加工表面不应有划痕、擦伤等损伤零件表面的缺陷;
 - 2、去除毛刺飞边,锐角倒钝;
 - 3、未标注尺寸见3D数模。

Break sharp edges (未注锐边倒角): Ch 0.05 to 0.25 x45°	Angular tolerances (未注角度公差): <6° ± 10' <30° ± 20' <120° ± 30' >120° ± 1°
Position tolerances (未注位置公差): ±0.05	

Tolerances (未注公差): 0.5 to 6 ± 0.1 6 to 30 ± 0.2 30 to 120 ± 0.3 120 to 400 ± 0.4	Material (材料): 5052-H32	YONGU 永固
Weight: (重量) (Kg): 0.618	Weight: (重量) (Kg): 0.618	
Protection: (表面处理):	Protection: (表面处理):	
Part Name (零/部件名称):	Part Name (零/部件名称): 上盖板	Drawing Number (图号): YG-D07-0000-002
Drawn by (绘图): 莫永康	Date (日期): 2020.05.22	Size (图幅): A0
Check by (校对):	Date (日期):	Scale (比例): 1:1
Signature by (批准):	Date (日期):	Revision (版本): A1
		Sheet (页数): 1 / 1

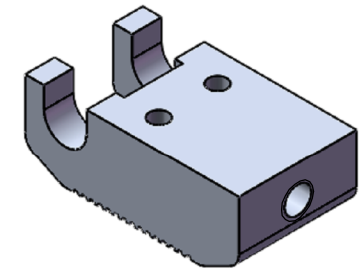
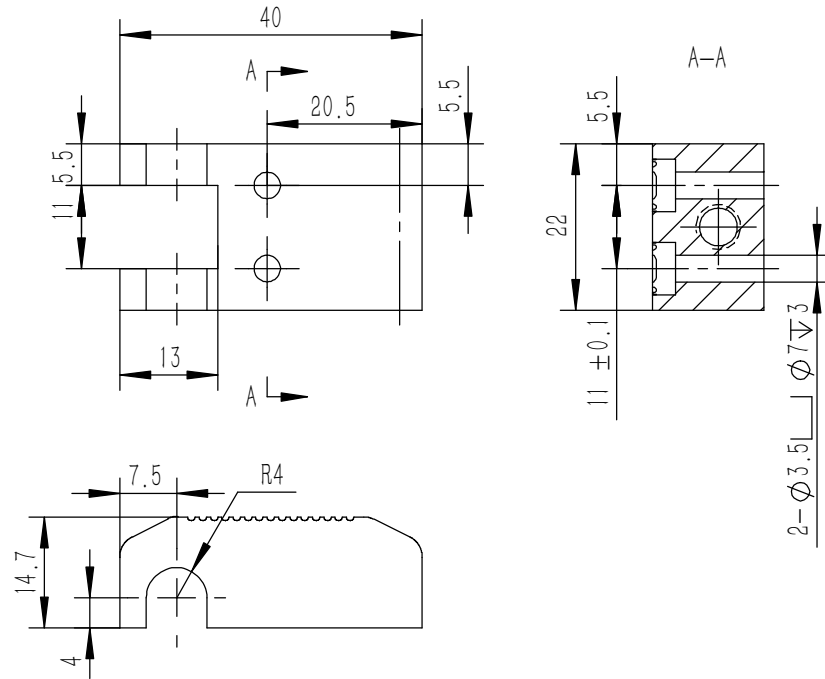
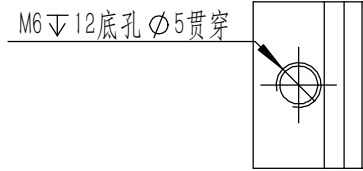


技术要求:

- 1、零件加工表面不应有划痕、擦伤等损伤零件表面的缺陷;
- 2、去除毛刺飞边,锐角倒钝;
- 3、未标注尺寸见3D数模。

Break sharp edges (未注锐边倒角): Ch 0.05 to 0.25 x45°	Angular tolerances (未注角度公差): <6° ± 10' <30° ± 20' <120° ± 30' >120° ± 1°
Position tolerances (未注位置公差): ±0.05	

Tolerances (未注公差): 0.5 to 6 ± 0.1 6 to 30 ± 0.2 30 to 120 ± 0.3 120 to 400 ± 0.4	Material (材料): 6063-T5	YONGU 永固
	Weight: (重量) (Kg) 0.284	
Protection: (表面处理):	Part Name (零/部件名称): D前后横梁	Drawing Number (图号): YG-D07-0000-010
Signature by (批准):	Date (日期):	Size (图幅): A3
Signature by (绘图): 邓展锋	Date (日期): 2020.05.22	Scale (比例): 1:1
Signature by (校对):	Date (日期):	Revision (版本):
Signature by (批准):	Date (日期):	Sheet (页数): 1 / 1



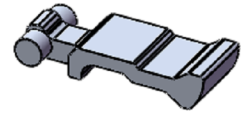
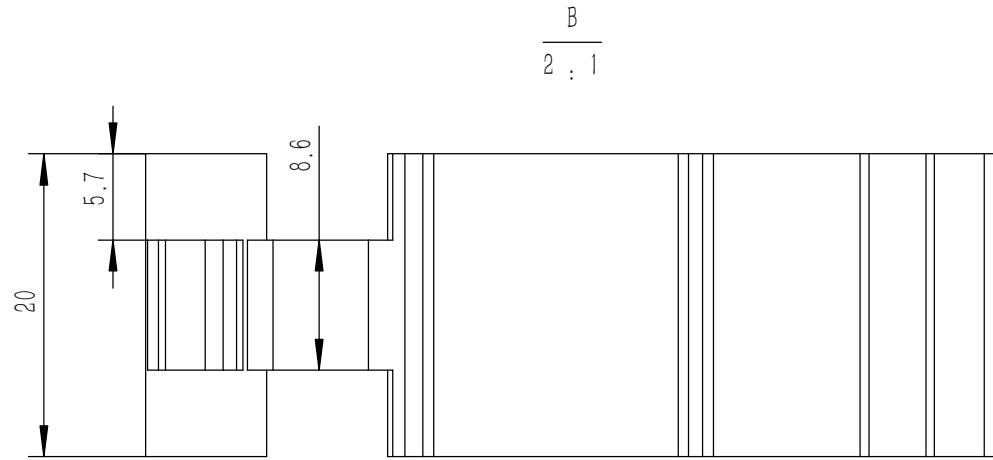
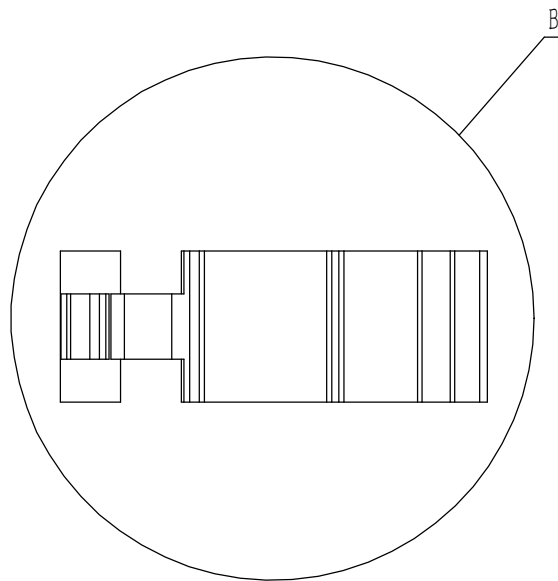
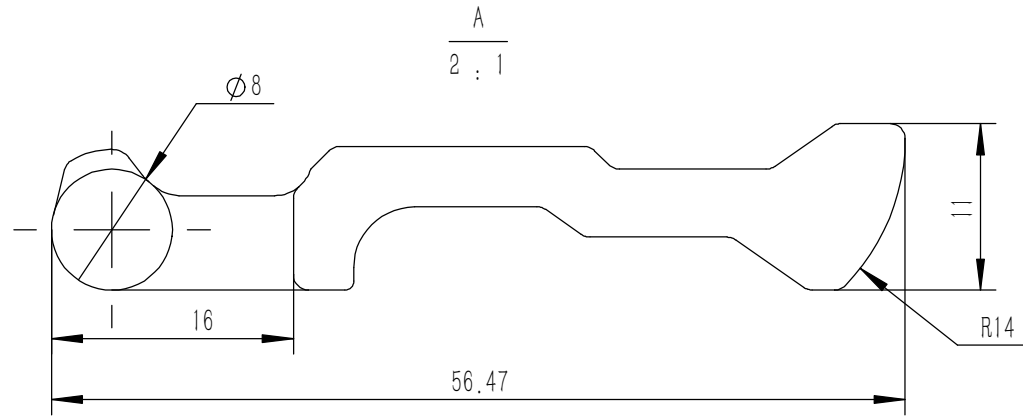
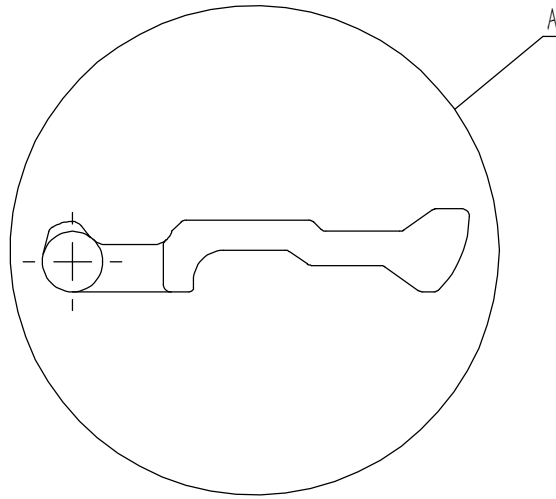
技术要求:

- 1、零件加工表面不应有划痕、擦伤等损伤零件表面的缺陷;
- 2、去除毛刺飞边, 锐角倒钝;
- 3、未标注尺寸见3D数模。

件/套(pcs/set)

Break sharp edges (未注锐边倒角): Ch 0.05 to 0.25 x45°	Angular tolerances (未注角度公差): <6° ± 10' <30° ± 20' <120° ± 30' >120° ± 1°
Position tolerances (未注位置公差): ±0.05	

Tolerances (未注公差): 0.5 to 6 ± 0.1 6 to 30 ± 0.2 30 to 120 ± 0.3 120 to 400 ± 0.4	Material (材料): 6063-T5	<h1>YONGU</h1>
	Weight: (重量) (Kg) 0.023	
	Protection: (表面处理):	Part Name (零/部件名称): D前机脚座
		Drawing Number (图号): YG-TY-JJ-001
	Drawn by (绘图): 邓展锋	Date (日期): 2020.05.22
	Check by (校对):	Date (日期):
	Signature by (批准):	Date (日期):
		Size: (图幅): A4
		Scale (比例): 1:1
		Revision (版本): 1 / 1



件/套(pcs/set)

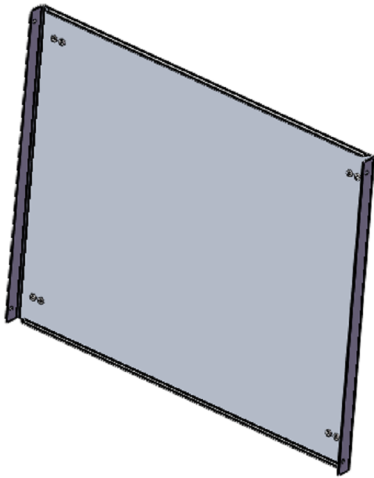
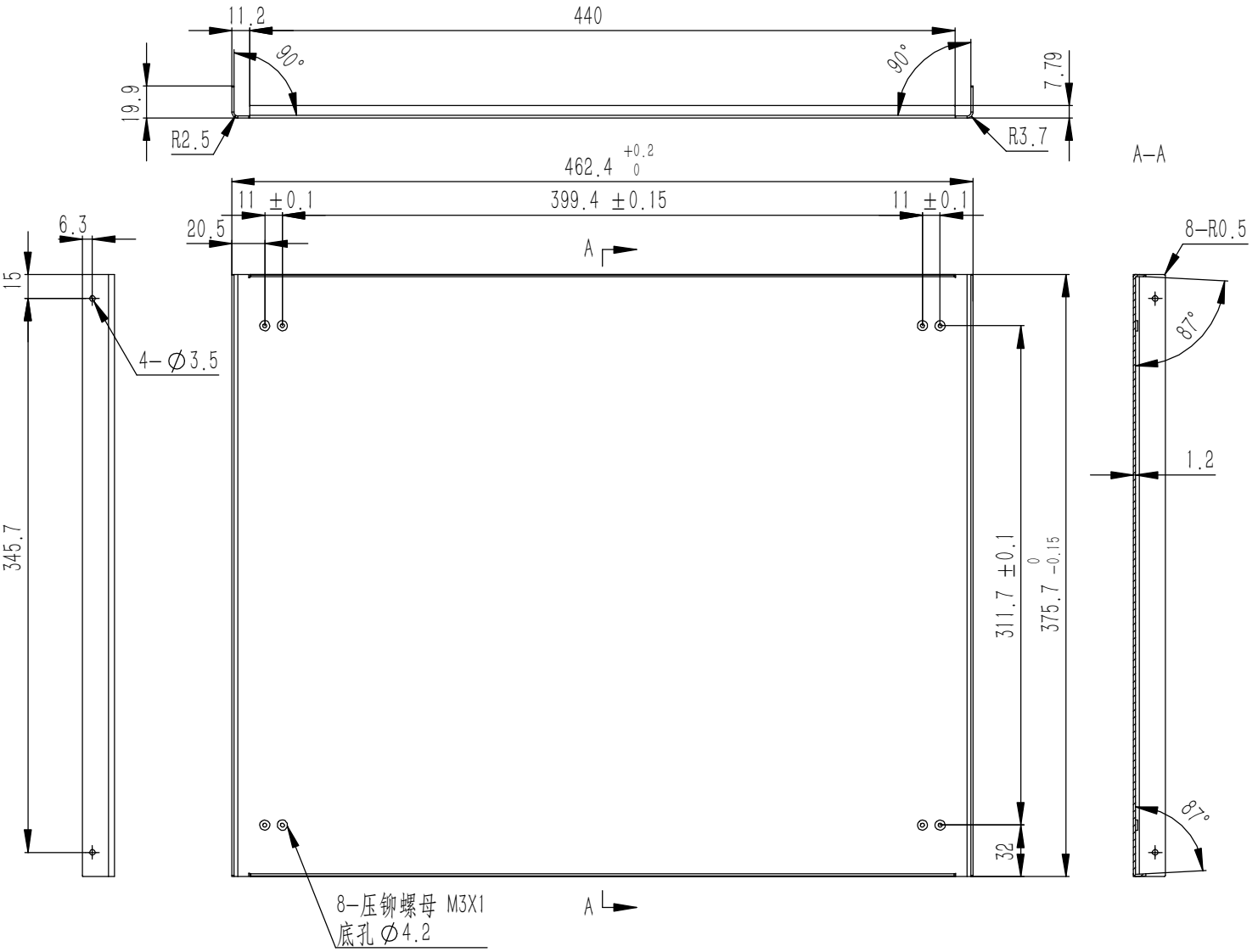
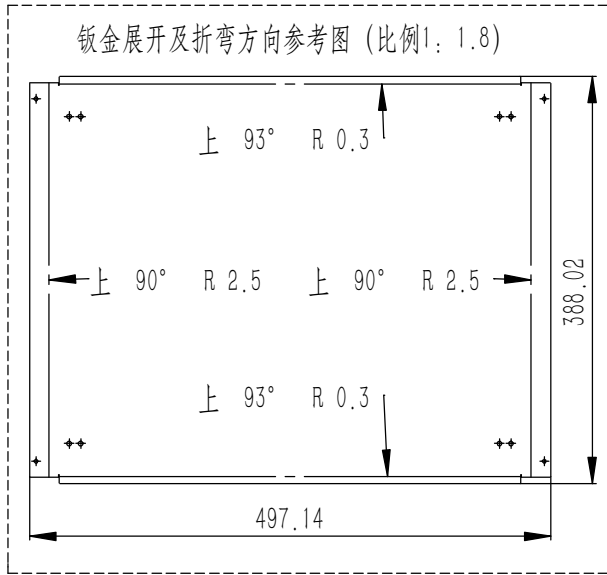
Break sharp edges (未注锐边倒角): Ch 0.05 to 0.25 x45°	Angular tolerances (未注角度公差): <6° ± 10' <30° ± 20' <120° ± 30' >120° ± 1°
Position tolerances (未注位置公差): ±0.05	

Tolerances (未注公差):	
0.5 to 6	± 0.1
6 to 30	± 0.2
30 to 120	± 0.3
120 to 400	± 0.4

Material (材料):	6063-T5
Weight: (重量) (Kg)	0.017
Protection: (表面处理):	
Part Name (零/部件名称):	D活动机脚

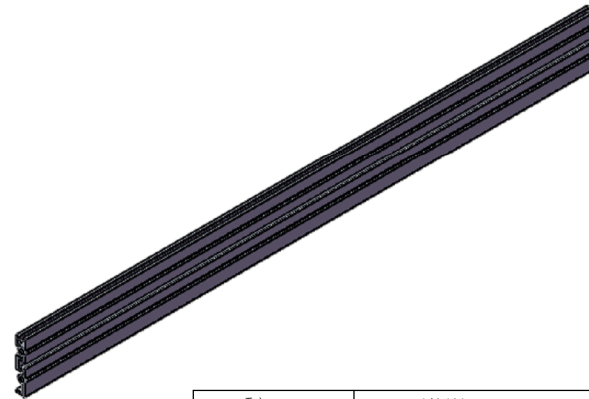
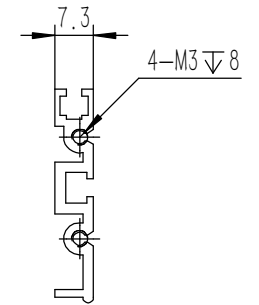
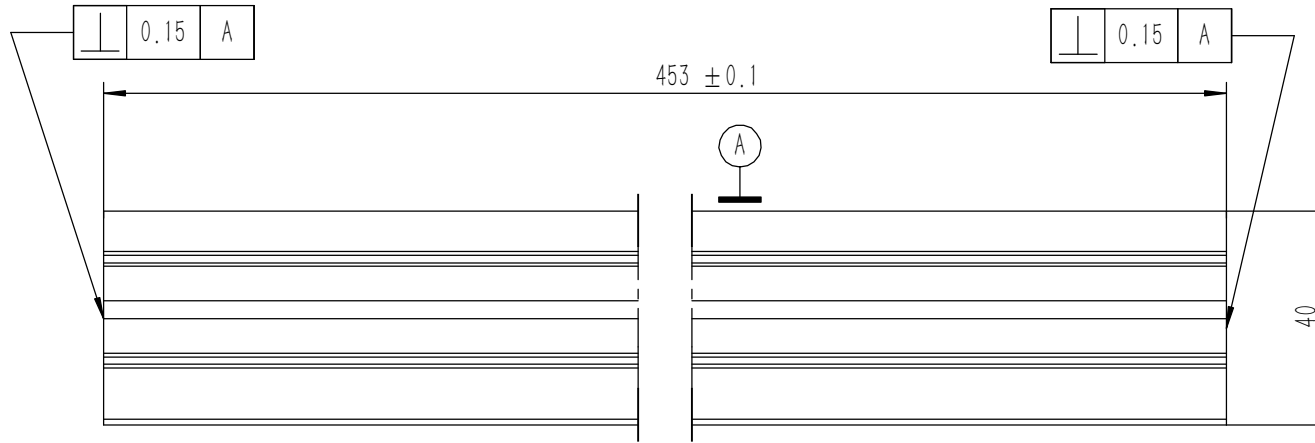
YONGU 

Drawing Number (图号):		YG-TY-JJ-002	
Drawn by (绘图):	邓展锋	Date (日期):	2020.05.22
Check by (校对):		Date (日期):	
Signature by (批准):		Date (日期):	
Size: (图幅):	A4	Scale (比例):	1:1
		Revision (版本):	1 / 1



技术要求:
 1、零件加工表面不应有划痕、擦伤等损伤零件表面的缺陷;
 2、去除毛刺飞边,锐角倒钝;
 3、未标注尺寸见3D数模。

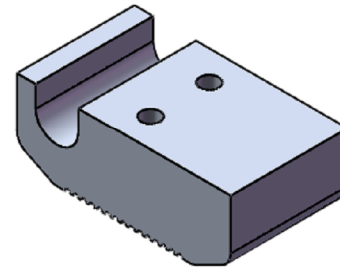
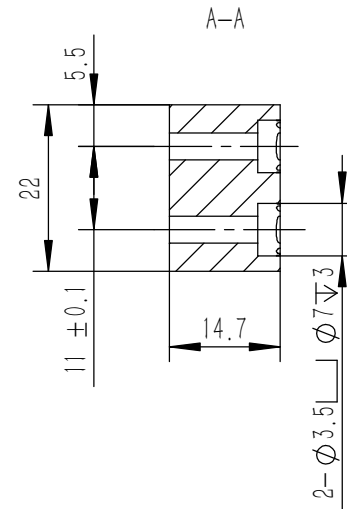
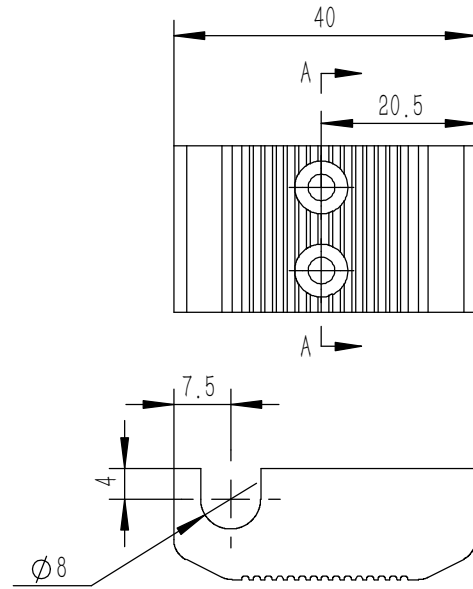
Tolerances (未注公差): 0.5 to 6 ± 0.1 6 to 30 ± 0.2 30 to 120 ± 0.3 120 to 400 ± 0.4	Material (材料):	5052-H32		YONGU 永固	
	Weight: (重量) (Kg):	0.621			
	Protection: (表面处理):				
	Part Name (零/部件名称):	下盖板		Drawing Number (图号): YG-D07-0000-003	
Break sharp edges (未注锐边倒角): Ch 0.05 to 0.25 x45°	Angular tolerances (未注角度公差): <6° ± 10' <30° ± 20' <120° ± 30' >120° ± 1°	Drawn by (绘图): 莫永康 Date (日期): 2020.05.22	Date (日期): Date (日期):	Size (图幅): A0 Scale (比例): 1:1 Revision (版本): A1	Sheet (页数): 1 / 1
Position tolerances (未注位置公差): ± 0.05	Signature by (批准): Date (日期):	Date (日期):	Date (日期):	Sheet (页数): 1 / 1	



技术要求:

- 1、零件加工表面不应有划痕、擦伤等损伤零件表面的缺陷;
- 2、去除毛刺飞边, 锐角倒钝;
- 3、未标注尺寸见3D数模。

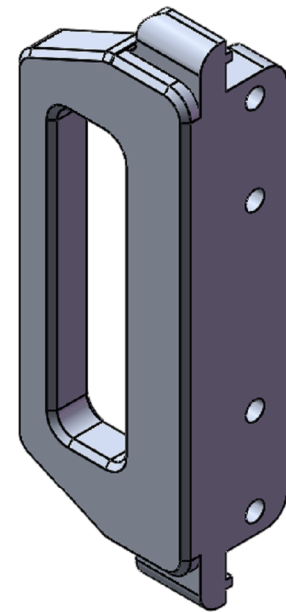
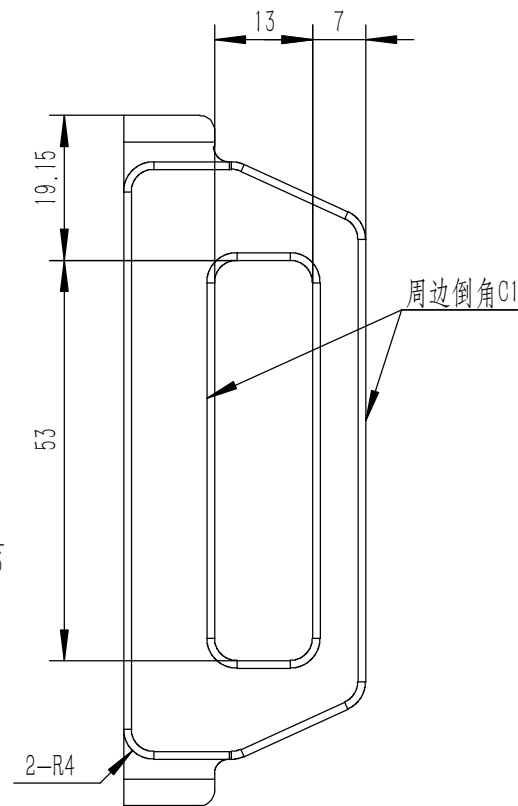
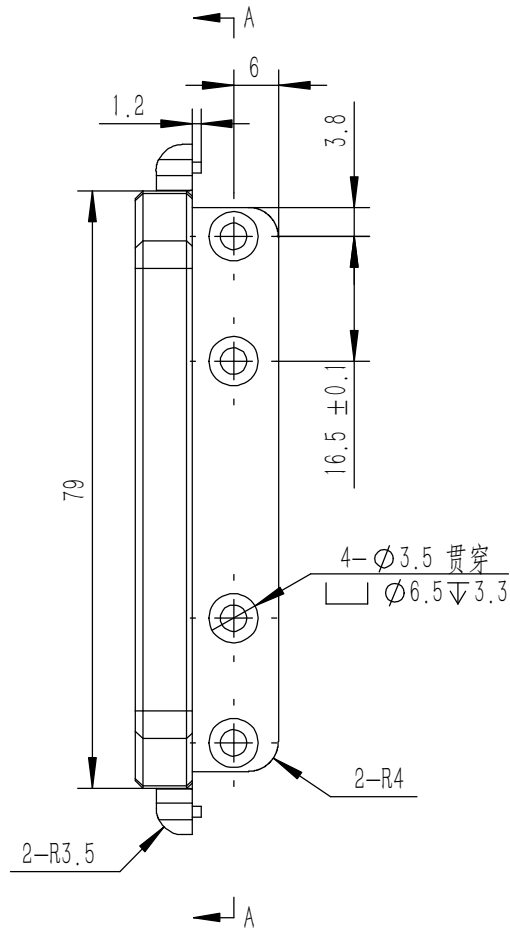
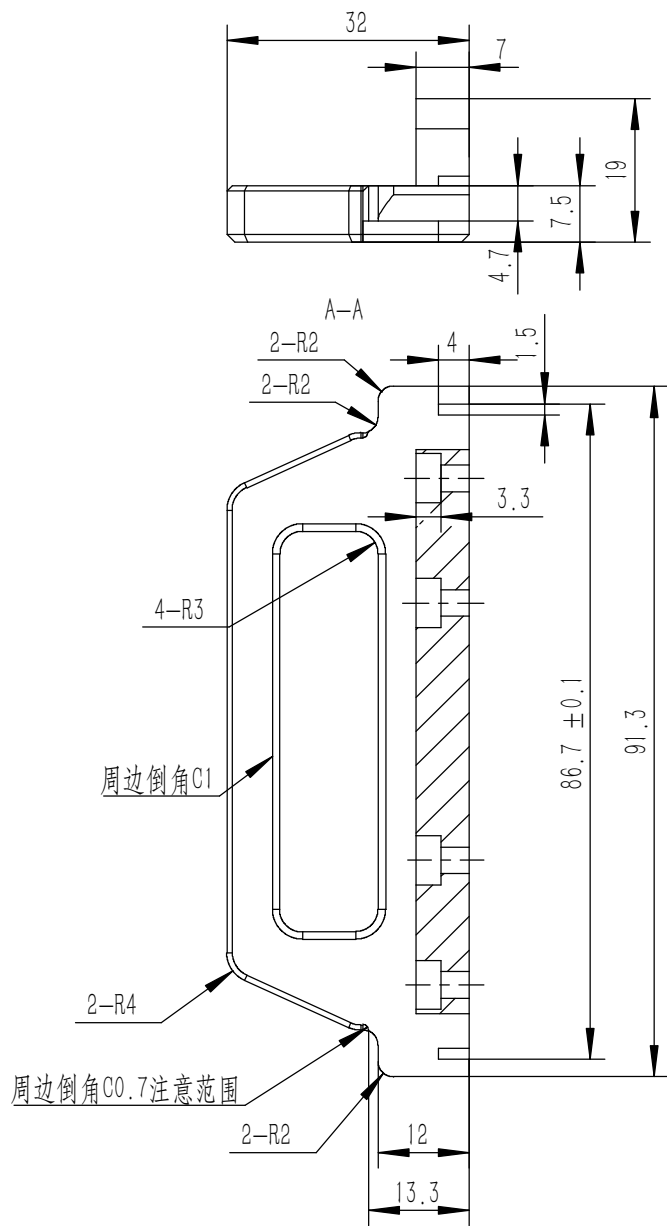
Tolerances (未注公差): 0.5 to 6 ± 0.1 6 to 30 ± 0.2 30 to 120 ± 0.3 120 to 400 ± 0.4	Material (材料):	6063-T5		YONGU 永固				
	Weight: (重量) (Kg)	0.175						
Break sharp edges (未注锐边倒角): Ch 0.05 to 0.25 x45°	Protection: (表面处理):			Drawing Number (图号): YG-D07-0000-011				
	Part Name (零/部件名称):	D中间横梁						
Angular tolerances (未注角度公差): <6° ± 10' <30° ± 20' <120° ± 30' >120° ± 1°	Position tolerances (未注位置公差): ±0.05	Drawn by (绘图):	邓展锋	Date (日期):	2020.05.22	Size. (图幅):	A3	Sheet (页数): 1 / 1
		Check by (校对):		Date (日期):		Scale (比例):	1:1	
		Signature by (批准):		Date (日期):		Revision (版本):		



技术要求:

- 1、零件加工表面不应有划痕、擦伤等损伤零件表面的缺陷;
- 2、去除毛刺飞边, 锐角倒钝;
- 3、未标注尺寸见3D数模。

Tolerances (未注公差): 0.5 to 6 ± 0.1 6 to 30 ± 0.2 30 to 120 ± 0.3 120 to 400 ± 0.4	Material (材料): 6063-T5	YONGU 永固	
	Weight: (重量) (Kg) 0.028		
Break sharp edges (未注锐边倒角): Ch 0.05 to 0.25 x45°	Protection: (表面处理):	Part Name (零/部件名称):	
	Position tolerances (未注位置公差): ±0.05	D后机脚	
Angular tolerances (未注角度公差): <6° ± 10' <30° ± 20' <120° ± 30' >120° ± 1°	Part Name (零/部件名称):	Drawing Number (图号):	
	Drawn by (绘图): 邓展锋	Date (日期): 2020.05.22	YG-TY-JJ-003
	Check by (校对):	Date (日期):	Size: (图幅): A4
	Signature by (批准):	Date (日期):	Scale (比例): 1:1
		Revision (版本):	Sheet (页数):
			1 / 1



技术要求:

- 1、零件加工表面不应有划痕、擦伤等损伤零件表面的缺陷;
- 2、去除毛刺飞边, 锐角倒钝;
- 3、未标注尺寸见3D数模。

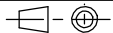
Tolerances (未注公差):	
0.5 to 6	± 0.1
6 to 30	± 0.2
30 to 120	± 0.3
120 to 400	± 0.4

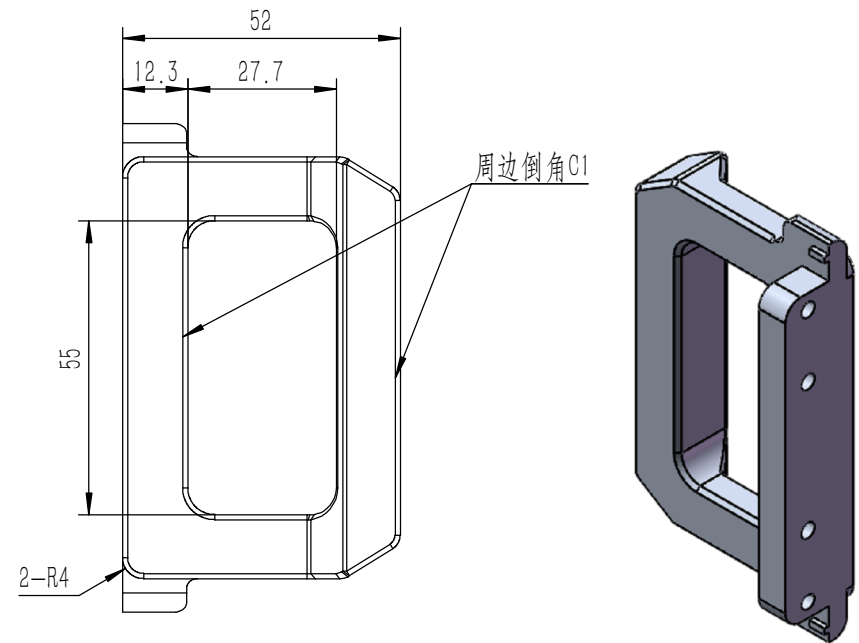
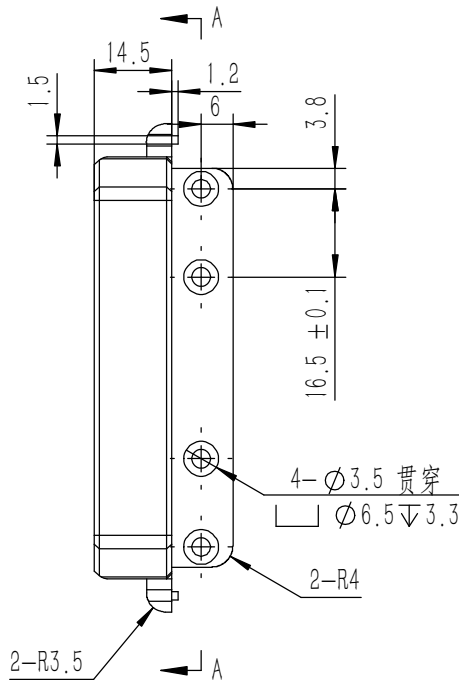
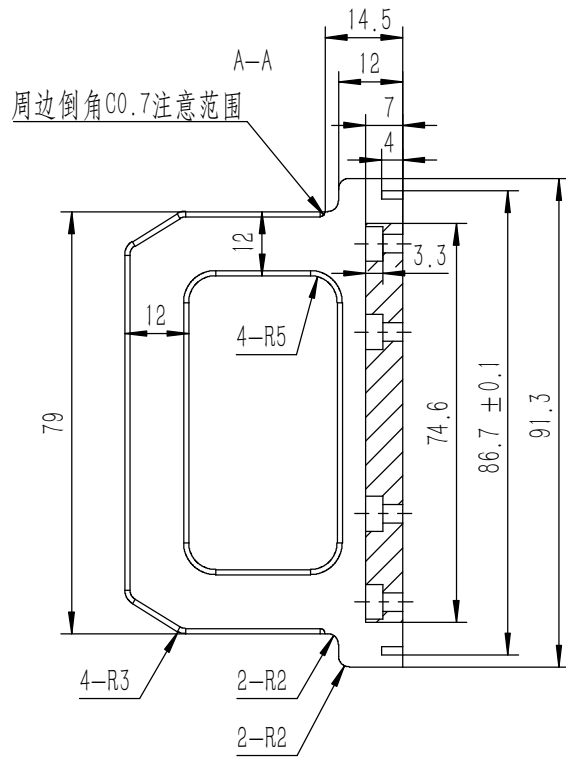
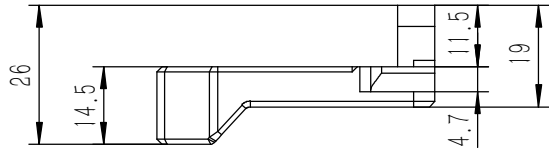
Break sharp edges (未注锐边倒角): Ch 0.05 to 0.25 x45°		Angular tolerances (未注角度公差):	
Position tolerances (未注位置公差): ± 0.05		<6°	± 10'
		<30°	± 20'
		<120°	± 30'
		>120°	± 1°

Material (材料):	6063-T5
Weight: (重量) (Kg)	0.050
Protection: (表面处理):	
Part Name (零/部件名称):	D后防护

<h1>YONGU</h1> 	

Drawn by (绘图): 邓展锋	Date (日期): 2020.05.14
Check by (校对):	Date (日期):
Signature by (批准):	Date (日期):

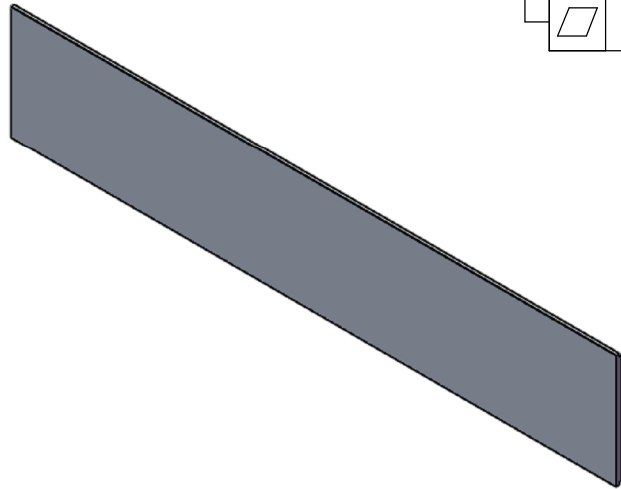
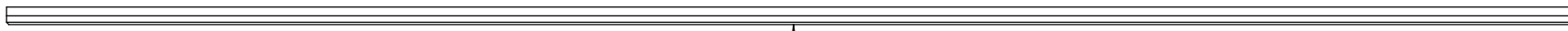
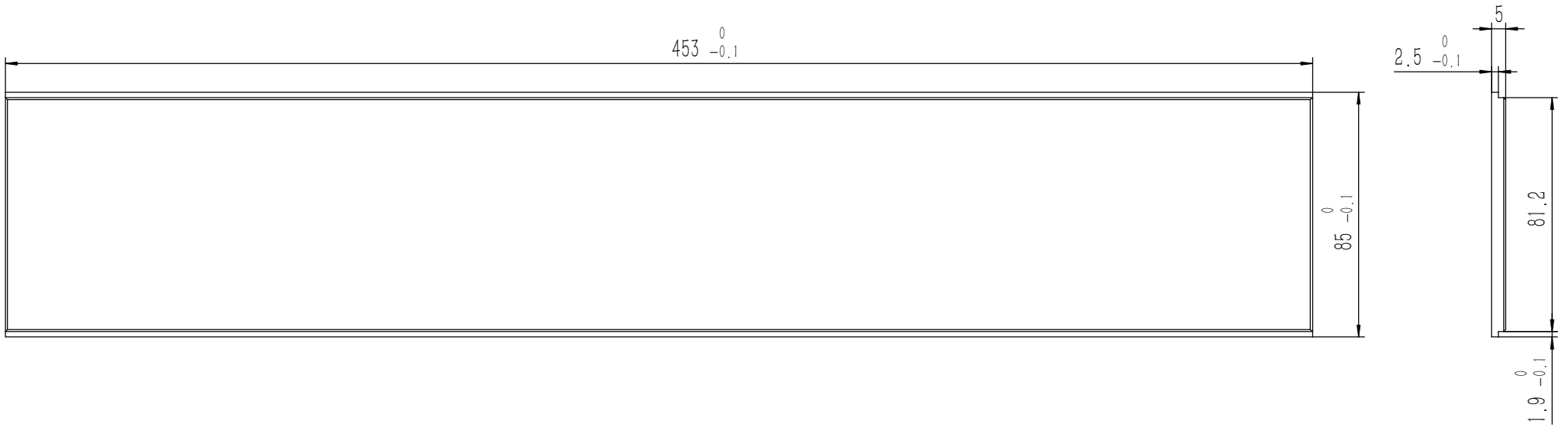
Size: (图幅): A4	
Scale (比例): 1:1	
Revision (版本): A1	Sheet (页数): 1 / 1



技术要求:

- 1、零件加工表面不应有划痕、擦伤等损伤零件表面的缺陷;
- 2、去除毛刺飞边,锐角倒钝;
- 3、未标注尺寸见3D数模。


Tolerances (未注公差): 0.5 to 6 ± 0.1 6 to 30 ± 0.2 30 to 120 ± 0.3 120 to 400 ± 0.4	Material (材料):	6063-T5		YONGU 永固				
	Weight: (重量) (Kg)	0.084						
Break sharp edges (未注锐边倒角): Ch 0.05 to 0.25 x45°	Protection: (表面处理):			Drawing Number (图号): YG-D07-0000-008				
	Part Name (零/部件名称):	D拉手						
Position tolerances (未注位置公差): ±0.05	Angular tolerances (未注角度公差): <6° ± 10' <30° ± 20' <120° ± 30' >120° ± 1°	Drawn by (绘图):	邓展锋	Date (日期):	2020.05.22	Size (图幅):	A3	Sheet (页数): 1 / 1
		Check by (校对):		Date (日期):		Scale (比例):	1:1	
		Signature by (批准):		Date (日期):		Revision (版本):		

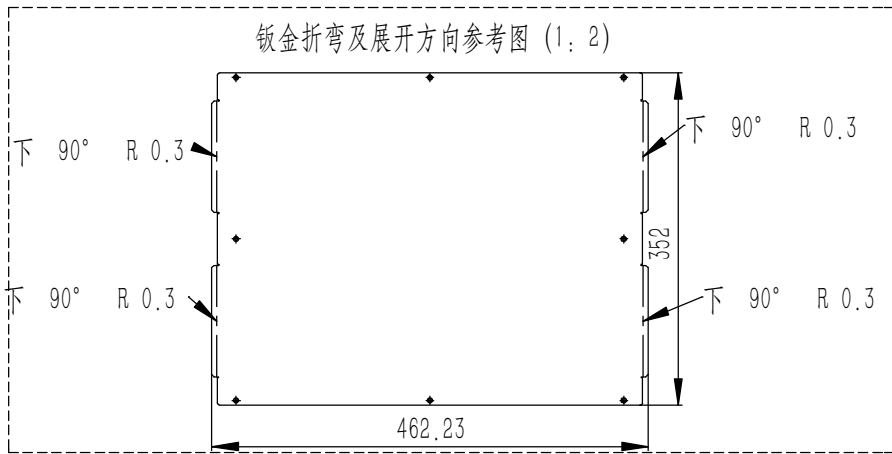
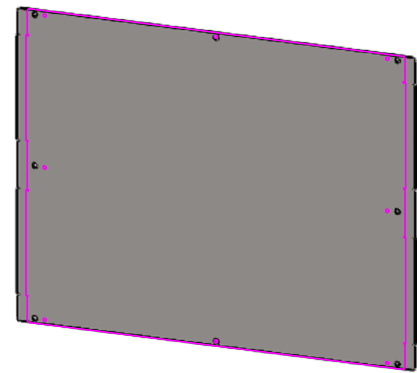
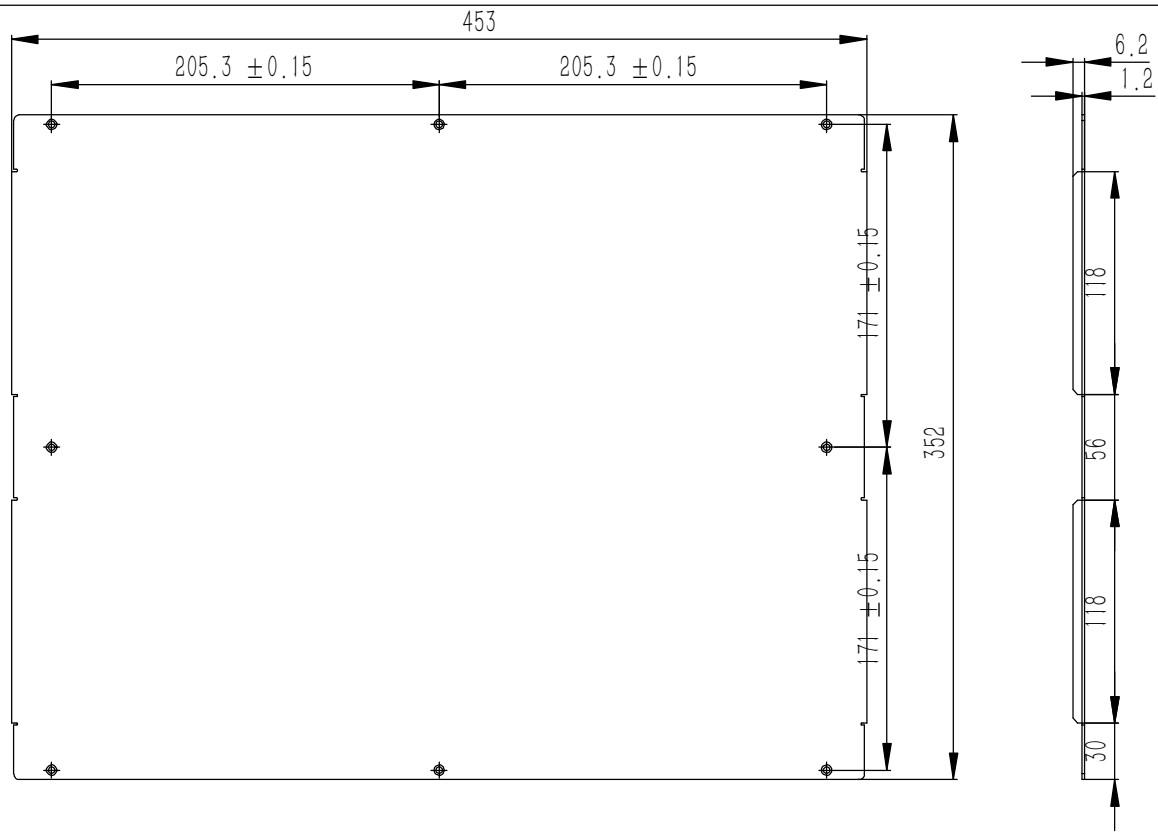


技术要求:

- 1、零件加工表面不应有划痕、擦伤等损伤零件表面的缺陷;
- 2、去除毛刺飞边, 锐角倒钝;
- 3、未标注尺寸见3D数模。

Break sharp edges (未注锐边倒角): Ch 0.05 to 0.25 x45°	Angular tolerances (未注角度公差): <6° ± 10' <30° ± 20' <120° ± 30' >120° ± 1°
Position tolerances (未注位置公差): ±0.05	

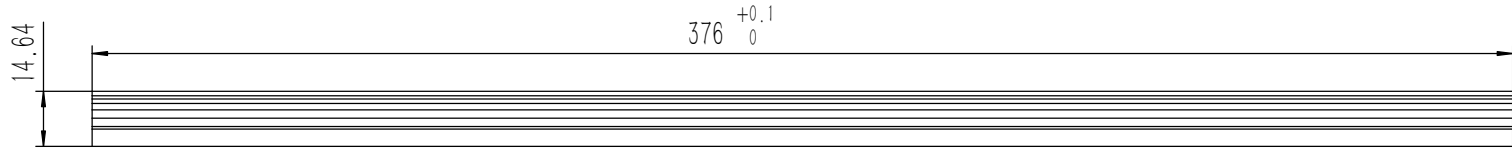
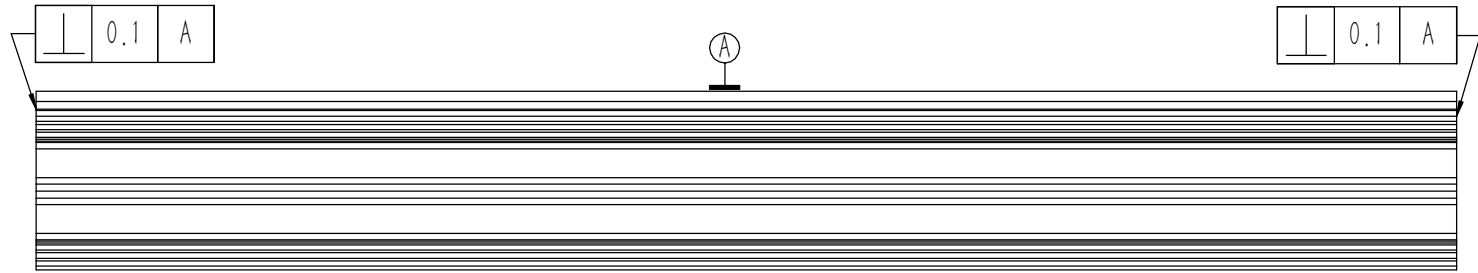
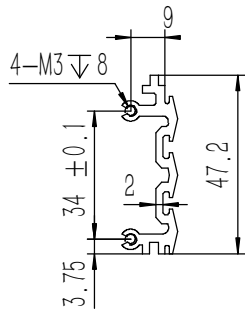
Tolerances (未注公差): 0.5 to 6 ± 0.1 6 to 30 ± 0.2 30 to 120 ± 0.3 120 to 400 ± 0.4	Material (材料): 5052-H32	
	Weight: (重量) (Kg): 0.504	
Protection: (表面处理):	Part Name (零/部件名称): 前后面板	Drawing Number (图号): YG-D07-0000-001
Drawn by (绘图): 莫永康	Date (日期): 2020.05.22	Size (图幅): A2
Check by (校对):	Date (日期):	Scale (比例): 1:1
Signature by (批准):	Date (日期):	Revision (版本): A1
		Sheet (页数): 1 / 1



- 技术要求:
- 1、零件加工表面不应有划痕、擦伤等损伤零件表面的缺陷;
 - 2、去除毛刺飞边, 锐角倒钝;
 - 3、未标注尺寸见3D数模。

Break sharp edges (未注锐边倒角): Ch 0.05 to 0.25 x45°	Angular tolerances (未注角度公差): <6° ± 10' <30° ± 20' <120° ± 30' >120° ± 1°
Position tolerances (未注位置公差): ±0.05	

Tolerances (未注公差): 0.5 to 6 ± 0.1 6 to 30 ± 0.2 30 to 120 ± 0.3 120 to 400 ± 0.4	Material (材料):	电解板				
	Weight: (重量) (Kg):	1.509				
	Protection: (表面处理):					
	Part Name (零/部件名称):	D安装垫板		Drawing Number (图号): YG-D07-0000-004		
Drawn by (绘图):	邓展锋	Date (日期):	2020.05.22	Size (图幅):	A0	
Check by (校对):		Date (日期):		Scale (比例):	1:1	
Signature by (批准):		Date (日期):		Revision (版本):		Sheet (页数): 1 / 1

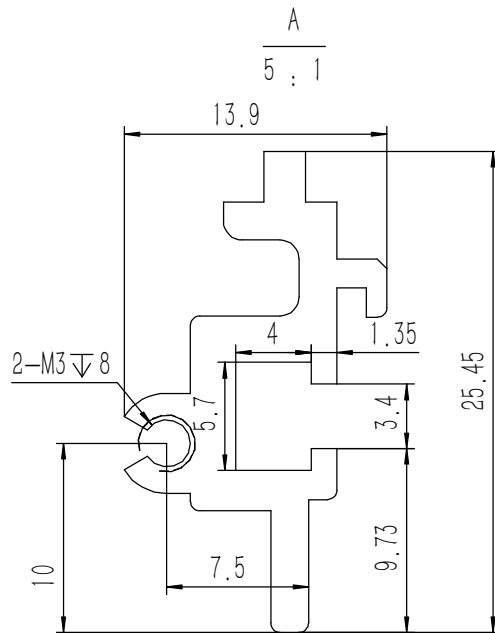
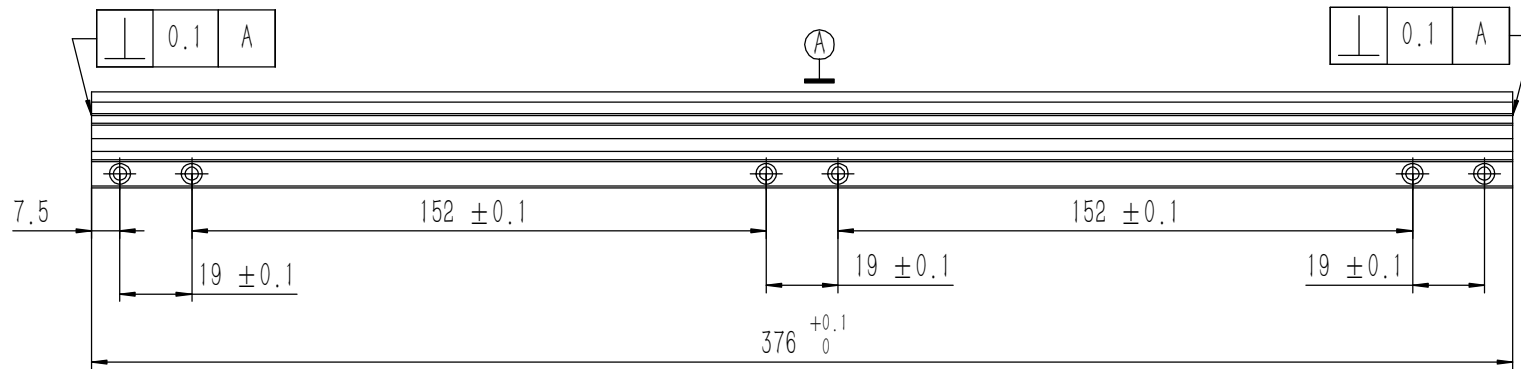


技术要求:

- 1、零件加工表面不应有划痕、擦伤等损伤零件表面的缺陷;
- 2、去除毛刺飞边, 锐角倒钝;
- 3、未标注尺寸见3D数模。

Tolerances (未注公差): 0.5 to 6 ± 0.1 6 to 30 ± 0.2 30 to 120 ± 0.3 120 to 400 ± 0.4	Material (材料):	6063-T5	
	Weight: (重量) (Kg):	0.223	
Break sharp edges (未注锐边倒角): Ch 0.05 to 0.25 x45°	Protection: (表面处理):		
	Position tolerances (未注位置公差): ±0.05	Part Name (零/部件名称):	
Angular tolerances (未注角度公差): <6° ± 10' <30° ± 20' <120° ± 30' >120° ± 1°	组合侧板		Drawing Number (图号):
	Drawn by (绘图): 莫永康	Date (日期): 2020.05.22	YG-D07-0000-006
	Check by (校对):	Date (日期):	Size: (图幅): A2
	Signature by (批准):	Date (日期):	Scale (比例): 1:1
			Revision (版本): A1
			Sheet (页数): 1 / 1

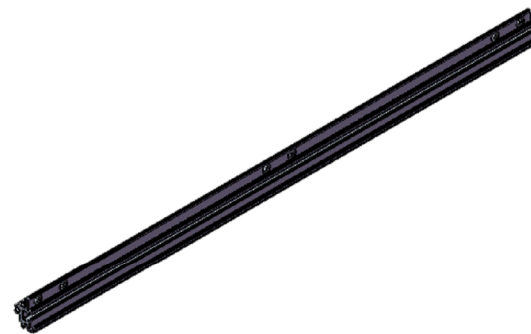
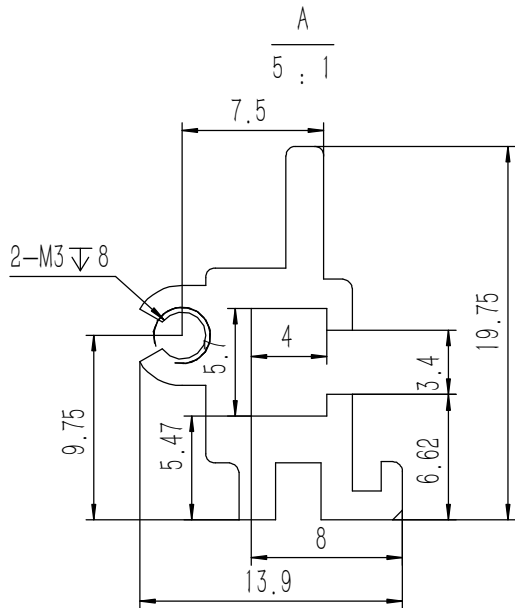
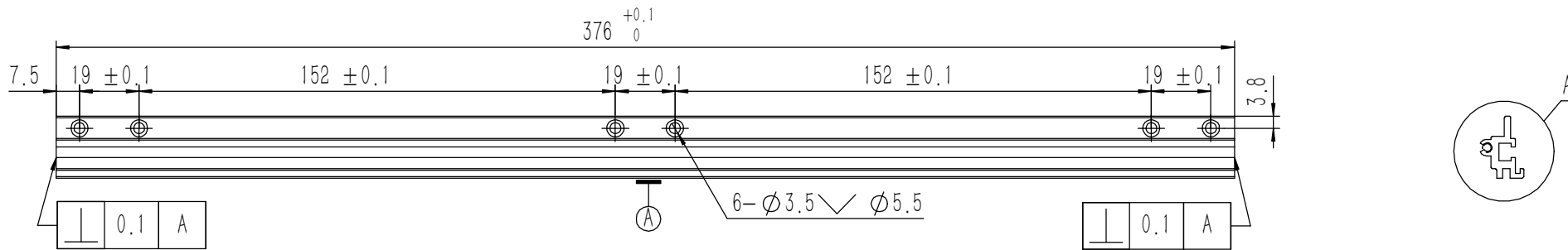
YONGU 永固



技术要求:

- 1、零件加工表面不应有划痕、擦伤等损伤零件表面的缺陷;
- 2、去除毛刺飞边, 锐角倒钝;
- 3、未标注尺寸见3D数模。

Tolerances (未注公差): 0.5 to 6 ± 0.1 6 to 30 ± 0.2 30 to 120 ± 0.3 120 to 400 ± 0.4	Material (材料): 6063-T5	YONGU 永固
	Weight: (重量) (Kg): 0.107	
Break sharp edges (未注锐边倒角): Ch 0.05 to 0.25 x45°	Protection: (表面处理):	Drawing Number (图号): YG-D07-0000-007
Position tolerances (未注位置公差): ±0.05	Part Name (零/部件名称): 组合侧板	
Angular tolerances (未注角度公差): <6° ± 10' <30° ± 20' <120° ± 30' >120° ± 1°	Drawn by (绘图): 莫永康	Size: (图幅): A2
	Check by (校对):	Scale (比例): 1:1
	Signature by (批准):	Revision (版本): A1
	Date (日期): 2020.05.22	Sheet (页数): 1 / 1
	Date (日期):	
	Date (日期):	

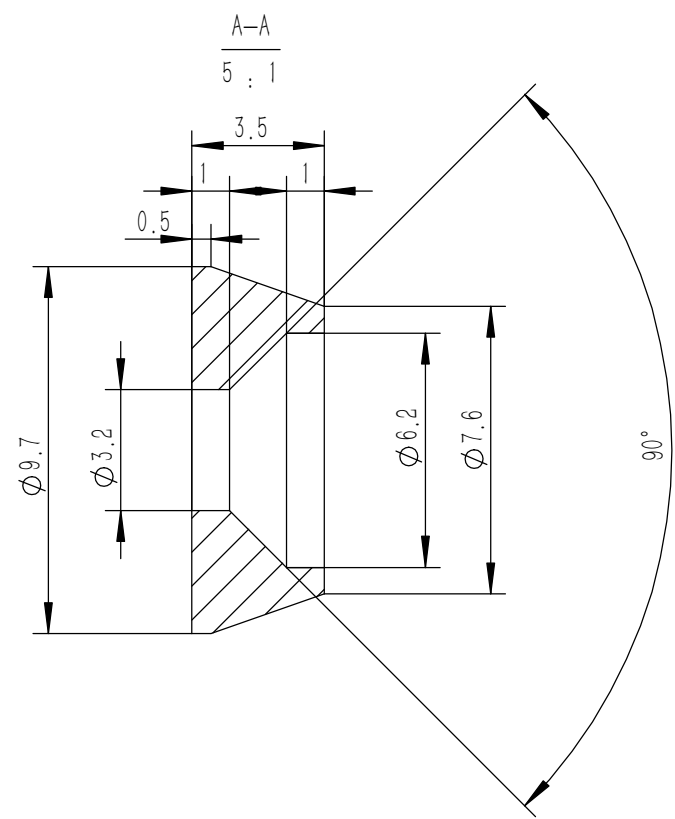
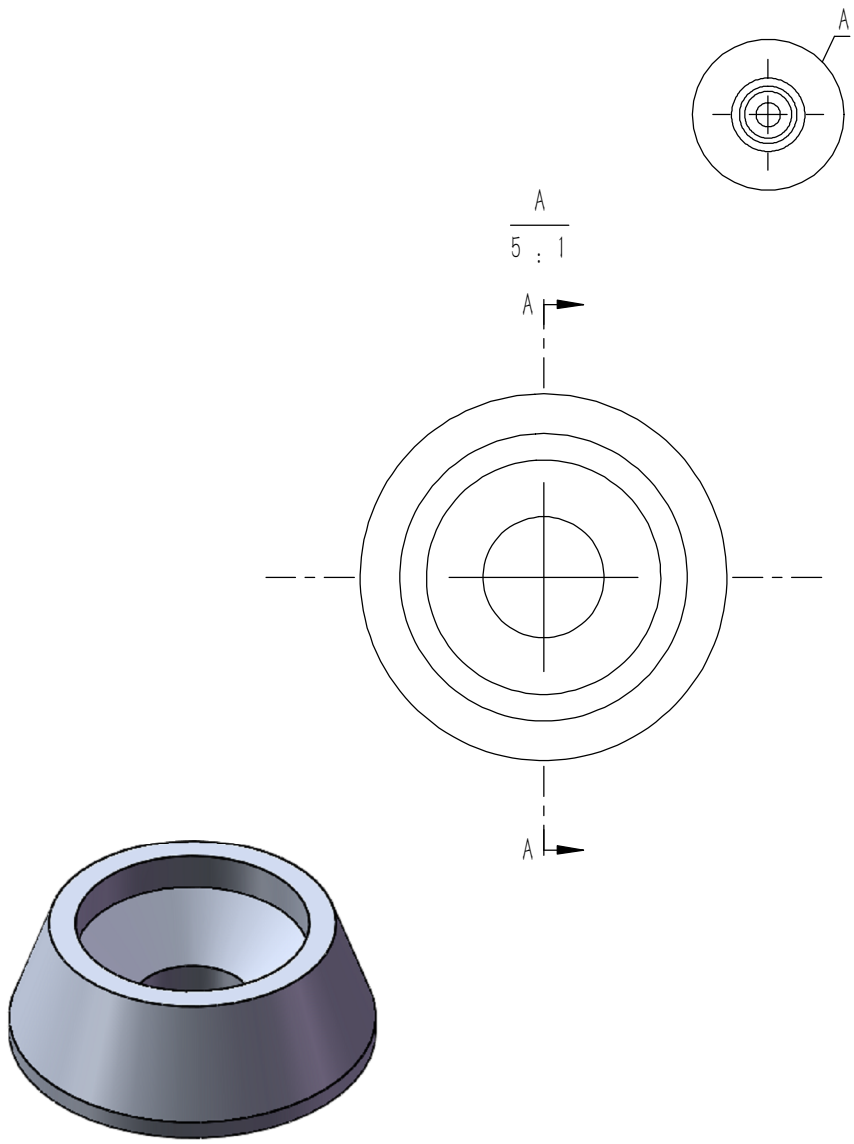


技术要求:

- 1、零件加工表面不应有划痕、擦伤等损伤零件表面的缺陷;
- 2、去除毛刺飞边, 锐角倒钝;
- 3、未标注尺寸见3D数模。

Tolerances (未注公差): 0.5 to 6 ± 0.1 6 to 30 ± 0.2 30 to 120 ± 0.3 120 to 400 ± 0.4	Material (材料):	6063-T5	
	Weight: (重量) (Kg):	0.091	
Break sharp edges (未注锐边倒角): Ch 0.05 to 0.25 x45°	Protection: (表面处理):		
	Position tolerances (未注位置公差): ±0.05	Part Name (零/部件名称):	组合侧板
Angular tolerances (未注角度公差): <6° ± 10' <30° ± 20' <120° ± 30' >120° ± 1°	Signature by (批准):	Date (日期):	2020.05.22
	Check by (校对):	Date (日期):	
Drawing Number (图号):		YG-D07-0000-005	
Size: (图幅):		A2	
Scale (比例):		1:1	
Revision (版本):		A1	
Sheet (页数):		1 / 1	

YONGU 永固



技术要求:
 1、零件加工表面不应有划痕、擦伤等损伤零件表面的缺陷;
 2、去除毛刺飞边,锐角倒钝;
 3、未标注尺寸见3D数模。

Tolerances (未注公差): 0.5 to 6 ± 0.1 6 to 30 ± 0.2 30 to 120 ± 0.3 120 to 400 ± 0.4	Material (材料):	5052-H32		YONGU 永固
	Weight: (重量) (Kg)	0.000		
Break sharp edges (未注锐边倒角): Ch 0.05 to 0.25 x45°	Protection: (表面处理):			Drawing Number (图号): YG-TY-ZSJ-001
	Position tolerances (未注位置公差): ±0.05	Part Name (零/部件名称):	螺丝装饰件 M3	
Angular tolerances (未注角度公差): <6° ± 10' <30° ± 20' <120° ± 30' >120° ± 1°	Drawn by (绘图):	莫永康	Date (日期):	2020.05.22
	Check by (校对):		Date (日期):	
	Signature by (批准):		Date (日期):	
		Scale (比例):	1:1	
		Revision (版本):	A1	
		Sheet (页数):	1 / 1	