

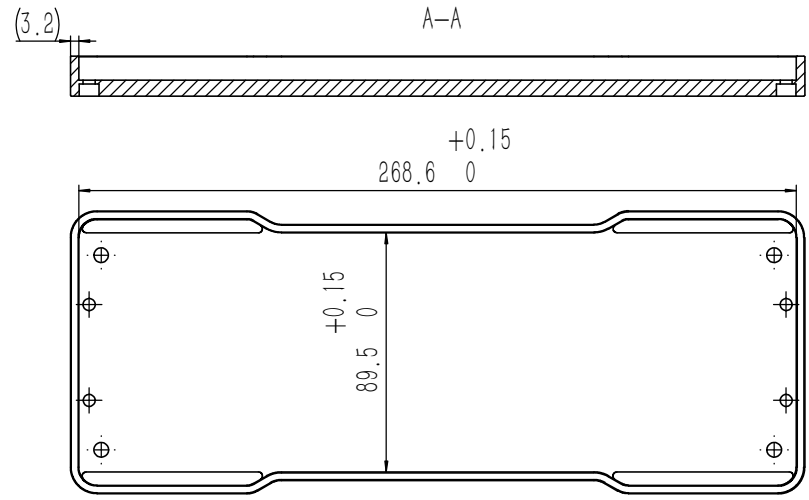
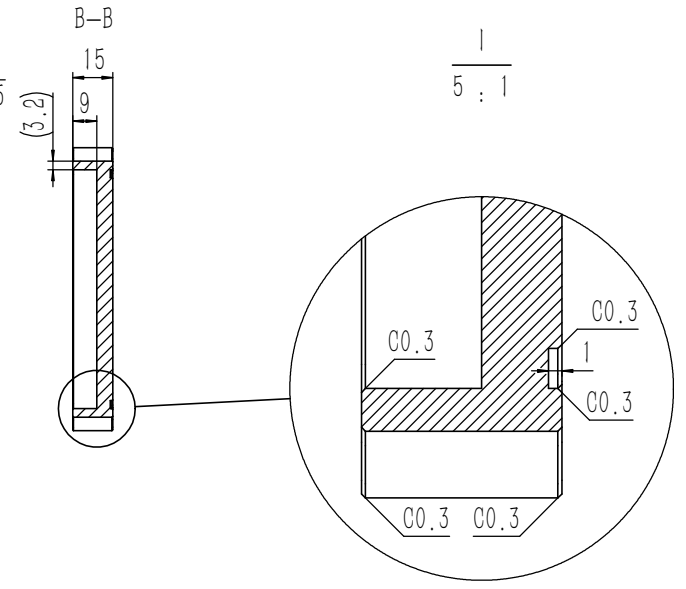
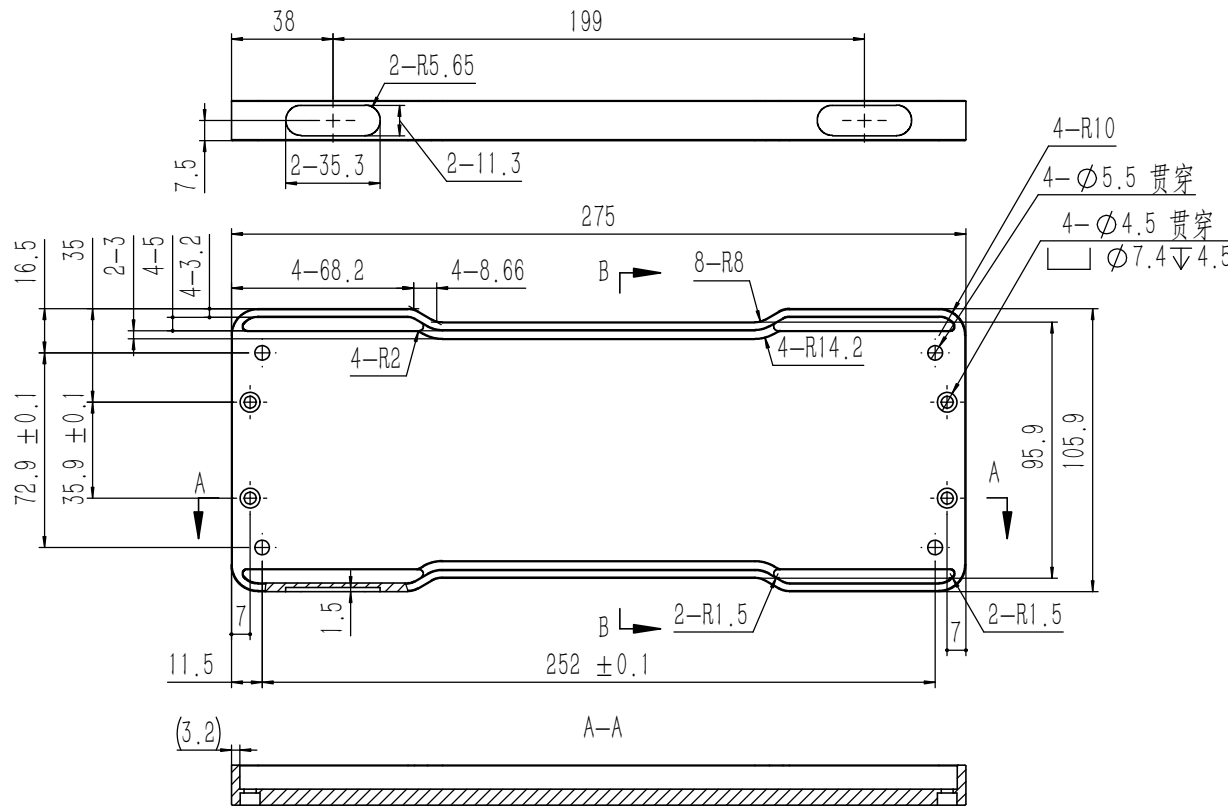
技术要求:

- 1、必须按照设计、工艺要求及本规定和有关标准进行装配;
- 2、所有零部件(包括外购、外协件)必须具有检验合格证方能进行装配;
- 3、零件在装配前必须清理和清洗干净,不得有毛刺、飞边、氧化皮、锈蚀、切屑、砂粒、灰尘和油污等,并应符合相应清洁度要求;
- 4、装配过程中零件不得磕碰、划伤和锈蚀;
- 5、油漆未干的零件不得进行装配;
- 6、相对运动的零件,装配时接触面间应加润滑油脂;
- 7、各零、部件装配后相对位置应准确。

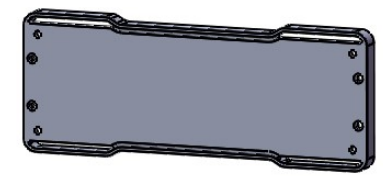
13	DIN-9250-S-NL-M4	不锈钢防松垫圈M4	SUS 304	4	0.000	
12	GB-T-70.1-2000-S-NL-M4X8	不锈钢内六角杯头螺丝M4X8	SUS 304	8	0.002	
11	GB-T-70.1-2000-S-NL-M4X14	不锈钢内六角杯头螺丝M4X14	SUS 304	8	0.002	
10	YG-TY-F02-005	后防护条	5052-H32	2	0.041	
9	YG-F01-1000-005	垫板	5052-H32	1	0.221	
8	YG-TY-XJD-001	自粘胶垫35X11X3	硅橡胶	4	0.0013	
7	CS0A-M3-7-NA-D5	埋头压铆铝螺柱铝本色M3X7	6063-T5	4	0.000	
6	YG-F01-1000-003	下盖板	6063-T5	1	0.786	
5	GB-T-973-1976-C-NI-M3X4	碳钢镀镍十字大扁头螺丝M3X4	普通碳钢	4	0.0005	
4	YG-TY-F01-005	拉手	5052-H32	2	0.079	
3	YG-F01-1000-004	侧板	6063-T5	2	0.103	
2	YG-F01-1000-002	上盖板	6063-T5	1	0.787	
1	YG-F01-1000-001	前后面板	5052-H32	2	0.473	
序号 (Item)	图号 (Drawing Number)	名称 (Part Name)	材料 (Material)	数量 (QTY)	单重 (Weight)	备注 (Note)

Tolerances (未注公差):		Material (材料): (装配图)		YONGU 正固	
0.5 to 6 ± 0.1		Weight: (重量) (Kg): 3.230			
6 to 30 ± 0.2		Protection: (表面处理):			
30 to 120 ± 0.3		Part Name (零/部件名称):			
120 to 400 ± 0.4		F01 机箱		Drawing Number (图号): YG-F01-1000-000	
Break sharp edges (未注锐边倒角): Ch 0.05 to 0.25 x45°		Drawn by (绘图): 许宏彬		Date (日期): 2020.12.17	
Position tolerances (未注位置公差): ±0.05		Check by (校对):		Date (日期):	
Angular tolerances (未注角度公差): <6° ± 10'		Signature by (批准):		Date (日期):	
<30° ± 20'		Size (图幅): A0		Scale (比例): 1:1	
<120° ± 30'		Sheet (页数):		Revision (版本): A1	
>120° ± 1°		1 / 1			

业务代码:



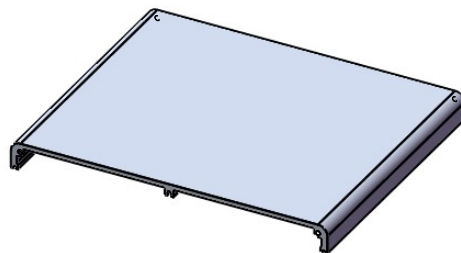
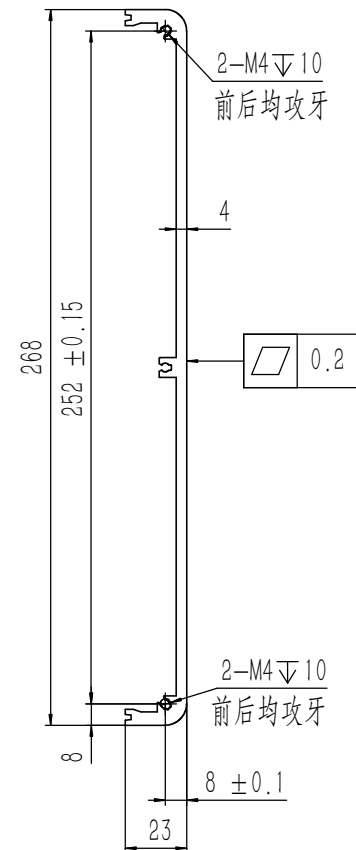
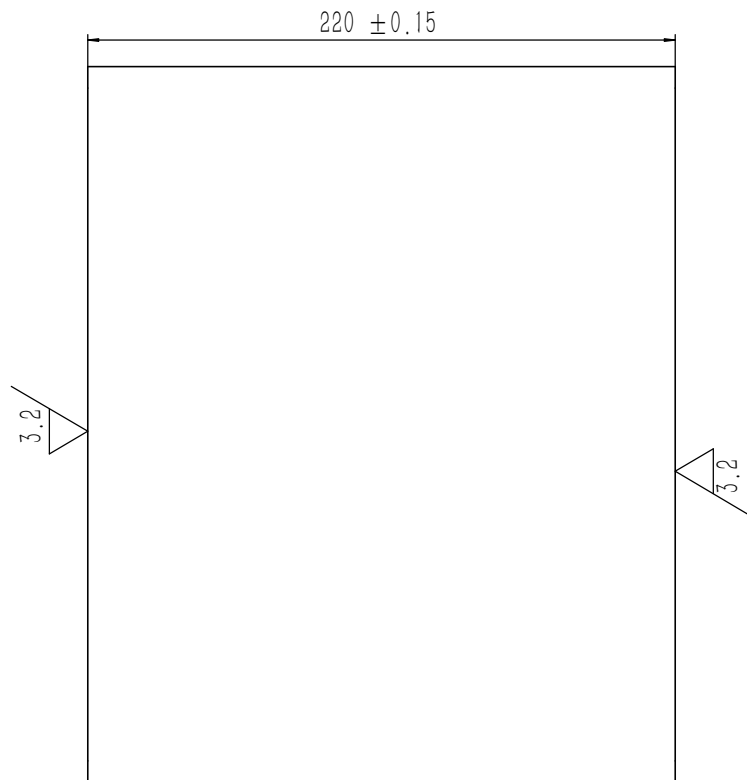
纹路方向



技术要求:
 1、零件加工表面不应有划痕、擦伤等损伤零件表面的缺陷;
 2、去除毛刺飞边,锐角倒钝;
 3、未标注尺寸见3D数模。

业务代码:

Tolerances (未注公差): 0.5 to 6 ± 0.1 6 to 30 ± 0.2 30 to 120 ± 0.3 120 to 400 ± 0.4	Material (材料):	5052-H32	YONGU 永固
	Weight: (重量) (Kg):	0.473	
Break sharp edges (未注锐边倒角): Ch 0.05 to 0.25 x45°	Protection: (表面处理):	喷砂银白	Drawing Number (图号): YG-F01-1000-001
	Angular tolerances (未注角度公差): <6° ± 10' <30° ± 20' <120° ± 30' >120° ± 1°	Part Name (零/部件名称):	
Position tolerances (未注位置公差): ± 0.05	Part Name (零/部件名称):	前后面板	Size: (图幅): A1
	Drawn by (绘图): 邓展锋	Date (日期): 2021.09.02	Scale (比例): 1:1
	Check by (校对):	Date (日期):	Sheet (页数):
	Signature by (批准):	Date (日期):	Revision (版本): A1
			1 / 1



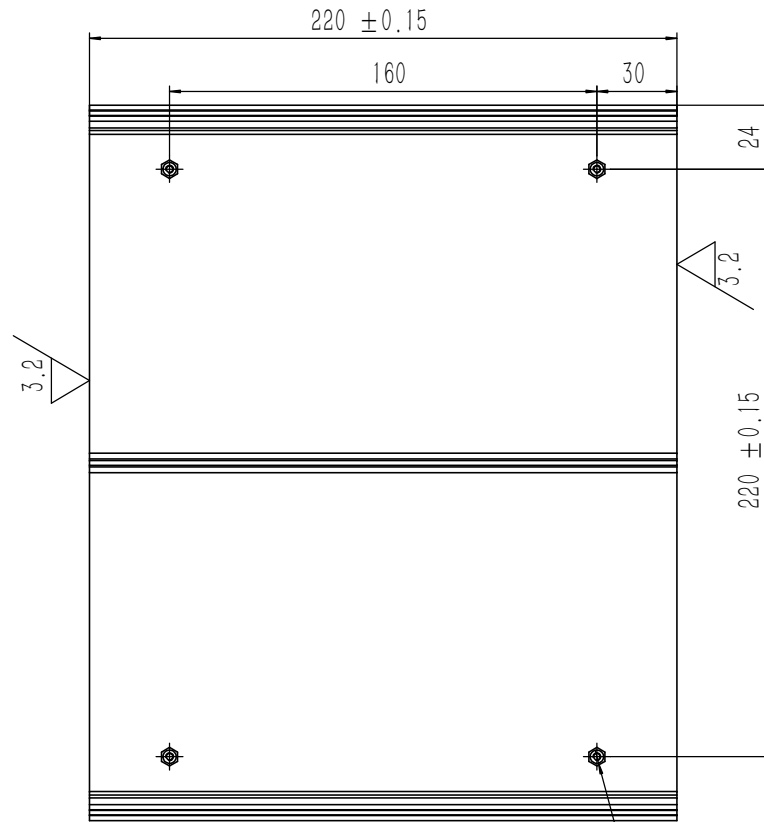
技术要求:

- 1、零件加工表面不应有划痕、擦伤等损伤零件表面的缺陷;
- 2、去除毛刺飞边, 锐角倒钝;
- 3、未标注尺寸见3D数模。

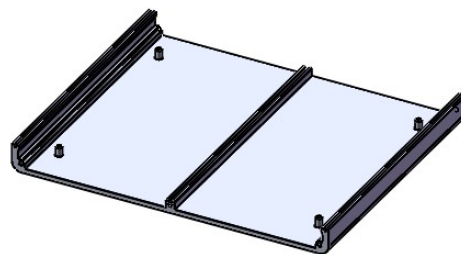
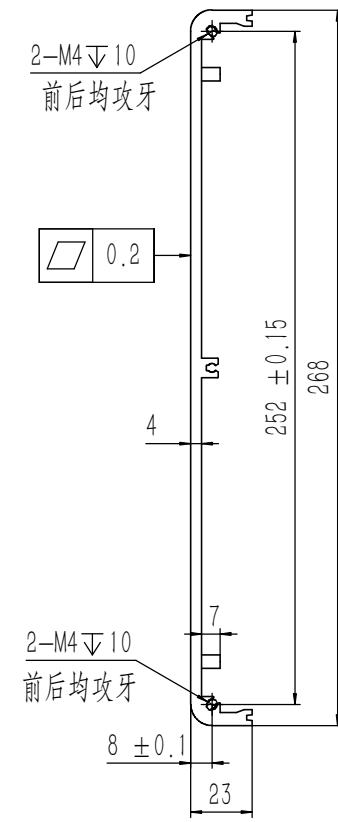
业务代码:

Break sharp edges (未注锐边倒角): Ch 0.05 to 0.25 x45°	Angular tolerances (未注角度公差): <6° ± 10' <30° ± 20' <120° ± 30' >120° ± 1°
Position tolerances (未注位置公差): ± 0.05	

Tolerances (未注公差): 0.5 to 6 ± 0.1 6 to 30 ± 0.2 30 to 120 ± 0.3 120 to 400 ± 0.4		Material (材料): 6063-T5	YONGU 永固
Weight: (重量) (Kg): 0.787		Protection: (表面处理): 喷砂银白	
Part Name (零/部件名称): 上盖板		Drawing Number (图号): YG-F01-1000-002	
Drawn by (绘图): 许宏彬	Date (日期): 2020.12.17	Size: (图幅): A1	Sheet (页数): 1 / 1
Check by (校对):	Date (日期):	Scale (比例): 1:1	
Signature by (批准):	Date (日期):	Revision (版本): A1	



4-埋头压铆铝螺柱铝本色M3X7底孔 $\phi 5 \nabla 2.5$

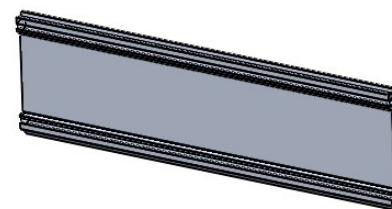
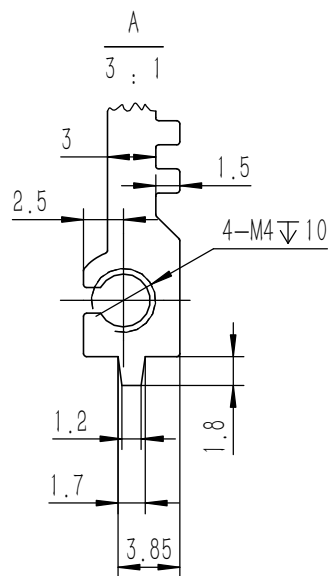
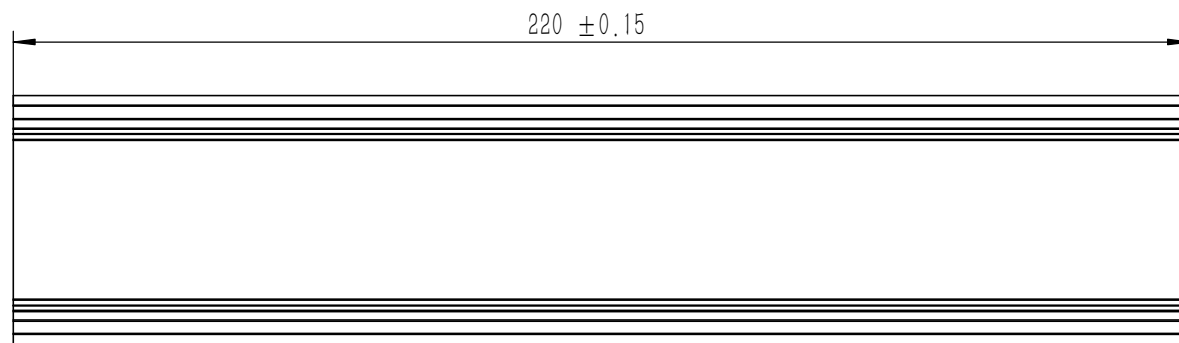
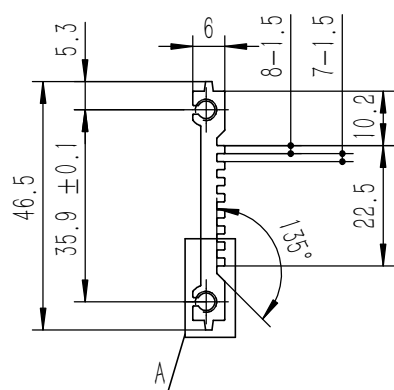


技术要求:
 1、零件加工表面不应有划痕、擦伤等损伤零件表面的缺陷;
 2、去除毛刺飞边,锐角倒钝;
 3、未标注尺寸见3D数模。

业务代码:

Break sharp edges (未注锐边倒角): Ch 0.05 to 0.25 x45°	Angular tolerances (未注角度公差): <6° ± 10' <30° ± 20' <120° ± 30' >120° ± 1°
Position tolerances (未注位置公差): ± 0.05	

Tolerances (未注公差): 0.5 to 6 ± 0.1 6 to 30 ± 0.2 30 to 120 ± 0.3 120 to 400 ± 0.4		Material (材料): 6063-T5		YONGU 永固	
Weight: (重量) (Kg): 0.788		Protection: (表面处理): 喷砂银白			
Part Name (零/部件名称): 下盖板				Drawing Number (图号): YG-F01-1000-003	
Drawn by (绘图): 许宏彬	Date (日期): 2020.11.24	Size: (图幅): A1	Sheet (页数): 1 / 1		
Check by (校对):	Date (日期):	Scale (比例): 1:1			
Signature by (批准):	Date (日期):	Revision (版本): A1			



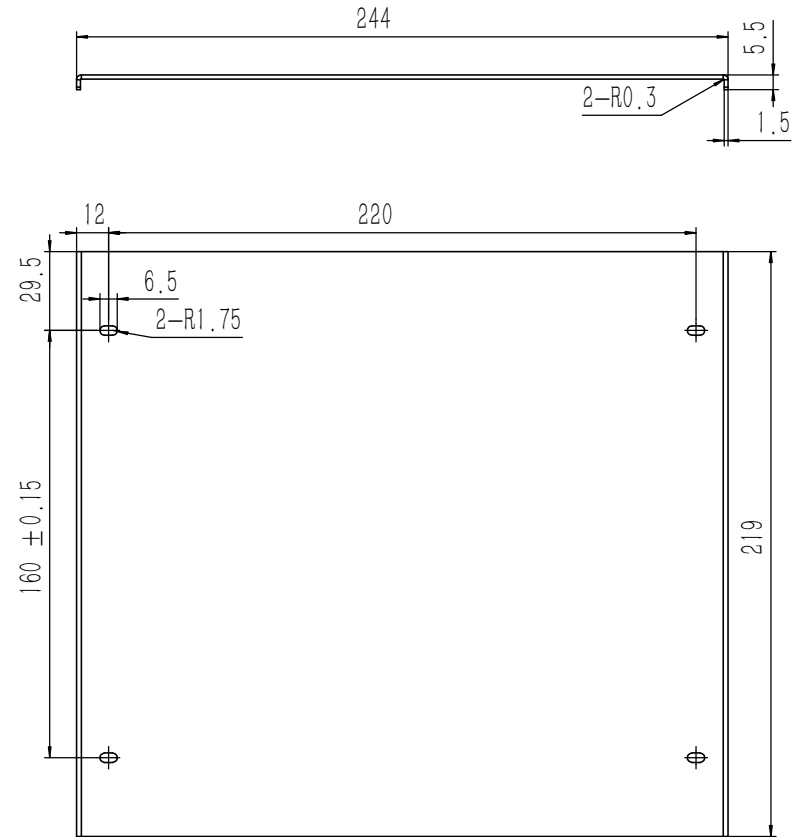
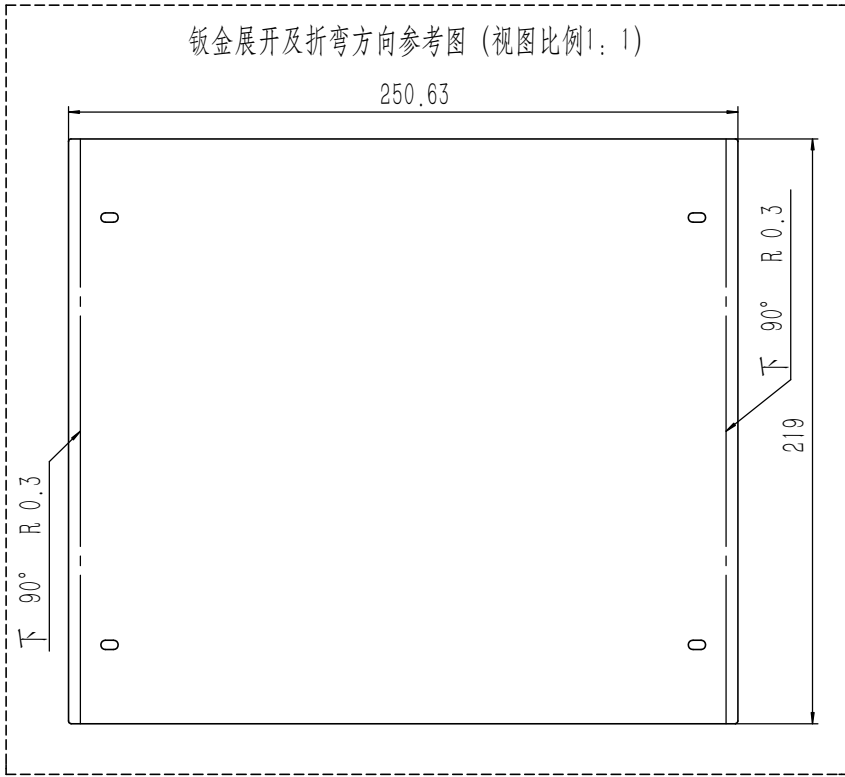
技术要求:

- 1、零件加工表面不应有划痕、擦伤等损伤零件表面的缺陷;
- 2、去除毛刺飞边, 锐角倒钝;
- 3、未标注尺寸见3D数模。

业务代码:

Tolerances (未注公差): 0.5 to 6 ± 0.1 6 to 30 ± 0.2 30 to 120 ± 0.3 120 to 400 ± 0.4	Material (材料):	6063-T5	YONGU 永固
	Weight: (重量) (Kg)	0.103	
Break sharp edges (未注锐边倒角): Ch 0.05 to 0.25 x45°	Protection: (表面处理):	喷砂翠蓝	Drawing Number (图号): YG-F01-1000-004
	Angular tolerances (未注角度公差):	侧板	
Position tolerances (未注位置公差): ±0.05	Part Name (零/部件名称):		Size: (图幅): A3
	<6° ± 10' <30° ± 20' <120° ± 30' >120° ± 1°	Drawn by (绘图): 许宏彬 Date (日期): 2020.11.24	
	Check by (校对): Signature by (批准):	Date (日期): Date (日期):	Scale (比例): 1:1 Revision (版本): A1

钣金展开及折弯方向参考图 (视图比例1:1)

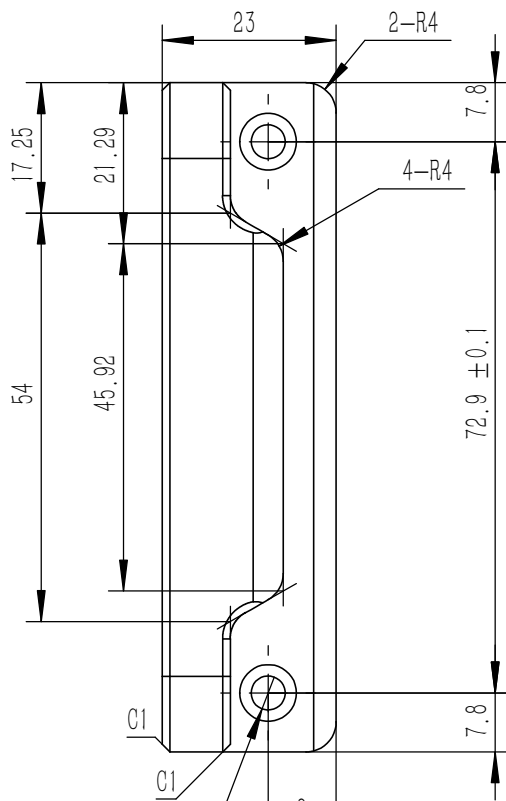
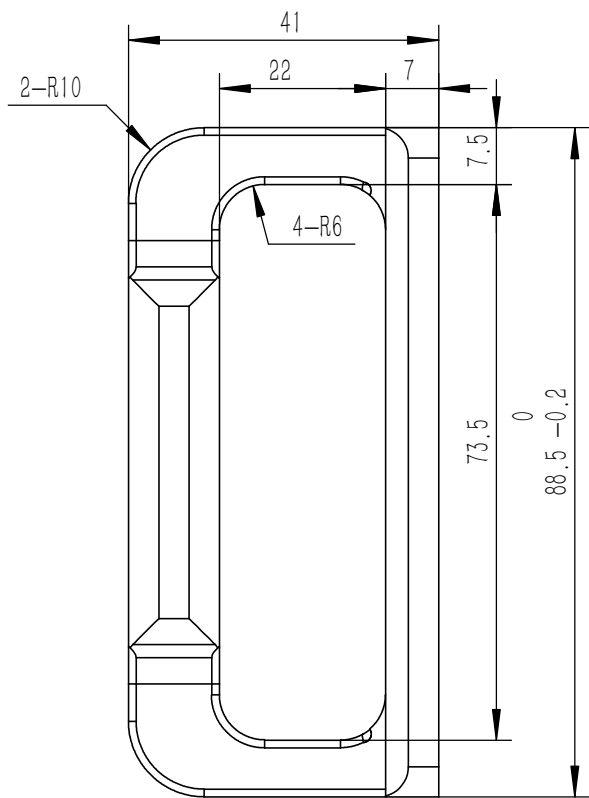


技术要求:

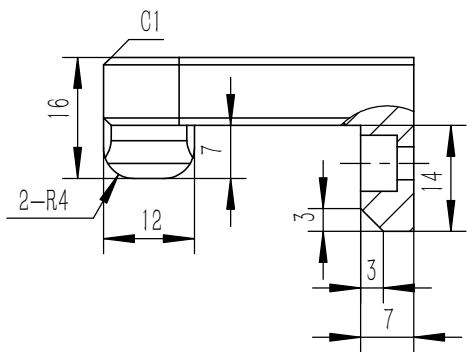
- 1、零件加工表面不应有划痕、擦伤等损伤零件表面的缺陷;
- 2、去除毛刺飞边,锐角倒钝;
- 3、未标注尺寸见3D数模。

业务代码:

Tolerances (未注公差): 0.5 to 6 ± 0.1 6 to 30 ± 0.2 30 to 120 ± 0.3 120 to 400 ± 0.4	Material (材料):	5052-H32	YONGU 永固					
	Weight: (重量) (Kg):	0.221						
Break sharp edges (未注锐边倒角): Ch 0.05 to 0.25 x45°	Protection: (表面处理):	毛坯	Drawing Number (图号): YG-F01-1000-005					
	Angular tolerances (未注角度公差): <6° ± 10' <30° ± 20' <120° ± 30' >120° ± 1°	Part Name (零/部件名称):		垫板				
Position tolerances (未注位置公差): ±0.05	Drawn by (绘图):	许宏彬	Date (日期):	2020.12.17	Size: (图幅):	A1	Sheet (页数):	1 / 1
	Check by (校对):		Date (日期):		Scale (比例):	1:1		
	Signature by (批准):		Date (日期):		Revision (版本):	A1		

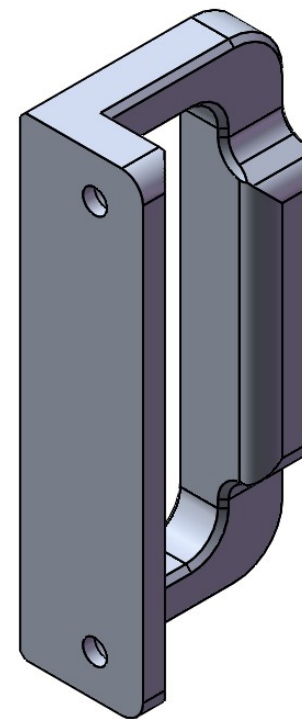


2- $\phi 4.5$ | $\phi 7.5$ $\nabla 4.8$



3.2

周边倒角C1

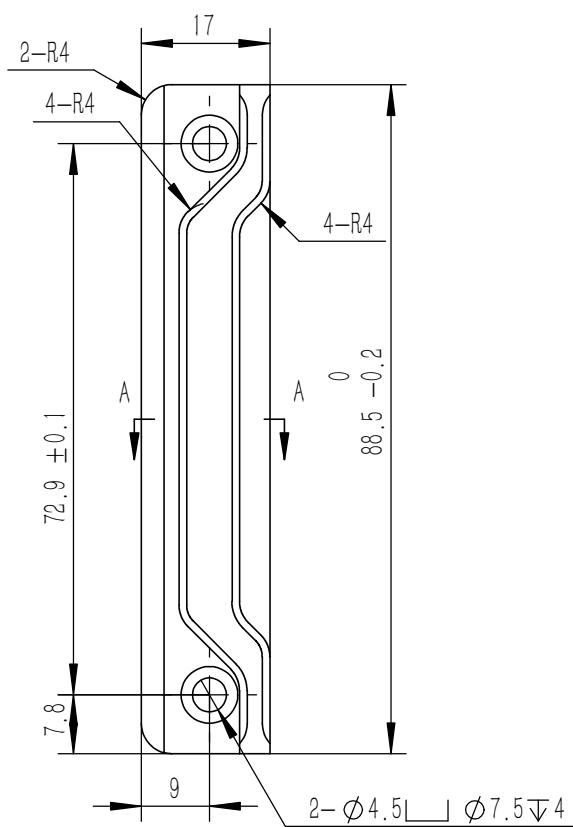


技术要求:

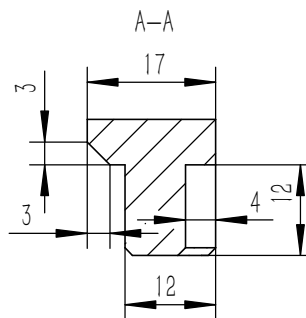
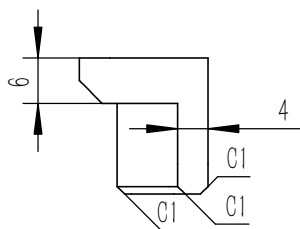
- 1、零件加工表面不应有划痕、擦伤等损伤零件表面的缺陷;
- 2、去除毛刺飞边, 锐角倒钝;
- 3、未标注尺寸见3D数模。

业务代码:

Tolerances (未注公差): 0.5 to 6 ± 0.1 6 to 30 ± 0.2 30 to 120 ± 0.3 120 to 400 ± 0.4	Material (材料): 5052-H32	YONGU 永固	
	Weight: (重量) (Kg) 0.079		
Break sharp edges (未注锐边倒角): Ch 0.05 to 0.25 x45°	Protection: (表面处理): 喷砂翠蓝	Part Name (零/部件名称): 拉手	
	Position tolerances (未注位置公差): ±0.05	Angular tolerances (未注角度公差): <6° ± 10' <30° ± 20' <120° ± 30' >120° ± 1°	Part Name (零/部件名称): 拉手
Material (材料): 5052-H32		Material (材料): 5052-H32	Material (材料): 5052-H32
Weight: (重量) (Kg) 0.079		Weight: (重量) (Kg) 0.079	Weight: (重量) (Kg) 0.079
Protection: (表面处理): 喷砂翠蓝		Protection: (表面处理): 喷砂翠蓝	Protection: (表面处理): 喷砂翠蓝
Part Name (零/部件名称): 拉手		Part Name (零/部件名称): 拉手	Part Name (零/部件名称): 拉手
Drawing Number (图号): YG-TY-F01-005		Drawing Number (图号): YG-TY-F01-005	Drawing Number (图号): YG-TY-F01-005
Drawn by (绘图): 邓展锋	Date (日期): 2021.09.02	Scale (比例): 1:1	Sheet (页数): 1 / 1
Check by (校对):	Date (日期):	Revision (版本): A1	
Signature by (批准):	Date (日期):		



全部 $\sqrt{3.2}$



- 技术要求:
 1、零件加工表面不应有划痕、擦伤等损伤零件表面的缺陷;
 2、去除毛刺飞边,锐角倒钝;
 3、未标注尺寸见3D数模。

业务代码:

Tolerances (未注公差): 0.5 to 6 ± 0.1 6 to 30 ± 0.2 30 to 120 ± 0.3 120 to 400 ± 0.4	Material (材料): 5052-H32	YONGU 永固	
	Weight: (重量) (Kg) 0.041		
Break sharp edges (未注锐边倒角): Ch 0.05 to 0.25 x45°	Protection: (表面处理): 喷砂翠蓝	Part Name (零/部件名称): 后防护条	
	Position tolerances (未注位置公差): ±0.05	Part Name (零/部件名称): 后防护条	Drawing Number (图号): YG-TY-F02-005
Angular tolerances (未注角度公差): <6° ± 10' <30° ± 20' <120° ± 30' >120° ± 1°	Drawn by (绘图): 邓展锋	Date (日期): 2021.09.03	Size: (图幅): A4
	Check by (校对):	Date (日期):	Scale (比例): 1:1
	Signature by (批准):	Date (日期):	Revision (版本): A1
		Sheet (页数): 1 / 1	