

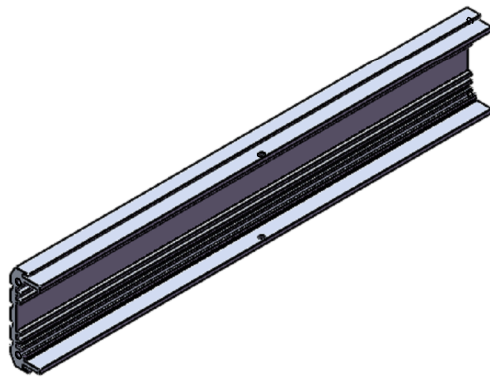
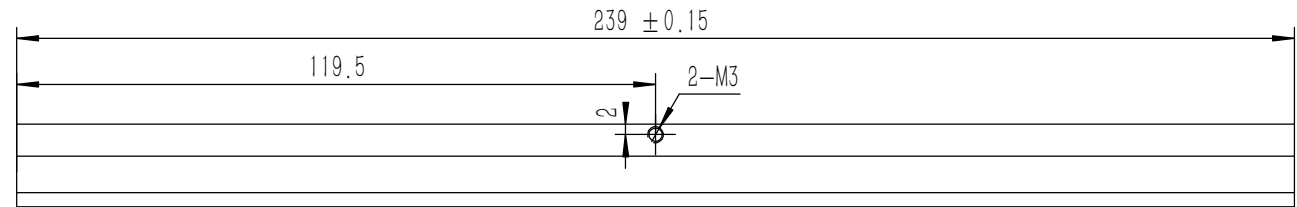
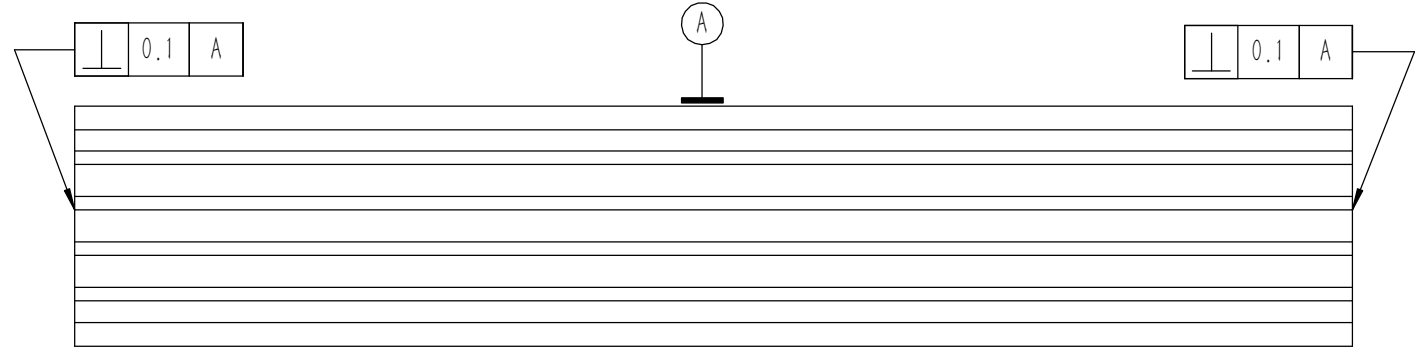
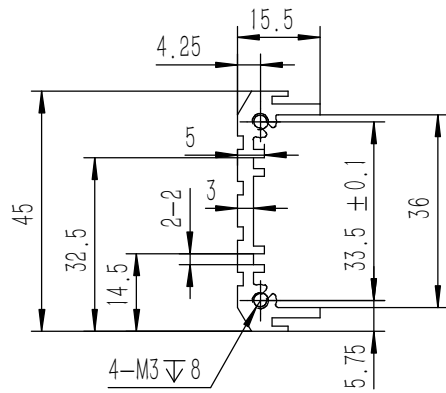
技术要求:

- 1、必须按照设计、工艺要求及本规定和有关标准进行装配;
- 2、所有零部件(包括外购、外协件)必须具有检验合格证方能进行装配;
- 3、零件在装配前必须清理和清洗干净,不得有毛刺、飞边、氧化皮、锈蚀、切屑、砂粒、灰尘和油污等,并应符合相应清洁度要求;
- 4、装配过程中零件不得磕碰、划伤和锈蚀;
- 5、油漆未干的零件不得进行装配;
- 6、相对运动的零件,装配时接触面间应加润滑油脂;
- 7、各零、部件装配后相对位置应准确。

序号	图号	名称	材料	数量	单重	备注
7	GB-T-70.1-2000-S-NL-M3X8	不锈钢内六角杯头螺 丝M3X8	SUS 304	4	0.001	
6	GB-T-819.1-2000-C-BE-M3X8	碳钢发黑十字沉头螺 丝M3X8	普通碳钢	4	0.0005	
5	GB-T-819.1-2000-C-BE-M3X6	碳钢发黑十字沉头螺 丝M3X6	普通碳钢	8	0.0004	
4	YG-W17B-0000-004	盖板	5052-H32	2	0.412	
3	YG-W17B-0000-003	后面板	6063-T5	1	0.137	
2	YG-W17B-0000-002	前面板	5052-H32	1	0.301	
1	YG-W17B-0000-001	侧板	6063-T5	2	0.139	

Break sharp edges (未注锐边倒角): Ch 0.05 to 0.25 x45°	Angular tolerances (未注角度公差): <6° ± 10' <30° ± 20' <120° ± 30' >120° ± 1°
Position tolerances (未注位置公差): ± 0.05	

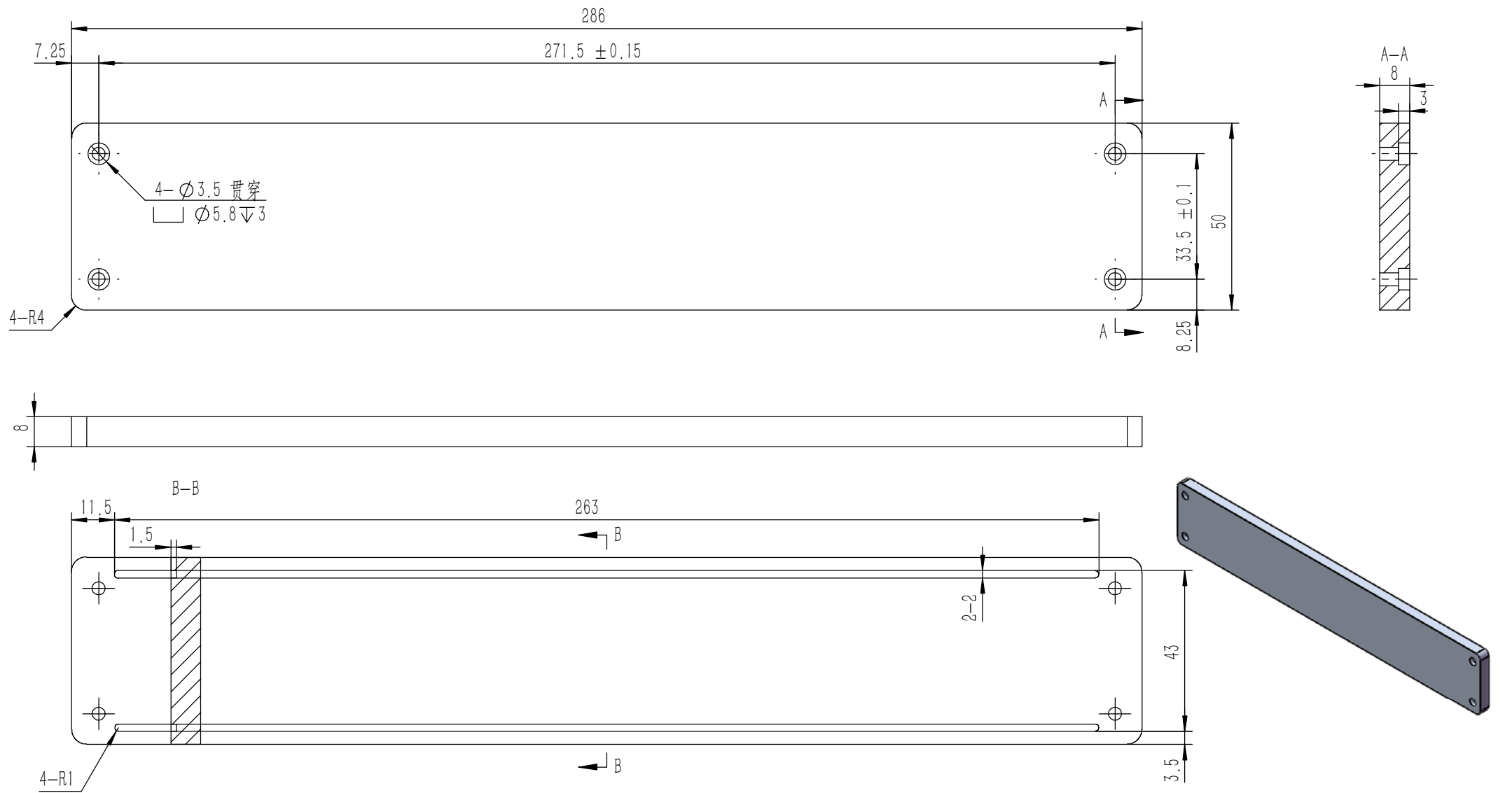
Tolerances (未注公差): 0.5 to 6 ± 0.1 6 to 30 ± 0.2 30 to 120 ± 0.3 120 to 400 ± 0.4		Material (材料): (装配图)		YONGU 永固	
		Weight: (重量) (Kg): 1.548			
		Protection: (表面处理):		Part Name (零/部件名称): W17B功放	
		Drawing Number (图号): YG-W17B-0000-000		Size: (图幅): A1	
Drawn by (绘图): 莫永康		Date (日期): 2020.05.14		Scale (比例): 1:1	
Check by (校对):		Date (日期):		Revision (版本): A1	
Signature by (批准):		Date (日期):		Sheet (页数): 1 / 1	



技术要求:

- 1、零件加工表面不应有划痕、擦伤等损伤零件表面的缺陷;
- 2、去除毛刺飞边, 锐角倒钝;
- 3、未标注尺寸见3D数模。

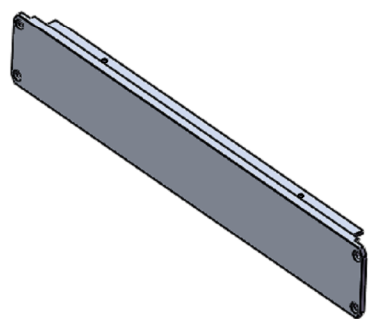
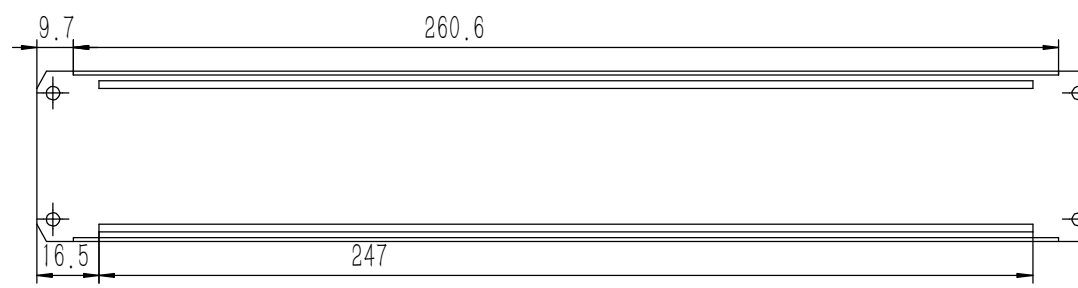
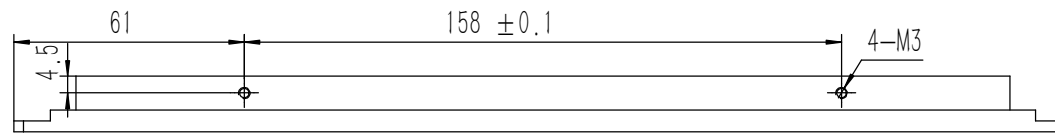
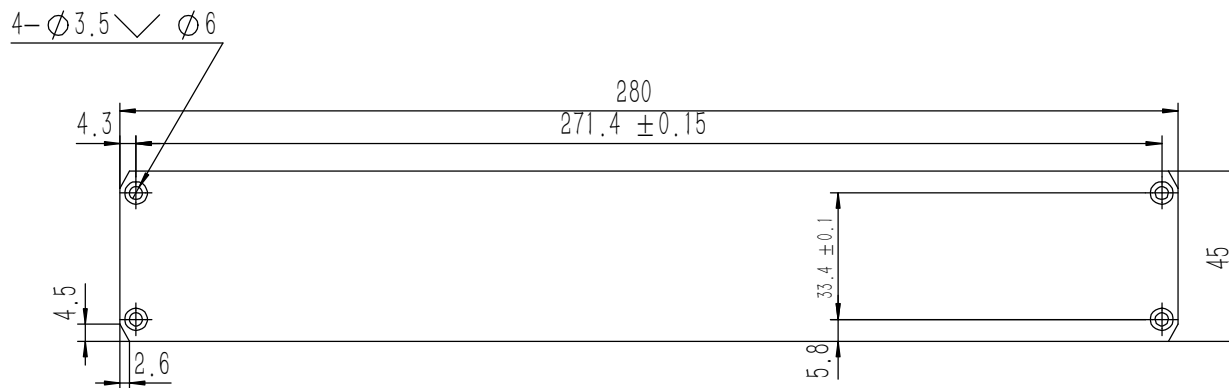
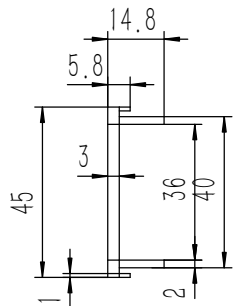
Tolerances (未注公差): 0.5 to 6 ± 0.1 6 to 30 ± 0.2 30 to 120 ± 0.3 120 to 400 ± 0.4	Material (材料):	6063-T5		YONGU 永固
	Weight: (重量) (Kg)	0.139		
Break sharp edges (未注锐边倒角): Ch 0.05 to 0.25 x45°	Protection: (表面处理):			Drawing Number (图号): YG-W17B-0000-001
	Part Name (零/部件名称):	侧板		
Angular tolerances (未注角度公差): <6° ± 10' <30° ± 20' <120° ± 30' >120° ± 1°	Position tolerances (未注位置公差): ±0.05	Part Name (零/部件名称):	侧板	Size (图幅): A3
		Drawn by (绘图): 莫永康	Date (日期): 2020.05.12	Scale (比例): 1:1
		Check by (校对):	Date (日期):	Revision (版本): A1
		Signature by (批准):	Date (日期):	Sheet (页数): 1 / 1



技术要求:
 1、零件加工表面不应有划痕、擦伤等损伤零件表面的缺陷;
 2、去除毛刺飞边,锐角倒钝;
 3、未标注尺寸见3D数模。

Tolerances (未注公差): 0.5 to 6 ± 0.1 6 to 30 ± 0.2 30 to 120 ± 0.3 120 to 400 ± 0.4	Material (材料):	5052-H32	
	Weight: (重量) (Kg)	0.301	
Break sharp edges (未注锐边倒角): Ch 0.05 to 0.25 x45°	Protection: (表面处理):		
	Position tolerances (未注位置公差): ±0.05	Part Name (零/部件名称):	前面板
Angular tolerances (未注角度公差): <6° ± 10' <30° ± 20' <120° ± 30' >120° ± 1°	Drawn by (绘图):	莫永康	Date (日期): 2020.05.141
		Check by (校对):	Date (日期):
	Signature by (批准):	Date (日期):	Revision (版本): A1
		Drawing Number (图号): YG-W17B-0000-002	
		Size (图幅): A3	Sheet (页数): 1 / 1
		Scale (比例): 1:1	

YONGU 永固

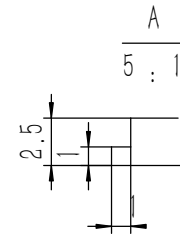
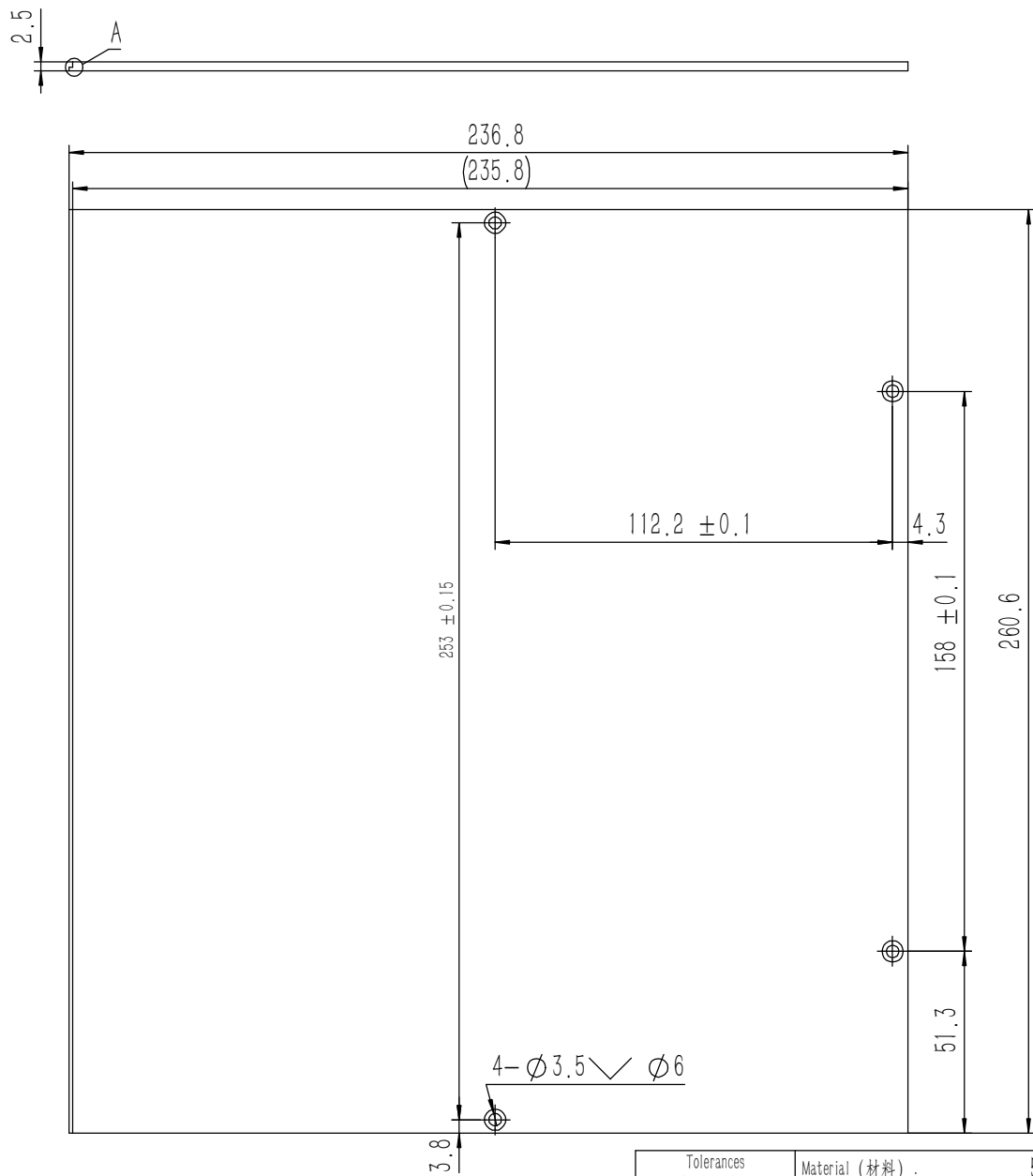


技术要求:

- 1、零件加工表面不应有划痕、擦伤等损伤零件表面的缺陷;
- 2、去除毛刺飞边, 锐角倒钝;
- 3、未标注尺寸见3D数模。

Tolerances (未注公差): 0.5 to 6 ± 0.1 6 to 30 ± 0.2 30 to 120 ± 0.3 120 to 400 ± 0.4	Material (材料):	6063-T5	
	Weight: (重量) (Kg):	0.137	
Break sharp edges (未注锐边倒角): Ch 0.05 to 0.25 x45°	Protection: (表面处理):		
	Position tolerances (未注位置公差): ±0.05	Part Name (零/部件名称):	后面板
Angular tolerances (未注角度公差): <6° ± 10' <30° ± 20' <120° ± 30' >120° ± 1°	Part Name (零/部件名称):	后面板	Drawing Number (图号): YG-W17B-0000-003
	Drawn by (绘图): 莫永康	Date (日期): 2020.05.14	Size: (图幅): A2
	Check by (校对):	Date (日期):	Scale (比例): 1:1
	Signature by (批准):	Date (日期):	Revision (版本): A1
			Sheet (页数): 1 / 1





技术要求:

- 1、零件加工表面不应有划痕、擦伤等损伤零件表面的缺陷;
- 2、去除毛刺飞边, 锐角倒钝;
- 3、未标注尺寸见3D数模。

<p>Tolerances (未注公差):</p> <p>0.5 to 6 ± 0.1</p> <p>6 to 30 ± 0.2</p> <p>30 to 120 ± 0.3</p> <p>120 to 400 ± 0.4</p>	Material (材料):	5052-H32	<p>YONGU 永固</p>	
	Weight: (重量) (Kg):	0.412		
	Protection: (表面处理):			
	Part Name (零/部件名称):	盖板		Drawing Number (图号):
<p>Break sharp edges (未注锐边倒角):</p> <p>Ch 0.05 to 0.25 x45°</p>	<p>Angular tolerances (未注角度公差):</p> <p><6° ± 10'</p> <p><30° ± 20'</p> <p><120° ± 30'</p> <p>>120° ± 1°</p>	<p>Drawn by (绘图): 莫永康</p> <p>Date (日期): 2020.05.14</p>	<p>Size: (图幅): A2</p> <p>Scale (比例): 1:1</p>	<p>Sheet (页数):</p> <p>1 / 1</p>
<p>Position tolerances (未注位置公差):</p> <p>±0.05</p>		<p>Check by (校对):</p> <p>Date (日期):</p>	<p>Revision (版本): A1</p>	
		<p>Signature by (批准):</p> <p>Date (日期):</p>		