

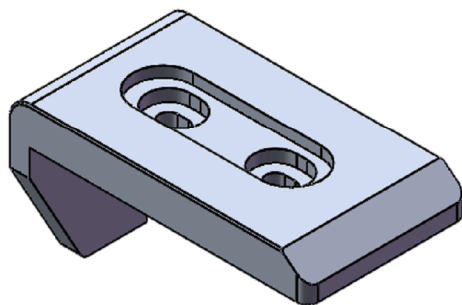
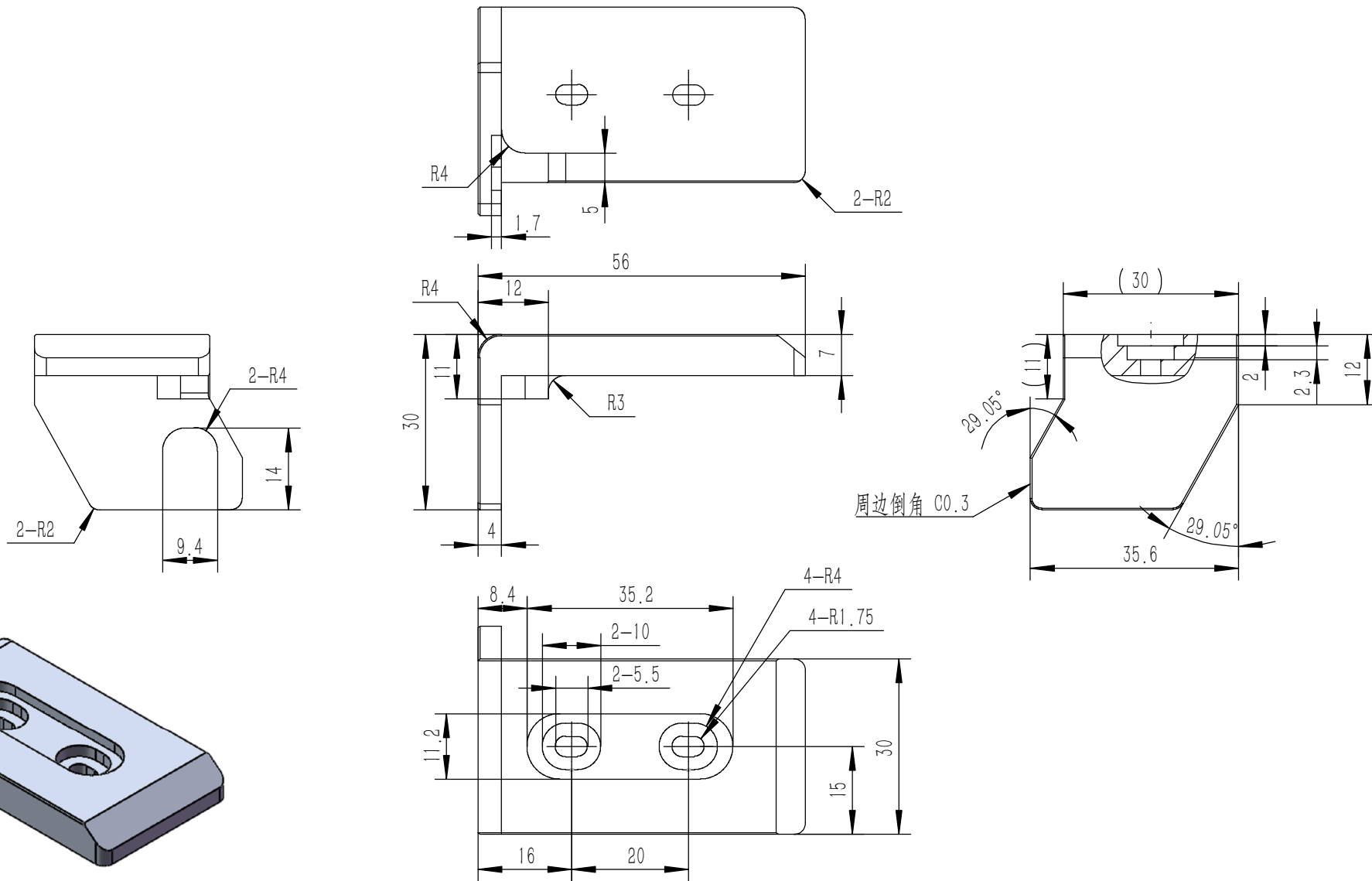
22	DN-9250-S-NL-M3	不锈钢防松垫圈	SUS 304	12	0.000	
21	YG-TY-XJD-001	自粘胶垫35X11X3	硅橡胶	8	0.0013	
20	GB-T-70.3-2000-C-NI-M3X6	芳生镀白镍内六角沉头螺丝M3X6	普通碳钢	8	0.0004	
19	YG-TY-A10-001	面板上固定件1	电解板	2	0.033	
18	YG-TY-A07-004	后防护条-4U	5052-H32	2	0.072	
17	S-M3-1-ZI	压铆螺母镀白锌M3X1	普通碳钢	8	0.3750	
16	YG-TY-B01-002	上下盖板	5052-H32	1	0.423	
15	YG-TY-A11-001	面板下固定件1	电解板	2	0.039	
14	YG-TY-B04-004	B组合侧板	6063-T5	2	0.137	
13	YG-TY-A09-004	侧板连接件	电解板	4	0.044	
12	BS0-M3-5-ZI-D5.4	压铆螺柱 M3X5	普通碳钢	8	0.001	
11	YG-TY-A13-002	A垫板	5052-H32	1	0.228	
10	YG-TY-B03-004	B组合侧板	6063-T5	4	0.248	
9	GB-T-973-1976-C-NI-M3X12	碳钢镀锌十字大扁头螺丝M3X12	普通碳钢	16	0.001	
8	YG-TY-A08-004	A侧板固定件 4U	6063-T5	4	0.065	
7	YG-TY-A06-004	拉手-4U	6063-T5	2	0.145	
6	YG-TY-A12-004	前后面板-4U	5052-H32	2	0.625	
5	YG-TY-B02-002	上盖板	5052-H32	1	0.403	
4	YG-TY-B05-001	B包角1	6063-T5	4	0.035	
3	GB-T-973-1976-C-NI-M3X4	碳钢镀锌十字大扁头螺丝M3X4	普通碳钢	38	0.0005	
2	GB-T-973-1976-C-NI-M3X6	碳钢镀锌十字大扁头螺丝M3X6	普通碳钢	24	0.0006	
1	YG-TY-B05-002	B包角2	6063-T5	4	0.035	
序号	图号	名称	材料	数量	单重	备注

技术要求:

- 1、必须按照设计、工艺要求及本规定和有关标准进行装配;
- 2、所有零部件(包括外购、外协件)必须具有检验合格证方能进行装配;
- 3、零件在装配前必须清理和清洗干净,不得有毛刺、飞边、氧化皮、锈蚀、切屑、砂粒、灰尘和油污等,并应符合相应清洁度要求;
- 4、装配过程中零件不得磕碰、划伤和锈蚀;
- 5、油漆未干的零件不得进行装配;
- 6、相对运动的零件,装配时接触面间应加润滑油脂;
- 7、各零、部件装配后相对位置应准确。

Break sharp edges (未注锐边倒角): Ch 0.05 to 0.25 x45°	Angular tolerances (未注角度公差): <6° ± 10' <30° ± 20' <120° ± 30' >120° ± 1°
Position tolerances (未注位置公差): ± 0.05	

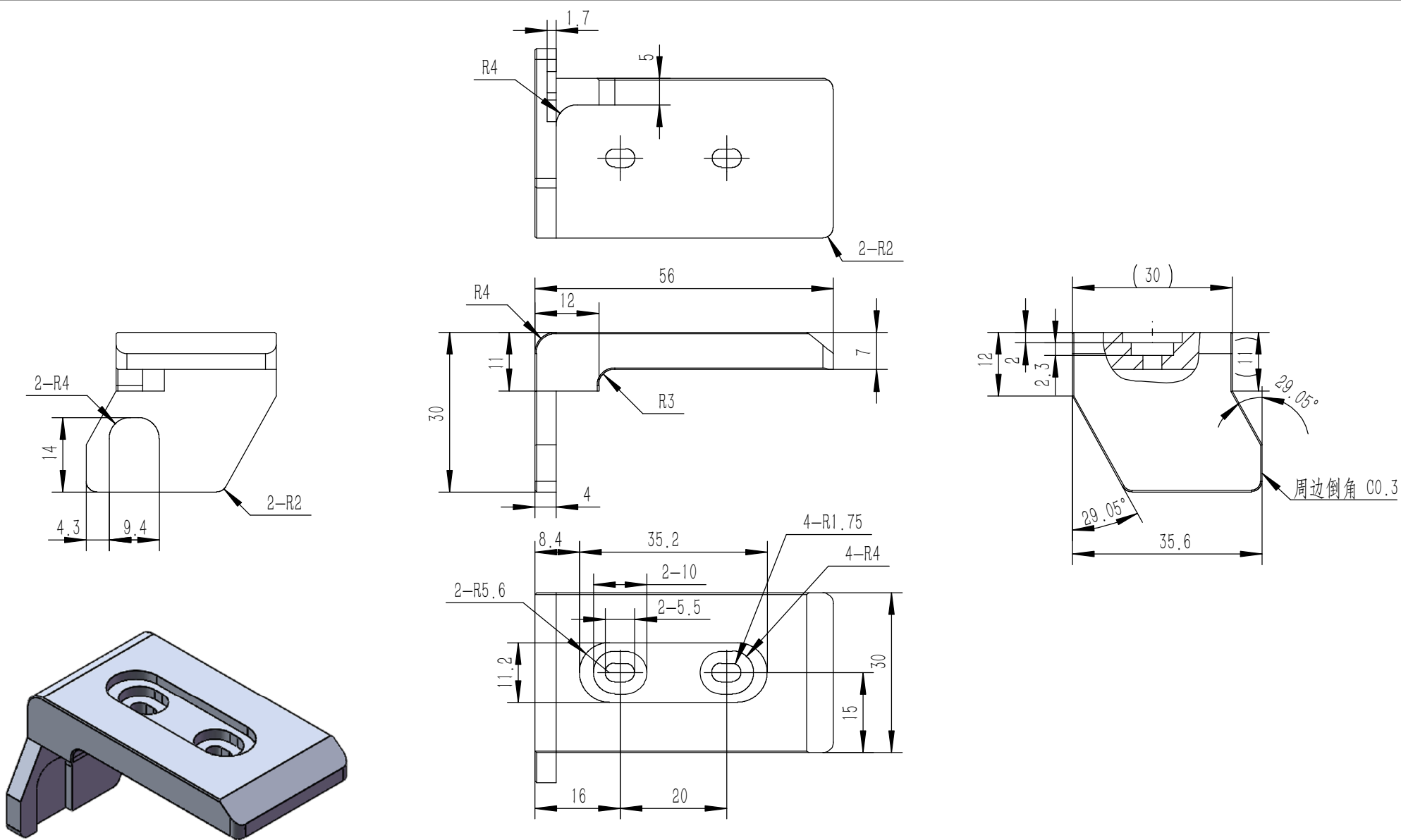
Tolerances (未注公差): 0.5 to 6 ± 0.1 6 to 30 ± 0.2 30 to 120 ± 0.3 120 to 400 ± 0.4		Material (材料): (装配图)			
		Weight: (重量) (Kg): 4.934			
		Protection: (表面处理):			
		Part Name (零/部件名称):		Drawing Number (图号):	
		B04机箱		YG-B04-1000-000	
		Drawn by (绘图): 邓展锋		Date (日期): 2020.05.22	
		Check by (校对):		Date (日期):	
		Signature by (批准):		Date (日期):	
				Size (图幅): A0	
				Scale (比例): 1:1.3	
				Sheet (页数):	
				Revision (版本): A1	
				1 / 1	



- 技术要求:
- 1、零件加工表面不应有划痕、擦伤等损伤零件表面的缺陷;
 - 2、去除毛刺飞边, 锐角倒钝;
 - 3、未标注尺寸见3D数模。

Tolerances (未注公差):	Material (材料):	6063-T5	
	Weight: (重量) (Kg)	0.035	
0.5 to 6 ± 0.1	Protection: (表面处理):		
6 to 30 ± 0.2	Part Name (零/部件名称):	B包角2	
30 to 120 ± 0.3	Drawing Number (图号):	YG-TY-B05-002	
120 to 400 ± 0.4	Drawn by (绘图):	Date (日期): 2020.05.18	Size: (图幅): A4
Break sharp edges (未注锐边倒角):	Check by (校对):	Date (日期):	Scale (比例): 1:1
Ch 0.05 to 0.25 x45°	Signature by (批准):	Date (日期):	Revision (版本): A1
Position tolerances (未注位置公差):			Sheet (页数): 1 / 1
±0.05			
Angular tolerances (未注角度公差):			
<6° ± 10'			
<30° ± 20'			
<120° ± 30'			
>120° ± 1°			

YONGU 永固

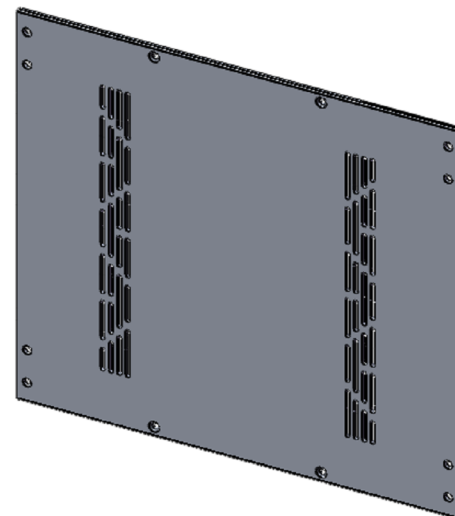
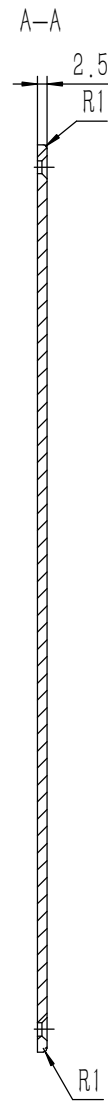
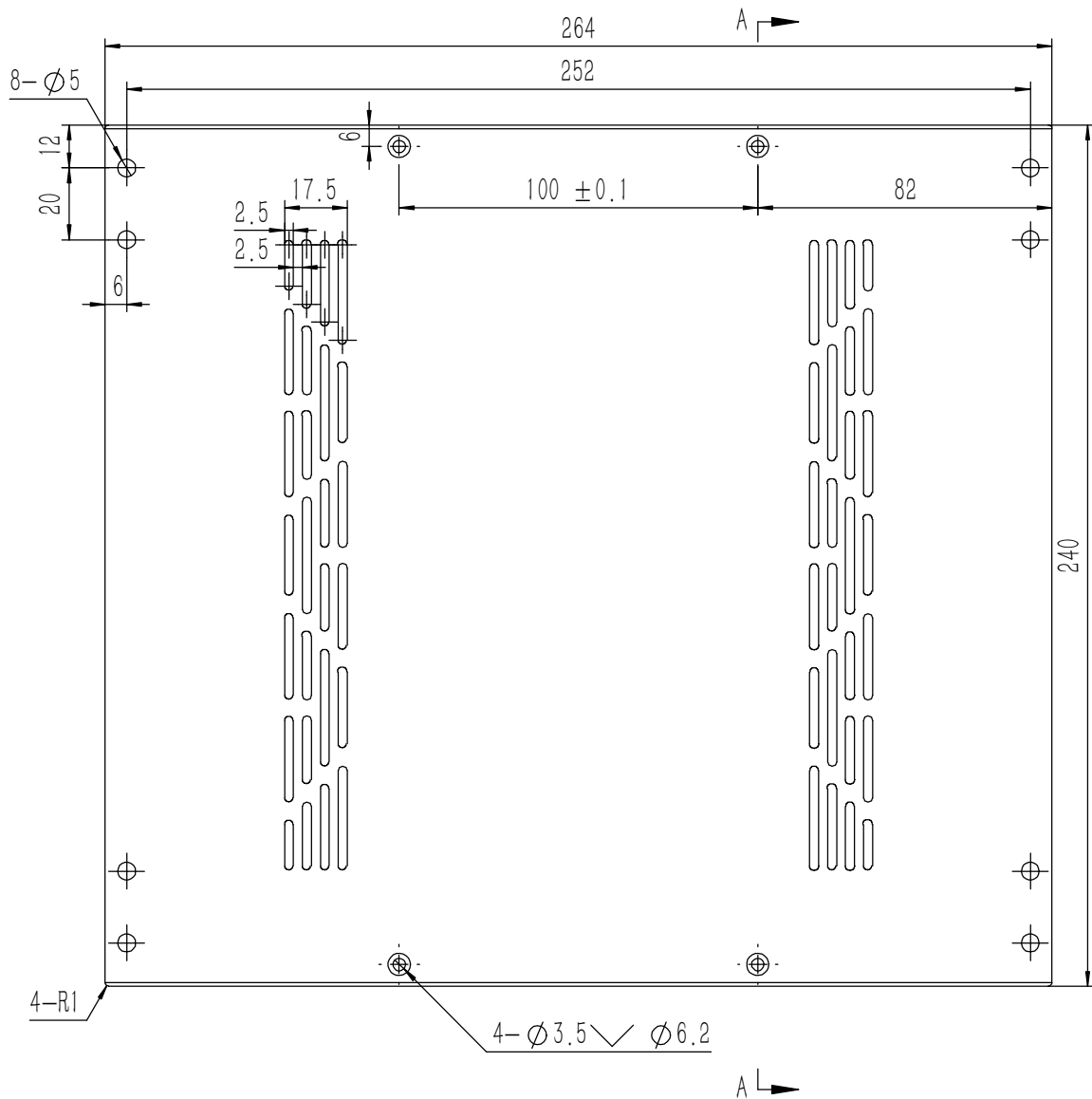


技术要求:
 1、零件加工表面不应有划痕、擦伤等损伤零件表面的缺陷;
 2、去除毛刺飞边,锐角倒钝;
 3、未标注尺寸见3D数模。

Tolerances (未注公差): 0.5 to 6 ± 0.1 6 to 30 ± 0.2 30 to 120 ± 0.3 120 to 400 ± 0.4	Material (材料):	6063-T5	
	Weight: (重量) (Kg)	0.035	
Break sharp edges (未注锐边倒角): Ch 0.05 to 0.25 x45° Position tolerances (未注位置公差): ±0.05	Protection: (表面处理):		
	Part Name (零/部件名称):	B包角1	
Angular tolerances (未注角度公差): <6° ± 10' <30° ± 20' <120° ± 30' >120° ± 1°	Part Name (零/部件名称):	B包角1	
	Angular tolerances (未注角度公差):		
Material (材料):	Date (日期):	2020.05.18	Size: (图幅): A4
Weight: (重量) (Kg):	Date (日期):		Scale (比例): 1:1
Protection: (表面处理):	Signature by (批准):		Revision (版本): A1
Part Name (零/部件名称):	Date (日期):		Sheet (页数): 1 / 1



Drawing Number (图号): YG-TY-B05-001
 Sheet (页数): 1 / 1

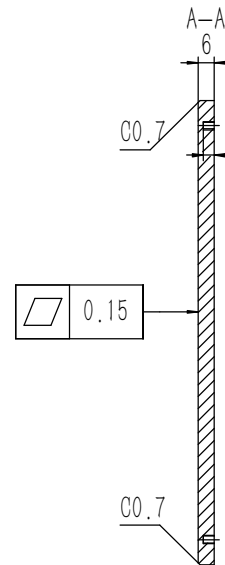
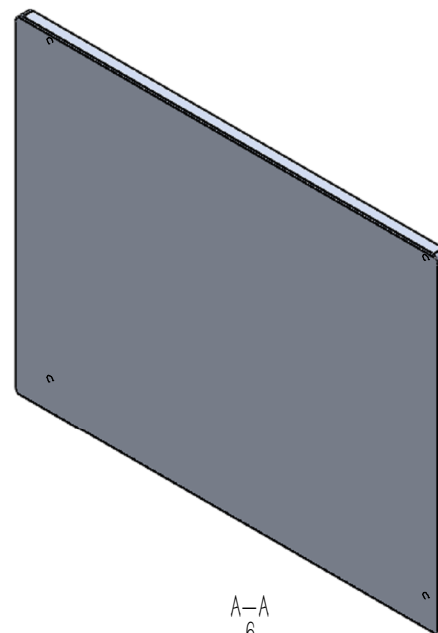
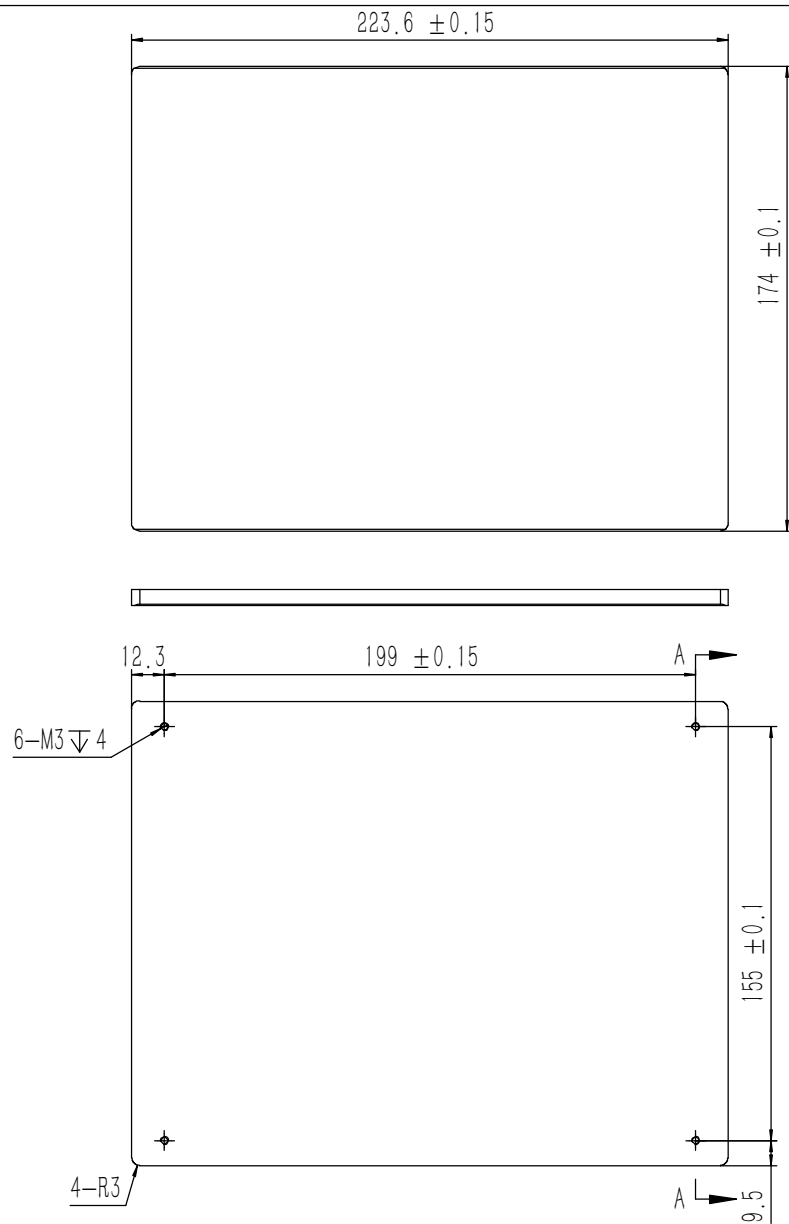


技术要求:

- 1、零件加工表面不应有划痕、擦伤等损伤零件表面的缺陷;
- 2、去除毛刺飞边,锐角倒钝;
- 3、未标注尺寸见3D数模。

Tolerances (未注公差): 0.5 to 6 ± 0.1 6 to 30 ± 0.2 30 to 120 ± 0.3 120 to 400 ± 0.4	Material (材料):	5052-H32	
	Weight: (重量) (Kg):	0.403	
Break sharp edges (未注锐边倒角): Ch 0.05 to 0.25 x45°	Protection: (表面处理):		
	Position tolerances (未注位置公差): ±0.05	Part Name (零/部件名称):	上盖板
Angular tolerances (未注角度公差): <6° ± 10' <30° ± 20' <120° ± 30' >120° ± 1°	Signature by (批准):	Date (日期):	2020.05.18
	Check by (校对):	Date (日期):	
Drawing Number (图号):		YG-TY-B02-002	
Size (图幅):		A2	
Scale (比例):		1:1	
Revision (版本):		A1	
Sheet (页数):		1 / 1	

YONGU 永固

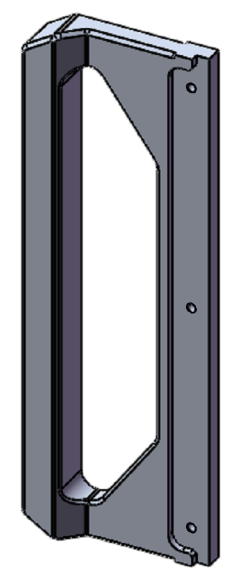
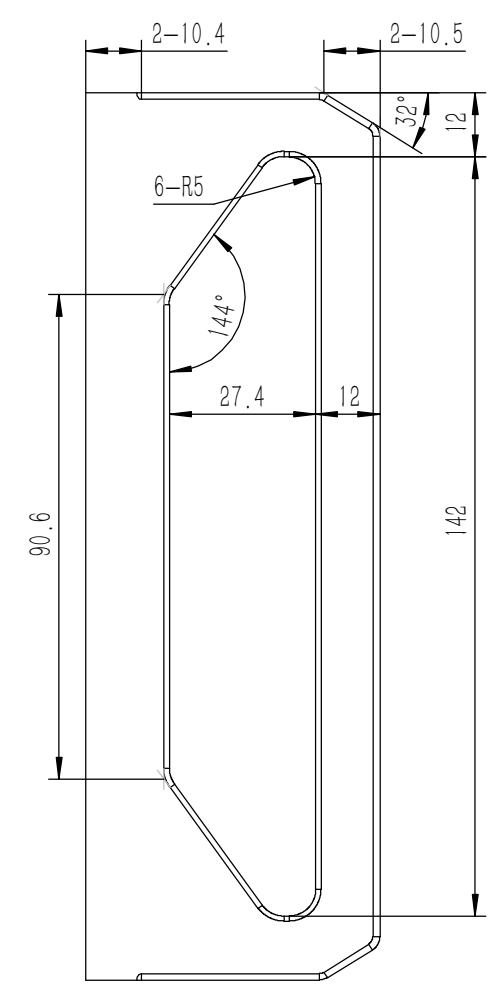
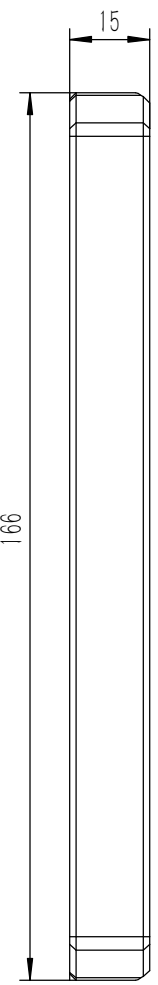
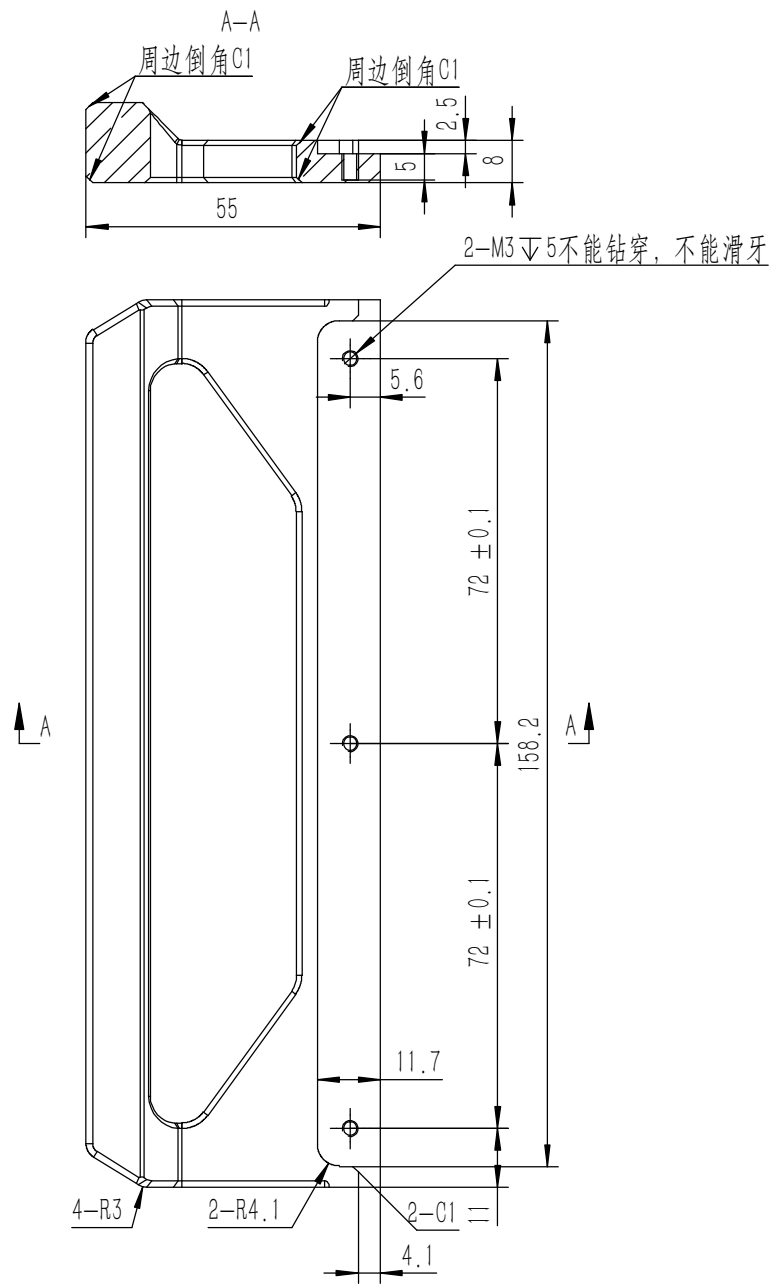


技术要求:

- 1、零件加工表面不应有划痕、擦伤等损伤零件表面的缺陷;
- 2、去除毛刺飞边,锐角倒钝;
- 3、未标注尺寸见3D数模。

Tolerances (未注公差): 0.5 to 6 ± 0.1 6 to 30 ± 0.2 30 to 120 ± 0.3 120 to 400 ± 0.4	Material (材料):	5052-H32	
	Weight: (重量) (Kg):	0.625	
Break sharp edges (未注锐边倒角): Ch 0.05 to 0.25 x45°	Protection: (表面处理):		
	Position tolerances (未注位置公差): ± 0.05	Part Name (零/部件名称):	Drawing Number (图号):
Angular tolerances (未注角度公差): <6° ± 10' <30° ± 20' <120° ± 30' >120° ± 1°	前后面板-4U		YG-TY-A12-004
	Drawn by (绘图): 莫永康	Date (日期): 2020.05.18	Size: (图幅): A1
	Check by (校对):	Date (日期):	Scale (比例): 1:1
	Signature by (批准):	Date (日期):	Revision (版本): A1
			Sheet (页数): 1 / 1

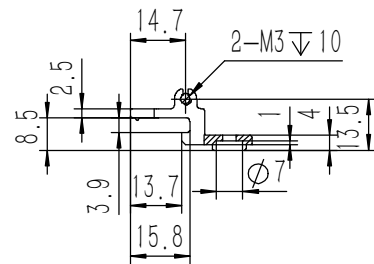
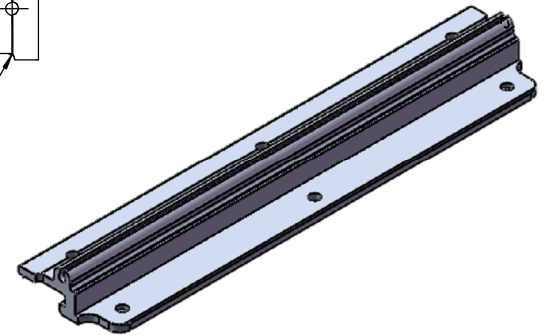
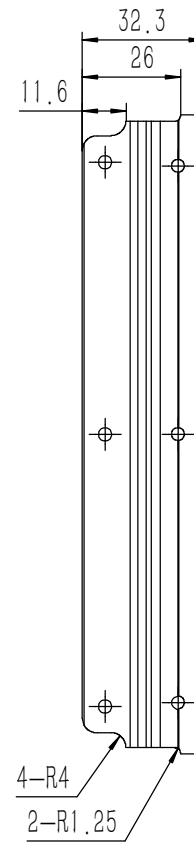
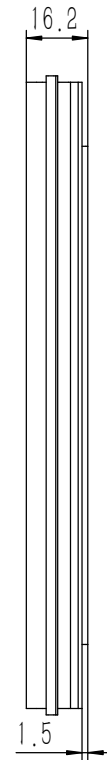
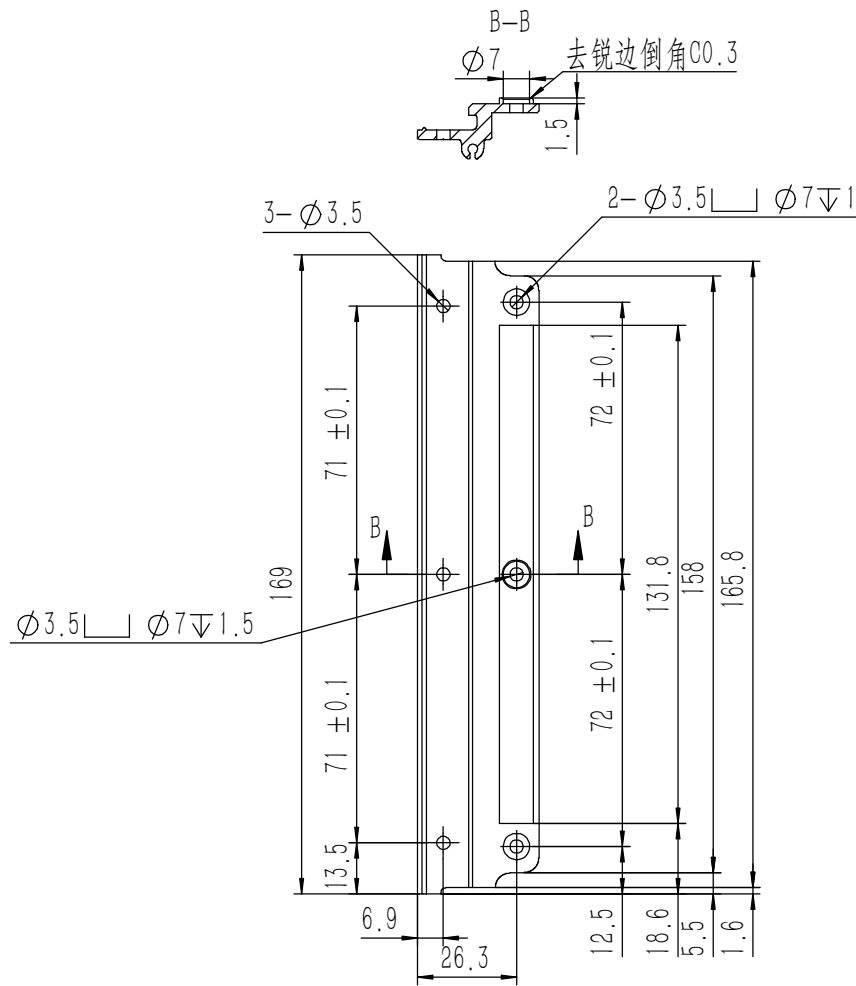
YONGU 永固



技术要求:
 1、零件加工表面不应有划痕、擦伤等损伤零件表面的缺陷;
 2、去除毛刺飞边, 锐角倒钝;
 3、未标注尺寸见3D数模。

Tolerances (未注公差): 0.5 to 6 ± 0.1 6 to 30 ± 0.2 30 to 120 ± 0.3 120 to 400 ± 0.4	Material (材料):	6063-T5	
	Weight: (重量) (Kg)	0.145	
Break sharp edges (未注锐边倒角): Ch 0.05 to 0.25 x45°	Protection: (表面处理):		
	Position tolerances (未注位置公差): ±0.05	Part Name (零/部件名称):	拉手-4U
Angular tolerances (未注角度公差): <6° ± 10' <30° ± 20' <120° ± 30' >120° ± 1°	Part Name (零/部件名称):	拉手-4U	
	Drawing Number (图号):	YG-TY-A06-004	
Drawn by (绘图): 邓展锋	Date (日期): 2020.05.18	Size (图幅): A3	Sheet (页数): 1 / 1
Check by (校对):	Date (日期):	Scale (比例): 1:1	
Signature by (批准):	Date (日期):	Revision (版本): A1	

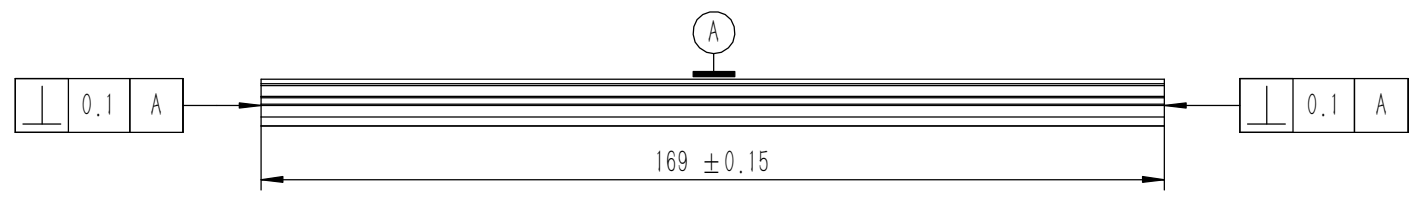
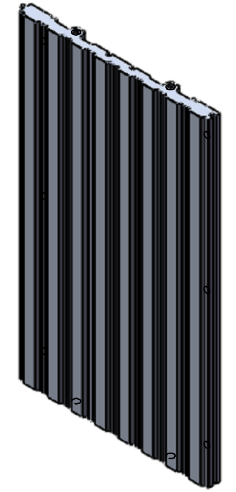
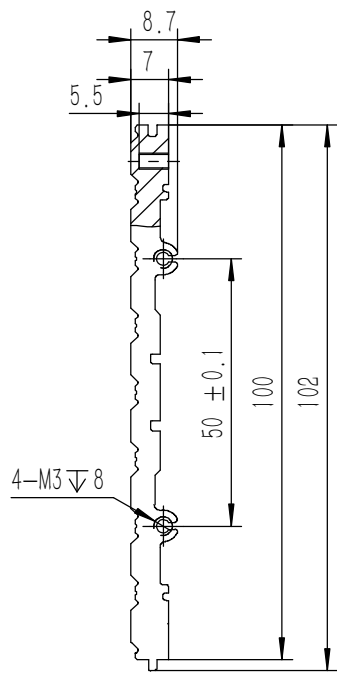
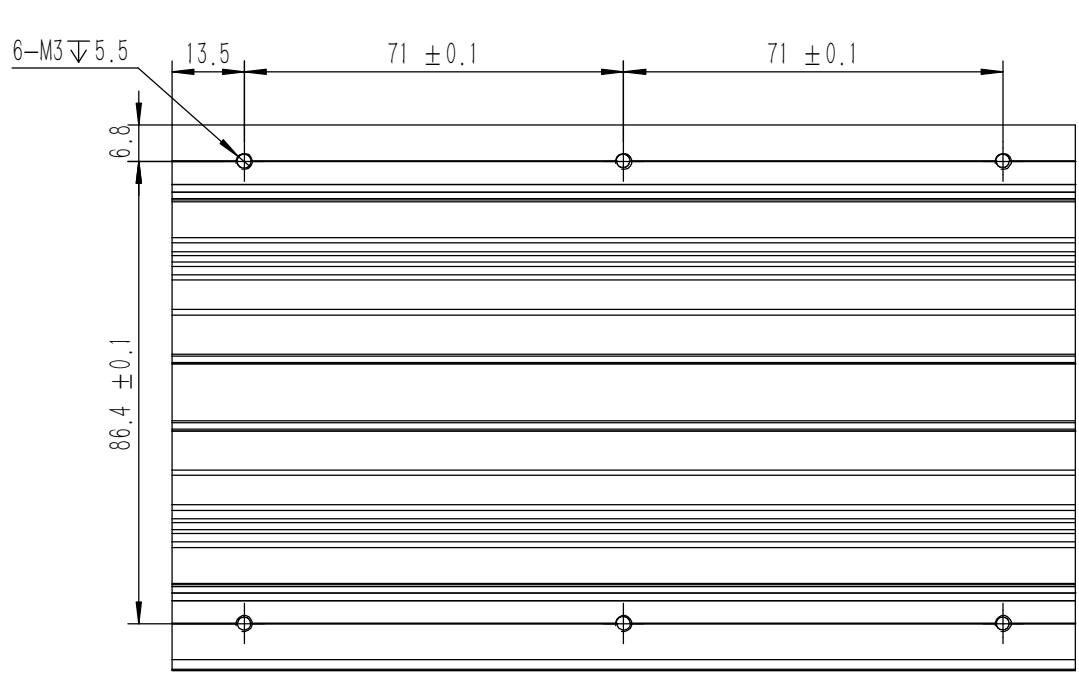




技术要求:

- 1、零件加工表面不应有划痕、擦伤等损伤零件表面的缺陷;
- 2、去除毛刺飞边,锐角倒钝;
- 3、未标注尺寸见3D数模。

Tolerances (未注公差): 0.5 to 6 ± 0.1 6 to 30 ± 0.2 30 to 120 ± 0.3 120 to 400 ± 0.4	Material (材料):	6063-T5	YONGU 永固
	Weight: (重量) (Kg):	0.065	
	Protection: (表面处理):		
	Part Name (零/部件名称):	A侧板固定件 4U	
Break sharp edges (未注锐边倒角): Ch 0.05 to 0.25 x45°	Angular tolerances (未注角度公差): <6° ± 10' <30° ± 20' <120° ± 30' >120° ± 1°	Drawing Number (图号): YG-TY-A08-004	Size: (图幅): A2
Position tolerances (未注位置公差): ±0.05	Drawn by (绘图): 邓展锋	Date (日期): 2020.05.18	Scale (比例): 1:1
	Check by (校对):	Date (日期):	Revision (版本): A1
	Signature by (批准):	Date (日期):	Sheet (页数): 1 / 1

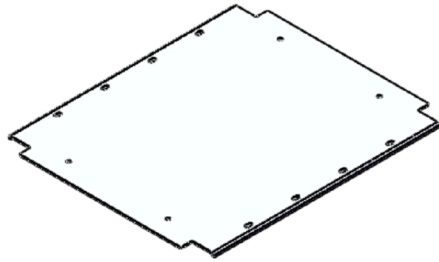
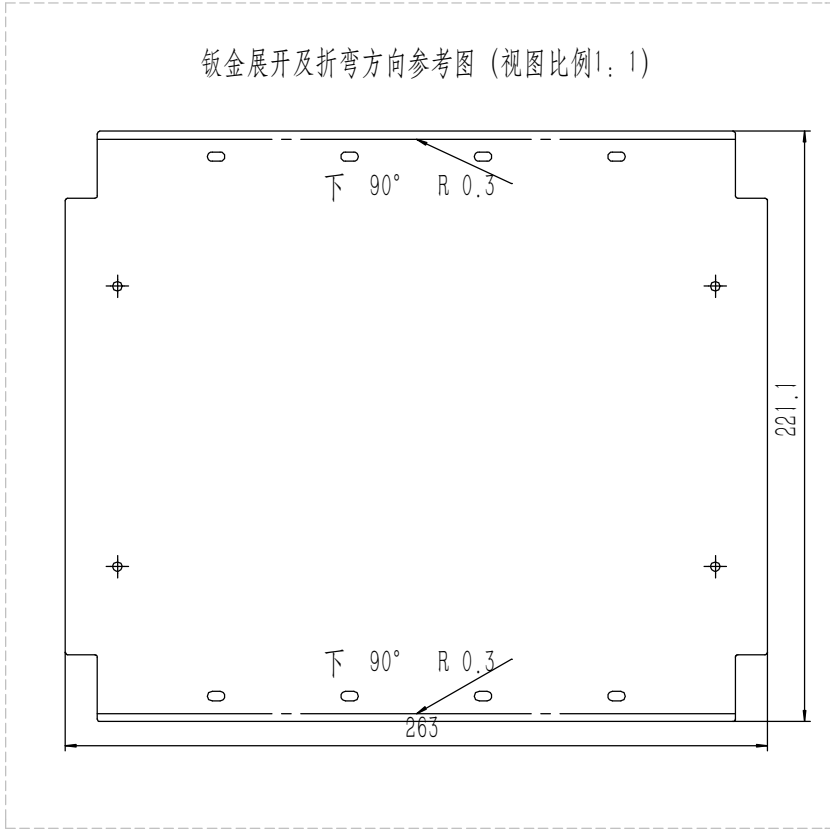


技术要求:
 1、零件加工表面不应有划痕、擦伤等损伤零件表面的缺陷;
 2、去除毛刺飞边,锐角倒钝;
 3、未标注尺寸见3D数模。

Tolerances (未注公差): 0.5 to 6 ± 0.1 6 to 30 ± 0.2 30 to 120 ± 0.3 120 to 400 ± 0.4	Material (材料):	6063-T5	
	Weight: (重量) (Kg)	0.248	
Break sharp edges (未注锐边倒角): Ch 0.05 to 0.25 x45°	Protection: (表面处理):		
	Part Name (零/部件名称):	B组合侧板	
Angular tolerances (未注角度公差): <6° ± 10' <30° ± 20' <120° ± 30' >120° ± 1°	Position tolerances (未注位置公差): ±0.05	Part Name (零/部件名称):	B组合侧板
	Material (材料):	6063-T5	Weight: (重量) (Kg): 0.248
Drawing Number (图号):		YG-TY-B03-004	
Drawing by (绘图): 邓展锋		Date (日期): 2020.05.19	Size (图幅): A3
Check by (校对):		Date (日期):	Scale (比例): 1:1
Signature by (批准):		Date (日期):	Revision (版本): A1
			Sheet (页数): 1 / 1

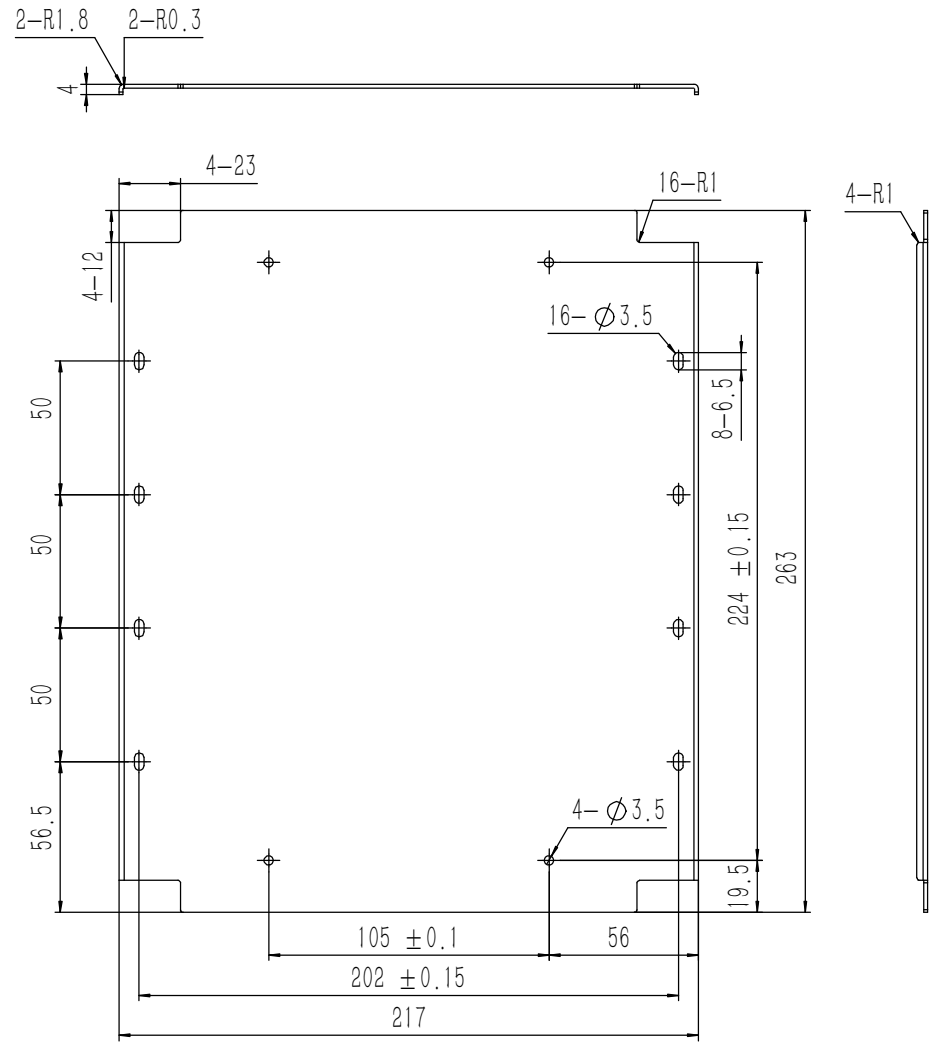


钣金展开及折弯方向参考图 (视图比例1:1)



技术要求:

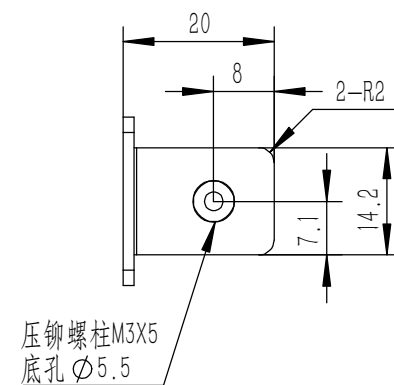
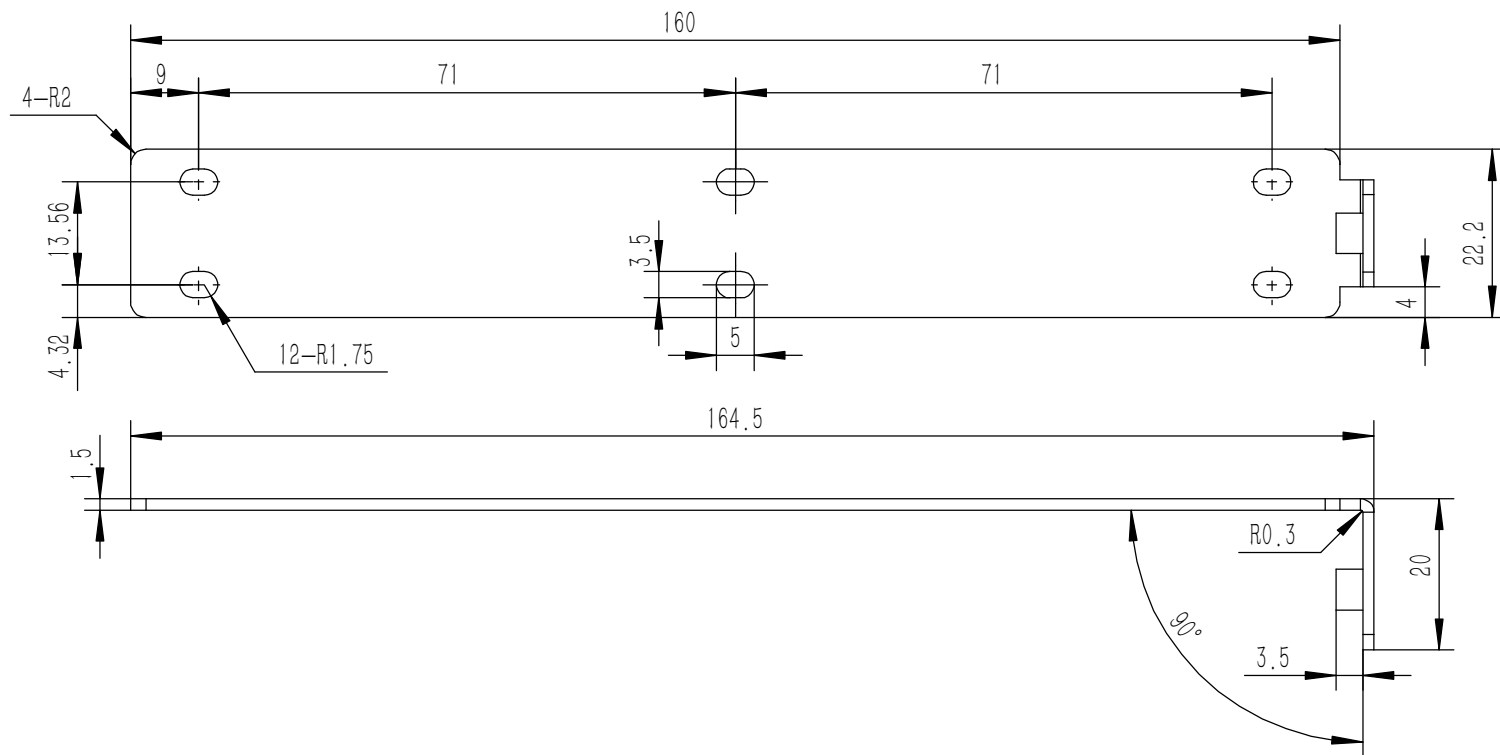
- 1、零件加工表面不应有划痕、擦伤等损伤零件表面的缺陷;
- 2、去除毛刺飞边, 锐角倒钝;
- 3、未标注尺寸见3D数模。



业务代码:

Tolerances (未注公差): 0.5 to 6 ± 0.1 6 to 30 ± 0.2 30 to 120 ± 0.3 120 to 400 ± 0.4	Material (材料):	5052-H32	
	Weight: (重量) (Kg):	0.228	
	Protection: (表面处理):		
	Part Name (零/部件名称):	A垫板	
Break sharp edges (未注锐边倒角): Ch 0.05 to 0.25 x45°	Angular tolerances (未注角度公差): <6° ± 10' <30° ± 20' <120° ± 30' >120° ± 1°	Position tolerances (未注位置公差):	± 0.05
Drawing Number (图号):		YG-TY-A13-002	
Drawn by (绘图): 许宏彬	Date (日期): 2020.09.17	Size: (图幅): A1	Sheet (页数): 1 / 1
Check by (校对):	Date (日期):	Scale (比例): 1:1	
Signature by (批准):	Date (日期):	Revision (版本): A1	





钣金展开及折弯方向参考图 (视图比例1:1)

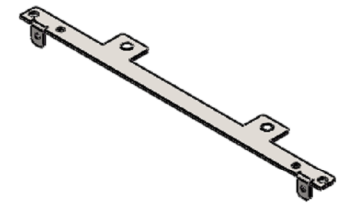
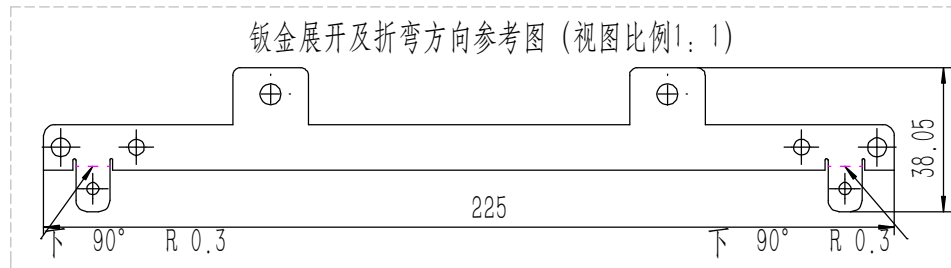
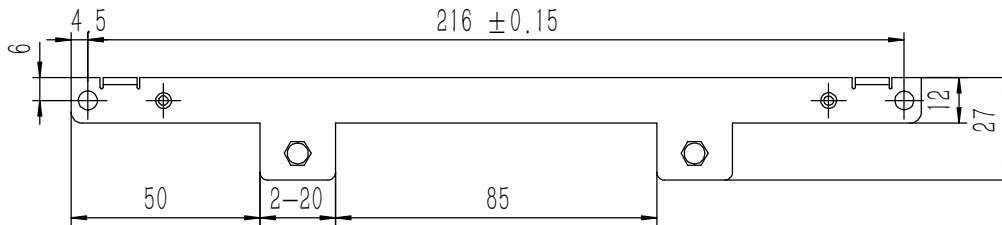
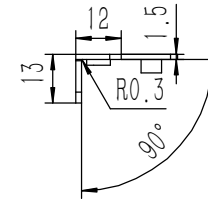
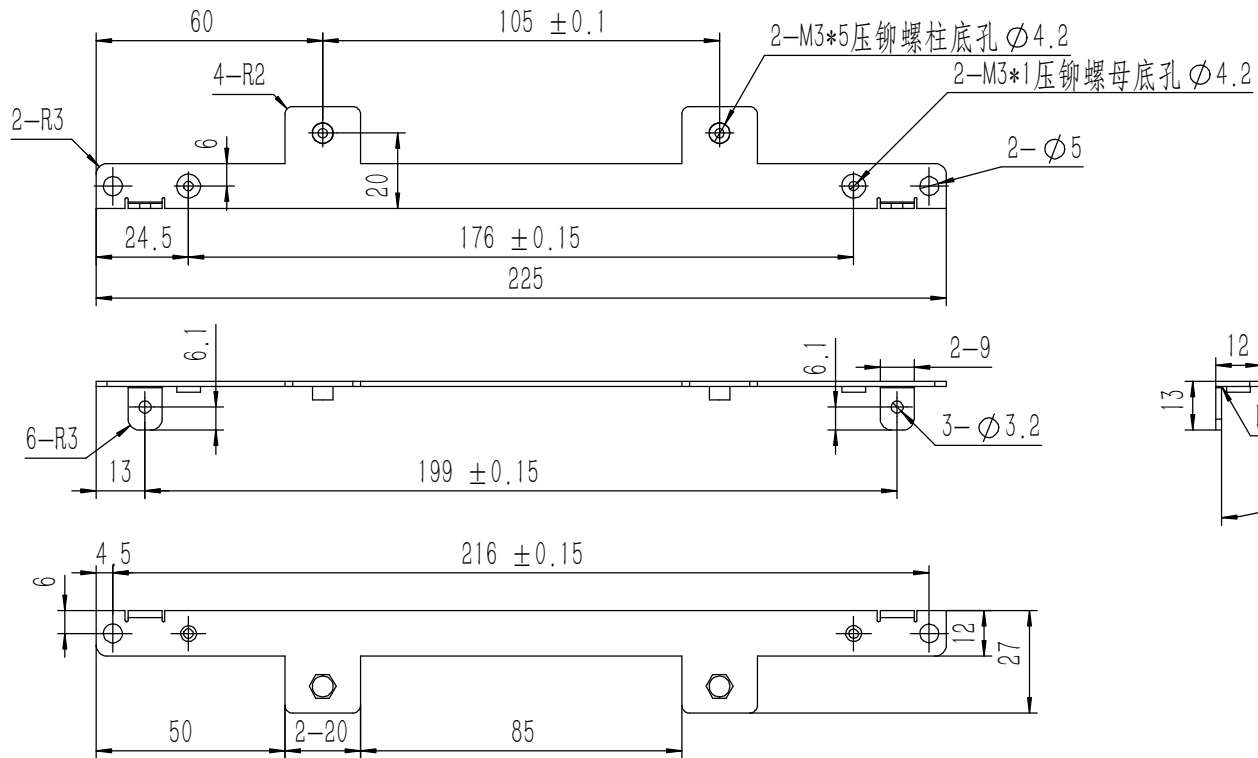
182.55

上 90° R 0.3

技术要求:

- 1、零件加工表面不应有划痕、擦伤等损伤零件表面的缺陷;
- 2、去除毛刺飞边, 锐角倒钝;
- 3、未标注尺寸见3D数模。

Tolerances (未注公差): 0.5 to 6 ± 0.1 6 to 30 ± 0.2 30 to 120 ± 0.3 120 to 400 ± 0.4	Material (材料): 电解板		
	Weight: (重量) (Kg) 0.045		
Break sharp edges (未注锐边倒角): Ch 0.05 to 0.25 x45°	Protection: (表面处理):	Part Name (零/部件名称): 侧板连接件 4U	
	Position tolerances (未注位置公差): ±0.05	Angular tolerances (未注角度公差): <6° ± 10' <30° ± 20' <120° ± 30' >120° ± 1°	Date (日期): 2020.05.19
	Part Name (零/部件名称): 侧板连接件 4U	Scale (图幅): A4	Sheet (页数): 1 / 1
	Drawn by (绘图): 莫永康	Signature by (批准):	Revision (版本): A1
	Check by (校对):	Date (日期):	Scale (比例): 1:1
	Signature by (批准):	Date (日期):	Revision (版本): A1

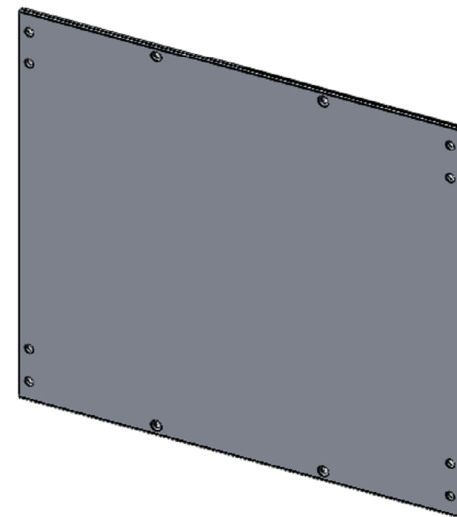
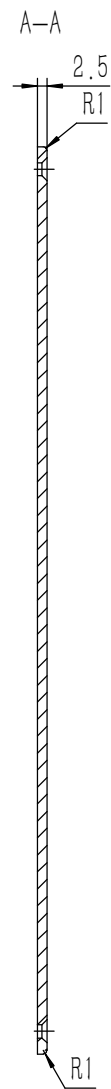
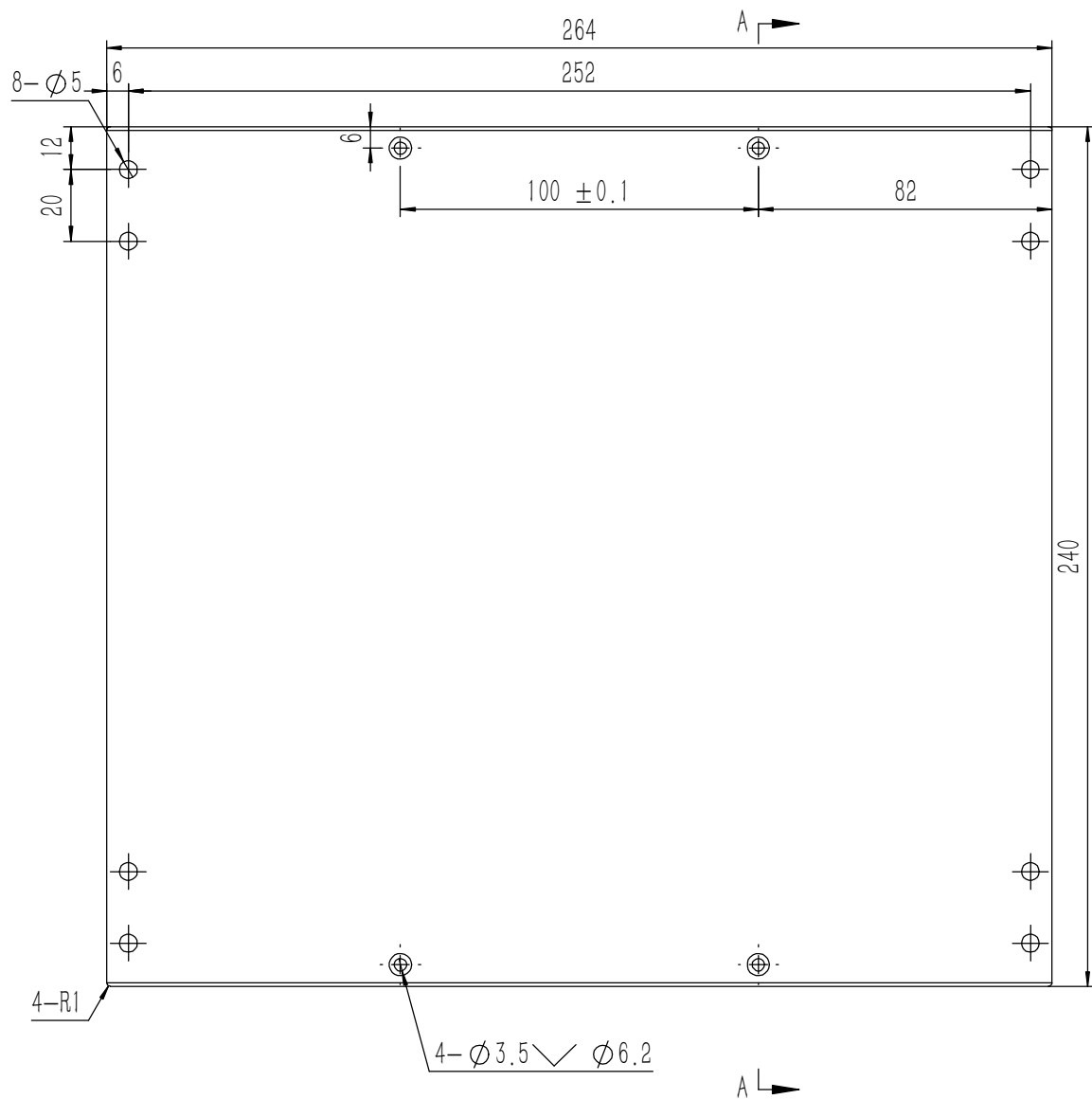


业务代码:

技术要求:

- 1、零件加工表面不应有划痕、擦伤等损伤零件表面的缺陷;
- 2、去除毛刺飞边, 锐角倒钝;
- 3、未标注尺寸见3D数模。

Tolerances (未注公差): 0.5 to 6 ± 0.1 6 to 30 ± 0.2 30 to 120 ± 0.3 120 to 400 ± 0.4	Material (材料): (装配图)	YONGU 永固	Drawing Number (图号): YG-TY-A11-001	
	Weight: (重量) (Kg): 0.041		Size: (图幅): A2	
Break sharp edges (未注锐边倒角): Ch 0.05 to 0.25 x45°	Protection: (表面处理): 毛坯	Part Name (零/部件名称): 面板下固定件1	Sheet (页数): 1 / 1	
	Angular tolerances (未注角度公差): <6° ± 10' <30° ± 20' <120° ± 30' >120° ± 1°		Position tolerances (未注位置公差): ±0.05	Revision (版本): A1
Drawn by (绘图): 许宏彬		Date (日期): 2020.09.18	Signature by (批准):	
Check by (校对):		Date (日期):	Date (日期):	

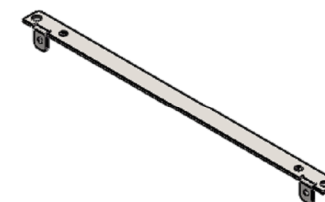
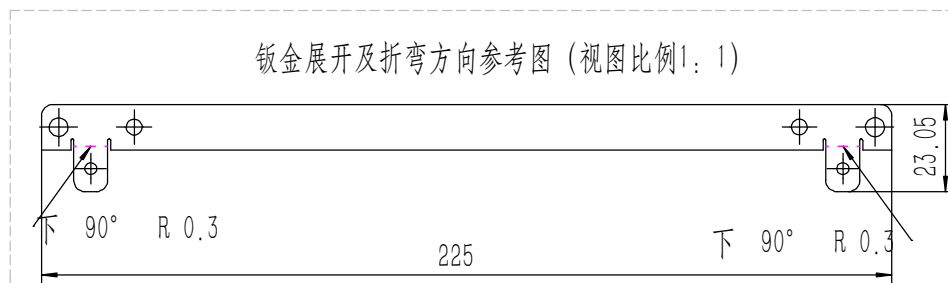
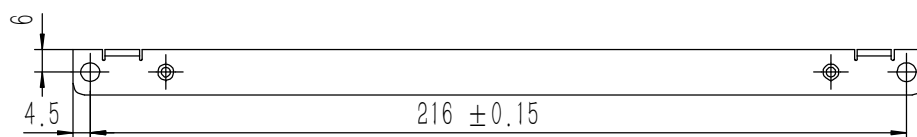
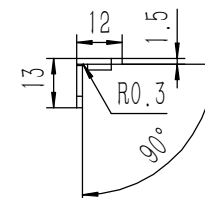
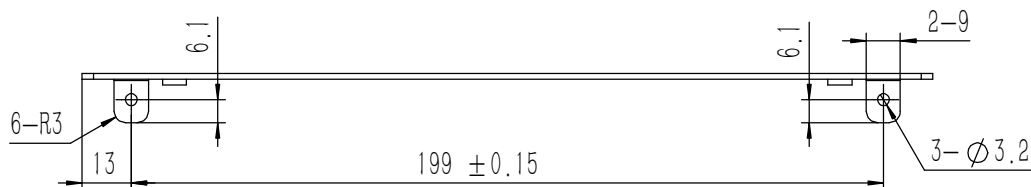
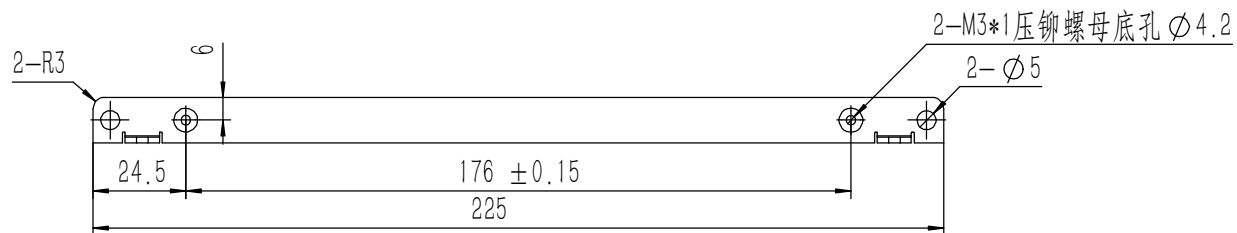


技术要求:

- 1、零件加工表面不应有划痕、擦伤等损伤零件表面的缺陷;
- 2、去除毛刺飞边,锐角倒钝;
- 3、未标注尺寸见3D数模。

Tolerances (未注公差):	Material (材料):	5052-H32	
	0.5 to 6 ± 0.1	Weight: (重量) (Kg):	0.423
6 to 30 ± 0.2	Protection: (表面处理):		
30 to 120 ± 0.3	Part Name (零/部件名称):	上下盖板	
120 to 400 ± 0.4	Part Name (零/部件名称):	上下盖板	
Break sharp edges (未注锐边倒角): Ch 0.05 to 0.25 x45°	Angular tolerances (未注角度公差):	Drawing Number (图号):	YG-TY-B01-002
Position tolerances (未注位置公差): ± 0.05	<6° $\pm 10'$ <30° $\pm 20'$ <120° $\pm 30'$ >120° $\pm 1^\circ$	Drawn by (绘图): 邓展锋	Date (日期): 2020.05.19
		Check by (校对):	Date (日期):
		Signature by (批准):	Date (日期):
		Size: (图幅): A2	Scale (比例): 1:1
		Revision (版本): A1	Sheet (页数): 1 / 1

YONGU 永固



业务代码:

技术要求:

- 1、零件加工表面不应有划痕、擦伤等损伤零件表面的缺陷;
- 2、去除毛刺飞边,锐角倒钝;
- 3、未标注尺寸见3D数模。

Tolerances (未注公差): 0.5 to 6 ± 0.1 6 to 30 ± 0.2 30 to 120 ± 0.3 120 to 400 ± 0.4	Material (材料):	电解板	
	Weight: (重量) (Kg):	0.033	
Break sharp edges (未注锐边倒角): Ch 0.05 to 0.25 x45° Position tolerances (未注位置公差): ±0.05	Protection: (表面处理):	毛坯	
	Angular tolerances (未注角度公差): <30° ± 10' <120° ± 30' >120° ± 1°	Part Name (零/部件名称):	面板上固定件1
	Drawing Number (图号):	YG-TY-A10-001	
	Drawn by (绘图):	许宏彬	Date (日期): 2020.09.18
	Check by (校对):		Date (日期):
	Signature by (批准):		Date (日期):
	Size: (图幅):	A2	
	Scale (比例):	1:1	
	Revision (版本):	A1	
	Sheet (页数):	1 / 1	

YONGU 永固