

5	DIN7985-1990-S-NL-M3X12	不锈钢球面圆柱头螺丝M3X12	SUS 304	8	0.001	
4	YG-M01A-0000-004	点胶密封圈	复合发泡胶	2	0.002	
3	YG-M01-0000-003	支脚	SUS 304	2	0.015	
2	YG-M01-0000-002	M01端盖	ADC12	2	0.060	
1	YG-M01-0000-001	壳体	6063-T5	1	0.151	
序号	图号	名称	材料	数量	单重	备注

- 技术要求:
- 1、必须按照设计、工艺要求及本规定和有关标准进行装配;
  - 2、所有零部件(包括外购、外协件)必须具有检验合格证方能进行装配;
  - 3、零件在装配前必须清理和清洗干净,不得有毛刺、飞边、氧化皮、锈蚀、切屑、砂粒、灰尘和油污等,并应符合相应清洁度要求;
  - 4、装配过程中零件不得磕碰、划伤和锈蚀;
  - 5、油漆未干的零件不得进行装配;
  - 6、相对运动的零件,装配时接触面间应加润滑油脂;
  - 7、各零、部件装配后相对位置应准确。

Break sharp edges (未注锐边倒角): Ch 0.05 to 0.25 x45°	Angular tolerances (未注角度公差): <6° ± 10' <30° ± 20' <120° ± 30' >120° ± 1°
Position tolerances (未注位置公差): ±0.05	

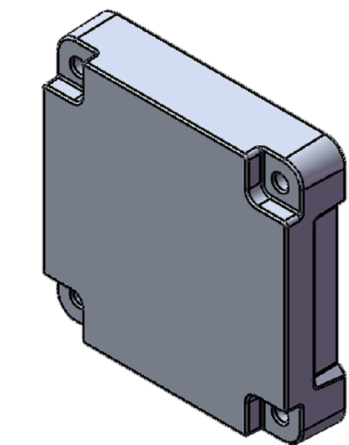
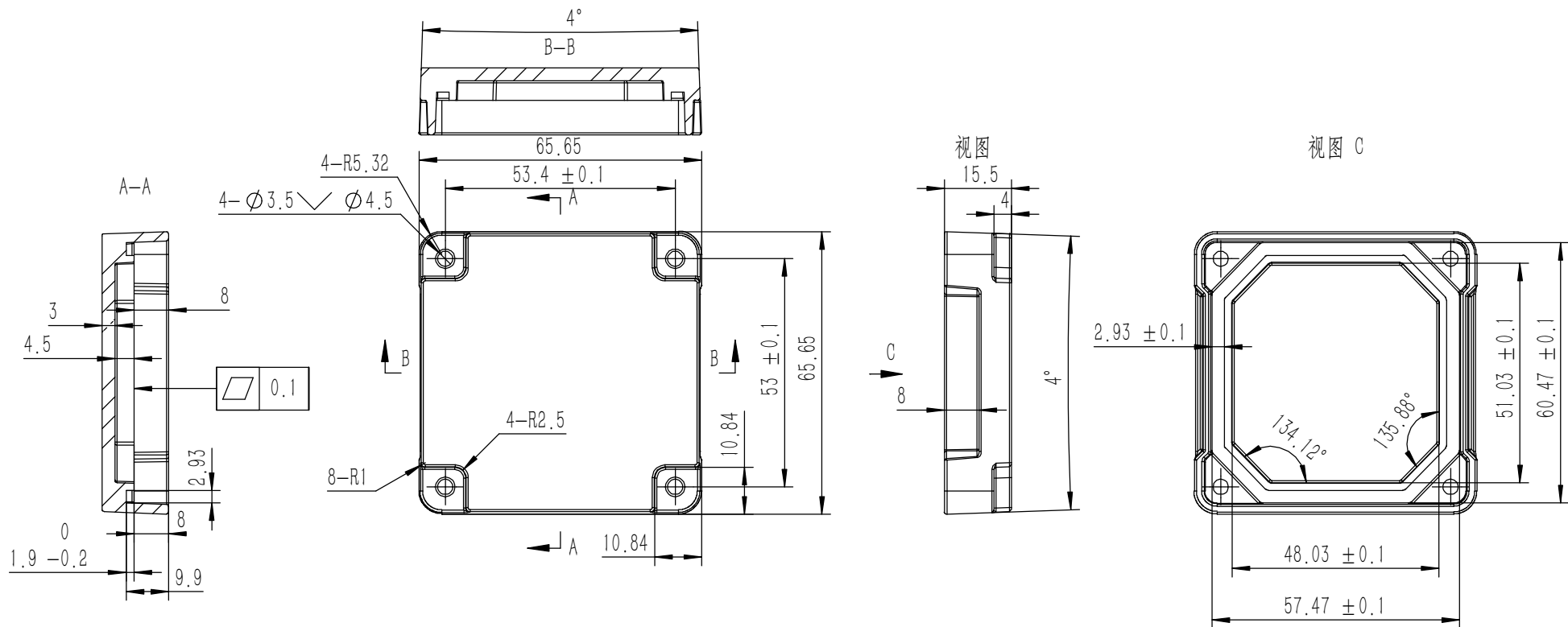
Tolerances (未注公差): 0.5 to 6 ± 0.1 6 to 30 ± 0.2 30 to 120 ± 0.3 120 to 400 ± 0.4	Material (材料): (装配图)
Weight: (重量) (Kg) 0.314	Protection: (表面处理):
Part Name (零/部件名称): M01防水壳体	Part Name (零/部件名称):
Drawn by (绘图): 陈家俊	Date (日期): 2018.11.15
Check by (校对):	Date (日期):
Signature by (批准):	Date (日期):

**YONGU** 永固

Drawing Number (图号): YG-M01-0000-000

Size (图幅): A3	Sheet (页数): 1 / 1
Scale (比例): 1:1	Revision (版本): A1



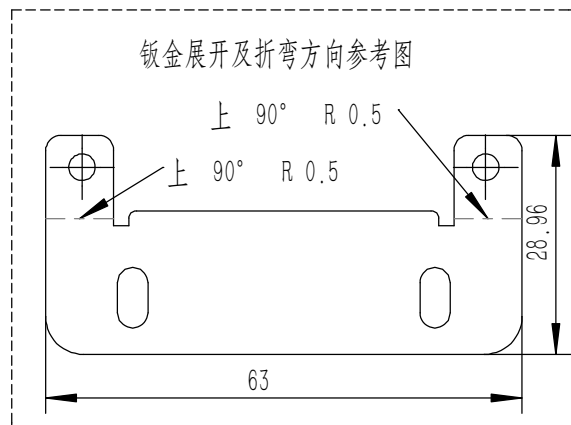
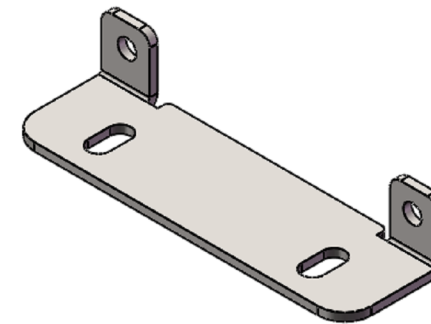
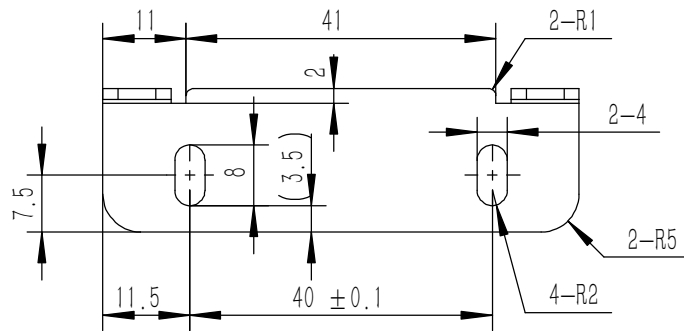
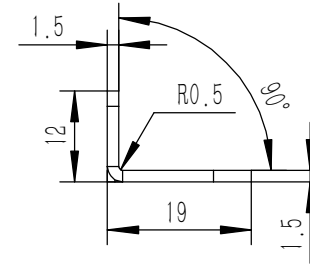
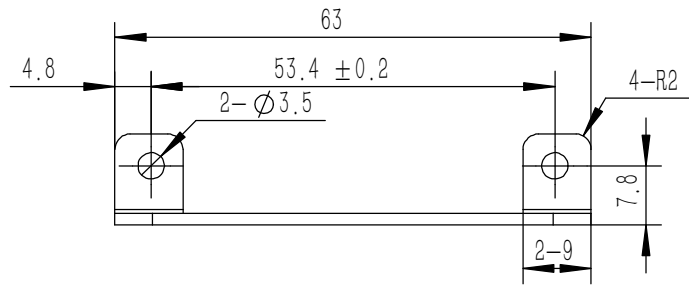


技术要求:

- 1、零件加工表面不应有划痕、擦伤等损伤零件表面的缺陷;
- 2、去除毛刺飞边,锐角倒钝;
- 3、未标注尺寸见3D数模。

Break sharp edges (未注锐边倒角): Ch 0.05 to 0.25 x45°	Angular tolerances (未注角度公差): <6° ± 10' <30° ± 20' <120° ± 30' >120° ± 1°
Position tolerances (未注位置公差): ±0.05	

Tolerances (未注公差): 0.5 to 6 ± 0.1 6 to 30 ± 0.2 30 to 120 ± 0.3 120 to 400 ± 0.4		Material (材料): ADC12	<b>YONGU</b> 永固	
Weight: (重量) (Kg) 0.060		Protection: (表面处理): 喷涂黑色		
Part Name (零/部件名称): M01端盖			Drawing Number (图号): YG-M01-0000-002	
Drawn by (绘图): 陈家俊	Date (日期): 2018.11.15	Size (图幅): A3		
Check by (校对):	Date (日期):	Scale (比例): 1:1		
Signature by (批准):	Date (日期):	Revision (版本): A1		
			Sheet (页数): 1 / 1	



技术要求:

- 1、零件加工表面不应有划痕、擦伤等损伤零件表面的缺陷;
- 2、去除毛刺飞边, 锐角倒钝;
- 3、未标注尺寸见3D数模。

Break sharp edges (未注锐边倒角): Ch 0.05 to 0.25 x45°	Angular tolerances (未注角度公差): <6° ± 10' <30° ± 20' <120° ± 30' >120° ± 1°
Position tolerances (未注位置公差): ±0.05	

Tolerances (未注公差):	
0.5 to 6 ± 0.1	
6 to 30 ± 0.2	
30 to 120 ± 0.3	
120 to 400 ± 0.4	

Material (材料):	SUS 304
Weight: (重量) (Kg)	0.015
Protection: (表面处理):	

Part Name (零/部件名称):	支脚
Drawn by (绘图): 陈家俊	Date (日期): 2018.11.15
Check by (校对):	Date (日期):
Signature by (批准):	Date (日期):

<b>YONGU</b> 永固	
Drawing Number (图号):	

YG-M01-0000-003	
Size: (图幅): A4	Sheet (页数):
Scale (比例): 1:1	Revision (版本): A1
1 / 1	