

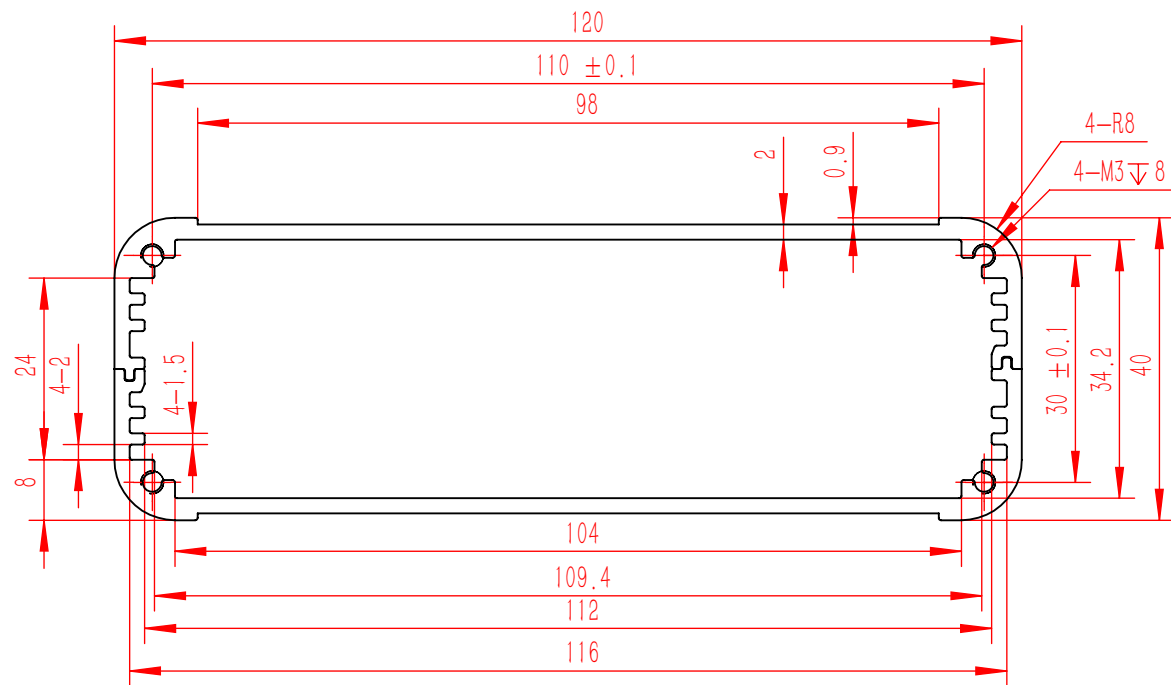
技术要求:


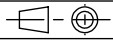
- 1、必须按照设计、工艺要求及本规定和有关标准进行装配;
- 2、所有零部件(包括外购、外协件)必须具有检验合格证方能进行装配;
- 3、零件在装配前必须清理和清洗干净,不得有毛刺、飞边、氧化皮、锈蚀、切屑、砂粒、灰尘和油污等,并应符合相应清洁度要求;
- 4、装配过程中零件不得磕碰、划伤和锈蚀;
- 5、油漆未干的零件不得进行装配;
- 6、相对运动的零件,装配时接触面间应加润滑油脂;
- 7、各零、部件装配后相对位置应准确。

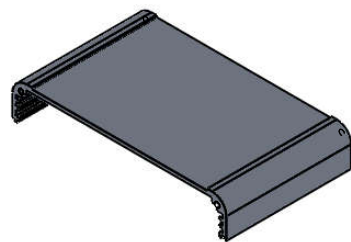
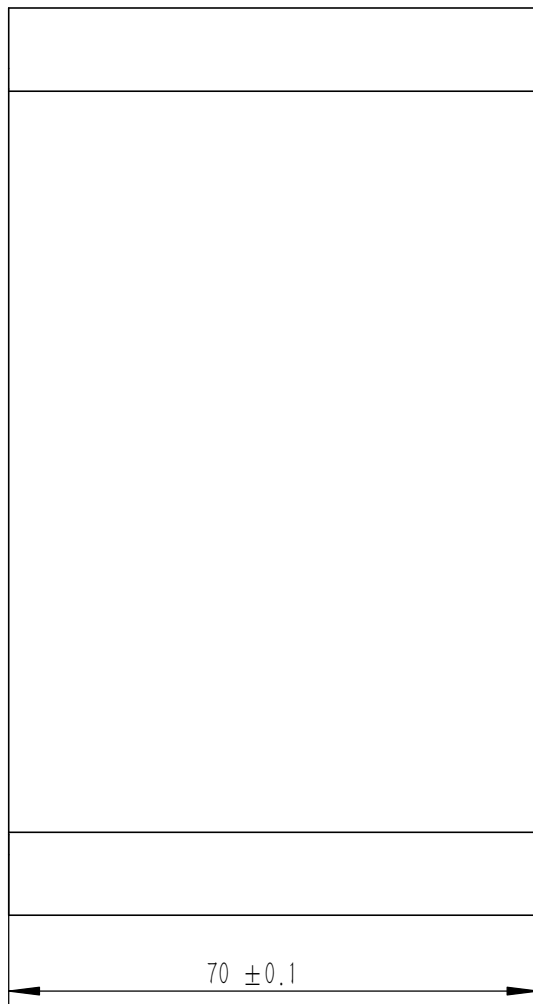
业务代码:

4	GB-T-70.1-2000-S-NL-M3X8	不锈钢内六角杯头螺丝M3X8	SUS 304	8	0.001	
3	YG-K17C01-0000-002	K17C红色塑料端盖	ABS	2	0.017	
2	YG-K17C-0000-003	挡板	5052-H32	2	0.018	
1	YG-K17C-0000-001	壳体	6063-T5	2	0.068	
序号 (Item)	图号 (Drawing Number)	名称 (Part Name)	材料 (Material)	数量 (QTY)	单重 (Weight)	备注 (Note)

Tolerances (未注公差):		Material (材料): (装配图)		YONGU 永固	
0.5 to 6 ± 0.1		Weight: (重量) (Kg): 0.214			
6 to 30 ± 0.2		Protection: (表面处理):		Drawing Number (图号): YG-K17C-0000-000	
30 to 120 ± 0.3		Part Name (零/部件名称): K17C壳体			
120 to 400 ± 0.4		Angular tolerances (未注角度公差):		Size: (图幅): A2	
Break sharp edges (未注锐边倒角): Ch 0.05 to 0.25 x45°	<6° ± 10'	Position tolerances (未注位置公差):		Scale (比例): 1:1	
<30° ± 20'	<120° ± 30'	Drawn by (绘图): 江瑞章		Date (日期): 2020.12.14	
<120° ± 30'	>120° ± 1°	Check by (校对):		Date (日期):	
±0.05		Signature by (批准):		Date (日期):	
				Revision (版本): A1	
				Sheet (页数): 1 / 1	



Tolerances (未注公差): 0.5 to 6 ± 0.1 6 to 30 ± 0.2 30 to 120 ± 0.3 120 to 400 ± 0.4	Material (材料): (装配图)	YONGU 		
	Weight: (重量) (Kg) 0.252			Protection: (表面处理):
Break sharp edges (未注锐边倒角): Ch 0.05 to 0.25 x45°	Part Name (零/部件名称): YG-K17截面图		Drawing Number (图号): YG-K17-JMT	
	Angular tolerances (未注角度公差): <6° ± 10' <30° ± 20' <120° ± 30' >120° ± 1°	Drawn by (绘图): 江瑞章	Date (日期): 2020.12.14	Size: (图幅): A4
Position tolerances (未注位置公差): ±0.05	Check by (校对):	Date (日期):	Scale (比例): 1:1	 Sheet (页数): 1 / 1
	Signature by (批准):	Date (日期):	Revision (版本): A1	

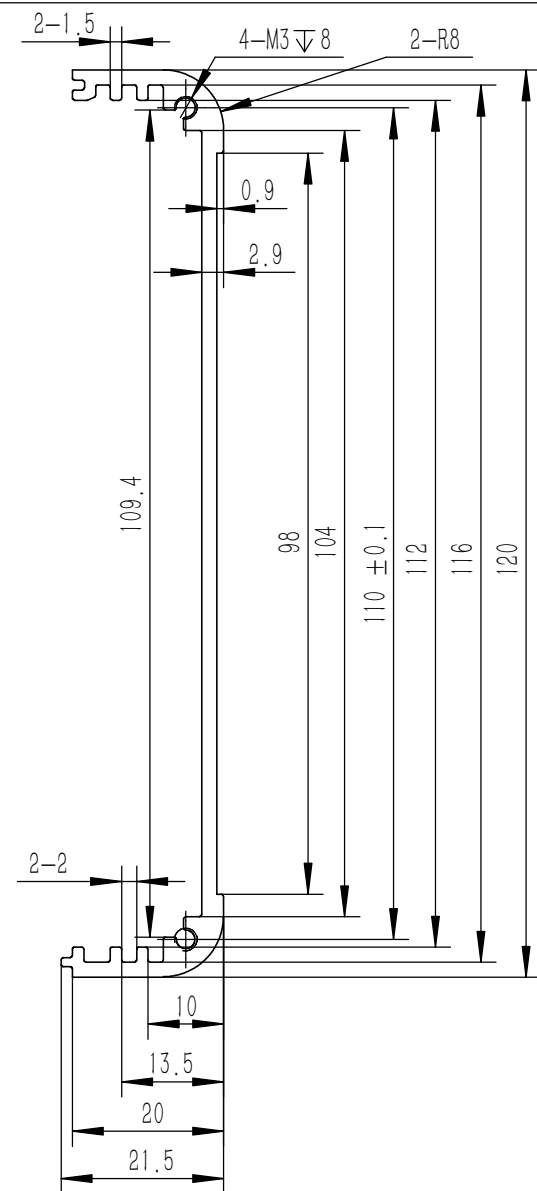


技术要求:

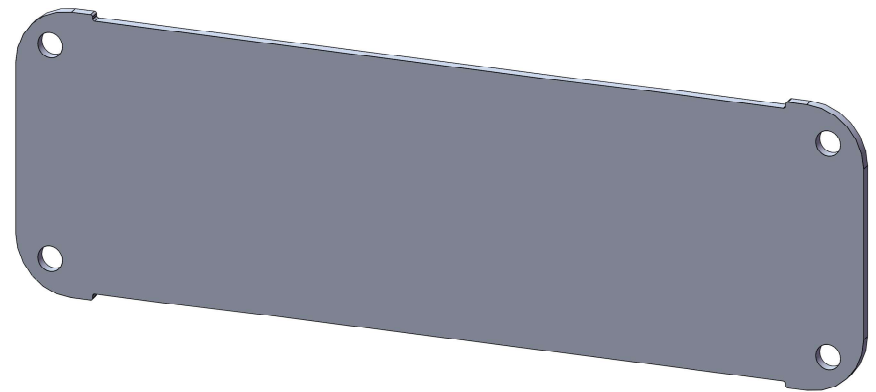
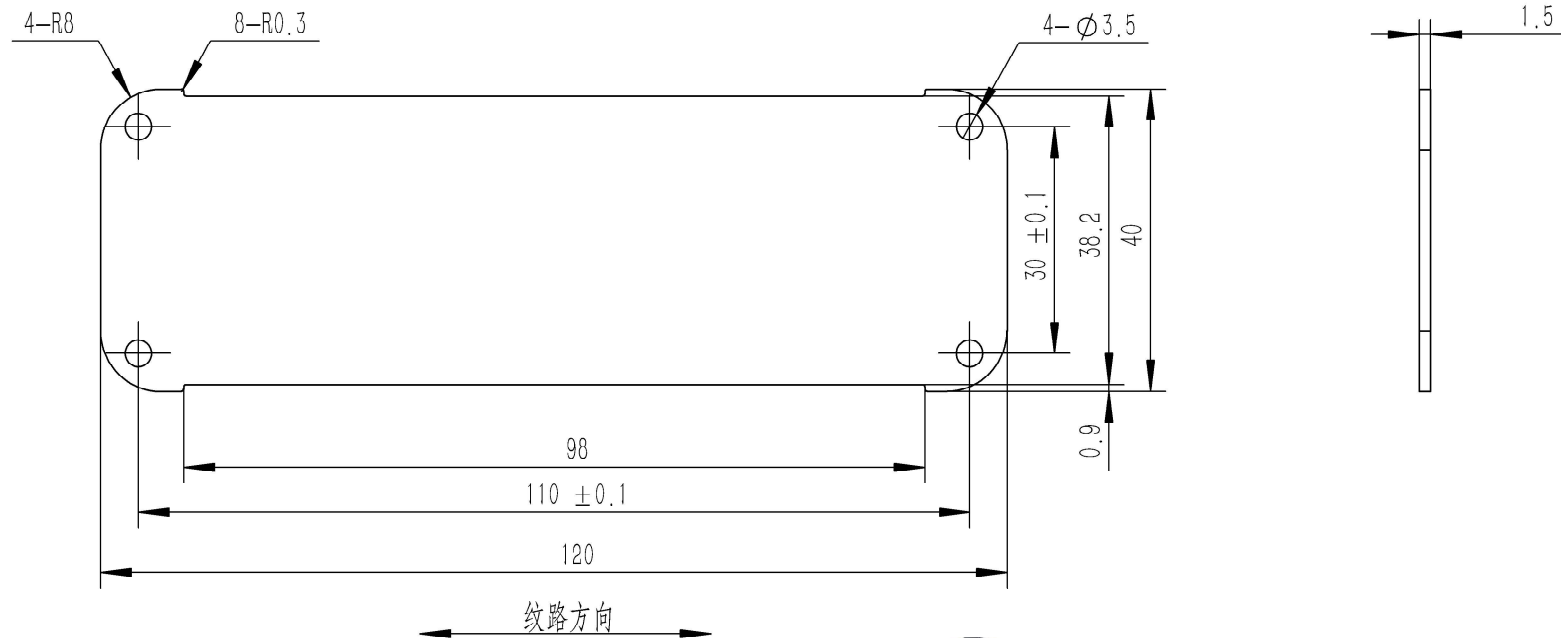
- 1、零件加工表面不应有划痕、擦伤等损伤零件表面的缺陷;
- 2、去除毛刺飞边, 锐角倒钝;
- 3、未标注尺寸见3D数模。

业务代码:

Break sharp edges (未注锐边倒角): Ch 0.05 to 0.25 x45°	Angular tolerances (未注角度公差): <6° ± 10' <30° ± 20' <120° ± 30' >120° ± 1°
Position tolerances (未注位置公差): ± 0.05	



Tolerances (未注公差): 0.5 to 6 ± 0.1 6 to 30 ± 0.2 30 to 120 ± 0.3 120 to 400 ± 0.4	Material (材料): 6063-T5	YONGU 永固	
Weight: (重量) (Kg) 0.068	Weight: (重量) (Kg) 0.068		
Protection: (表面处理):	Part Name (零/部件名称):	Drawing Number (图号):	
	壳体	YG-K17C-0000-001	
Drawn by (绘图): 江瑞章	Date (日期): 2020.12.14	Size: (图幅): A4	Sheet (页数):
Check by (校对):	Date (日期):	Scale (比例): 1:1	
Signature by (批准):	Date (日期):	Revision (版本): A1	1 / 1



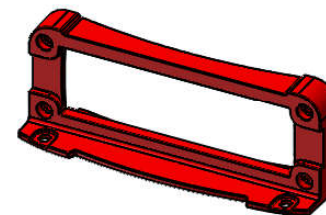
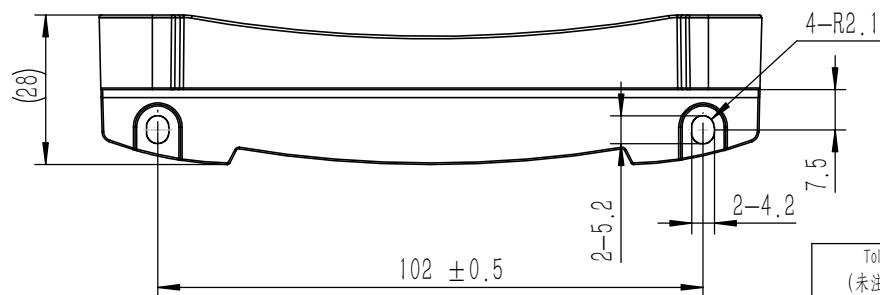
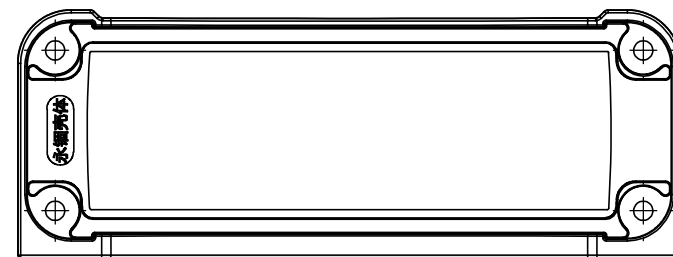
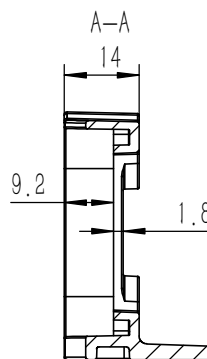
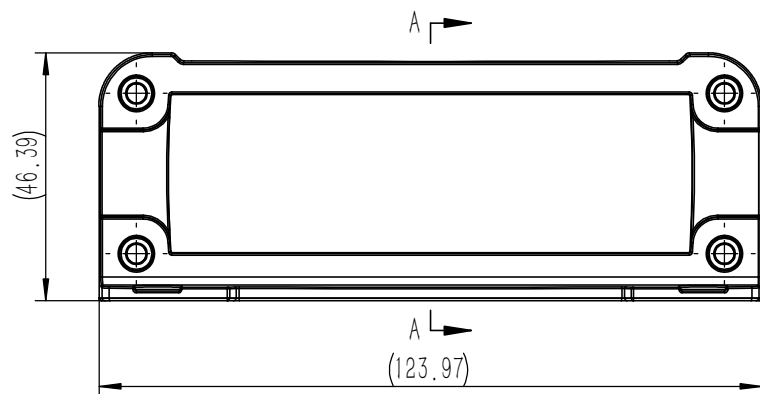
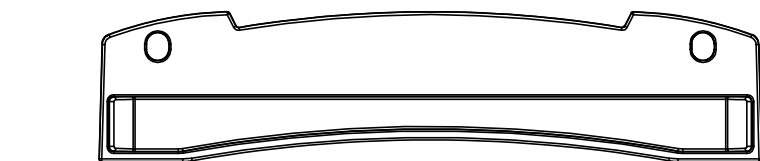
技术要求:

- 1、零件加工表面不应有划痕、擦伤等损伤零件表面的缺陷;
- 2、去除毛刺飞边, 锐角倒钝;
- 3、未标注尺寸见3D数模。

业务代码:

Break sharp edges (未注锐边倒角): Ch 0.05 to 0.25 x45°	Angular tolerances (未注角度公差): <6° ± 10' <30° ± 20' <120° ± 30' >120° ± 1°
Position tolerances (未注位置公差): ±0.05	

Tolerances (未注公差): 0.5 to 6 ± 0.1 6 to 30 ± 0.2 30 to 120 ± 0.3 120 to 400 ± 0.4	Material (材料): 5052-H32	YONGU 永固	
	Weight: (重量) (Kg) 0.018		
Protection: (表面处理):	Part Name (零/部件名称): 挡板		Drawing Number (图号): YG-K17C-0000-003
Drawn by (绘图): 江瑞章	Date (日期): 2020.12.14	Size: (图幅): A4	Sheet (页数): 1 / 1
Check by (校对):	Date (日期):	Scale (比例): 1:1	
Signature by (批准):	Date (日期):	Revision (版本): A1	



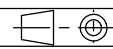
技术要求:

- 1、零件表面不允许有收缩、凹陷、熔接痕、水纹、顶白及飞边等缺陷
- 2、未标注尺寸见3D数模。

业务代码:

Break sharp edges (未注锐边倒角): Ch 0.05 to 0.25 x45°	Angular tolerances (未注角度公差): <6° ± 10' <30° ± 20' <120° ± 30' >120° ± 1°
Position tolerances (未注位置公差): ±0.05	

Tolerances (未注公差): 0.5 to 6 ± 0.1 6 to 30 ± 0.2 30 to 120 ± 0.3 120 to 400 ± 0.4	Material (材料): ABS	YONGU 永固
	Weight: (重量) (Kg) 0.017	
Protection: (表面处理): 喷橡胶漆	Part Name (零/部件名称): K17C红色塑料端盖	Drawing Number (图号): YG-K17C01-0000-002
Drawn by (绘图): 江瑞章	Date (日期): 2020.12.14	Size (图幅): A3
Check by (校对):	Date (日期):	Scale (比例): 1:1
Signature by (批准):	Date (日期):	Revision (版本): A1



Sheet (页数):

1 / 1