

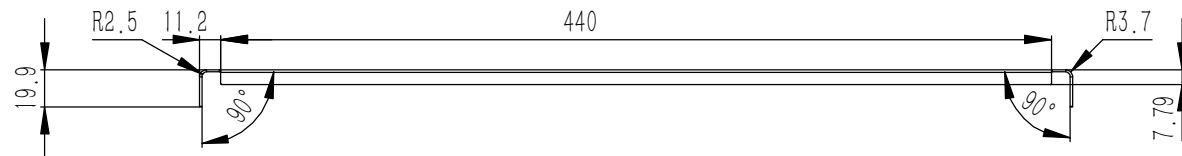
25	YG-D08-0000-005	组合侧板	6063-T5	2	0.091	
24	YG-TY-ZSJ-001	螺丝装饰件 M3	5052-H32	8	0.000	
23	YG-D08-0000-006	组合侧板	6063-T5	4	0.223	
22	YG-TY-LMT-002	塑料螺母套 M3	ABS	16	0.0001	
21	YG-D08-0000-007	组合侧板	6063-T5	2	0.107	
20	GB-T-973-1976-C-NI-M3X14	碳钢镀锌十字大扁头螺丝M3X14	普通碳钢	8	0.001	
19	GB-T-819.1-2000-C-NI-M3X6	碳钢镀锌十字沉头螺丝M3X6	普通碳钢	28	0.0004	
18	YG-D08-0000-004	D安装垫板	电解板	1	1.509	
17	YG-D08-0000-001	前后面板	5052-H32	2	0.774	
16	YG-D08-0000-008	D拉手	6063-T5	2	0.124	
15	GB-T-70.1-2000-S-NL-M3X8	不锈钢内六角杯头螺丝M3X8	SUS 304	24	0.001	
14	GB-T-70.3-2000-C-NI-M3X8	芳生镀白镍内六角沉头螺丝M3X8	普通碳钢	8	0.0004	
13	GB-T-39-1988-C-ZI-M3	方螺母镀白锌M3	普通碳钢	16	0.0004	
12	YG-D08-0000-009	D后防护	6063-T5	2	0.076	
11	S-M3-1-ZI	压铆螺母镀白锌M3X1	普通碳钢	8	0.3750	
10	YG-TY-JJ-003	D后机脚	6063-T5	2	0.028	
9	YG-D08-0000-011	D中间横梁	6063-T5	1	0.175	
8	YG-D08-0000-003	下盖板	5052-H32	1	0.618	
7	YG-TY-JJ-002	D活动机脚	6063-T5	2	0.017	
6	YG-TY-GZ-001	钢珠 D4.7	普通碳钢	2	0.0004	
5	YG-TY-JJ-001	D前机脚座	6063-T5	2	0.023	
4	YG-TY-TH-001	弹簧 0.6X4X20	普通碳钢	2	0.000	
3	GB-T-80-2007-S-NL-M6X10	不锈钢内六角凹端紧定螺钉M6X10	普通碳钢	2	0.0019	
2	YG-D08-0000-010	D前后横梁	6063-T5	4	0.284	
1	YG-D08-0000-002	上盖板	5052-H32	1	0.618	
序号	图号	名称	材料	数量	单重	备注

技术要求:

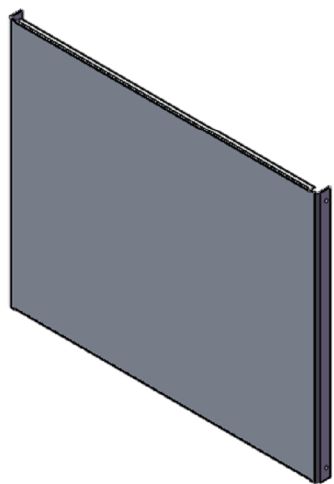
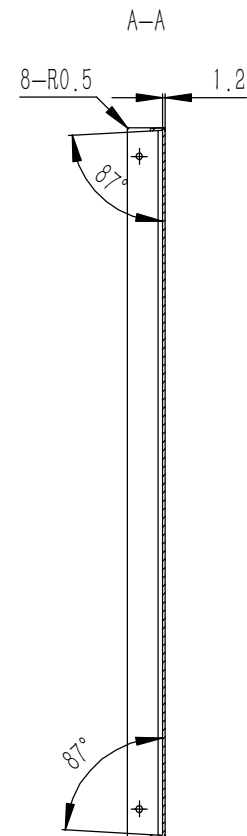
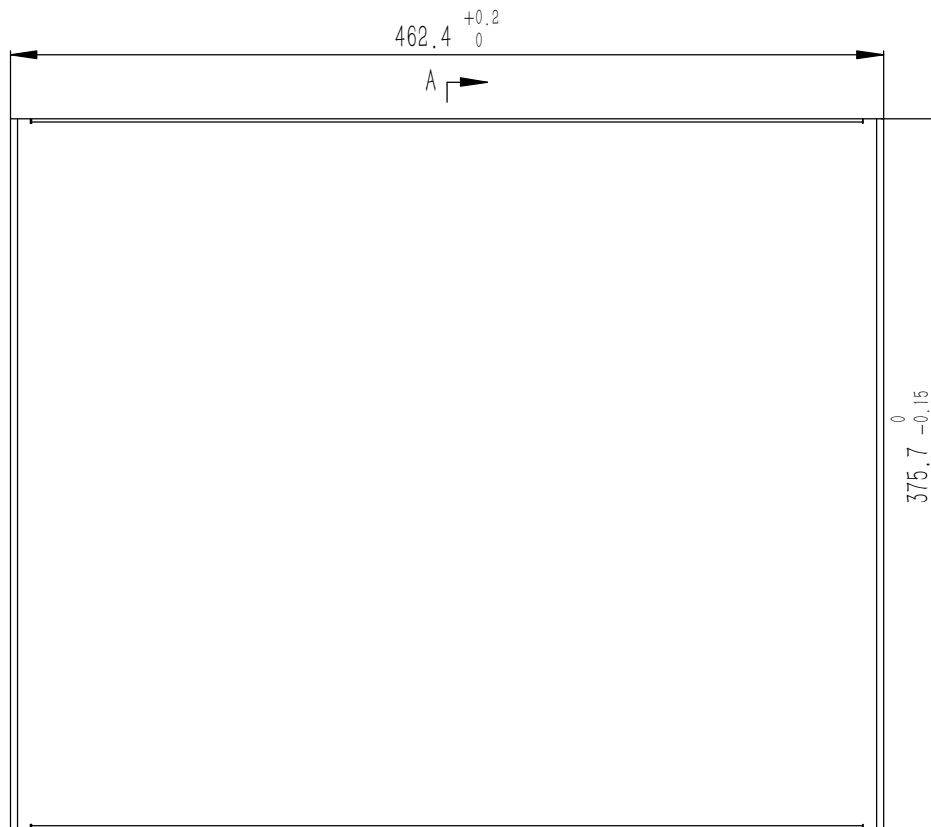
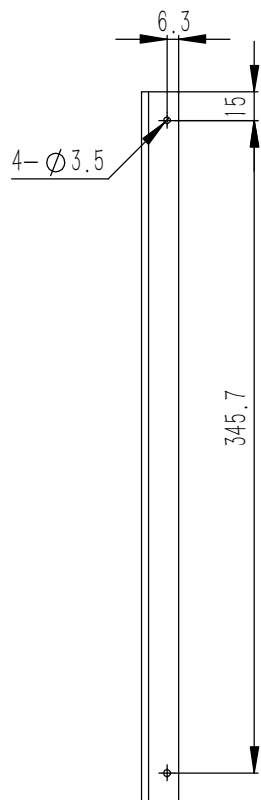
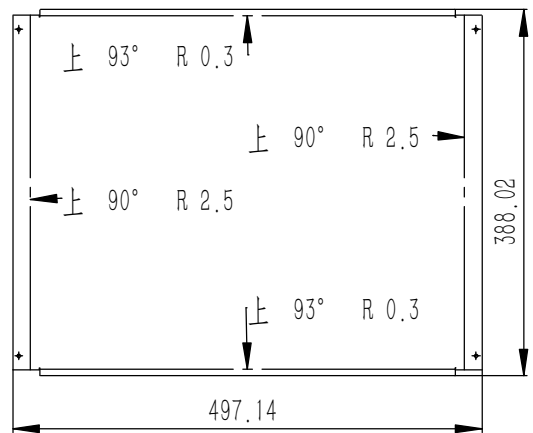
- 1、必须按照设计、工艺要求及本规定和有关标准进行装配;
- 2、所有零部件(包括外购、外协件)必须具有检验合格证方能进行装配;
- 3、零件在装配前必须清理和清洗干净,不得有毛刺、飞边、氧化皮、锈蚀、切屑、砂粒、灰尘和油污等,并应符合相应清洁度要求;
- 4、装配过程中零件不得磕碰、划伤和锈蚀;
- 5、油漆未干的零件不得进行装配;
- 6、相对运动的零件,装配时接触面间应加润滑油脂;
- 7、各零、部件装配后相对位置应准确。

Break sharp edges (未注锐边倒角): Ch 0.05 to 0.25 x45°	Angular tolerances (未注角度公差): <6° ± 10' <30° ± 20' <120° ± 30' >120° ± 1°
Position tolerances (未注位置公差): ± 0.05	

Tolerances (未注公差): 0.5 to 6 ± 0.1 6 to 30 ± 0.2 30 to 120 ± 0.3 120 to 400 ± 0.4		Material (材料): (装配图)	YONGU 永固
		Weight: (重量) (Kg): 7.492	
		Protection: (表面处理):	
Part Name (零/部件名称):		D08机箱	Drawing Number (图号): YG-D08-0000-000
Drawn by (绘图): 莫永康		Date (日期): 2020.05.23	Size (图幅): A0
Check by (校对):		Date (日期):	Scale (比例): 1:1.5
Signature by (批准):		Date (日期):	Revision (版本): A1
			Sheet (页数): 1 / 1



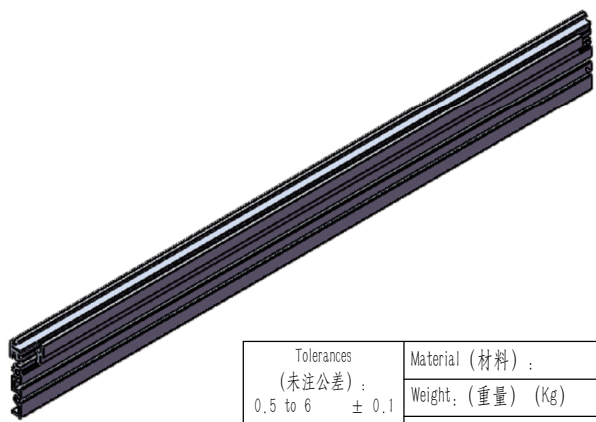
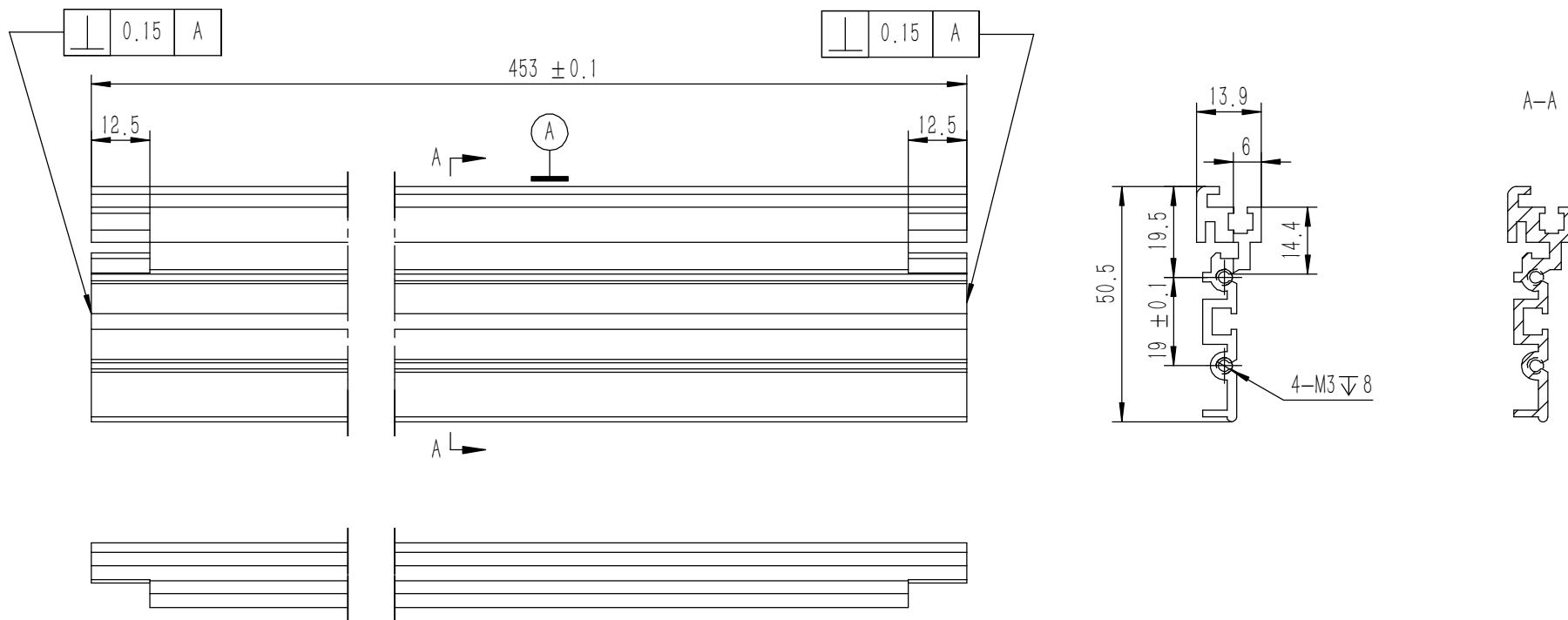
钣金展开及折弯方向参考图 (比例1:2)



- 技术要求:
- 1、零件加工表面不应有划痕、擦伤等损伤零件表面的缺陷;
 - 2、去除毛刺飞边, 锐角倒钝;
 - 3、未标注尺寸见3D数模。

Break sharp edges (未注锐边倒角): Ch 0.05 to 0.25 x45°	Angular tolerances (未注角度公差): <6° ± 10' <30° ± 20' <120° ± 30' >120° ± 1°
Position tolerances (未注位置公差): ± 0.05	

Tolerances (未注公差): 0.5 to 6 ± 0.1 6 to 30 ± 0.2 30 to 120 ± 0.3 120 to 400 ± 0.4	Material (材料): 5052-H32	YONGU 永固
Weight: (重量) (Kg): 0.618	Weight: (重量) (Kg): 0.618	
Protection: (表面处理):	Protection: (表面处理):	
Part Name (零/部件名称):	Part Name (零/部件名称): 上盖板	Drawing Number (图号): YG-D08-0000-002
Drawn by (绘图): 莫永康	Date (日期): 2020.05.22	Size (图幅): A0
Check by (校对):	Date (日期):	Scale (比例): 1:1
Signature by (批准):	Date (日期):	Revision (版本): A1
		Sheet (页数): 1 / 1

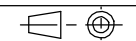


技术要求:

- 1、零件加工表面不应有划痕、擦伤等损伤零件表面的缺陷;
- 2、去除毛刺飞边, 锐角倒钝;
- 3、未标注尺寸见3D数模。

Tolerances (未注公差): 0.5 to 6 ± 0.1 6 to 30 ± 0.2 30 to 120 ± 0.3 120 to 400 ± 0.4	Material (材料):	6063-T5	
	Weight: (重量) (Kg)	0.284	
Break sharp edges (未注锐边倒角): Ch 0.05 to 0.25 x45°	Protection: (表面处理):		
	Part Name (零/部件名称):	D前后横梁	
Angular tolerances (未注角度公差): <6° ± 10' <30° ± 20' <120° ± 30' >120° ± 1°	Position tolerances (未注位置公差): ±0.05	Part Name (零/部件名称):	D前后横梁
		Drawing Number (图号):	YG-D08-0000-010
	Drawn by (绘图): 邓展锋	Date (日期): 2020.05.22	Size (图幅): A3
	Check by (校对):	Date (日期):	Scale (比例): 1:1
	Signature by (批准):	Date (日期):	Revision (版本):

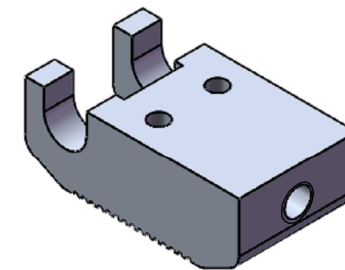
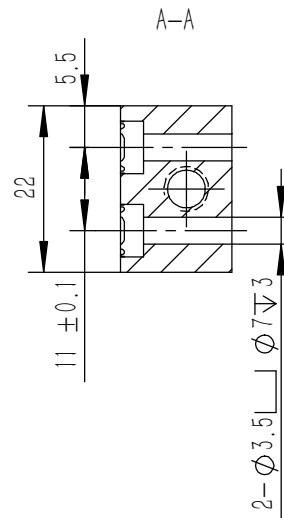
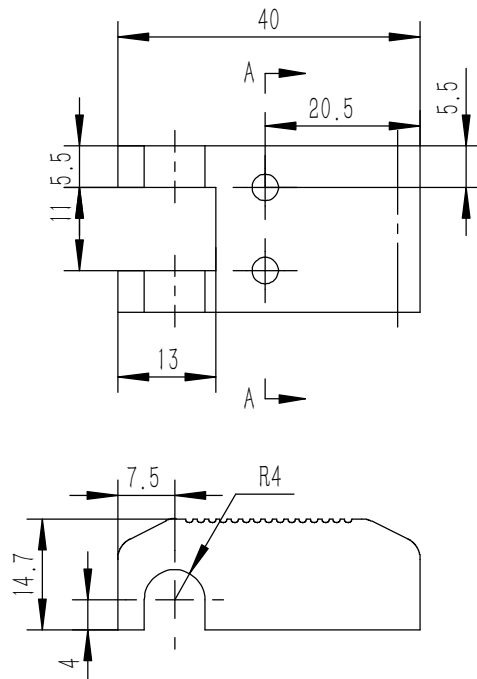
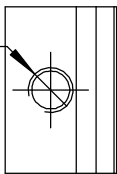
YONGU 永固



Sheet (页数):

1 / 1

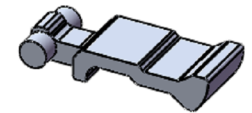
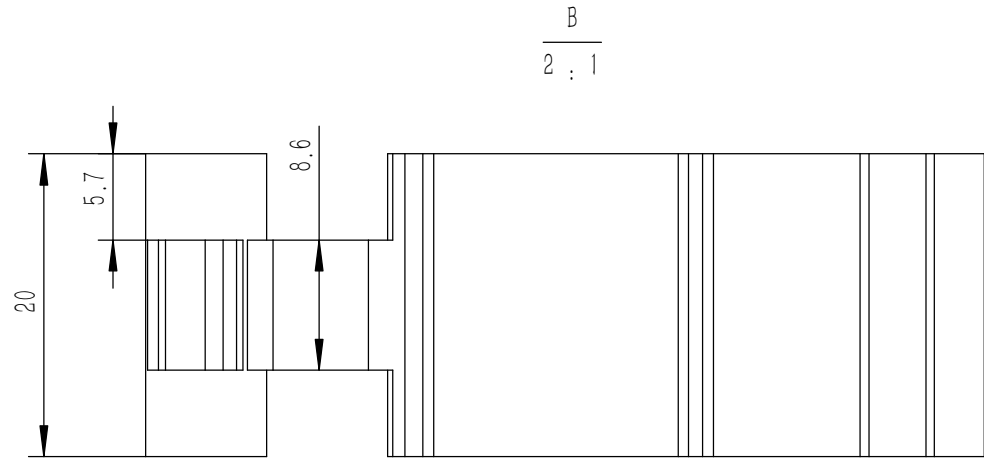
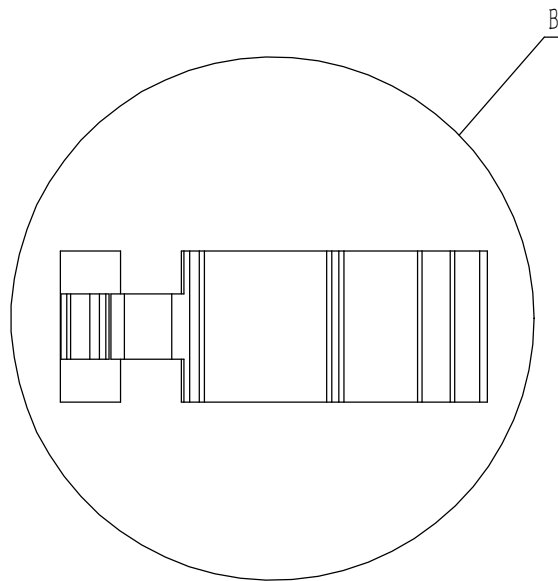
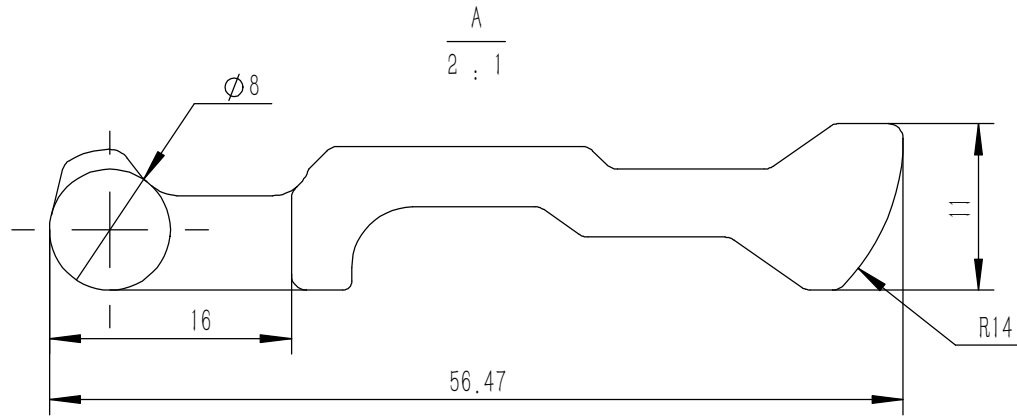
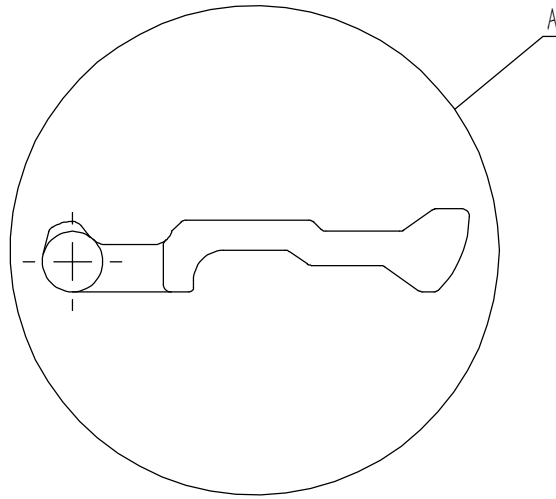
M6 12底孔 $\phi 5$ 贯穿



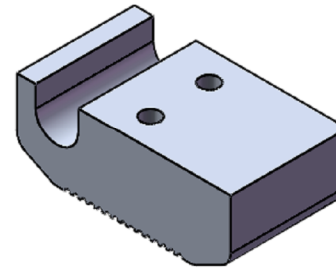
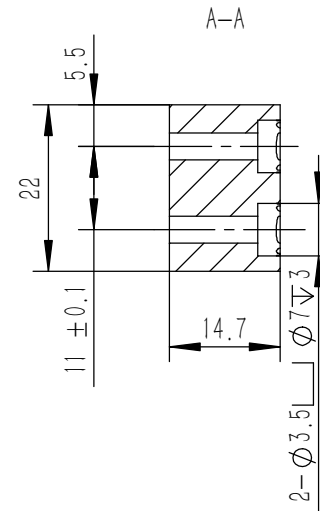
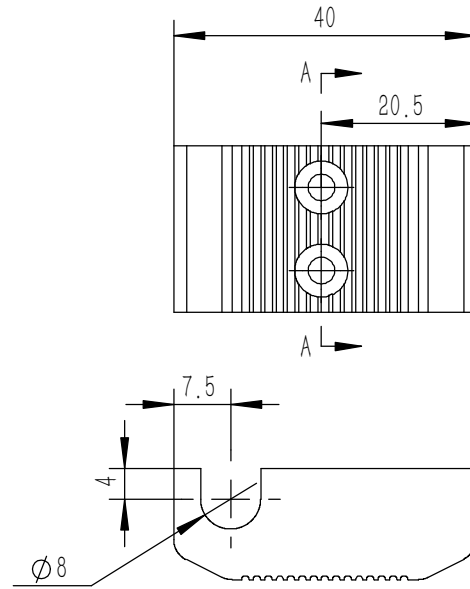
技术要求:

- 1、零件加工表面不应有划痕、擦伤等损伤零件表面的缺陷;
- 2、去除毛刺飞边, 锐角倒钝;
- 3、未标注尺寸见3D数模。

Tolerances (未注公差): 0.5 to 6 ± 0.1 6 to 30 ± 0.2 30 to 120 ± 0.3 120 to 400 ± 0.4	Material (材料): 6063-T5	YONGU 永固		
	Weight: (重量) (Kg) 0.023			
Break sharp edges (未注锐边倒角): Ch 0.05 to 0.25 x45°	Protection: (表面处理):	Part Name (零/部件名称): D前机脚座		
	Position tolerances (未注位置公差): ± 0.05	Angular tolerances (未注角度公差): <6° ± 10' <30° ± 20' <120° ± 30' >120° ± 1°	Drawing Number (图号): YG-TY-JJ-001	
Drawn by (绘图): 邓展锋		Date (日期): 2020.05.22	Size: (图幅): A4	Sheet (页数): 1 / 1
Check by (校对):		Date (日期):	Scale (比例): 1:1	
Signature by (批准):		Date (日期):	Revision (版本):	




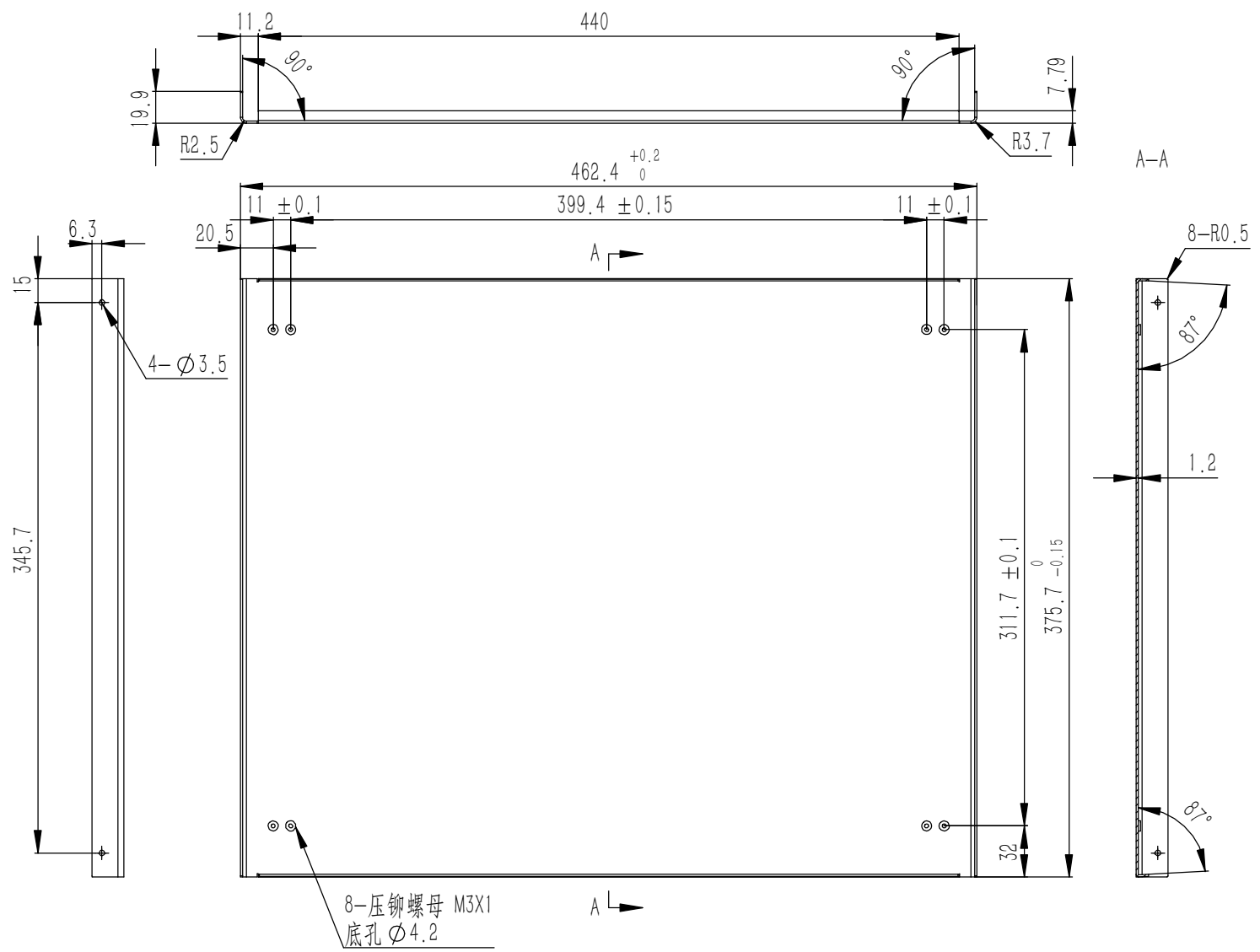
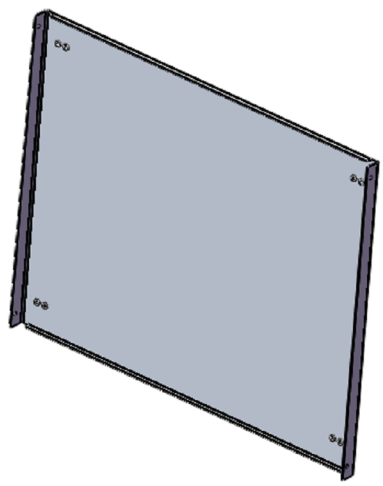
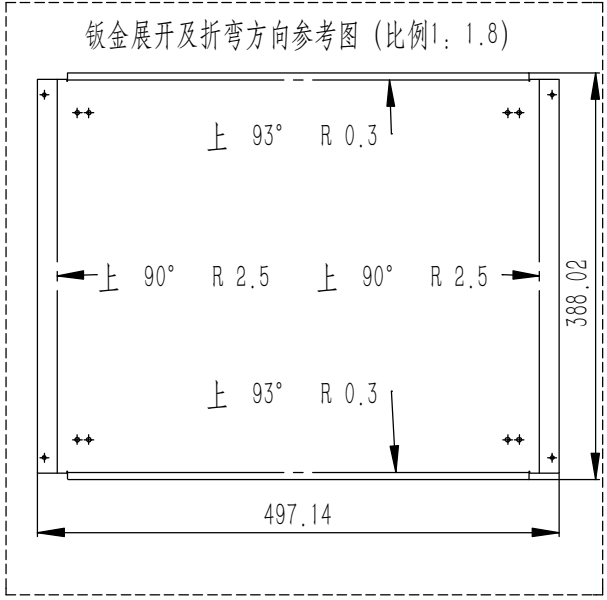
Tolerances (未注公差): 0.5 to 6 ± 0.1 6 to 30 ± 0.2 30 to 120 ± 0.3 120 to 400 ± 0.4	Material (材料): 6063-T5	YONGU 永固	
	Weight: (重量) (Kg) 0.017		
Break sharp edges (未注锐边倒角): Ch 0.05 to 0.25 x45°	Part Name (零/部件名称): D活动机脚		Drawing Number (图号): YG-TY-JJ-002
	Position tolerances (未注位置公差): ±0.05	Angular tolerances (未注角度公差): <math><6^\circ</math> ± 10' <math><30^\circ</math> ± 20' <math><120^\circ</math> ± 30' >120° ± 1°	Drawn by (绘图): 邓展锋 Date (日期): 2020.05.22
	Check by (校对): Signature by (批准):	Date (日期): Date (日期):	Revision (版本): 1 / 1



技术要求:

- 1、零件加工表面不应有划痕、擦伤等损伤零件表面的缺陷;
- 2、去除毛刺飞边, 锐角倒钝;
- 3、未标注尺寸见3D数模。

Tolerances (未注公差): 0.5 to 6 ± 0.1 6 to 30 ± 0.2 30 to 120 ± 0.3 120 to 400 ± 0.4	Material (材料):	6063-T5		YONGU 
	Weight: (重量) (Kg)	0.028		
Break sharp edges (未注锐边倒角): Ch 0.05 to 0.25 x45°	Protection: (表面处理):			Drawing Number (图号): YG-TY-JJ-003
	Position tolerances (未注位置公差): ±0.05	Part Name (零/部件名称):	D后机脚	
Angular tolerances (未注角度公差): <6° ± 10' <30° ± 20' <120° ± 30' >120° ± 1°	Drawn by (绘图):	邓展锋	Date (日期):	2020.05.22
	Check by (校对):		Date (日期):	
	Signature by (批准):		Date (日期):	
		Scale (比例):	1:1	
		Revision (版本):	1 / 1	

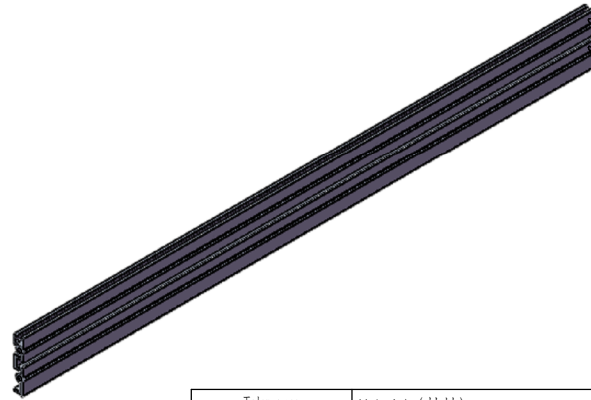
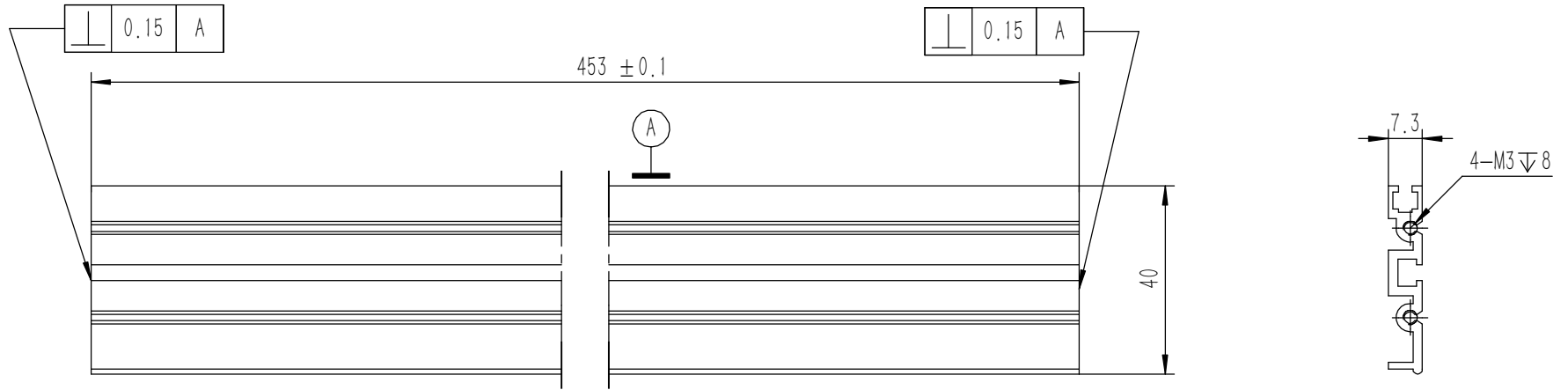


技术要求:
 1、零件加工表面不应有划痕、擦伤等损伤零件表面的缺陷;
 2、去除毛刺飞边,锐角倒钝;
 3、未标注尺寸见3D数模。

Break sharp edges (未注锐边倒角): Ch 0.05 to 0.25 x45°	Angular tolerances (未注角度公差): <6° ± 10' <30° ± 20' <120° ± 30' >120° ± 1°
Position tolerances (未注位置公差): ±0.05	

Tolerances (未注公差): 0.5 to 6 ± 0.1 6 to 30 ± 0.2 30 to 120 ± 0.3 120 to 400 ± 0.4	Material (材料): 5052-H32
	Weight: (重量) (Kg): 0.621
	Protection: (表面处理):
	Part Name (零/部件名称): 下盖板
Drawn by (绘图): 莫永康	Date (日期): 2020.05.22
Check by (校对):	Date (日期):
Signature by (批准):	Date (日期):

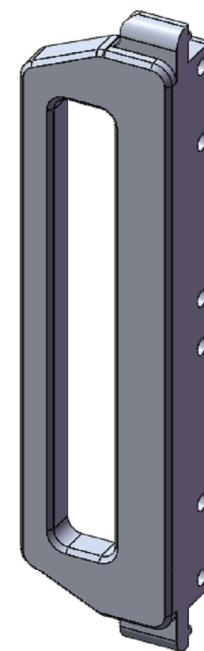
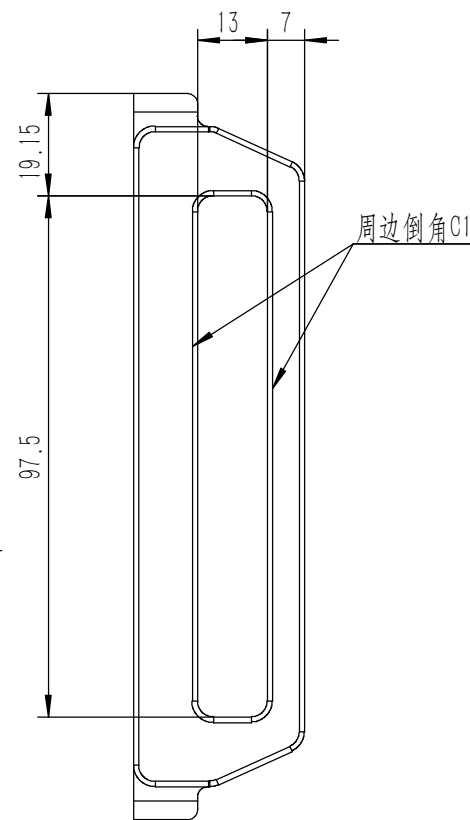
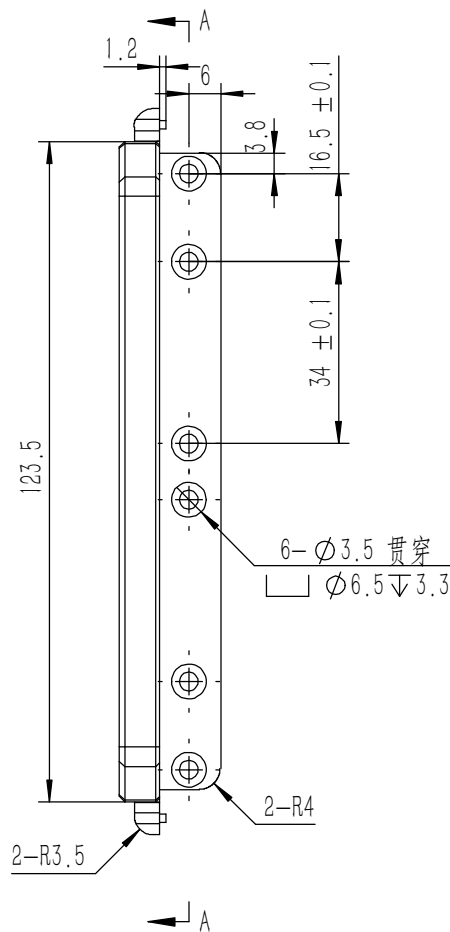
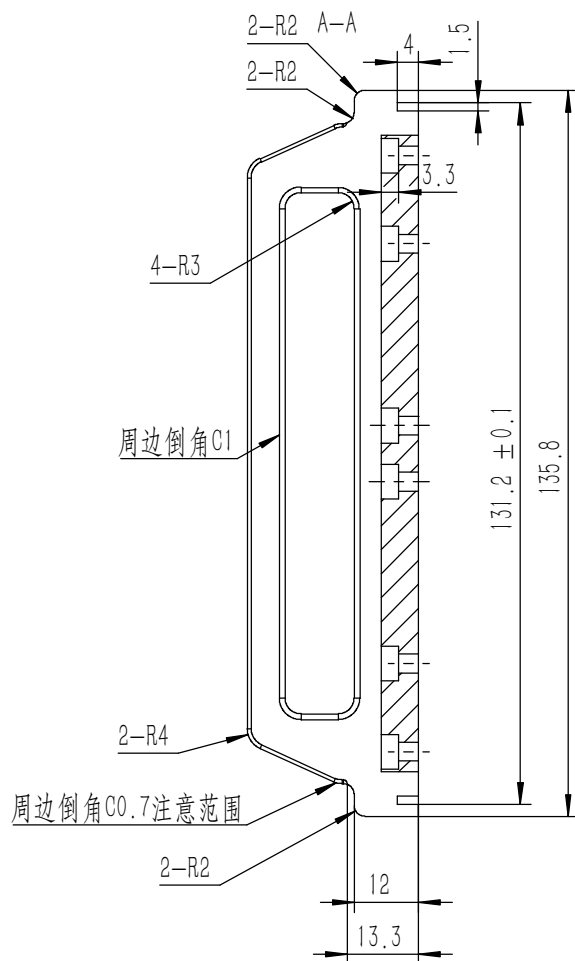
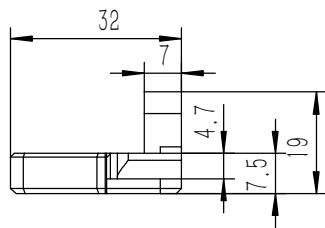
		Drawing Number (图号): YG-D08-0000-003	
		Size (图幅): A0	Sheet (页数): 1 / 1
Scale (比例): 1:1	Revision (版本): A1		



技术要求:

- 1、零件加工表面不应有划痕、擦伤等损伤零件表面的缺陷;
- 2、去除毛刺飞边, 锐角倒钝;
- 3、未标注尺寸见3D数模。

Tolerances (未注公差): 0.5 to 6 ± 0.1 6 to 30 ± 0.2 30 to 120 ± 0.3 120 to 400 ± 0.4	Material (材料):	6063-T5		YONGU 永固
	Weight: (重量) (Kg)	0.175		
Break sharp edges (未注锐边倒角): Ch 0.05 to 0.25 x45°	Protection: (表面处理):			Drawing Number (图号): YG-D08-0000-011
	Part Name (零/部件名称):	D中间横梁		
Angular tolerances (未注角度公差): <6° ± 10' <30° ± 20' <120° ± 30' >120° ± 1°	Position tolerances (未注位置公差): ±0.05	Drawn by (绘图): 邓展锋	Date (日期): 2020.05.22	Size (图幅): A3
		Check by (校对):	Date (日期):	Scale (比例): 1:1
		Signature by (批准):	Date (日期):	Revision (版本):
				Sheet (页数): 1 / 1

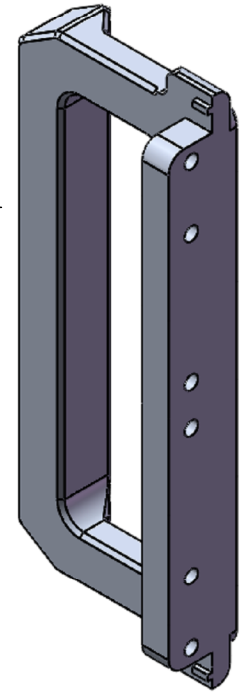
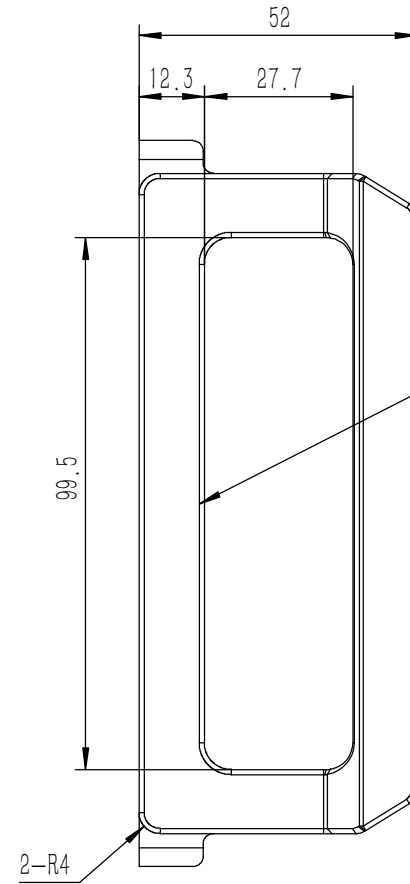
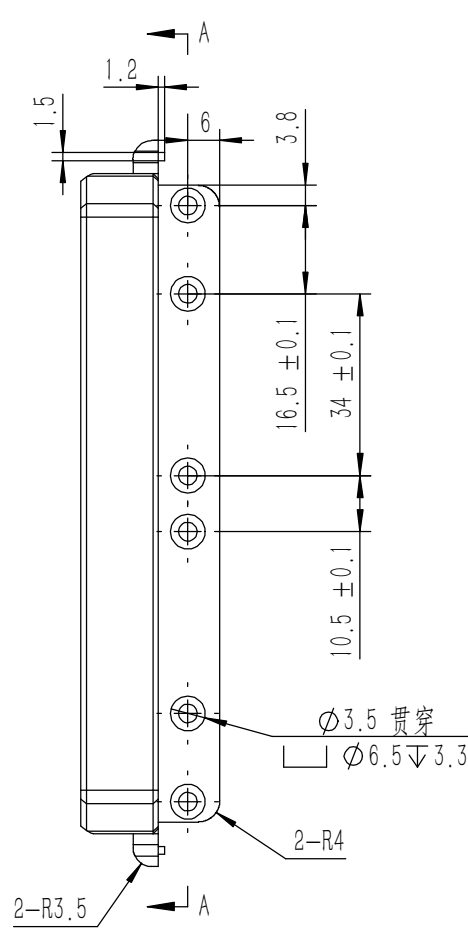
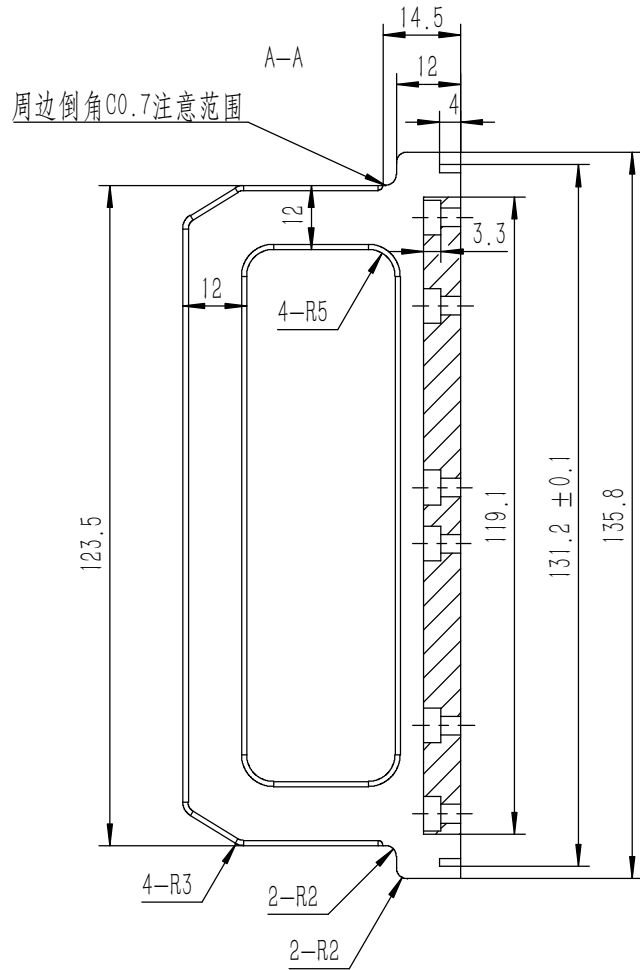
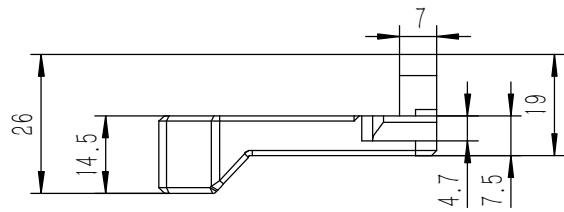


技术要求:

- 1、零件加工表面不应有划痕、擦伤等损伤零件表面的缺陷;
- 2、去除毛刺飞边,锐角倒钝;
- 3、未标注尺寸见3D数模。

Break sharp edges (未注锐边倒角): Ch 0.05 to 0.25 x45°	Angular tolerances (未注角度公差): <6° ± 10' <30° ± 20' <120° ± 30' >120° ± 1°
Position tolerances (未注位置公差): ±0.05	

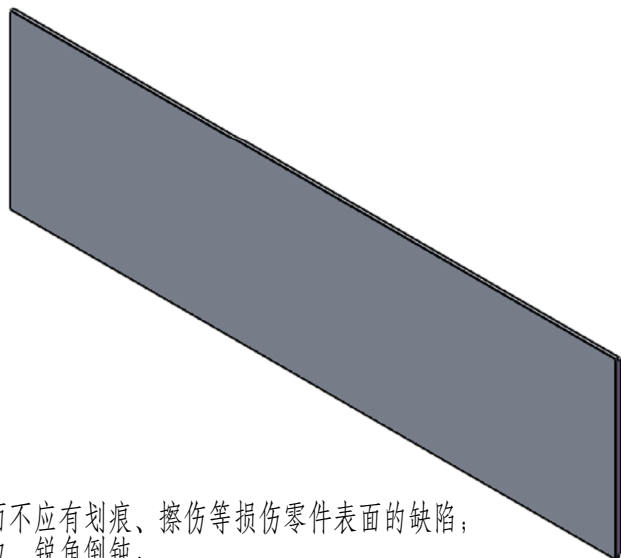
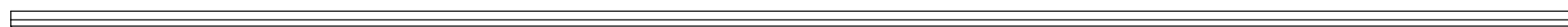
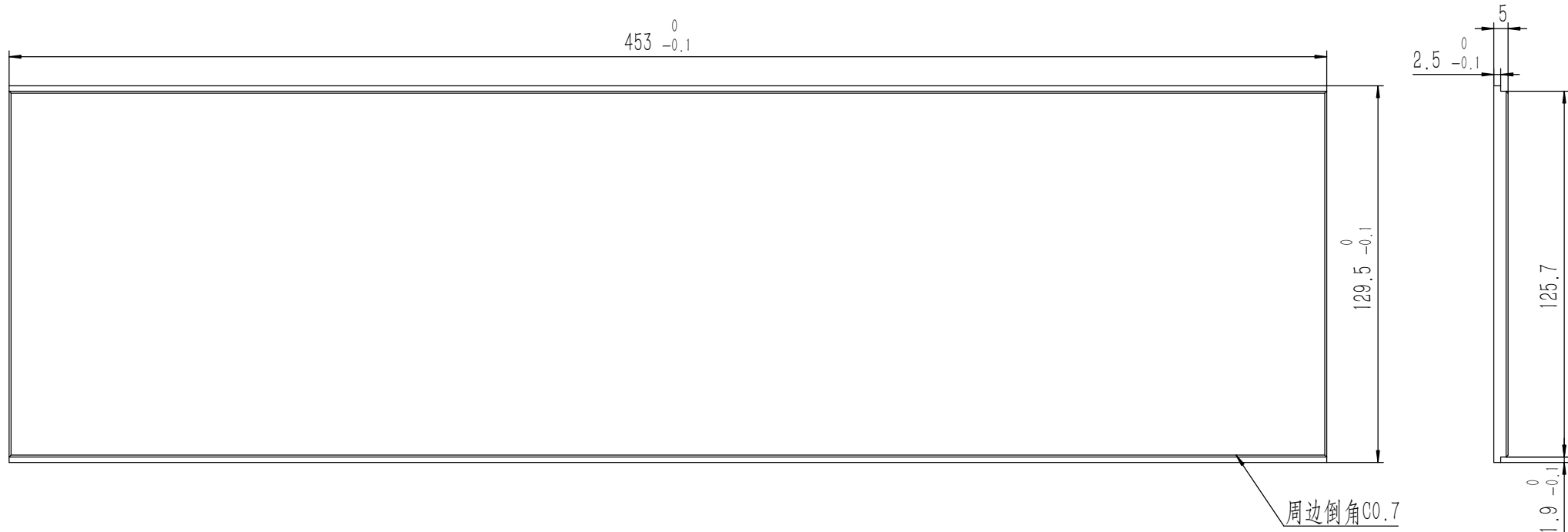
Tolerances (未注公差): 0.5 to 6 ± 0.1 6 to 30 ± 0.2 30 to 120 ± 0.3 120 to 400 ± 0.4	Material (材料): 6063-T5	YONGU 永固
Weight: (重量) (Kg) 0.076	Protection: (表面处理):	
Part Name (零/部件名称):	D后防护	Drawing Number (图号): YG-D08-0000-009
Drawn by (绘图): 邓展锋	Date (日期): 2020.05.14	Size (图幅): A3
Check by (校对):	Date (日期):	Scale (比例): 1:1
Signature by (批准):	Date (日期):	Revision (版本): A1



技术要求:

- 1、零件加工表面不应有划痕、擦伤等损伤零件表面的缺陷;
- 2、去除毛刺飞边, 锐角倒钝;
- 3、未标注尺寸见3D数模。

Tolerances (未注公差): 0.5 to 6 ± 0.1 6 to 30 ± 0.2 30 to 120 ± 0.3 120 to 400 ± 0.4	Material (材料):	6063-T5		YONGU 永固
	Weight: (重量) (Kg)	0.124		
Break sharp edges (未注锐边倒角): Ch 0.05 to 0.25 x45°	Protection: (表面处理):			Drawing Number (图号): YG-D08-0000-008
	Part Name (零/部件名称):	D拉手		
Position tolerances (未注位置公差): ±0.05	Angular tolerances (未注角度公差): <6° ± 10' <30° ± 20' <120° ± 30' >120° ± 1°	Drawn by (绘图): 邓展锋	Date (日期): 2020.05.22	Size (图幅): A3
		Check by (校对):	Date (日期):	Scale (比例): 1:1
		Signature by (批准):	Date (日期):	Revision (版本):
				Sheet (页数): 1 / 1

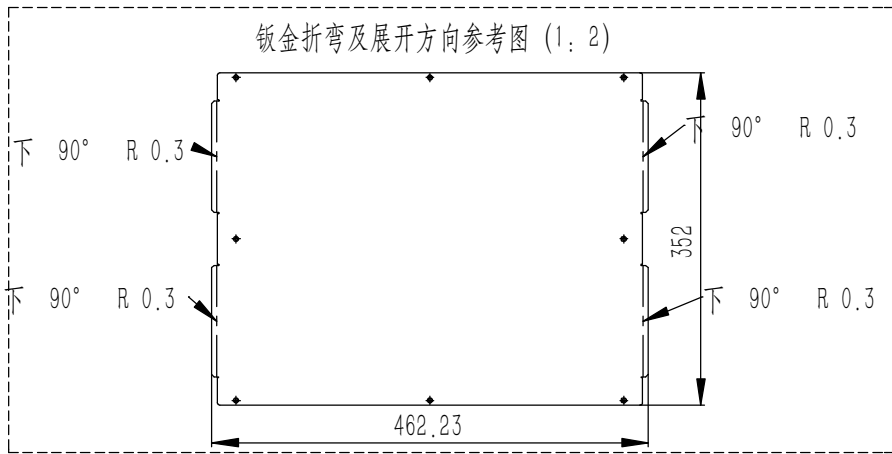
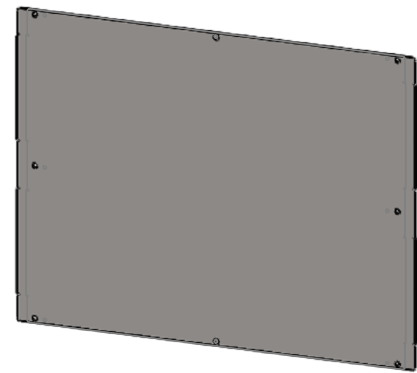
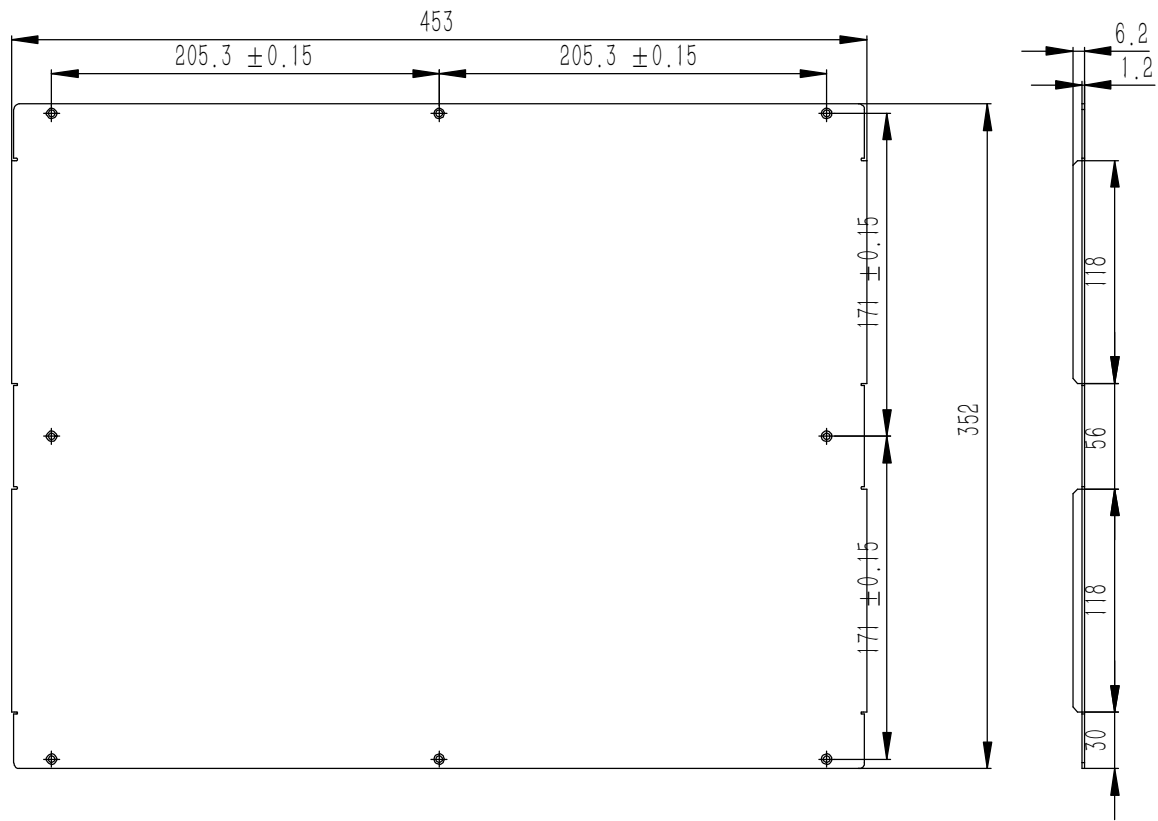


0.15

技术要求:

- 1、零件加工表面不应有划痕、擦伤等损伤零件表面的缺陷;
- 2、去除毛刺飞边, 锐角倒钝;
- 3、未标注尺寸见3D数模。

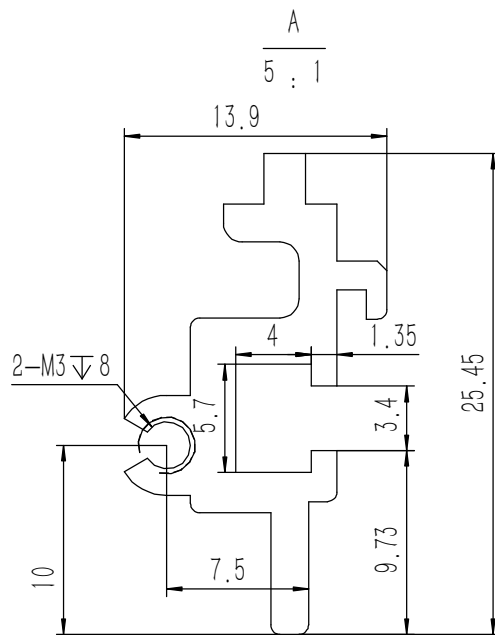
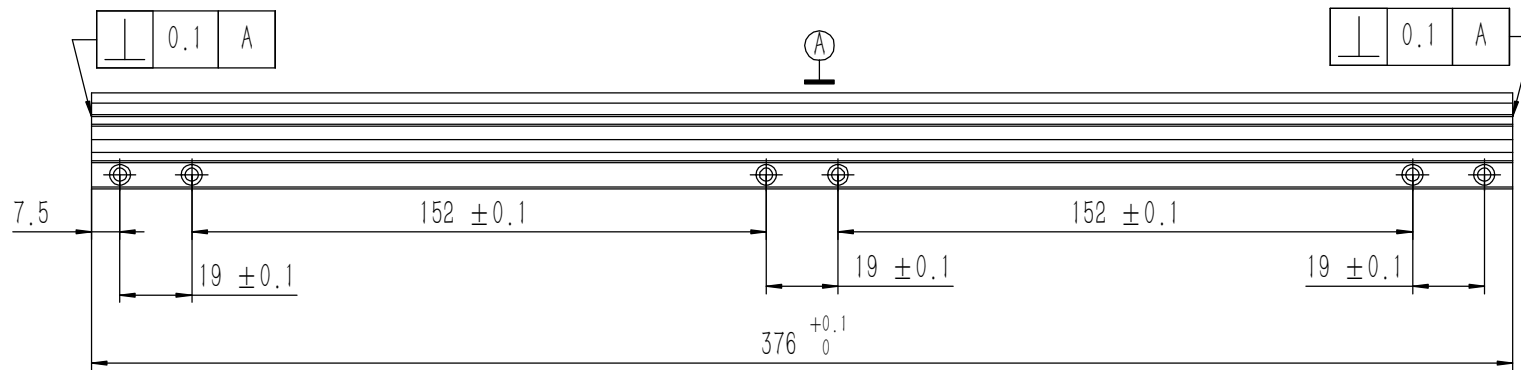
<p>Break sharp edges (未注锐边倒角): Ch 0.05 to 0.25 x45°</p> <p>Position tolerances (未注位置公差): ±0.05</p>	<p>Angular tolerances (未注角度公差): <6° ± 10' <30° ± 20' <120° ± 30' >120° ± 1°</p>	<p>Tolerances (未注公差):</p> <p>0.5 to 6 ± 0.1 6 to 30 ± 0.2 30 to 120 ± 0.3 120 to 400 ± 0.4</p>	<p>Material (材料): 5052-H32</p>	<p>YONGU </p>	
		<p>Weight: (重量) (Kg): 0.774</p>	<p>Protection: (表面处理):</p>		
		<p>Part Name (零/部件名称): 前后面板</p>			<p>Drawing Number (图号): YG-D08-0000-001</p>
		<p>Drawn by (绘图): 莫永康</p>	<p>Date (日期): 2020.05.22</p>		<p>Size: (图幅): A2</p>
		<p>Check by (校对):</p>	<p>Date (日期):</p>	<p>Scale (比例): 1:1</p>	
		<p>Signature by (批准):</p>	<p>Date (日期):</p>	<p>Revision (版本): A1</p>	
				<p>Sheet (页数): 1 / 1</p>	



- 技术要求:
- 1、零件加工表面不应有划痕、擦伤等损伤零件表面的缺陷;
 - 2、去除毛刺飞边, 锐角倒钝;
 - 3、未标注尺寸见3D数模。

Break sharp edges (未注锐边倒角): Ch 0.05 to 0.25 x45°	Angular tolerances (未注角度公差): <6° ± 10' <30° ± 20' <120° ± 30' >120° ± 1°
Position tolerances (未注位置公差): ±0.05	

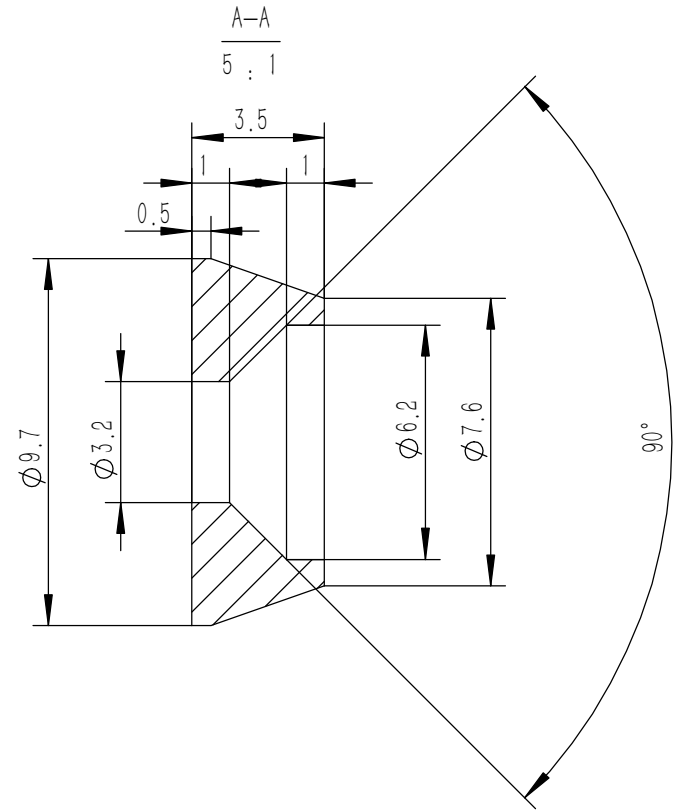
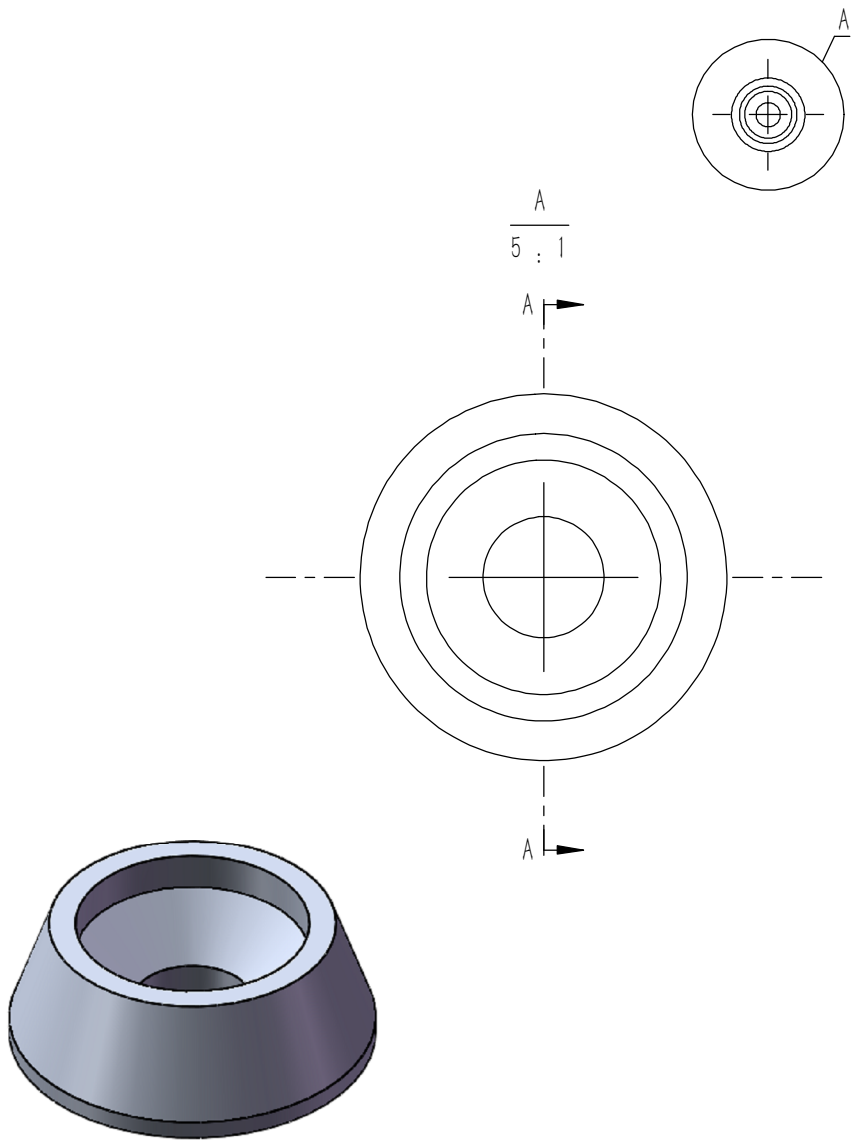
Tolerances (未注公差): 0.5 to 6 ± 0.1 6 to 30 ± 0.2 30 to 120 ± 0.3 120 to 400 ± 0.4	Material (材料): 电解板	YONGU 永固	
	Weight: (重量) (Kg): 1.509		
	Protection: (表面处理):		
	Part Name (零/部件名称): D安装垫板	Drawing Number (图号): YG-D08-0000-004	
Drawn by (绘图): 邓展锋	Date (日期): 2020.05.22	Size (图幅): A0	
Check by (校对):	Date (日期):	Scale (比例): 1:1	
Signature by (批准):	Date (日期):	Revision (版本):	
			Sheet (页数): 1 / 1



技术要求:

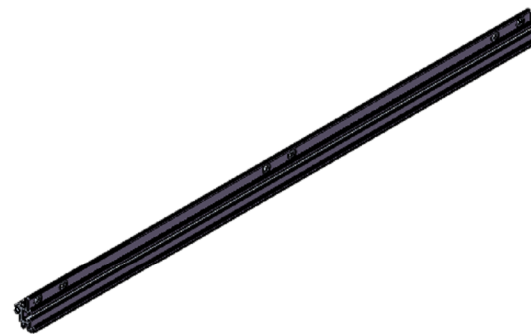
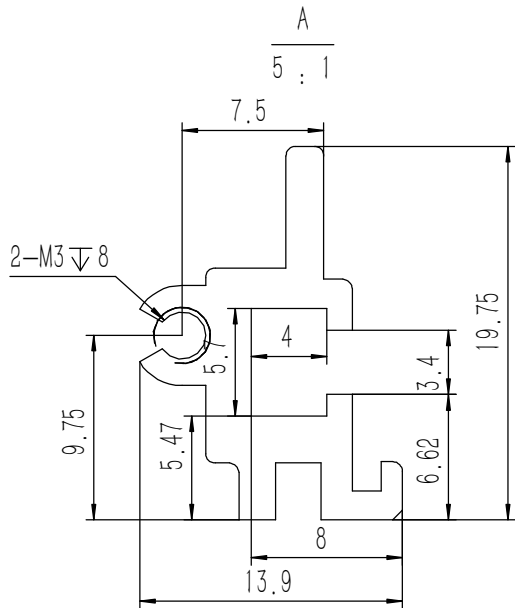
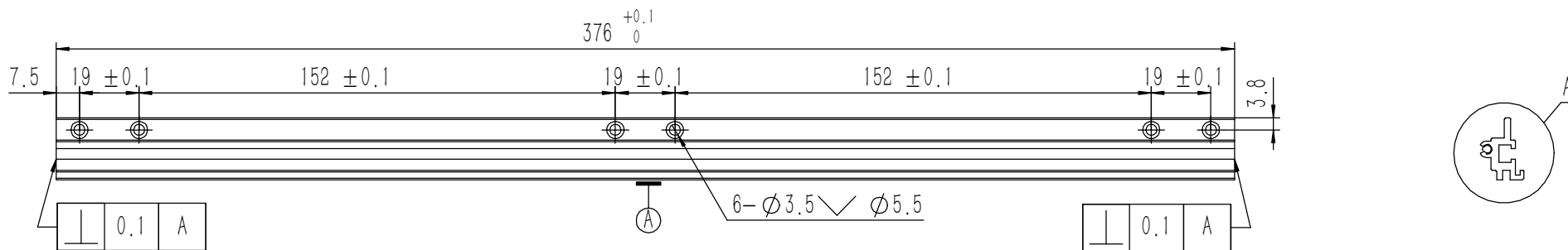
- 1、零件加工表面不应有划痕、擦伤等损伤零件表面的缺陷;
- 2、去除毛刺飞边, 锐角倒钝;
- 3、未标注尺寸见3D数模。

Tolerances (未注公差): 0.5 to 6 ± 0.1 6 to 30 ± 0.2 30 to 120 ± 0.3 120 to 400 ± 0.4	Material (材料): 6063-T5	YONGU 永固
	Weight: (重量) (Kg): 0.107	
Break sharp edges (未注锐边倒角): Ch 0.05 to 0.25 x45°	Protection: (表面处理):	Drawing Number (图号): YG-D08-0000-007
Position tolerances (未注位置公差): ±0.05	Part Name (零/部件名称): 组合侧板	
Angular tolerances (未注角度公差): <6° ± 10' <30° ± 20' <120° ± 30' >120° ± 1°	Drawn by (绘图): 莫永康	Date (日期): 2020.05.22
	Check by (校对):	Date (日期):
	Signature by (批准):	Date (日期):
	Size (图幅): A2	Scale (比例): 1:1
	Revision (版本): A1	Sheet (页数): 1 / 1



技术要求:
 1、零件加工表面不应有划痕、擦伤等损伤零件表面的缺陷;
 2、去除毛刺飞边, 锐角倒钝;
 3、未标注尺寸见3D数模。

Tolerances (未注公差): 0.5 to 6 ± 0.1 6 to 30 ± 0.2 30 to 120 ± 0.3 120 to 400 ± 0.4	Material (材料):	5052-H32		YONGU 永固
	Weight: (重量) (Kg)	0.000		
Break sharp edges (未注锐边倒角): Ch 0.05 to 0.25 x45°	Protection: (表面处理):			Drawing Number (图号): YG-TY-ZSJ-001
	Position tolerances (未注位置公差): ±0.05	Part Name (零/部件名称):	螺丝装饰件 M3	
Angular tolerances (未注角度公差): <6° ± 10' <30° ± 20' <120° ± 30' >120° ± 1°	Drawn by (绘图):	莫永康	Date (日期):	2020.05.22
	Check by (校对):		Date (日期):	
	Signature by (批准):		Date (日期):	
		Scale (比例):	1:1	
		Revision (版本):	A1	
		Sheet (页数):	1 / 1	



技术要求:

- 1、零件加工表面不应有划痕、擦伤等损伤零件表面的缺陷;
- 2、去除毛刺飞边, 锐角倒钝;
- 3、未标注尺寸见3D数模。

Tolerances (未注公差): 0.5 to 6 ± 0.1 6 to 30 ± 0.2 30 to 120 ± 0.3 120 to 400 ± 0.4	Material (材料):	6063-T5	
	Weight: (重量) (Kg):	0.091	
Break sharp edges (未注锐边倒角): Ch 0.05 to 0.25 x45°	Protection: (表面处理):		
	Position tolerances (未注位置公差): ±0.05	Part Name (零/部件名称):	组合侧板
Angular tolerances (未注角度公差): <6° ± 10' <30° ± 20' <120° ± 30' >120° ± 1°	Signature by (绘图):	莫永康	Drawing Number (图号):
	Signature by (校对):		YG-D08-0000-005
	Signature by (批准):		Size: (图幅): A2
	Date (日期):	2020.05.22	Scale (比例): 1:1
	Date (日期):		Revision (版本): A1
	Date (日期):		Sheet (页数): 1 / 1

YONGU 永固