

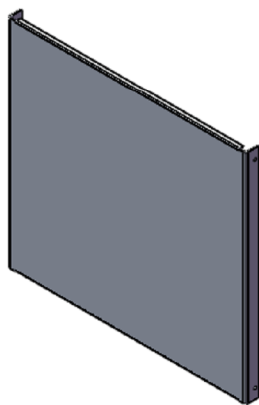
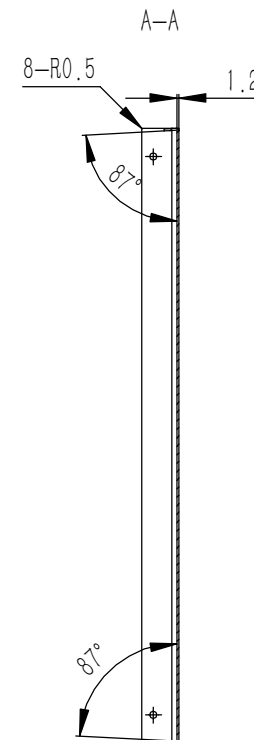
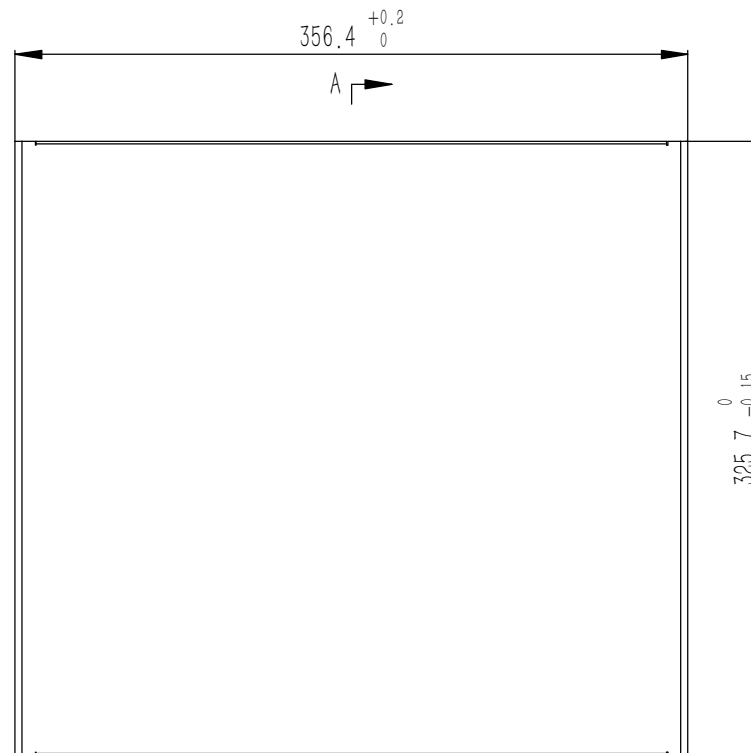
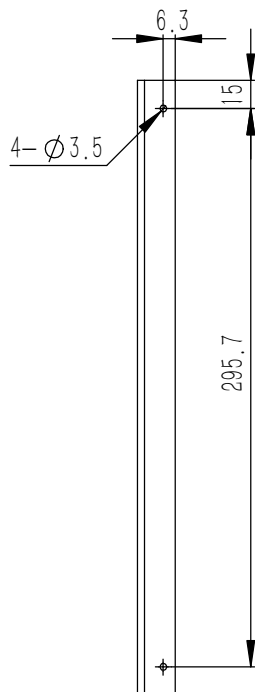
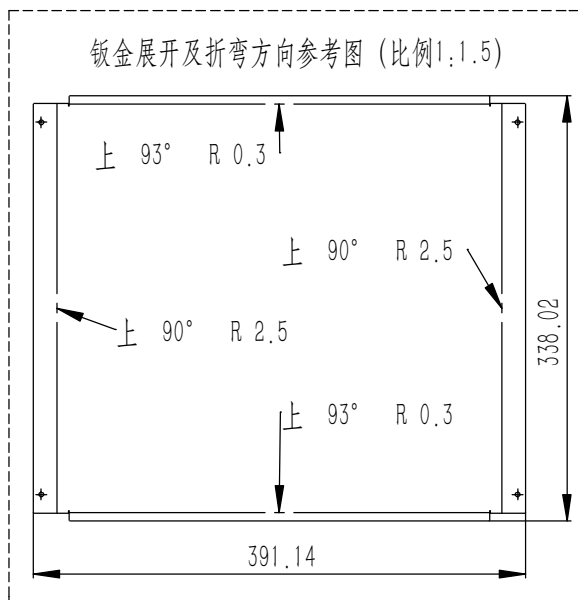
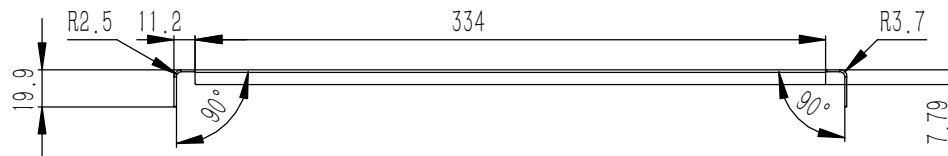
技术要求:

- 1、必须按照设计、工艺要求及本规定和有关标准进行装配;
- 2、所有零部件(包括外购、外协件)必须具有检验合格证方能进行装配;
- 3、零件在装配前必须清理和清洗干净,不得有毛刺、飞边、氧化皮、锈蚀、切屑、砂粒、灰尘和油污等,并应符合相应清洁度要求;
- 4、装配过程中零件不得磕碰、划伤和锈蚀;
- 5、油漆未干的零件不得进行装配;
- 6、相对运动的零件,装配时接触面间应加润滑油脂;
- 7、各零、部件装配后相对位置应准确。

25	YG-D06-0000-005	组合侧板	6063-T5	2	0.079	
24	YG-TY-ZSJ-001	螺丝装饰件 M3	5052-H32	8	0.000	
23	YG-D06-0000-006	组合侧板	6063-T5	6	0.193	
22	YG-TY-LMT-002	塑料螺母套 M3	ABS	14	0.0001	
21	YG-D06-0000-007	组合侧板	6063-T5	2	0.093	
20	GB-T-973-1976-C-NI-M3X14	碳钢镀镍十字大扁头螺丝M3X14	普通碳钢	8	0.001	
19	GB-T-819.1-2000-C-NI-M3X6	碳钢镀镍十字沉头螺丝M3X6	普通碳钢	26	0.0004	
18	YG-D06-0000-004	D安装垫板	电解板	1	0.929	
17	YG-D06-0000-001	前后面板	5052-H32	2	0.800	
16	YG-D06-0000-008	D拉手	6063-T5	2	0.177	
15	GB-T-70.1-2000-S-NL-M3X8	不锈钢内六角杯头螺丝M3X8	SUS 304	32	0.001	
14	GB-T-70.3-2000-C-NI-M3X8	芳生镀白镍内六角沉头螺丝M3X8	普通碳钢	8	0.0004	
13	GB-T-39-1988-C-ZI-M3	方螺母镀锌M3	普通碳钢	14	0.0004	
12	YG-D06-0000-009	D后防护	6063-T5	2	0.104	
11	S-M3-1-ZI	压铆螺母镀锌M3X1	普通碳钢	8	0.3750	
10	YG-TY-JJ-003	D后机脚	6063-T5	2	0.028	
9	YG-D06-0000-011	D中间横梁	6063-T5	1	0.134	
8	YG-D06-0000-003	下盖板	5052-H32	1	0.422	
7	YG-TY-JJ-002	D活动机脚	6063-T5	2	0.017	
6	YG-TY-GZ-001	钢珠 D4.7	普通碳钢	2	0.0004	
5	YG-TY-JJ-001	D前机脚座	6063-T5	2	0.023	
4	YG-TY-TH-001	弹簧 0.6X4X20	普通碳钢	2	0.000	
3	GB-T-80-2007-S-NL-M6X10	不锈钢内六角凹端紧定螺钉M6X10	普通碳钢	2	0.0019	
2	YG-D06-0000-010	D前后横梁	6063-T5	4	0.217	
1	YG-D06-0000-002	上盖板	5052-H32	1	0.423	

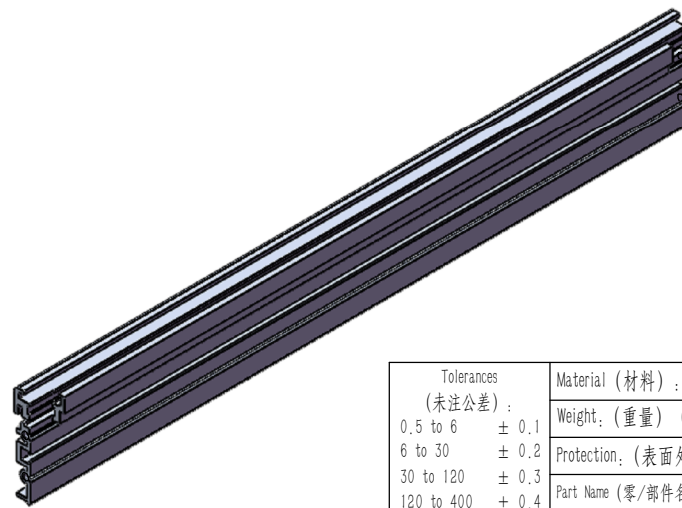
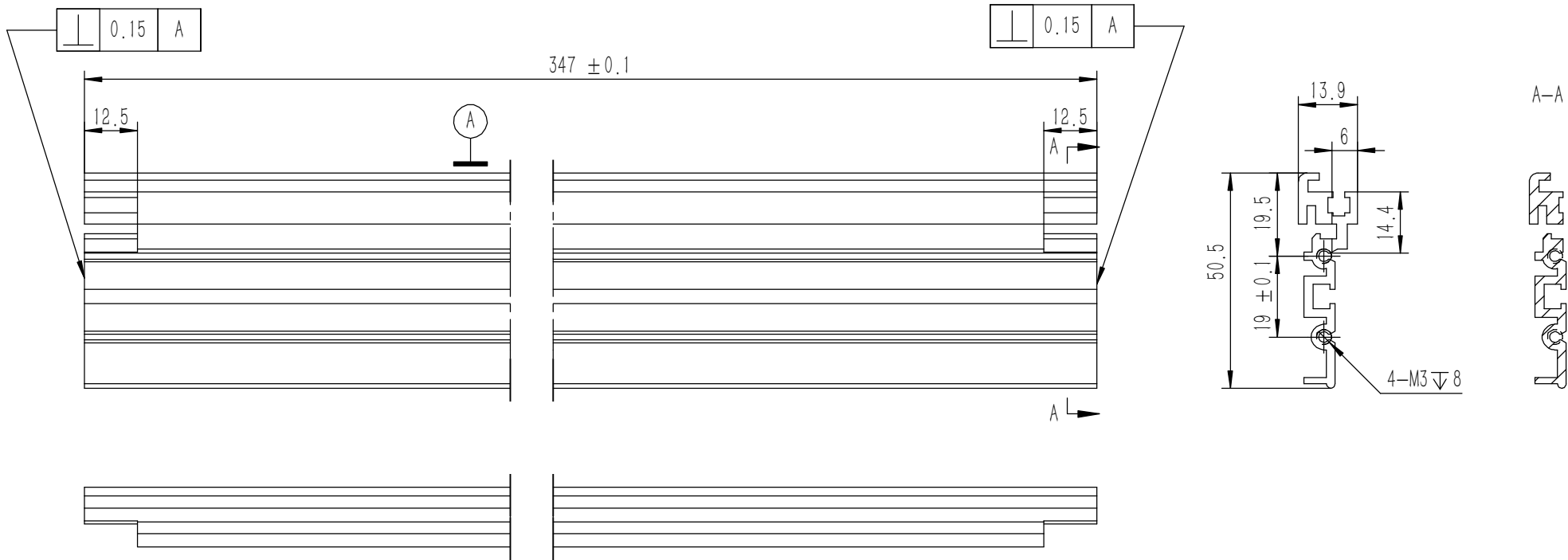
序号	图号	名称	材料	数量	单重	备注
Tolerances (未注公差):		Material (材料): (装配图)				
0.5 to 6 ± 0.1		Weight: (重量) (Kg): 6.645				
6 to 30 ± 0.2		Protection: (表面处理):				
30 to 120 ± 0.3		Part Name (零/部件名称):				
120 to 400 ± 0.4		Drawing Number (图号):				
Break sharp edges (未注锐边倒角):		D06机箱				
Ch 0.05 to 0.25 x45°		YG-D06-0000-000				
Position tolerances (未注位置公差): ± 0.05		Drawn by (绘图): 莫永康		Date (日期): 2020.05.23		Size (图幅): A0
Angular tolerances (未注角度公差):		Check by (校对):		Date (日期):		Scale (比例): 1:1.5
<6° ± 10'		Signature by (批准):		Date (日期):		Sheet (页数):
<30° ± 20'						Revision (版本): A1
<120° ± 30'						1 / 1
>120° ± 1°						

**YONGU** 永固



- 技术要求:
- 1、零件加工表面不应有划痕、擦伤等损伤零件表面的缺陷;
  - 2、去除毛刺飞边, 锐角倒钝;
  - 3、未标注尺寸见3D数模。

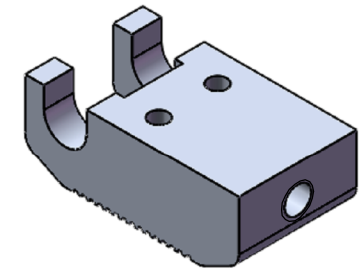
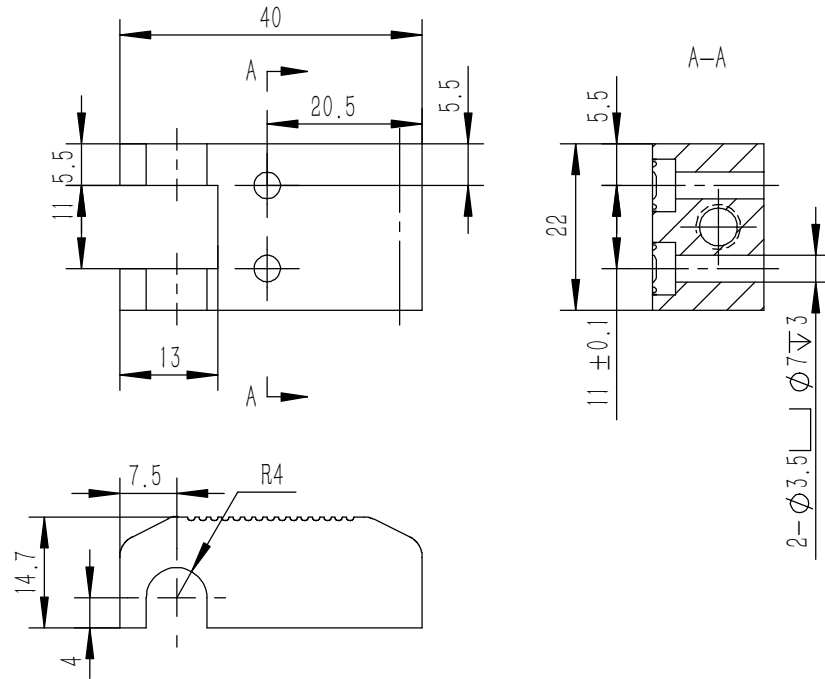
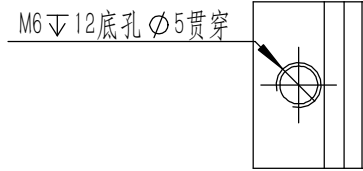
Tolerances (未注公差): 0.5 to 6 ± 0.1 6 to 30 ± 0.2 30 to 120 ± 0.3 120 to 400 ± 0.4	Material (材料):	5052-H32		<b>YONGU</b> 永固				
	Weight: (重量) (Kg):	0.423						
Break sharp edges (未注锐边倒角): Ch 0.05 to 0.25 x45°	Protection: (表面处理):			Drawing Number (图号): YG-D06-0000-002				
	Part Name (零/部件名称):	上盖板						
Position tolerances (未注位置公差): ± 0.05	Angular tolerances (未注角度公差): <6° ± 10' <30° ± 20' <120° ± 30' >120° ± 1°	Drawn by (绘图):	莫永康	Date (日期):	2020.05.22	Size (图幅):	A0	Sheet (页数): 1 / 1
		Check by (校对):		Date (日期):		Scale (比例):	1:1	
		Signature by (批准):		Date (日期):		Revision (版本):	A1	



技术要求:

- 1、零件加工表面不应有划痕、擦伤等损伤零件表面的缺陷;
- 2、去除毛刺飞边, 锐角倒钝;
- 3、未标注尺寸见3D数模。

Tolerances (未注公差): 0.5 to 6 ± 0.1 6 to 30 ± 0.2 30 to 120 ± 0.3 120 to 400 ± 0.4	Material (材料):	6063-T5		<b>YONGU</b> 永固				
	Weight: (重量) (Kg)	0.217						
Break sharp edges (未注锐边倒角): Ch 0.05 to 0.25 x45°	Protection: (表面处理):			Drawing Number (图号): YG-D06-0000-010				
	Part Name (零/部件名称):	D前后横梁						
Position tolerances (未注位置公差): ±0.05	Angular tolerances (未注角度公差): <6° ± 10' <30° ± 20' <120° ± 30' >120° ± 1°	Drawn by (绘图):	邓展锋	Date (日期):	2020.05.22	Size (图幅):	A3	Sheet (页数): 1 / 1
		Check by (校对):		Date (日期):		Scale (比例):	1:1	
		Signature by (批准):		Date (日期):		Revision (版本):		



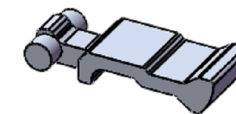
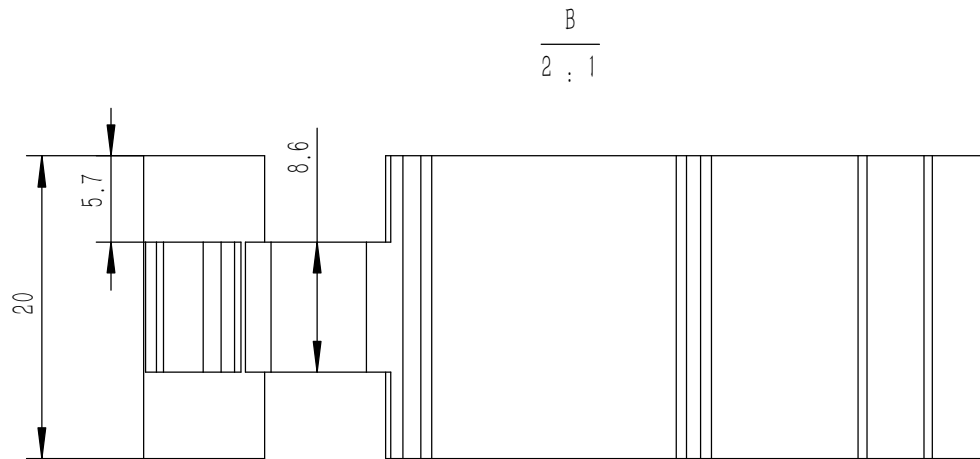
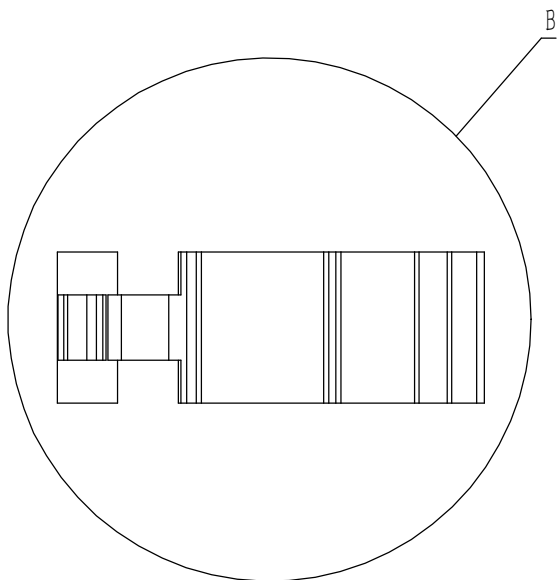
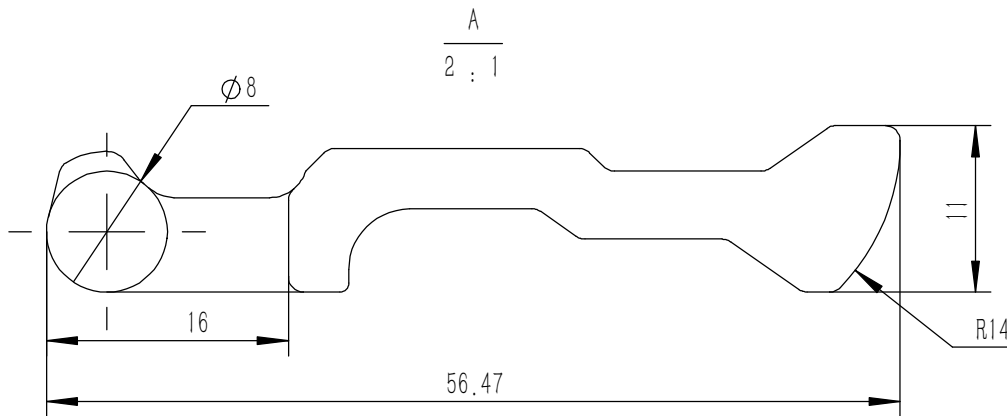
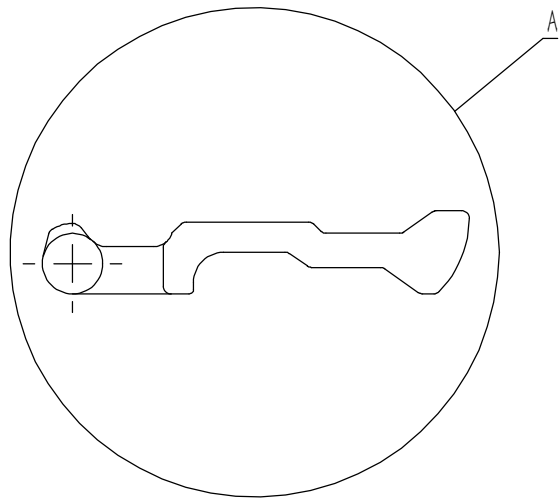
技术要求:

- 1、零件加工表面不应有划痕、擦伤等损伤零件表面的缺陷;
- 2、去除毛刺飞边, 锐角倒钝;
- 3、未标注尺寸见3D数模。

件/套(pcs/set)

Break sharp edges (未注锐边倒角): Ch 0.05 to 0.25 x45°	Angular tolerances (未注角度公差): <6° ± 10' <30° ± 20' <120° ± 30' >120° ± 1°
Position tolerances (未注位置公差): ±0.05	

Tolerances (未注公差): 0.5 to 6 ± 0.1 6 to 30 ± 0.2 30 to 120 ± 0.3 120 to 400 ± 0.4	Material (材料): 6063-T5	<b>YONGU</b> 永固	
	Weight: (重量) (Kg) 0.023		
	Protection: (表面处理):	Part Name (零/部件名称): D前机脚座	
		Drawing Number (图号): YG-TY-JJ-001	
	Drawn by (绘图): 邓展锋	Date (日期): 2020.05.22	Size: (图幅): A4
	Check by (校对):	Date (日期):	Scale (比例): 1:1
	Signature by (批准):	Date (日期):	Revision (版本): 1 / 1



技术要求:

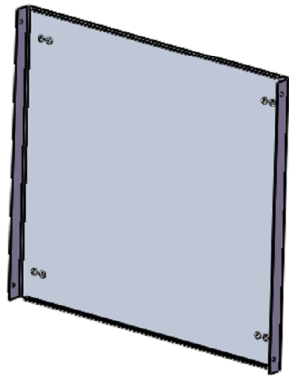
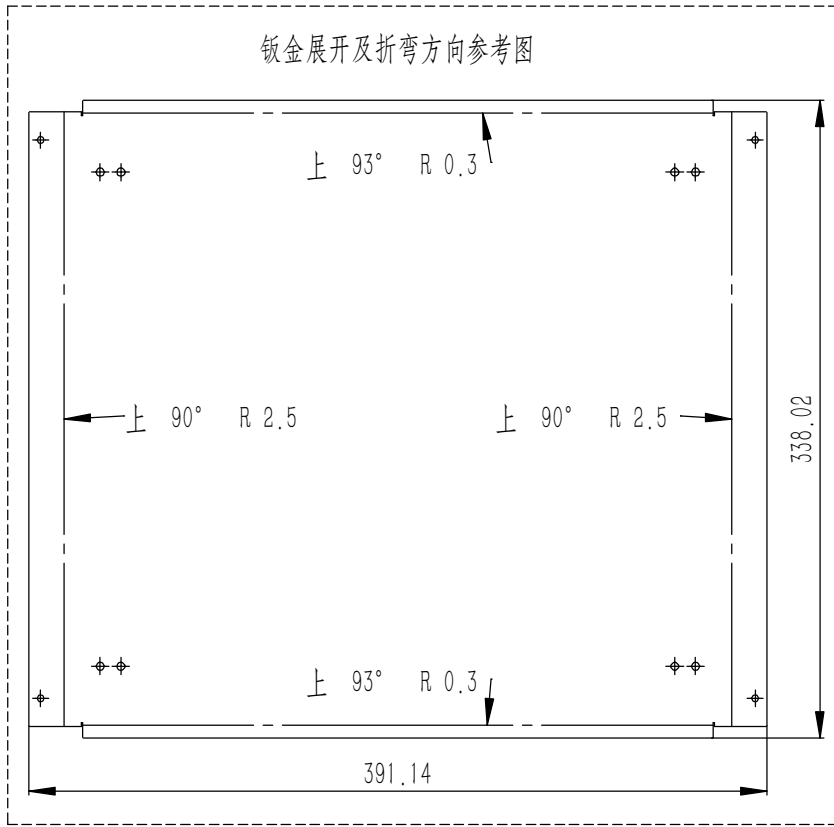
- 1、零件加工表面不应有划痕、擦伤等损伤零件表面的缺陷;
- 2、去除毛刺飞边, 锐角倒钝;
- 3、未标注尺寸见3D数模。

件/套(pcs/set)

Break sharp edges (未注锐边倒角): Ch 0.05 to 0.25 x45°	Angular tolerances (未注角度公差): <6° ± 10' <30° ± 20' <120° ± 30' >120° ± 1°
Position tolerances (未注位置公差): ±0.05	

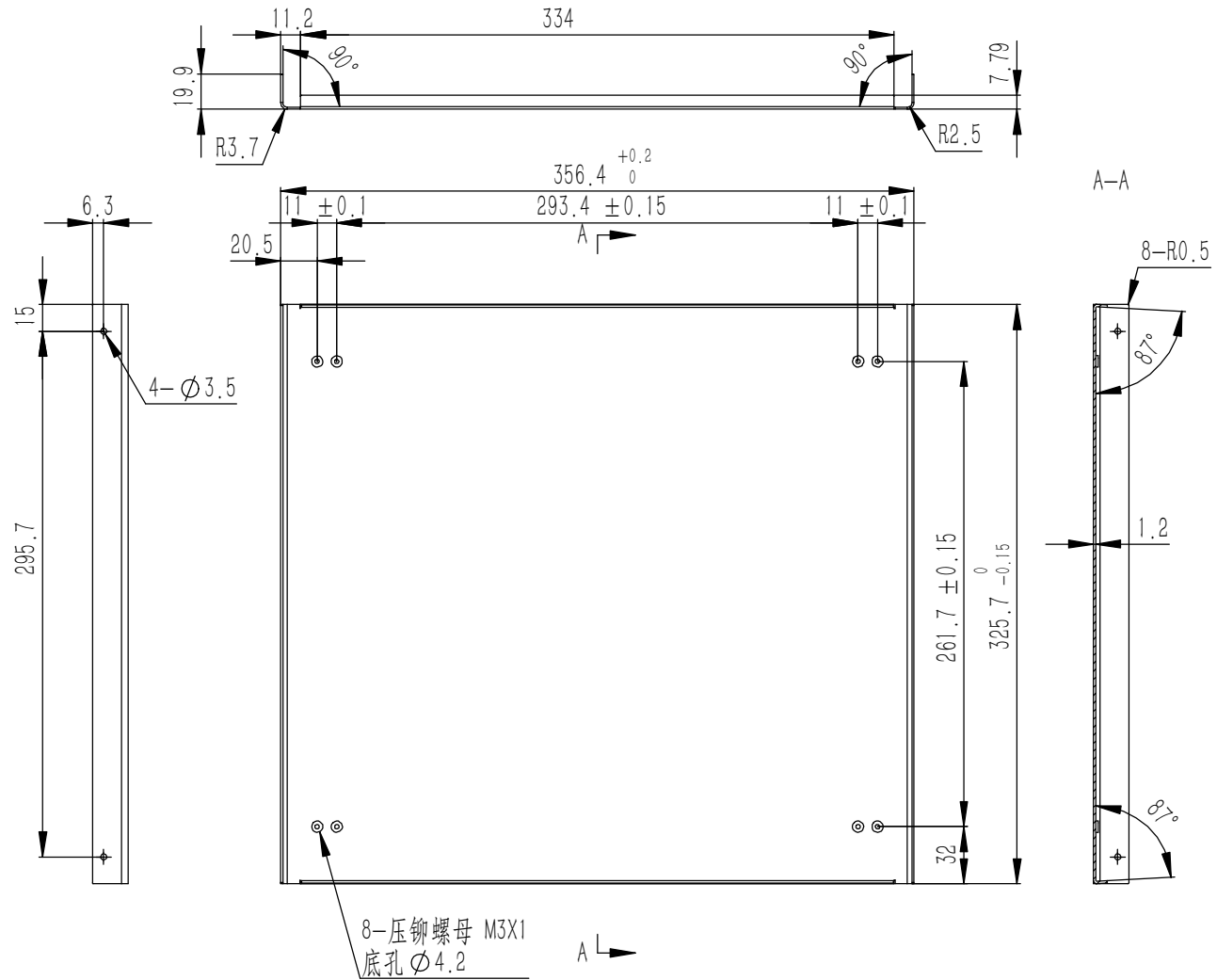
Tolerances (未注公差): 0.5 to 6 ± 0.1 6 to 30 ± 0.2 30 to 120 ± 0.3 120 to 400 ± 0.4	Material (材料): 6063-T5	
	Weight: (重量) (Kg) 0.017	
	Protection: (表面处理):	
	Part Name (零/部件名称): D活动机脚	Drawing Number (图号): YG-TY-JJ-002
	Drawn by (绘图): 邓展锋	Date (日期): 2020.05.22
	Check by (校对):	Date (日期):
	Signature by (批准):	Date (日期):
	Size: (图幅): A4	Sheet (页数): 1 / 1
	Scale (比例): 1:1	Revision (版本):

钣金展开及折弯方向参考图



技术要求:

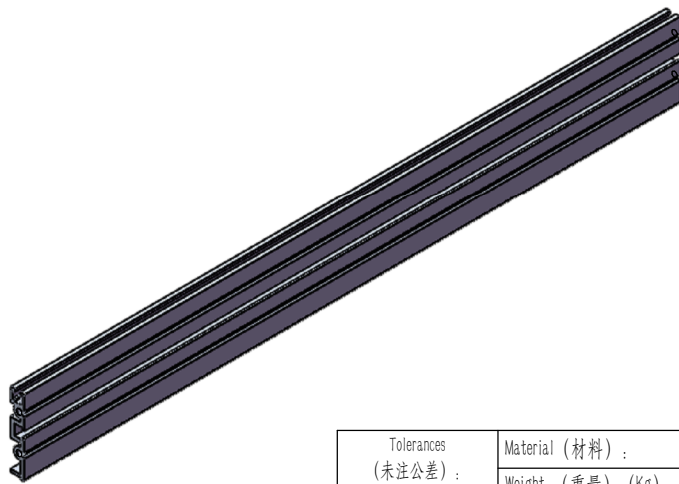
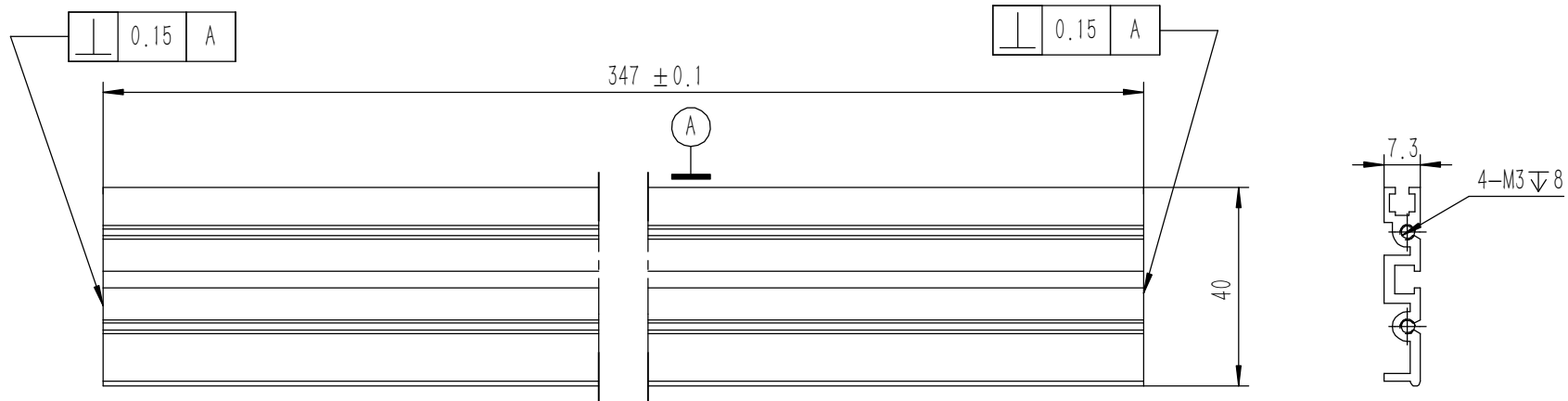
- 1、零件加工表面不应有划痕、擦伤等损伤零件表面的缺陷;
- 2、去除毛刺飞边, 锐角倒钝;
- 3、未标注尺寸见3D数模。



Break sharp edges (未注锐边倒角): Ch 0.05 to 0.25 x45°	Angular tolerances (未注角度公差): <6° ± 10' <30° ± 20' <120° ± 30' >120° ± 1°
Position tolerances (未注位置公差): ± 0.05	

Tolerances (未注公差): 0.5 to 6 ± 0.1 6 to 30 ± 0.2 30 to 120 ± 0.3 120 to 400 ± 0.4	Material (材料): 5052-H32
	Weight: (重量) (Kg): 0.425
	Protection: (表面处理):
	Part Name (零/部件名称): 下盖板
Drawn by (绘图): 莫永康	Date (日期): 2020.05.22
Check by (校对):	Date (日期):
Signature by (批准):	Date (日期):

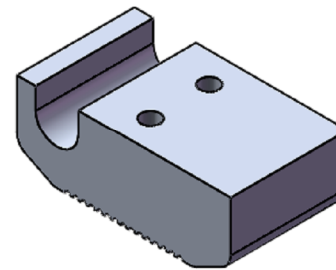
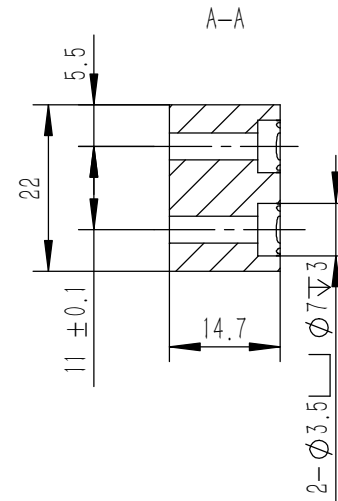
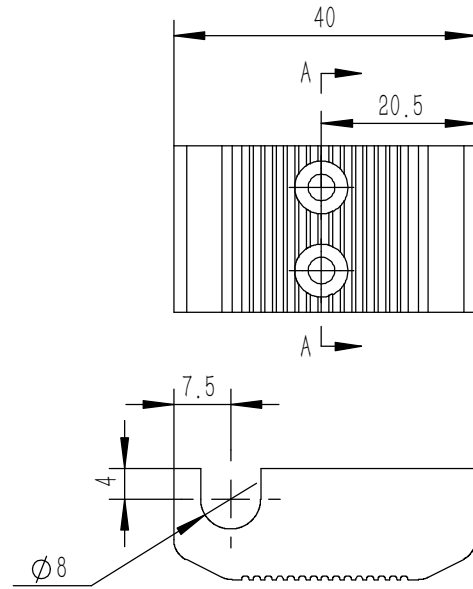
<h1>YONGU 永固</h1>		Drawing Number (图号): YG-D06-0000-003	
		Size (图幅): A0	Sheet (页数): 1 / 1
Scale (比例): 1:1	Revision (版本): A1		



技术要求:

- 1、零件加工表面不应有划痕、擦伤等损伤零件表面的缺陷;
- 2、去除毛刺飞边, 锐角倒钝;
- 3、未标注尺寸见3D数模。

Tolerances (未注公差): 0.5 to 6 ± 0.1 6 to 30 ± 0.2 30 to 120 ± 0.3 120 to 400 ± 0.4	Material (材料):	6063-T5		<b>YONGU</b> 永固				
	Weight: (重量) (Kg)	0.134						
Break sharp edges (未注锐边倒角): Ch 0.05 to 0.25 x45°	Protection: (表面处理):			Drawing Number (图号): YG-D06-0000-011				
	Part Name (零/部件名称):	D中间横梁						
Position tolerances (未注位置公差): ±0.05	Angular tolerances (未注角度公差): <6° ± 10' <30° ± 20' <120° ± 30' >120° ± 1°	Drawn by (绘图):	邓展锋	Date (日期):	2020.05.22	Size. (图幅):	A3	Sheet (页数): 1 / 1
		Check by (校对):		Date (日期):		Scale (比例):	1:1	
		Signature by (批准):		Date (日期):		Revision (版本):		

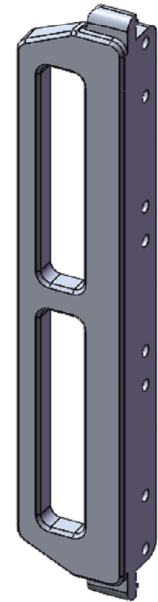
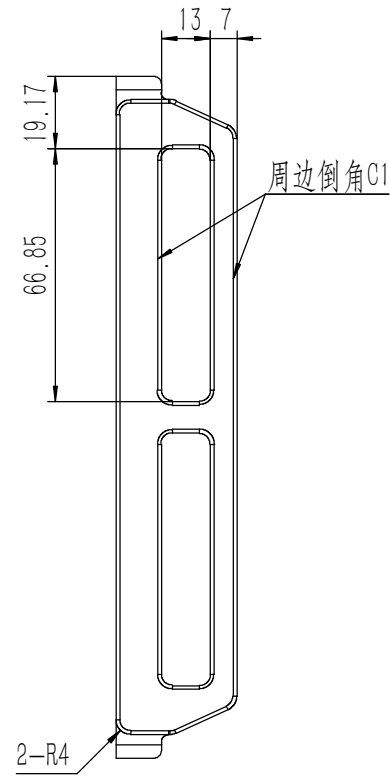
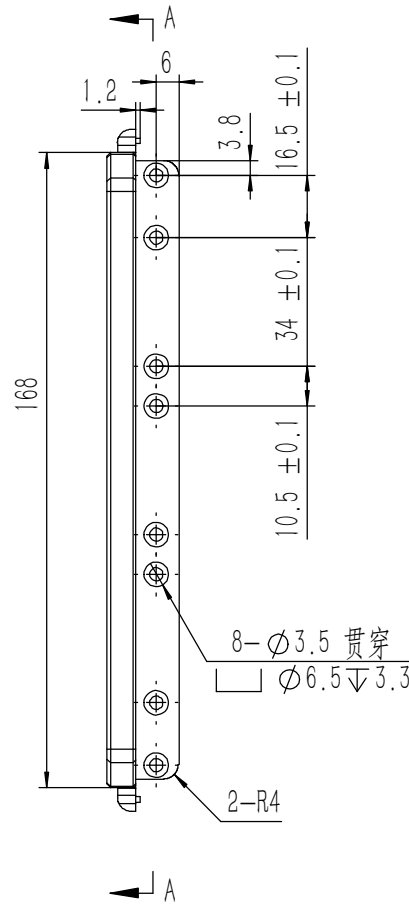
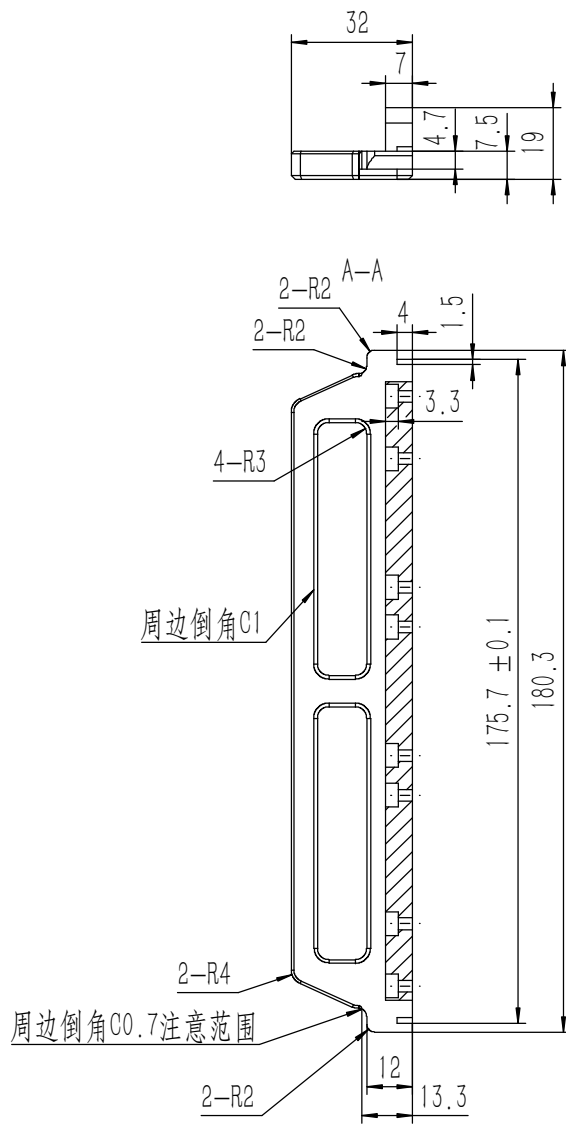


技术要求:

- 1、零件加工表面不应有划痕、擦伤等损伤零件表面的缺陷;
- 2、去除毛刺飞边, 锐角倒钝;
- 3、未标注尺寸见3D数模。

Tolerances (未注公差): 0.5 to 6 ± 0.1 6 to 30 ± 0.2 30 to 120 ± 0.3 120 to 400 ± 0.4	Material (材料):	6063-T5		<b>YONGU</b> 永固
	Weight: (重量) (Kg)	0.028		
Break sharp edges (未注锐边倒角): Ch 0.05 to 0.25 x45°	Protection: (表面处理):			Drawing Number (图号): YG-TY-JJ-003
	Position tolerances (未注位置公差): ±0.05	Part Name (零/部件名称):	D后机脚	
Angular tolerances (未注角度公差): <6° ± 10' <30° ± 20' <120° ± 30' >120° ± 1°	Drawn by (绘图):	邓展锋	Date (日期):	2020.05.22
	Check by (校对):		Date (日期):	
	Signature by (批准):		Date (日期):	
		Scale (比例):	1:1	
		Revision (版本):	1 / 1	

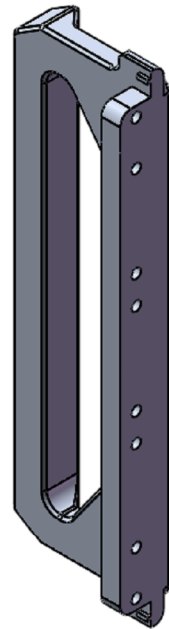
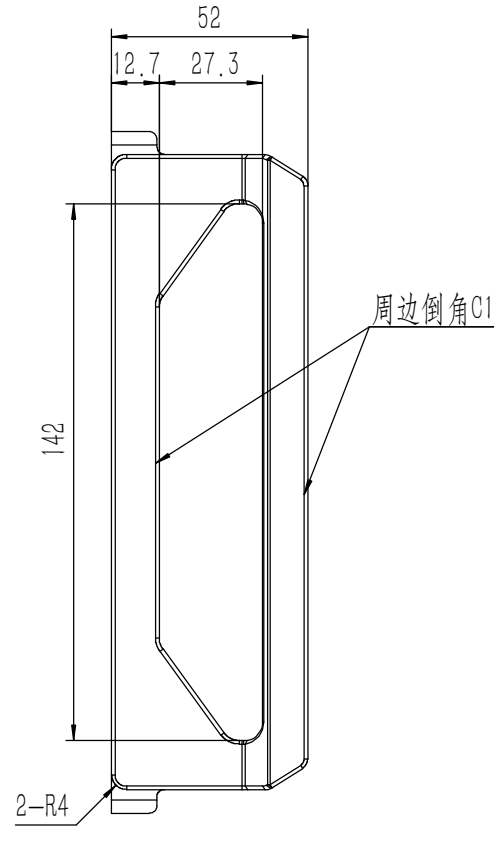
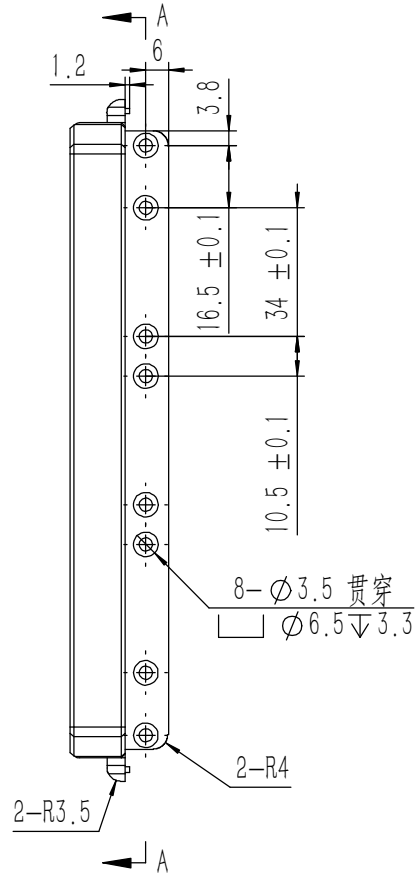
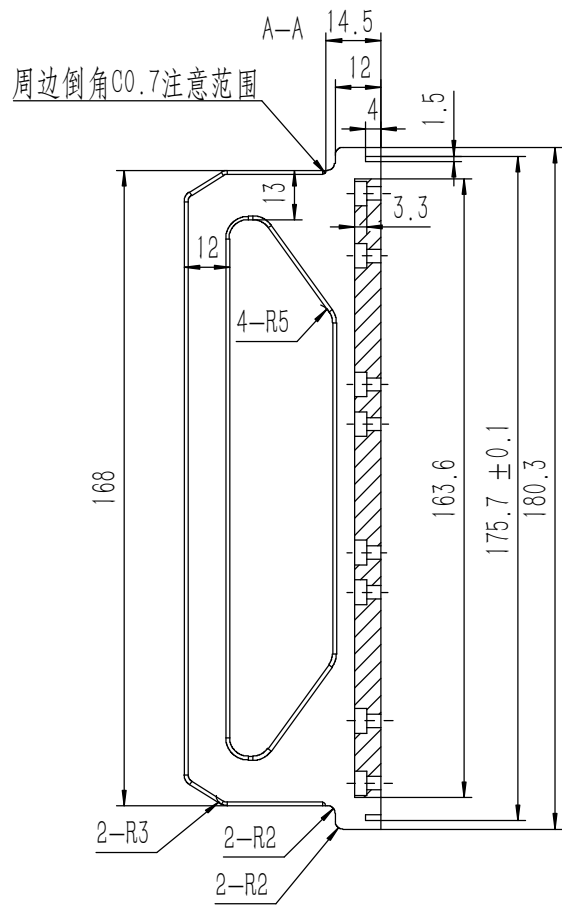
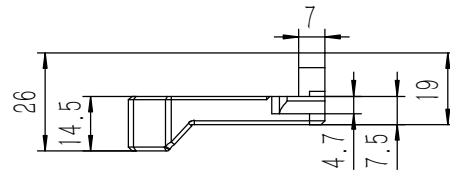




技术要求:

- 1、零件加工表面不应有划痕、擦伤等损伤零件表面的缺陷;
- 2、去除毛刺飞边,锐角倒钝;
- 3、未标注尺寸见3D数模。

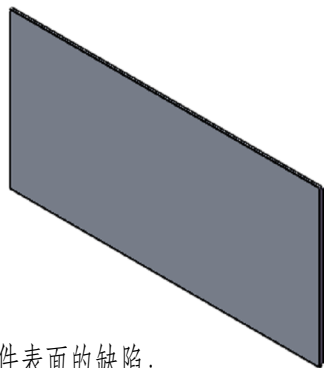
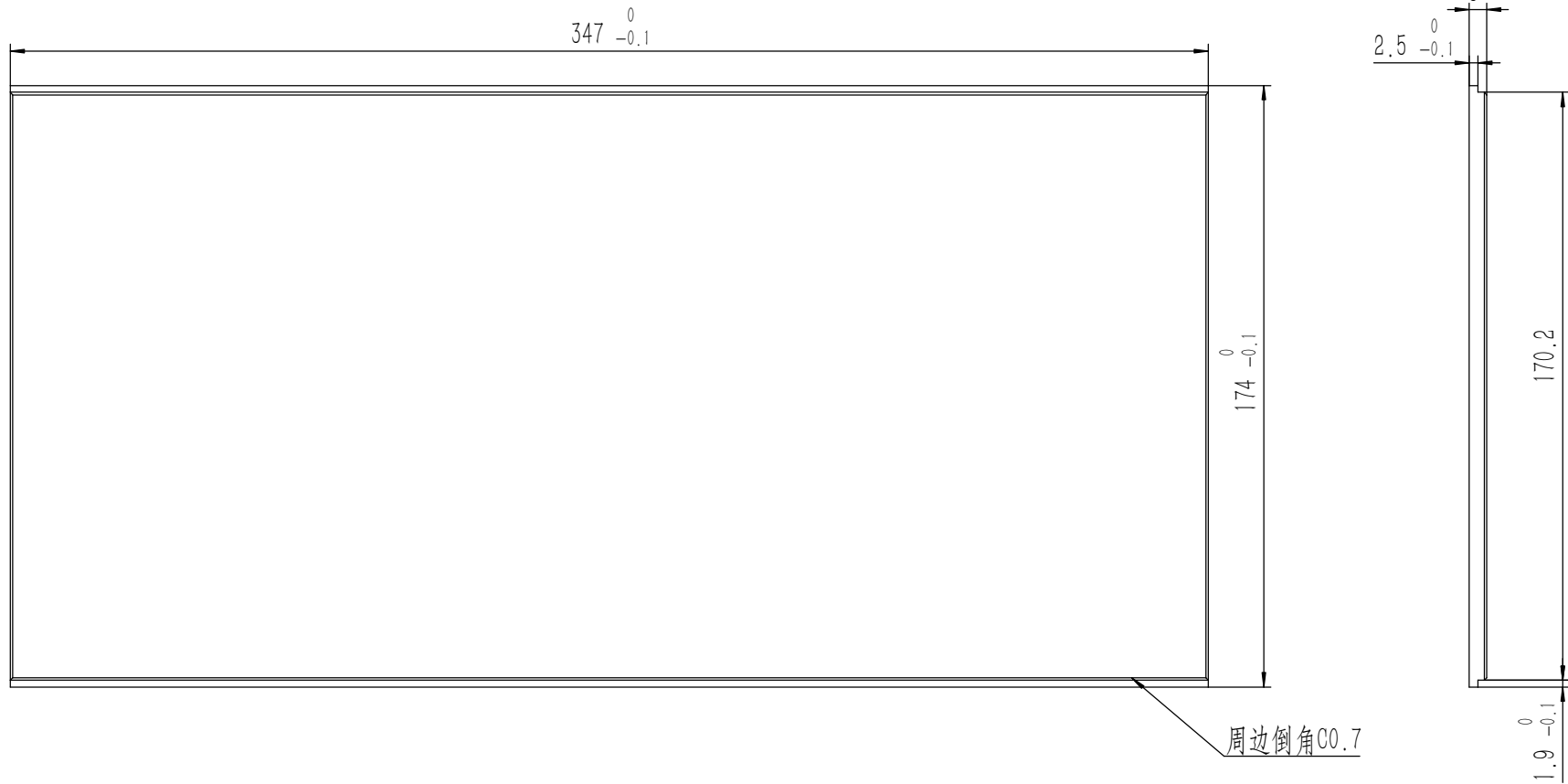
Tolerances (未注公差): 0.5 to 6 ± 0.1 6 to 30 ± 0.2 30 to 120 ± 0.3 120 to 400 ± 0.4	Material (材料):	6063-T5		<b>YONGU</b> 永固
	Weight: (重量) (Kg):	0.104		
Break sharp edges (未注锐边倒角): Ch 0.05 to 0.25 x45°	Protection: (表面处理):			Drawing Number (图号): YG-D06-0000-009
	Position tolerances (未注位置公差): ±0.05	Part Name (零/部件名称):	D后防护	
Angular tolerances (未注角度公差): <6° ± 10' <30° ± 20' <120° ± 30' >120° ± 1°	Drawn by (绘图):	邓展锋	Date (日期):	2020.05.14
	Check by (校对):		Date (日期):	
	Signature by (批准):		Date (日期):	
			Size: (图幅):	A2
			Scale (比例):	1:1
			Revision (版本):	A1
				Sheet (页数): 1 / 1



技术要求:  
 1、零件加工表面不应有划痕、擦伤等损伤零件表面的缺陷;  
 2、去除毛刺飞边,锐角倒钝;  
 3、未标注尺寸见3D数模。

Tolerances (未注公差): 0.5 to 6 ± 0.1 6 to 30 ± 0.2 30 to 120 ± 0.3 120 to 400 ± 0.4	Material (材料):	6063-T5	
	Weight: (重量) (Kg):	0.177	
Break sharp edges (未注锐边倒角): Ch 0.05 to 0.25 x45°	Protection: (表面处理):		
	Position tolerances (未注位置公差): ±0.05	Part Name (零/部件名称):	D拉手
Angular tolerances (未注角度公差): <6° ± 10' <30° ± 20' <120° ± 30' >120° ± 1°	Signature by (批准):	Date (日期):	
	Check by (校对):	Date (日期):	
Drawing Number (图号):		Size: (图幅):	A2
YG-D06-0000-008		Scale (比例):	1:1
Revision (版本):		Sheet (页数):	1 / 1



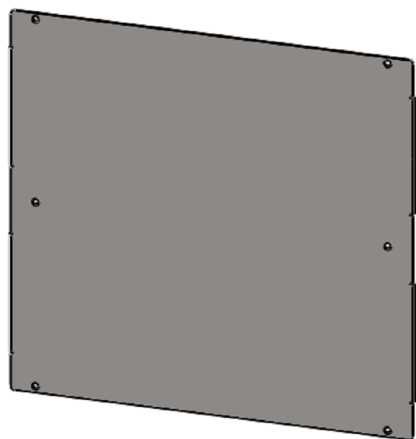
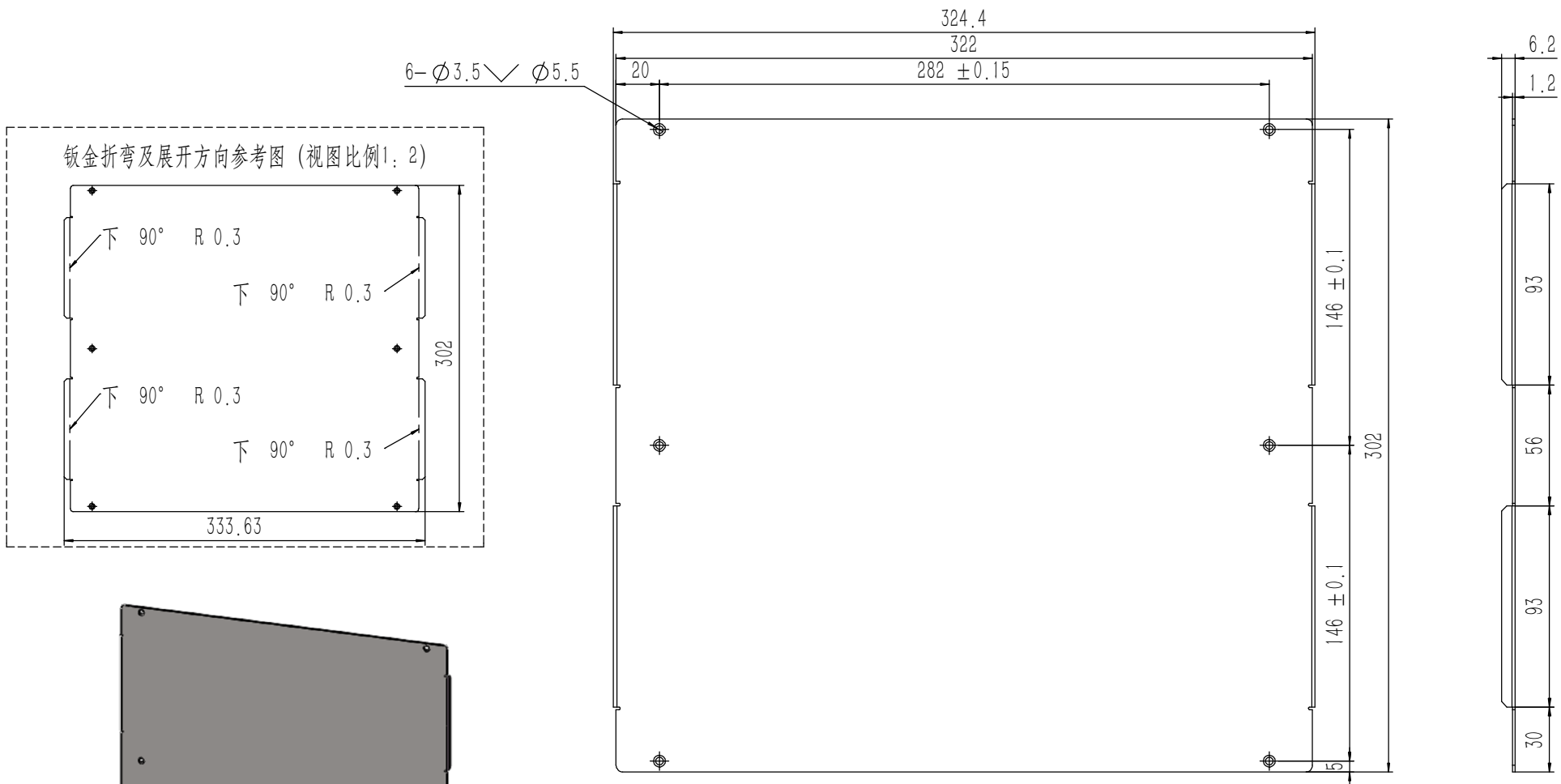


0.15

技术要求:

- 1、零件加工表面不应有划痕、擦伤等损伤零件表面的缺陷;
- 2、去除毛刺飞边, 锐角倒钝;
- 3、未标注尺寸见3D数模。

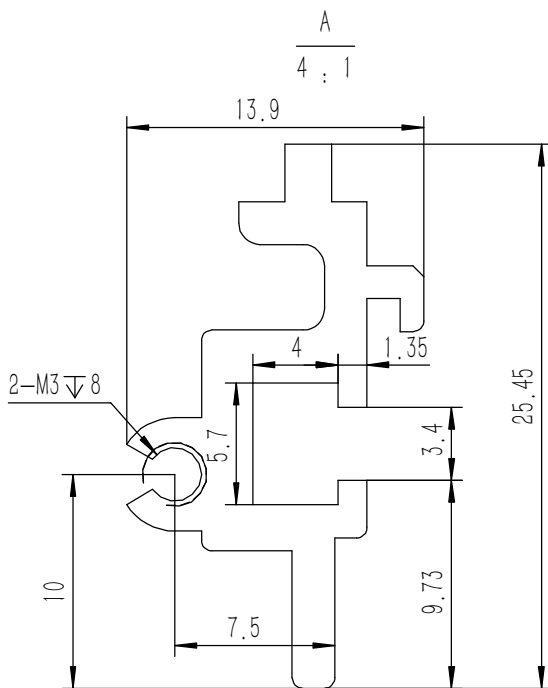
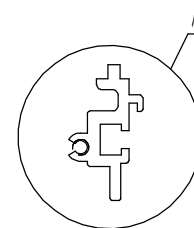
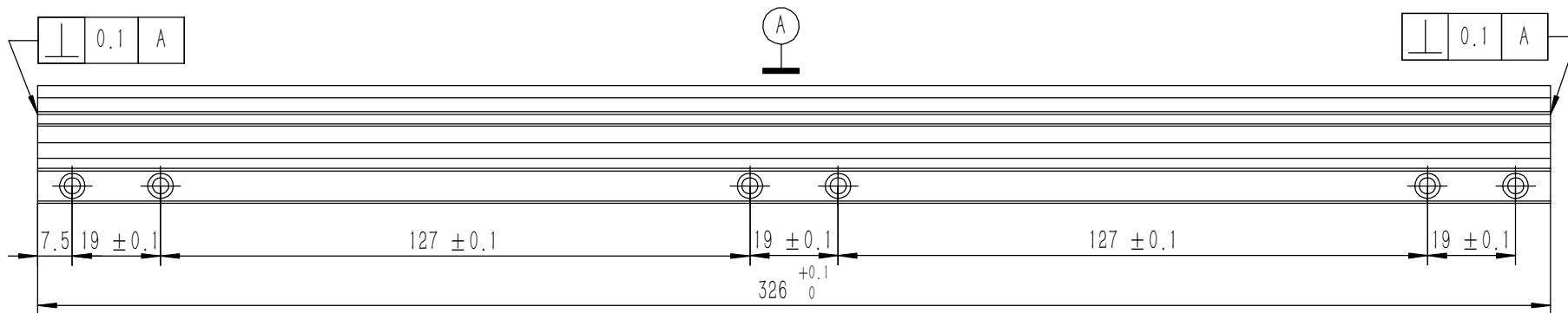
<p>Tolerances (未注公差):</p> <p>0.5 to 6 ± 0.1</p> <p>6 to 30 ± 0.2</p> <p>30 to 120 ± 0.3</p> <p>120 to 400 ± 0.4</p>	Material (材料):	5052-H32		
	Weight: (重量) (Kg):	0.800		
	Protection: (表面处理):			
	Part Name (零/部件名称):	前后面板		Drawing Number (图号):
<p>Break sharp edges (未注锐边倒角):</p> <p>Ch 0.05 to 0.25 x45°</p>	<p>Angular tolerances (未注角度公差):</p> <p>&lt;6° ± 10'</p> <p>&lt;30° ± 20'</p> <p>&lt;120° ± 30'</p> <p>&gt;120° ± 1°</p>	<p>Drawn by (绘图): 莫永康</p> <p>Date (日期): 2020.05.22</p>	<p>Size (图幅): A2</p> <p>Scale (比例): 1:1</p>	<p>Sheet (页数):</p> <p>1 / 1</p>
<p>Position tolerances (未注位置公差):</p> <p>±0.05</p>	<p>Signature by (批准):</p>	<p>Date (日期):</p>	<p>Revision (版本): A1</p>	



技术要求:

- 1、零件加工表面不应有划痕、擦伤等损伤零件表面的缺陷;
- 2、去除毛刺飞边, 锐角倒钝;
- 3、未标注尺寸见3D数模。

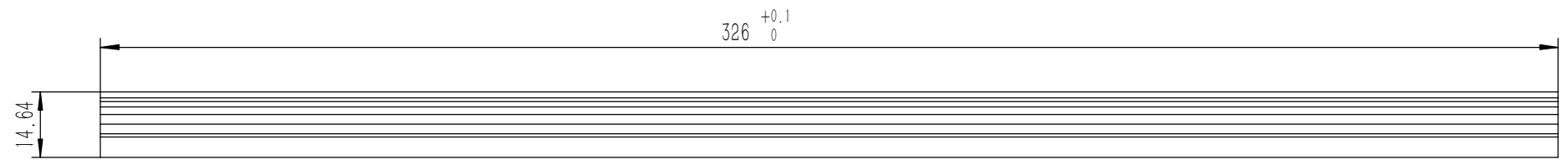
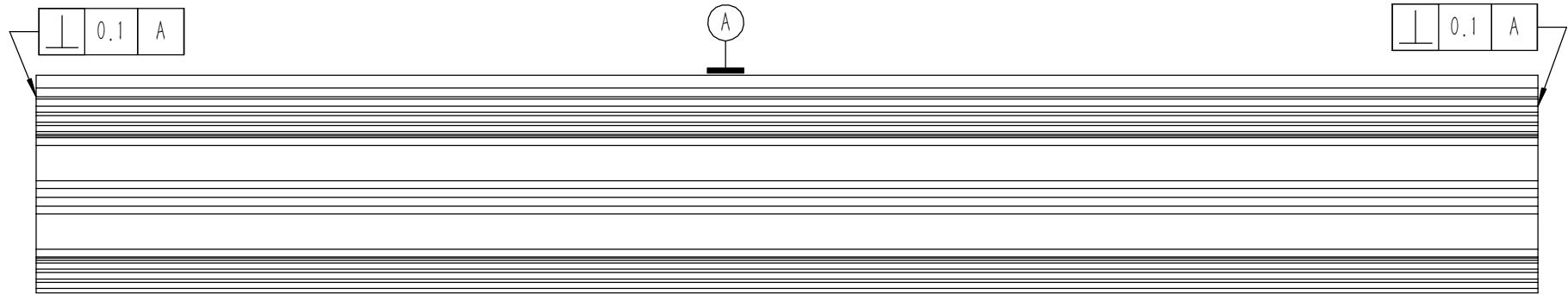
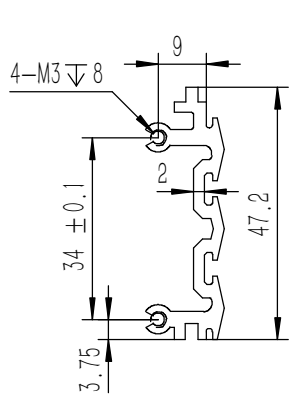
Tolerances (未注公差): 0.5 to 6 $\pm$ 0.1 6 to 30 $\pm$ 0.2 30 to 120 $\pm$ 0.3 120 to 400 $\pm$ 0.4	Material (材料): 电解板	<b>YONGU</b> 永固
	Weight: (重量) (Kg): 0.929	
Break sharp edges (未注锐边倒角): Ch 0.05 to 0.25 x45°	Protection: (表面处理):	Part Name (零/部件名称): D安装垫板
Angular tolerances (未注角度公差): <6° $\pm$ 10' <30° $\pm$ 20' <120° $\pm$ 30' >120° $\pm$ 1°	Part Name (零/部件名称):	
Position tolerances (未注位置公差): $\pm$ 0.05	Part Name (零/部件名称):	Drawing Number (图号): YG-D06-0000-004
	Drawn by (绘图): 邓展锋	Date (日期): 2020.05.22
	Check by (校对):	Date (日期):
	Signature by (批准):	Date (日期):
		Size: (图幅): A1
		Scale (比例): 1:1
		Revision (版本):
		Sheet (页数): 1 / 1



技术要求:

- 1、零件加工表面不应有划痕、擦伤等损伤零件表面的缺陷;
- 2、去除毛刺飞边, 锐角倒钝;
- 3、未标注尺寸见3D数模。

Tolerances (未注公差): 0.5 to 6 ± 0.1 6 to 30 ± 0.2 30 to 120 ± 0.3 120 to 400 ± 0.4	Material (材料):	6063-T5	<b>YONGU</b> 永固
	Weight: (重量) (Kg)	0.093	
Break sharp edges (未注锐边倒角): Ch 0.05 to 0.25 x45°	Protection: (表面处理):		Drawing Number (图号): YG-D06-0000-007
	Position tolerances (未注位置公差): ±0.05	Part Name (零/部件名称): 组合侧板	
Angular tolerances (未注角度公差): <6° ± 10' <30° ± 20' <120° ± 30' >120° ± 1°	Part Name (零/部件名称):	组合侧板	Size: (图幅): A3
	Drawn by (绘图): 莫永康	Date (日期): 2020.05.22	Scale (比例): 1:1
	Check by (校对):	Date (日期):	Revision (版本): A1
	Signature by (批准):	Date (日期):	Sheet (页数): 1 / 1



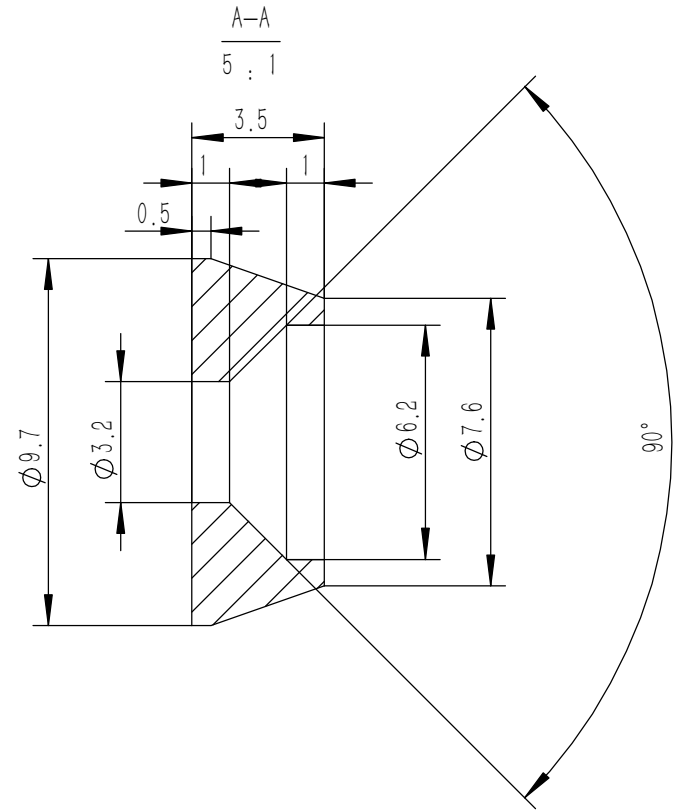
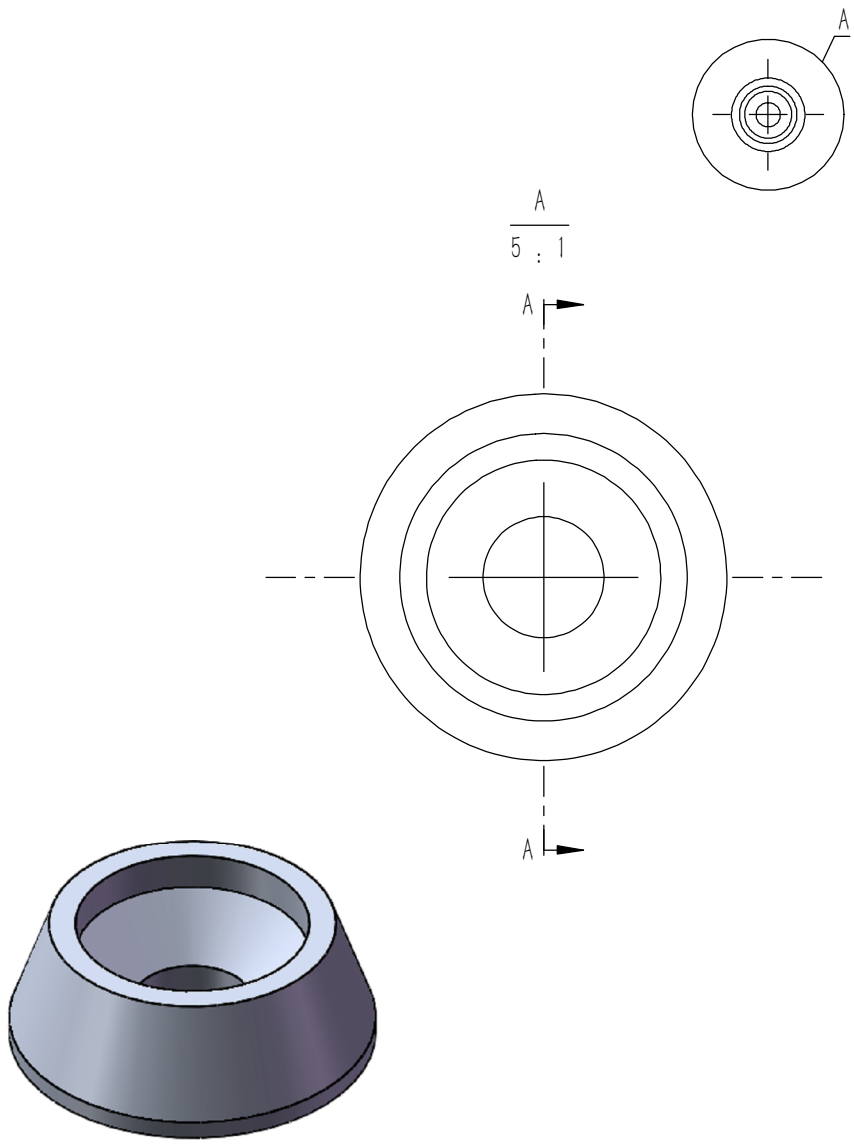
技术要求:  
 1、零件加工表面不应有划痕、擦伤等损伤零件表面的缺陷;  
 2、去除毛刺飞边,锐角倒钝;  
 3、未标注尺寸见3D数模。

Break sharp edges (未注锐边倒角): Ch 0.05 to 0.25 x45°	Angular tolerances (未注角度公差): <6° ± 10' <30° ± 20' <120° ± 30' >120° ± 1°
Position tolerances (未注位置公差): ±0.05	

Tolerances (未注公差): 0.5 to 6 ± 0.1 6 to 30 ± 0.2 30 to 120 ± 0.3 120 to 400 ± 0.4	Material (材料): 6063-T5
	Weight: (重量) (Kg) 0.193
	Protection: (表面处理):

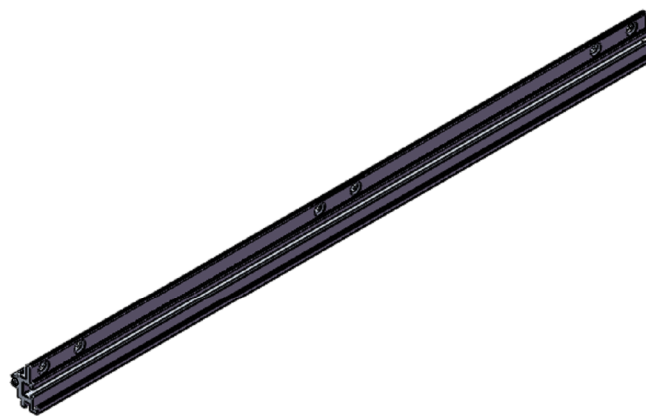
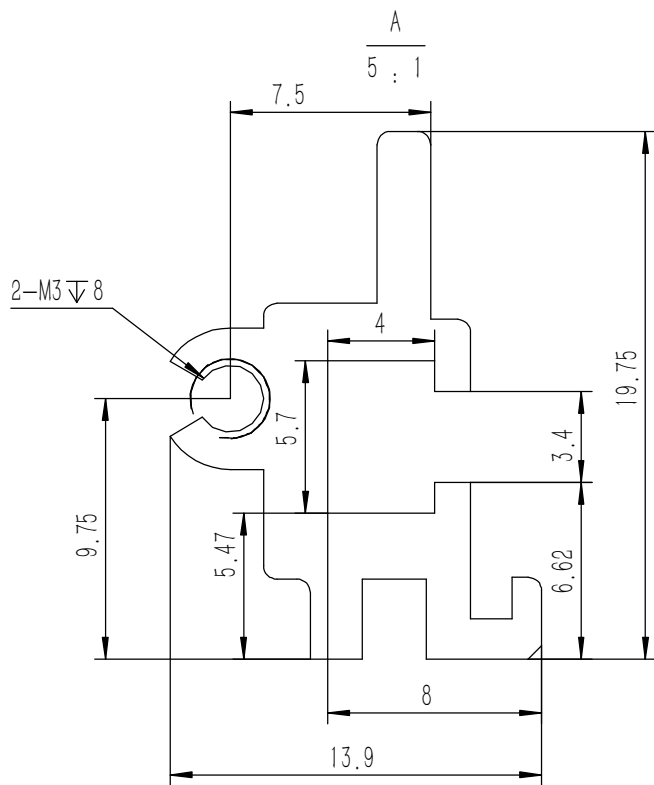
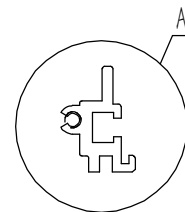
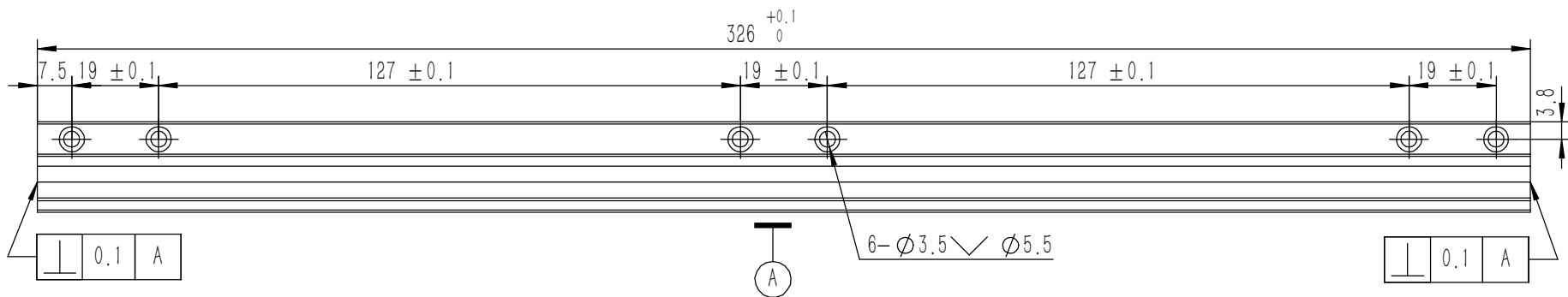
Part Name (零/部件名称): 组合侧板	
Drawn by (绘图): 莫永康	Date (日期): 2020.05.22
Check by (校对):	Date (日期):
Signature by (批准):	Date (日期):

		Drawing Number (图号): YG-D06-0000-006	
		Size (图幅): A3	
Scale (比例): 1:1		Sheet (页数): 1 / 1	
Revision (版本): A1			



技术要求:  
 1、零件加工表面不应有划痕、擦伤等损伤零件表面的缺陷;  
 2、去除毛刺飞边,锐角倒钝;  
 3、未标注尺寸见3D数模。

Tolerances (未注公差): 0.5 to 6 ± 0.1 6 to 30 ± 0.2 30 to 120 ± 0.3 120 to 400 ± 0.4	Material (材料):	5052-H32		<b>YONGU</b> 永固
	Weight: (重量) (Kg)	0.000		
Break sharp edges (未注锐边倒角): Ch 0.05 to 0.25 x45°	Protection: (表面处理):			Drawing Number (图号): YG-TY-ZSJ-001
	Position tolerances (未注位置公差): ±0.05	Part Name (零/部件名称):	螺丝装饰件 M3	
Angular tolerances (未注角度公差): <6° ± 10' <30° ± 20' <120° ± 30' >120° ± 1°	Drawn by (绘图):	莫永康	Date (日期):	2020.05.22
	Check by (校对):		Date (日期):	
	Signature by (批准):		Date (日期):	
		Scale (比例):	1:1	
		Revision (版本):	A1	
		Sheet (页数):	1 / 1	



- 技术要求:
- 1、零件加工表面不应有划痕、擦伤等损伤零件表面的缺陷;
  - 2、去除毛刺飞边, 锐角倒钝;
  - 3、未标注尺寸见3D数模。

Tolerances (未注公差): 0.5 to 6 $\pm 0.1$ 6 to 30 $\pm 0.2$ 30 to 120 $\pm 0.3$ 120 to 400 $\pm 0.4$	Material (材料): 6063-T5	<b>YONGU</b> 永固
	Weight: (重量) (Kg) 0.079	
Break sharp edges (未注锐边倒角): Ch 0.05 to 0.25 x45°	Protection: (表面处理):	Part Name (零/部件名称): 组合侧板
Angular tolerances (未注角度公差): <6° $\pm 10'$ <30° $\pm 20'$ <120° $\pm 30'$ >120° $\pm 1^\circ$	Part Name (零/部件名称): 组合侧板	Drawing Number (图号): YG-D06-0000-005
Position tolerances (未注位置公差): $\pm 0.05$	Drawn by (绘图): 莫永康	Date (日期): 2020.05.22
	Check by (校对):	Date (日期):
	Signature by (批准):	Date (日期):
	Scale (比例): 1:1	Sheet (页数): 1 / 1
	Revision (版本): A1	