

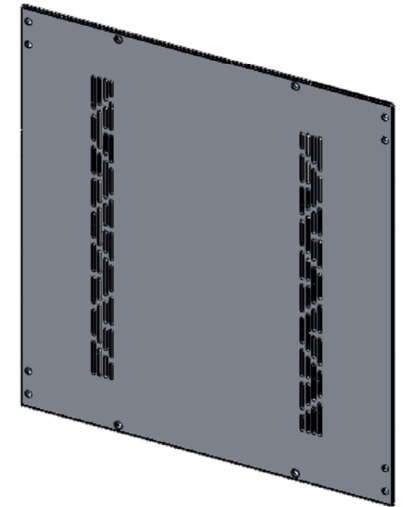
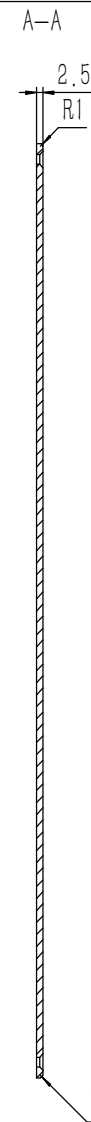
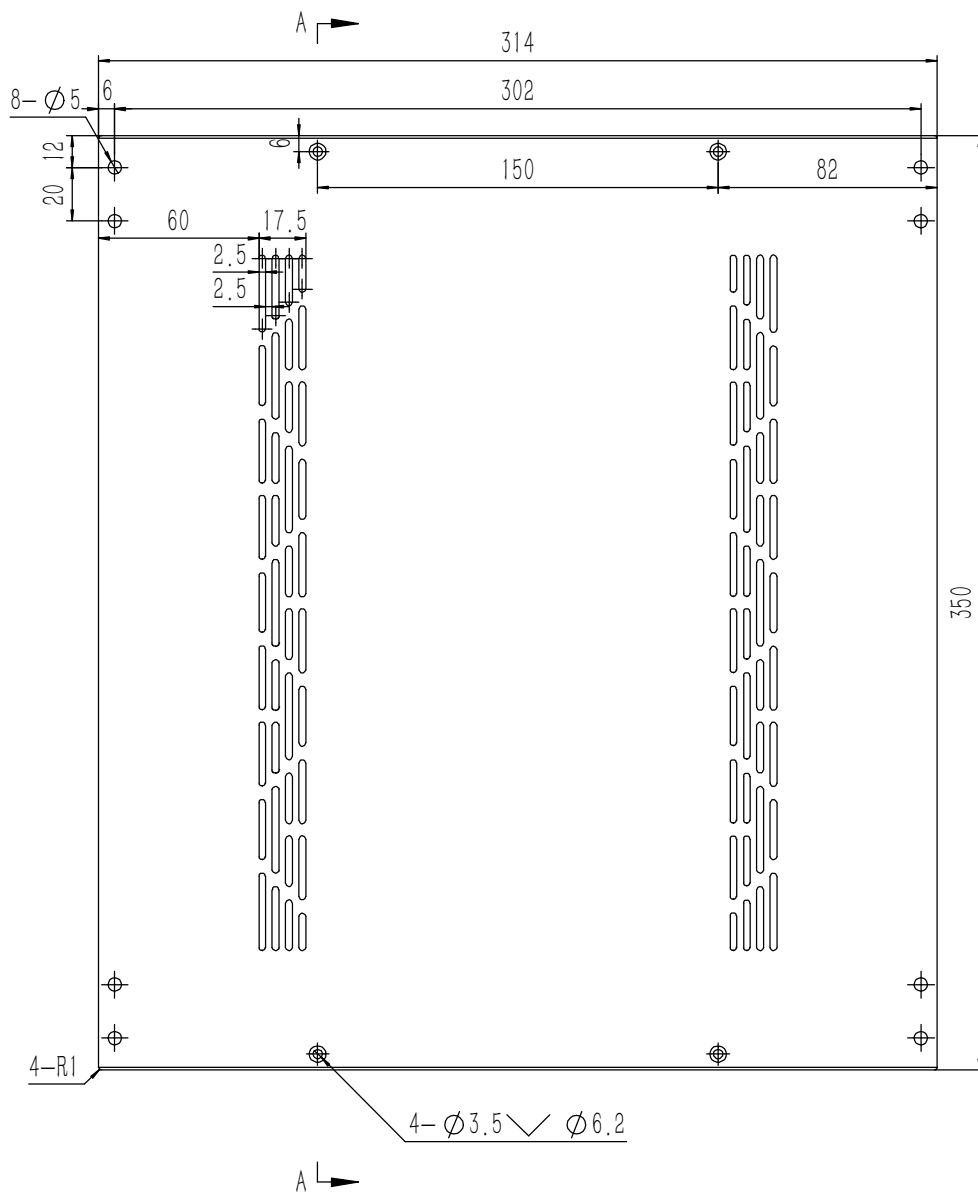
21	DN-9250-S-NL-M3	不锈钢防松垫圈	SUS 304	8	0.000	
20	YG-TY-A13-007	A垫板	5052-H32	1	0.410	
19	YG-TY-XJD-001	自粘胶垫35X11X3	硅橡胶	8	0.0013	
18	GB-T-70.3-2000-C-NI-M3X6	芳生镀白镍内六角沉头螺丝M3X6	普通碳钢	8	0.0004	
17	YG-TY-A08-002	A侧板固定件115H	6063-T5	4	0.041	
16	YG-TY-A07-002	后防护条-115H	5052-H32	2	0.048	
15	YG-TY-A12-006	前后面板-115H	5052-H32	2	0.616	
14	GB-T-973-1976-C-NI-M3X12	碳钢镀镍十字大扁头螺丝M3X12	普通碳钢	16	0.001	
13	S-M3-1-ZI	压铆螺母镀锌M3X1	普通碳钢	8	0.3750	
12	GB-T-973-1976-C-NI-M3X6	碳钢镀镍十字大扁头螺丝M3X6	普通碳钢	16	0.0006	
11	BSO-M3-5-ZI-D5.4	压铆螺母 M3X5	普通碳钢	8	0.001	
10	GB-T-973-1976-C-NI-M3X4	碳钢镀镍十字大扁头螺丝M3X4	普通碳钢	34	0.0005	
9	YG-TY-B01-007	上下盖板	5052-H32	1	0.735	
8	YG-TY-B05-002	B包角2	6063-T5	4	0.035	
7	YG-TY-A11-002	面板下固定件2	电解板	2	0.056	
6	YG-TY-A06-002	拉手-115H	6063-T5	2	0.092	
5	YG-TY-A10-002	面板上固定件2	电解板	2	0.049	
4	YG-TY-B05-001	B包角1	6063-T5	4	0.035	
3	YG-TY-A09-002	侧板连接件	电解板	4	0.030	
2	YG-TY-B03-002	B组合侧板	6063-T5	6	0.161	
1	YG-TY-B02-007	上盖板	5052-H32	1	0.706	
序号	图号	名称	材料	数量	单重	备注

技术要求:

- 1、必须按照设计、工艺要求及本规定和有关标准进行装配;
- 2、所有零部件(包括外购、外协件)必须具有检验合格证方能进行装配;
- 3、零件在装配前必须清理和清洗干净,不得有毛刺、飞边、氧化皮、锈蚀、切屑、砂粒、灰尘和油污等,并应符合相应清洁度要求;
- 4、装配过程中零件不得磕碰、划伤和锈蚀;
- 5、油漆未干的零件不得进行装配;
- 6、相对运动的零件,装配时接触面间应加润滑油脂;
- 7、各零、部件装配后相对位置应准确。

Break sharp edges (未注锐边倒角): Ch 0.05 to 0.25 x45°	Angular tolerances (未注角度公差): <6° ± 10' <30° ± 20' <120° ± 30' >120° ± 1°
Position tolerances (未注位置公差): ± 0.05	

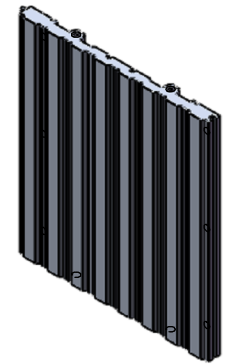
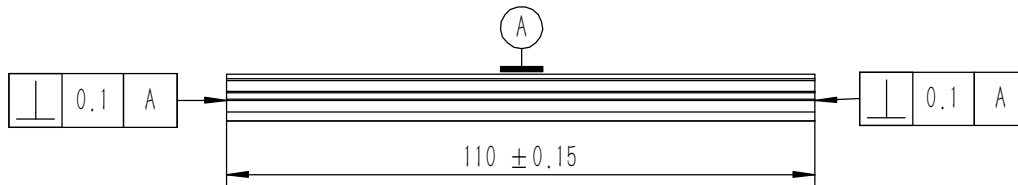
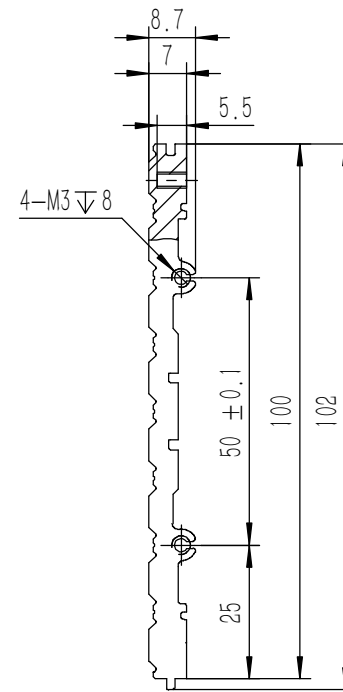
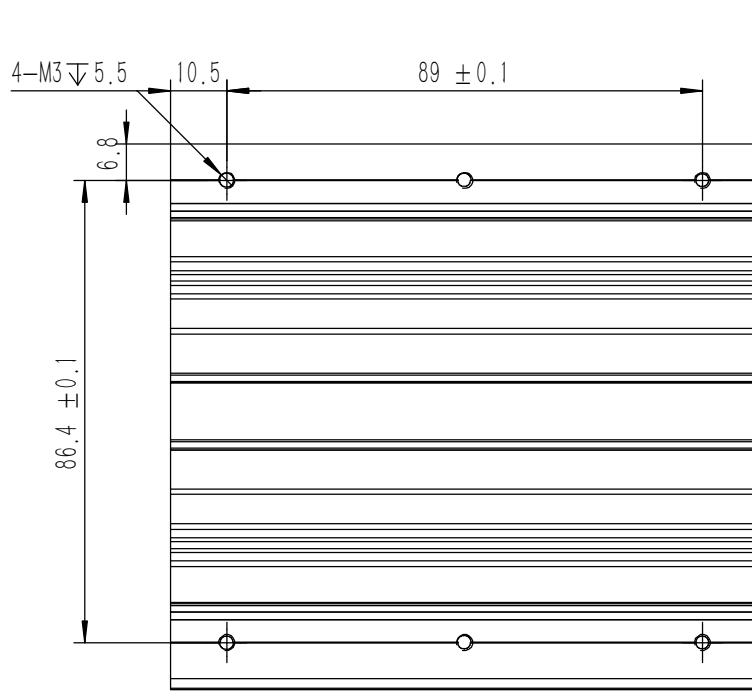
Tolerances (未注公差): 0.5 to 6 ± 0.1 6 to 30 ± 0.2 30 to 120 ± 0.3 120 to 400 ± 0.4	Material (材料): (装配图)	YONGU 永固
Weight: (重量) (Kg): 5.167	Protection: (表面处理):	
Part Name (零/部件名称):	B06机箱	Drawing Number (图号): YG-B06-1000-000
Drawn by (绘图): 邓展锋	Date (日期): 2020.05.22	Size (图幅): A0
Check by (校对):	Date (日期):	Scale (比例): 1:1.2
Signature by (批准):	Date (日期):	Revision (版本): A1
		Sheet (页数): 1 / 1



技术要求:

- 1、零件加工表面不应有划痕、擦伤等损伤零件表面的缺陷;
- 2、去除毛刺飞边,锐角倒钝;
- 3、未标注尺寸见3D数模。

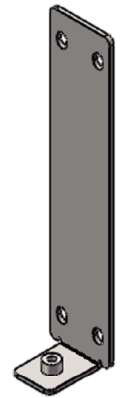
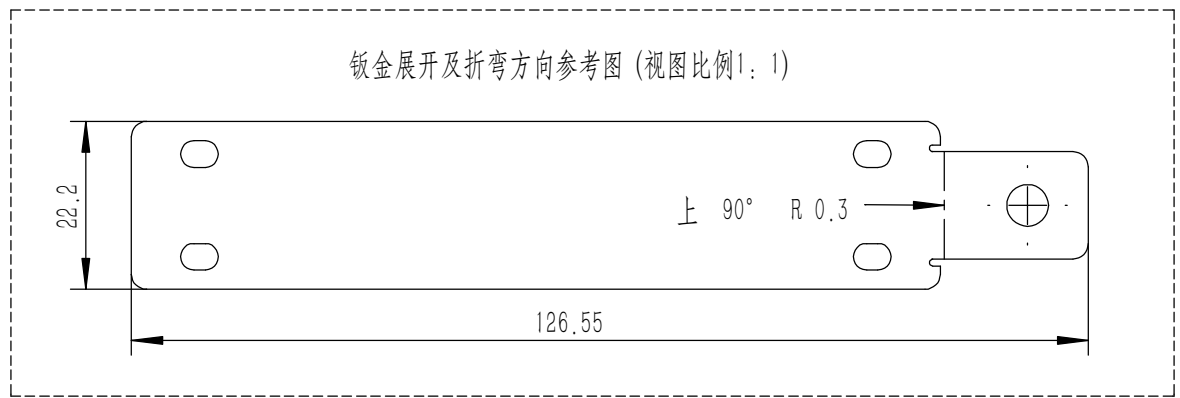
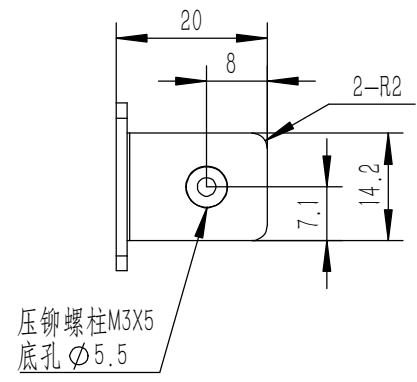
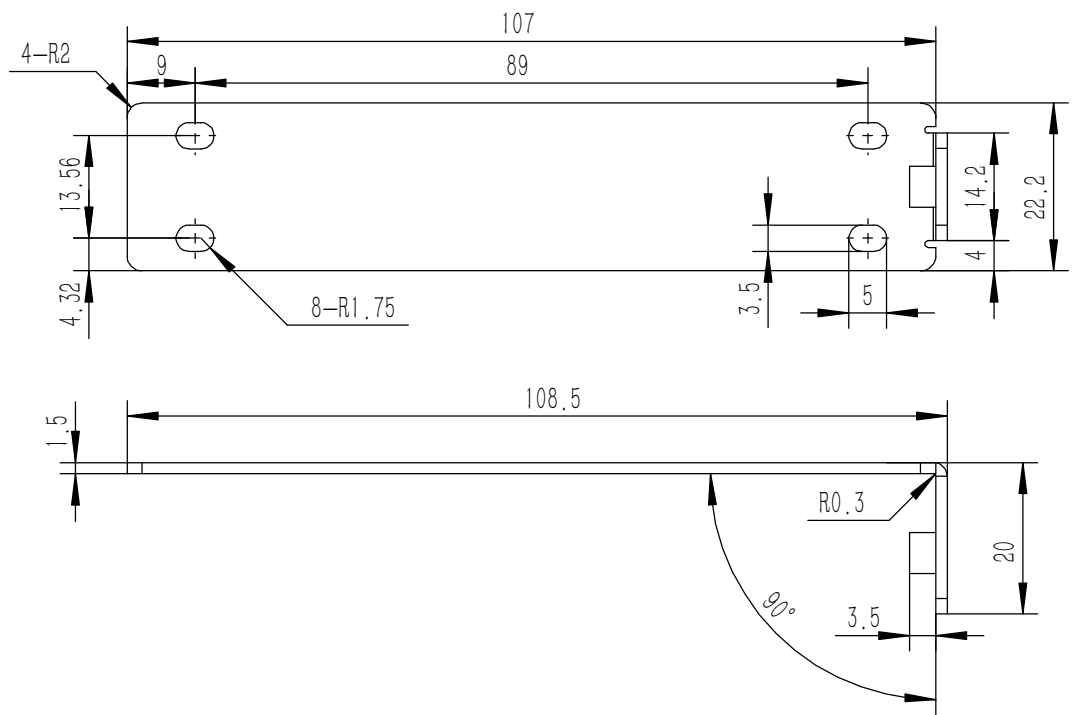
Tolerances (未注公差): 0.5 to 6 ± 0.1 6 to 30 ± 0.2 30 to 120 ± 0.3 120 to 400 ± 0.4	Material (材料):	5052-H32		YONGU 永固	
	Weight: (重量) (Kg):	0.706			
Break sharp edges (未注锐边倒角): Ch 0.05 to 0.25 x45°	Protection: (表面处理):			Drawing Number (图号): YG-TY-B02-007	
	Position tolerances (未注位置公差): ±0.05	Part Name (零/部件名称):	上盖板		
Angular tolerances (未注角度公差): <6° ± 10' <30° ± 20' <120° ± 30' >120° ± 1°	Drawn by (绘图):	邓展锋	Date (日期):	2020.05.18	Size: (图幅): A1
	Signature by (批准):		Date (日期):		
			Date (日期):		Revision (版本): A1
					Sheet (页数): 1 / 1



技术要求:

- 1、零件加工表面不应有划痕、擦伤等损伤零件表面的缺陷;
- 2、去除毛刺飞边,锐角倒钝;
- 3、未标注尺寸见3D数模。

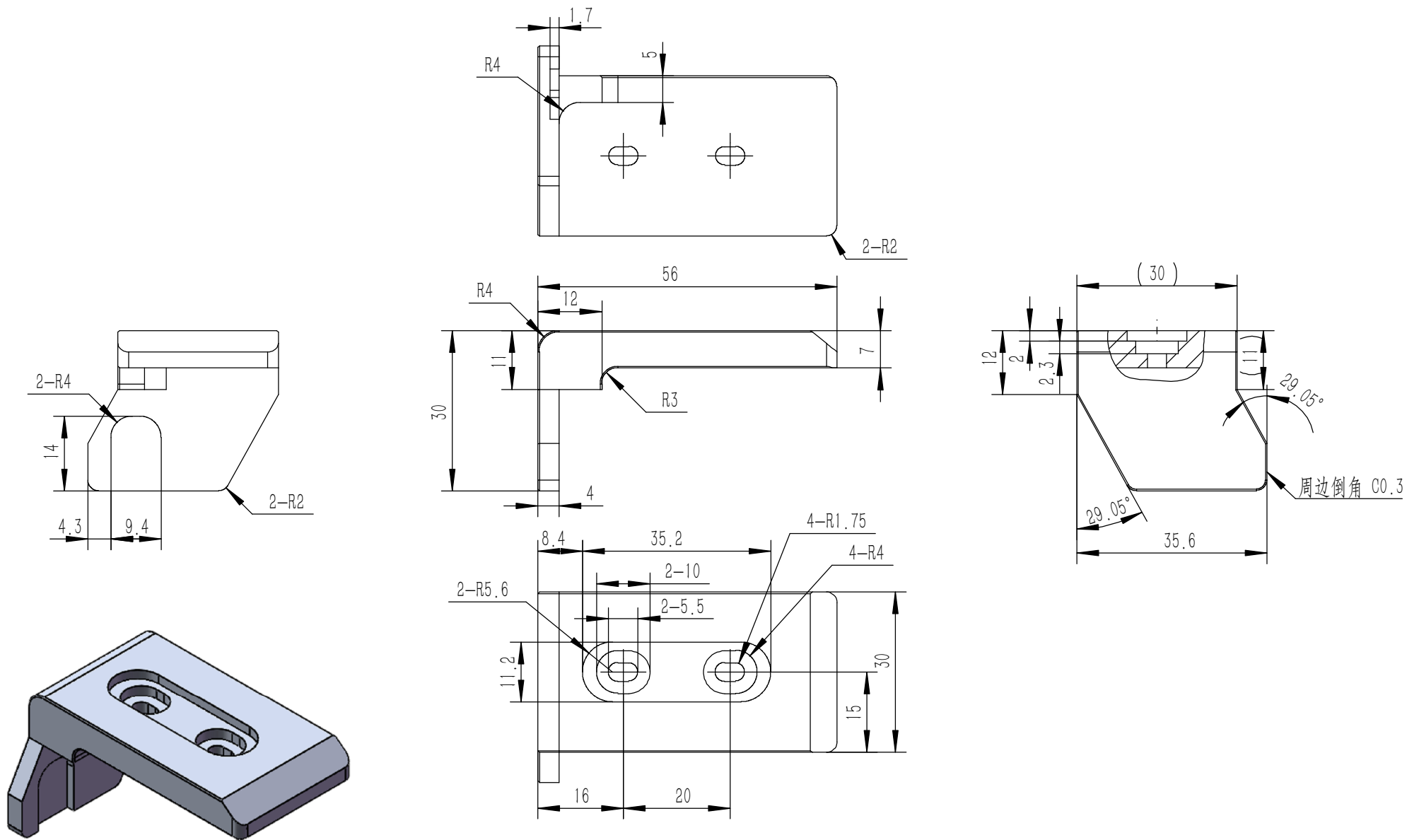
Tolerances (未注公差): 0.5 to 6 ± 0.1 6 to 30 ± 0.2 30 to 120 ± 0.3 120 to 400 ± 0.4	Material (材料):	6063-T5		YONGU
	Weight: (重量) (Kg)	0.161		
Break sharp edges (未注锐边倒角): Ch 0.05 to 0.25 x45°	Protection: (表面处理):			Drawing Number (图号): YG-TY-B03-002
	Position tolerances (未注位置公差): ±0.05	Part Name (零/部件名称): B组合侧板		
Angular tolerances (未注角度公差): <6° ± 10' <30° ± 20' <120° ± 30' >120° ± 1°	Drawn by (绘图):	邓展锋	Date (日期): 2020.05.19	Size (图幅): A3
	Signature by (批准):		Date (日期):	Scale (比例): 1:1
			Date (日期):	Revision (版本): A1
				Sheet (页数): 1 / 1



技术要求:
 1、零件加工表面不应有划痕、擦伤等损伤零件表面的缺陷;
 2、去除毛刺飞边, 锐角倒钝;
 3、未标注尺寸见3D数模。

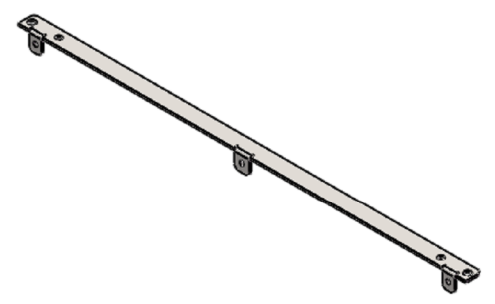
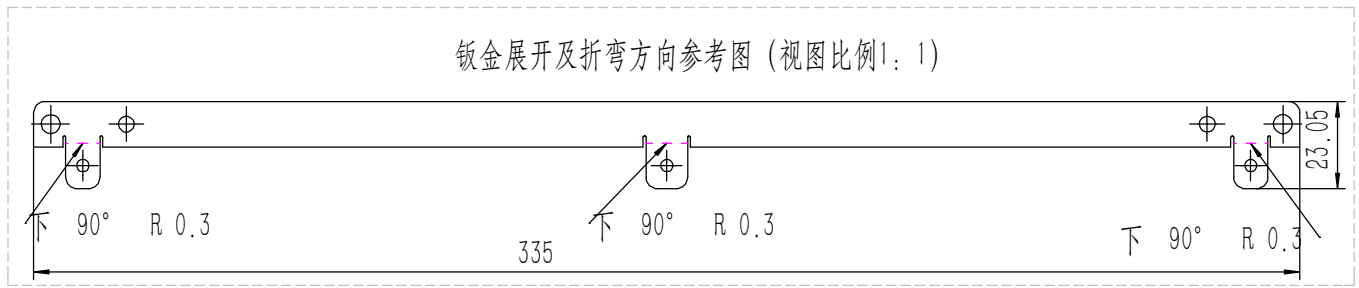
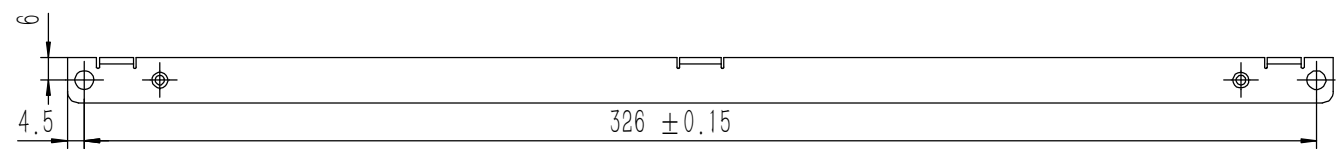
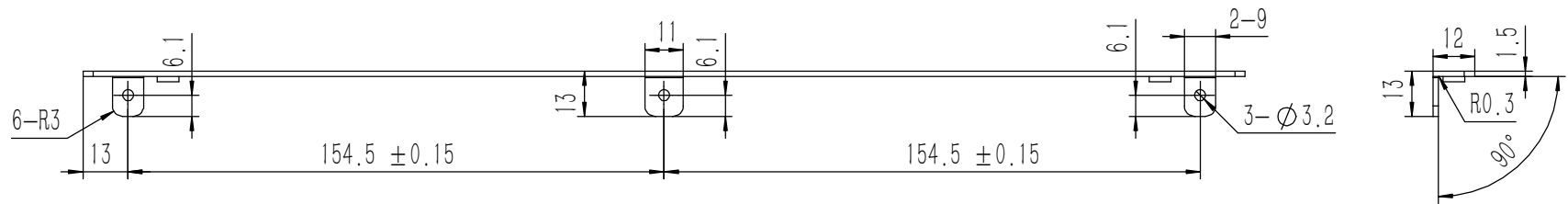
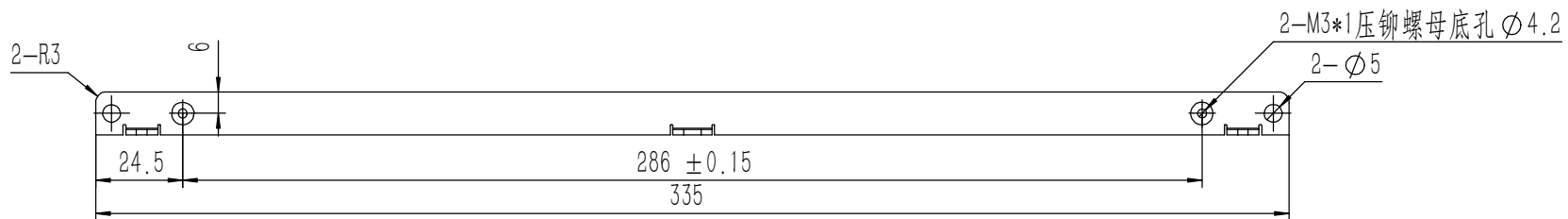
Tolerances (未注公差): 0.5 to 6 ± 0.1 6 to 30 ± 0.2 30 to 120 ± 0.3 120 to 400 ± 0.4	Material (材料):	电解板	
	Weight: (重量) (Kg)	0.031	
Break sharp edges (未注锐边倒角): Ch 0.05 to 0.25 x45° Position tolerances (未注位置公差): ±0.05	Protection: (表面处理):		
	Angular tolerances (未注角度公差): <6° ± 10' <30° ± 20' <120° ± 30' >120° ± 1°	Part Name (零/部件名称):	侧板连接件 115H
	Material (材料):	电解板	Drawing Number (图号): YG-TY-A09-002
	Weight: (重量) (Kg)	0.031	
	Protection: (表面处理):		Size: (图幅): A4
	Part Name (零/部件名称):	侧板连接件 115H	
	Drawn by (绘图): 莫永康	Date (日期): 2020.05.19	Scale (比例): 1:1
	Check by (校对):	Date (日期):	
	Signature by (批准):	Date (日期):	Sheet (页数): 1 / 1
			Revision (版本): A1





- 技术要求:
- 1、零件加工表面不应有划痕、擦伤等损伤零件表面的缺陷;
 - 2、去除毛刺飞边, 锐角倒钝;
 - 3、未标注尺寸见3D数模。

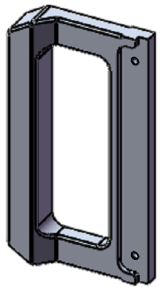
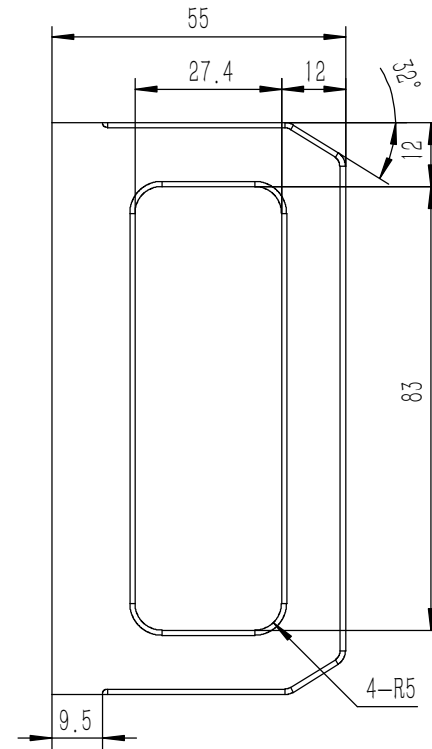
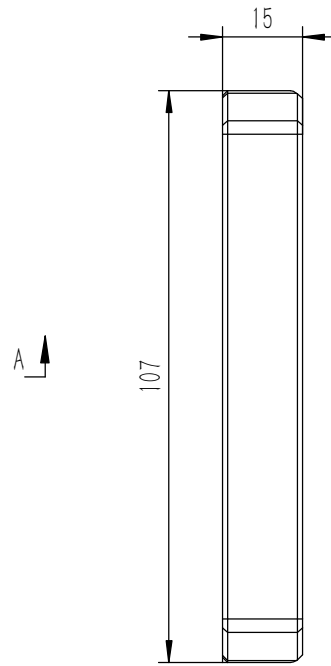
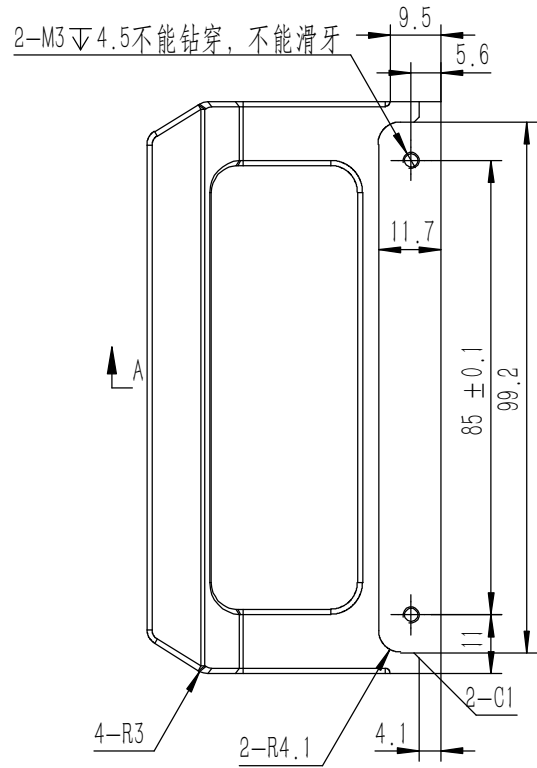
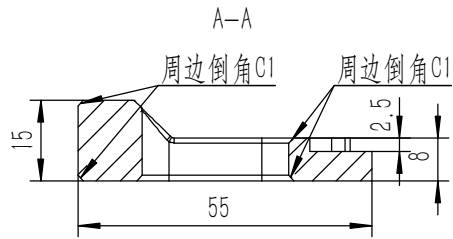
Tolerances (未注公差): 0.5 to 6 ± 0.1 6 to 30 ± 0.2 30 to 120 ± 0.3 120 to 400 ± 0.4	Material (材料):	6063-T5	YONGU 永固
	Weight: (重量) (Kg)	0.035	
Break sharp edges (未注锐边倒角): Ch 0.05 to 0.25 x45°	Protection: (表面处理):		Drawing Number (图号): YG-TY-B05-001
	Position tolerances (未注位置公差): ±0.05	Part Name (零/部件名称): B包角1	
Angular tolerances (未注角度公差): <6° ± 10' <30° ± 20' <120° ± 30' >120° ± 1°	Drawn by (绘图):	Date (日期): 2020.05.18	Size: (图幅): A4
	Check by (校对):	Date (日期):	Scale (比例): 1:1
	Signature by (批准):	Date (日期):	Revision (版本): A1
			Sheet (页数): 1 / 1



业务代码:

- 技术要求:
- 1、零件加工表面不应有划痕、擦伤等损伤零件表面的缺陷;
 - 2、去除毛刺飞边, 锐角倒钝;
 - 3、未标注尺寸见3D数模。

Tolerances (未注公差): 0.5 to 6 ± 0.1 6 to 30 ± 0.2 30 to 120 ± 0.3 120 to 400 ± 0.4	Material (材料): 电解板	YONGU 永固	Drawing Number (图号): YG-TY-A10-002
	Weight: (重量) (Kg): 0.050		
Break sharp edges (未注锐边倒角): Ch 0.05 to 0.25 x45°	Protection: (表面处理): 毛坯	面板上固定件2	Size: (图幅): A2
	Part Name (零/部件名称):		
Position tolerances (未注位置公差): ±0.05	Angular tolerances (未注角度公差): <6° ± 10' <30° ± 20' <120° ± 30' >120° ± 1°	Drawn by (绘图): 许宏彬	Date (日期): 2020.09.18
		Check by (校对):	Date (日期):
		Signature by (批准):	Date (日期):
			Scale (比例): 1:1
			Revision (版本): A1
			Sheet (页数): 1 / 1

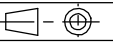


技术要求:

- 1、零件加工表面不应有划痕、擦伤等损伤零件表面的缺陷;
- 2、去除毛刺飞边, 锐角倒钝;
- 3、未标注尺寸见3D数模。

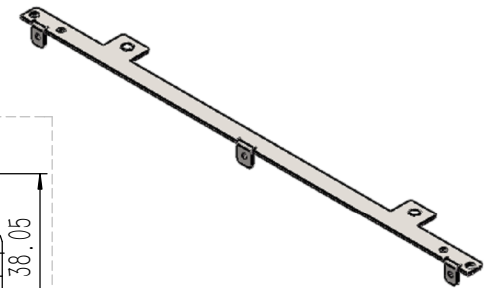
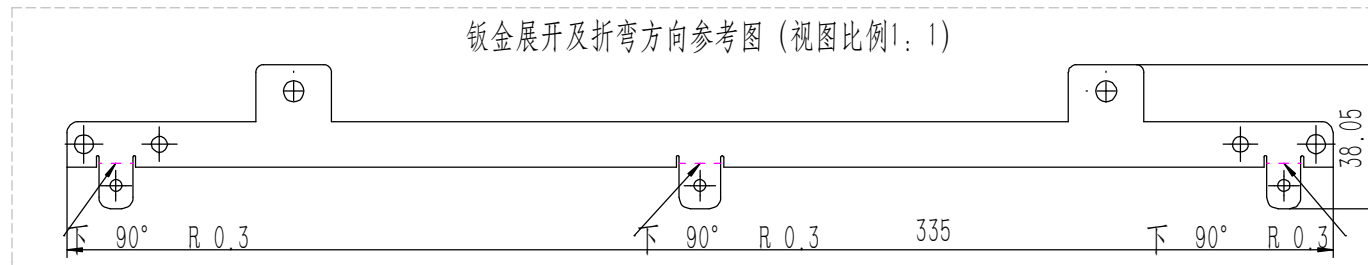
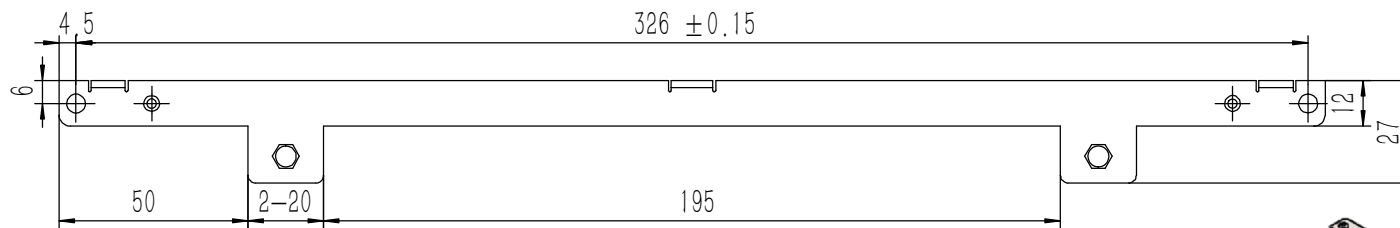
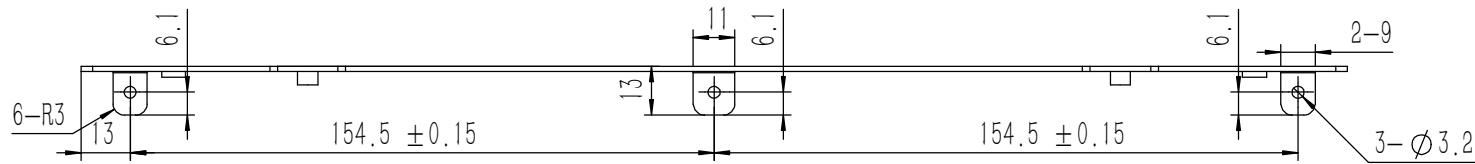
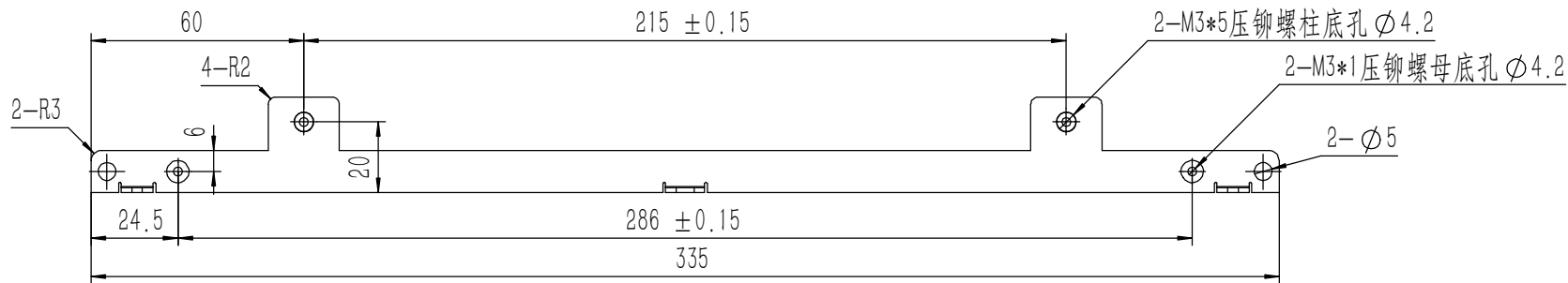
Tolerances (未注公差): 0.5 to 6 ± 0.1 6 to 30 ± 0.2 30 to 120 ± 0.3 120 to 400 ± 0.4	Material (材料):	6063-T5	
	Weight: (重量) (Kg)	0.092	
Break sharp edges (未注锐边倒角): Ch 0.05 to 0.25 x45°	Protection: (表面处理):		
	Part Name (零/部件名称):	拉手-115H	
Position tolerances (未注位置公差): ±0.05	Angular tolerances (未注角度公差): <6° ± 10' <30° ± 20' <120° ± 30' >120° ± 1°	Drawing Number (图号):	YG-TY-A06-002
	Drawn by (绘图): 邓展锋	Date (日期): 2020.05.18	Size (图幅): A3
	Check by (校对):	Date (日期):	Scale (比例): 1:1
	Signature by (批准):	Date (日期):	Revision (版本): A1

YONGU 永固



Sheet (页数):

0 / 0

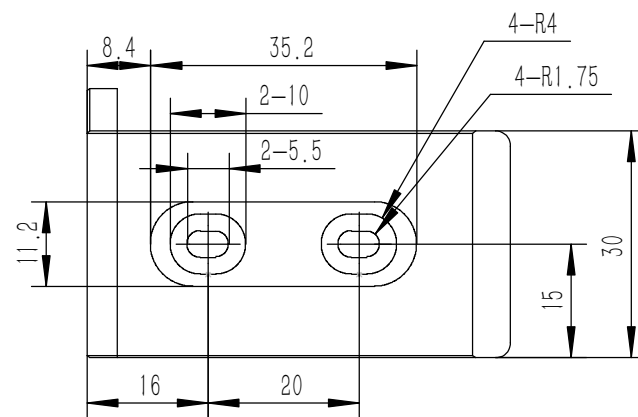
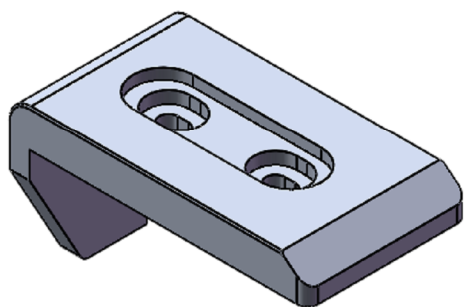
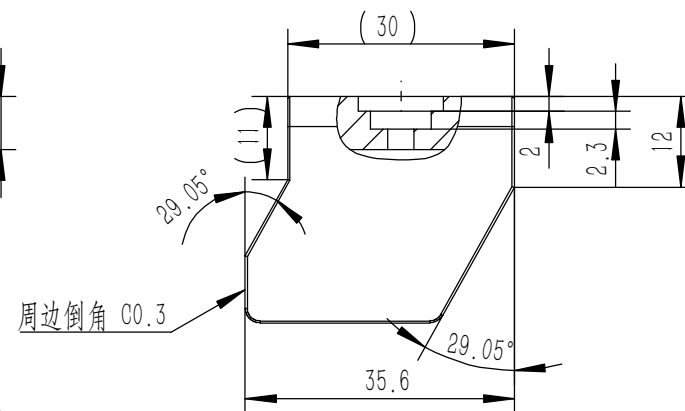
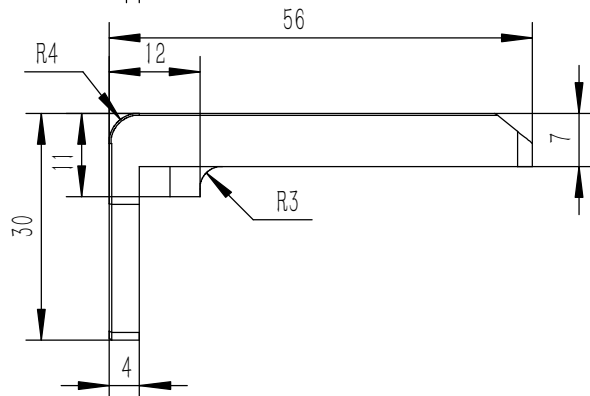
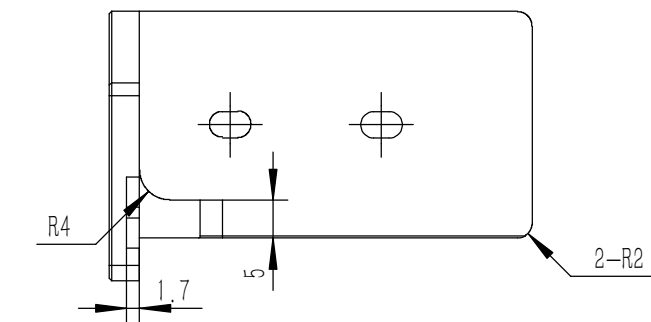
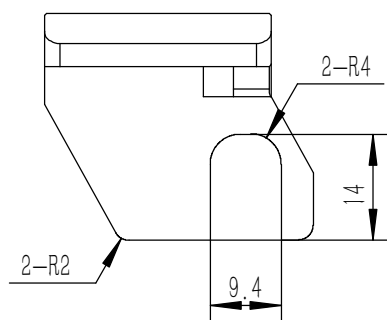


业务代码:

技术要求:

- 1、零件加工表面不应有划痕、擦伤等损伤零件表面的缺陷;
- 2、去除毛刺飞边,锐角倒钝;
- 3、未标注尺寸见3D数模。

Tolerances (未注公差): 0.5 to 6 ± 0.1 6 to 30 ± 0.2 30 to 120 ± 0.3 120 to 400 ± 0.4	Material (材料): (装配图)	YONGU 永固	Drawing Number (图号): YG-TY-A11-002	
	Weight: (重量) (Kg): 0.058		Size: (图幅): A2	
Break sharp edges (未注锐边倒角): Ch 0.05 to 0.25 x45°	Protection: (表面处理): 毛坯	Part Name (零/部件名称): 面板下固定件2	Sheet (页数): 1 / 1	
	Angular tolerances (未注角度公差): <6° ± 10' <30° ± 20' <120° ± 30' >120° ± 1°		Drawn by (绘图): 许宏彬	Date (日期): 2020.09.18
Position tolerances (未注位置公差): ±0.05	Check by (校对):	Date (日期):	Revision (版本): A1	
	Signature by (批准):	Date (日期):		



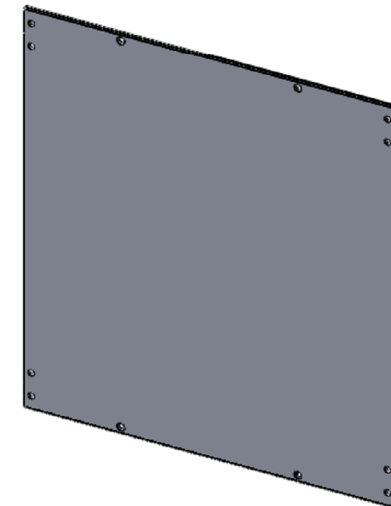
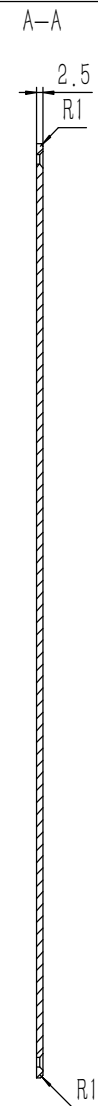
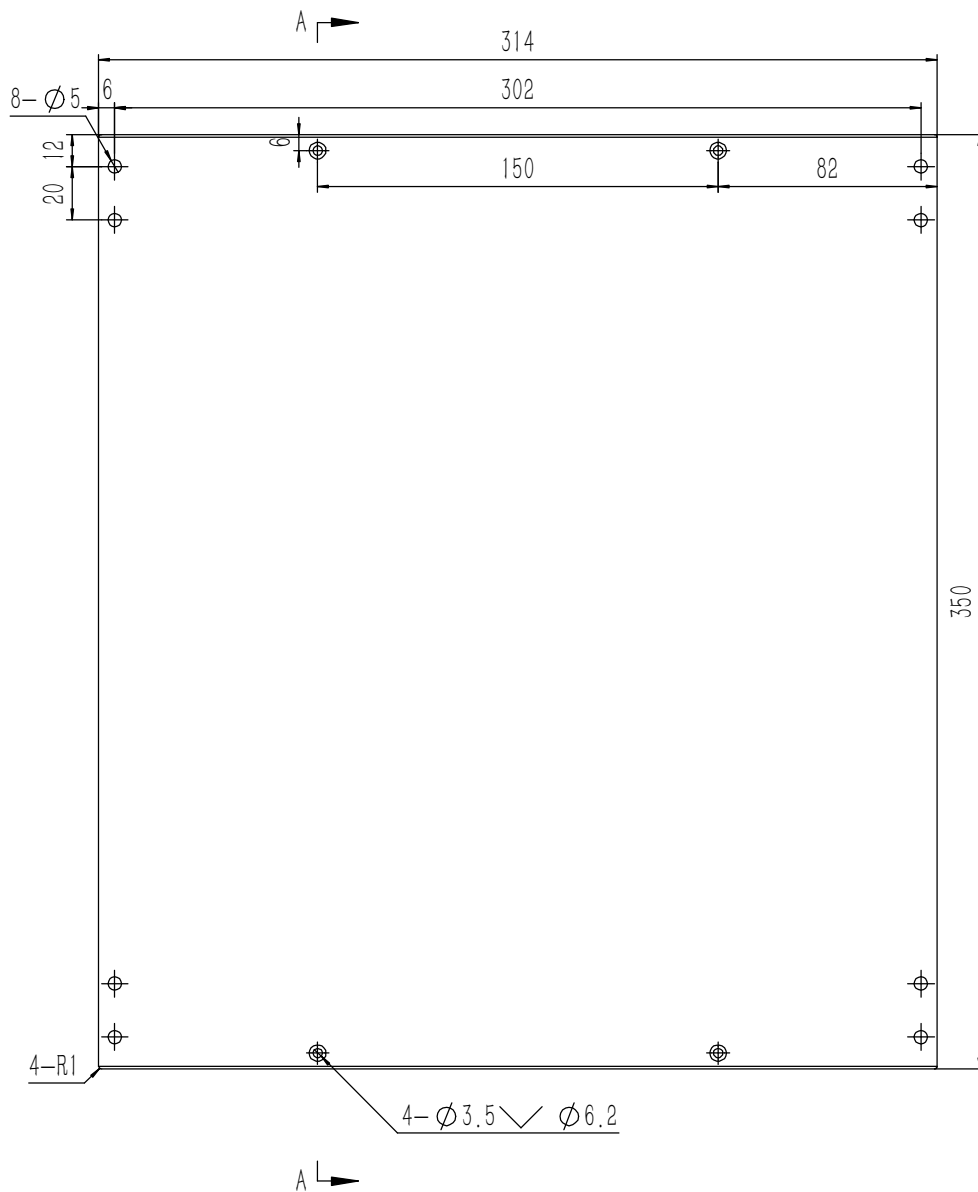
- 技术要求:
- 1、零件加工表面不应有划痕、擦伤等损伤零件表面的缺陷;
 - 2、去除毛刺飞边,锐角倒钝;
 - 3、未标注尺寸见3D数模。

Break sharp edges (未注锐边倒角): Ch 0.05 to 0.25 x45°	Angular tolerances (未注角度公差): <6° ± 10' <30° ± 20' <120° ± 30' >120° ± 1°
Position tolerances (未注位置公差): ±0.05	

Tolerances (未注公差):	Material (材料): 6063-T5
0.5 to 6 ± 0.1	Weight: (重量) (Kg) 0.035
6 to 30 ± 0.2	Protection: (表面处理):
30 to 120 ± 0.3	Part Name (零/部件名称):
120 to 400 ± 0.4	B包角2



Material (材料): 6063-T5	Drawing Number (图号): YG-TY-B05-002	
Weight: (重量) (Kg) 0.035	Size: (图幅): A4	Sheet (页数):
Protection: (表面处理):	Scale (比例): 1:1	1 / 1
Part Name (零/部件名称): B包角2	Signature by (批准):	Revision (版本): A1
Part Name (零/部件名称): B包角2	Date (日期): 2020.05.18	Date (日期):
Part Name (零/部件名称): B包角2	Date (日期):	Date (日期):



技术要求:

- 1、零件加工表面不应有划痕、擦伤等损伤零件表面的缺陷;
- 2、去除毛刺飞边, 锐角倒钝;
- 3、未标注尺寸见3D数模。

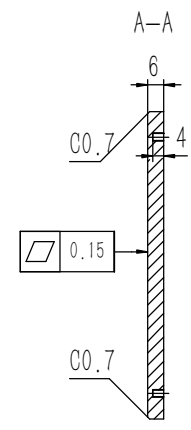
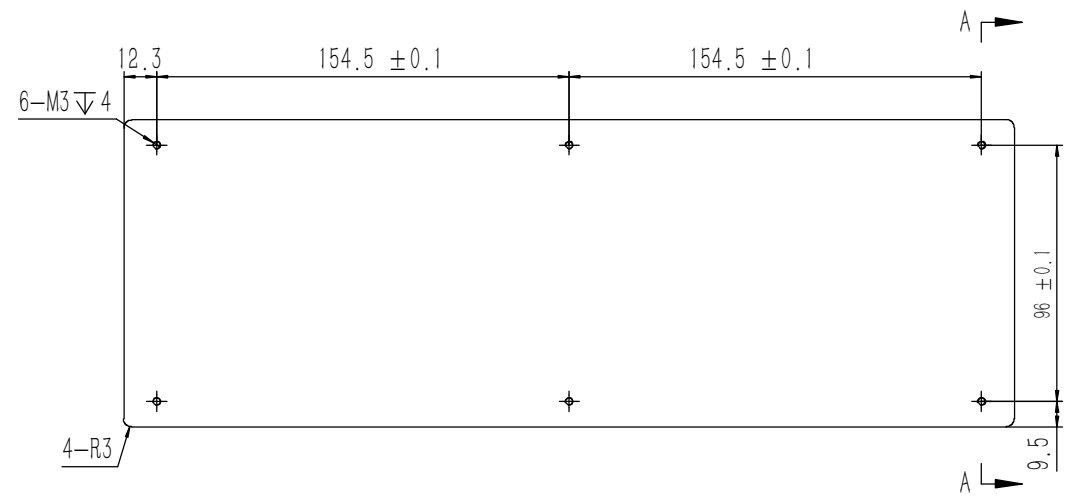
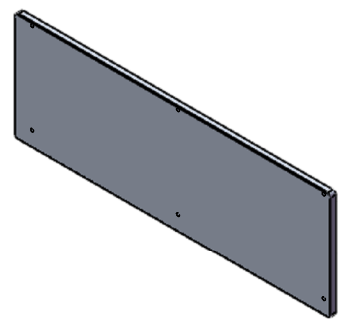
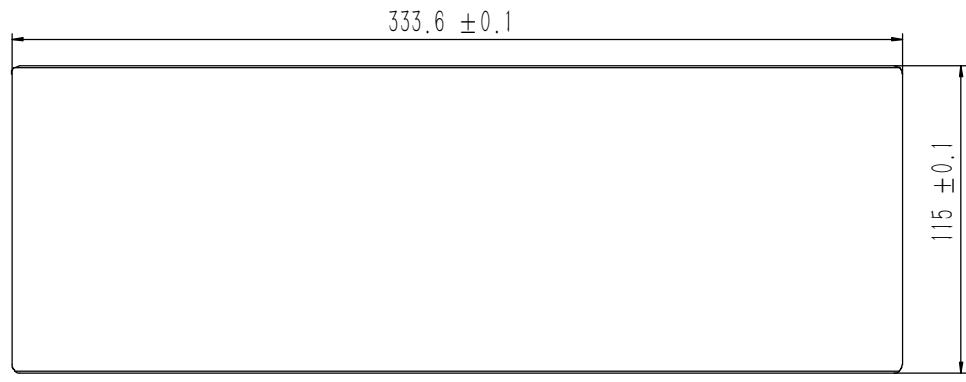
Tolerances (未注公差):	
0.5 to 6	± 0.1
6 to 30	± 0.2
30 to 120	± 0.3
120 to 400	± 0.4

Break sharp edges (未注锐边倒角): Ch 0.05 to 0.25 x45°	Angular tolerances (未注角度公差):
	<6° ± 10'
	<30° ± 20'
Position tolerances (未注位置公差): ± 0.05	<120° ± 30'
	>120° ± 1°

Material (材料):	5052-H32
Weight: (重量) (Kg):	0.735
Protection: (表面处理):	
Part Name (零/部件名称):	上下盖板



Drawing Number (图号):		YG-TY-B01-007	
Drawn by (绘图): 邓展锋	Date (日期): 2020.05.19	Size: (图幅): A1	Sheet (页数): 1 / 1
Check by (校对):	Date (日期):	Scale (比例): 1:1	
Signature by (批准):	Date (日期):	Revision (版本): A1	

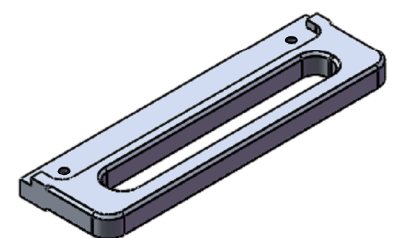
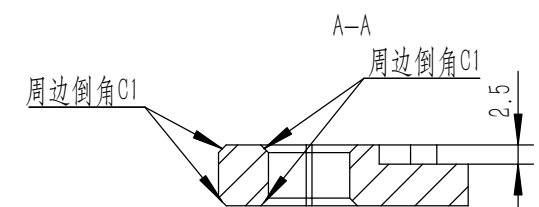
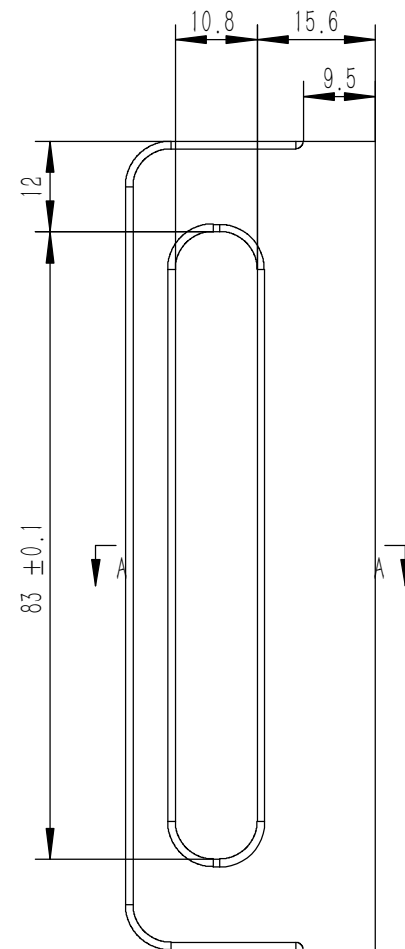
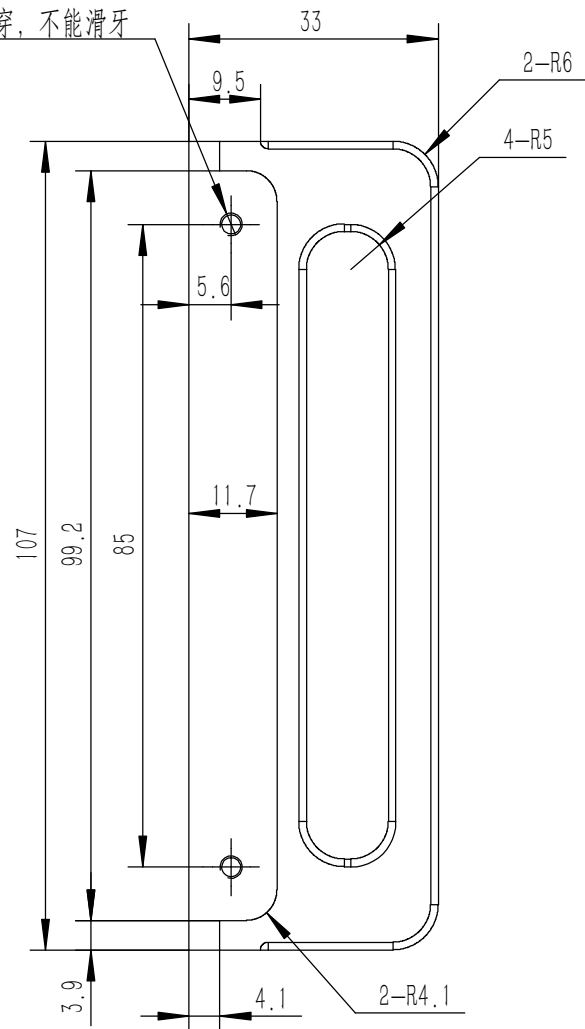


技术要求:
 1、零件加工表面不应有划痕、擦伤等损伤零件表面的缺陷;
 2、去除毛刺飞边,锐角倒钝;
 3、未标注尺寸见3D数模。

Tolerances (未注公差): 0.5 to 6 ± 0.1 6 to 30 ± 0.2 30 to 120 ± 0.3 120 to 400 ± 0.4	Material (材料):	5052-H32	
	Weight: (重量) (Kg):	0.616	
Break sharp edges (未注锐边倒角): Ch 0.05 to 0.25 x45°	Protection: (表面处理):		
	Position tolerances (未注位置公差): ± 0.05	Part Name (零/部件名称): 前后面板-115H	
Angular tolerances (未注角度公差): <6° ± 10' <30° ± 20' <120° ± 30' >120° ± 1°	Drawing Number (图号):	YG-TY-A12-006	
	Drawn by (绘图): 莫永康	Date (日期): 2020.05.18	Size: (图幅): A1
	Check by (校对):	Date (日期):	Scale (比例): 1:1
	Signature by (批准):	Date (日期):	Revision (版本): A1
			Sheet (页数): 1 / 1

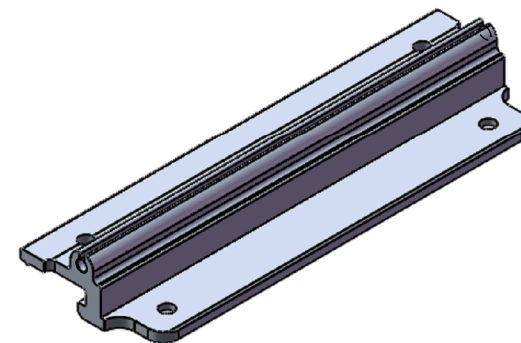
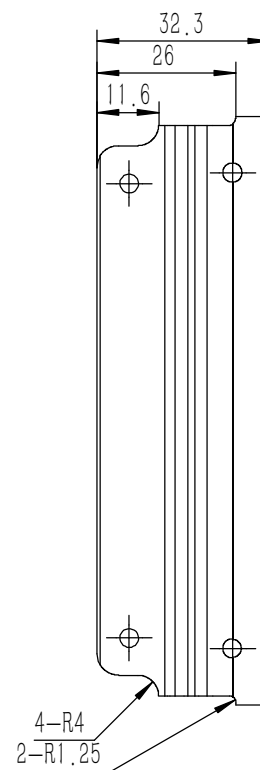
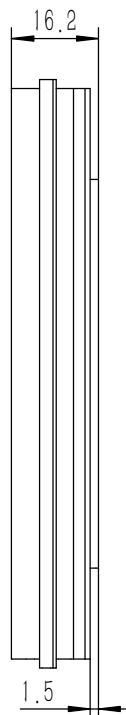
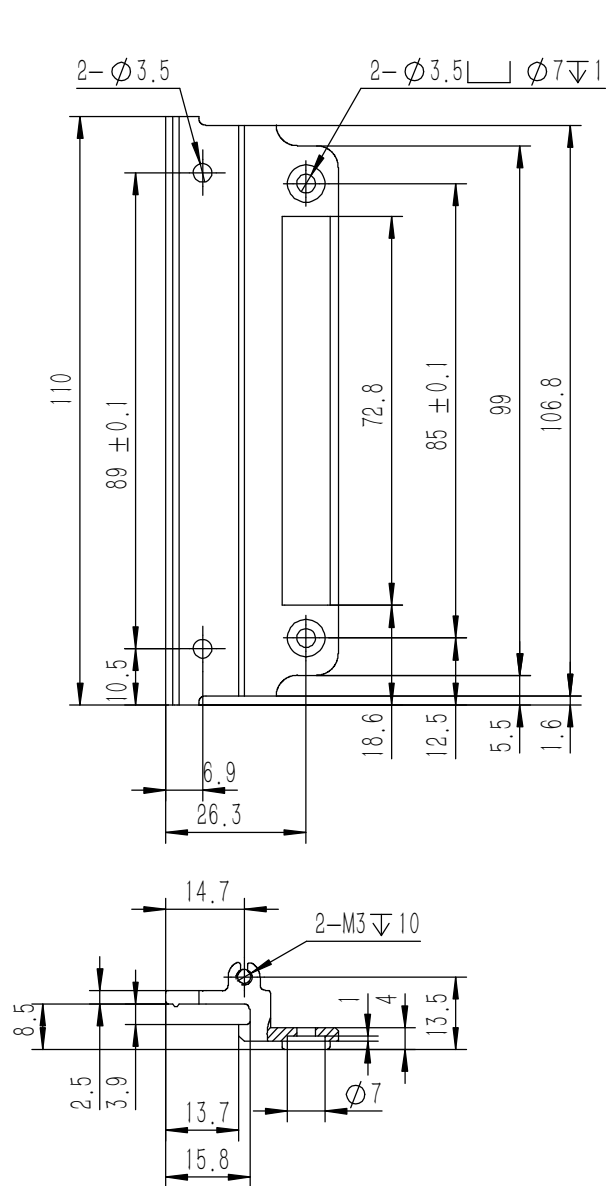


2-M3 4.5不能钻穿，不能滑牙



技术要求:
 1、零件加工表面不应有划痕、擦伤等损伤零件表面的缺陷;
 2、去除毛刺飞边, 锐角倒钝;
 3、未标注尺寸见3D数模。

Tolerances (未注公差): 0.5 to 6 ± 0.1 6 to 30 ± 0.2 30 to 120 ± 0.3 120 to 400 ± 0.4	Material (材料): 5052-H32	YONGU 永固	
	Weight: (重量) (Kg) 0.048		
Break sharp edges (未注锐边倒角): Ch 0.05 to 0.25 x45°	Protection: (表面处理):	Part Name (零/部件名称): 后防护条-115H	
	Position tolerances (未注位置公差): ±0.05	Angular tolerances (未注角度公差): <6° ± 10' <30° ± 20' <120° ± 30' >120° ± 1°	Drawing Number (图号): YG-TY-A07-002
	Drawn by (绘图): 邓展锋	Date (日期): 2020.05.18	Size: (图幅): A4
	Check by (校对):	Date (日期):	Scale (比例): 1:1
	Signature by (批准):	Date (日期):	Revision (版本): A1
			Sheet (页数): 1 / 1



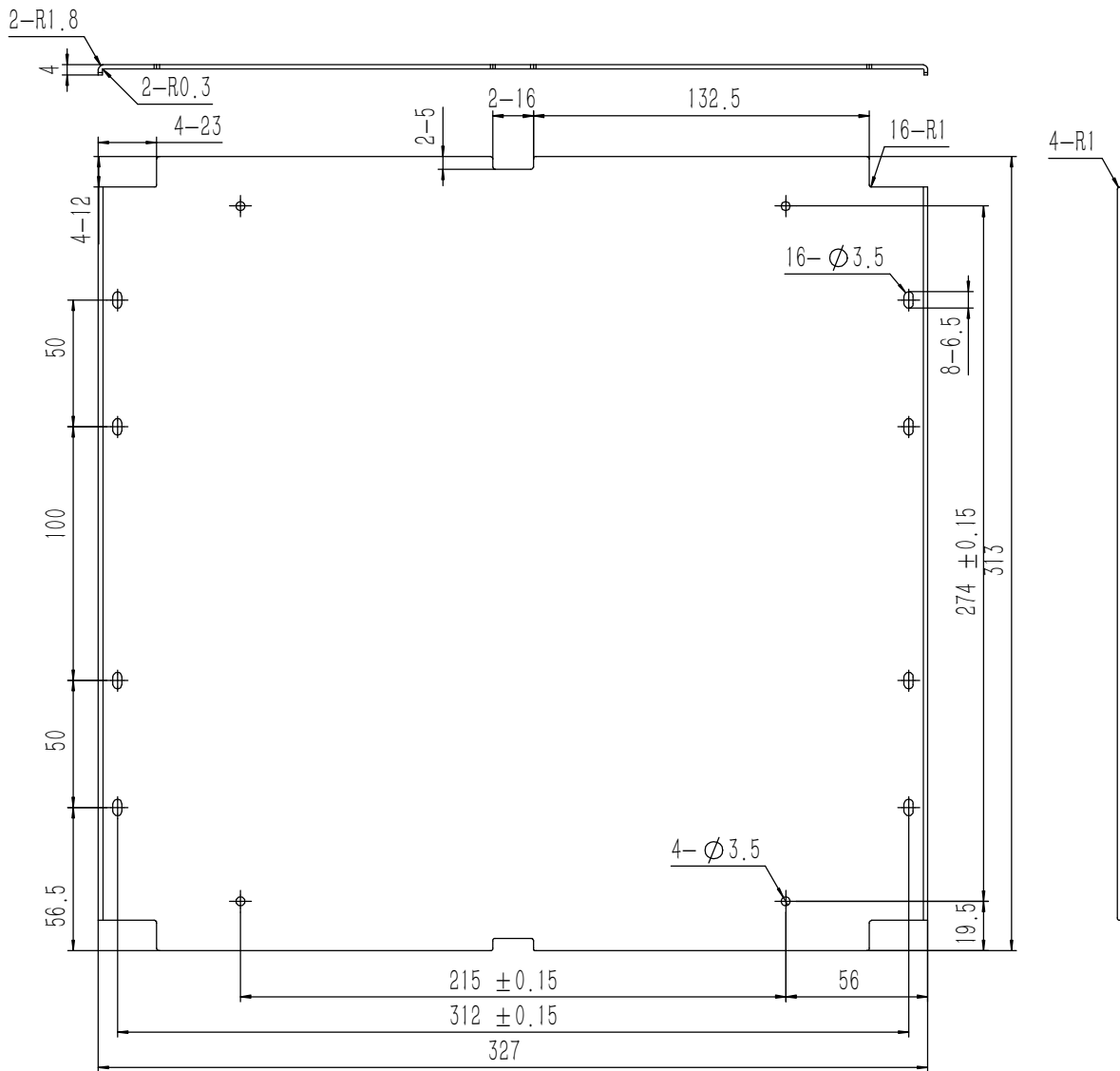
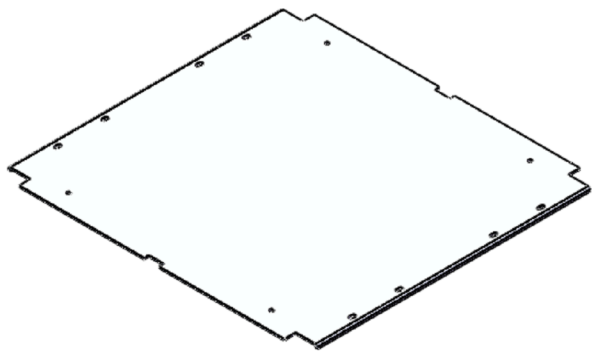
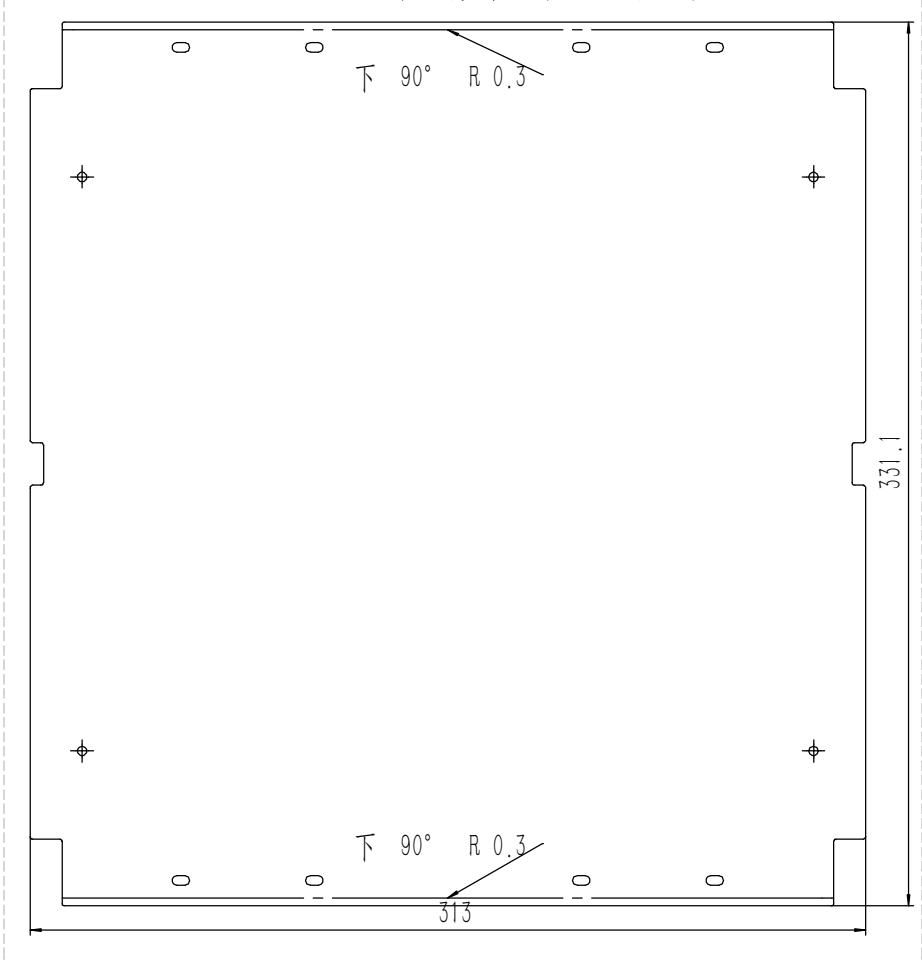
技术要求:

- 1、零件加工表面不应有划痕、擦伤等损伤零件表面的缺陷;
- 2、去除毛刺飞边, 锐角倒钝;
- 3、未标注尺寸见3D数模。

Break sharp edges (未注锐边倒角): Ch 0.05 to 0.25 x45°	Angular tolerances (未注角度公差): <6° ± 10' <30° ± 20' <120° ± 30' >120° ± 1°
Position tolerances (未注位置公差): ±0.05	

Tolerances (未注公差): 0.5 to 6 ± 0.1 6 to 30 ± 0.2 30 to 120 ± 0.3 120 to 400 ± 0.4	Material (材料): 6063-T5	YONGU 永固
	Weight: (重量) (Kg) 0.041	
	Protection: (表面处理):	
	Part Name (零/部件名称): A侧板固定件115H	Drawing Number (图号): YG-TY-A08-002
	Drawn by (绘图): 邓展锋	Date (日期): 2020.05.18
	Check by (校对):	Date (日期):
	Signature by (批准):	Date (日期):
	Size (图幅): A3	Sheet (页数): 1 / 1
	Scale (比例): 1:1	Revision (版本): A1

钣金展开及折弯方向参考图 (视图比例1:1)



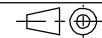
业务代码:

技术要求:

- 1、零件加工表面不应有划痕、擦伤等损伤零件表面的缺陷;
- 2、去除毛刺飞边, 锐角倒钝;
- 3、未标注尺寸见3D数模。

Break sharp edges (未注锐边倒角): Ch 0.05 to 0.25 x45°	Angular tolerances (未注角度公差): <6° ± 10' <30° ± 20' <120° ± 30' >120° ± 1°
Position tolerances (未注位置公差): ± 0.05	

Tolerances (未注公差): 0.5 to 6 ± 0.1 6 to 30 ± 0.2 30 to 120 ± 0.3 120 to 400 ± 0.4	Material (材料): 5052-H32	YONGU 永固
	Weight: (重量) (Kg): 0.410	
	Protection: (表面处理):	
	Part Name (零/部件名称): A垫板	Drawing Number (图号): YG-TY-A13-007
Drawn by (绘图): 许宏彬	Date (日期): 2020.09.17	Size: (图幅): A1
Check by (校对):	Date (日期):	Scale (比例): 1:1
Signature by (批准):	Date (日期):	Revision (版本): A1



Sheet (页数):

1 / 1