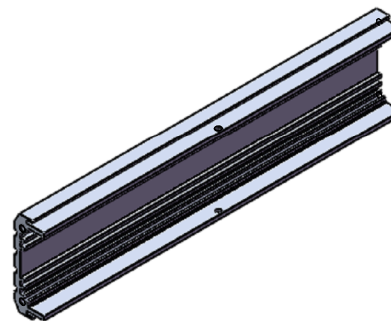
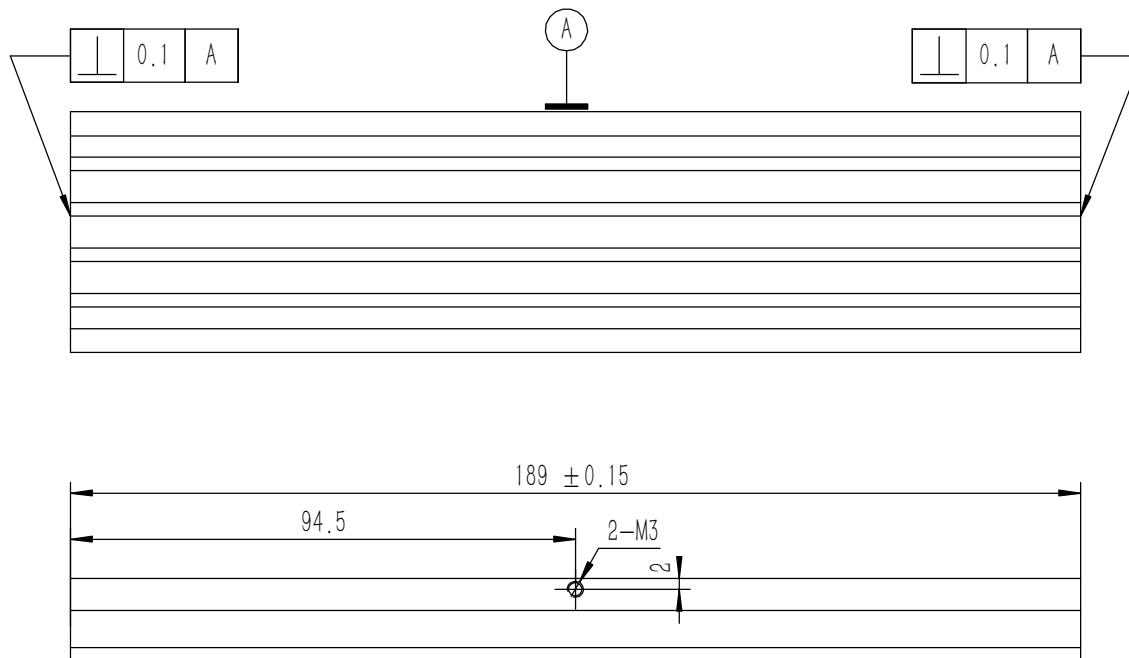
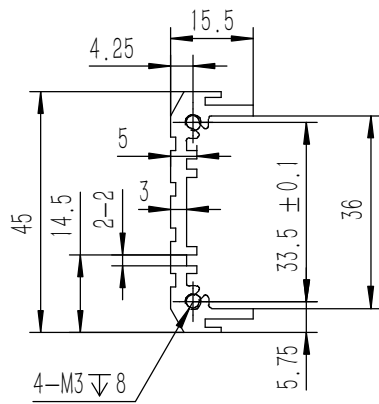


技术要求:

- 1、必须按照设计、工艺要求及本规定和有关标准进行装配;
- 2、所有零部件(包括外购、外协件)必须具有检验合格证方能进行装配;
- 3、零件在装配前必须清理和清洗干净,不得有毛刺、飞边、氧化皮、锈蚀、切屑、砂粒、灰尘和油污等,并应符合相应清洁度要求;
- 4、装配过程中零件不得磕碰、划伤和锈蚀;
- 5、油漆未干的零件不得进行装配;
- 6、相对运动的零件,装配时接触面间应加润滑油脂;
- 7、各零、部件装配后相对位置应准确。

7	GB-T-70.1-2000-S-NL-M3X8	不锈钢内六角杯头螺丝M3 X8	SUS 304	4	0.001	
6	GB-T-819.1-2000-C-BE-M3X8	碳钢发黑十字沉头螺丝M3 X8	普通碳钢	4	0.0005	
5	GB-T-819.1-2000-C-BE-M3X6	碳钢发黑十字沉头螺丝M3 X6	普通碳钢	8	0.0004	
4	YG-W26B-0000-004	盖板	5052-H32	2	0.515	
3	YG-W26B-0000-003	后面板	6063-T5	1	0.214	
2	YG-W26B-0000-002	前面板	5052-H32	1	0.461	
1	YG-W26B-0000-001	侧板	6063-T5	2	0.110	
序号	图号	名称	材料	数量	单重	备注

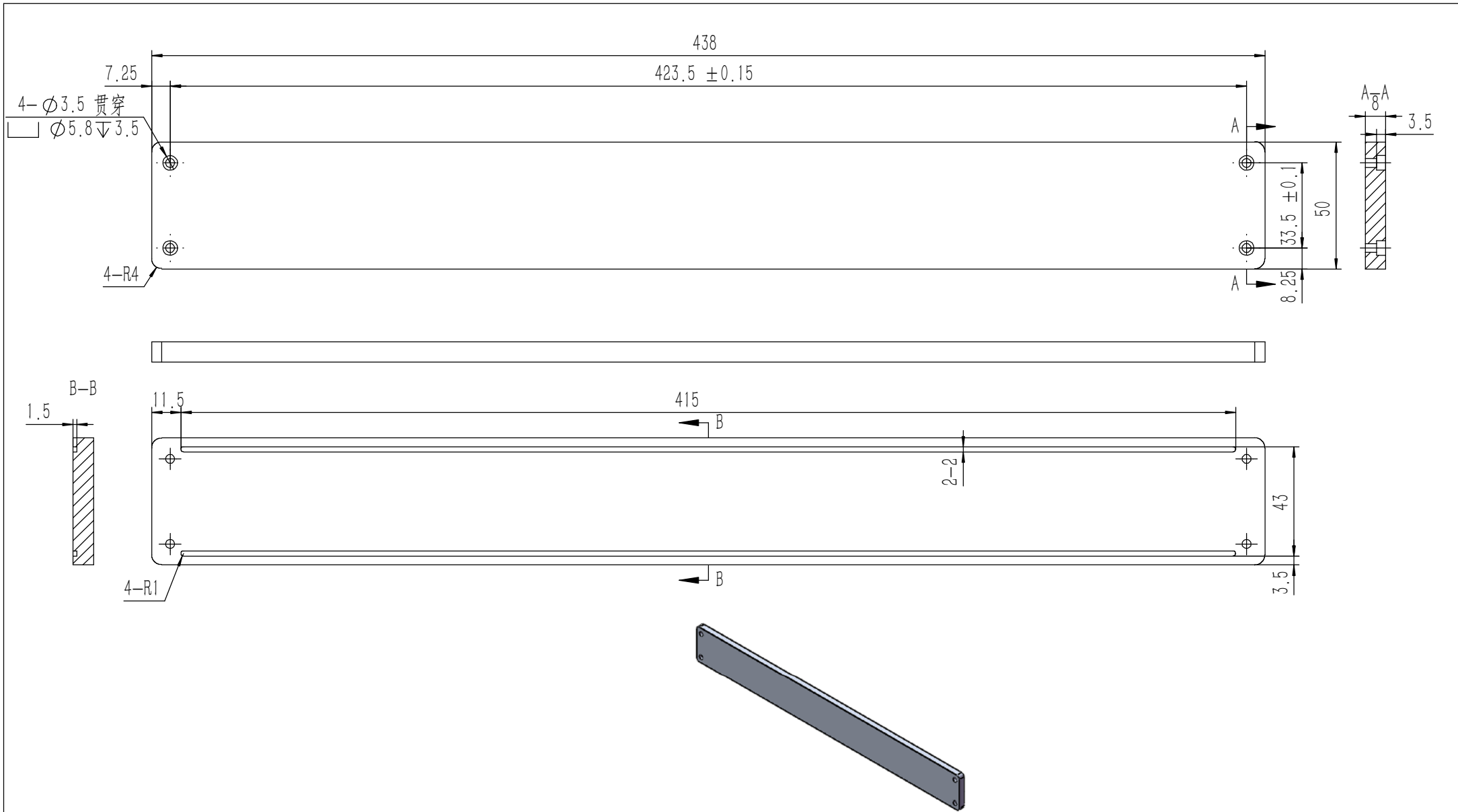
Tolerances (未注公差):		Material (材料): (装配图)		YONGU 永固	
0.5 to 6 ± 0.1		Weight: (重量) (Kg):	1.934		
6 to 30 ± 0.2		Protection: (表面处理):			
30 to 120 ± 0.3		Part Name (零/部件名称):	W26B功放		
120 to 400 ± 0.4		Drawing Number (图号):		YG-W26B-0000-000	
Break sharp edges (未注锐边倒角):	Angular tolerances (未注角度公差):	Drawn by (绘图):	Date (日期):	Size (图幅):	
Ch 0.05 to 0.25 x45°	<6° ± 10'	邓展锋	2020.05.16	A0	
Position tolerances (未注位置公差):	<30° ± 20'	Check by (校对):	Date (日期):	Scale (比例):	
± 0.05	<120° ± 30'	Signature by (批准):	Date (日期):	1:1	Sheet (页数):
	>120° ± 1°			Revision (版本):	1 / 1



技术要求:

- 1、零件加工表面不应有划痕、擦伤等损伤零件表面的缺陷;
- 2、去除毛刺飞边, 锐角倒钝;
- 3、未标注尺寸见3D数模。

Tolerances (未注公差): 0.5 to 6 ± 0.1 6 to 30 ± 0.2 30 to 120 ± 0.3 120 to 400 ± 0.4	Material (材料):	6063-T5	YONGU 永固
	Weight: (重量) (Kg)	0.110	
Break sharp edges (未注锐边倒角): Ch 0.05 to 0.25 x45°	Protection: (表面处理):		Drawing Number (图号): YG-W26B-0000-001
	Position tolerances (未注位置公差): ±0.05	Part Name (零/部件名称): 侧板	
Angular tolerances (未注角度公差): <6° ± 10' <30° ± 20' <120° ± 30' >120° ± 1°	Part Name (零/部件名称):	侧板	Size: (图幅): A3
	Drawn by (绘图): 邓展锋	Date (日期): 2020.05.16	Scale (比例): 1:1
	Check by (校对):	Date (日期):	Revision (版本): A1
	Signature by (批准):	Date (日期):	Sheet (页数): 1 / 1

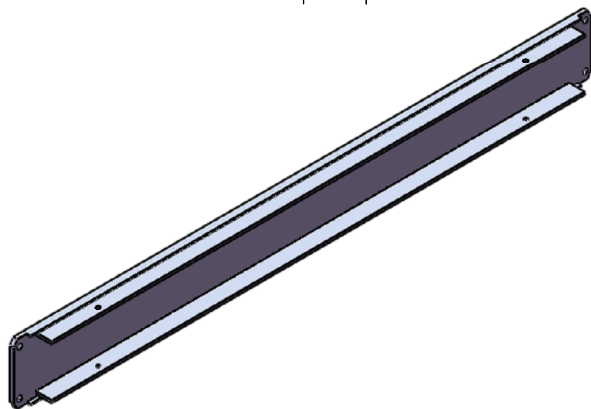
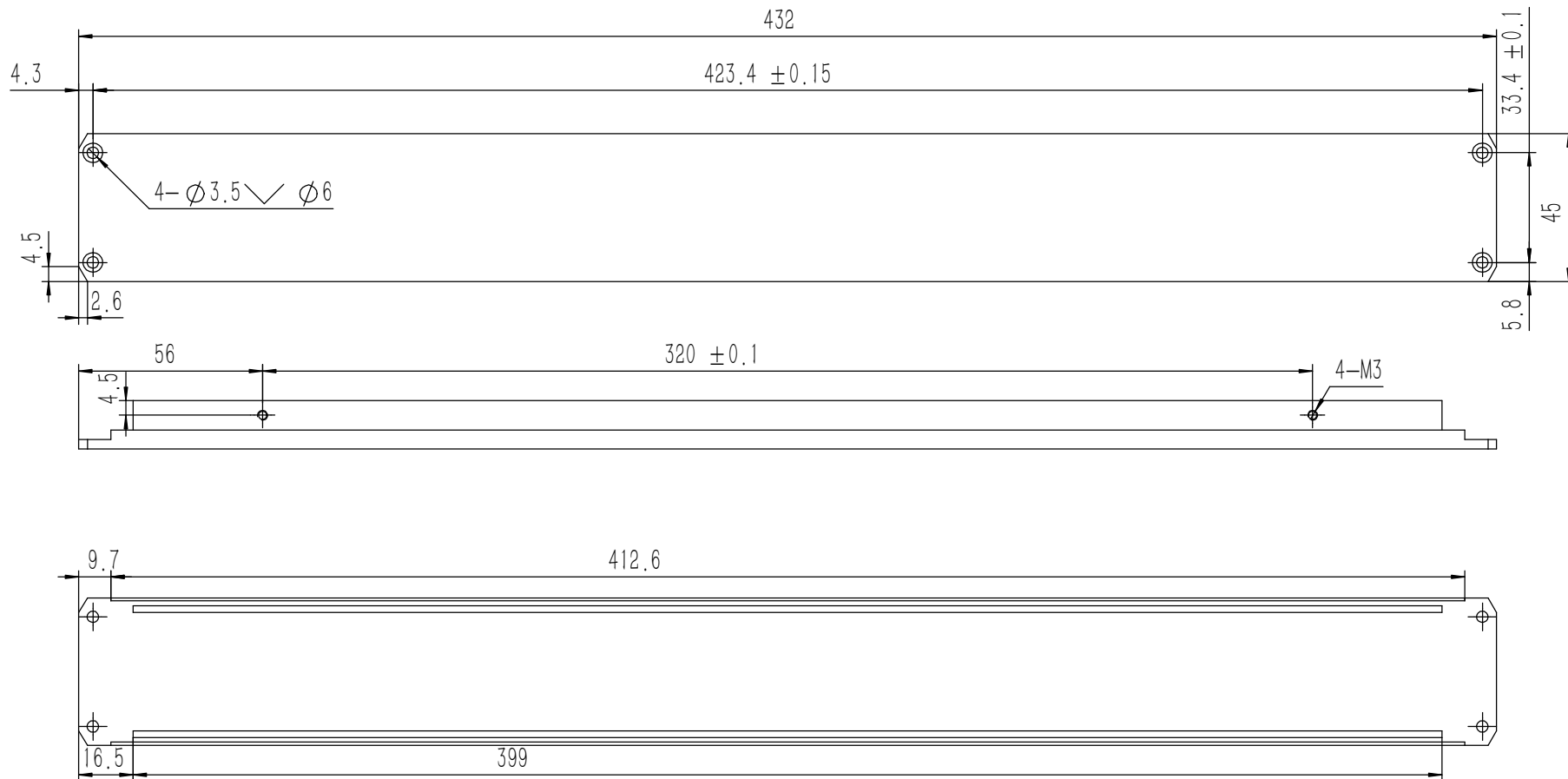
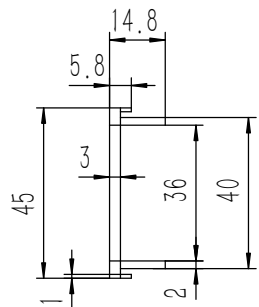


技术要求:

- 1、零件加工表面不应有划痕、擦伤等损伤零件表面的缺陷;
- 2、去除毛刺飞边,锐角倒钝;
- 3、未标注尺寸见3D数模。

Tolerances (未注公差):	Material (材料):	5052-H32	
	0.5 to 6 ± 0.1	Weight: (重量) (Kg):	0.461
6 to 30 ± 0.2	Protection: (表面处理):		
30 to 120 ± 0.3	Part Name (零/部件名称):	前面板	
120 to 400 ± 0.4	Part Name (零/部件名称):	前面板	
Break sharp edges (未注锐边倒角): Ch 0.05 to 0.25 x45°	Angular tolerances (未注角度公差):	Drawing Number (图号):	YG-W26B-0000-002
Position tolerances (未注位置公差): ± 0.05	<6° $\pm 10'$	Size: (图幅):	A2
	<30° $\pm 20'$	Scale (比例):	1:1
	<120° $\pm 30'$	Revision (版本):	A1
	>120° $\pm 1^\circ$	Drawn by (绘图):	邓展锋
		Date (日期):	2020.05.16
		Check by (校对):	
		Date (日期):	
		Signature by (批准):	
		Date (日期):	
		Sheet (页数):	1 / 1

YONGU 永固

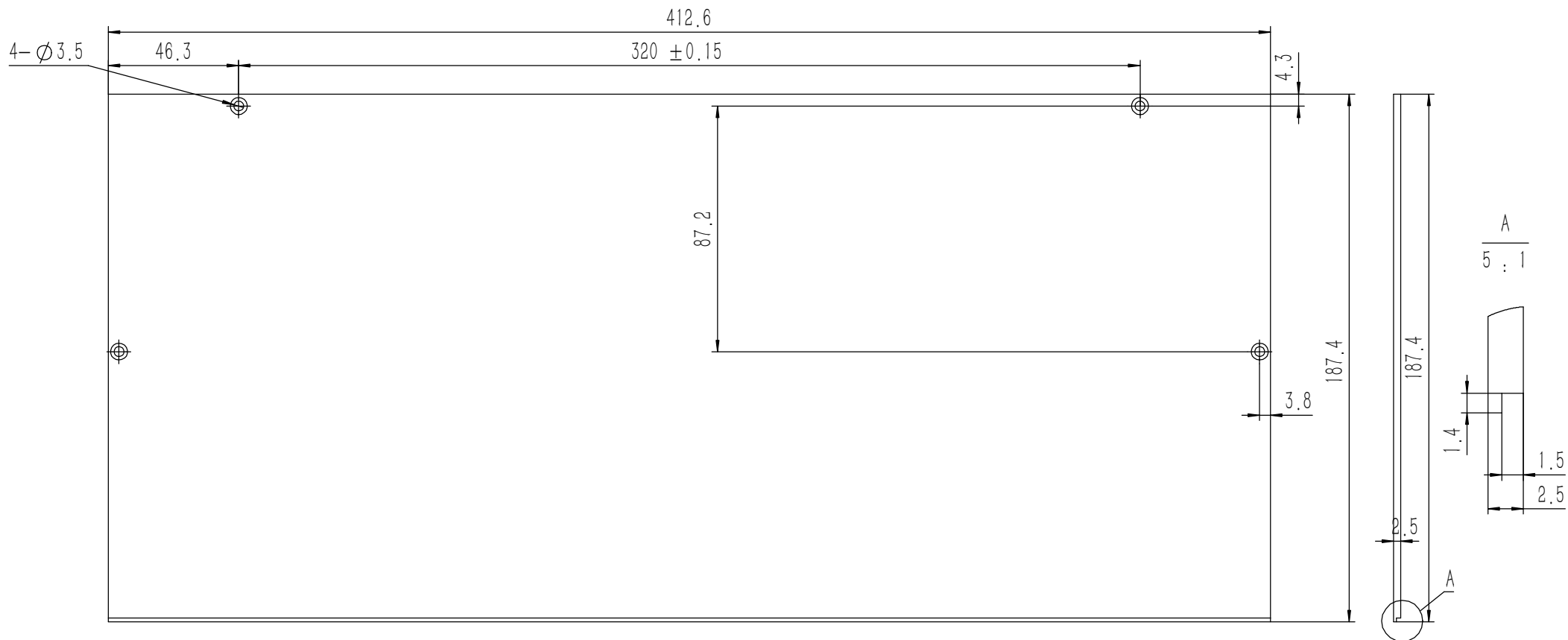


技术要求:

- 1、零件加工表面不应有划痕、擦伤等损伤零件表面的缺陷;
- 2、去除毛刺飞边, 锐角倒钝;
- 3、未标注尺寸见3D数模。

Tolerances (未注公差):	Material (材料):	6063-T5	
	0.5 to 6 ± 0.1	Weight: (重量) (Kg):	0.214
6 to 30 ± 0.2	Protection: (表面处理):		
30 to 120 ± 0.3	Part Name (零/部件名称):	后面板	
120 to 400 ± 0.4	Part Name (零/部件名称):	后面板	
Break sharp edges (未注锐边倒角): Ch 0.05 to 0.25 x45°	Angular tolerances (未注角度公差):	Drawing Number (图号):	YG-W26B-0000-003
Position tolerances (未注位置公差): ±0.05	<6° ± 10' <30° ± 20' <120° ± 30' >120° ± 1°	Drawn by (绘图): 邓展锋	Date (日期): 2020.05.16
		Check by (校对):	Date (日期):
		Signature by (批准):	Date (日期):
		Size: (图幅): A2	Scale (比例): 1:1
		Revision (版本): A1	Sheet (页数): 1 / 1

YONGU 永固



技术要求:

- 1、零件加工表面不应有划痕、擦伤等损伤零件表面的缺陷;
- 2、去除毛刺飞边, 锐角倒钝;
- 3、未标注尺寸见3D数模。

Tolerances (未注公差):	Material (材料):	5052-H32	
	0.5 to 6 ± 0.1	Weight: (重量) (Kg):	0.515
6 to 30 ± 0.2	Protection: (表面处理):		
30 to 120 ± 0.3	Part Name (零/部件名称):		
120 to 400 ± 0.4	盖板		Drawing Number (图号):
Break sharp edges (未注锐边倒角): Ch 0.05 to 0.25 x45°	Drawn by (绘图): 邓展锋		YG-W26B-0000-004
	Date (日期): 2020.05.16		Size: (图幅): A2
Position tolerances (未注位置公差): ±0.05	Check by (校对):		Scale (比例): 1:1
	Date (日期):		Revision (版本): A1
Angular tolerances (未注角度公差): <6° ± 10' <30° ± 20' <120° ± 30' >120° ± 1°	Signature by (批准):		Sheet (页数):
	Date (日期):		1 / 1

YONGU 永固