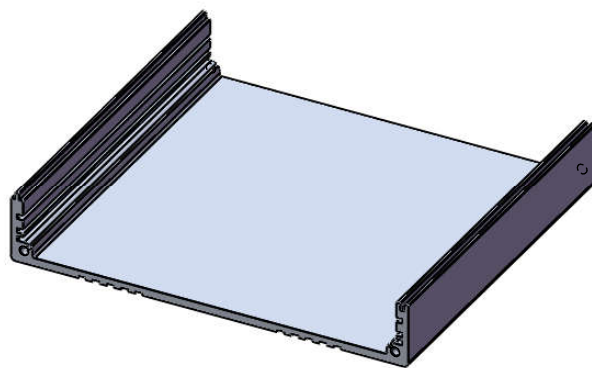
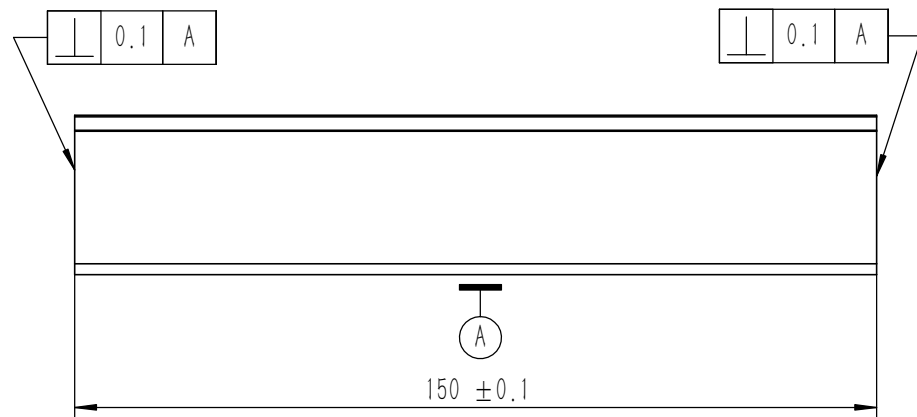
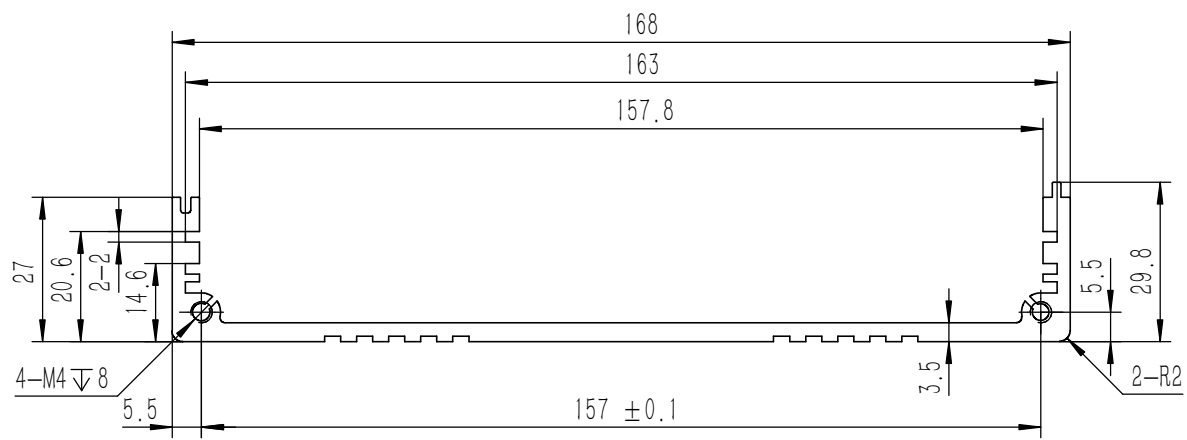


技术要求:

- 1、必须按照设计、工艺要求及本规定和有关标准进行装配;
- 2、所有零部件(包括外购、外协件)必须具有检验合格证方能进行装配;
- 3、零件在装配前必须清理和清洗干净,不得有毛刺、飞边、氧化皮、锈蚀、切屑、砂粒、灰尘和油污等,并应符合相应清洁度要求;
- 4、装配过程中零件不得磕碰、划伤和锈蚀;
- 5、油漆未干的零件不得进行装配;
- 6、相对运动的零件,装配时接触面间应加润滑油脂;
- 7、各零、部件装配后相对位置应准确。

4	GB-T-819.1-2000-C-NI-M4X8	碳钢镀镍十字沉头螺丝 M4X8	普通碳钢	8	0.0009	
3	YG-K10B-0000-003	挡板	5052-H32	2	0.048	
2	YG-K10B01-0000-002	K10B红色塑料防护框	ABS	2	0.032	
1	YG-K10B-0000-001	壳体	6063-T5	2	0.317	
序号	图号	名称	材料	数量	单重	备注

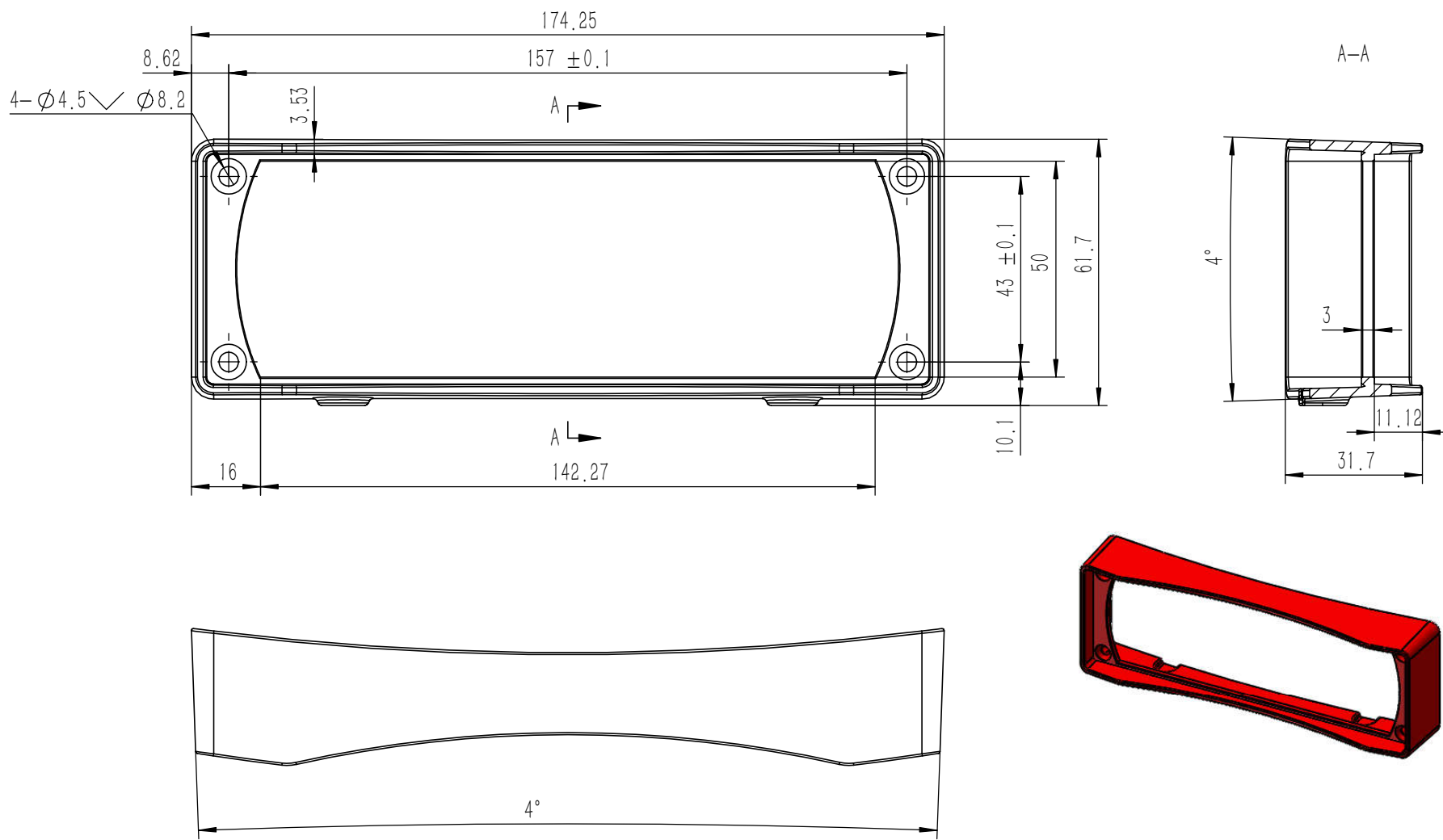
Tolerances (未注公差):		Material (材料): (装配图)		YONGU 永固	
0.5 to 6 ± 0.1	6 to 30 ± 0.2	Weight: (重量) (Kg):	0.801		
30 to 120 ± 0.3	120 to 400 ± 0.4	Protection: (表面处理):			
Break sharp edges (未注锐边倒角): Ch 0.05 to 0.25 x45°		Part Name (零/部件名称):		Drawing Number (图号):	
Angular tolerances (未注角度公差): <6° ± 10' <30° ± 20' <120° ± 30' >120° ± 1°		YG-K10B 壳体		YG-K10B-0000-000	
Position tolerances (未注位置公差): ±0.05		Drawn by (绘图):	许宏彬	Date (日期):	2020.05.09
		Check by (校对):		Date (日期):	
		Signature by (批准):		Date (日期):	
		Size: (图幅):	A2	Scale (比例):	1:1
		Revision (版本):	A1	Sheet (页数):	1 / 1



技术要求:

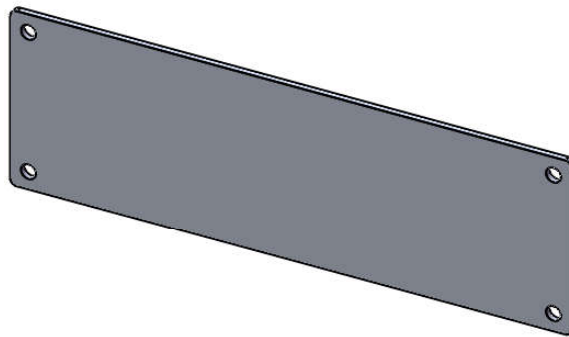
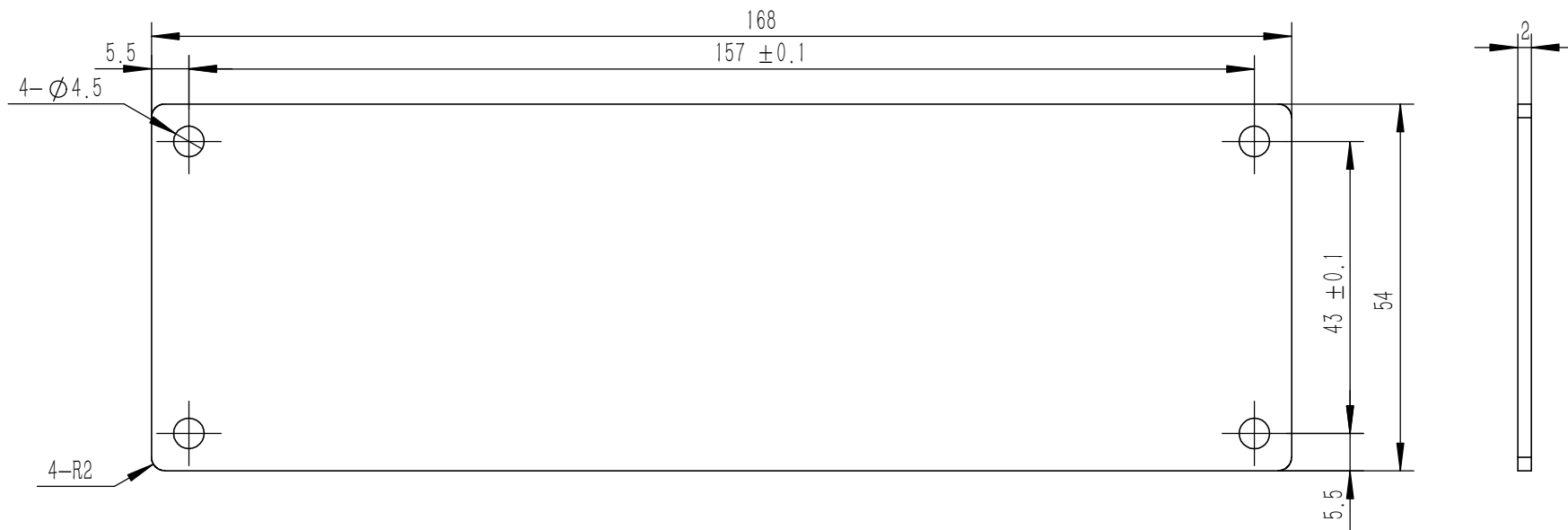
- 1、零件加工表面不应有划痕、擦伤等损伤零件表面的缺陷;
- 2、去除毛刺飞边, 锐角倒钝;
- 3、未标注尺寸见3D数模。

Tolerances (未注公差): 0.5 to 6 ± 0.1 6 to 30 ± 0.2 30 to 120 ± 0.3 120 to 400 ± 0.4	Material (材料):	6063-T5		YONGU 永固
	Weight: (重量) (Kg):	0.317		
Break sharp edges (未注锐边倒角): Ch 0.05 to 0.25 x45°	Protection: (表面处理):	Part Name (零/部件名称):		Drawing Number (图号):
Position tolerances (未注位置公差): ±0.05	Angular tolerances (未注角度公差): <6° ± 10' <30° ± 20' <120° ± 30' >120° ± 1°	壳 体		YG-K10B-0000-001
	Drawn by (绘图):	许宏彬	Date (日期):	2020.05.09
	Check by (校对):		Date (日期):	
	Signature by (批准):		Date (日期):	
			Size (图幅):	A3
			Scale (比例):	1:1
			Revision (版本):	
			Sheet (页数):	1 / 1




技术要求:
 1、零件加工表面不应有划痕、擦伤等损伤零件表面的缺陷;
 2、去除毛刺飞边,锐角倒钝;
 3、未标注尺寸见3D数模。

Tolerances (未注公差): 0.5 to 6 ± 0.1 6 to 30 ± 0.2 30 to 120 ± 0.3 120 to 400 ± 0.4	Material (材料):	ABS	YONGU 永固		
	Weight: (重量) (Kg)	0.032			
Break sharp edges (未注锐边倒角): Ch 0.05 to 0.25 x45°	Protection: (表面处理):	喷橡胶漆	Drawing Number (图号): YG-K10B01-0000-002		
	Angular tolerances (未注角度公差): <6° ± 10' <30° ± 20' <120° ± 30' >120° ± 1°	Part Name (零/部件名称):		K10B红色塑料防护框	
Position tolerances (未注位置公差): ±0.05	Drawn by (绘图):	许宏彬	Date (日期): 2020.05.09	Size (图幅): A3	Sheet (页数): 1 / 1
	Check by (校对):		Date (日期):	Scale (比例): 1:1	
	Signature by (批准):		Date (日期):	Revision (版本):	



技术要求:

- 1、零件加工表面不应有划痕、擦伤等损伤零件表面的缺陷;
- 2、去除毛刺飞边, 锐角倒钝;
- 3、未标注尺寸见3D数模。

Tolerances (未注公差): 0.5 to 6 ± 0.1 6 to 30 ± 0.2 30 to 120 ± 0.3 120 to 400 ± 0.4	Material (材料):	5052-H32		YONGU 
	Weight: (重量) (Kg)	0.048		
Break sharp edges (未注锐边倒角): Ch 0.05 to 0.25 x45°	Protection: (表面处理):			Drawing Number (图号): YG-K10B-0000-003
	Position tolerances (未注位置公差): ±0.05	Part Name (零/部件名称):	挡板	
Angular tolerances (未注角度公差): <6° ± 10' <30° ± 20' <120° ± 30' >120° ± 1°	Drawn by (绘图):	许宏彬	Date (日期): 2020.05.09	Size: (图幅): A4
	Signature by (批准):		Date (日期):	Scale (比例): 1:1
			Date (日期):	Revision (版本): A1
				Sheet (页数): 1 / 1