

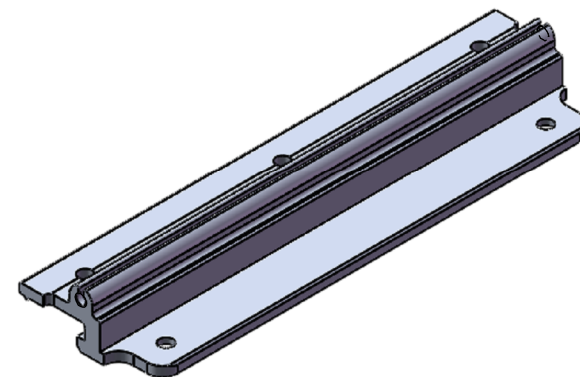
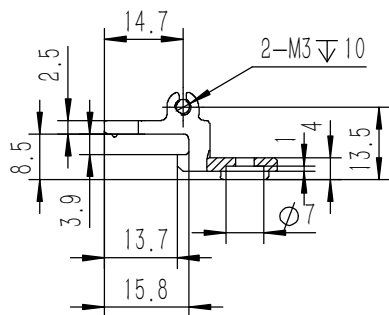
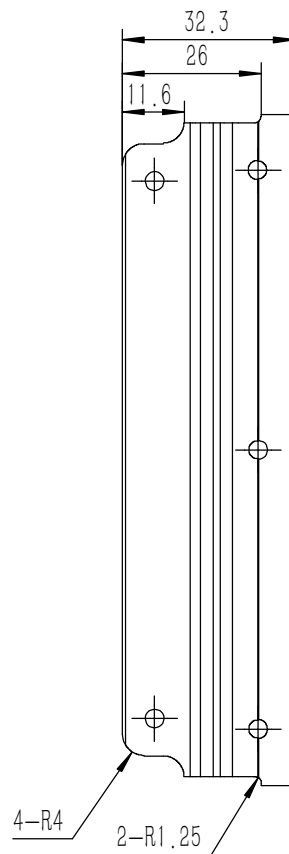
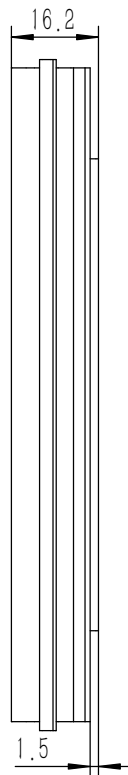
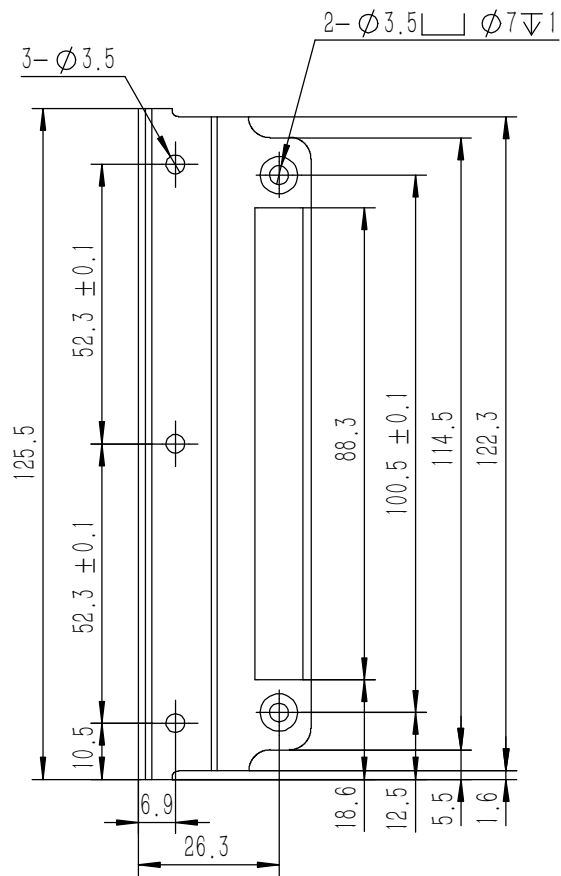
21	DIN-9250-S-NL-M3	不锈钢防松垫圈	SUS 304	8	0.000	
20	YG-TY-A13-007	A垫板	5052-H32	1	0.410	
19	YG-TY-XJD-001	自粘胶垫35X11X3	硅胶胶	8	0.0013	
18	GB-T-70.3-2000-C-NI-M3X6	芳生镀白镍内六角沉头螺丝M3X6	普通碳钢	8	0.0004	
17	YG-TY-A12-007	前后面板-3U	5052-H32	2	0.699	
16	YG-TY-A07-003	后防护条-3U	5052-H32	2	0.054	
15	YG-TY-A11-002	面板下固定件2	电解板	2	0.056	
14	GB-T-973-1976-C-NI-M3X12	碳钢镀锌十字大扁头螺丝M3X12	普通碳钢	16	0.001	
13	S-M3-1-ZI	压铆螺母镀白锌M3X1	普通碳钢	8	0.3750	
12	BSQ-M3-5-ZI-D5.4	压铆螺柱 M3X5	普通碳钢	8	0.001	
11	YG-TY-A01-007	上下盖板	5052-H32	1	0.764	
10	GB-T-973-1976-C-NI-M3X6	碳钢镀锌十字大扁头螺丝M3X6	普通碳钢	20	0.0006	
9	YG-TY-A05-002	A包角2	6063-T5	4	0.043	
8	YG-TY-A06-003	拉手-3U	6063-T5	2	0.103	
7	YG-TY-A10-002	面板上固定件2	电解板	2	0.049	
6	YG-TY-A05-001	A包角1	6063-T5	4	0.043	
5	YG-TY-A03-003	组合侧板	6063-T5	6	0.274	
4	YG-TY-A09-003	侧板连接件	电解板	4	0.034	
3	YG-TY-A02-007	上盖板	5052-H32	1	0.736	
2	GB-T-973-1976-C-NI-M3X4	碳钢镀锌十字大扁头螺丝M3X4	普通碳钢	42	0.0005	
1	YG-TY-A08-003	A侧板固定件3U	6063-T5	4	0.047	
序号	图号	名称	材料	数量	单重	备注

技术要求:

- 1、必须按照设计、工艺要求及本规定和有关标准进行装配;
- 2、所有零部件(包括外购、外协件)必须具有检验合格证方能进行装配;
- 3、零件在装配前必须清理和清洗干净,不得有毛刺、飞边、氧化皮、锈蚀、切屑、砂粒、灰尘和油污等,并应符合相应清洁度要求;
- 4、装配过程中零件不得磕碰、划伤和锈蚀;
- 5、油漆未干的零件不得进行装配;
- 6、相对运动的零件,装配时接触面间应加润滑油脂;
- 7、各零、部件装配后相对位置应准确。

Break sharp edges (未注锐边倒角): Ch 0.05 to 0.25 x45°	Angular tolerances (未注角度公差): <6° ± 10' <30° ± 20' <120° ± 30' >120° ± 1°
Position tolerances (未注位置公差): ± 0.05	


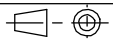
Tolerances (未注公差): 0.5 to 6 ± 0.1 6 to 30 ± 0.2 30 to 120 ± 0.3 120 to 400 ± 0.4		Material (材料): (装配图)			
		Weight: (重量) (Kg): 6.217			
		Protection: (表面处理):			
		Part Name (零/部件名称):		Drawing Number (图号):	
		A07机箱		YG-A07-1000-000	
Drawn by (绘图): 邓展锋		Date (日期): 2020.05.22		Size (图幅): A0	
Check by (校对):		Date (日期):		Scale (比例): 1:1.2	
Signature by (批准):		Date (日期):		Sheet (页数):	
				1 / 1	

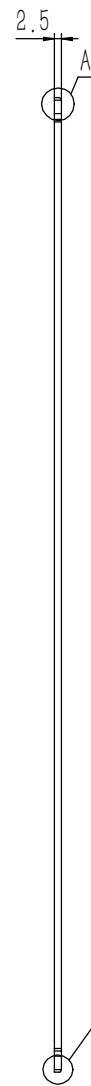
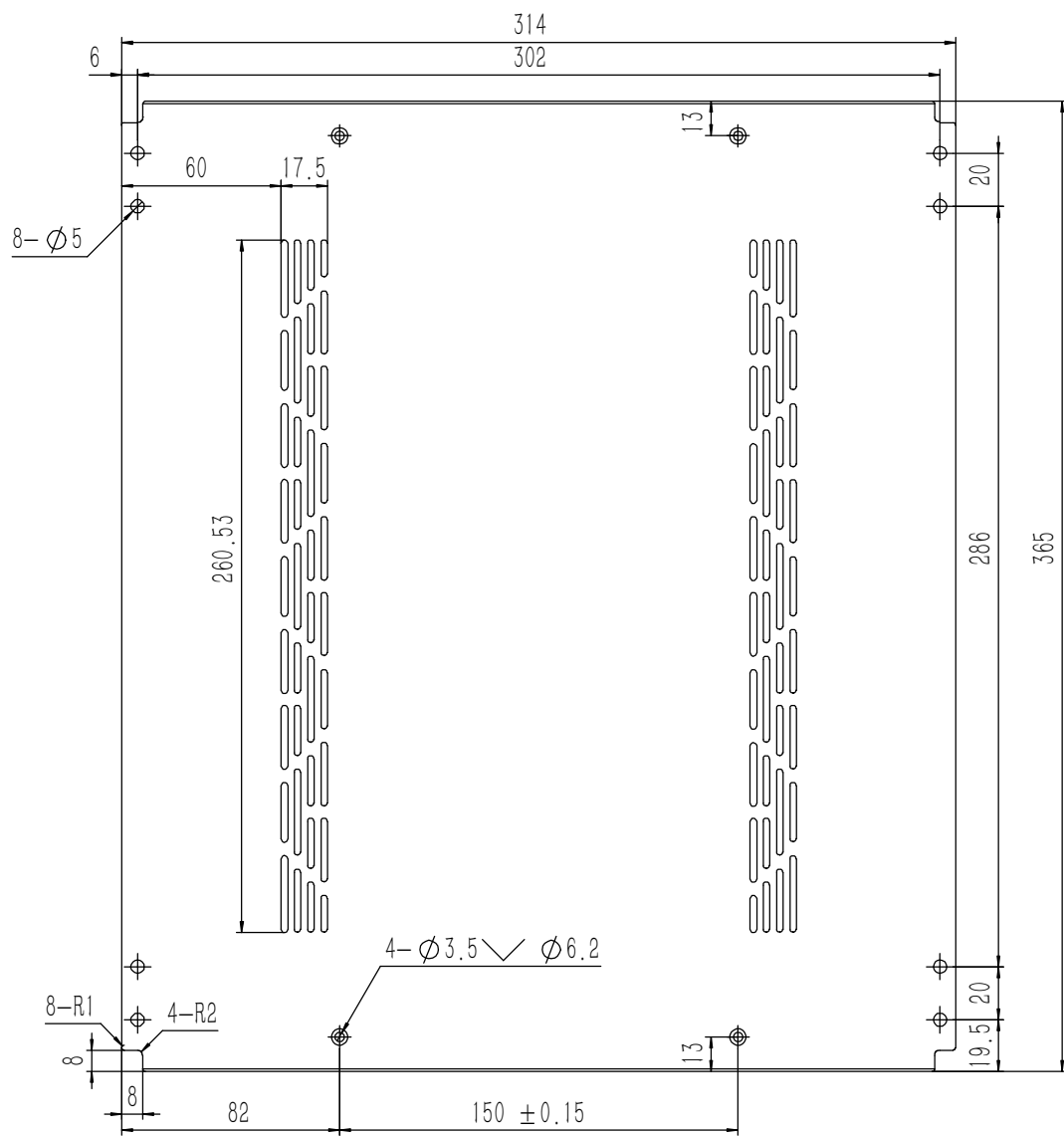


技术要求:

- 1、零件加工表面不应有划痕、擦伤等损伤零件表面的缺陷;
- 2、去除毛刺飞边, 锐角倒钝;
- 3、未标注尺寸见3D数模。

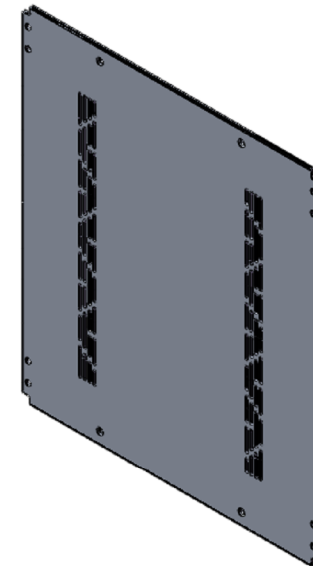
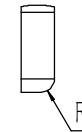
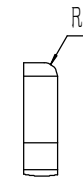
Break sharp edges (未注锐边倒角): Ch 0.05 to 0.25 x45°	Angular tolerances (未注角度公差): <6° ± 10' <30° ± 20' <120° ± 30' >120° ± 1°
Position tolerances (未注位置公差): ±0.05	

Tolerances (未注公差): 0.5 to 6 ± 0.1 6 to 30 ± 0.2 30 to 120 ± 0.3 120 to 400 ± 0.4	Material (材料): 6063-T5	<h1>YONGU</h1> 		
	Weight: (重量) (Kg) 0.047			
	Protection: (表面处理):	Drawing Number (图号): YG-TY-A08-003		
	Part Name (零/部件名称): A侧板固定件3U			
	Drawn by (绘图): 邓展锋	Date (日期): 2020.05.18	Size (图幅): A3	 Sheet (页数): 1 / 1
	Check by (校对):	Date (日期):	Scale (比例): 1:1	
	Signature by (批准):	Date (日期):	Revision (版本): A1	



A
5 : 1

B
5 : 1



技术要求:

- 1、零件加工表面不应有划痕、擦伤等损伤零件表面的缺陷;
- 2、去除毛刺飞边,锐角倒钝;
- 3、未标注尺寸见3D数模。

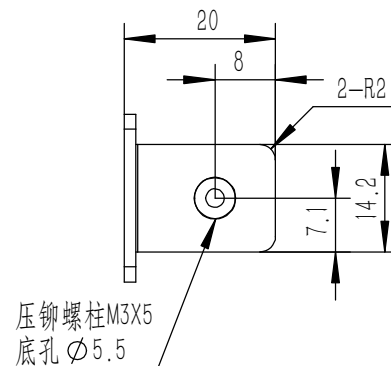
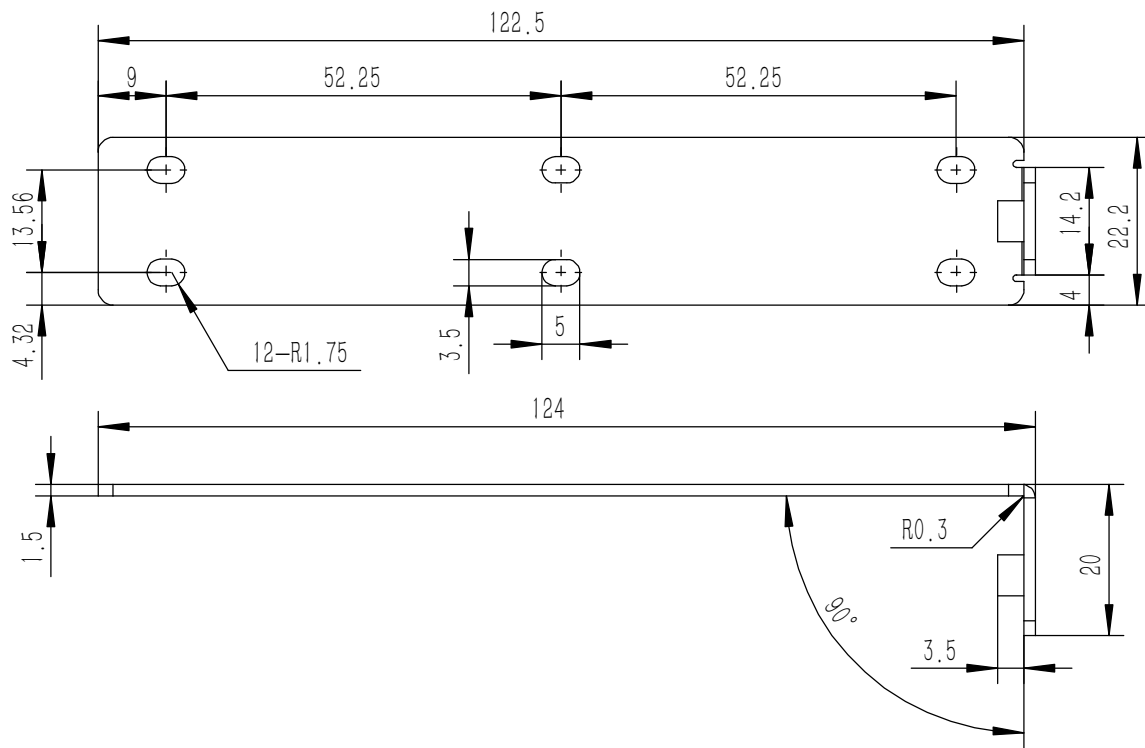
Tolerances (未注公差):	
0.5 to 6	± 0.1
6 to 30	± 0.2
30 to 120	± 0.3
120 to 400	± 0.4

Material (材料):	5052-H32
Weight: (重量) (Kg):	0.736
Protection: (表面处理):	
Part Name (零/部件名称):	上盖板

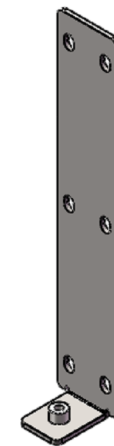
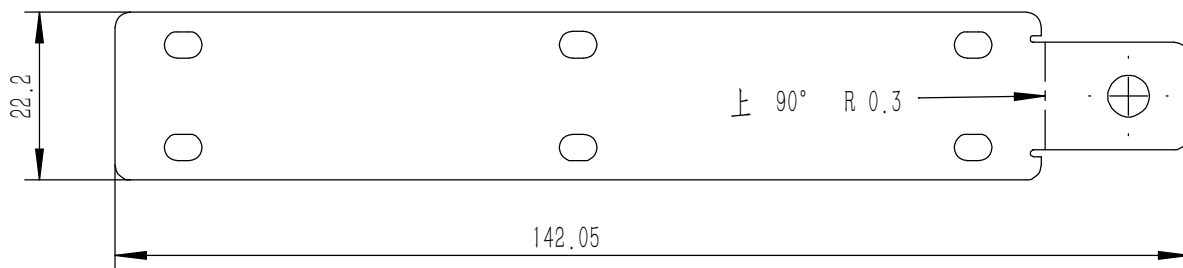


Break sharp edges (未注锐边倒角): Ch 0.05 to 0.25 x45°	Angular tolerances (未注角度公差):
	<6° ± 10'
	<30° ± 20'
	<120° ± 30'
	>120° ± 1°
Position tolerances (未注位置公差):	± 0.05

Drawing Number (图号): YG-TY-A02-007		Size: (图幅): A1		Sheet (页数):	
Drawn by (绘图): 莫永康	Date (日期): 2020.05.18	Scale (比例): 1:1	1 / 1		
Check by (校对):	Date (日期):	Revision (版本): A1			
Signature by (批准):	Date (日期):				



钣金展开及折弯方向参考图 (视图比例1:1)



技术要求:

- 1、零件加工表面不应有划痕、擦伤等损伤零件表面的缺陷;
- 2、去除毛刺飞边, 锐角倒钝;
- 3、未标注尺寸见3D数模。

Tolerances (未注公差):	
0.5 to 6	± 0.1
6 to 30	± 0.2
30 to 120	± 0.3
120 to 400	± 0.4

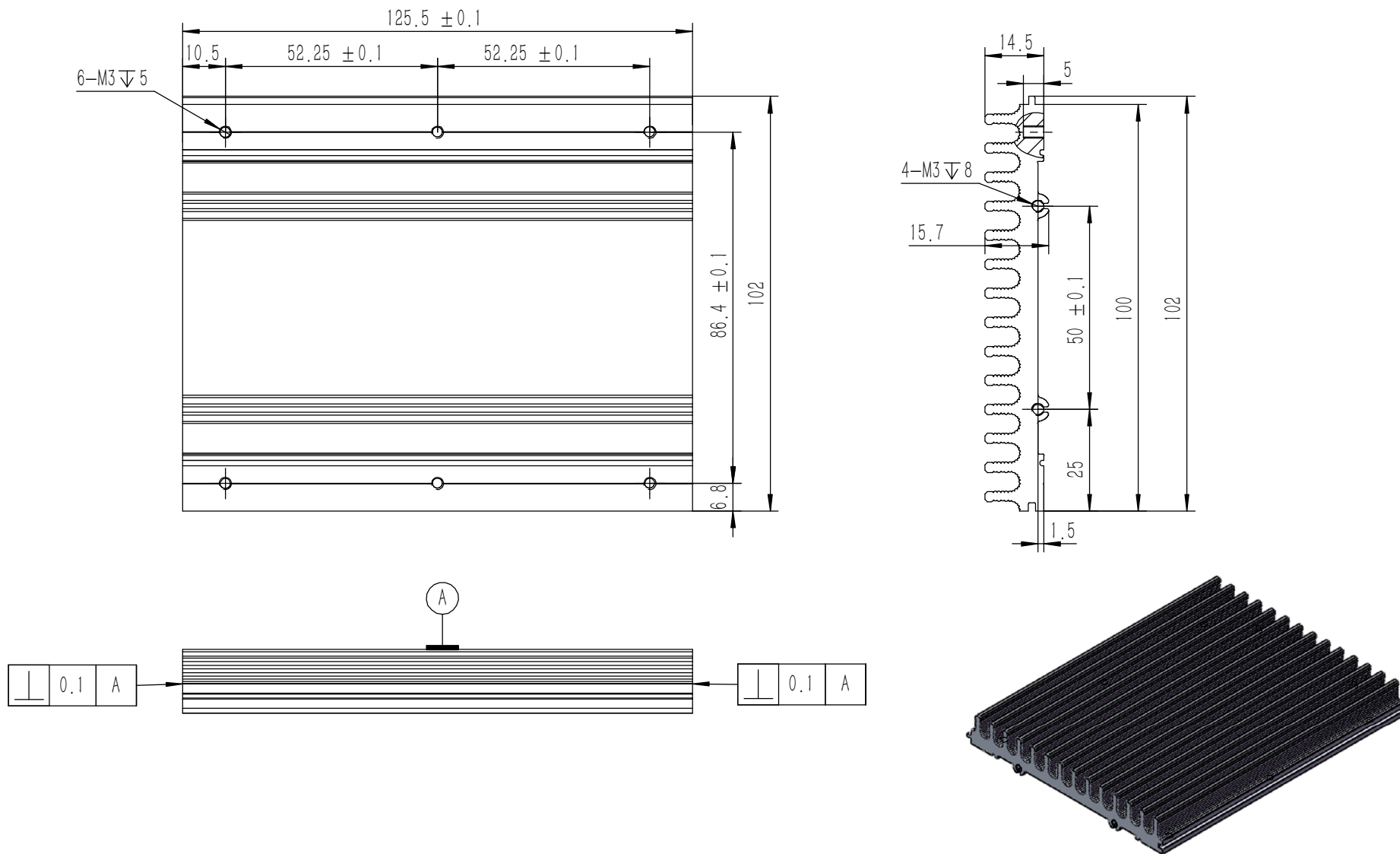
Break sharp edges (未注锐边倒角):		Angular tolerances (未注角度公差):	
Ch 0.05 to 0.25 x45°		<6°	± 10'
Position tolerances (未注位置公差):	± 0.05	<30°	± 20'
		<120°	± 30'
		>120°	± 1°

Material (材料):	电解板
Weight: (重量) (Kg)	0.034
Protection: (表面处理):	



Part Name (零/部件名称):		侧板连接件 3U	
Drawn by (绘图):	莫永康	Date (日期):	2020.05.19
Check by (校对):		Date (日期):	
Signature by (批准):		Date (日期):	

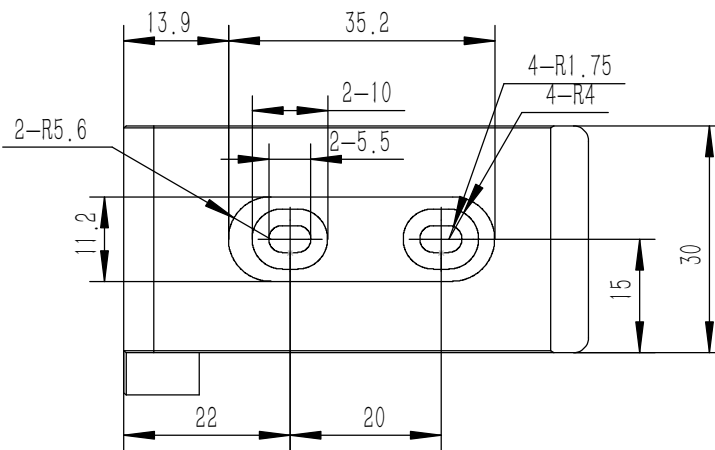
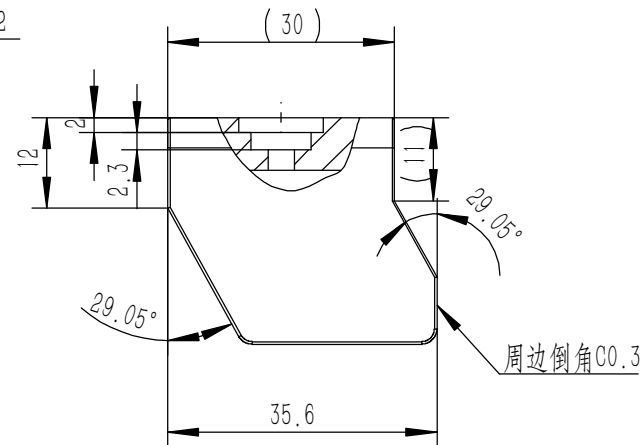
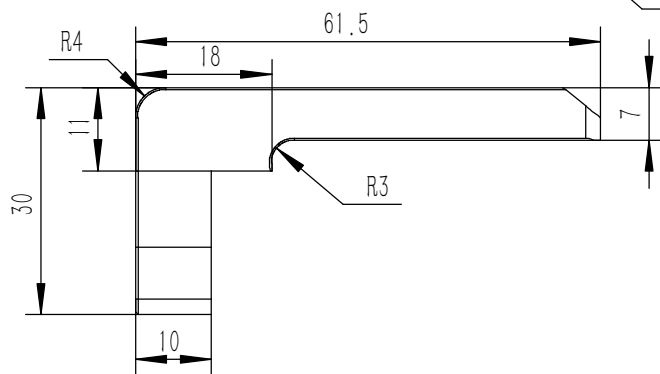
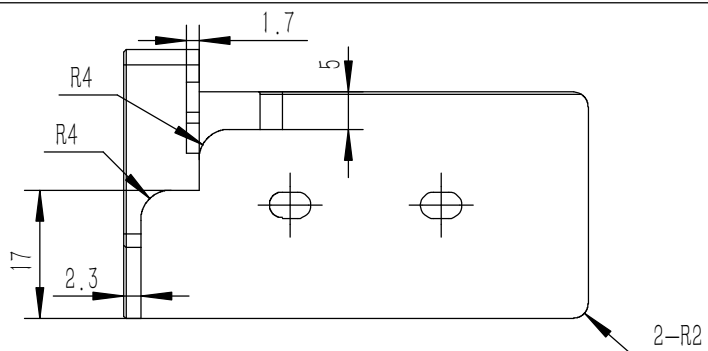
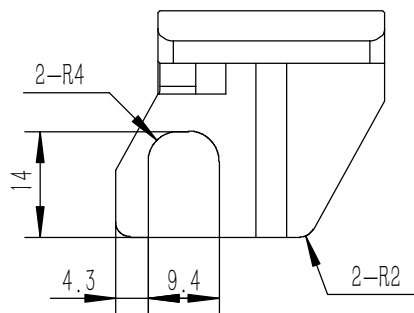
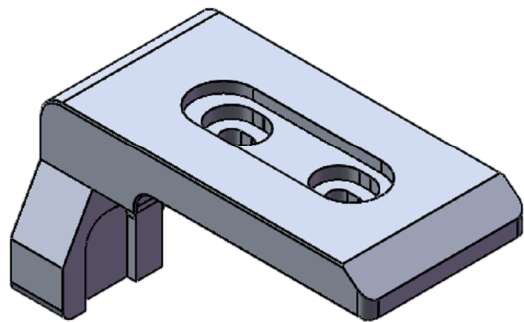
Drawing Number (图号):		YG-TY-A09-003	
Size: (图幅):	A4	Sheet (页数):	1 / 1
Scale (比例):	1:1		
Revision (版本):	A1		



技术要求:

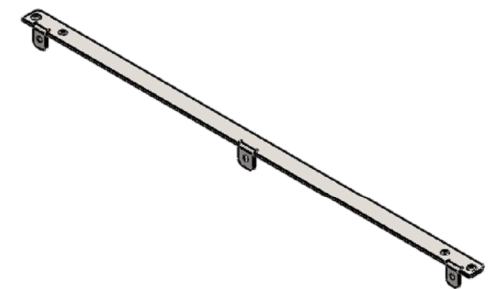
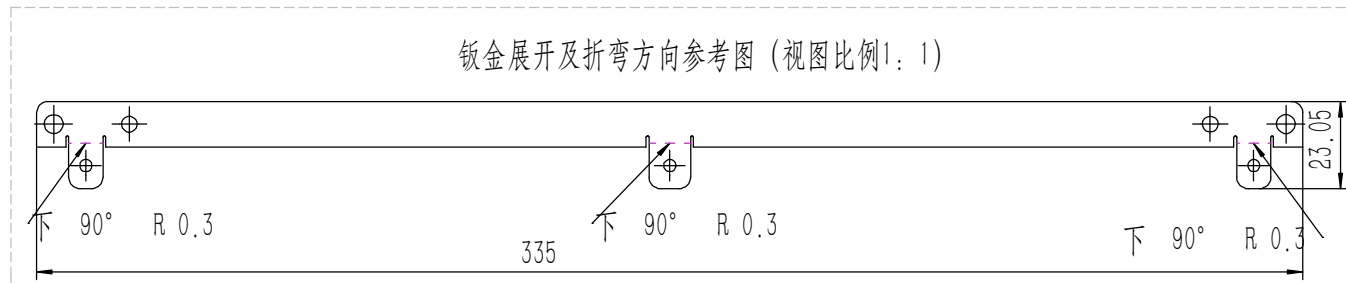
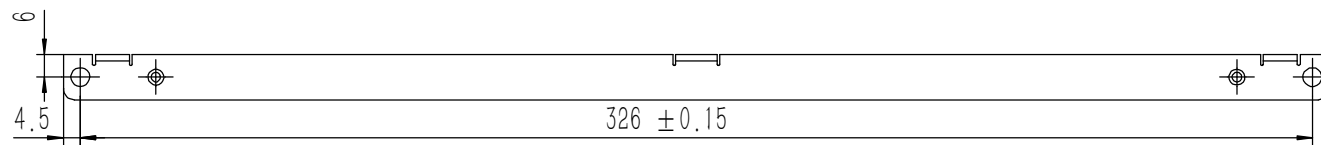
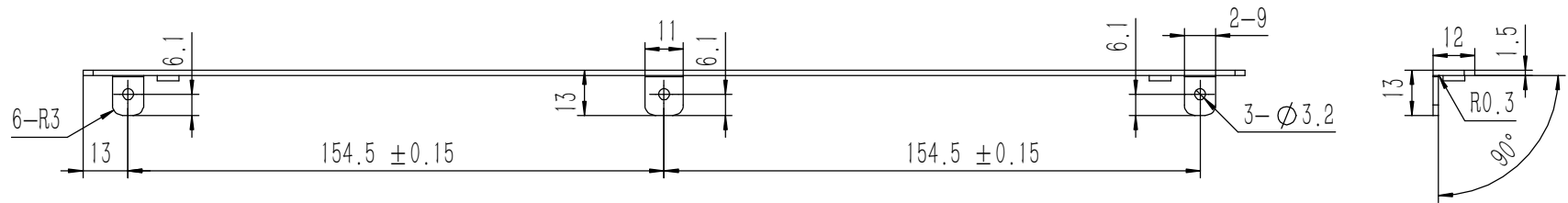
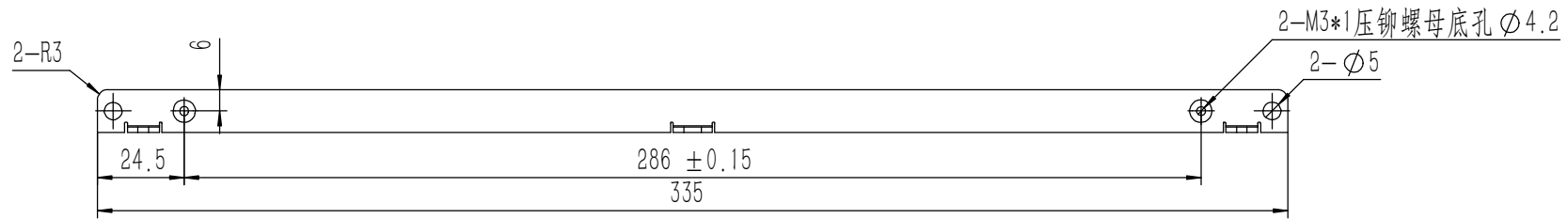
- 1、零件加工表面不应有划痕、擦伤等损伤零件表面的缺陷;
- 2、去除毛刺飞边,锐角倒钝;
- 3、未标注尺寸见3D数模。

Tolerances (未注公差): 0.5 to 6 ± 0.1 6 to 30 ± 0.2 30 to 120 ± 0.3 120 to 400 ± 0.4	Material (材料):	6063-T5		YONGU 永固
	Weight: (重量) (Kg)	0.274		
Break sharp edges (未注锐边倒角): Ch 0.05 to 0.25 x45°	Protection: (表面处理):			Drawing Number (图号): YG-TY-A03-003
	Position tolerances (未注位置公差): ±0.05	Part Name (零/部件名称): 组合侧板		
Angular tolerances (未注角度公差): <6° ± 10' <30° ± 20' <120° ± 30' >120° ± 1°	Part Name (零/部件名称):	组合侧板		Size: (图幅): A3 Scale (比例): 1:1 Revision (版本): A1
	Drawn by (绘图): 莫永康	Date (日期): 2020.05.15		
	Check by (校对):	Date (日期):		Sheet (页数): 1 / 1
	Signature by (批准):	Date (日期):		



- 技术要求:
- 1、零件加工表面不应有划痕、擦伤等损伤零件表面的缺陷;
 - 2、去除毛刺飞边, 锐角倒钝;
 - 3、未标注尺寸见3D数模。

Tolerances (未注公差): 0.5 to 6 ± 0.1 6 to 30 ± 0.2 30 to 120 ± 0.3 120 to 400 ± 0.4	Material (材料): 6063-T5	YONGU 永固	
	Weight: (重量) (Kg) 0.043		
Break sharp edges (未注锐边倒角): Ch 0.05 to 0.25 x45°	Protection: (表面处理):	Part Name (零/部件名称):	
	Position tolerances (未注位置公差): ±0.05	A包角1	
Angular tolerances (未注角度公差): <6° ± 10' <30° ± 20' <120° ± 30' >120° ± 1°	Part Name (零/部件名称):	Drawing Number (图号):	
	Part Name (零/部件名称):	YG-TY-A05-001	
Part Name (零/部件名称):	Drawn by (绘图): 莫永康	Date (日期): 2020.05.18	Size: (图幅): A4
Part Name (零/部件名称):	Check by (校对):	Date (日期):	Scale (比例): 1:1
Part Name (零/部件名称):	Signature by (批准):	Date (日期):	Revision (版本): A1
Part Name (零/部件名称):	Part Name (零/部件名称):	Part Name (零/部件名称):	Sheet (页数): 1 / 1

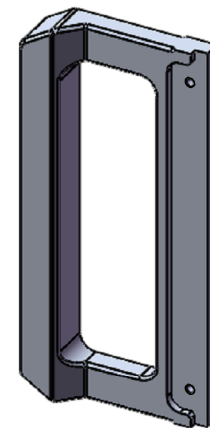
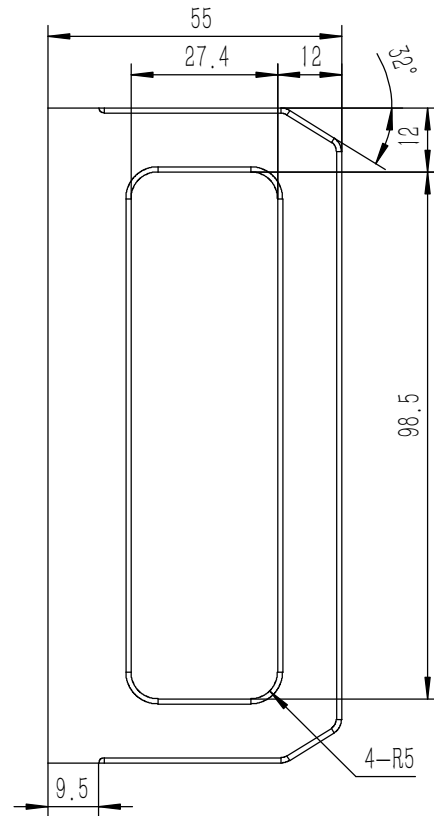
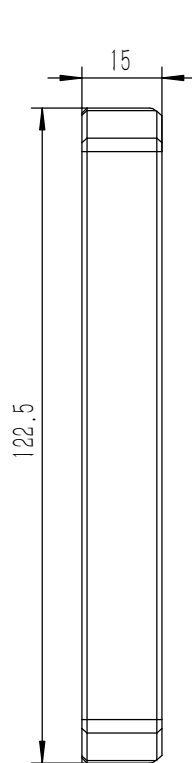
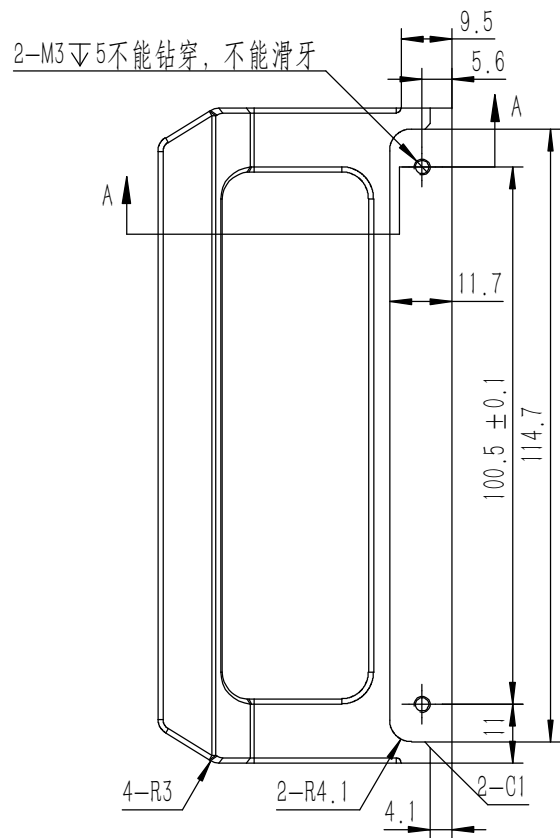
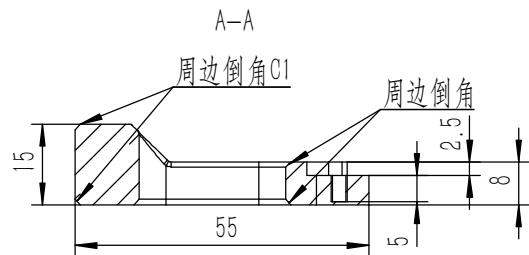


业务代码:

技术要求:

- 1、零件加工表面不应有划痕、擦伤等损伤零件表面的缺陷;
- 2、去除毛刺飞边,锐角倒钝;
- 3、未标注尺寸见3D数模。

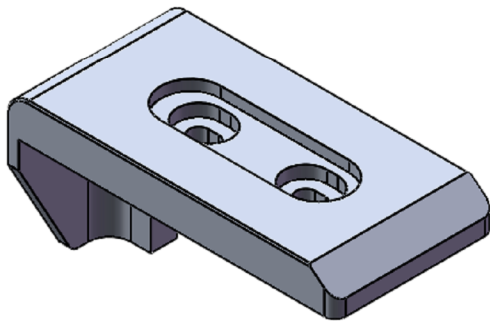
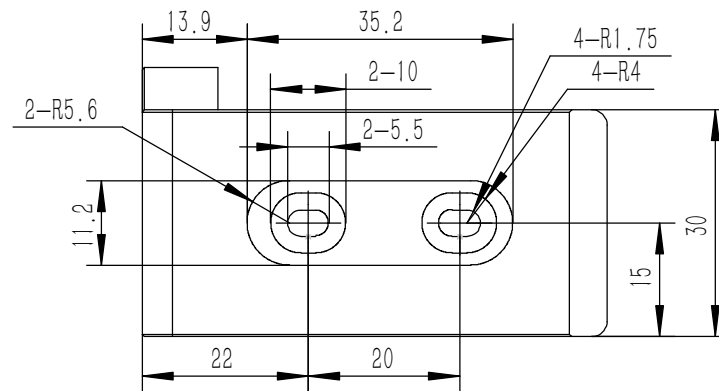
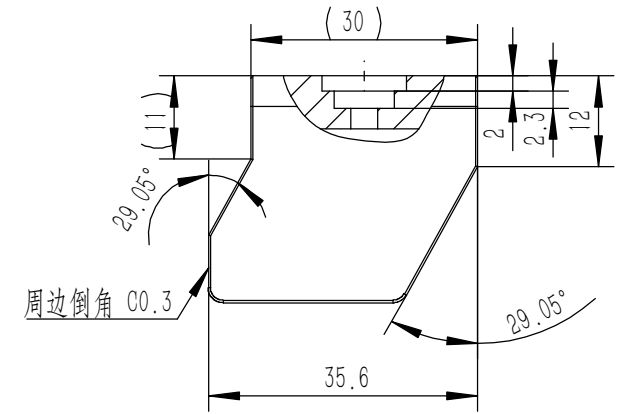
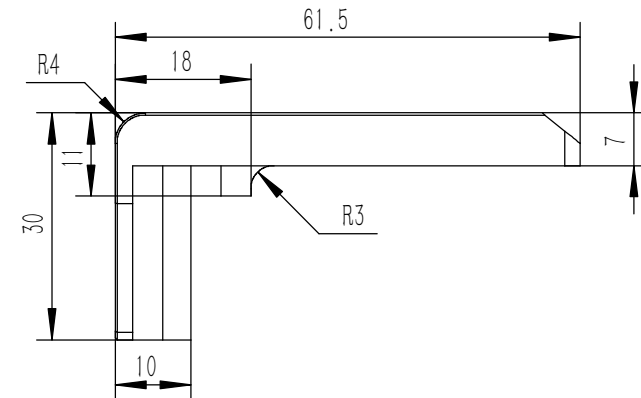
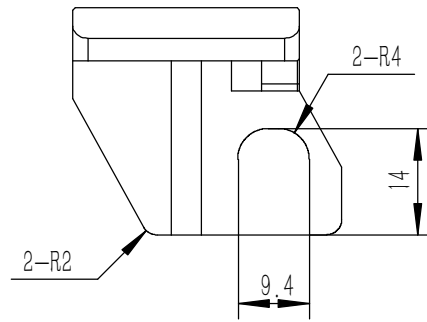
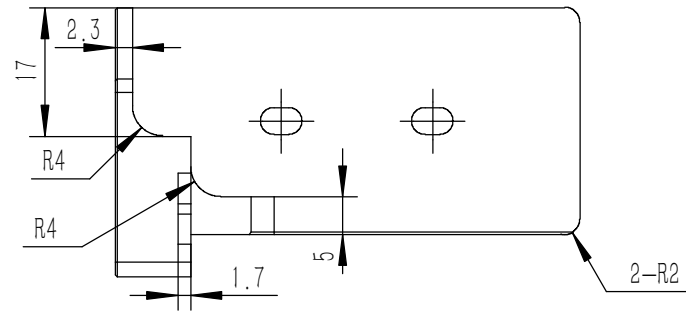
Tolerances (未注公差): 0.5 to 6 ± 0.1 6 to 30 ± 0.2 30 to 120 ± 0.3 120 to 400 ± 0.4	Material (材料):	电解板	YONGU 永固
	Weight: (重量) (Kg):	0.050	
Break sharp edges (未注锐边倒角): Ch 0.05 to 0.25 x45°	Protection: (表面处理):	毛坯	Drawing Number (图号): YG-TY-A10-002
	Position tolerances (未注位置公差): ±0.05	Part Name (零/部件名称):	
Angular tolerances (未注角度公差): <6° ± 10' <30° ± 20' <120° ± 30' >120° ± 1°	Drawn by (绘图):	许宏彬	Date (日期): 2020.09.18
	Check by (校对):		Date (日期):
	Signature by (批准):		Date (日期):
			Size (图幅): A2
			Scale (比例): 1:1
			Revision (版本): A1
			Sheet (页数): 1 / 1



技术要求:

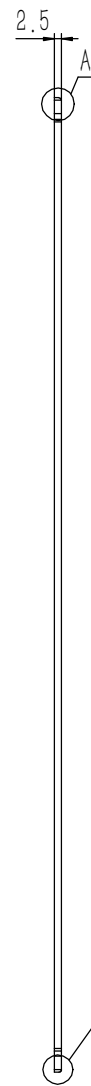
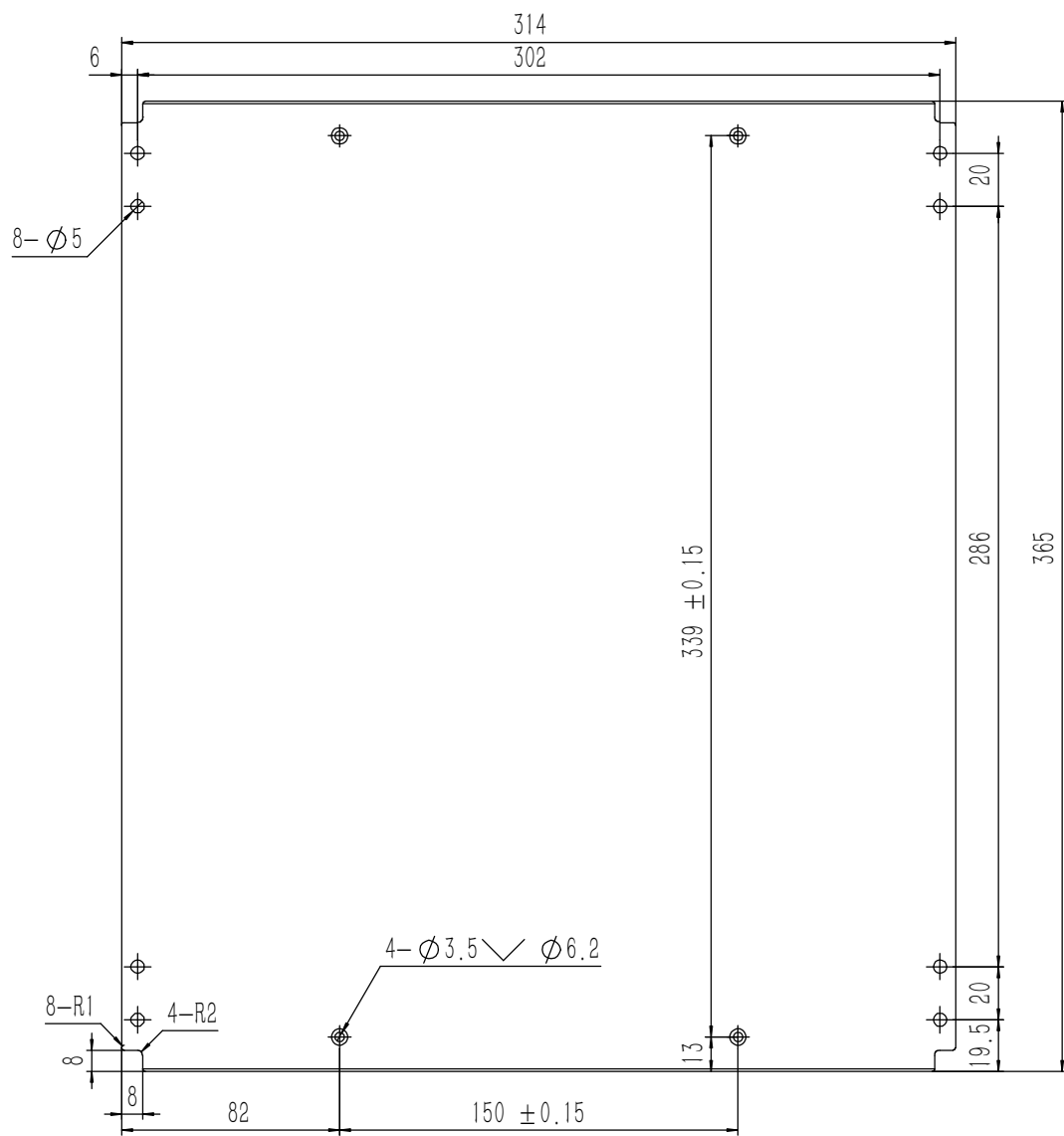
- 1、零件加工表面不应有划痕、擦伤等损伤零件表面的缺陷;
- 2、去除毛刺飞边, 锐角倒钝;
- 3、未标注尺寸见3D数模。

Tolerances (未注公差): 0.5 to 6 ± 0.1 6 to 30 ± 0.2 30 to 120 ± 0.3 120 to 400 ± 0.4	Material (材料):	6063-T5	
	Weight: (重量) (Kg)	0.103	
Break sharp edges (未注锐边倒角): Ch 0.05 to 0.25 x45°	Protection: (表面处理):		
	Part Name (零/部件名称):	拉手-3U	
Position tolerances (未注位置公差): ±0.05	Angular tolerances (未注角度公差): <6° ± 10' <30° ± 20' <120° ± 30' >120° ± 1°	Part Name (零/部件名称):	Drawing Number (图号):
		YONGU 永固	YG-TY-A06-003
	Drawn by (绘图): 邓展锋	Date (日期): 2020.05.18	Size (图幅): A3
	Check by (校对):	Date (日期):	Scale (比例): 1:1
	Signature by (批准):	Date (日期):	Revision (版本): A1
			Sheet (页数): 1 / 1



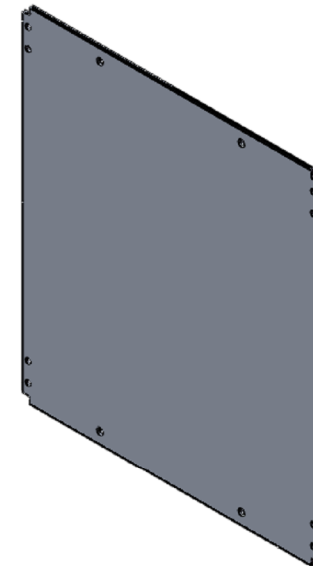
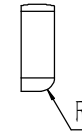
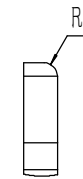
技术要求:
 1、零件加工表面不应有划痕、擦伤等损伤零件表面的缺陷;
 2、去除毛刺飞边,锐角倒钝;
 3、未标注尺寸见3D数模。

Tolerances (未注公差): 0.5 to 6 ± 0.1 6 to 30 ± 0.2 30 to 120 ± 0.3 120 to 400 ± 0.4	Material (材料): 6063-T5	YONGU 永固	
	Weight: (重量) (Kg) 0.043		
Break sharp edges (未注锐边倒角): Ch 0.05 to 0.25 x45° Position tolerances (未注位置公差): ±0.05	Protection: (表面处理):	Part Name (零/部件名称): A包角2	
	Angular tolerances (未注角度公差): <6° ± 10' <30° ± 20' <120° ± 30' >120° ± 1°	Part Name (零/部件名称): A包角2	Drawing Number (图号): YG-TY-A05-002
	Drawn by (绘图):	Date (日期): 2020.05.18	Size: (图幅): A4
	Check by (校对):	Date (日期):	Scale (比例): 1:1
	Signature by (批准):	Date (日期):	Revision (版本): A1
			Sheet (页数): 1 / 1



A
5 : 1

B
5 : 1



技术要求:

- 1、零件加工表面不应有划痕、擦伤等损伤零件表面的缺陷;
- 2、去除毛刺飞边, 锐角倒钝;
- 3、未标注尺寸见3D数模。

Tolerances (未注公差):	
0.5 to 6	± 0.1
6 to 30	± 0.2
30 to 120	± 0.3
120 to 400	± 0.4

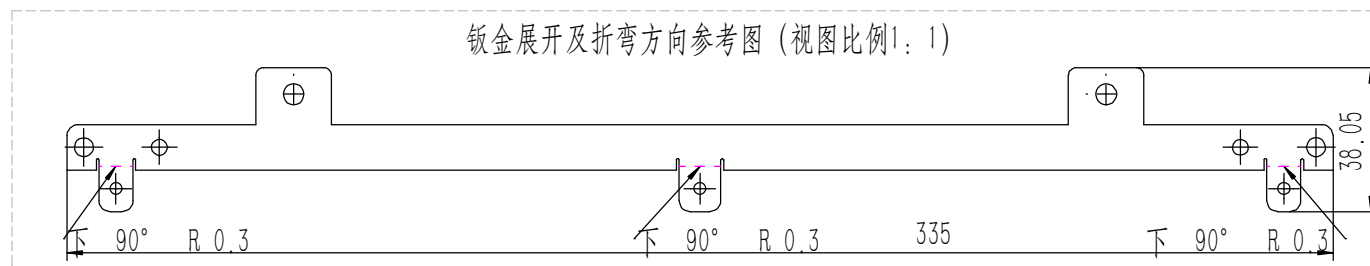
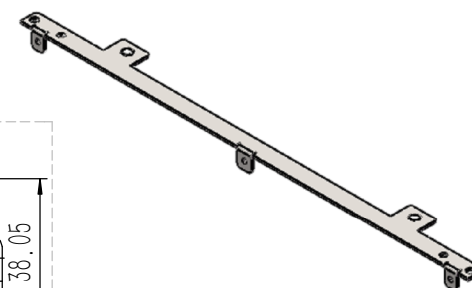
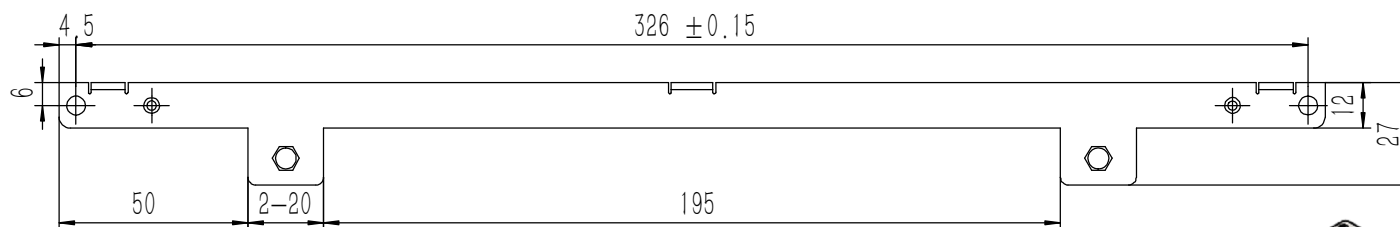
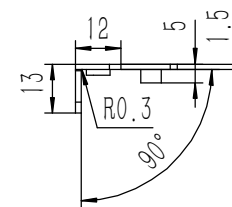
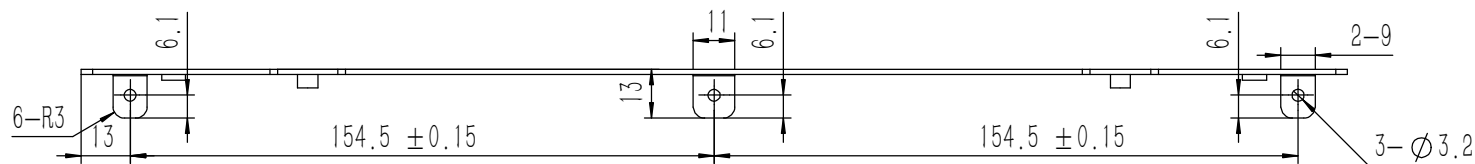
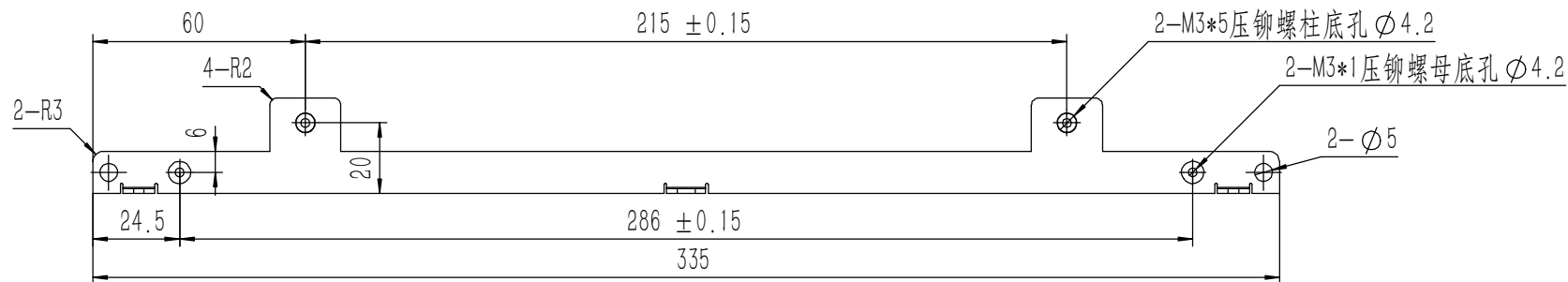
Break sharp edges (未注锐边倒角): Ch 0.05 to 0.25 x45°	Angular tolerances (未注角度公差):
	<6° ± 10'
	<30° ± 20'
	<120° ± 30'
	>120° ± 1°

Material (材料):	5052-H32
Weight: (重量) (Kg):	0.764
Protection: (表面处理):	
Part Name (零/部件名称):	上下盖板



Drawn by (绘图): 莫永康	Date (日期): 2020.05.18	Size: (图幅): A1	Sheet (页数): 1 / 1
Check by (校对):	Date (日期):	Scale (比例): 1:1	
Signature by (批准):	Date (日期):	Revision (版本): A1	

Drawing Number (图号):
YG-TY-A01-007



钣金展开及折弯方向参考图 (视图比例1:1)

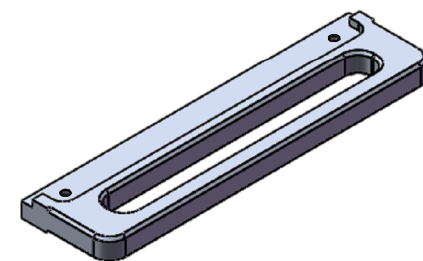
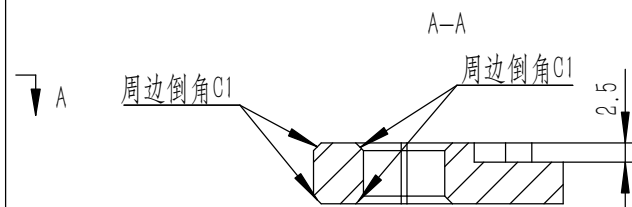
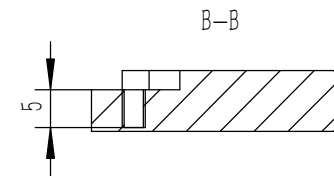
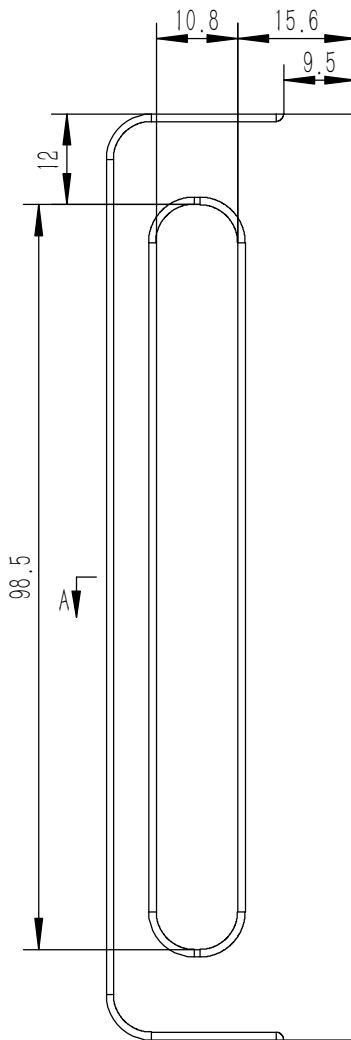
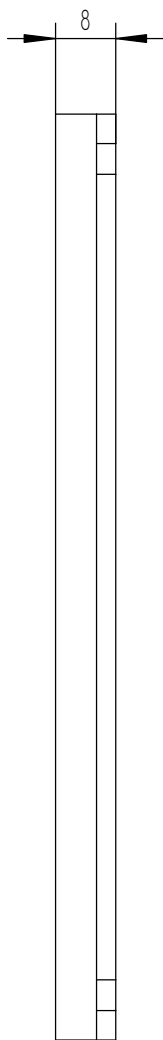
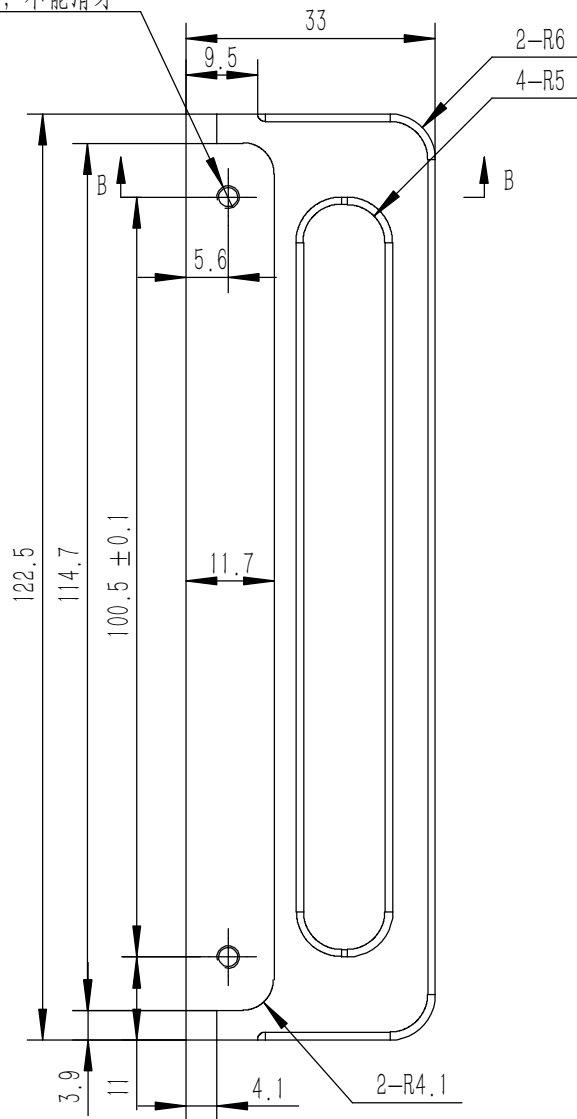
业务代码:

技术要求:

- 1、零件加工表面不应有划痕、擦伤等损伤零件表面的缺陷;
- 2、去除毛刺飞边, 锐角倒钝;
- 3、未标注尺寸见3D数模。

Tolerances (未注公差):		Material (材料): (装配图)		YONGU 永固	
0.5 to 6	± 0.1	Weight: (重量) (Kg):	0.058		
6 to 30	± 0.2	Protection: (表面处理): 毛坯		Drawing Number (图号):	
30 to 120	± 0.3	Part Name (零/部件名称):		YG-TY-A11-002	
120 to 400	± 0.4	面板下固定件2		Size: (图幅): A2	
Break sharp edges (未注锐边倒角): Ch 0.05 to 0.25 x45°		Angular tolerances (未注角度公差):		Sheet (页数):	
Position tolerances (未注位置公差): ± 0.05		Signature by (批准):		1 / 1	
		Date (日期): 2020.09.18		Scale (比例): 1:1	
		Date (日期):		Revision (版本): A1	
		Date (日期):			

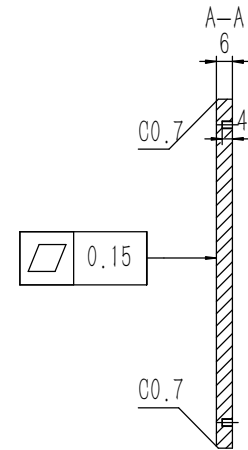
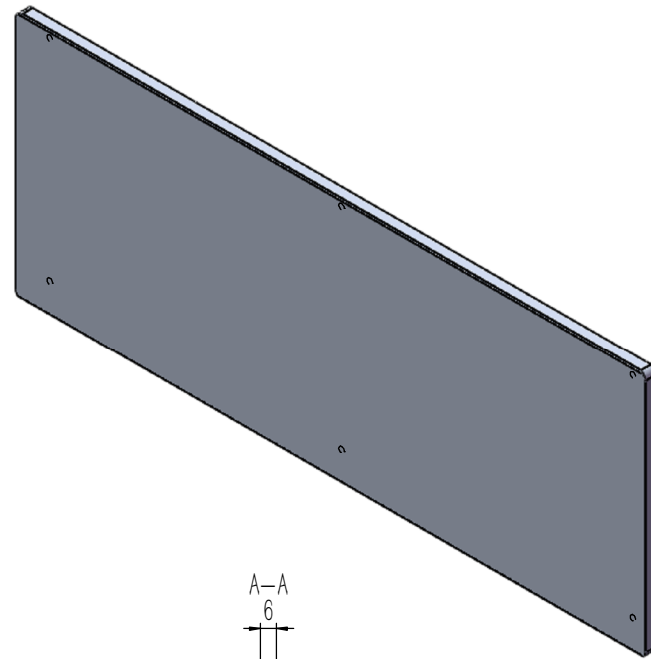
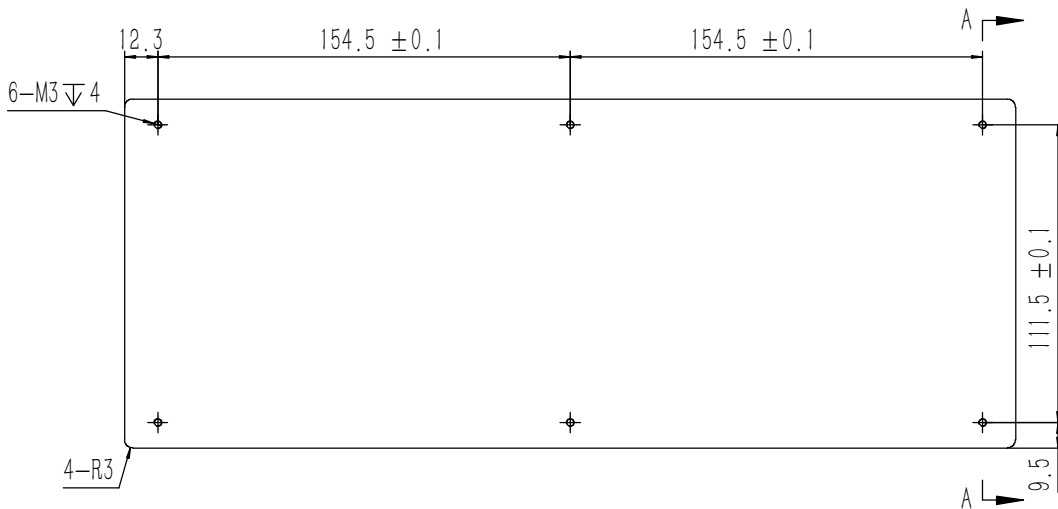
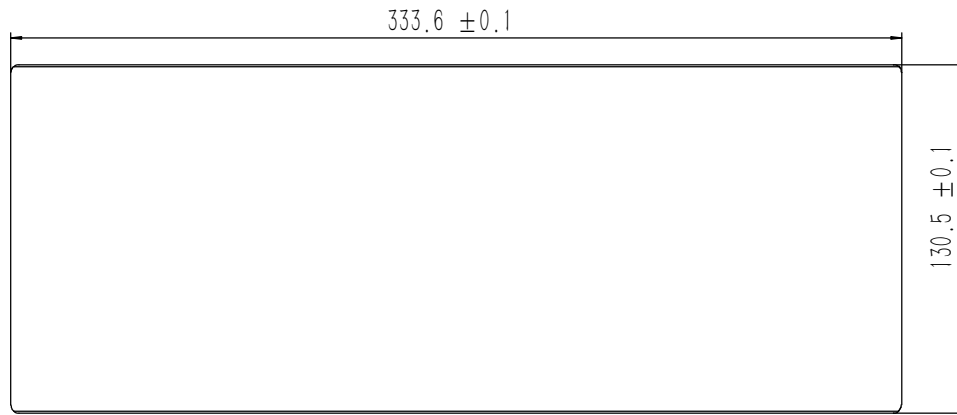
2-M3 5不能钻穿, 不能滑牙



技术要求:

- 1、零件加工表面不应有划痕、擦伤等损伤零件表面的缺陷;
- 2、去除毛刺飞边, 锐角倒钝;
- 3、未标注尺寸见3D数模。

Tolerances (未注公差): 0.5 to 6 ± 0.1 6 to 30 ± 0.2 30 to 120 ± 0.3 120 to 400 ± 0.4	Material (材料):	5052-H32		YONGU 永固
	Weight: (重量) (Kg)	0.054		
Break sharp edges (未注锐边倒角): Ch 0.05 to 0.25 x45°	Protection: (表面处理):			
	Position tolerances (未注位置公差): ±0.05	Part Name (零/部件名称):	后防护条-3U	
Angular tolerances (未注角度公差): <6° ± 10' <30° ± 20' <120° ± 30' >120° ± 1°	Part Name (零/部件名称):	后防护条-3U		Drawing Number (图号):
	Angular tolerances (未注角度公差): <6° ± 10' <30° ± 20' <120° ± 30' >120° ± 1°	Part Name (零/部件名称):	后防护条-3U	
	Drawn by (绘图):	邓展锋	Date (日期):	2020.05.18
	Check by (校对):		Date (日期):	
	Signature by (批准):		Date (日期):	
	Scale (比例):	1:1		Sheet (页数):
	Revision (版本):	A1		1 / 1

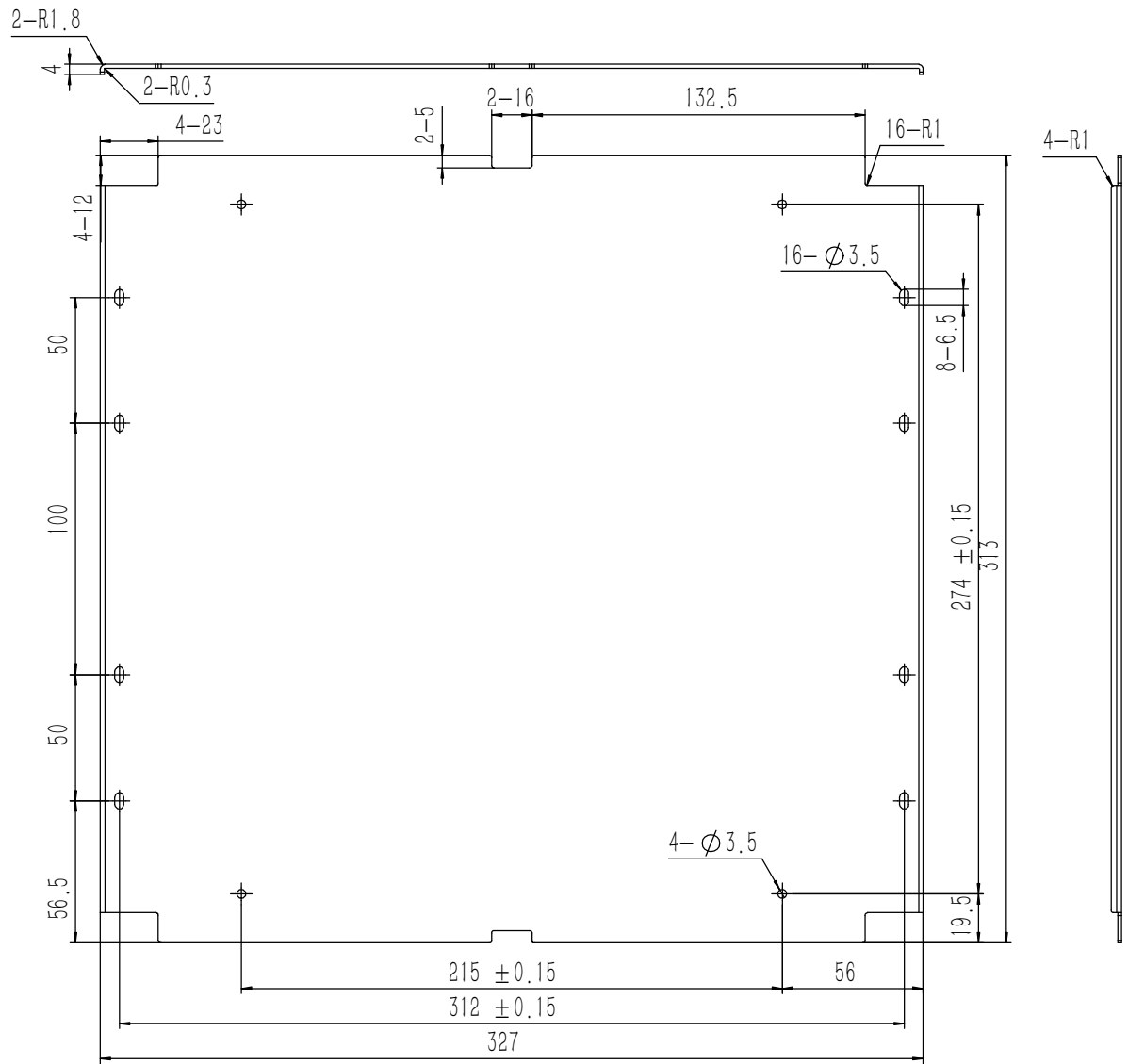
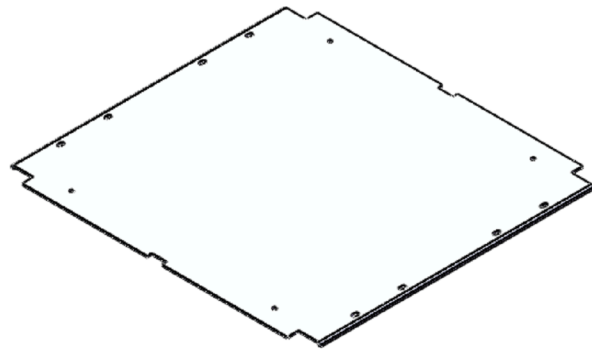
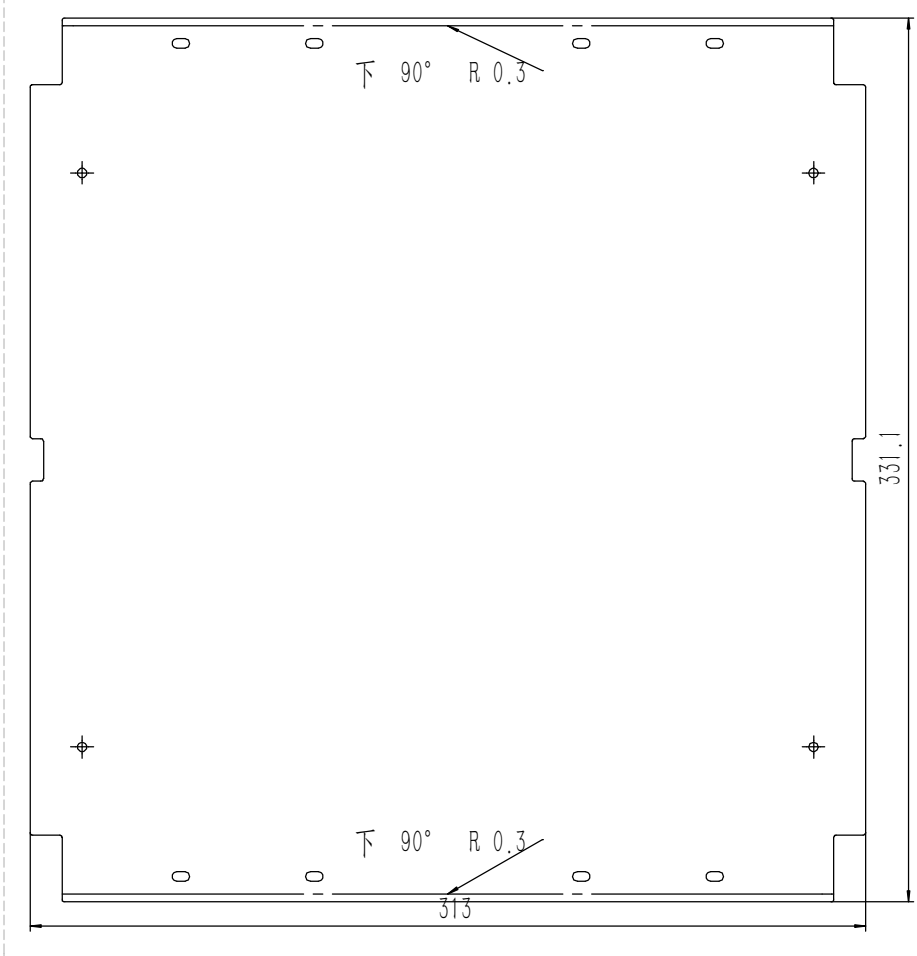


技术要求:

- 1、零件加工表面不应有划痕、擦伤等损伤零件表面的缺陷;
- 2、去除毛刺飞边,锐角倒钝;
- 3、未标注尺寸见3D数模。

Tolerances (未注公差): 0.5 to 6 ± 0.1 6 to 30 ± 0.2 30 to 120 ± 0.3 120 to 400 ± 0.4	Material (材料):	5052-H32		YONGU 永固			
	Weight: (重量) (Kg):	0.699					
Break sharp edges (未注锐边倒角): Ch 0.05 to 0.25 x45°	Protection: (表面处理):			Drawing Number (图号): YG-TY-A12-007			
	Position tolerances (未注位置公差): ± 0.05	Part Name (零/部件名称): 前后面板-3U					
Angular tolerances (未注角度公差): <6° ± 10' <30° ± 20' <120° ± 30' >120° ± 1°	Drawn by (绘图):	莫永康	Date (日期):	2020.05.18	Size: (图幅):	A1	Sheet (页数): 1 / 1
	Signature by (批准):		Date (日期):		Scale (比例):	1:1	
	Check by (校对):		Date (日期):		Revision (版本):	A1	

钣金展开及折弯方向参考图 (视图比例1:1)



业务代码:

技术要求:

- 1、零件加工表面不应有划痕、擦伤等损伤零件表面的缺陷;
- 2、去除毛刺飞边,锐角倒钝;
- 3、未标注尺寸见3D数模。

Break sharp edges (未注锐边倒角): Ch 0.05 to 0.25 x45°	Angular tolerances (未注角度公差): <6° ± 10' <30° ± 20' <120° ± 30' >120° ± 1°
Position tolerances (未注位置公差): ± 0.05	

Tolerances (未注公差): 0.5 to 6 ± 0.1 6 to 30 ± 0.2 30 to 120 ± 0.3 120 to 400 ± 0.4	Material (材料): 5052-H32	YONGU 永固
	Weight: (重量) (Kg): 0.410	
	Protection: (表面处理):	
	Part Name (零/部件名称): A垫板	Drawing Number (图号): YG-TY-A13-007
Drawn by (绘图): 许宏彬	Date (日期): 2020.09.17	Size: (图幅): A1
Check by (校对):	Date (日期):	Scale (比例): 1:1
Signature by (批准):	Date (日期):	Revision (版本): A1
		Sheet (页数): 1 / 1