

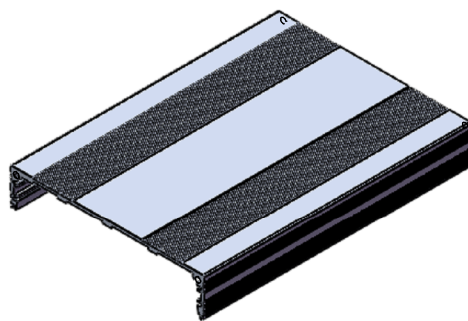
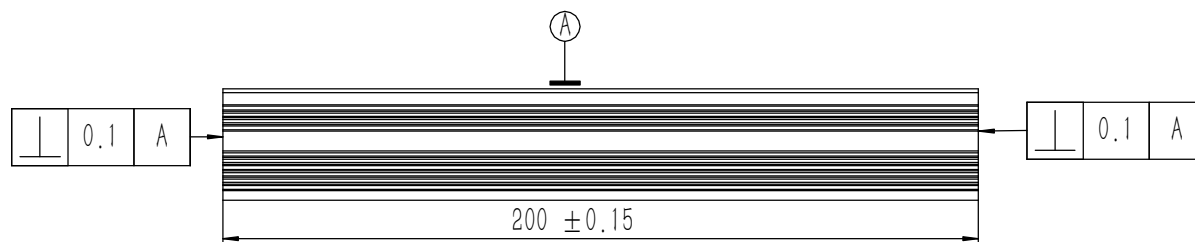
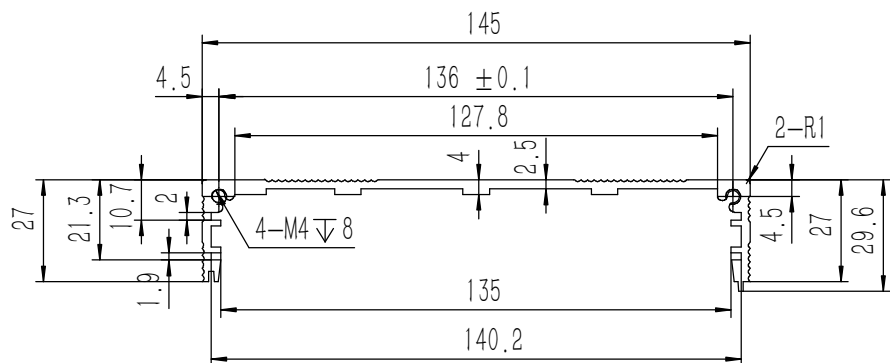
序号	图号	名称	材料	数量	单重	备注
5	GB-T-70.1-2000-S-NL-M4X8	不锈钢内六角杯头螺丝 M4X8	SUS 304	4	0.002	
4	GB-T-819.1-2000-C-BE-M4X8	碳钢发黑十字沉头螺丝 M4X8	普通碳钢	4	0.001	
3	YG-W10C-0000-003	后面板	5052-H32	1	0.062	
2	YG-W10C-0000-002	前面板	5052-H32	1	0.196	
1	YG-W10C-0000-001	壳体	6063-T5	2	0.310	

技术要求:

- 1、必须按照设计、工艺要求及本规定和有关标准进行装配;
- 2、所有零部件(包括外购、外协件)必须具有检验合格证方能进行装配;
- 3、零件在装配前必须清理和清洗干净,不得有毛刺、飞边、氧化皮、锈蚀、切屑、砂粒、灰尘和油污等,并应符合相应清洁度要求;
- 4、装配过程中零件不得磕碰、划伤和锈蚀;
- 5、油漆未干的零件不得进行装配;
- 6、相对运动的零件,装配时接触面间应加润滑油脂;
- 7、各零、部件装配后相对位置应准确。

Break sharp edges (未注锐边倒角): Ch 0.05 to 0.25 x45°	Angular tolerances (未注角度公差): <6° ± 10' <30° ± 20' <120° ± 30' >120° ± 1°
Position tolerances (未注位置公差): ±0.05	

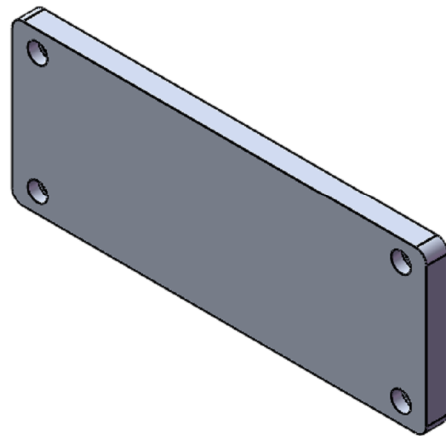
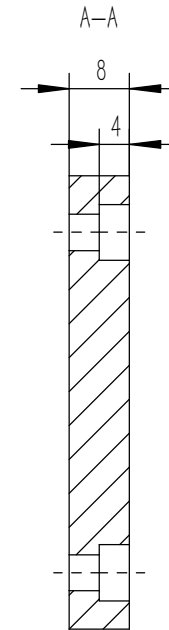
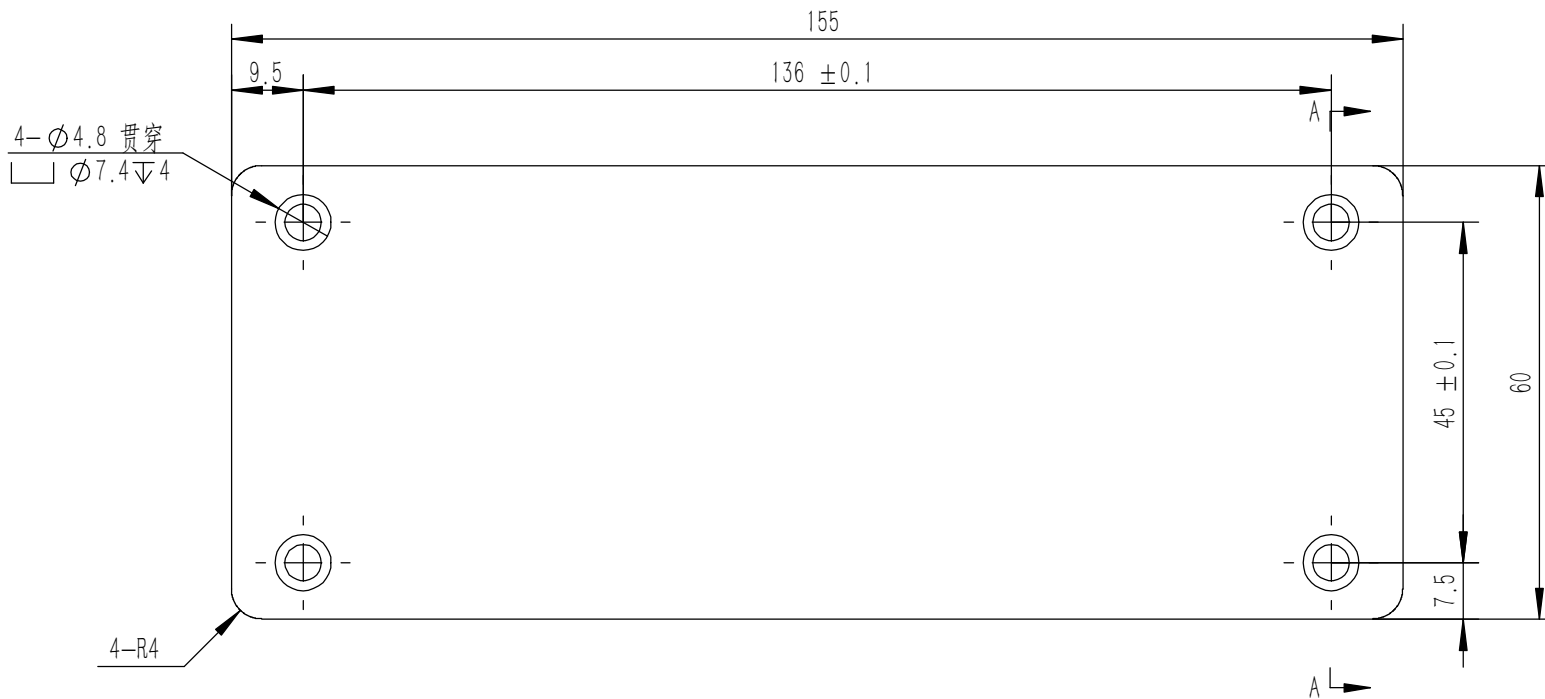
Tolerances (未注公差): 0.5 to 6 ± 0.1 6 to 30 ± 0.2 30 to 120 ± 0.3 120 to 400 ± 0.4		Material (材料): (装配图)			
		Weight: (重量) (Kg): 0.889			
		Protection: (表面处理):			
		Part Name (零/部件名称):		Drawing Number (图号):	
		W10C功放		YG-W10C-0000-000	
Drawn by (绘图): 莫永康		Date (日期): 2020.05.16		Size: (图幅): A2	
Check by (校对):		Date (日期):		Scale (比例): 1:1	
Signature by (批准):		Date (日期):		Revision (版本): A1	
				Sheet (页数): 1 / 1	



技术要求:

- 1、零件加工表面不应有划痕、擦伤等损伤零件表面的缺陷;
- 2、去除毛刺飞边, 锐角倒钝;
- 3、未标注尺寸见3D数模。

Tolerances (未注公差):	0.5 to 6	± 0.1	Material (材料):	6063-T5						
	6 to 30	± 0.2	Weight: (重量) (Kg):	0.310						
30 to 120	± 0.3	Protection: (表面处理):								
120 to 400	± 0.4	Part Name (零/部件名称):	壳体		Drawing Number (图号):					
Break sharp edges (未注锐边倒角): Ch 0.05 to 0.25 x45°	Angular tolerances (未注角度公差):	<6° ± 10'	Drawn by (绘图):	莫永康	Date (日期):	2020.05.16	Size: (图幅):	A2		
Position tolerances (未注位置公差):	<30° ± 20'	<120° ± 30'	Check by (校对):		Date (日期):		Scale (比例):	1:1		Sheet (页数):
±0.05	>120° ± 1°		Signature by (批准):		Date (日期):		Revision (版本):	A1		1 / 1

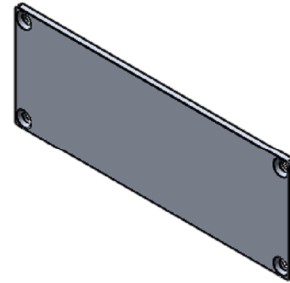
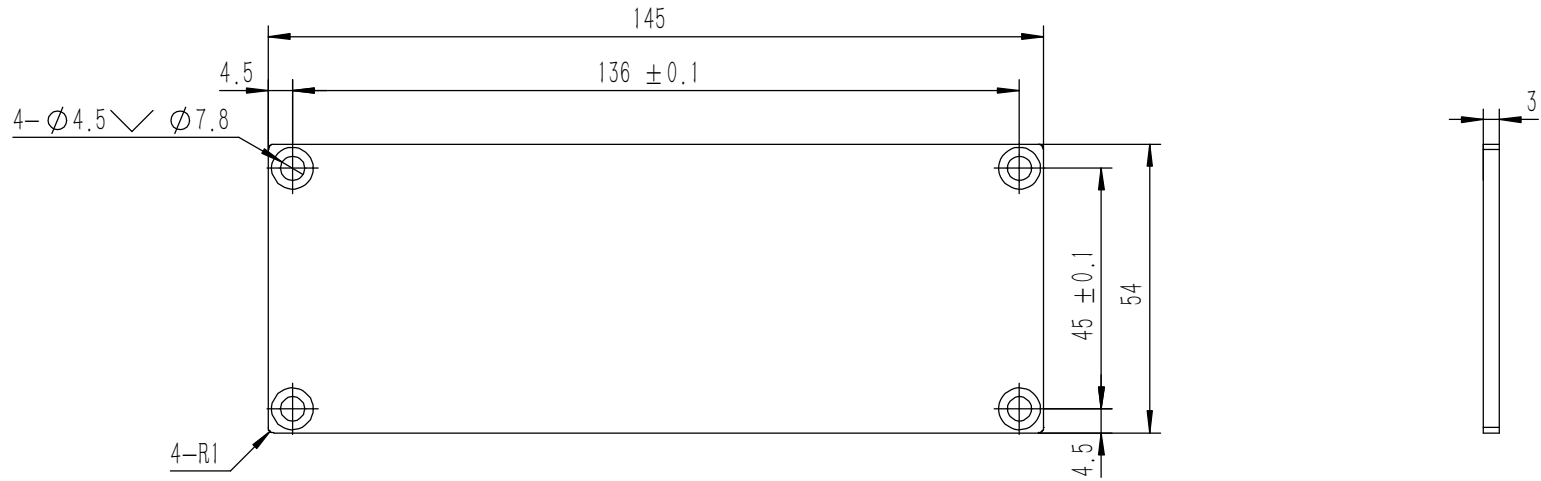


4-∅4.8 贯穿
∅7.4 √4

4-R4


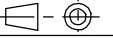
- 技术要求:
- 1、零件加工表面不应有划痕、擦伤等损伤零件表面的缺陷;
 - 2、去除毛刺飞边, 锐角倒钝;
 - 3、未标注尺寸见3D数模。

Tolerances (未注公差): 0.5 to 6 ± 0.1 6 to 30 ± 0.2 30 to 120 ± 0.3 120 to 400 ± 0.4	Material (材料): 5052-H32	YONGU 永固			
	Weight: (重量) (Kg) 0.196				
Break sharp edges (未注锐边倒角): Ch 0.05 to 0.25 x45°	Protection: (表面处理):	Part Name (零/部件名称): 前面板			
	Position tolerances (未注位置公差): ±0.05	Angular tolerances (未注角度公差): <6° ± 10' <30° ± 20' <120° ± 30' >120° ± 1°	Drawing Number (图号): YG-W10C-0000-002		
		Drawn by (绘图): 莫永康	Date (日期): 2020.05.16	Size: (图幅): A4	Sheet (页数): 1 / 1
		Check by (校对):	Date (日期):	Scale (比例): 1:1	
		Signature by (批准):	Date (日期):	Revision (版本): A1	



技术要求:

- 1、零件加工表面不应有划痕、擦伤等损伤零件表面的缺陷;
- 2、去除毛刺飞边, 锐角倒钝;
- 3、未标注尺寸见3D数模。

Tolerances (未注公差):	0.5 to 6	± 0.1	Material (材料):	5052-H32		YONGU 				
	6 to 30	± 0.2		Weight: (重量) (Kg)	0.062					
Break sharp edges (未注锐边倒角): Ch 0.05 to 0.25 x45°	30 to 120	± 0.3	Protection: (表面处理):				Drawing Number (图号):			
	120 to 400	± 0.4	Part Name (零/部件名称):	后面板				YG-W10C-0000-003		
Position tolerances (未注位置公差):	± 0.05		Angular tolerances (未注角度公差):	Drawn by (绘图):	莫永康	Date (日期):	2020.05.16	Size: (图幅):	A3	
	<6°	± 10'	<30°	± 20'	Check by (校对):	Date (日期):		Scale (比例):	1:1	Sheet (页数):
	<120°	± 30'	>120°	± 1°	Signature by (批准):	Date (日期):		Revision (版本):	A1	1 / 1