

6	GB-T-819.1-2000-C-NI-M3X6	碳钢镀镍十字沉头螺丝M3X6	普通碳钢	36	0.0004	
5	YG-TY-JM-001	角码30X30X1.5	普通碳钢	8	0.005	
4	YG-C05A-0000-002	后面板	6063-T5	1	0.376	
3	YG-C05A-0000-003	上下盖板	5052-H32	2	0.516	
2	YG-C05A-0000-004	侧板	6063-T5	2	0.363	
1	YG-C05A-0000-001	前面板	6063-T5	1	0.638	
序号	图号	名称	材料	数量	单重	备注

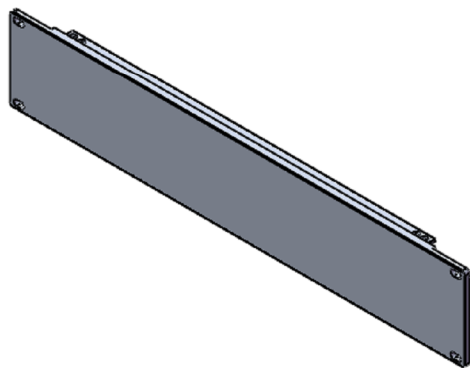
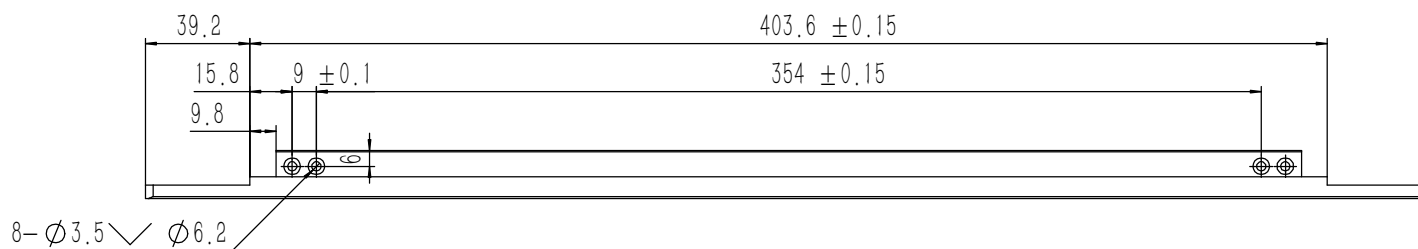
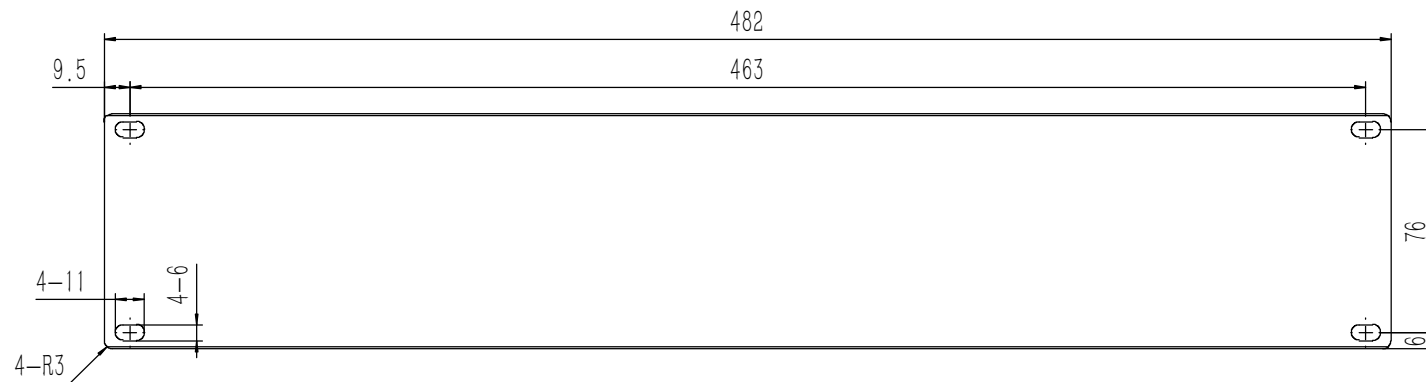
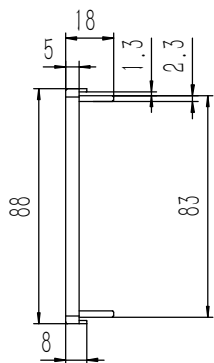
技术要求:

- 1、必须按照设计、工艺要求及本规定和有关标准进行装配;
- 2、所有零部件(包括外购、外协件)必须具有检验合格证方能进行装配;
- 3、零件在装配前必须清理和清洗干净,不得有毛刺、飞边、氧化皮、锈蚀、切屑、砂粒、灰尘和油污等,并应符合相应清洁度要求;
- 4、装配过程中零件不得磕碰、划伤和锈蚀;
- 5、油漆未干的零件不得进行装配;
- 6、相对运动的零件,装配时接触面间应加润滑油脂;
- 7、各零、部件装配后相对位置应准确。

Break sharp edges (未注锐边倒角): Ch 0.05 to 0.25 x45°	Angular tolerances (未注角度公差): <6° ± 10' <30° ± 20' <120° ± 30' >120° ± 1°
Position tolerances (未注位置公差): ± 0.05	

Tolerances (未注公差): 0.5 to 6 ± 0.1 6 to 30 ± 0.2 30 to 120 ± 0.3 120 to 400 ± 0.4	Material (材料): (装配图)
Weight: (重量) (Kg): 2.826	Protection: (表面处理):
Part Name (零/部件名称):	Part Name (零/部件名称): C05A机箱
Drawn by (绘图): 邓展锋	Date (日期): 2020.05.25
Check by (校对):	Date (日期):
Signature by (批准):	Date (日期):

YONGU 永固	
Material (材料):	Material (材料):
Weight: (重量) (Kg): 2.826	Weight: (重量) (Kg):
Protection: (表面处理):	Protection: (表面处理):
Part Name (零/部件名称):	Part Name (零/部件名称):
Part Name (零/部件名称): C05A机箱	Part Name (零/部件名称):
Drawing Number (图号):	Drawing Number (图号): YG-C05A-0000-000
Size (图幅): A0	Size (图幅): A0
Scale (比例): 1:1.3	Scale (比例): 1:1.3
Revision (版本): A1	Revision (版本): A1
Sheet (页数): 1 / 1	Sheet (页数): 1 / 1



技术要求:

- 1、零件加工表面不应有划痕、擦伤等损伤零件表面的缺陷;
- 2、去除毛刺飞边, 锐角倒钝;
- 3、未标注尺寸见3D数模。

Tolerances (未注公差):	Material (材料):	6063-T5
0.5 to 6 ± 0.1	Weight: (重量) (Kg):	0.638
6 to 30 ± 0.2	Protection: (表面处理):	
30 to 120 ± 0.3	Part Name (零/部件名称):	前面板
120 to 400 ± 0.4	Part Name (零/部件名称):	前面板

Break sharp edges (未注锐边倒角):	Angular tolerances (未注角度公差):	Material (材料):	6063-T5
Ch 0.05 to 0.25 x45°	<6° ± 10'	Weight: (重量) (Kg):	0.638
Position tolerances (未注位置公差):	<30° ± 20'	Protection: (表面处理):	
± 0.05	<120° ± 30'	Part Name (零/部件名称):	前面板
	>120° ± 1°	Part Name (零/部件名称):	前面板

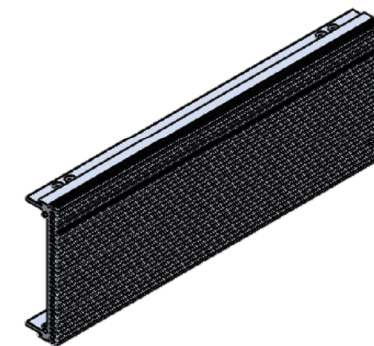
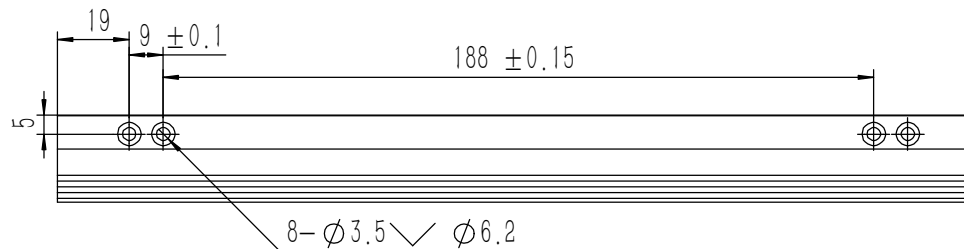
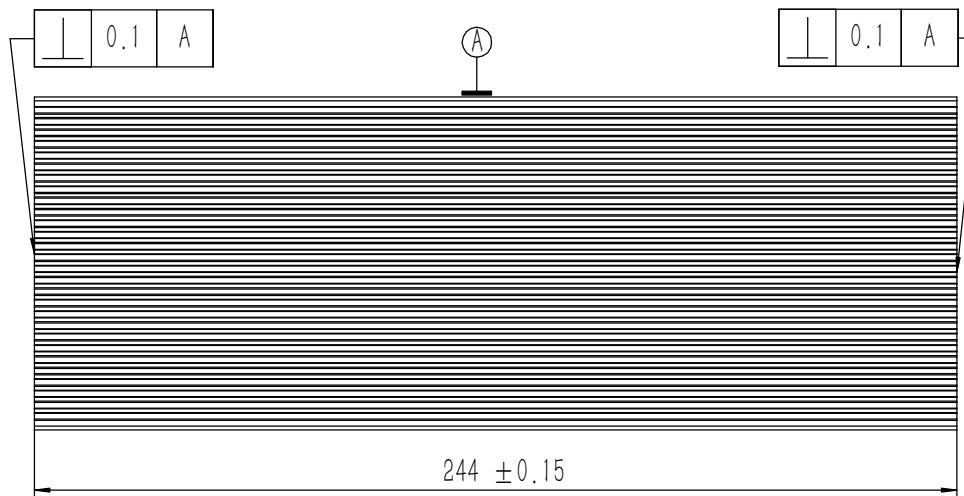
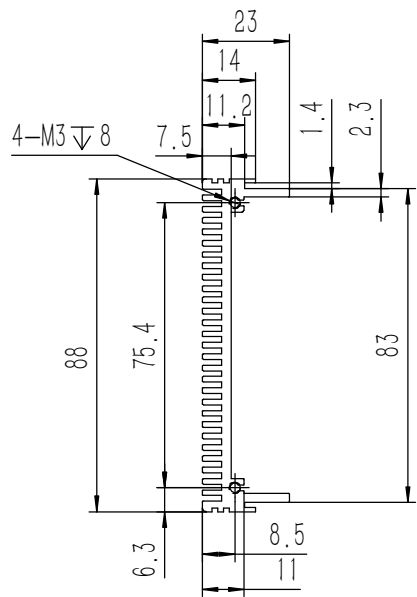
YONGU 永固		Drawing Number (图号):	YG-C05A-0000-001
Drawn by (绘图):	邓展锋	Date (日期):	2020.05.25
Check by (校对):		Date (日期):	
Signature by (批准):		Date (日期):	

Break sharp edges (未注锐边倒角):	Angular tolerances (未注角度公差):	Material (材料):	6063-T5	Weight: (重量) (Kg):	0.638	Protection: (表面处理):		Part Name (零/部件名称):	前面板	Drawing Number (图号):	YG-C05A-0000-001
Ch 0.05 to 0.25 x45°	<6° ± 10'	Weight: (重量) (Kg):	0.638	Protection: (表面处理):		Part Name (零/部件名称):	前面板	Part Name (零/部件名称):	前面板	Drawn by (绘图):	邓展锋
Position tolerances (未注位置公差):	<30° ± 20'	Part Name (零/部件名称):	前面板	Part Name (零/部件名称):	前面板	Date (日期):	2020.05.25	Date (日期):		Date (日期):	
± 0.05	<120° ± 30'	Part Name (零/部件名称):	前面板	Part Name (零/部件名称):	前面板	Date (日期):		Date (日期):		Date (日期):	
	>120° ± 1°	Part Name (零/部件名称):	前面板	Part Name (零/部件名称):	前面板	Date (日期):		Date (日期):		Date (日期):	



Sheet (页数):

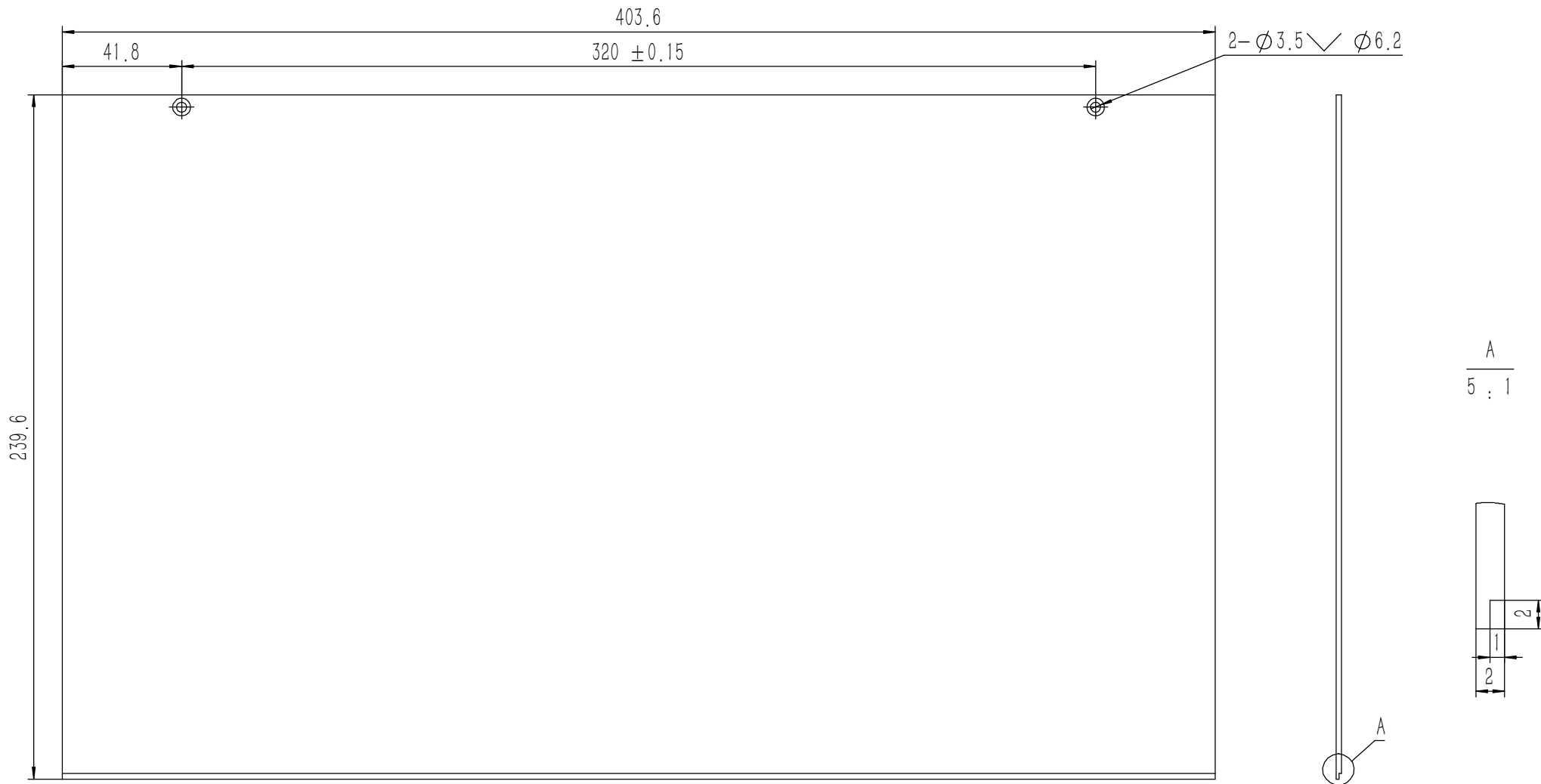
1 / 1



技术要求:

- 1、零件加工表面不应有划痕、擦伤等损伤零件表面的缺陷;
- 2、去除毛刺飞边, 锐角倒钝;
- 3、未标注尺寸见3D数模。

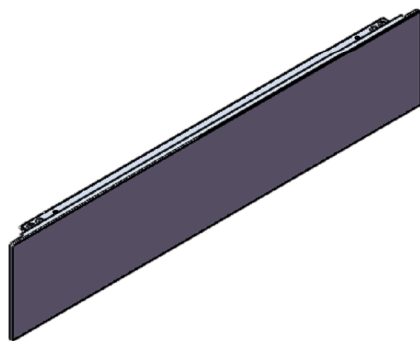
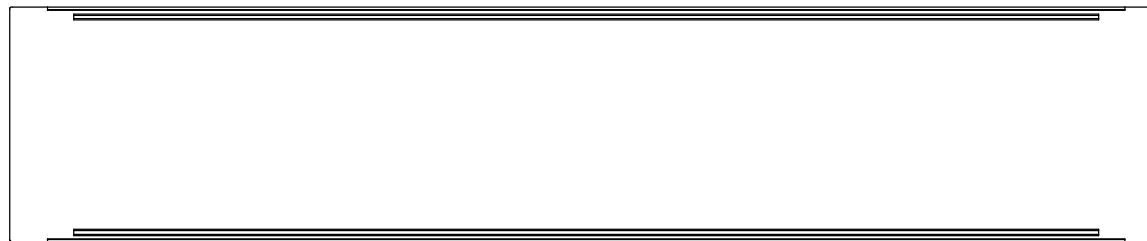
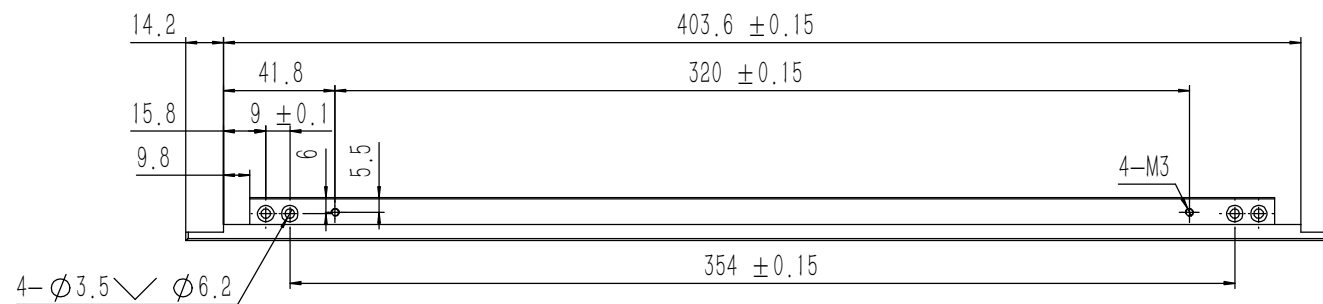
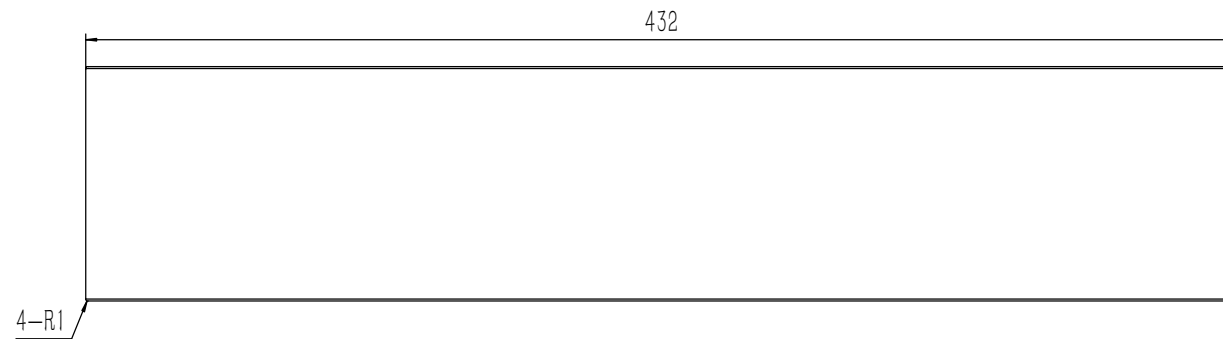
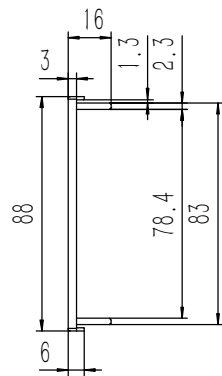
Tolerances (未注公差): 0.5 to 6 ± 0.1 6 to 30 ± 0.2 30 to 120 ± 0.3 120 to 400 ± 0.4	Material (材料): 6063-T5	YONGU 永固	Drawing Number (图号): YG-C05A-0000-004
	Weight: (重量) (Kg): 0.363		
Break sharp edges (未注锐边倒角): Ch 0.05 to 0.25 x45°	Protection: (表面处理):	Part Name (零/部件名称): 侧板	Size: (图幅): A2
Position tolerances (未注位置公差): ±0.05	Part Name (零/部件名称):		
Angular tolerances (未注角度公差): <6° ± 10' <30° ± 20' <120° ± 30' >120° ± 1°	Part Name (零/部件名称):	Drawn by (绘图): 邓展锋	Date (日期): 2020.05.25
	Part Name (零/部件名称):	Check by (校对):	Date (日期):
	Part Name (零/部件名称):	Signature by (批准):	Date (日期):
	Part Name (零/部件名称):	Revision (版本): A1	Sheet (页数): 1 / 1



技术要求:

- 1、零件加工表面不应有划痕、擦伤等损伤零件表面的缺陷;
- 2、去除毛刺飞边, 锐角倒钝;
- 3、未标注尺寸见3D数模。

Tolerances (未注公差):	0.5 to 6	± 0.1	Material (材料):	5052-H32		YONGU 永固			
	6 to 30	± 0.2	Weight: (重量) (Kg):	0.516					
Break sharp edges (未注锐边倒角): Ch 0.05 to 0.25 x45°	30 to 120	± 0.3	Protection: (表面处理):			Drawing Number (图号): YG-C05A-0000-003			
	120 to 400	± 0.4	Part Name (零/部件名称):	上下盖板					
Position tolerances (未注位置公差): ±0.05	Angular tolerances (未注角度公差):		Drawn by (绘图):	邓展锋	Date (日期):	2020.05.25	Size: (图幅):	A2	Sheet (页数): 1 / 1
	<6°	± 10'	Check by (校对):		Date (日期):		Scale (比例):	1:1	
	<30°	± 20'	Signature by (批准):		Date (日期):		Revision (版本):	A1	
	<120°	± 30'							
	>120°	± 1°							



技术要求:

- 1、零件加工表面不应有划痕、擦伤等损伤零件表面的缺陷;
- 2、去除毛刺飞边, 锐角倒钝;
- 3、未标注尺寸见3D数模。

Tolerances (未注公差):	
0.5 to 6	± 0.1
6 to 30	± 0.2
30 to 120	± 0.3
120 to 400	± 0.4

Material (材料):	6063-T5
Weight: (重量) (Kg):	0.376
Protection: (表面处理):	
Part Name (零/部件名称):	后面板



Break sharp edges (未注锐边倒角): Ch 0.05 to 0.25 x45°	Angular tolerances (未注角度公差):
	<6° ± 10'
	<30° ± 20'
Position tolerances (未注位置公差):	<120° ± 30'
± 0.05	>120° ± 1°

Drawing Number (图号):		YG-C05A-0000-002	
Drawn by (绘图): 邓展锋	Date (日期): 2020.05.25	Size: (图幅): A1	Sheet (页数):
Check by (校对):	Date (日期):	Scale (比例): 1:1	
Signature by (批准):	Date (日期):	Revision (版本): A1	1 / 1