

9	GB-T-819.1-2000-C-BE-M3X16	碳钢发黑十字沉头螺丝M3X16	普通碳钢	12	0.0009	
8	YG-TY-JM-001	角码	普通碳钢	4	0.005	
7	GB-T-819.1-2000-C-BE-M4X8	碳钢发黑十字沉头螺丝 M4X8	普通碳钢	4	0.001	
6	YG-G17B-0000-003	盖板	5052-H32	2	0.649	
5	YG-G17B-0000-004	侧板	6063-T5	2	0.540	
4	YG-G17B-0000-002	后面板	6063-T5	1	0.548	
3	GB-T-819.1-2000-C-BE-M3X6	碳钢发黑十字沉头螺丝M3X6	普通碳钢	16	0.0004	
2	YG-G17B-0000-001	前面板	6063-T5	1	0.523	
1	YG-G17B-0000-005	拉手	6063-T5	2	0.116	
序号	图号	名称	材料	数量	单重	备注

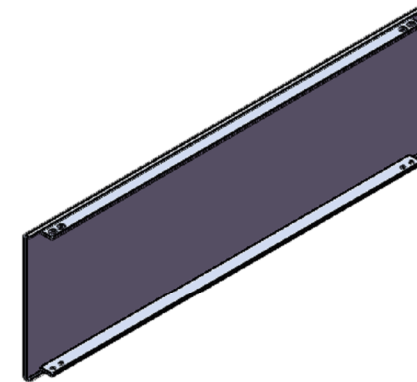
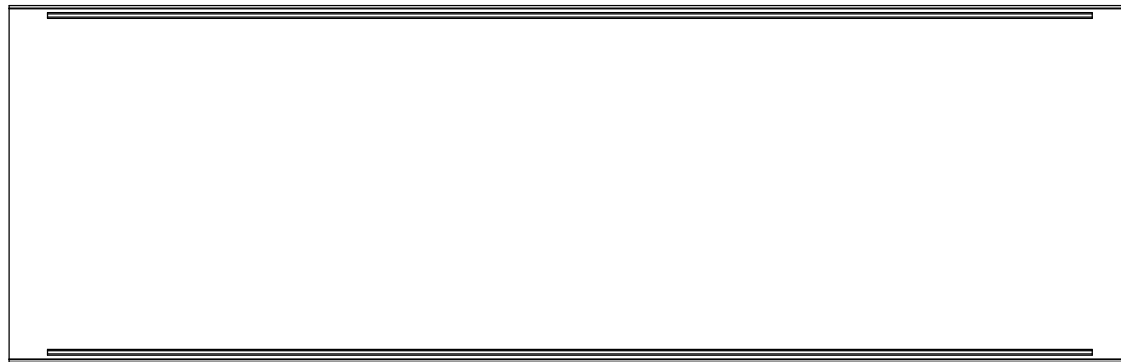
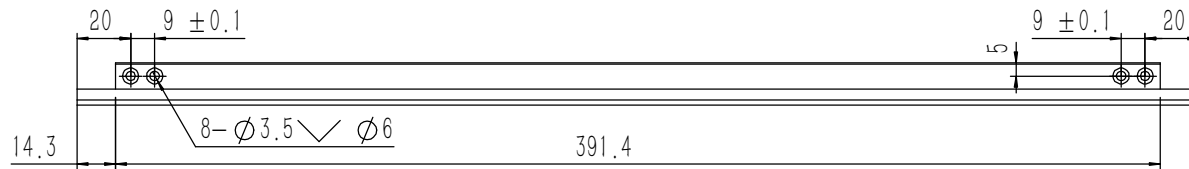
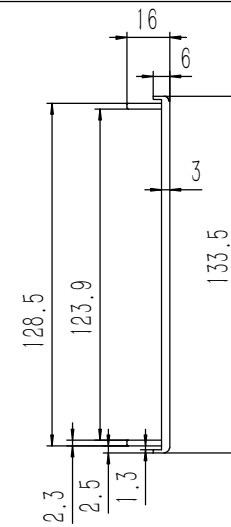
- 技术要求:
- 1、必须按照设计、工艺要求及本规定和有关标准进行装配;
 - 2、所有零部件(包括外购、外协件)必须具有检验合格证方能进行装配;
 - 3、零件在装配前必须清理和清洗干净,不得有毛刺、飞边、氧化皮、锈蚀、切屑、砂粒、灰尘和油污等,并应符合相应清洁度要求;
 - 4、装配过程中零件不得磕碰、划伤和锈蚀;
 - 5、油漆未干的零件不得进行装配;
 - 6、相对运动的零件,装配时接触面间应加润滑油脂;
 - 7、各零、部件装配后相对位置应准确。

Tolerances (未注公差): 0.5 to 6 ± 0.1 6 to 30 ± 0.2 30 to 120 ± 0.3 120 to 400 ± 0.4	Material (材料):	(装配图)	YONGU 永固				
	Weight: (重量) (Kg):	3.722					
Break sharp edges (未注锐边倒角): Ch 0.05 to 0.25 x45°	Protection: (表面处理):		Drawing Number (图号): YG-G17B-0000-000				
	Angular tolerances (未注角度公差): <6° ± 10' <30° ± 20' <120° ± 30' >120° ± 1°	Part Name (零/部件名称):		G17B机箱			
Position tolerances (未注位置公差): ± 0.05	Drawn by (绘图):	莫永康	Date (日期):	2020.05.29	Size (图幅):	A0	
	Check by (校对):		Date (日期):		Scale (比例):	1:1.5	
	Signature by (批准):		Date (日期):		Revision (版本):	A1	1 / 1

⊥ 0.1 A



⊥ 0.1 A



技术要求:

- 1、零件加工表面不应有划痕、擦伤等损伤零件表面的缺陷;
- 2、去除毛刺飞边, 锐角倒钝;
- 3、未标注尺寸见3D数模。

Tolerances (未注公差):	
0.5 to 6	± 0.1
6 to 30	± 0.2
30 to 120	± 0.3
120 to 400	± 0.4

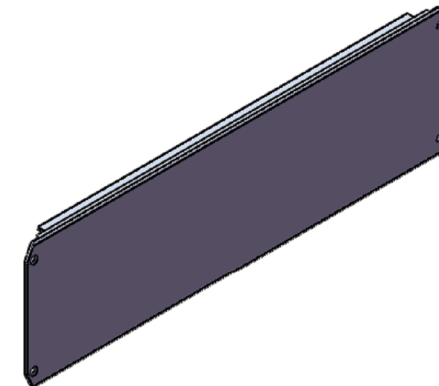
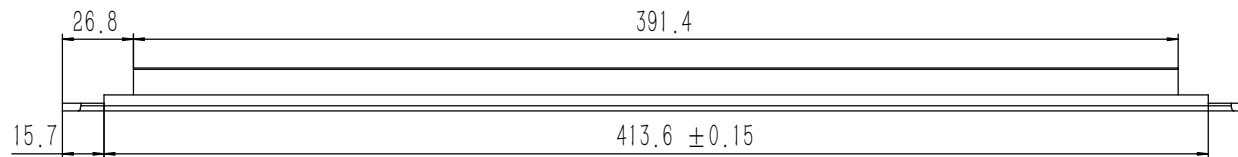
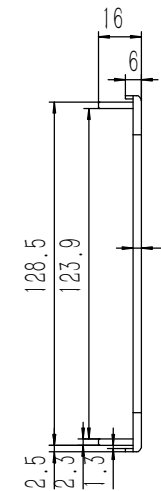
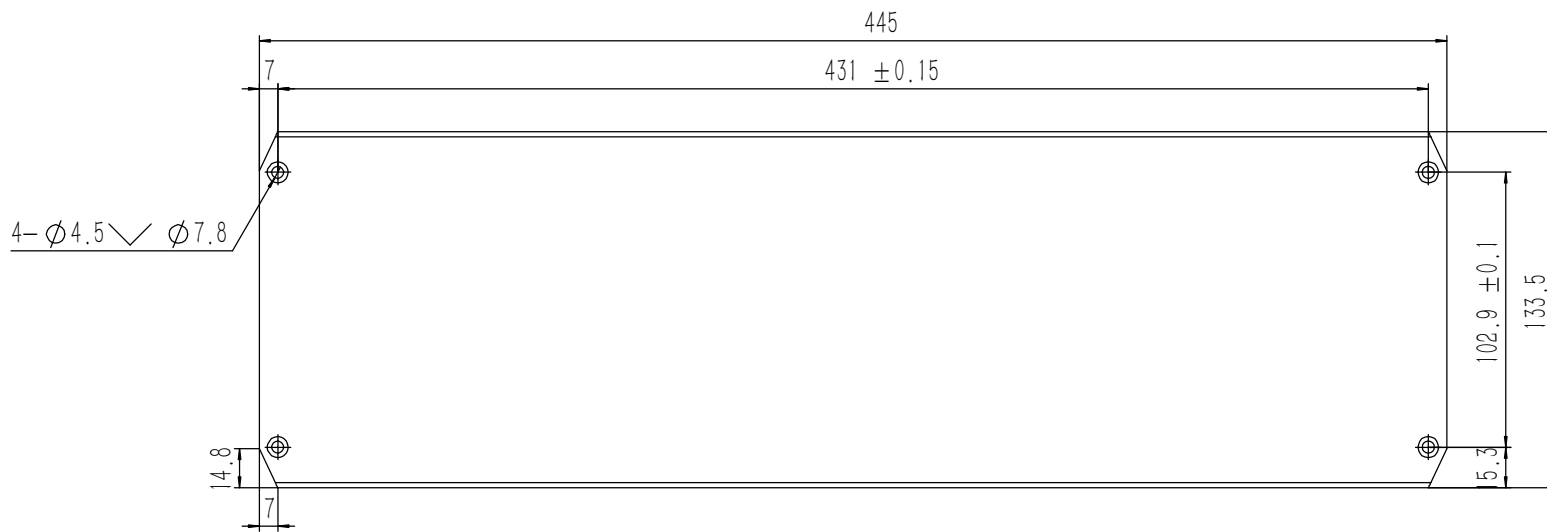
Material (材料):	6063-T5
Weight: (重量) (Kg):	0.523
Protection: (表面处理):	
Part Name (零/部件名称):	前面板



Break sharp edges (未注锐边倒角): Ch 0.05 to 0.25 x45°	Angular tolerances (未注角度公差):
	<6° ± 10'
	<30° ± 20'
	<120° ± 30'
	>120° ± 1°

Position tolerances (未注位置公差):	± 0.05
----------------------------------	--------

Drawing Number (图号):		YG-G17B-0000-001	
Drawn by (绘图): 莫永康	Date (日期): 2020.05.29	Size: (图幅): A1	Sheet (页数): 1 / 1
Check by (校对):	Date (日期):	Scale (比例): 1:1	Revision (版本): A1
Signature by (批准):	Date (日期):		



技术要求:

- 1、零件加工表面不应有划痕、擦伤等损伤零件表面的缺陷;
- 2、去除毛刺飞边, 锐角倒钝;
- 3、未标注尺寸见3D数模。

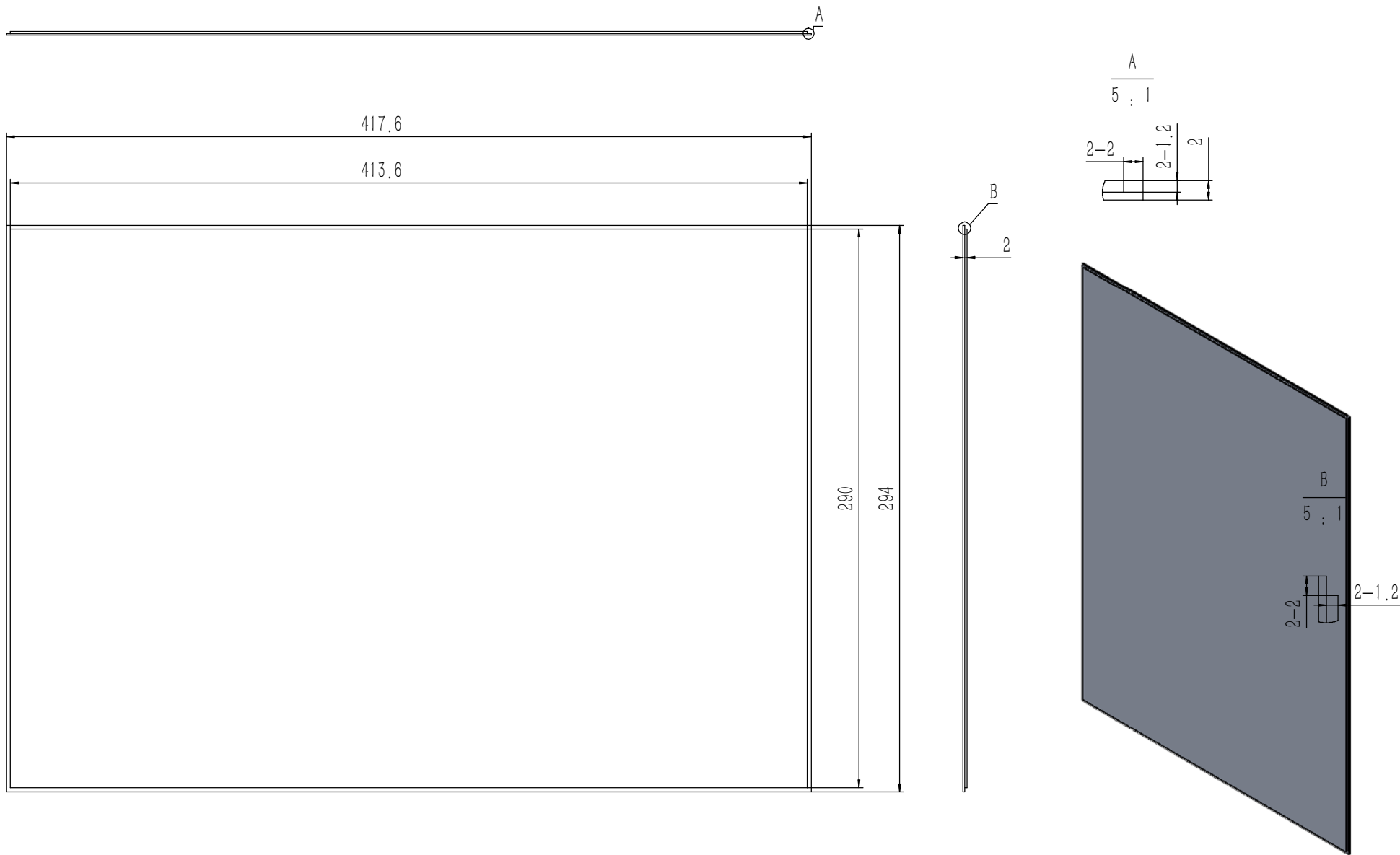
Tolerances (未注公差):	
0.5 to 6	± 0.1
6 to 30	± 0.2
30 to 120	± 0.3
120 to 400	± 0.4

Material (材料):	6063-T5
Weight: (重量) (Kg):	0.548
Protection: (表面处理):	
Part Name (零/部件名称):	后面板

YONGU 永固	
Drawing Number (图号):	
YG-G17B-0000-002	

Break sharp edges (未注锐边倒角): Ch 0.05 to 0.25 x45°	Angular tolerances (未注角度公差):
<6°	$\pm 10'$
<30°	$\pm 20'$
<120°	$\pm 30'$
>120°	$\pm 1^\circ$
Position tolerances (未注位置公差):	± 0.05

Drawn by (绘图): 莫永康	Date (日期): 2020.05.29	Size: (图幅): A1	Sheet (页数): 1 / 1
Check by (校对):	Date (日期):	Scale (比例): 1:1	
Signature by (批准):	Date (日期):	Revision (版本): A1	

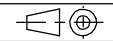


技术要求:

- 1、零件加工表面不应有划痕、擦伤等损伤零件表面的缺陷;
- 2、去除毛刺飞边,锐角倒钝;
- 3、未标注尺寸见3D数模。

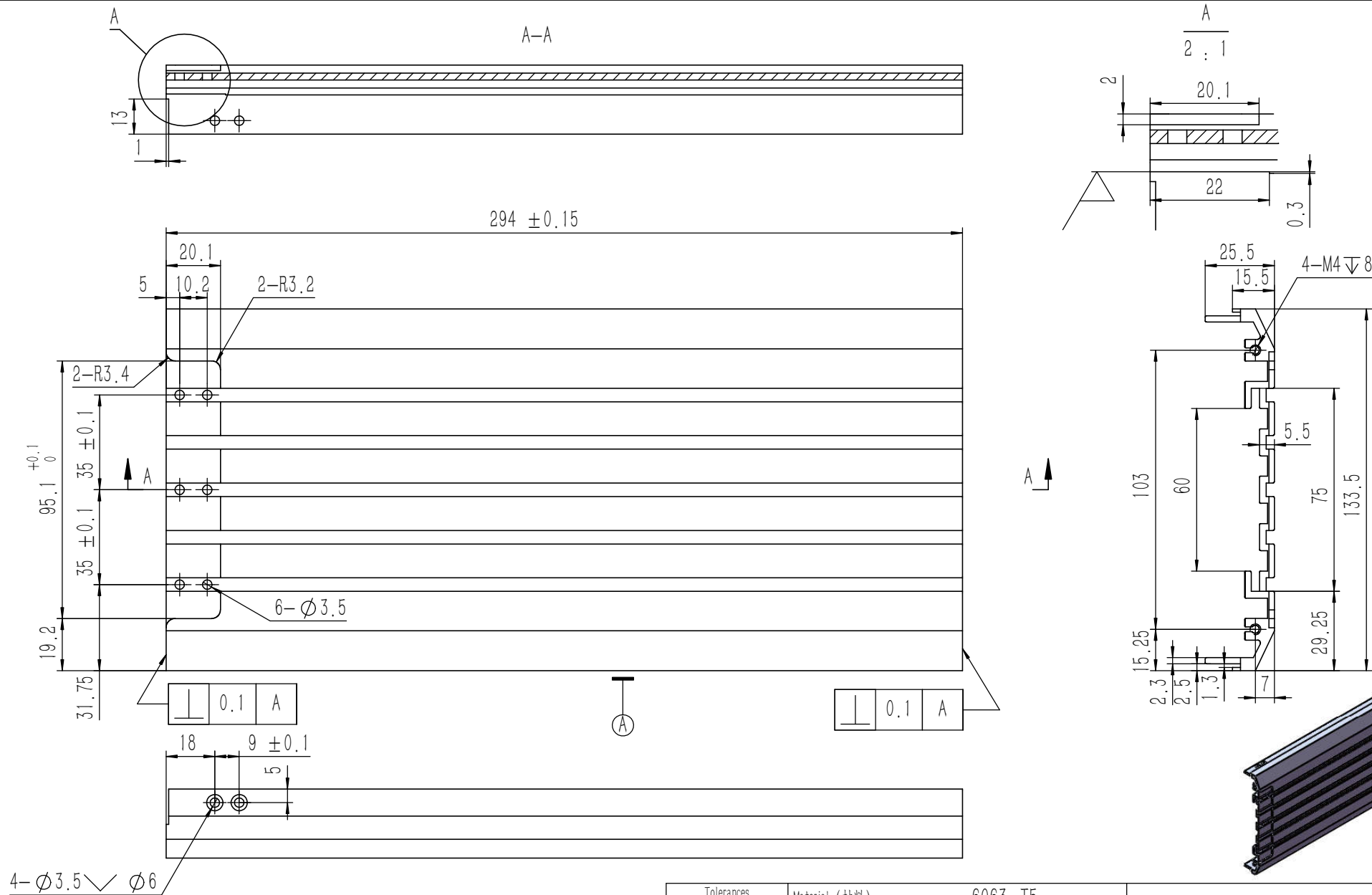
Tolerances (未注公差): 0.5 to 6 ± 0.1 6 to 30 ± 0.2 30 to 120 ± 0.3 120 to 400 ± 0.4	Material (材料):	5052-H32	
	Weight: (重量) (Kg):	0.649	
Break sharp edges (未注锐边倒角): Ch 0.05 to 0.25 x45°	Protection: (表面处理):		
	Part Name (零/部件名称):	盖板	
Position tolerances (未注位置公差): ± 0.05	Angular tolerances (未注角度公差): <6° ± 10' <30° ± 20' <120° ± 30' >120° ± 1°	Drawing Number (图号):	YG-G17B-0000-003
	Drawn by (绘图): 莫永康	Date (日期): 2020.05.29	Size: (图幅): A1
	Check by (校对):	Date (日期):	Scale (比例): 1:1
	Signature by (批准):	Date (日期):	Revision (版本): A1

YONGU 永固



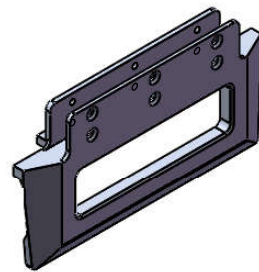
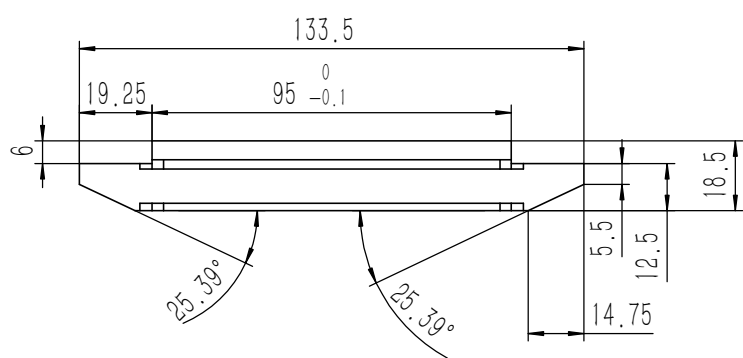
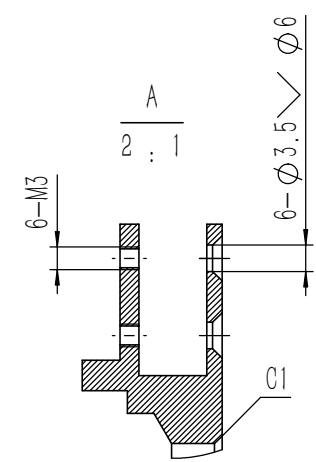
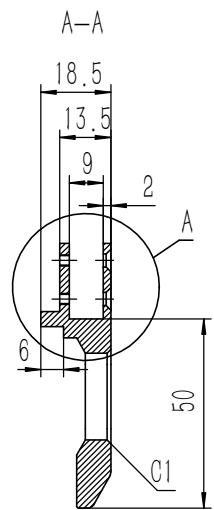
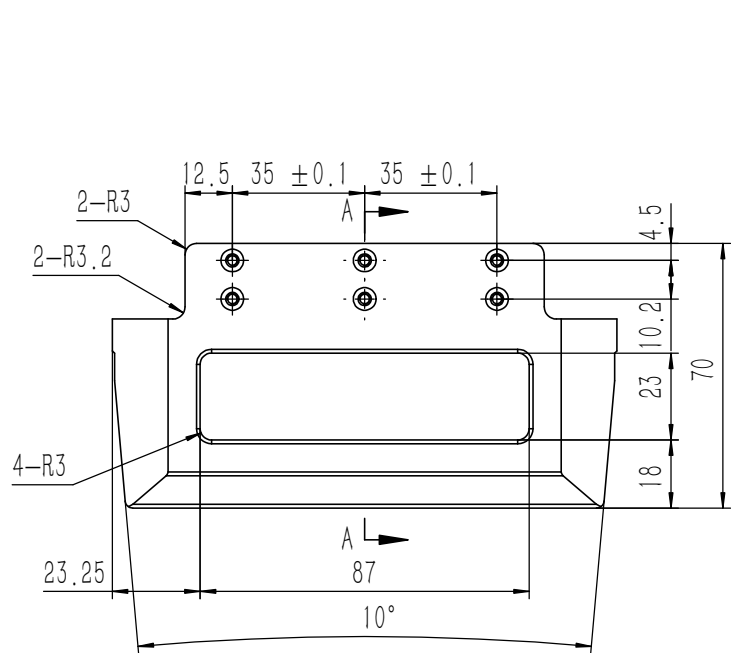
Sheet (页数):

1 / 1



- 技术要求:
- 1、零件加工表面不应有划痕、擦伤等损伤零件表面的缺陷;
 - 2、去除毛刺飞边, 锐角倒钝;
 - 3、未标注尺寸见3D数模。

Tolerances (未注公差):	0.5 to 6	± 0.1	Material (材料):	6063-T5	YONGU 永固
	6 to 30	± 0.2	Weight: (重量) (Kg):	0.540	
	30 to 120	± 0.3	Protection: (表面处理):		Drawing Number (图号): YG-G17B-0000-004
	120 to 400	± 0.4	Part Name (零/部件名称):	侧板	
Break sharp edges (未注锐边倒角): Ch 0.05 to 0.25 x45°	Angular tolerances (未注角度公差):	<6° ± 10'	Drawn by (绘图): 莫永康	Date (日期): 2020.05.29	Size (图幅): A2
Position tolerances (未注位置公差): ±0.05	<30° ± 20'	<120° ± 30'	Check by (校对):	Date (日期):	Scale (比例): 1:1
	>120° ± 1°		Signature by (批准):	Date (日期):	Revision (版本): A1
					Sheet (页数): 1 / 1



技术要求:
 1、零件加工表面不应有划痕、擦伤等损伤零件表面的缺陷;
 2、去除毛刺飞边,锐角倒钝;
 3、未标注尺寸见3D数模。

Break sharp edges (未注锐边倒角): Ch 0.05 to 0.25 x45°	Angular tolerances (未注角度公差): <6° ± 10' <30° ± 20' <120° ± 30' >120° ± 1°
Position tolerances (未注位置公差): ±0.05	

Tolerances (未注公差): 0.5 to 6 ± 0.1 6 to 30 ± 0.2 30 to 120 ± 0.3 120 to 400 ± 0.4	Material (材料): 6063-T5	
	Weight: (重量) (Kg): 0.116	
Protection: (表面处理):	Part Name (零/部件名称): 拉手	Drawing Number (图号): YG-G17B-0000-005
Signature by (签字):	Date (日期): 2020.05.29	Size: (图幅): A2
Signature by (校对):	Date (日期):	Scale (比例): 1:1
Signature by (批准):	Date (日期):	Revision (版本): A1
		Sheet (页数): 1 / 1