

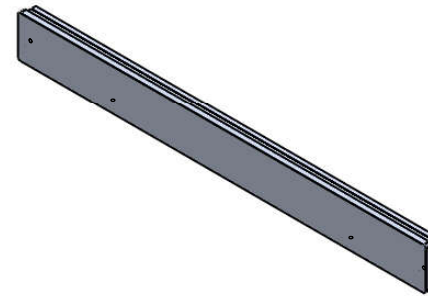
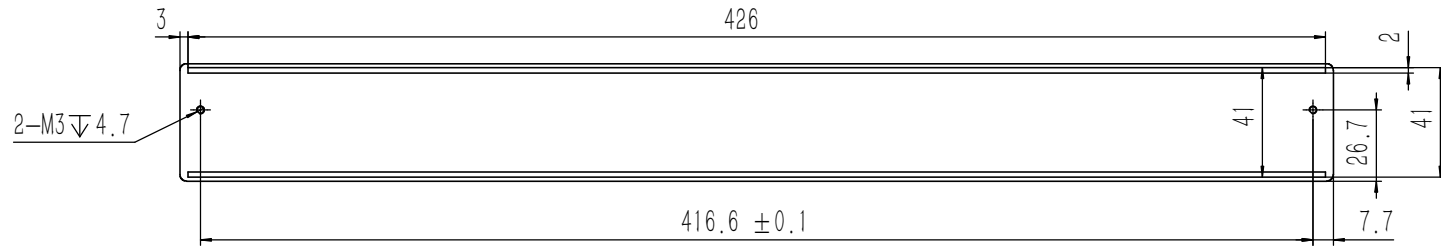
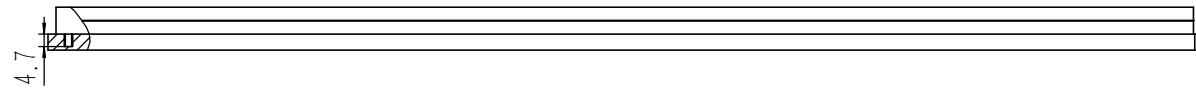
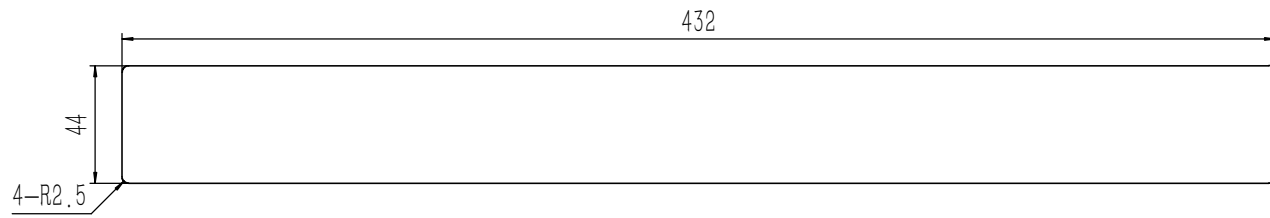
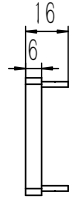
序号	图号	名称	材料	数量	单重	备注
9	YG-C25C-0000-003	上盖板	冷轧板	1	0.989	
8	GB-T-819.1-2000-C-NI-M3X6	碳钢镀镍十字沉头螺丝M3X6	普通碳钢	16	0.0004	
7	YG-C25C-0000-002	后面板	6063-T5	1	0.200	
6	S-M3-1-ZI	压铆螺母镀白锌M3X1	普通碳钢	10	0.3750	
5	YG-C25C-0000-004	底壳	冷轧板	1	1.134	
4	BS0-M3-5-ZI-D5.4	盲孔压铆螺柱镀白锌M3X5	普通碳钢	6	0.001	
3	GB-T-973-1976-C-NI-M3X4	碳钢镀镍十字大扁头螺丝M3X4	普通碳钢	2	0.0005	
2	YG-C25C-0000-005	安装耳	6063-T5	2	0.025	
1	YG-C25C-0000-001	前面板	6063-T5	1	0.354	

技术要求:

- 1、必须按照设计、工艺要求及本规定和有关标准进行装配;
- 2、所有零部件(包括外购、外协件)必须具有检验合格证方能进行装配;
- 3、零件在装配前必须清理和清洗干净,不得有毛刺、飞边、氧化皮、锈蚀、切屑、砂粒、灰尘和油污等,并应符合相应清洁度要求;
- 4、装配过程中零件不得磕碰、划伤和锈蚀;
- 5、油漆未干的零件不得进行装配;
- 6、相对运动的零件,装配时接触面间应加润滑油脂;
- 7、各零、部件装配后相对位置应准确。

Tolerances (未注公差):		Material (材料):		Drawing Number (图号):	
0.5 to 6	± 0.1	(装配图)		YG-C25C-0000-000	
6 to 30	± 0.2	Weight: (重量) (Kg): 2.741		Size: (图幅): A0	
30 to 120	± 0.3	Protection: (表面处理):		Scale (比例): 1:1	
120 to 400	± 0.4	Part Name (零/部件名称):		Sheet (页数):	
Break sharp edges (未注锐边倒角): Ch 0.05 to 0.25 x45°		C25C机箱		1 / 1	
Angular tolerances (未注角度公差):		Date (日期): 2020.05.26		Revision (版本): A2	
<6° ± 10'		Drawn by (绘图): 邓展锋		Signature by (批准):	
<30° ± 20'		Date (日期):		Date (日期):	
<120° ± 30'		Signature by (批准):		Date (日期):	
>120° ± 1°		Date (日期):		Date (日期):	

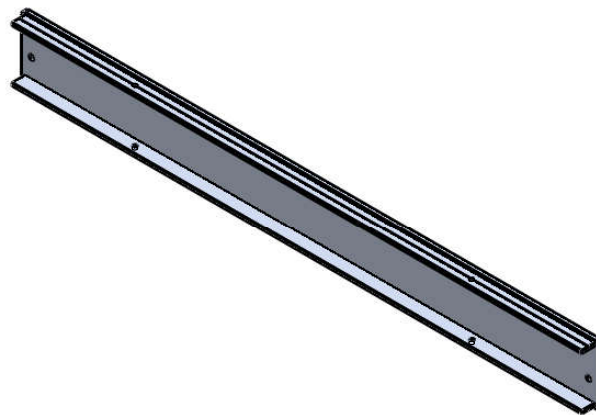
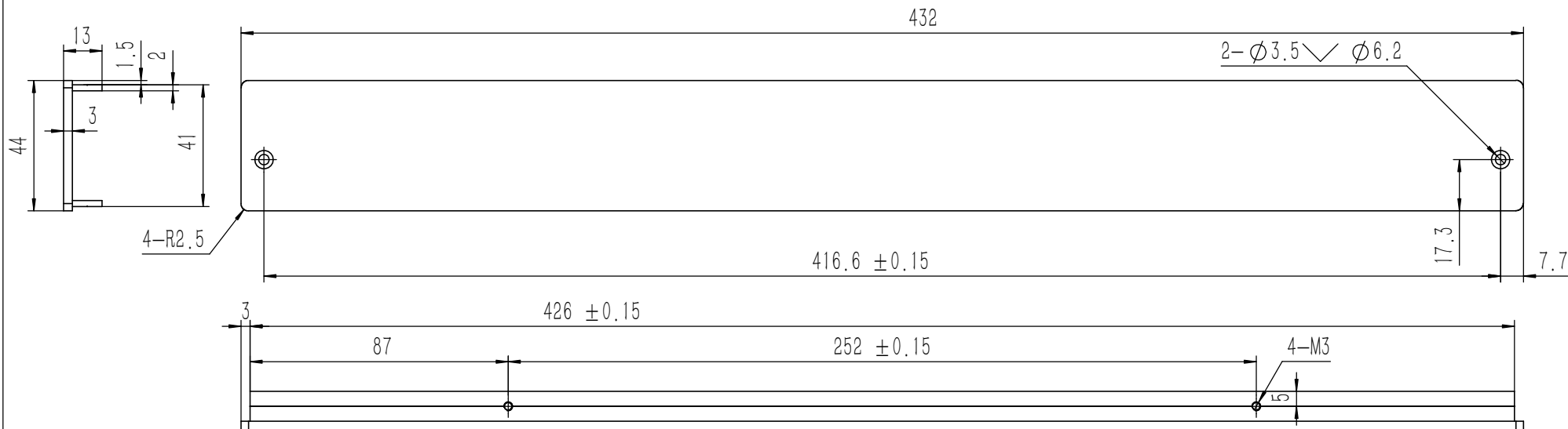




技术要求:

- 1、零件加工表面不应有划痕、擦伤等损伤零件表面的缺陷;
- 2、去除毛刺飞边, 锐角倒钝;
- 3、未标注尺寸见3D数模。

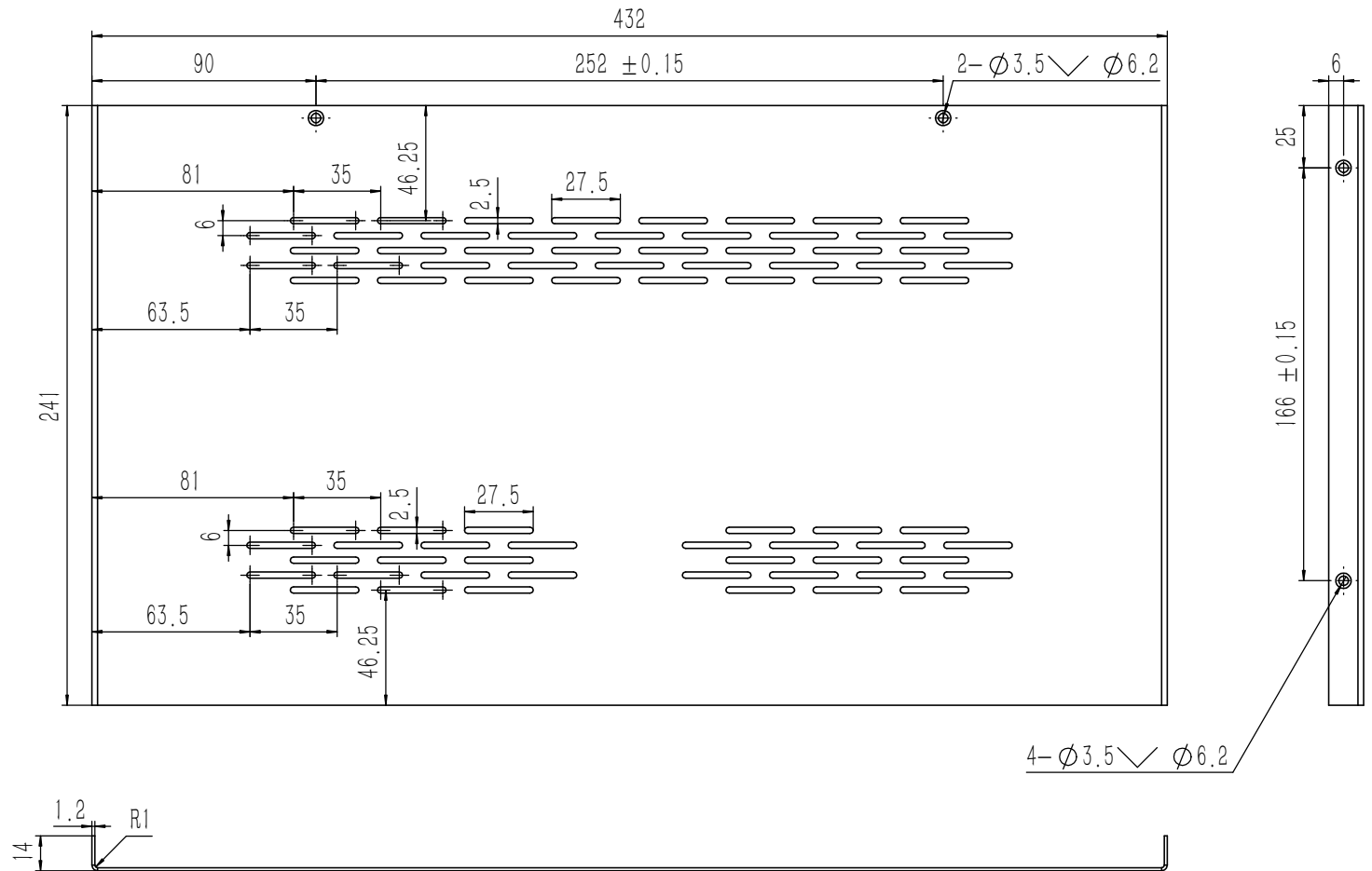
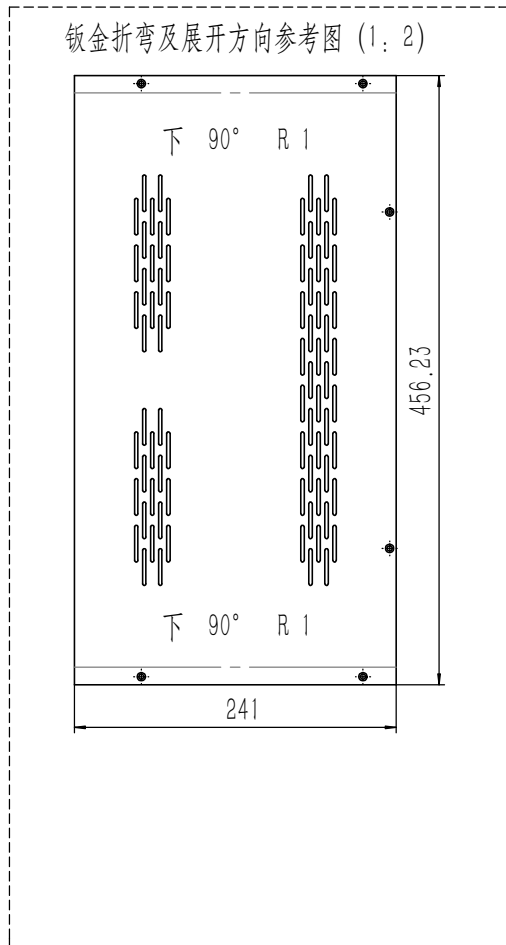
Break sharp edges (未注锐边倒角): Ch 0.05 to 0.25 x45°	Angular tolerances (未注角度公差): <6° ± 10' <30° ± 20' <120° ± 30' >120° ± 1°	Material (材料):	6063-T5		YONGU 永固
		Weight: (重量) (Kg):	0.354		
Position tolerances (未注位置公差): ±0.05		Protection: (表面处理):			Drawing Number (图号): YG-C25C-0000-001
		Part Name (零/部件名称):	前面板		
		Drawn by (绘图): 邓展锋	Date (日期): 2020.05.26	Size: (图幅): A1	Sheet (页数): 1 / 1
		Check by (校对):	Date (日期):	Scale (比例): 1:1	
		Signature by (批准):	Date (日期):	Revision (版本): A1	



技术要求:

- 1、零件加工表面不应有划痕、擦伤等损伤零件表面的缺陷;
- 2、去除毛刺飞边, 锐角倒钝;
- 3、未标注尺寸见3D数模。

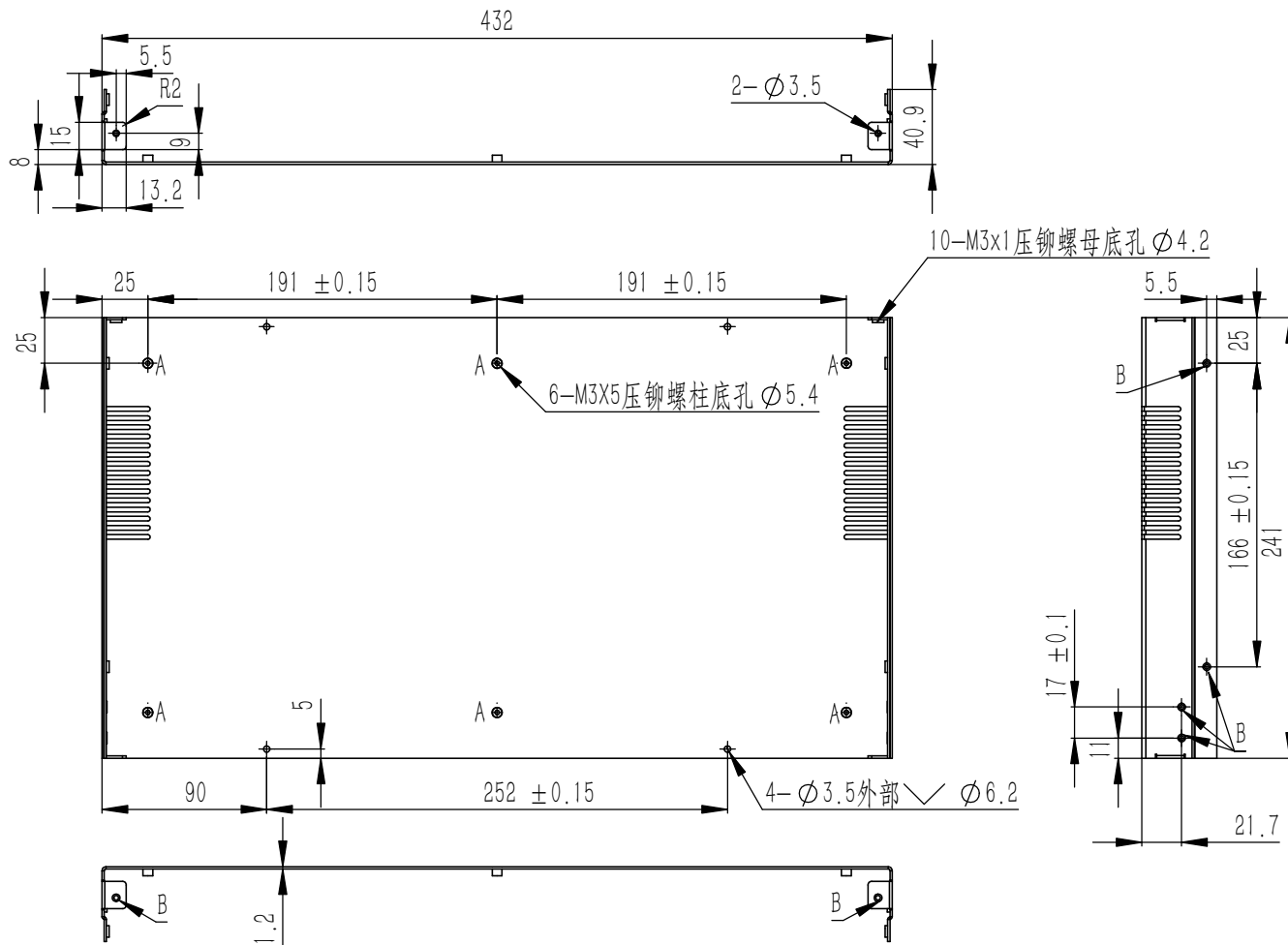
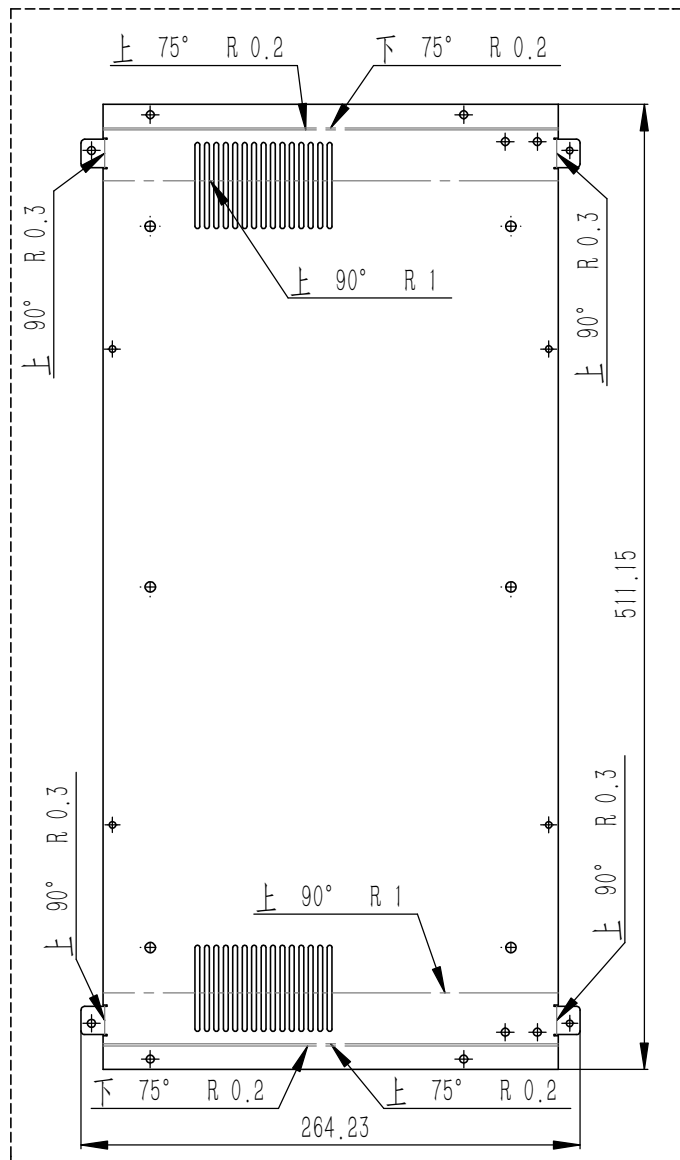
Tolerances (未注公差):	0.5 to 6	± 0.1	Material (材料):	6063-T5	
	6 to 30	± 0.2	Weight: (重量) (Kg):	0.200	
30 to 120	± 0.3	120 to 400	± 0.4	Protection: (表面处理):	
Break sharp edges (未注锐边倒角): Ch 0.05 to 0.25 x45°	Angular tolerances (未注角度公差):	<6°	± 10'	Part Name (零/部件名称):	Drawing Number (图号):
Position tolerances (未注位置公差):	<30°	± 20'	<120°	± 30'	YG-C25C-0000-002
±0.05	>120°	± 1°	后面板		Size: (图幅): A2
			Drawn by (绘图): 邓展锋	Date (日期): 2020.05.26	Scale (比例): 1:1
			Check by (校对):	Date (日期):	Revision (版本): A1
			Signature by (批准):	Date (日期):	Sheet (页数): 1 / 1



技术要求:

- 1、零件加工表面不应有划痕、擦伤等损伤零件表面的缺陷;
- 2、去除毛刺飞边, 锐角倒钝;
- 3、未标注尺寸见3D数模。

Tolerances (未注公差): 0.5 to 6 ± 0.1 6 to 30 ± 0.2 30 to 120 ± 0.3 120 to 400 ± 0.4	Material (材料): 冷轧板	YONGU 永固	Drawing Number (图号): YG-C25C-0000-003		
	Weight: (重量) (Kg): 0.989		Part Name (零/部件名称): 上盖板		
Break sharp edges (未注锐边倒角): Ch 0.05 to 0.25 x45°	Protection: (表面处理):	Drawn by (绘图): 邓展锋	Date (日期): 2020.05.26	Size: (图幅): A1	Sheet (页数): 1 / 1
Position tolerances (未注位置公差): ±0.05	Part Name (零/部件名称): 上盖板	Check by (校对):	Date (日期):	Scale (比例): 1:1	
Angular tolerances (未注角度公差): <6° ± 10' <30° ± 20' <120° ± 30' >120° ± 1°	Part Name (零/部件名称): 上盖板	Signature by (批准):	Date (日期):	Revision (版本): A2	



A: 压铆螺柱M3x5,底孔 $\phi 5.4$,共6处
 B: 压铆螺母镀锌M3x1,底孔 $\phi 4.2$,共10处

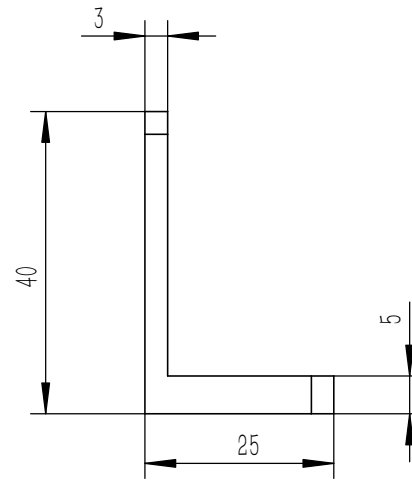
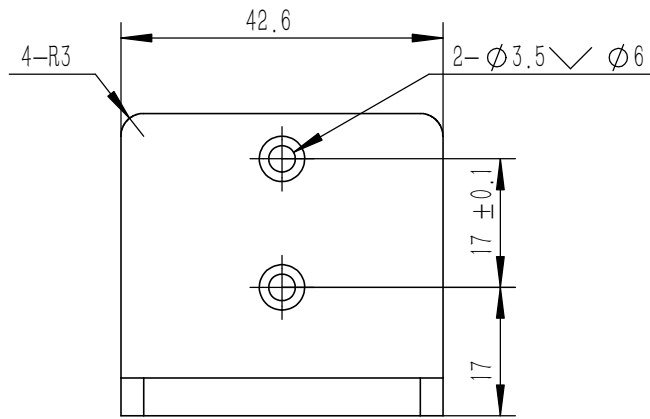
技术要求:

- 1、零件加工表面不应有划痕、擦伤等损伤零件表面的缺陷;
- 2、去除毛刺飞边,锐角倒钝;
- 3、未标注尺寸见3D数模。

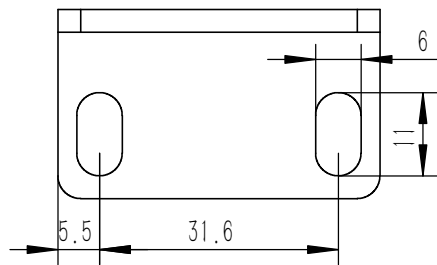
业务代码:

Tolerances (未注公差): 0.5 to 6 ± 0.1 6 to 30 ± 0.2 30 to 120 ± 0.3 120 to 400 ± 0.4	Material (材料):	5052-H32		YONGU 永固
	Weight: (重量) (Kg):	1.143		
Break sharp edges (未注锐边倒角): Ch 0.05 to 0.25 x45°	Protection: (表面处理):			
	Position tolerances (未注位置公差): ± 0.05	Part Name (零/部件名称):	底壳	
Angular tolerances (未注角度公差): <6° ± 10' <30° ± 20' <120° ± 30' >120° ± 1°	Drawn by (绘图):	邓展锋	Date (日期):	2020.05.25
	Check by (校对):		Date (日期):	
	Signature by (批准):		Date (日期):	
		Size (图幅):	A0	Sheet (页数):
		Scale (比例):	1:1	1 / 1
		Revision (版本):	A2	

Drawing Number (图号):
YG-C25C-0000-004




全部 $\sqrt{3.2}$



技术要求:

- 1、零件加工表面不应有划痕、擦伤等损伤零件表面的缺陷;
- 2、去除毛刺飞边,锐角倒钝;
- 3、未标注尺寸见3D数模。

Tolerances (未注公差): 0,5 to 6 ± 0,1 6 to 30 ± 0,2 30 to 120 ± 0,3 120 to 400 ± 0,4	Material (材料): 6063-T5	YONGU 	
	Weight: (重量) (Kg) 0.025		
Break sharp edges (未注锐边倒角): Ch 0,05 to 0,25 x45°	Protection: (表面处理):	Drawing Number (图号): YG-C25C-0000-005	
	Angular tolerances (未注角度公差): <6° ± 10' <30° ± 20' <120° ± 30' >120° ± 1°	Part Name (零/部件名称): 安装耳	Scale (图幅): A4
Position tolerances (未注位置公差): ±0,05	Drawn by (绘图): 许宏彬	Date (日期): 2020.09.04	Sheet (页数): 1 / 1
	Check by (校对):	Date (日期):	Revision (版本): A1
	Signature by (批准):	Date (日期):	