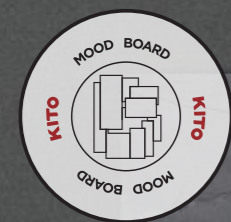




Welcome to a world without boundaries.
A Theory That Built our Company.

Guangdong KITO Ceramics Group Co., Ltd.
1 to 6/F, Bldg. T6 Smart City, Jihua 1st Rd, Chancheng District, Foshan City,
Guangdong, China. (PC: 528000)
www.kitoceramics.com





Modern Series 现代仿古·系列

2600x800 mm / 1800x900 mm / 1500x750 mm
1200x600 mm / 900x900 mm / 800x800 mm
600x600 mm

质感怦然心动，生活大道至简

KITO 现代仿古系列，是金意陶的拿手好戏。以混搭手法融入水泥、布料、岩石、金属等不同的时尚元素进行设计，小到 600x600，大到 2600x800，无论大空间小空间都能满足。国内现代仿古砖的领航者，我就是风向标。

One of KITO best selling series, mix and match cement, fabric, sandstone and metal elements, sizes from 600x600 to 2600x800, This series is widely used for both indoor and outdoor.

35° 柔光 HONED

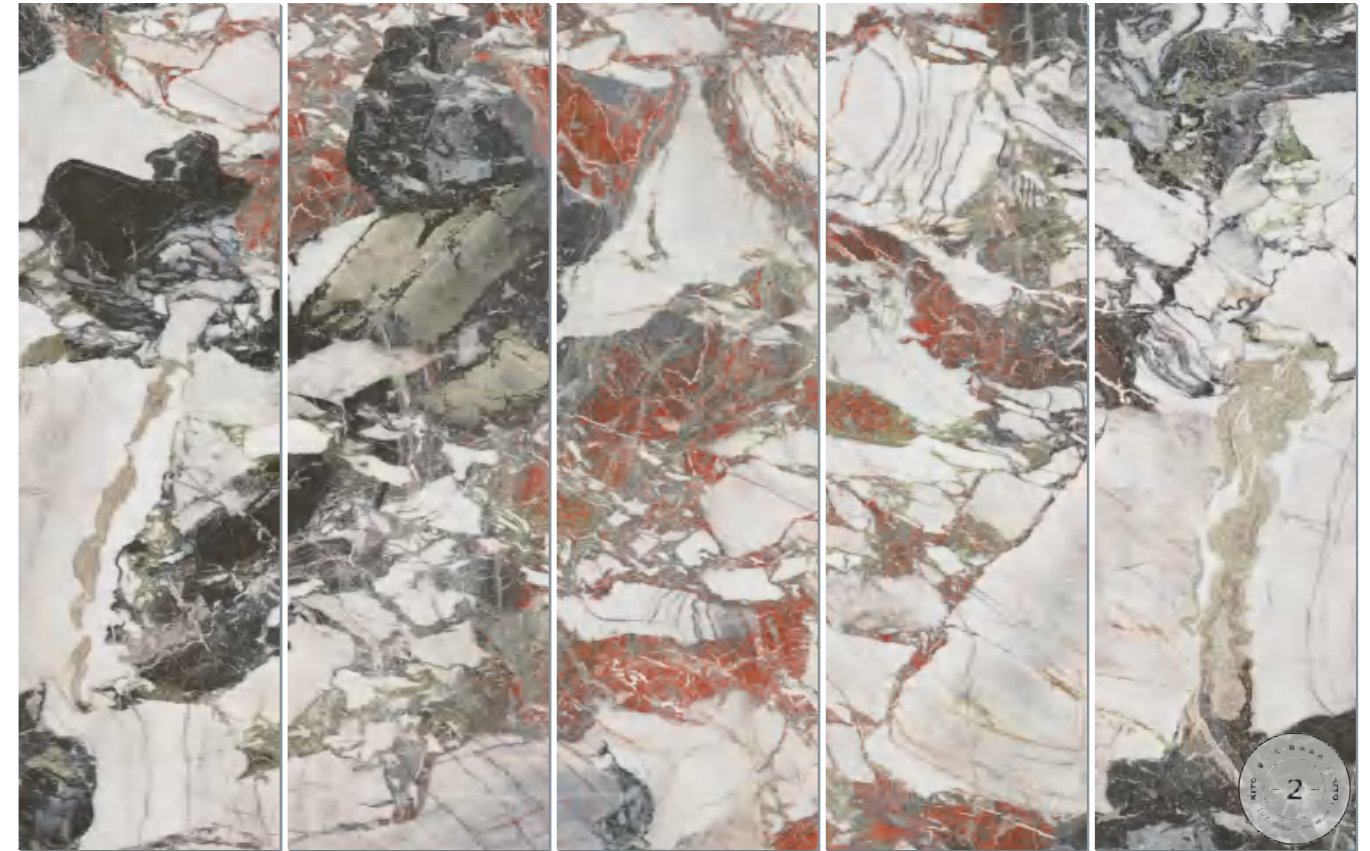
2 花色 DESIGN

金意陶独有的全干粒柔抛技术，打造出35°柔光质面，光感柔和不刺眼，触感细腻舒适，有如婴儿肌肤，更显空间清雅高级。



锦绣画屏

Primavera



编码 No.	K02688337BAM-1/5
规格 Size	2600x800 mm
颜色 Colour	彩色 / Colours

质面 Surface	35°柔光面 / 35° Honed
厚度 Thickness	9 mm
打印面 Face	5面设计

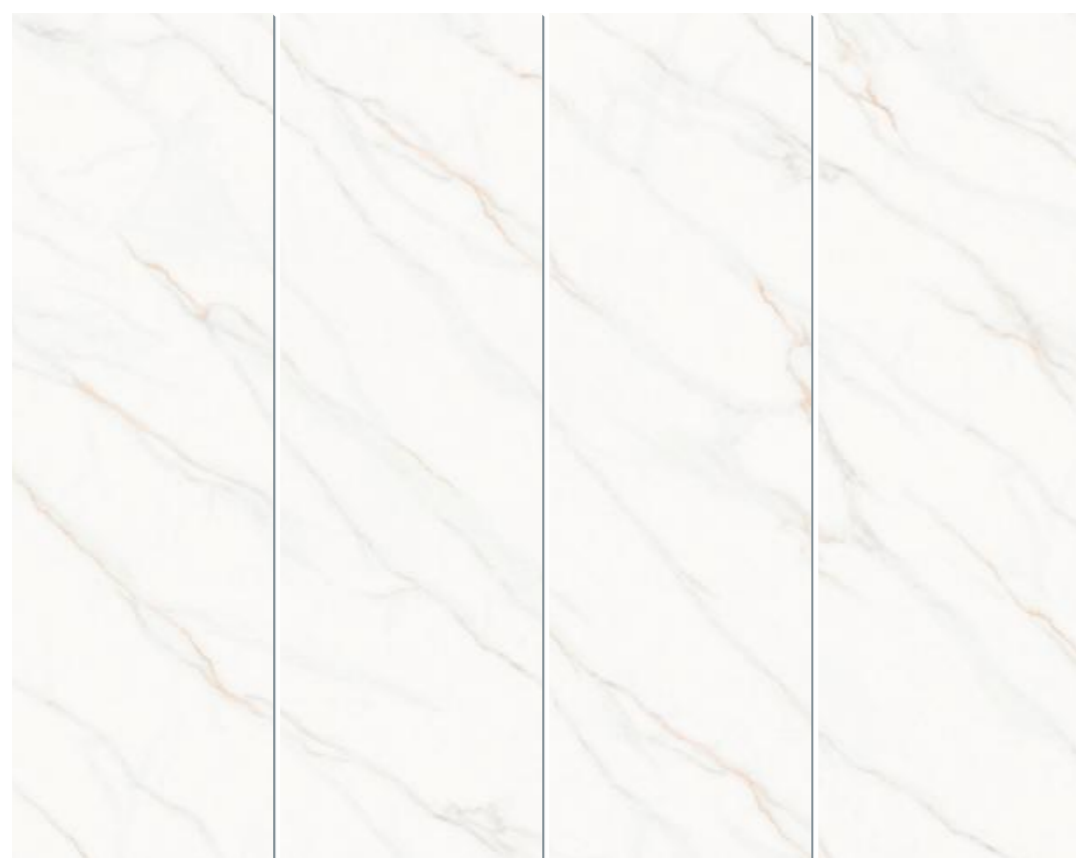




岩板 | KITO Slab | 2600x800 mm

金玉满堂

Calacatta Fantasy



编码 No. K02688336BAM

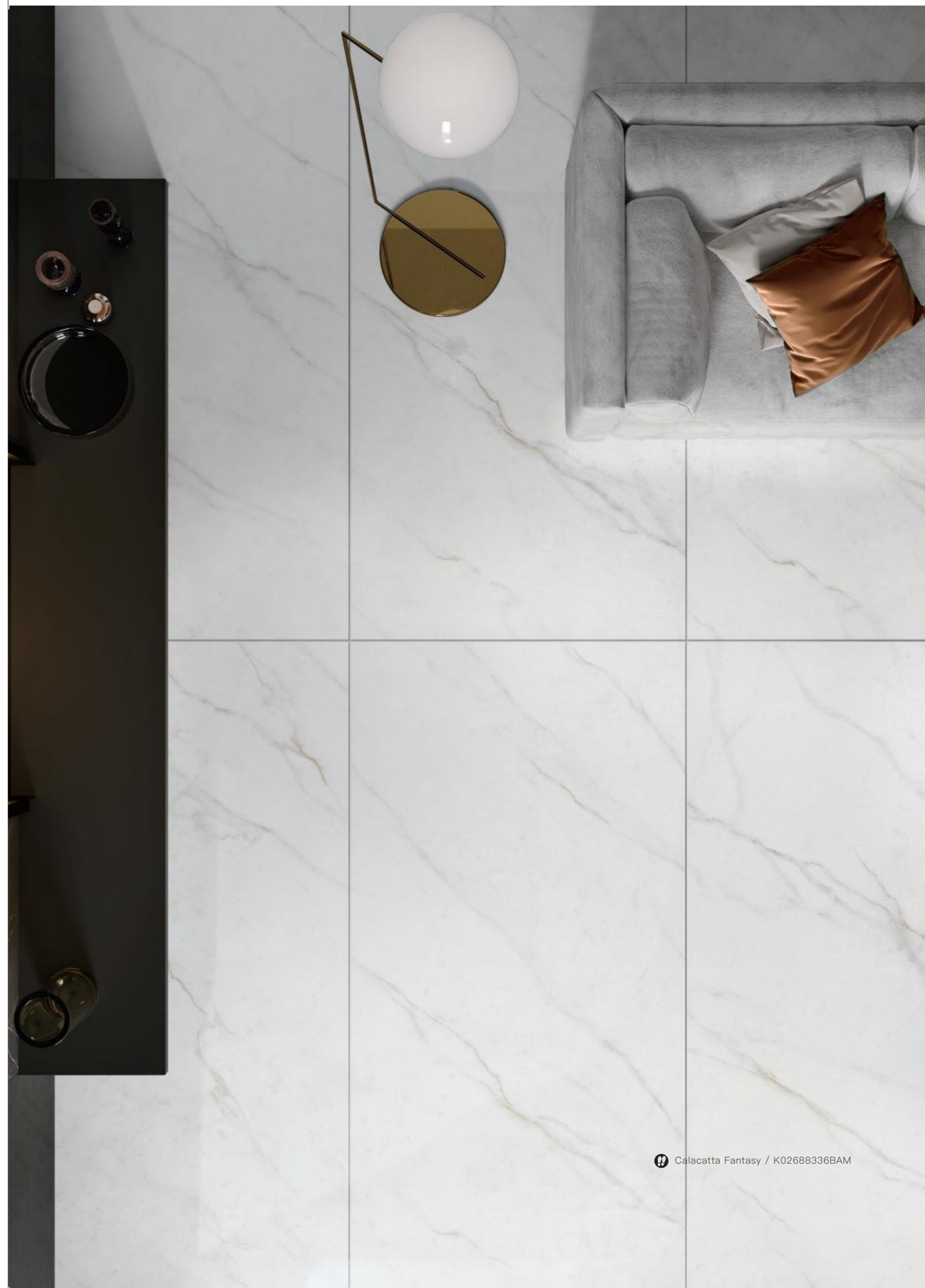
规格 Size 2600x800 mm

颜色 Colour 白色 / White

质面 Surface 35°柔光面 / 35° Honed

厚度 Thickness $\frac{9}{16}$ 9 mm

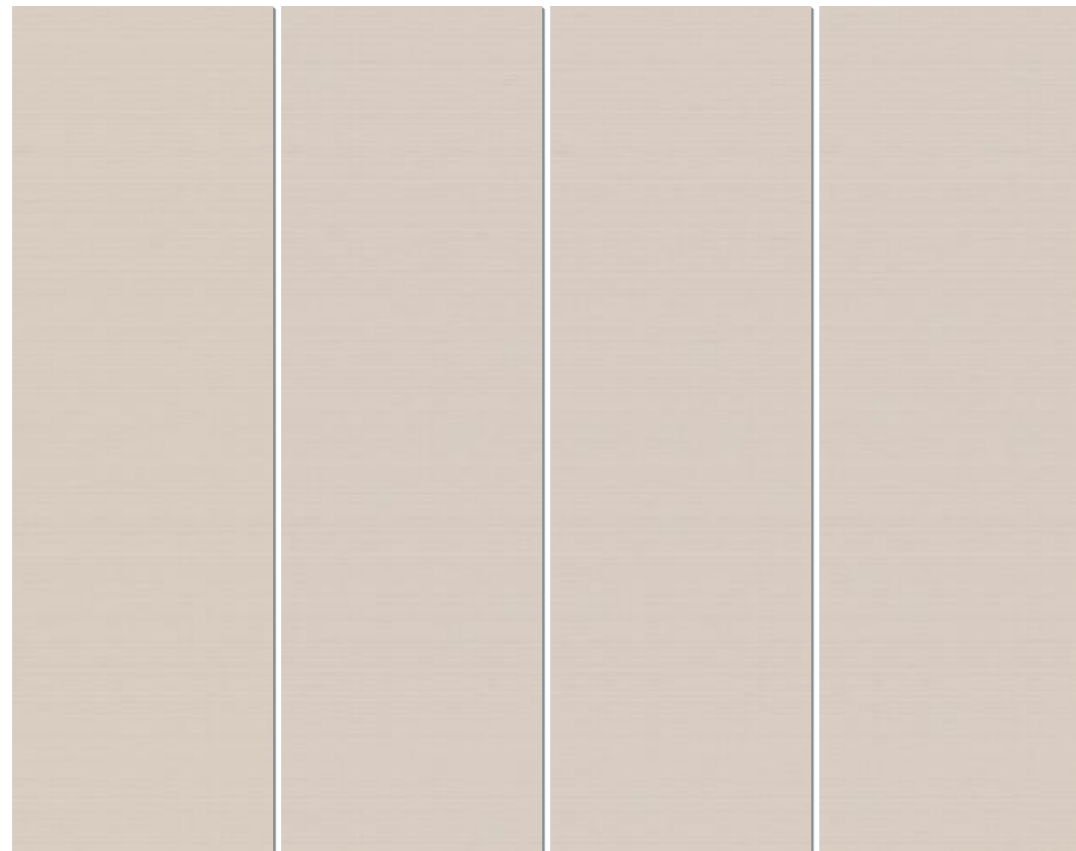
打印面 Face 4面设计



Calacatta Fantasy / K02688336BAM

雅

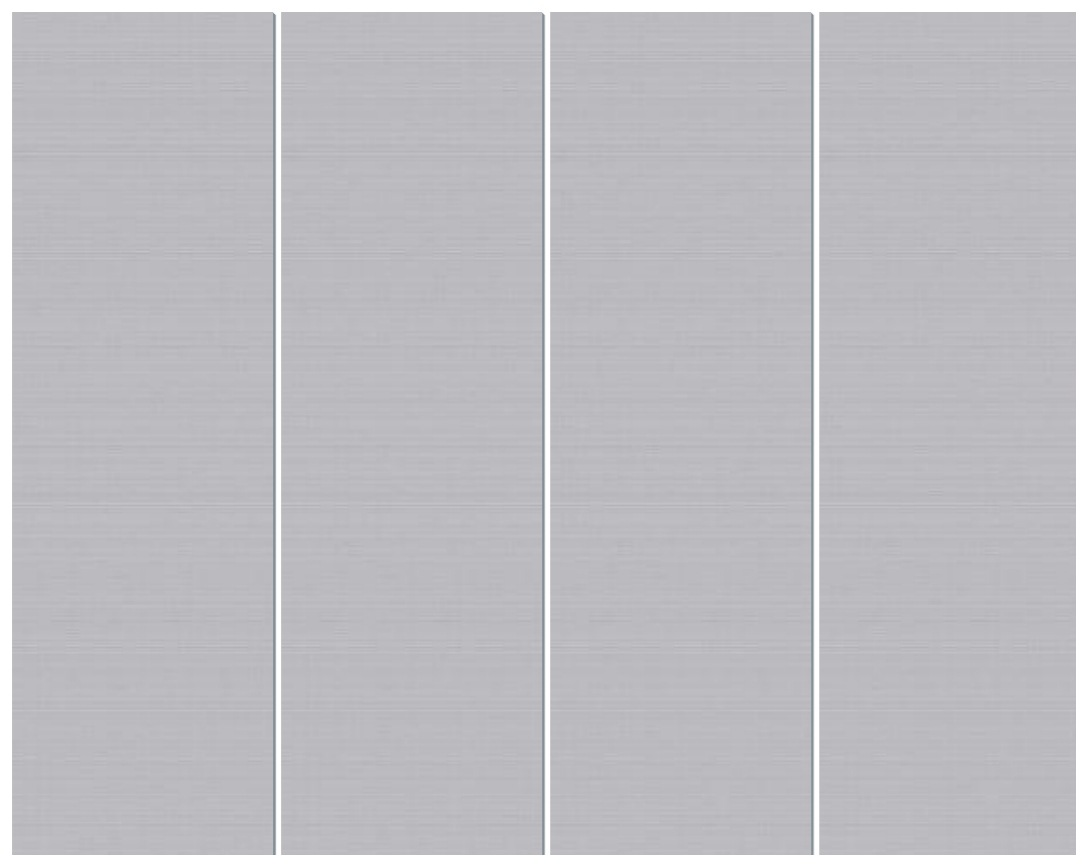
光面
MATTE



绮罗画幕

Canary

编码 No.	K02688338BAN
规格 Size	2600×800 mm
颜色 Colour	黄色 / Yellow
质面 Surface	雅光面 / Matte
厚度 Thickness	9 mm
打印面 Face	4 面设计



编码 No.	K02688339BAN
规格 Size	2600×800 mm
颜色 Colour	兰灰 / Blue-gray
质面 Surface	雅光面 / Matte
厚度 Thickness	9 mm
打印面 Face	4 面设计



Canary / K02688338BAN

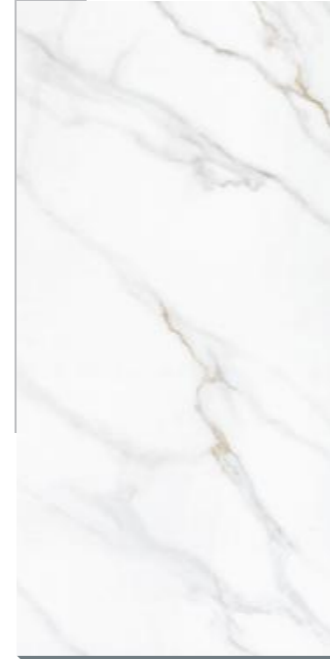
糖果面 SUGAR

5 花色 DESIGN

金意陶行业领先的糖果釉技术，融合西班牙进口 1.66μm 糖果干粒，层层打磨出甜蜜的糖果釉质面，晶闪优雅，防滑耐磨性能优越。



金玉满堂
Calacatta Fantasy



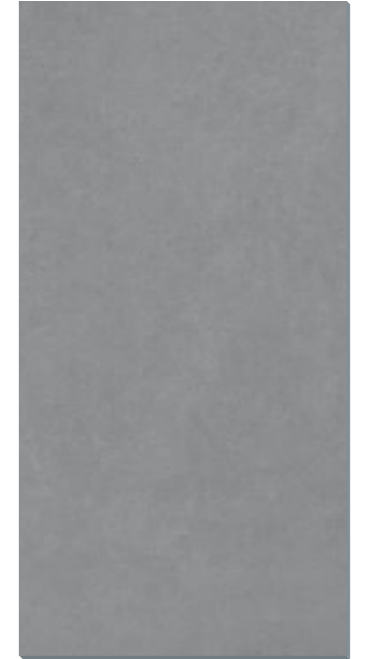
K01898320BAR 4 面设计
5 代糖果釉 / Sugar 5.0 9 mm

流砂白
Crystal White



K01898319BAR 4 面设计
5 代糖果釉 / Sugar 5.0 9 mm

古驰灰
Grigio Versilia



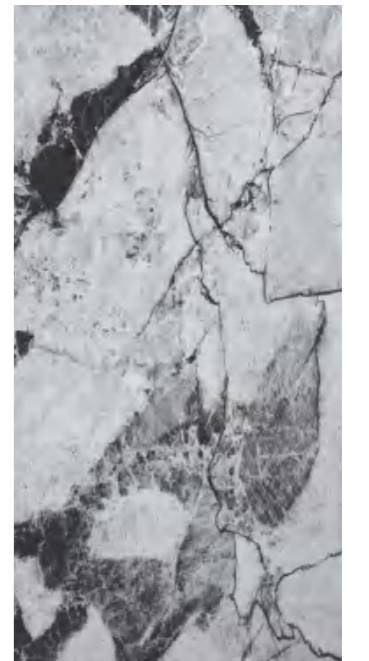
K01898321BAR 4 面设计
5 代糖果釉 / Sugar 5.0 9 mm

风华绝代
White Beauty

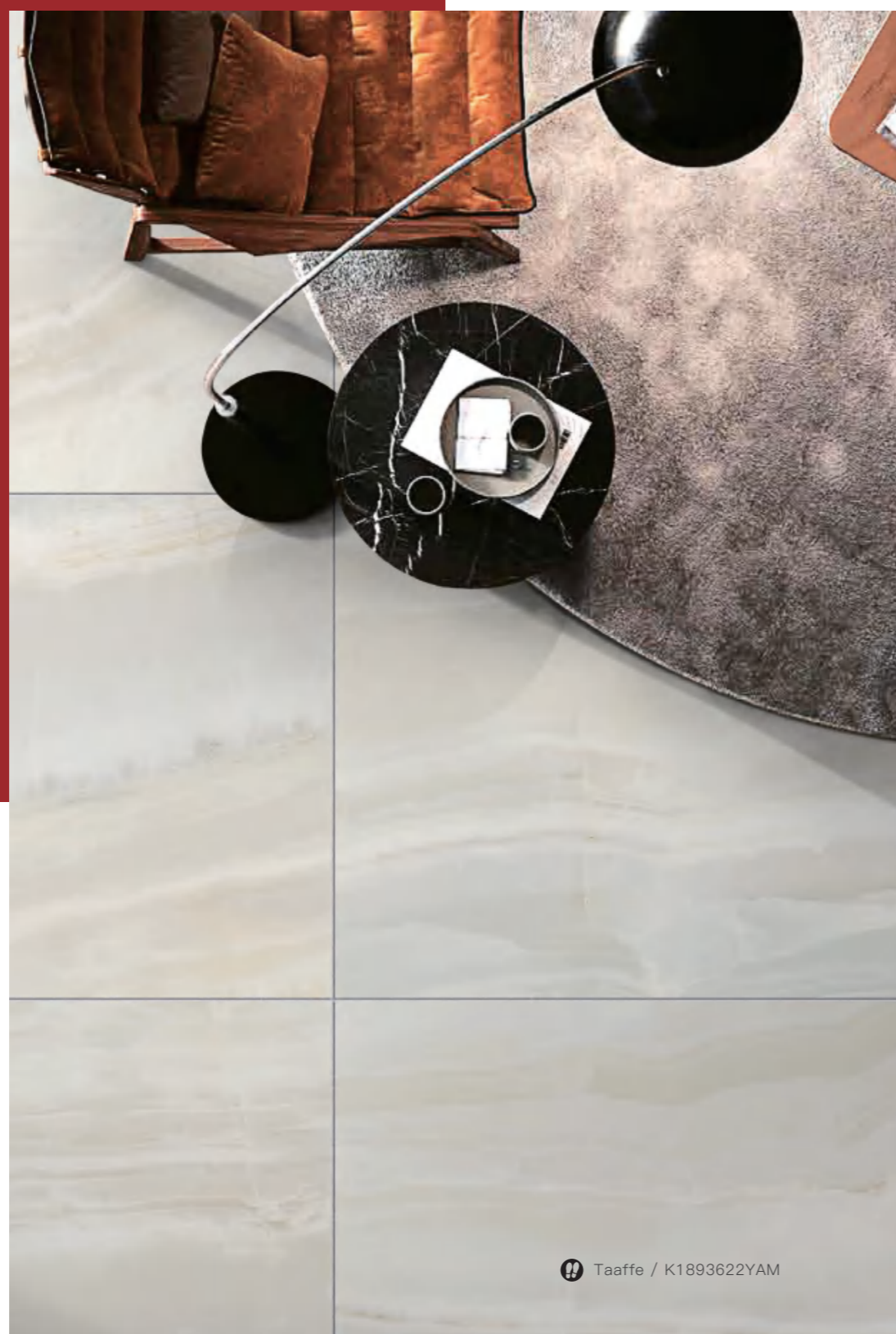
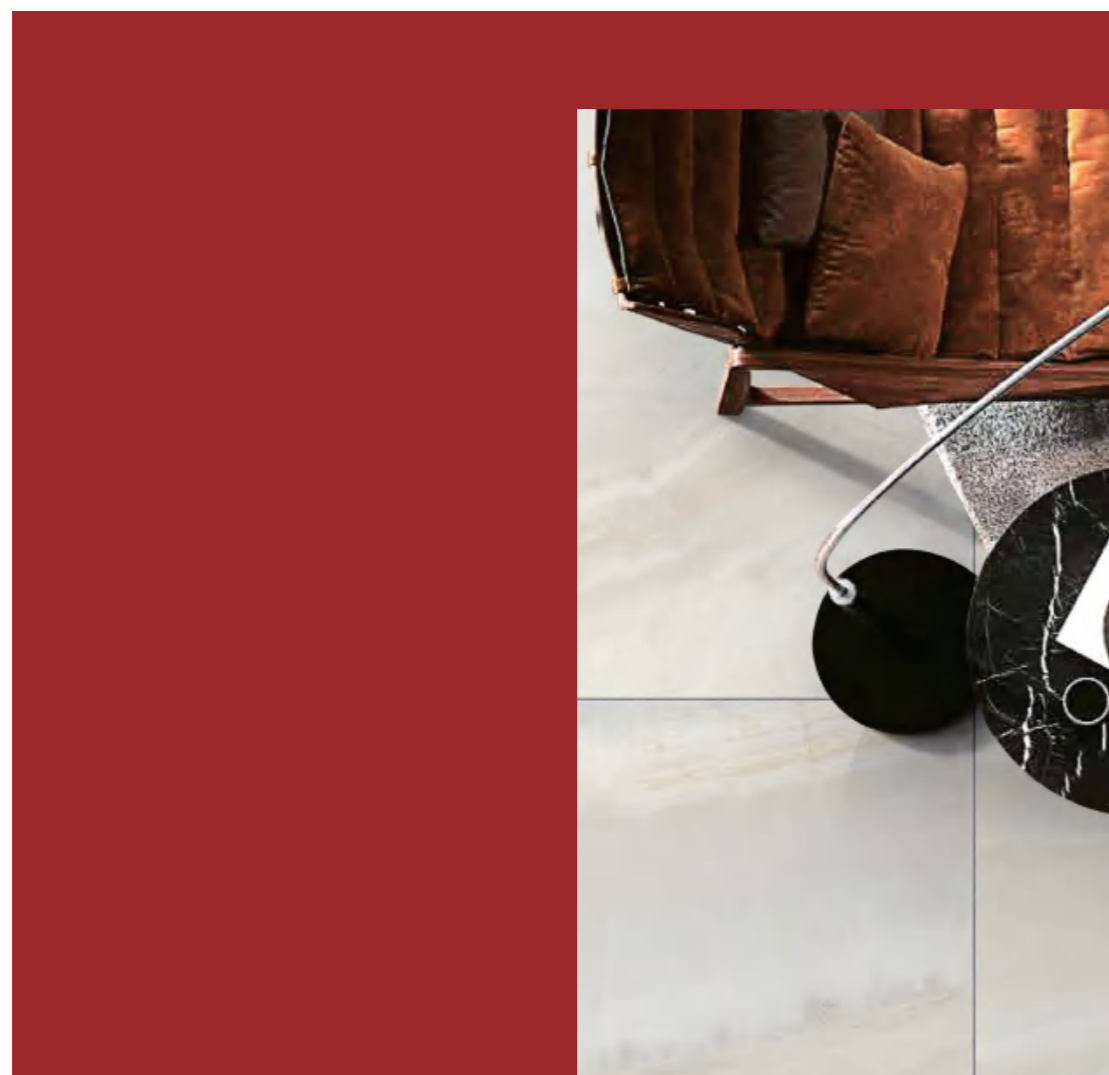


K01898322BAR 4 面设计
5 代糖果釉 / Sugar 5.0 9 mm

墨石天奇
Pithon Gray Nuevo



K01898323BAR 4 面设计
5 代糖果釉 / Sugar 5.0 9 mm



189

1800x900 mm 规格产品



黑曼巴 / Black Mamba

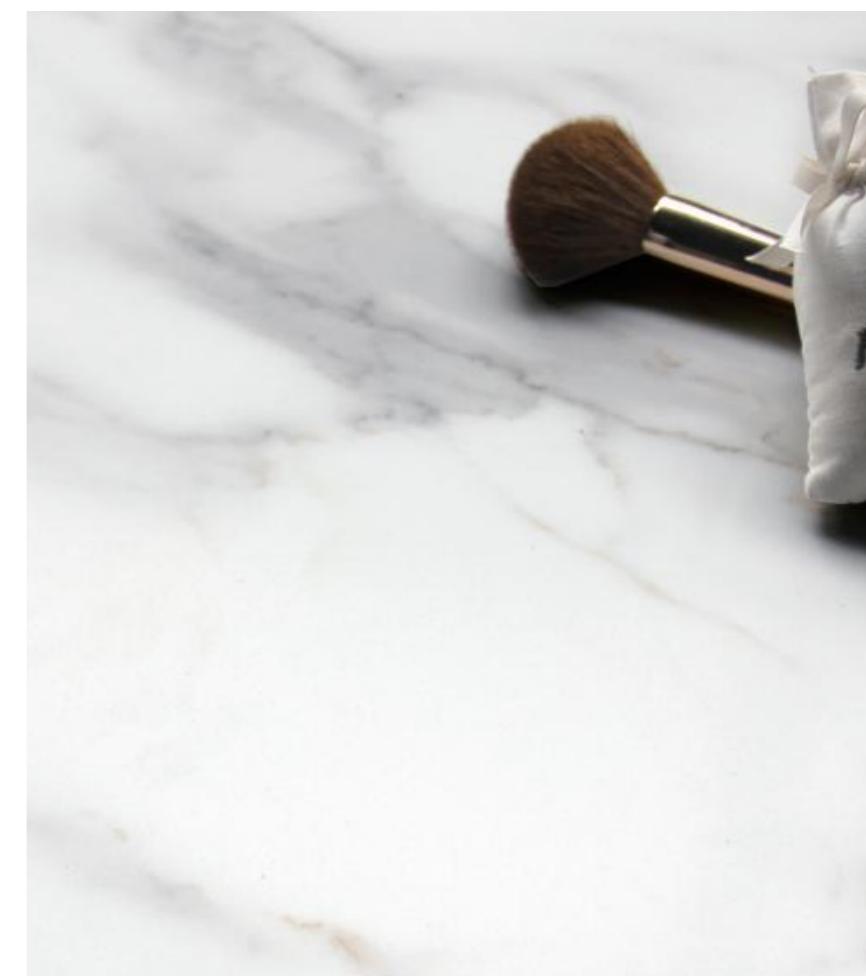
塔菲玉 / Taaffe

鱼肚白 / Calacatte White

云罗纱 / Crystal

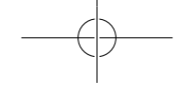
斯特拉 / Stella

Taaffe / K1893622YAM



Calacatte White

K1893273YAM / 1800x900 mm



3 花色 DESIGN

黑曼巴
Black Mamba



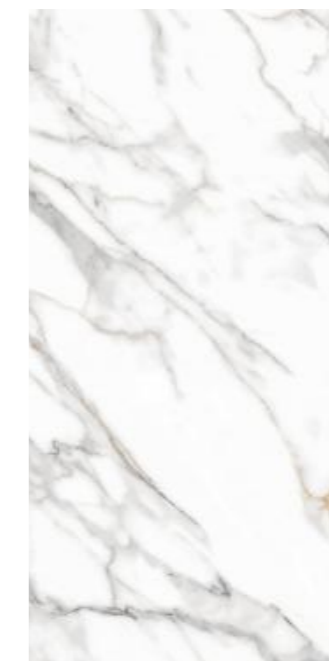
K1893623YAM 6 面设计
35° 磨光面 / 35° Honed 11 mm

塔菲玉
Taaffe



K1893622YAM 12 面设计
35° 磨光面 / 35° Honed 11 mm

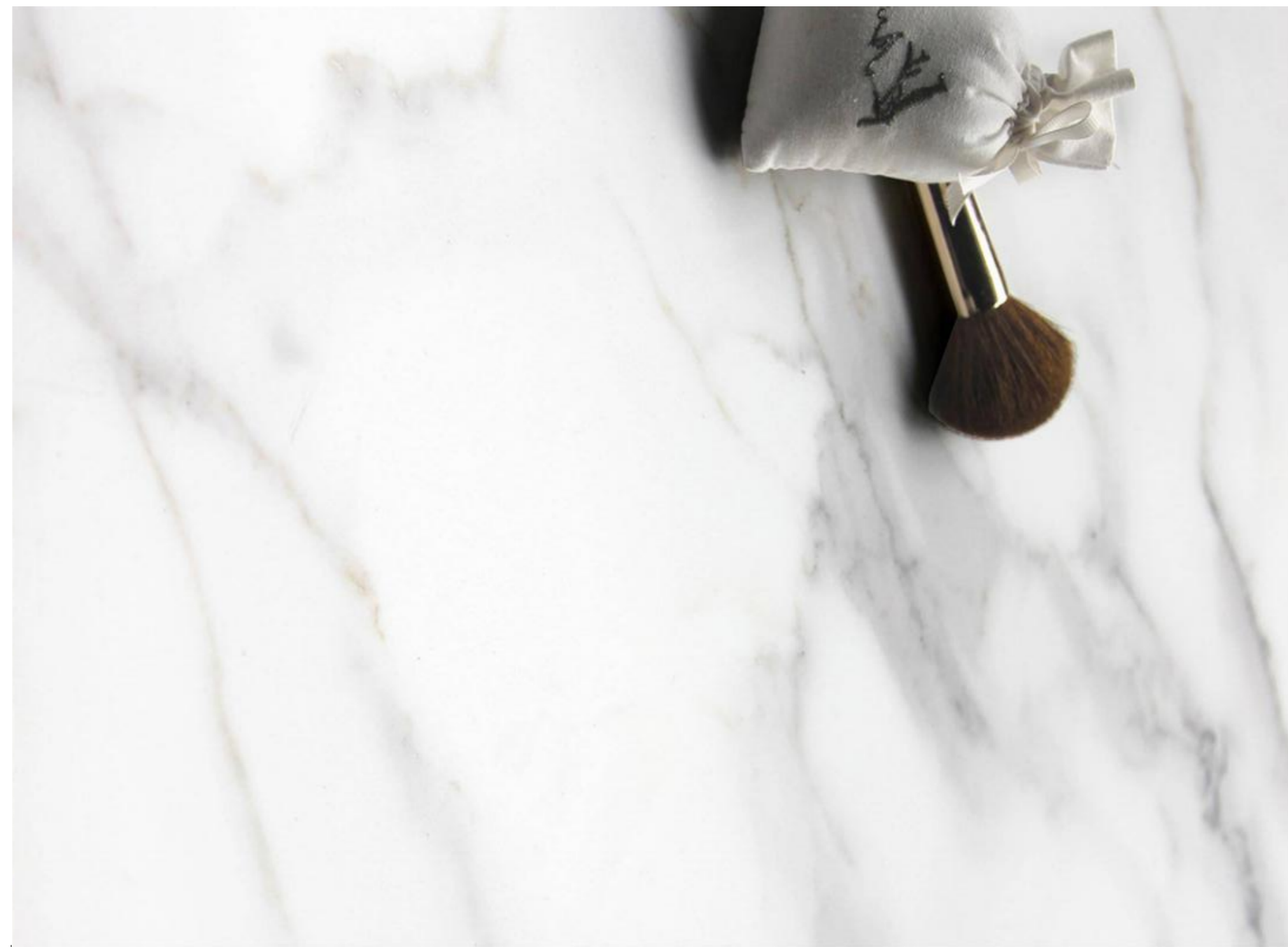
鱼肚白
Calacatte White



K1893273YAM 5 面设计
35° 磨光面 / 35° Honed 11 mm



K0903273YAM 9 面设计
35° 磨光面 / 35° Honed 11 mm



云罗纱 | 降醛健康砖
Crystal

古玩面
LAPPATO



K01898071TAR 6面设计
古玩面 / Lappato 11 mm



K01898072TAR 6面设计
古玩面 / Lappato 11 mm

斯特拉
Stella

雅光面
MATTE



K1893565TA 6面设计
雅光面 / Matte 11 mm



Crystal / K01898071TAR

Crystal / K01898072TAR

157

1500x750 mm 规格产品

云端灰 / Softly

天净沙 / Mildly

波西塔诺 / Positano

贵族水泥 / Noble Cement



Mildly / K01578079TAR

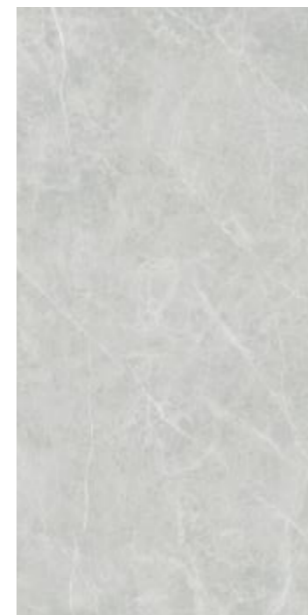


Mildly / K01578079TAR



Softly / K01578077TAR

云端灰 | 降醛健康砖
Softly



K01578076TAR 4面设计
古玩面 / Lappato 11 mm



K01578077TAR 4面设计
古玩面 / Lappato 11 mm

天净沙 | 降醛健康砖
Mildly



K01578078TAR 5面设计
古玩面 / Lappato 11 mm

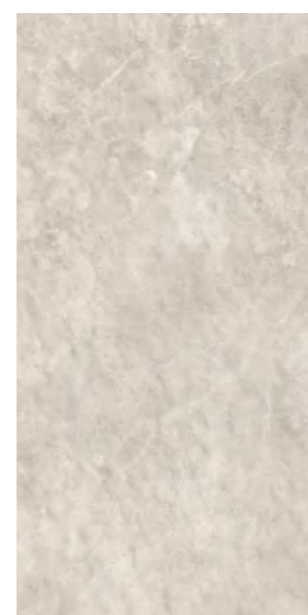


K01578079TAR 4面设计
古玩面 / Lappato 11 mm

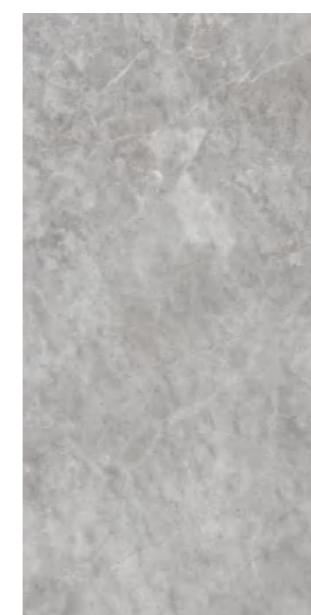


Noble Cement / K1573826DAM

波西塔诺
Positano



K1573817YAM 6面设计
古玩面 / Honed 11 mm



K1573818YAM 6面设计
古玩面 / Honed 11 mm

贵族水泥
Noble Cement



K1573826DAM 6面设计
古玩面 / Honed 11 mm

贵族水泥 - 配件
Noble Cement · Decor



K1573826DHM 4面设计
10°磨光面 / 10° Honed 11 mm



126

1200x600 mm 规格产品



- 爱丽丝 / Ales
- 御砂岩 / Sandstone
- 特拉尼 / Trani
- 卡萨龙 / Cassero
- 倚风石 / Welsh
- 伍尔美白 / Woolf
- 派克灰 / Parker Gray
- 雕琢印象 / 3D Sperone Stone



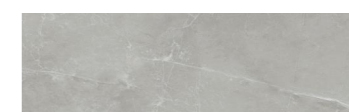
钻闪面
Glossy



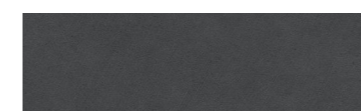
雅光面
Matte



古玩面
Lappato



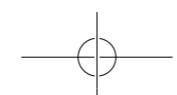
55° 柔光面
55° Honed



干粒雅光面
Matte



荔枝面
Nature



爱丽丝

Ales, available in 20mm



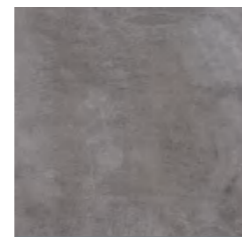
K1263516TAP 6面设计
Matte /lappato 10 mm



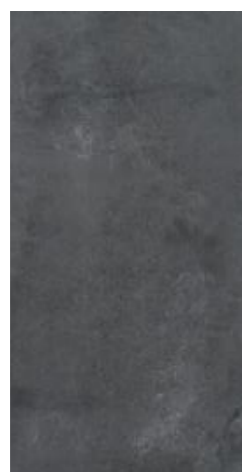
K0603516TAP 12面设计
Matte /lappato 10 mm



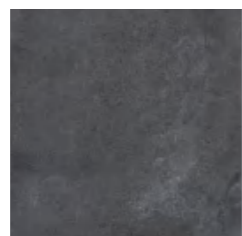
K1263517TAP 6面设计
Matte /lappato 10 mm



K0603517TAP 12面设计
Matte /lappato 10 mm



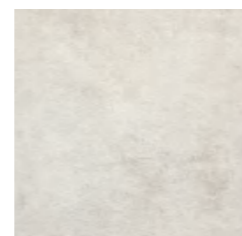
K1263518TAP 6面设计
Matte /lappato 10 mm



K0603518TAP 12面设计
Matte /lappato 10 mm



K1263525TAP 6面设计
Matte /lappato 10 mm



K0603525TAP 12面设计
Matte /lappato 10 mm

御砂岩

Sandstone



K1263555TAP 18面设计
荔枝钻闪面 Lappato 10 mm



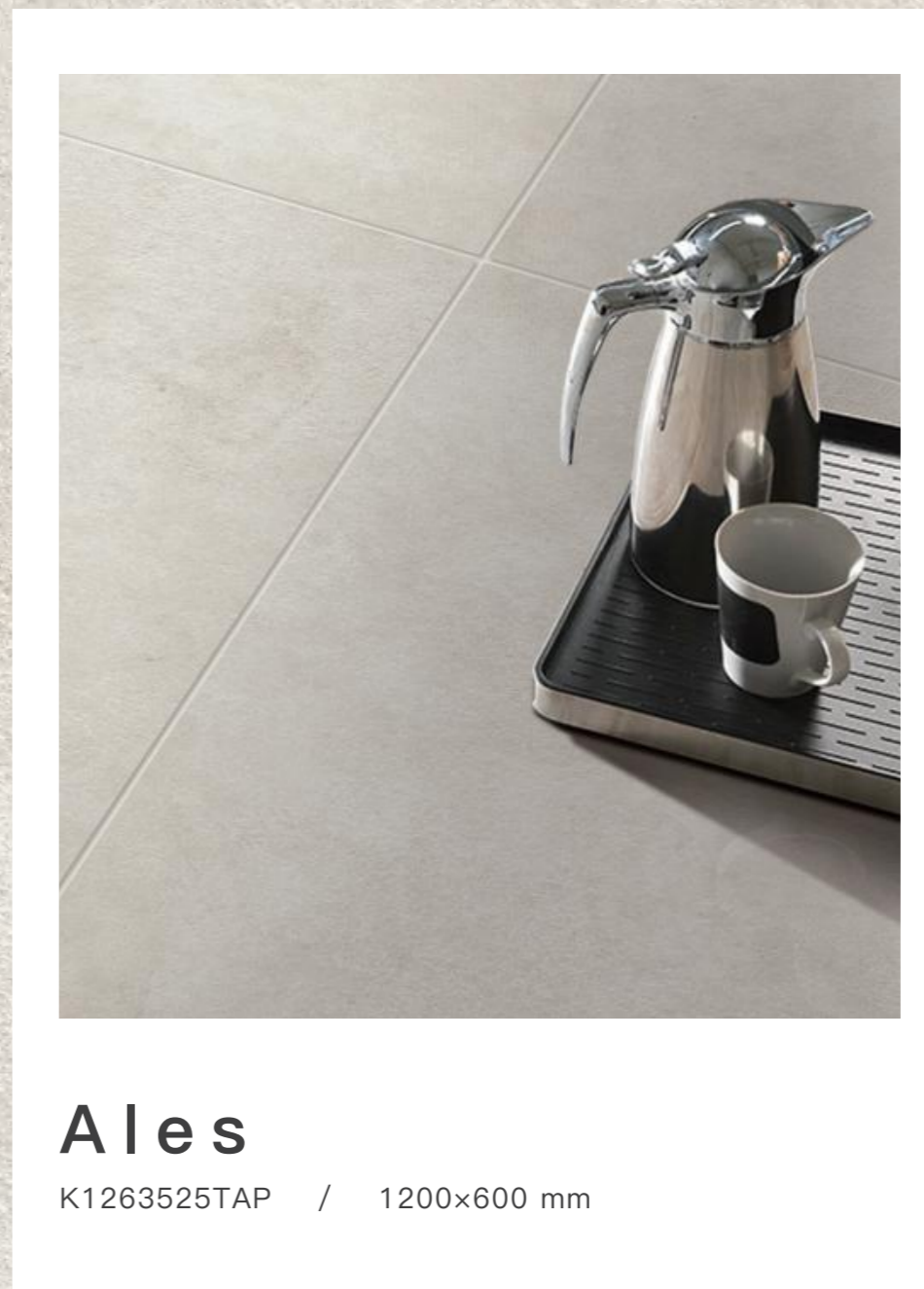
K1223545TA 54面设计
荔枝面 Nature 10 mm



K1263558TAP 18面设计
荔枝钻闪面 Lappato 10 mm



K1223548TA 54面设计
荔枝面 Nature 10 mm



Ales

K1263525TAP / 1200×600 mm

雅 光面 MATTE 10 花色 DESIGN

特拉尼 Trani



K01268036TAP 6 面设计
雅光面 / Matte 10 mm



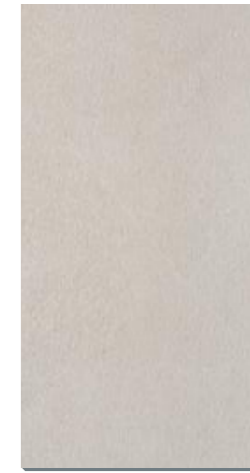
K01268037TAP 6 面设计
雅光面 / Matte 10 mm



K01268038TAP 6 面设计
雅光面 / Matte 10 mm



K01268039TAP 6 面设计
雅光面 / Matte 10 mm



K01268040TAP 6 面设计
雅光面 / Matte 10 mm

卡萨龙 Cassero, available in 20mm



K1263520TA 6 面设计
雅光面 / Matte 10 mm



K1263522TA 6 面设计
雅光面 / Matte 10 mm



K1263523TA 6 面设计
雅光面 / Matte 10 mm

倚风石 Welsh



K01268241TAN 8 面设计
雅光面 / Matte 10 mm



K01268242TAN 8 面设计
雅光面 / Matte 10 mm



4 花色 DESIGN

伍尔美白 Woolf



K1264334YAM 6面设计
古玩面 / Honed 10 mm

K1264335YA 7面设计
雅光面 / Matte 10 mm

K1264336YA 7面设计
雅光面 / Matte 10 mm

K1264337YA 7面设计
雅光面 / Matte 10 mm



55° 柔光面 HONED

派克灰 Parker Gray



K1263676YAM 4面设计
55°柔光面 / 55° Honed 10 mm





干粒

雅光面
MATTE

It has been named to enhance its beauty and ceramic personality, understood as a creative spark in the KITO's universe. Those looking for the charm of stone find it in the new 3D SPERONE Collection, a surface finish that boasts all the beauty of stone, multiple graphics with well-balanced 3D effects, the different graphic design give the product the essence of natural stone. It is suitable for any type of contemporary, trendy, fashion and styling furnishings and at the same time gives great elegance for any classic solutions.

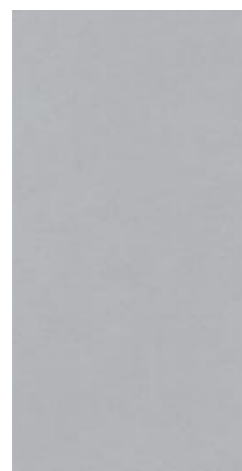




现代仿古 | Modern Series | 1200×600 mm

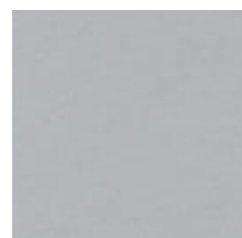
雕琢印象

3D Sperone Stone



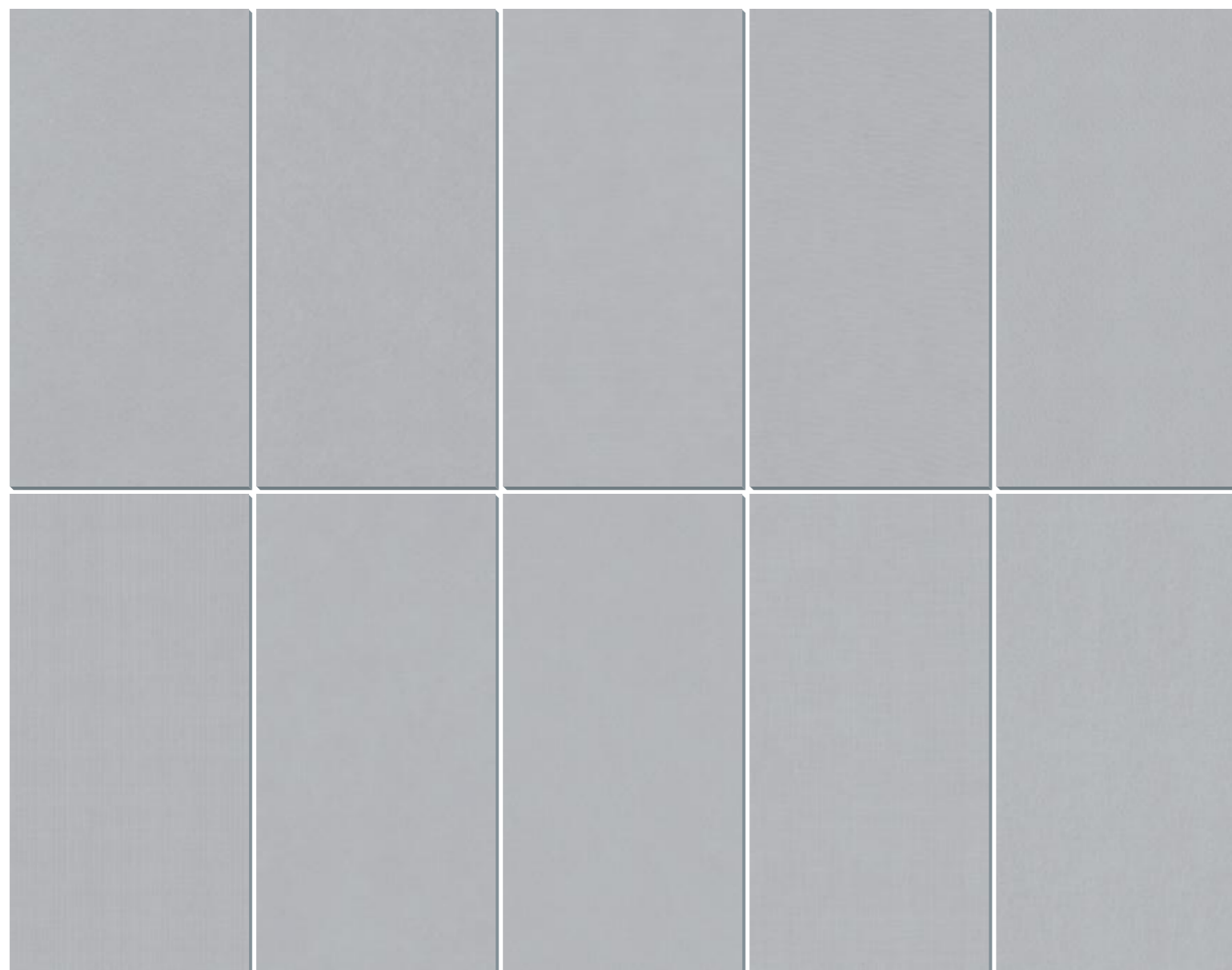
K01268347TAR 10 面设计

干粒雅光面 / Matte 10 mm



K00608347TAR 20 面设计

干粒雅光面 / Matte 10 mm



3D Sperone Stone

K01268347TAR / 1200×600 mm



3D Sperone Stone / K01268347TAR



雕琢印象

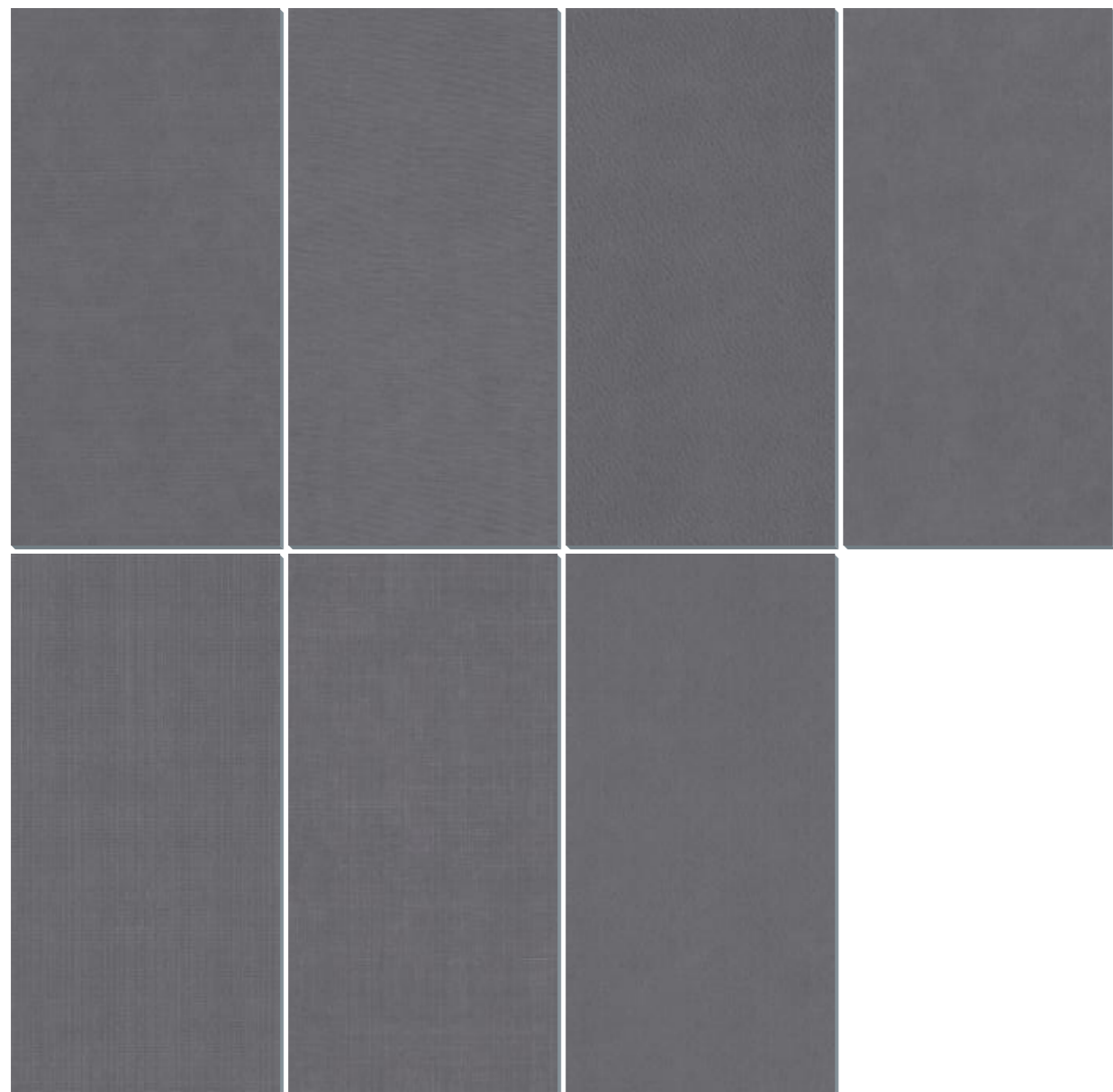
3D Sperone Stone



K01268348TAR 7面设计
干粒雅光面 / Matte 10 mm



K00608348TAR 14面设计
干粒雅光面 / Matte 10 mm



3D Sperone Stone

K01268348TAR / 1200×600 mm



3D Sperone Stone / K01268348TAR

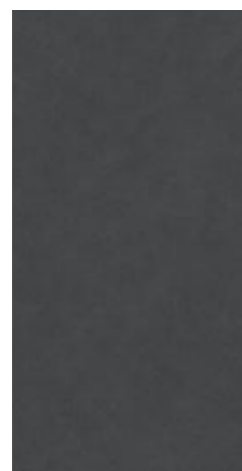




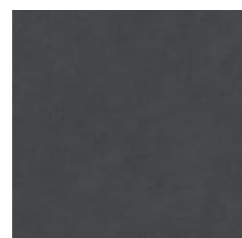
现代仿古 | Modern Series | 1200x600 mm

雕琢印象

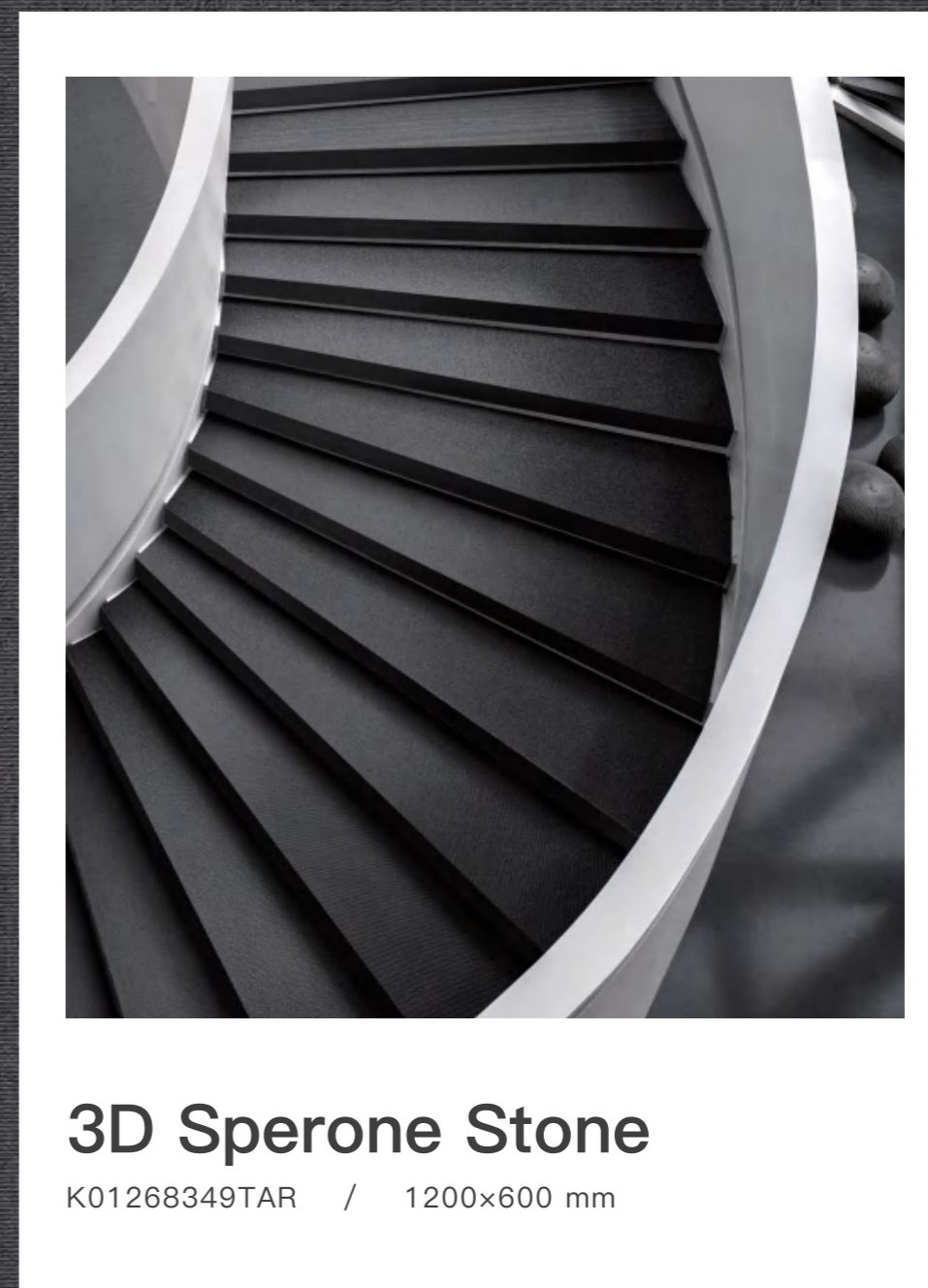
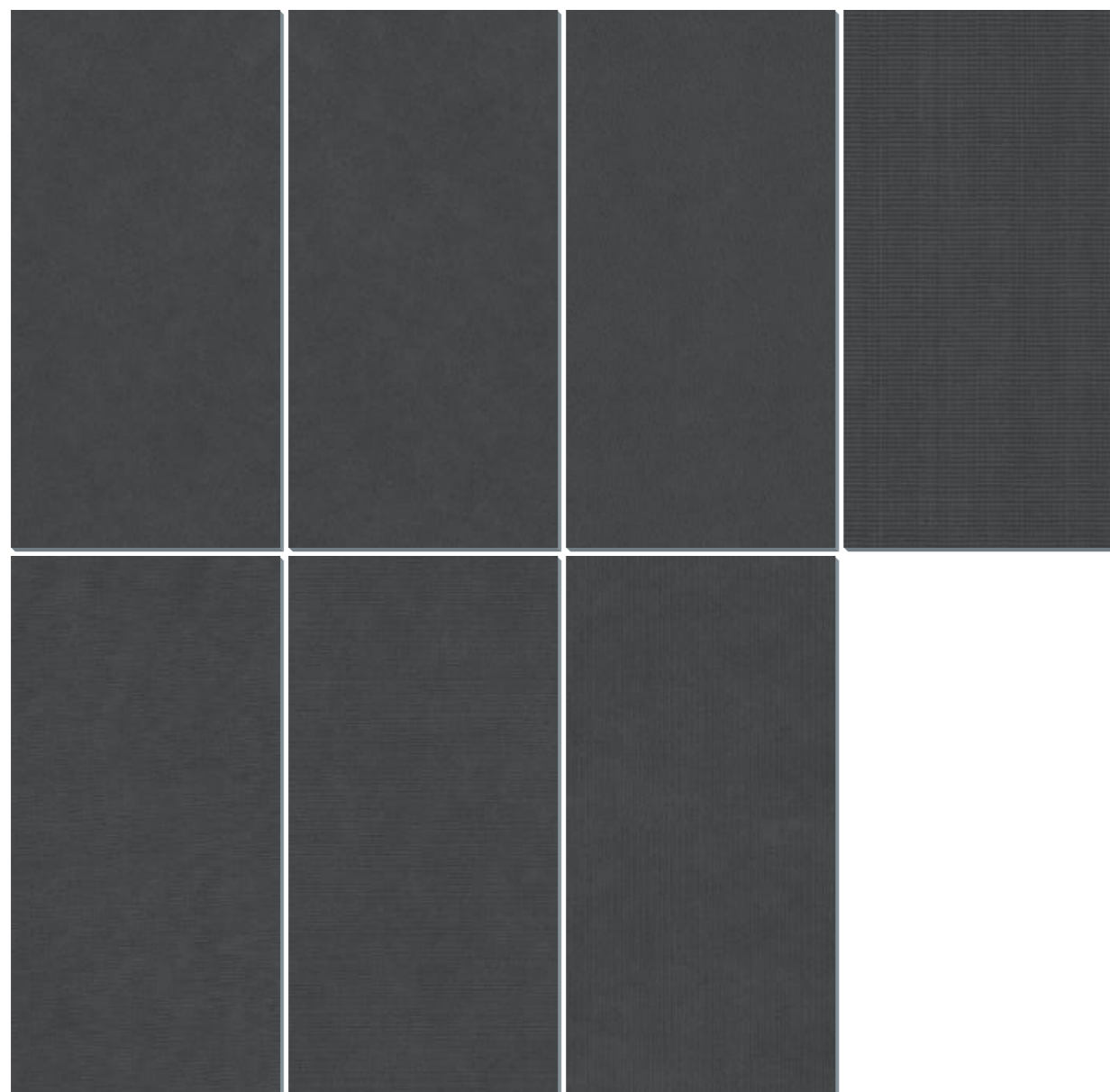
3D Sperone Stone



K01268349TAR 7面设计
干粒雅光面 / Matte 10 mm



K00608349TAR 14面设计
干粒雅光面 / Matte 10 mm



3D Sperone Stone

K01268349TAR / 1200x600 mm



3D Sperone Stone / K01268349TAR

雕琢印象·配件

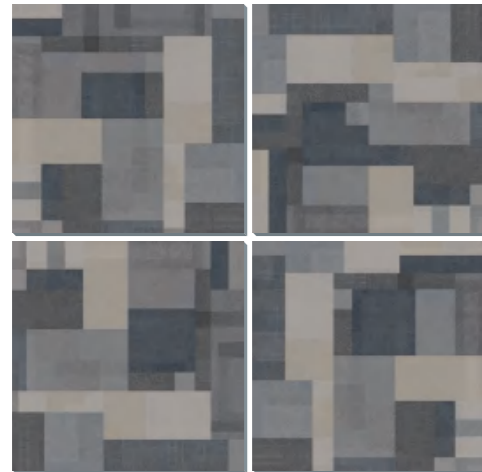
3D Sperone Stone·Decor



K01268346HBR 2面设计
干粒雅光面 / Matte $\frac{1}{2}$ 10 mm



K01268347HBR 3面设计
干粒雅光面 / Matte $\frac{1}{2}$ 10 mm



K00608346HBR 4面设计
干粒雅光面 / Matte $\frac{1}{2}$ 10 mm



K00608347HBR 6面设计
干粒雅光面 / Matte $\frac{1}{2}$ 10 mm



3D Sperone Stone·Decor / K01268347HBR

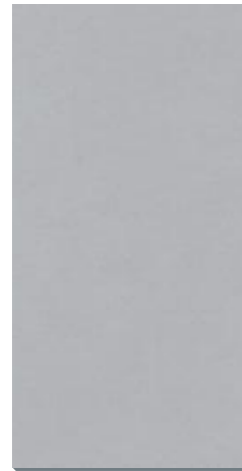


3D Sperone Stone·Decor / K01268347HBR

3D Sperone Stone / K00608347TAR

雕琢印象

3D Sperone Stone



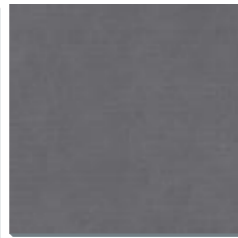
K01268347TAR 10 面设计
干粒雅光面 / Matte 10 mm



K00608347TAR 20 面设计
干粒雅光面 / Matte 10 mm



K01268348TAR 7 面设计
干粒雅光面 / Matte 10 mm



K00608348TAR 14 面设计
干粒雅光面 / Matte 10 mm



K01268349TAR 7 面设计
干粒雅光面 / Matte 10 mm



K00608349TAR 14 面设计
干粒雅光面 / Matte 10 mm

雕琢印象 - 配件

3D Sperone Stone·Decor



K01268346HBR 2 面设计
干粒雅光面 / Matte 10 mm



K00608346HBR 4 面设计
干粒雅光面 / Matte 10 mm



K01268347HBR 3 面设计
干粒雅光面 / Matte 10 mm

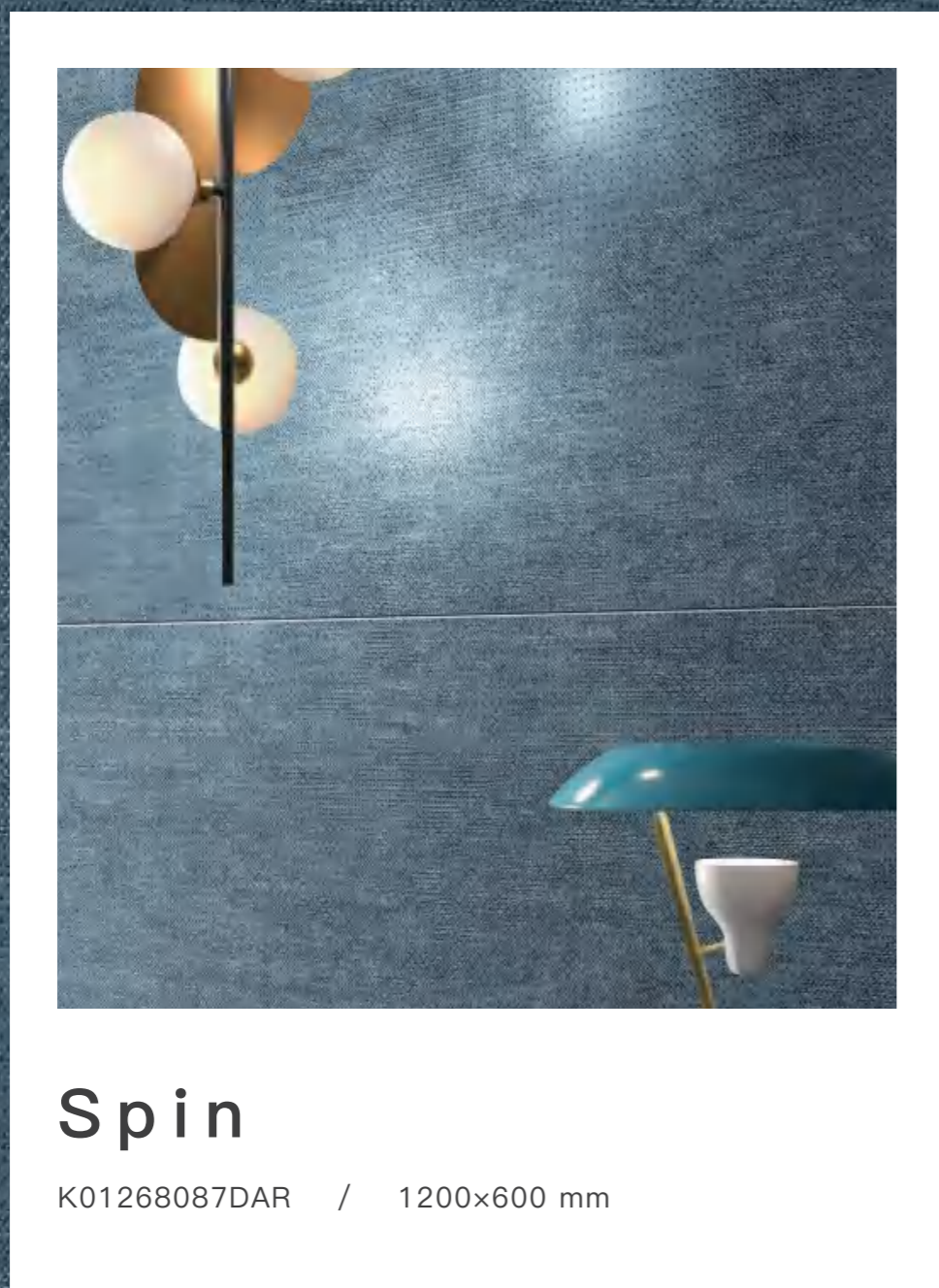


K00608347HBR 6 面设计
干粒雅光面 / Matte 10 mm



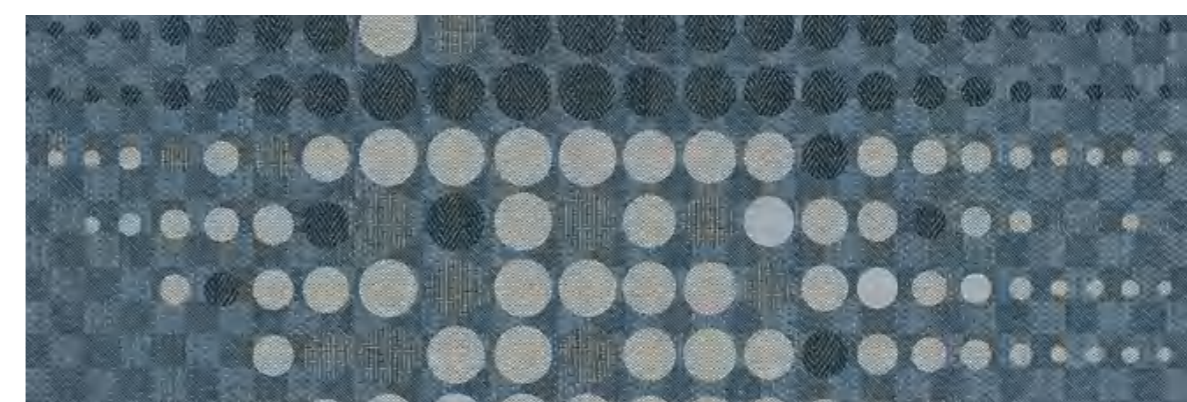
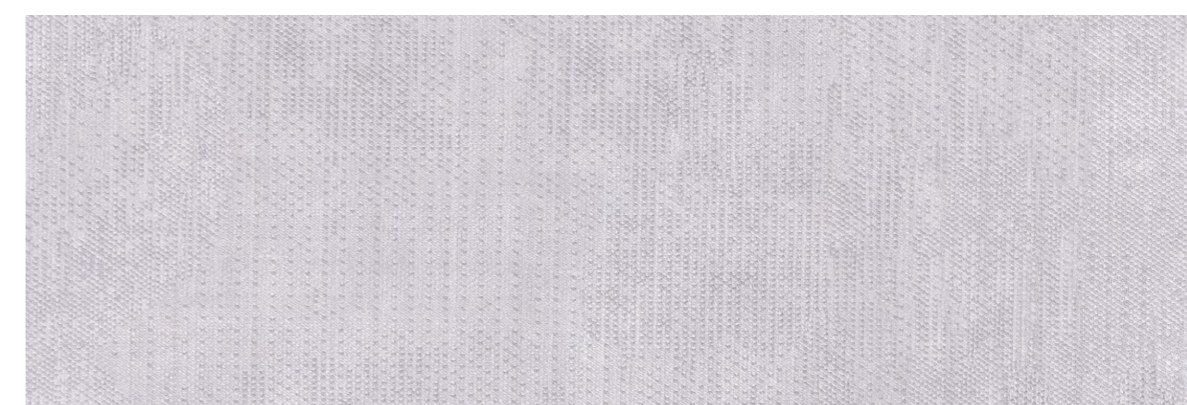
3D Sperone Stone·Decor / K01268346HBR

3D Sperone Stone / K01268349TAR



轻罗织 | 降醛健康砖

灵感源于高级波斯地毯，纵横交错的织纹细密精致，灰白与深蓝两种淡雅色彩，带来如布一般的温馨。



轻罗织 | 降醛健康砖

Spin



K01268086DAR 4面设计

5代糖果釉 / Sugar 5.0 11 mm



K01268087DAR 4面设计

5代糖果釉 / Sugar 5.0 11 mm



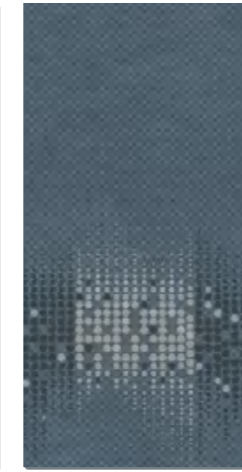
K01268087HBR 3面设计

5代糖果釉 / Sugar 5.0 11 mm



K01268087HBR 3面设计

5代糖果釉 / Sugar 5.0 11 mm



K01268087HBR 3面设计

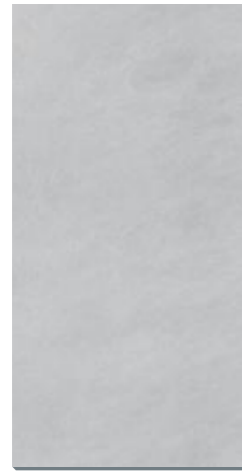
5代糖果釉 / Sugar 5.0 11 mm

轻罗织·配件

Spin·Decor

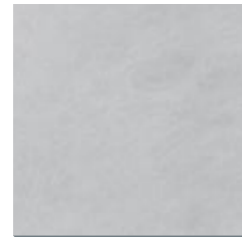
灵骏灰 | 降醛健康砖

Meteor



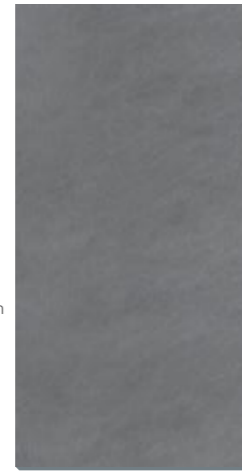
K01268082DAR 6面设计

5代糖果釉 / Sugar 5.0 11 mm



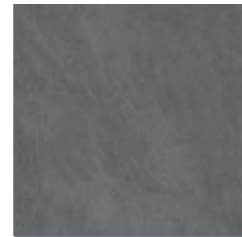
K00608082DAR 6面设计

5代糖果釉 / Sugar 5.0 11 mm



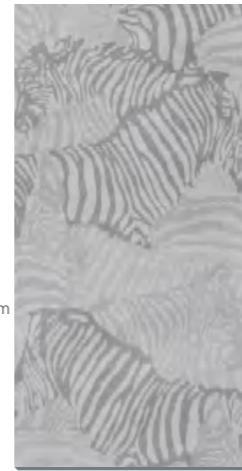
K01268083DAR 6面设计

5代糖果釉 / Sugar 5.0 11 mm



K00608083DAR 6面设计

5代糖果釉 / Sugar 5.0 11 mm

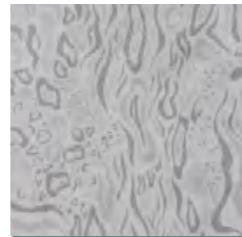


K01268082HBR 4面设计

5代糖果釉 / Sugar 5.0 11 mm

灵骏灰·配件

Meteor·Decor



K00608082HBR 8面设计

5代糖果釉 / Sugar 5.0 11 mm



Meteor·Decor / K01268082HBR

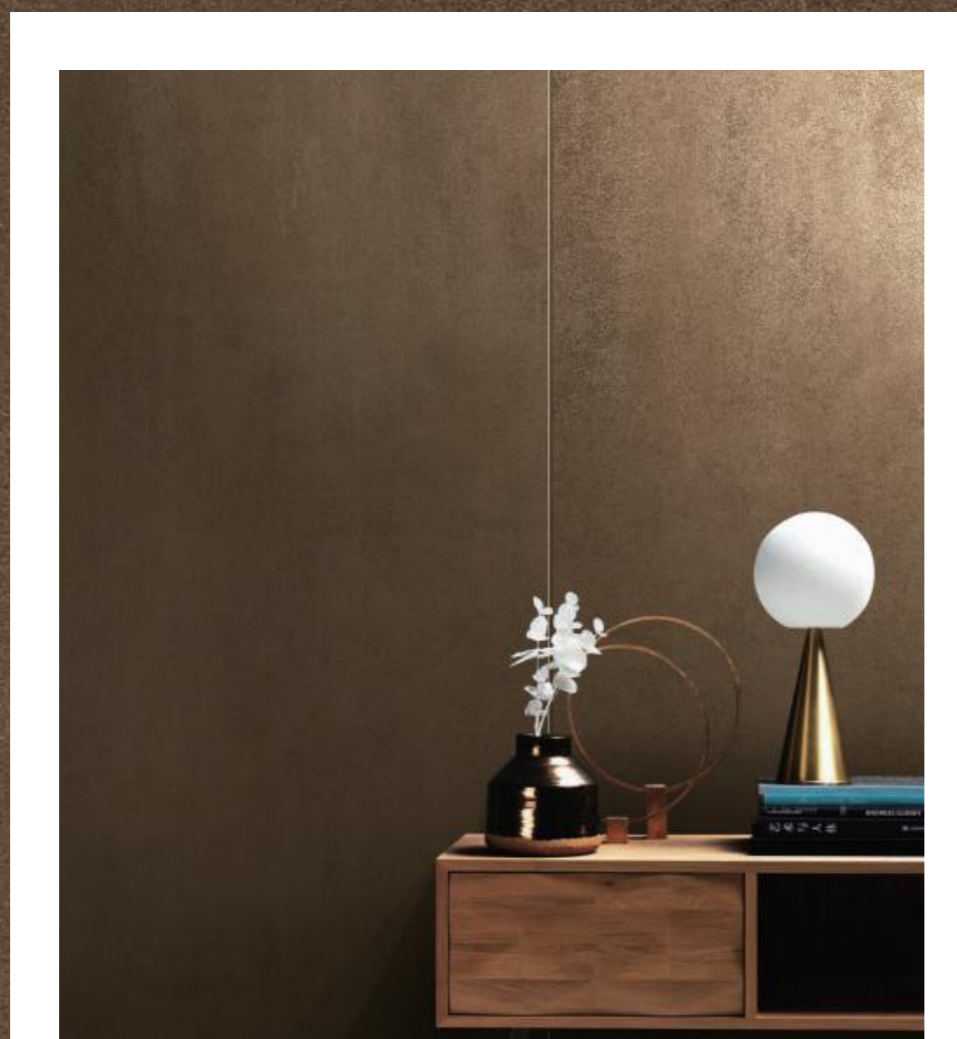
Meteor / K00608082DAR



岩板 | KITO Slab | 1800x900 mm

金属面 METAL

迈巴赫
Lamiera



Lamiera

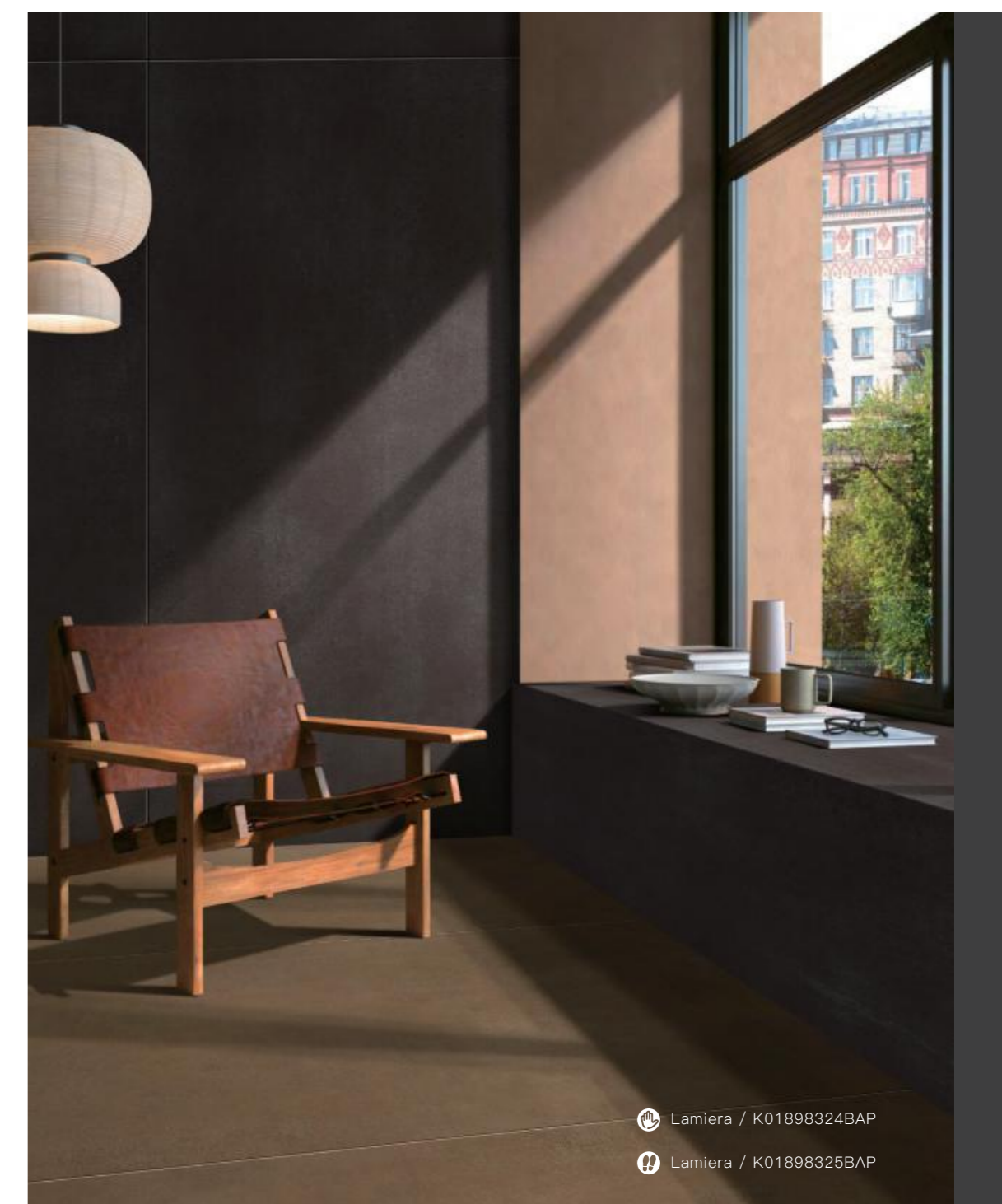
K01898325BAP / 1800x900 mm



K01898324BAP 3面设计
金属面 / Metal 9 mm



K01898325BAP 3面设计
金属面 / Metal 9 mm



Lamiera / K01898324BAP

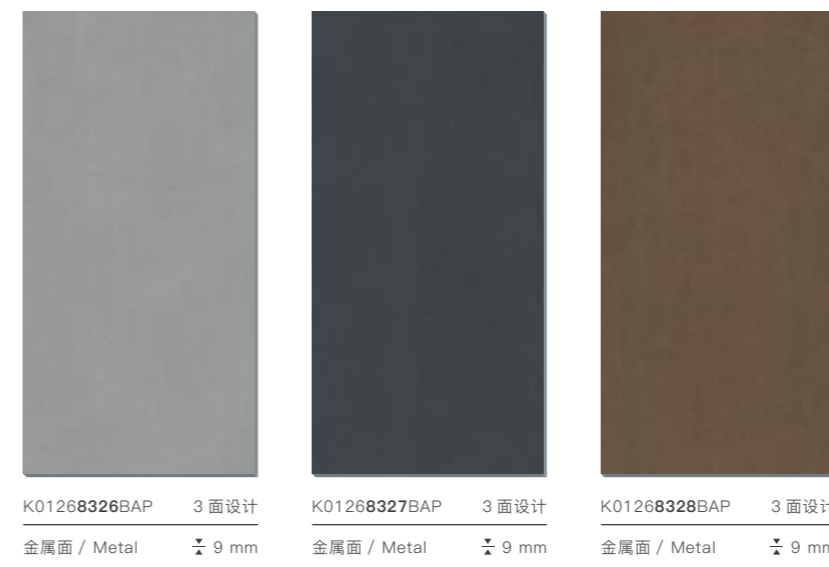
Lamiera / K01898325BAP

10 花色 DESIGN

2 质面 SURFACES



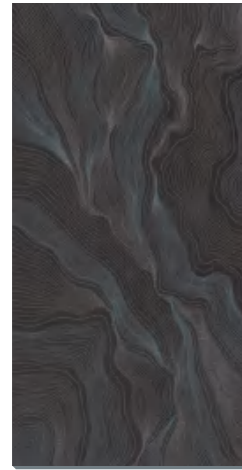
埃菲尔 Metallika





埃菲尔·配件

Metallika·Decor



K01268327HBH-1 1面设计
金闪浮雕面 9 mm
Glitter Embossed Surface



K01268327HBH-2 1面设计
金闪浮雕面 9 mm
Glitter Embossed Surface



K01268328HBH-1 1面设计
金闪浮雕面 9 mm
Glitter Embossed Surface



K01268328HBH-2 1面设计
金闪浮雕面 9 mm
Glitter Embossed Surface



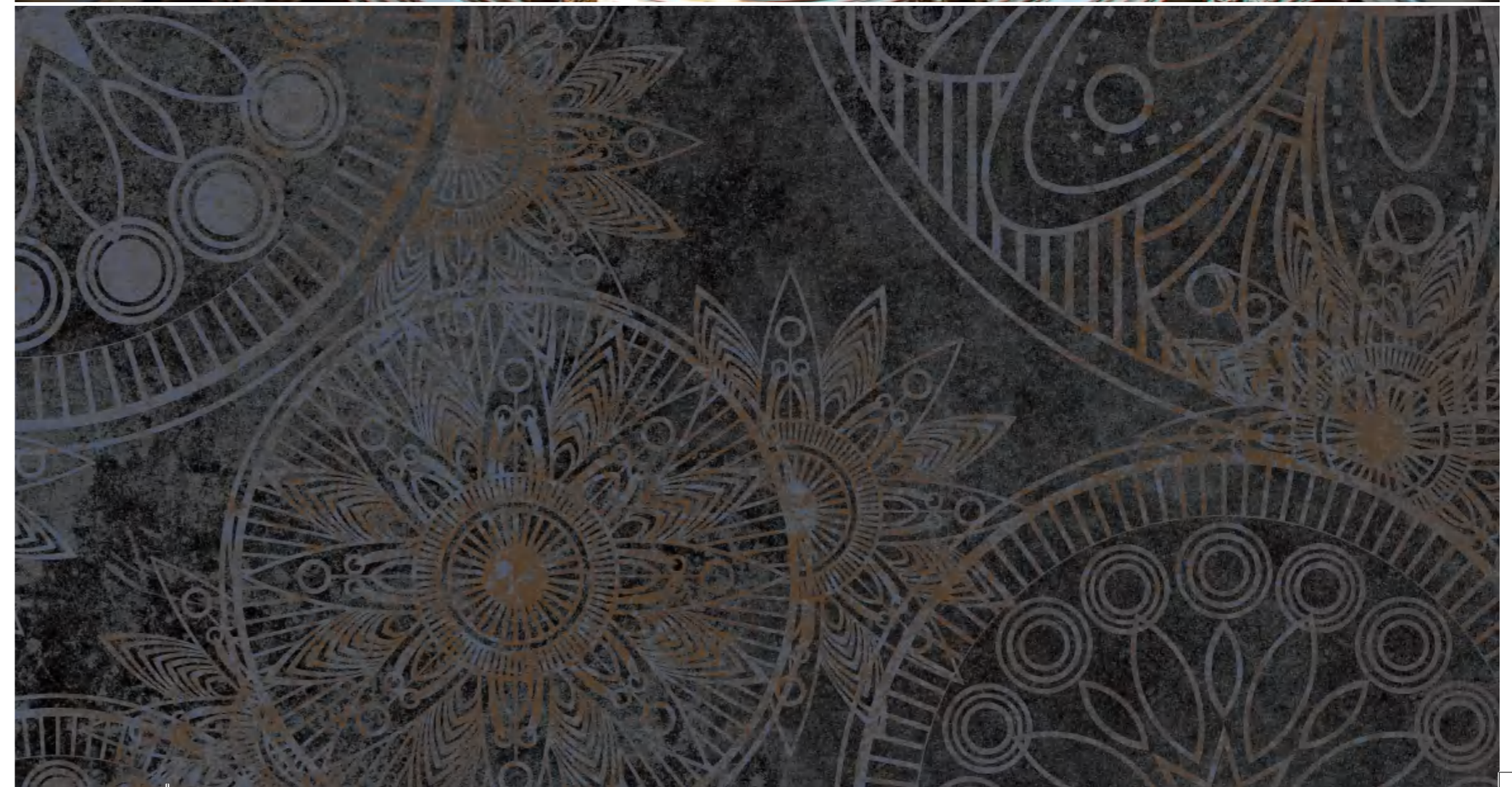
K01268326HBH-1A/B 2面设计
金闪浮雕面 9 mm
Glitter Embossed Surface



K01268326HBH-2A/B 2面设计
金闪浮雕面 9 mm
Glitter Embossed Surface



K01268327HBH-3A/B 2面设计
金闪浮雕面 9 mm
Glitter Embossed Surface



6 花色 DESIGN

2 质面 SURFACES



莫兰迪 Colorset



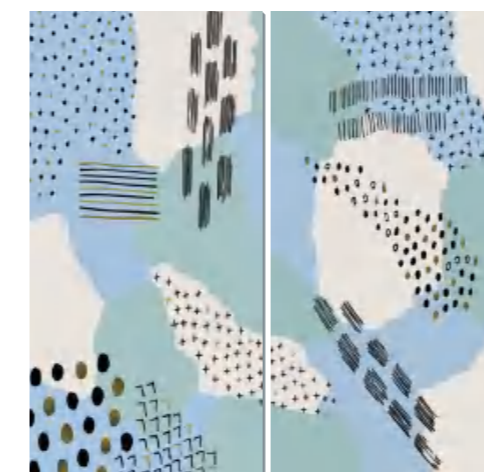
K01268329BAR 3 面设计
雅光银丝面 / Lappato 9 mm

K01268330BAR 3 面设计
雅光银丝面 / Lappato 9 mm

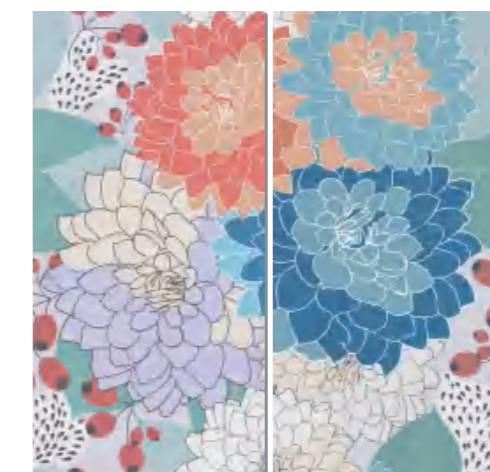
K01268331BAR 3 面设计
雅光银丝面 / Lappato 9 mm

K01268332BAR 3 面设计
雅光银丝面 / Lappato 9 mm

莫兰迪·配件 Colorset·Decor



K01268330HBH-1 2 面设计
金闪浮雕面 9 mm
Glitter Embossed Surface

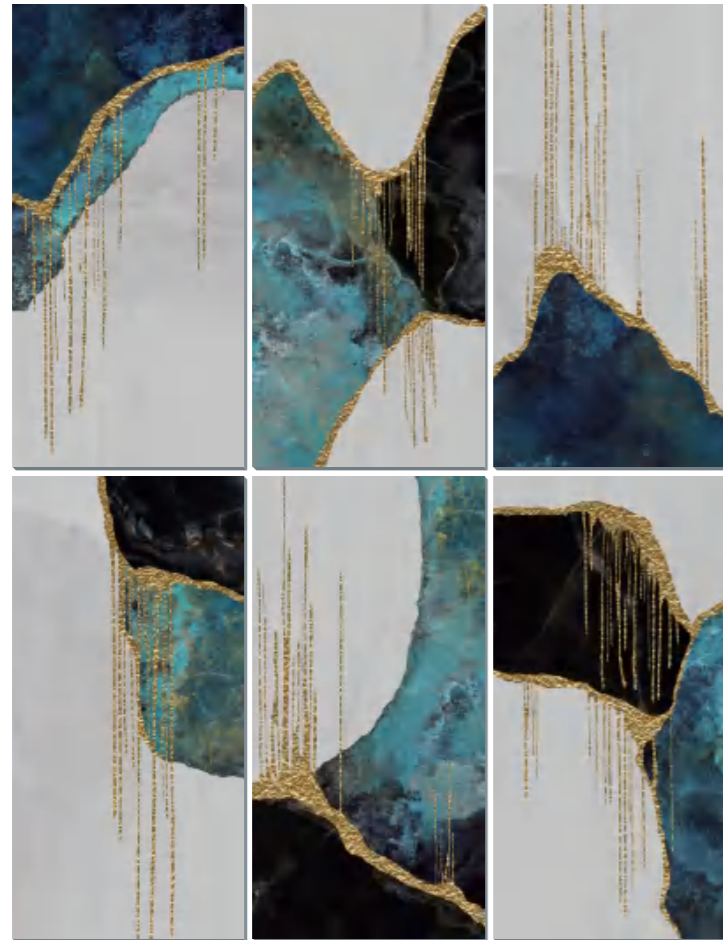


K01268330HBH-2A/B 2 面设计
金闪浮雕面 9 mm
Glitter Embossed Surface



Colorset-Dekor / K01268330HBH-2A/B

金风玉露
Treasure



K01268085ABR 6面设计
喷金喷银 11mm
High temperature Metallic

画堂春
Vitality



K01268146ABH 1面设计
喷金喷银 11mm
High temperature Metallic

K01268147ABH 1面设计
喷金喷银 11mm
High temperature Metallic

126

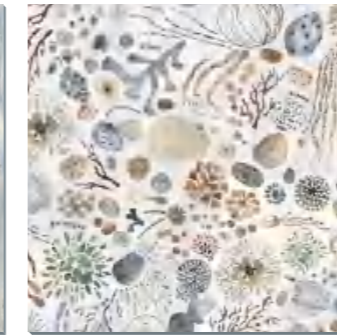
1200x600 mm 规格产品

假日黄昏
Sunset



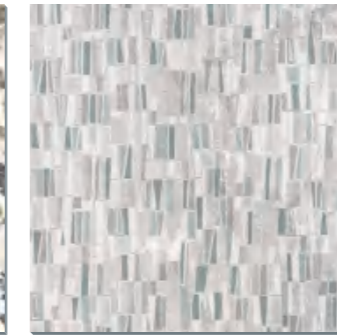
K00908150ABR 4面设计
5代糖果釉 / Sugar 5.0 11mm

满庭芳
Oceana



K00908104HBR 4面设计
5代糖果釉 / Sugar 5.0 11mm

青玉案
Jasper



K00908105HBR 1面设计
5代糖果釉 / Sugar 5.0 11mm

900

900x900 mm 规格产品

悠
Leisure

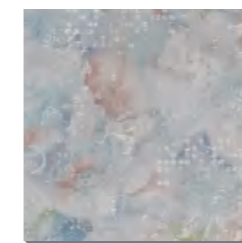


K00808114HBN 4面设计
雅光面 / Matte 11mm

800

800x800 mm 规格产品

幻彩
Rainbow



K00608093HBH 2面设计
喷金喷银 9.5mm
High temperature Metallic

600

600x600 mm 规格产品



Treasure / K01268085ABR



900

900x900 mm 规格产品

欧洲大理石 / Euro

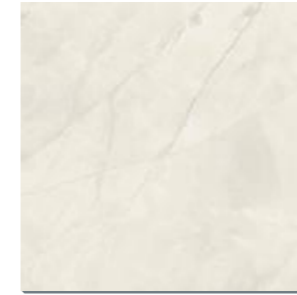
安卡拉 / Ankara

纳克索斯 / Naxos

莫尼卡 / Monica

欧洲大理石

Euro



K0903610YAM 6面设计
20°绒面 / 20° Honed 11 mm



K0903611YAM 6面设计
20°绒面 / 20° Honed 11 mm



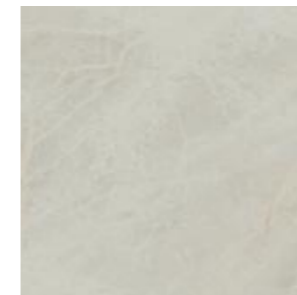
K0903612YAM 6面设计
20°绒面 / 20° Honed 11 mm



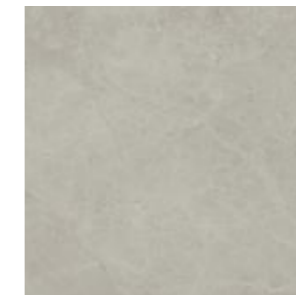
K0903613YAM 6面设计
20°绒面 / 20° Honed 11 mm

安卡拉 阳光健康砖

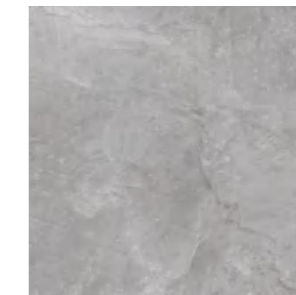
Ankara



K0903679YAM 10面设计
35°腊光面 / 35° Honed 11 mm



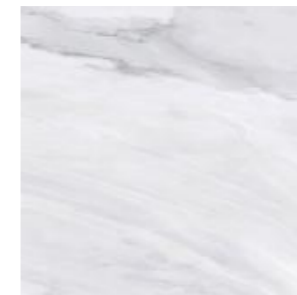
K0903680YAM 10面设计
35°腊光面 / 35° Honed 11 mm



K0903681YAM 10面设计
35°腊光面 / 35° Honed 11 mm

纳克索斯 阳光健康砖

Naxos



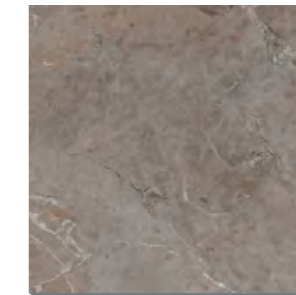
K0903791YAM 6面设计
35°腊光面 / 35° Honed 11 mm



K0903792YAM 6面设计
35°腊光面 / 35° Honed 11 mm

莫尼卡

Monica



K0903287YAM 9面设计
55°柔光面 / 55° Honed 11 mm



Story I / K0903729GAP

900

900×900 mm 规格产品

故事第一季 / Story I

梧桐下 / Shadecon

故事第一季 Story I



K0903729GAP 12 面设计
第 3 代糖果釉 / Sugar 3.0 11 mm



K0903730GAP 12 面设计
第 3 代糖果釉 / Sugar 3.0 11 mm

故事第一季 - 配件 Story I · Decor



K9453729GHJ 4 面设计
第 3 代糖果釉 / Sugar 3.0 11 mm

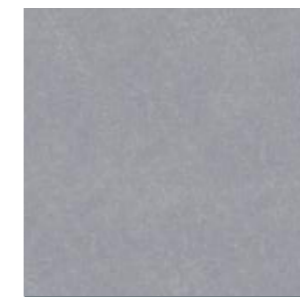


K9453730GHJ 4 面设计
第 3 代糖果釉 / Sugar 3.0 11 mm

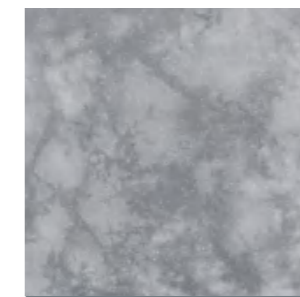
梧桐下 Shadecon



K00908292GAM 4 面设计
第 4 代糖果釉 / Sugar 4.0 11 mm



K00908293GAM 4 面设计
第 4 代糖果釉 / Sugar 4.0 11 mm



K00908345GAM 4 面设计
第 4 代糖果釉 / Sugar 4.0 11 mm



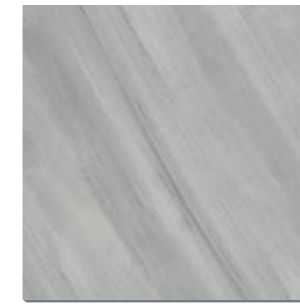
Shadecon / K00908345GAM

17 花色 DESIGN

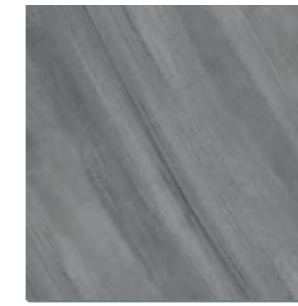
3 质面 SURFACES



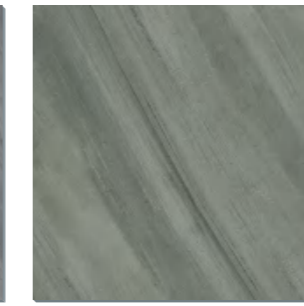
清平乐 | 降醛健康砖 Carefree



K00908150DAR 6面设计
5代糖果釉 / Sugar 5.0 ± 11 mm

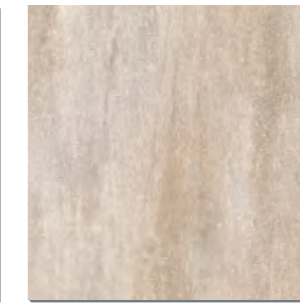


K00908151DAR 6面设计
5代糖果釉 / Sugar 5.0 ± 11 mm



K00908152DAR 6面设计
5代糖果釉 / Sugar 5.0 ± 11 mm

凯悦金沙 Hyatt

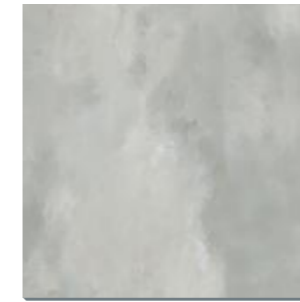


K0903715DAP 7面设计
2代糖果釉 / Sugar 2.0 ± 11 mm



K0903716DAP 9面设计
2代糖果釉 / Sugar 2.0 ± 11 mm

江南岸 | 降醛健康砖 Mysterious



K00908153DAR 6面设计
5代糖果釉 / Sugar 5.0 ± 11 mm

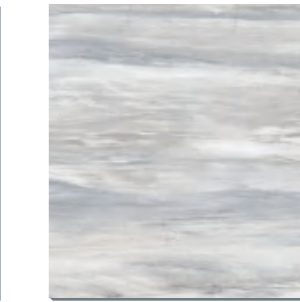


K00908154DAR 6面设计
5代糖果釉 / Sugar 5.0 ± 11 mm



K00908155DAR 6面设计
5代糖果釉 / Sugar 5.0 ± 11 mm

水墨山河 Landscape



K0903712DAP 6面设计
2代糖果釉 / Sugar 2.0 ± 11 mm

天空之城 | 阳光健康砖 Sky City



K0903652DAP 6面设计
2代糖果釉 / Sugar 2.0 ± 11 mm

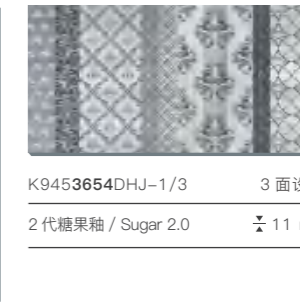


K0903653DAP 6面设计
2代糖果釉 / Sugar 2.0 ± 11 mm



K0903654DAP 6面设计
2代糖果釉 / Sugar 2.0 ± 11 mm

天空之城·配件 Sky City·Decor

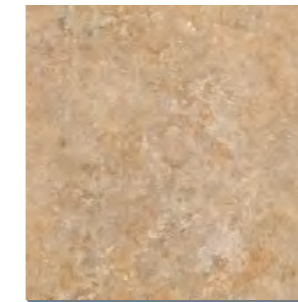


K9453654DHJ-1/3 3面设计
2代糖果釉 / Sugar 2.0 ± 11 mm

古韵逸香 Melody

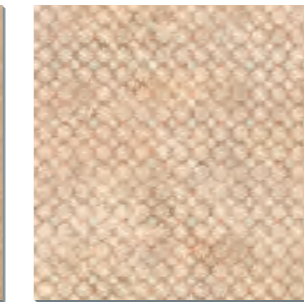


K0903335DAP 随机面
1代糖果釉 / Sugar 1.0 ± 11 mm



K0903337DAP 随机面
1代糖果釉 / Sugar 1.0 ± 11 mm

古韵逸香·配件 Melody·Decor



K0903337DHP-1/8 8面设计
1代糖果釉 / Sugar 1.0 ± 11 mm



K0903337DHP2 1面设计
1代糖果釉 / Sugar 1.0 ± 11 mm



800

800x800 mm 规格产品

维纳斯 / Venus

索伦特 / Sorrento

格拉斯 / Lakis

Lakis / K00808233TAN

缎

光面
MATTE

雅

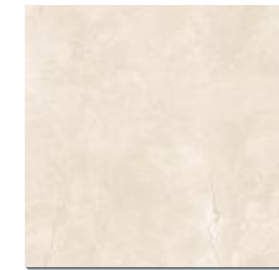
光面
MATTE

古

玩面
LAPPATO

维纳斯

Venus



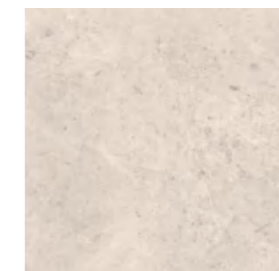
K0804910DA 6面设计
缎光面 / Matte 11 mm



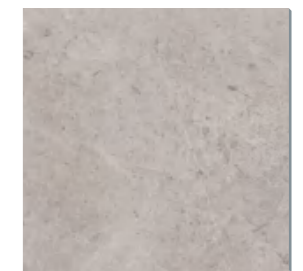
K0804911DA 6面设计
缎光面 / Matte 11 mm

索伦特

Sorrento



K0803948DA 8面设计
雅光面 / Matte 11 mm



K0803949DA 8面设计
雅光面 / Matte 11 mm

格拉斯

Lakis



K00808232TAN 1面设计
古玩面 / Lappato 10 mm



K00808233TAN 1面设计
古玩面 / Lappato 10 mm



600

600x600 mm 规格产品



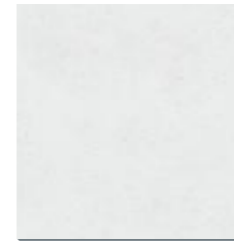
满清池 / Portland

沙洲玉 / Sand

梅森布纹 / Fabric

艾万卡 / Evanka

满清池 Portland



K00608260TAN 6面设计
雅光面 / Matte 10 mm



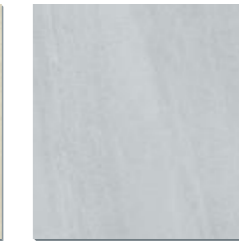
K00608261TAN 6面设计
雅光面 / Matte 10 mm



K00608262TAN 6面设计
雅光面 / Matte 10 mm



K00608250TAN 6面设计
雅光面 / Matte 10 mm



K00608251TAN 6面设计
雅光面 / Matte 10 mm

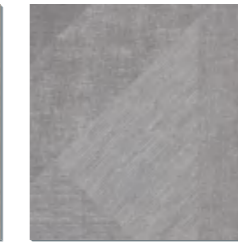
梅森布纹 Fabric



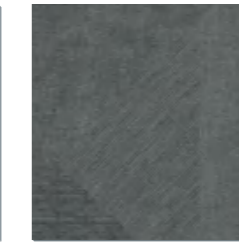
K0603541DA 9面设计
雅光面 / Matte 10 mm



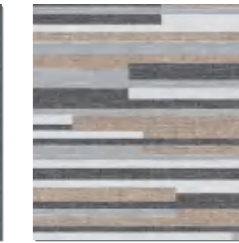
K0603542DA 9面设计
雅光面 / Matte 10 mm



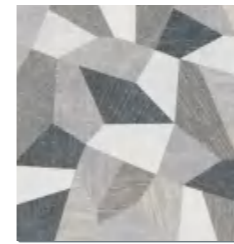
K0603543DA 9面设计
雅光面 / Matte 10 mm



K0603544DA 9面设计
雅光面 / Matte 10 mm



K0603541DH-1 2面设计
雅光面 / Matte 10 mm

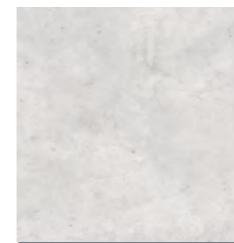


K0603541DH-2 4面设计
雅光面 / Matte 10 mm



K0603541DH-3 3面设计
雅光面 / Matte 10 mm

艾万卡 Evanka



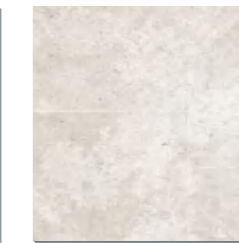
K0603666TA 6面设计
雅光面 / Matte 10 mm



K0603667TA 6面设计
雅光面 / Matte 10 mm



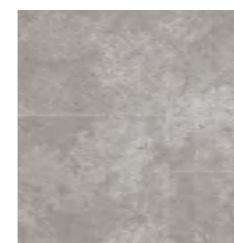
K0603668TA 6面设计
雅光面 / Matte 10 mm



K0603666TH 4面设计
雅光面 / Matte 10 mm



K0603667TH 4面设计
雅光面 / Matte 10 mm



K0603668TH 4面设计
雅光面 / Matte 10 mm

艾万卡 - 配件 Evanka·Decor

附录

技术参数 / Technical Data



性能 Properties	单位 Unit of Measurement	欧标 Euro Standard	国标 Chinese Standard (GB/T4100-2015)	KITO 产品检测结果 KITO Actual Value					检测方法 Test Method
				600x600	900x900	1200x600	1500x750	1800x900	
吸水率 Water absorption	%	≤ 0.5	≤ 0.5	0.12	0.05	0.06	0.07	0.05	UNI EN ISO 10545-3
长度和宽度 Dimensions Length and Width	%	± 0.6 max	± 0.6 max	± 0.2	±0.2	±0.2	±0.4	±0.3	UNI EN ISO 10545-2
厚度 Thickness	mm	± 1.0 max	± 1.0 max	± 0.3	±0.3	±0.3	±0.3	±0.5	UNI EN ISO 10545-2
边直度 Side Straightness	%	± 0.5 %	± 0.3 %	± 0.3%	±0.3%	±0.3%	±0.3%	±0.3%	UNI EN ISO 10545-2
直角度 Corner Squareness	%	± 0.6 max	± 0.4 max	± 0.2	±0.2	±0.2	±0.2	±0.3	UNI EN ISO 10545-2
表面平整度 Flatness	%	± 0.5 max	± 0.4 max	0.1	0.1	0.1	0.3	0.3	UNI EN ISO 10545-2
破坏强度 Breaking Strength	N	≥ 1300	≥ 1300	2764	2918	2715	4340	3157	UNI EN ISO 10545-4
断裂模数 Modulus of Rupture	Mpa	≥ 35	≥ 35	52	46.5	38.6	50	-	UNI EN ISO 10545-4
抗热震性 Thermal Shock Resistance	—	Testing method available		Conform	Conform	Conform	Conform	Conform	UNI EN ISO 10545-9
抗冻性 Frost-Resistance	—	Testing method available		Conform	Conform	Conform	Conform	Conform	UNI EN ISO 10545-12
耐酸碱 Resistant to Acids and Low Concentration Bases	—	Testing method available		HA	HA	HA	HA	HA	UNI EN ISO 10545-13
耐污染性 Stain Resistance	—	≥ Class 3	≥ Class 3	Class 5	Class 5	Class 5	Class 5	Class 5	UNI EN ISO 10545-14

附录

包装信息 / Packing Info

尺寸 / Size (mm)	每箱 / Box			每托 / Pallet (出口 Export)				每个 20尺柜 / Container (出口 Export)			
	片 / Pcs	平米 / Sqm	重量 / Kg	箱数 / Ctn	平米 / Sqm	重量 / Kg	托盘尺寸 Plt Size(mm)	托数 / Plt	箱数 / Ctn	平米 / Sqm	重量 / G.W
1800×900×11	1	1.62	44.5	34	55.08	1513	1860×1100	12	408	660.96	18156
1500×750×11	2	2.25	58.5	23	51.75	1346	1650×1100	20	460	1035	26910
1500×250×11	4	1.5	39	54	81	2106	1540×960	12	648	972	25272
1200×600×10	2	1.44	34.5	35	50.4	1208	960×1240	21	735	1058.4	25358
1200×200×10	6	1.44	34	39	56.16	1326	960×1240	19	741	1067.04	25194
900×900×11	2	1.62	41.5	40	64.8	1660	1100×1100	17	680	1101.6	28220
900×450×11	3	1.215	32	52	63.18	1664	1100×1100	16	832	1010.88	26624
600×600×10	4	1.44	32	36	51.84	1152	1100×1100	22	792	1140.48	25344
600×600×10	4	1.44	32	32	46.08	1024	1200×800	25	800	1152	25600
600×600×15	8	1.44	32	40	57.6	1280	1100×1100	20	800	1152	25600
600×300×10	3	1.08	37.5	32	34.56	1200	1100×1100	21	672	725.76	25200
600×600×20	2	0.72	34	36	25.92	1224	1100×1100	22	792	570.24	26928
300×600×20	4	0.72	33	3	25.92	1188	1100×1100	22	792	570.24	26136
800×300×9	6	1.44	26.4	57	82.08	1505	1100×1100	18	1026	1477.44	27086

尺寸 / Size (mm)	每箱 / Box			每托 / Pallet (出口 Export)				每个 40尺柜 / Container 40'HQ (出口 Export)			
	片 / Pcs	平米 / Sqm	重量 Kg	片数 / Pcs	平米数 / Sqm	重量 / Kg	托盘尺寸 Plt Size(mm)	托数 / Plt	片数 / Pcs	平米数 / Sqm	重量 / G.W
2600×800×9	1	2.08	45.9	20	41.6	918	2800×960×450	26	520	1081.6	23868
1200×2400×9	1	2.88	62	16	46.08	992	2590×1310×385	24	384	1105.92	23808
1600×1600×9	1	2.56	56	24	61.44	1344		18	432	1105.92	24192
1600×3200×9	1	5.12	110	24	122.88	2640		9	216	1105.92	23760