



ZF·CARD



Guangzhou Zhanfeng Smart Card Technology Co.,Ltd.

Address: 5th Floor, Building A5, No. 11 Kaiyuan Avenue, Science City,
High-tech Industrial Development Zone, Guangzhou

Tel: 020 - 82029598 / 82029192

Fax: 020 - 82085179

Website: [Http://www.zfcards.com](http://www.zfcards.com)

[Http://www.zfcards.com](http://www.zfcards.com)



Contents:

Company Profile	2
Corporate Culture	4
Application	6
Product List	8
Contactless IC Card	10
Contactless ID Card	15
Contact IC Card	18
Inlay	21
USB card	22
Rfid Wristband	23
Key chain	24
Organizational Structure	25
Smart Card Parameter List	26
Production Equipment	28



Guangzhou Zhanfeng Smart Card Technology Co.,Ltd.



Company Profile



Guangzhou Zhanfeng Smart Card Technology Co.,Ltd is one of the world's biggest smart card manufacturers. Our company is located in Guangzhou Science City, covering 3,000 square meters of production base and with output 18 million cards per month, more than 200 employees, 20 R & D technical staffs. At the same time with years of rich experience in production management ,excellent quality certification,leading card technology and production line, enclosed factory, dust-free workshop, our company committed to supply customers with high-quality products and a full range of value-added services.

Now we have introduced lots of advanced production equipments, such as Heidelberg five-color offset printing machine, chip sealing machine, automatic on-line machine, full-automatic welding machine, computer numerical cutting card machine, automatic chipping code printing machine, embossing number machine, laser coding machine, automatic detection machine etc.. And Our card meet the international smart card standard.

We have various products such as contactless IC card, ID card, M1 card, RFID card、 NXP S50、 S70、 SLE4442、 4428, T5577, MF DESFIRE、 ATMEL serial cards, CPU card, dural frequency card, RFID tag, key chain card, UHF card, membership card etc. They are widely used inrestaurant, finance, hairdressing, telecom, telecommunications, tax, hospital, insurance, and traffic areas.

Especially these years,we have remarkable performance in the field of transportation and social security.We has provided IC cards and related value-added service for many large and medium-sized cities in China with city all in one card, railway transportation card and social security card. With super service and good quality, our products are popular among customers all over the world.

Thanks to the great support from our customers ,our high credibility and efficient service which made us grow up faster. Now we have a number of high-quality, young, professional staffs and excellent office environment. According to the market, we constantly design, research and developnew products in order to provide high-quality products for each customer.

We adhere to the philosophy "Quality first, service upmost" and enhance the management and improve our brand image. We uphold "talent-level" management thought, focus on technologyandhighlight quality,continue to carry forward the spirit of innovation, so let us work together to create a better future!





Corporate Culture

Corporate Responsibility

Promote National Science and Technology,
Great A Global Brand

Corporate Philosophy

Profession, Concentration, Innovation

Corporate Values

Mutual Trust and Win-Win

People Oriented , Culture Focused

It is developed and gradually formed the characteristics of the cultural system in years.

ZF card culture regards the concept of innovation as the guide, the strategic innovation as the basis, the organized innovation as a guarantee, the technological innovation as a mean, the marketing innovation as a goal, along with our company from small to large, from weak to strong. Our staffs generally agree that active participation is the most important feature of ZF card culture.

To provide customers with quality service, reliable product is ZF card main driving force, and stable product quality depends on our high-quality management and development team for many years of efforts. Quality and service has long been integrated into the ZF card culture.



Corporate Culture

Customers, Quality-The Life Of Company

Service, Innovation-The Soul Of Company



Application

Campus all in one card



All in one IC card system plays a role as a bridge in the campus , through the management of connecting other modules to improve the whole campus effectively, all work becomes efficient and convenient. Campus IC card with electronic identification and electronic wallet function which can replace the teacher work permit, student card, library card, canteen food card, medical certificate, sports and entertainment facilities membership card and cash transactions , makes the entertainment, consumption, catering and other charges electronic and intelligent.



Meeting management system



Designed for work meetings of party and government, people's congresses, CPPCC, universities, large and medium-sized enterprises and institutions , it is the efficient, convenient and manageable organizations smart system for implement large-scale meetings. Conference signings support contactless IC / ID RFID card identification, with quick signing, support meetings' sign for different meeting and other functions. It convenience the attendee to attend sign in, meeting management personnel's statistics and consult, provide the informationalized solution for management the attendee's meeting signing.



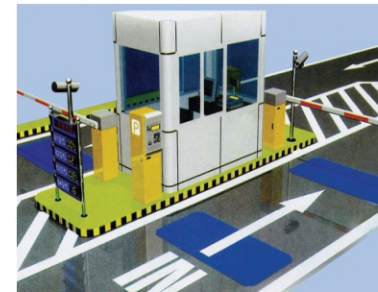
City all in one card



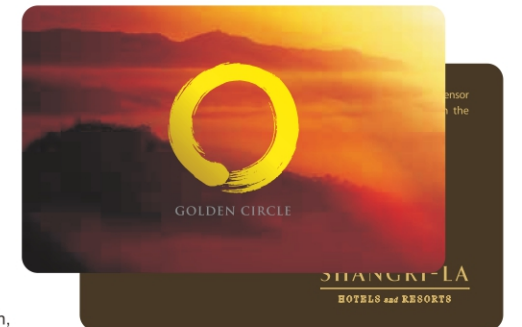
All in one IC card system release the IC card to the people in the city, and then record the public's daily life information, creating a new way for the city public utilities such as transportation, gas stations, parking lots, property, community management and other consumption projects as stored value card for payment, relying on the city IC card system to carry out a comprehensive e-commerce platform.



Access control system



Access control system for a variety of confidential departments, such as campus, government agencies, bank, hotels, engine room, armory, confidential room, office area, intelligent community, factories and so on. It can set, change, cancel, and resume access permissions to people, also can store personnel access date, time, card number, whether illegal and other related information. Personnel using access card for passing, without security personnel interference, greatly improving the efficiency of the passage; If the card number is not correct or in blacklist , the door will be closed and alarm, effectively protect the security issues, played a certain control for the illegal intrusion, the door lock was damaged and other harsh conditions .



Enterprise all in one card



Enterprise all in one card takes the smart card as a medium, creating a management system for attendance, access control, payroll, charge business. With these functions, it is not only to facilitate the management of enterprise but also greatly improve the efficiency.



Member consumption management system



Membership management system can bring a lot of benefits to the enterprise, use IC card as the carrier, can store members' information, consumption, points, value records etc, as well as get business promotions and preferential policies from the merchants, through the IC card recording and storage information management effectively, bring good contact between businesses and customers at any time, so the customers will repeat consumption, improve customer loyalty, to achieve the purpose of performance growth. It can meet the variety of different situations demand of shopping malls, supermarkets, beauty salons, foot bath clubs, KTV bars, massage health centers, car beauty shops, food and beverage hotels, gymnasiums, training courses, gyms and other occasions.



Health insurance all in one card



Medical insurance management center use the computer network to achieve user file and fund data management, including hospital outpatient business process, pharmacy drug management, automatic pricing fees, hospital management module and so on. The insurance participants go to the designated hospitals, the security card can achieve from the registration, treatment, pricing, charges, medication, hospital and a series of records and management.



Cinema management system



Cinema management system is a powerful tool, and IC card as a carrier, playing very important role in the whole system, so must choose the high security, not easy to damage, high storage capacity, storage data stability, read and write performance stable card. Consumers use the IC card for pre-stored value or check-out processing, after inserting the IC card can not only show the previous consumption records, but also can add this recharge record or consumption records, to facilitate customers to check the details of each consumption, so that the cinema line can operate quickly and efficiently.



Product List



Product List



Contactless IC Card

MIFARE Classic® 1K Contactless IC Card

- ◇ IChip: NXP Mifare S50
- ◇ IStorage Capacity: 8Kbit, 16 partitions, each partition has two group passwords
- ◇ IWorking Frequency: 13.56MHz
- ◇ IDigital Refurbishing Frequency: 106KBoud
- ◇ IRead Distance: 2.5~10cm
- ◇ IReaction Time: 1~2ms
- ◇ IWorking Temperature: -20°C~85°C
- ◇ IReadable and Writable Times: >100,000 times
- ◇ IData Retention: >10 years
- ◇ ISize: 85.5x54x0.86mm standard/non-standard size card
- ◇ IRaw material: PVC, PET, 0.13copper wire
- ◇ IPackaging Technology: Automatic Ultrasonic Packaging Line/Automatic Butt-Weld
- ◇ IProduction Standards: ISO14443A, ISO10536
- ◇ IApplication: Enterprise/Campus One-Card, Public Transportation, Event Ticketing, Loyalty Cards, Bus Stored-Value Card, RFID Contactless Card in Freeway Collection Toll, Parking, Residential Management, Stored-value and the likes areas.



MIFARE Classic® 4K Contactless IC Card

- ◇ IChip: NXP Mifare S70(MOA2)
- ◇ IStorage Capacity: 32Kbit, 32partitions, each partition has two group passwords
- ◇ IWorking Frequency: 13.56MHz
- ◇ IDigital Refurbishing Frequency: 106KBoud
- ◇ IRead Distance: 2.5~10cm
- ◇ IReaction Time: 1~2ms
- ◇ IWorking Temperature: -20°C~85°C
- ◇ IReadable and Writable Times: >100,000 times
- ◇ IData Retention: >10 years
- ◇ ISize: 85.5x54x0.86mm standard/non-standard size card
- ◇ IRaw material: PVC, PET, 0.13copper wire
- ◇ IPackaging Technology: Automatic Ultrasonic Packaging Line/Automatic Butt-Weld
- ◇ IProduction Standards: ISO14443A, ISO10536
- ◇ IApplication: Enterprise/Campus One-Card, Public Transportation, Event Ticketing, Loyalty Cards, Bus Stored-Value Card, RFID Contactless Card in Freeway Collection Toll, Parking, Residential Management, Stored-value and the likes areas.



MIFARE Ultralight® Contactless IC Card

- ◇ IChip: NXP MF Ultralight
- ◇ IStorage Capacity: 512bits
- ◇ IWorking Frequency: 13.56MHz
- ◇ IRead Distance: 1~8cm
- ◇ IReaction Time: 112ms
- ◇ IWorking Temperature: -20°C~85°C
- ◇ IReadable and Writable Times: >10,000 times
- ◇ IData Retention: >5 years
- ◇ ISize: 85.5x54x0.86mm standard/non-standard size card
- ◇ IRaw material: PVC, PET,
- ◇ IPackaging Technology: PVC Lamination
- ◇ IProduction Standards: ISO14443A,
- ◇ IApplication: RFID Contactless Card In Underground, Door/Room Key Card, Transportation, Entrance, Security and the likes areas.



MIFARE Ultralight® C Contactless IC Card

- ◇ IChip: NXP MF Ultralight C
- ◇ IStorage Capacity: 1536 bits (192 bytes)
- ◇ IWorking Frequency: 13.56MHz
- ◇ IRead Distance: 1~8cm
- ◇ IReaction Time: 1~2ms
- ◇ IWorking Temperature: -20°C~85°C
- ◇ IReadable and Writable Times: >10,000 times
- ◇ IData Retention: >5 years
- ◇ ISize: 85.5x54x0.86mm standard/non-standard size card
- ◇ IRaw material: PVC, PET,
- ◇ IPackaging Technology: PVC Lamination
- ◇ IProduction Standards: ISO14443A,
- ◇ IApplication: RFID Contactless Card In Underground, Door/Room Key Card, Transportation, Entrance, Security and the likes areas.



Contactless IC Card

MIFARE Ultralight® EV1 Contactless IC Card

- ◇ IChip: NXP MF Ultralight EV1
- ◇ IStorage Capacity: 384bits / 1024 bits
- ◇ IWorking Frequency: 13.56MHz
- ◇ IRead Distance: 1~8cm
- ◇ IReaction Time: 1~2ms
- ◇ IWorking Temperature: -20°C~85°C
- ◇ IReadable and Writable Times: >100,000 times
- ◇ IData Retention: >5 years
- ◇ ISize: 85.5x54x0.86mm standard/non-standard size card
- ◇ IRaw material: PVC, PET,
- ◇ IPackaging Technology: PVC Lamination
- ◇ IProduction Standards: ISO14443A,
- ◇ IApplication: RFID Contactless Card In Underground, Door/Room Key Card, Transportation, Entrance, Security and the likes areas.



MIFARE® DESFire® EV1 2K/4K/8K Contactless IC Card

- ◇ IChip: NXP MF Ultralight EV1
- ◇ IStorage Capacity: 384bits / 1024 bits
- ◇ IWorking Frequency: 13.56MHz
- ◇ IRead Distance: 1~8cm
- ◇ IReaction Time: 1~2ms
- ◇ IWorking Temperature: -20°C~85°C
- ◇ IReadable and Writable Times: >100,000 times
- ◇ IData Retention: >5 years
- ◇ ISize: 85.5x54x0.86mm standard/non-standard size card
- ◇ IRaw material: PVC, PET,
- ◇ IPackaging Technology: PVC Lamination
- ◇ IProduction Standards: ISO14443A,
- ◇ IApplication: RFID Contactless Card In Underground, Door/Room Key Card, Transportation, Entrance, Security and the likes areas.



Fudan M1 Contactless IC Card

- ◇ IChip: FM11RF08
- ◇ IStorage Capacity: 1024*8bit, EEPROM memory location, 16 individual safeguard sections, which allow multiple application, and each section has two different passwords.
- ◇ IWorking Frequency: 13.56MHz
- ◇ IDigital Refurbishing Frequency: 106KBoud
- ◇ IRead Distance: 2.5~10cm
- ◇ IReaction Time: 1~2ms
- ◇ IWorking Temperature: -20°C~85°C
- ◇ IReadable and Writable Times: >100,000 times
- ◇ IData Retention: >10 years
- ◇ ISize: 85.5x54x0.86mm standard/non-standard size card
- ◇ IRaw material: PVC, PET, 0.13copper wire
- ◇ IPackaging Technology: Automatic Ultrasonic Packaging Line/Automatic Butt-Weld
- ◇ IProduction Standards: ISO/IEC14443A
- ◇ IApplication: Enterprise/Campus One-Card, Public Transportation, Event Ticketing, Loyalty Cards, Bus Stored-Value Card, RFID Contactless Card in Freeway Collection Toll, Parking, Residential Management, Stored-value and the likes areas.



I CODE SLI Contactless IC Card

- ◇ IChip: NXP I CODE SLI/SLI-X
- ◇ IStorage Capacity: 1024bit
- ◇ IWorking Frequency: 13.56MHz
- ◇ IRead Distance: 2.5~10cm
- ◇ IReaction Time: 1~2ms
- ◇ IWorking Temperature: -20°C~85°C
- ◇ IReadable and Writable Times: >100,000 times
- ◇ IData Retention: >10 years
- ◇ ISize: 85.5x54x0.86mm standard/non-standard size card
- ◇ IRaw material: PVC, PET, 0.13copper wire
- ◇ IPackaging Technology: Automatic Ultrasonic Packaging Line/Automatic Butt-Weld
- ◇ IProduction Standards: ISO15693
- ◇ IApplication: Enterprise/Capus one-card, Bus Stored- Value Card, RFID Contactless Card in Freeway Collecting Toll, Air Baggage Tracking, Logistics Transportation and the likes areas.



Contactless IC Card

TI Contactless IC Card

- ◇ IChip: TI2048
- ◇ IStorage Capacity: 2Kbit with 64x32 sector and unique 64 bit serial number
- ◇ IWorking Frequency: 13.56MHz+/-200KHz
- ◇ IDigital Refurbishing Frequency: 106KBoud
- ◇ IRead Distance: 5cm for standard desktop card reader
- ◇ IReaction Time: 1~2ms
- ◇ IWorking Temperature: -20°C~85°C
- ◇ IReadable and Writable Times: >100,000 times
- ◇ IData Retention: >10 years
- ◇ ISize: 85.5x54x0.86mm standard/non-standard size card
- ◇ IRaw material: PVC, PET, 0.13copper wire
- ◇ IPackaging Technology: PVC Lamination
- ◇ IProduction Standards: ISO15693
- ◇ IApplication: Sign-in for Meeting, Attendance Card, Learning Management, Enterprise One-Card, Bus Stored-Value Card, Freeway Collecting Toll, Parking, Entrance Access, Barrier-Free Way ect.



CPU Contactless IC Card

- ◇ IChip: CPUFM1204/1208
- ◇ IStorage: ROM,EEPROM,RAM
- ◇ IStorage Capacity: 4Kbyte/8Kbyte
- ◇ IWorking Frequency: 13.56MHz
- ◇ IDigital Refurbishing Frequency: 106KBoud
- ◇ IRead Distance: 2.5~10cm
- ◇ IReaction Time: 1~2ms
- ◇ IWorking Temperature: -20°C~85°C
- ◇ IReadable and Writable Times: >100,000 times
- ◇ IData Retention: >10 years
- ◇ ISize: 85.5x54x0.86mm standard/non-standard size card
- ◇ IRaw material: PVC, PET, 0.13copper wire
- ◇ IPackaging Technology: Automatic Ultrasonic Packaging Line/Automatic Butt-Weld
- ◇ IProduction Standards: ISO14443A
- ◇ IApplication: Government Sector, Financial Instrument, Air Transport, Army, War Industry and the likes enterprise which require high standard security assurance.



Contactless ID Card

Contactless 125KHz TK4100 Proximity Card (Read Only)

Description

The TK4100 is a CMOS integrated circuit for use in electronic Read Only RF Transponders. By turning on and off the modulation current, the chip will send back the 64 bits of information contained in a factory preprogrammed memory array.

Features

- * Chip: Taiwan4100 COB
- * Memory: 64 bit (8 byte)
- * Operating frequency: 100 - 150 KHz, typical frequency: 125 KHz
- * Sensing distance: 2-15mm
- * Size: ISO Standard Card / Clamshell Card / Irregular Cards
- * Packaging material: PVC, ABS, PET, PC
- * Temperature range: -40°C to + 85°C
- * Full wave rectifier on chip
- * Very low power consumption
- * Application: ID Card / Access Control / Read only memory in identify serial number / Automatic Management / Industrial Production, etc.



Contactless 125KHz EM4100 Proximity Card (Read Only)

Description

The EM4100 (previously named H4100) is a CMOS integrated circuit for use in electronic Read Only RF Transponders.

Features

- * Chip: EM Microelectronic-Marin SA (Switzerland)
- * Memory: 64 bit (8 byte)
- * Operating frequency: 100 - 150 KHz, typical frequency: 125 KHz
- * Sensing distance: 2-15mm
- * Size: ISO Standard Card / Clamshell Card / Irregular Cards
- * Packaging material: PVC, ABS, PET, PC
- * Temperature range: -40°C to + 85°C
- * Full wave rectifier on chip
- * Very low power consumption
- * Application: ID Card / Access Control / Logistics automation / Anticounterfeiting / Industrial transponder, etc.



Contactless ID Card



125KHz EM4200 Proximity Card (Read Only)



◇ Description

The EM4200 is a CMOS integrated circuit intended for use in electronic Read Only RF transponders. It is designed to replace directly the EM Microelectronic Marin Read Only ICs EM4100/4102 and EM4005/4105.

◇ Features

- * Chip: EM Microelectronic-Marin SA (Switzerland)
- * Full compatible with EM4100/4102 and EM4005/4105 communication protocols.
- * Memory: 128 bit laser programmed ROM (64 and 96 bit option available)
- * Operating frequency: 100 - 150 KHz, typical frequency: 125 KHz
- * Sensing distance: 2-15mm
- * Size: ISO Standard Card / Clamshell Card / Irregular Cards
- * Packaging material: PVC, ABS, PET, PC
- * Temperature range: -40°C to + 85°C
- * Full wave rectifier on chip
- * Very low power consumption
- * Application: Access Control / Waste management standard / Animal Identification according to ISO11785 / Logistics automation / Anticounterfeiting / Industrial transponder, etc.



UHF 6C Card



◇ Features

- * Chip: Alien Technology®
- * EPC Gen 2 (v1.2.0) compliant
- * ISO/IEC 18000-6C compliant
- * Worldwide RFID UHF operation (860-960MHz)
- * 512-bit User Memory, 32 sectors, 16 bits/sector
- * Operating Mode: Read & Write
- * Pre-programmed with a unique, unalterable 64-bit serial number
- * Sensing distance: 3-12 meters (match with different antenna and reader)
- * Temperature range: 0°C to -70°C
- * Transfer speed: 60km/h
- * Anti-collision Loop: apply to multi label reading
- * Data retention: 10 Years



ATMEL ATA5577 Proximity Card

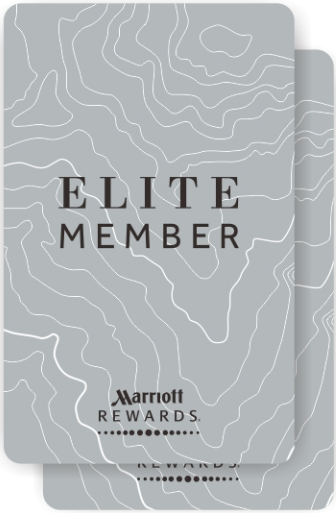


◇ Description

The ATMEL® ATA5577C is a contactless read/write IDentification IC (IDIC®) for applications in the 125kHz or 134kHz frequency band. A single coil connected to the chip serves as the IC's power supply and bi-directional communication interface.

◇ Features

- * Chip: ATMEL® Corporation (USA)
- * EEPROM Memory: 363 bits, 11 blocks (32 bits + 1 lock bit)
- * ISO 11784 / 11785 Standard Compliant
- * Compatible with ATMEL® T5557, ATA5567
- * Operating frequency: 100 - 150 KHz, typical frequency: 125 KHz
- * Sensing distance: 3-10mm
- * Size: ISO Standard Card / Clamshell Card / Irregular Cards
- * Packaging material: PVC, ABS, PET, PC
- * Temperature range: -40°C to + 85°C
- * Application: Smart Lock / Access control / Animal ID and Waste Management, etc.



125KHz EM4305 Proximity Card (Read&Write)



◇ Description

The EM4305 is a CMOS integrated circuit intended for use in electronic Read/Write RF transponders. All EEPROM words can be write-protected by setting protection bits.

◇ Features

- * Chip: EM Microelectronic-Marin SA (Switzerland)
- * Memory: 512 bit
- * ISO 11784 / 11785 Standard Compliant
- * Compatible with EM4469/EM4569 communication protocol
- * Operating frequency: 100 - 150 KHz, typical frequency: 125 KHz
- * Sensing distance: 2-15mm
- * Size: ISO Standard Card / Clamshell Card / Irregular Cards
- * Packaging material: PVC, ABS, PET, PC
- * Temperature range: -40°C to + 85°C
- * Very low power consumption
- * Application: Access Control / Waste management standard / Industrial transponder / Animal Identification according to ISO FDX-B, etc.





ATMEL® AT88SC1608

◇ Description

The AT88SC1608 provides 17,408 bits of serial EEPROM memory organized as one configuration zone of 128 bytes and eight user zones of 256 bytes each. This device is optimized as a “secure memory” for the smart card market, secure identification for electronic data transfer, or components in a system, without the requirement of an internal microprocessor.

◇ Features

- * Chip: ATMEL® Corporation (USA)
- * Memory: 256 x 8 (16K bits) User Zones
- * One 128 x 8 (1K bit) Configuration Zone
- * ISO 7816 - 10 Standard Compliant
- * 16-byte Page Write Mode
- * High Security Memory Including Anti-wiretapping
- * Endurance: 100,000 Cycles
- * Data Retention: 100 Years
- * Application: Water Metering / Gas Metering , etc.



Siemens SLE 4442

◇ Description

SLE4442 provides a security code logic which controls the write/erase access to the memory. The SLE4442 contains a 4-byte security memory with an Error Counter EC (bit 0 to bit 2) and 3 bytes reference data. These 3 bytes as a whole are called Programmable Security Code (PSC).

◇ Features

- * Chip: Siemens AG
- * 256 Byte EEPROM organization
- * 32 x1-bit organization of protection memory
- * Answer-to-Reset according to ISO standard 7816-3
- * Data retention for minimum of 10 years
- * Endurance: 100,000 Cycles
- * Temperature range: 0°C - 70°C
- * Contact configuration and serial interface in accordance with ISO standard 7816
- * Data Memory alterable only after verification of 3 Byte PSC
- * PSC Code: FFFFFFFF



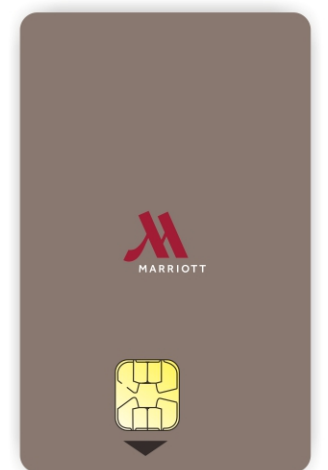
Siemens SLE 4428

◇ Description

The SLE4428 is organized in a Data Memory of 1024 byte. Each byte of the Data Memory can be irreversibly protected against data change by writing the corresponding bit in the Write Protection Memory. Altering data in the Data Memory as well as setting a Write Protection Bit is only possible after verification of the 2-Byte Programmable Security Code (PSC).

◇ Features

- * Chip: Siemens AG
- * 1024 x 8 bit (1K Byte) EEPROM organization of Data Memory
- * 1024 x 1bit organization of protection memory
- * Answer-to-Reset according to ISO standard 7816-5
- * Data retention for minimum of 10 years
- * Endurance: 100,000 Cycles
- * Temperature range: 0°C - 70°C
- * Serial synchronous three-wire link protocol according to ISO/IEC 7816
- * Data Memory alterable only after verification of 3 Byte PSC
- * PSC code: FFFF



ATMEL® AT24C02

◇ Features

- * Chip: ATMEL® Corporation (USA)
- * 256 x 8 bit (2K Byte) EEPROM organization
- * 100 kHz (1.8V) and 400 kHz (2.7V, 5V) Compatibility
- * Write Protect Pin for Hardware Data Protection
- * 8-byte Page Write Modes
- * Self-timed Write Cycle (5 ms max)
- * High-reliability
 - Endurance: 1 Million Write Cycles
 - Data Retention: 100 Years
- * Temperature range: 0°C - 70°C
- * Contact configuration and serial interface in accordance with ISO standard 7816



ATMEL® AT24C32/64

Description

The AT24C32/64 provides 32,768/65,536 bits of serial electrically erasable and programmable read only memory (EEPROM) organized as 4096/8192 words of 8 bits each.

Features

- * Chip: ATMEL® Corporation (USA)
- * AT24C32 - 4096 x 8 bit (32K Byte) EEPROM organization
AT24C64 - 8192 x 8 bit (64K Byte) EEPROM organization
- * 100 kHz (1.8V) and 400 kHz (100 kHz (1.8V, 2.5V, 2.7V) and 400 kHz (5V) Clock Rate
- * Write Protect Pin for Hardware Data Protection
- * 32-byte Page Write Modes
- * Self-timed Write Cycle (10 ms max)
- * High-reliability
 - Endurance: 1 Million Write Cycles
 - Data Retention: 100 Years
- * Temperature range: 0°C - 70°C
- * Contact configuration and serial interface in accordance with ISO standard 7816



ATMEL® AT24C128/256

Description

The AT24C128/256 provides 131,072/262,144 bits of serial electrically erasable and programmable read only memory (EEPROM) organized as 16,384/32,768 words of 8bits each.

Features

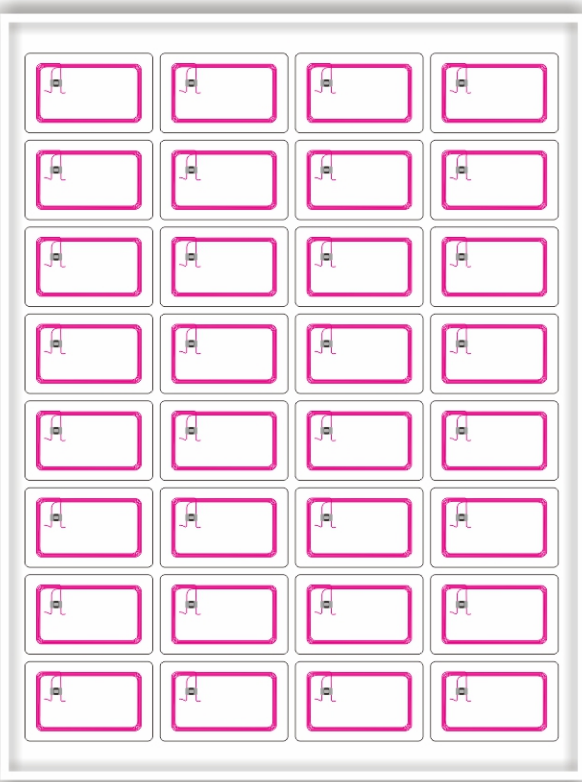
- * Chip: ATMEL® Corporation (USA)
- * AT24C128 - 16,384 x 8 bit (128K Byte) EEPROM organization
AT24C256 - 32,768 x 8 bit (256K Byte) EEPROM organization
- * 1 MHz (5V), 400 kHz (2.7V, 2.5V) and 100 kHz (1.8V) Compatibility
- * Write Protect Pin for Hardware Data Protection
- * 64-byte Page Write Modes
- * Self-timed Write Cycle (5 ms max)
- * High-reliability
 - Endurance: 1 Million Write Cycles
 - Data Retention: 40 Years
- * Temperature range: 0°C - 70°C
- * Contact configuration and serial interface in accordance with ISO standard 7816



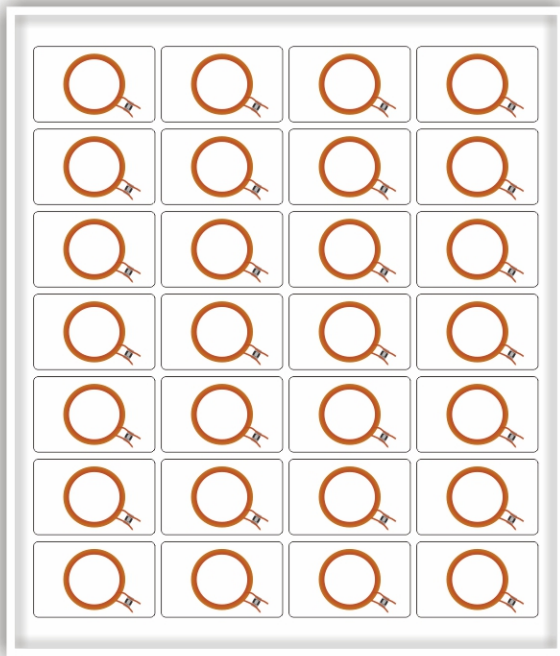
Features:

- 1, Thickness of IC inlay is 0.43~0.50mm, ID inlay is 0.55~0.60mm, sheet size can be customized
- 2, Chip type: contactless IC (Mifare 1K, Mfiare 4K, Mifare Ultralight etc.) and ID chip (TK4100, EM4200/4305, T5577 etc)
- 3, Application: contactless smart card, RFID card, NFC card, proximity card etc.

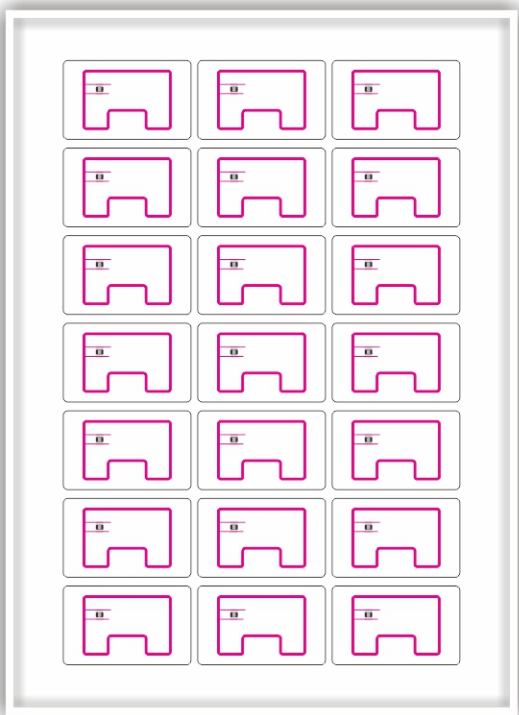
IC Inlay



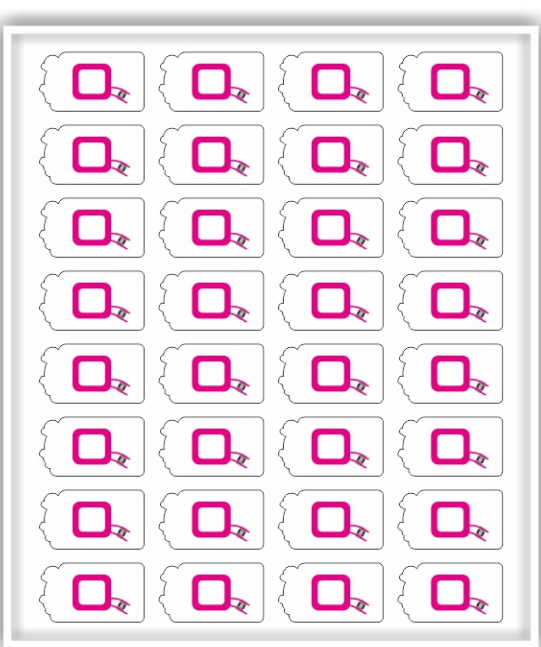
Tk4100 Inlay



IC Inlay



Irregular IC Inlay



USB card



USB Card



Chip: Samsung, hyundai, SanDisk
Memory: 1G, 2G ,4G ,8G ,16G ,32G ,64G
Size: 86x54x2mm,weight 10.5g per pcs,
support USB2.0 USB3.0 Standard.
Material:ABS,digital refurbishing frequency:14mb
Speciality: Environmental protection, waterproof,
dustproof, shockproof, high-speed stability, easy
to carry, ultra-thin
Application:Business Gifts,business card,with
innovative, creative, strong attraction, advertising,
be office necessities, easy to carry.
It can save all the company's related introduction,including
save the document information, video, pictures, music,website,
etc. , not only enhance brand value of the company but also show out the company's corporate image,
it is the Mainly tool for enterprise marketing.



Rfid Wristband



Smart Wristband



Chip type:LF(125KHz),HF(13.56MHz),UHF(915MHz),2.45GHz
Material type:silicone,knit ,plastic,one-off wristband
Size:Standard size or customized
Crafts:logo printing,laser serial number,encode data
Read Distance:10—50mm,2—5m,5—80m
Working Temperature:-40℃--100℃
Application:One-card using, catering consumption, attendance
management, natatorium, washing center, sauna center and
entertainment place, airport parcel, parcel tracking, hospital patient
identification, birth, babies recognition and prison management,
monitoring management, staff position location.



Smart key fob series

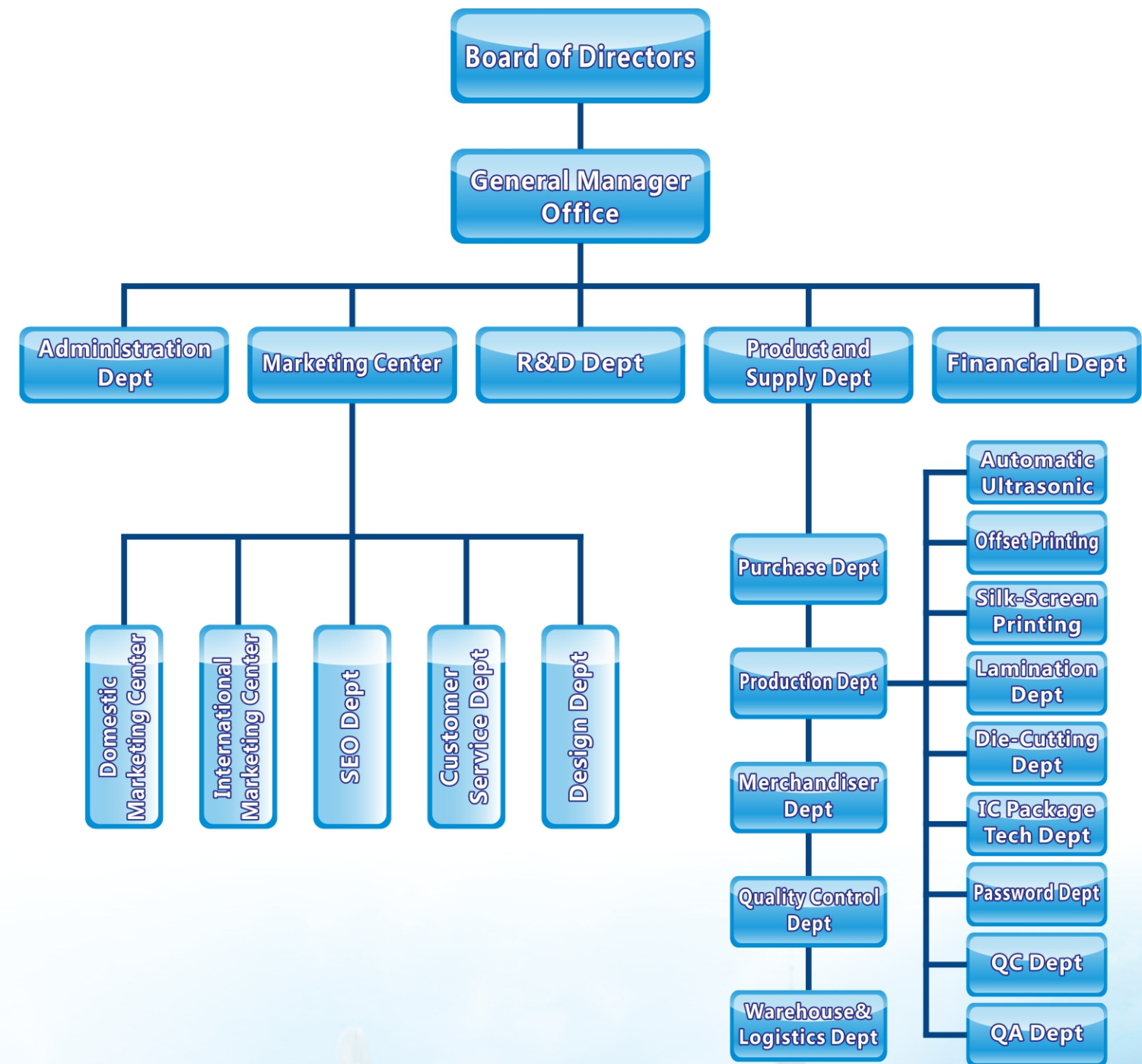


Customized shape card series

★ Above part products are made with universal public mold in the market ,non-dedicated for our company,welcome to OEM.



- Packaging materials: PVC, ABS, PET, PC
- Using Ultrasonic welding crafts,with the features of anti-dust、waterproof、shock-proof
- Key fobs can be made into various different colors.
- Can be full colors printing and with other crafts such as jet-dot number,,laser number according to customers requirements.
- Can be encapsulated different type of HF and LF chips such as IC chip、ID chip
- With portable key ring to carry conveniently,widely use in access control,bus,parking、Identity authentication、attendance management、admission ticket、one-card payment、product identification .



Production Equipment



Duct-free workshop



Heidelberg five-color offset printing machine



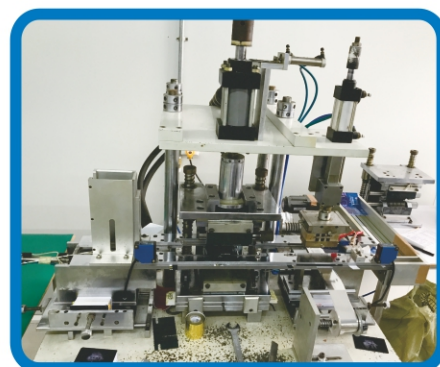
Automatic cutting card machine



Ultrasonic chip winding machine



IC Card Package machine



Automatic convex code machine



Numbering/IC Package workshop



Inlay/Lamination workshop



QC Dept



Production workshops & Equipment