

WEIBONUO Communication

LPDA Yagi Antenna 12dBi 806 – 960MHz

Model: WBN-YG0709V12i43D

Applications

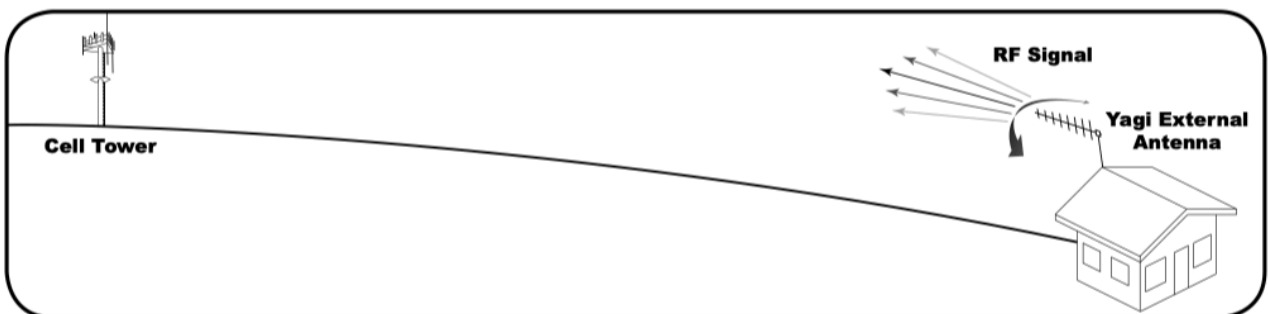
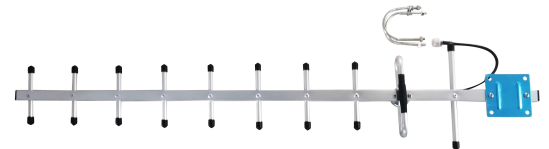
- ❶ CAS (Cellular Amplification System)
- ❷ GSM 900 and 3G-900 cellular applications
- ❸ Directional Antenna (wave channel)
- ❹ Outdoor wireless networks and Cellular networks

Features

- ❶ Frequency coverage for GSM 900 & 3G-900
- ❷ Equipment does not require certification
- ❸ 1 year of warranty period
- ❹ Easy and quick installation

Description

WBN-YG0709V12i43D is a 12dBi GAIN high performance LPDA YAGI antenna specifically designed for outdoor wireless networks which are used to improve GSM 900 and 3G 900 cellular signal reception. Use as part of GSM/3G cellular amplification system for outdoor installation in conditions of poor signal reception. This antenna features a 30cm coax lead terminated with an N-Female connector. Special order connectors are also available.



Adjusting the Antenna for Maximum Performance



Installation Instruction

Electrical Specifications

Frequency Range	806-960MHz
Gain (Typ)	12dBi @ 806-960MHz
Polarization	Vertical
Beamwidth	Horizontal: 43°
	Vertical: 40°
Impedance	50 Ohm
Max. Input Power	50 Watts
VSWR (Typ)	< 1.8

Mechanical Specifications

Cable Length	30 cm – Black RG58 or IMR194 Series
Connector	N-Female OR Customize
Weight	0.65 Kg
Dimensions	550 x 90 x 45 mm
Radome Material	Aluminium
Radome Color	Silvery
Effective Wind Area	≤0.2㎡
Wind-Resistant performance	35m/s
Operating Temperature	-40°C to +55°C