

Weibonuo Communication

9dBi 698 – 960/ 1710–2700MHz Log-Periodical Antenna

Model: WBN400-LOG6927V10i85C

Applications

- ❶ DAS (Distributed Antenna System)
- ❷ Dual band performance covers all LTE bands
- ❸ Directional Antenna (wave channel)
- ❹ Indoor wireless networks and Cellular networks

Features

- ❶ Sealed with Radome, Strong protection ability
- ❷ Supplied with down-tilt bracket for mast mounting
- ❸ Low VSWR & High Gain
- ❹ Available with N-Type or 4.3/10 or 7/16-DIN connectors



Description

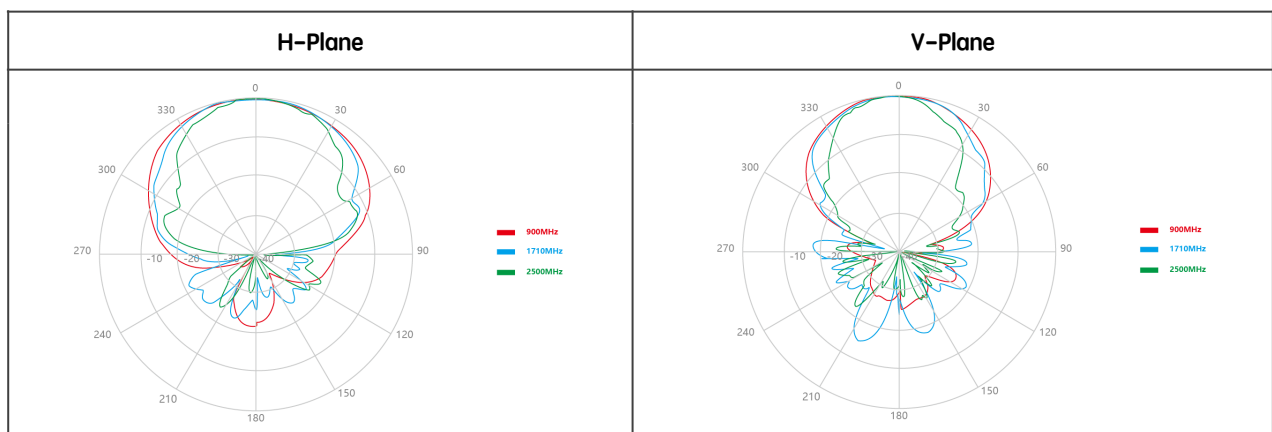
The WBN400-LOG6927V10i85C is a 8-10dBi GAIN high performance LPDA Yagi antenna specifically designed for Distributed Antenna Systems (DAS) applications. They feature high performance along with a multi-band operation. 50 Watt maximum input power with N-Female Connector and Mounting bracket to suit O/D 1.4" to 2" pipe included.

Ordering Information

Part Number	3rd Order IMD Standard	Descriptions
WBN400-LOG6927V10i85C	-140dBc @ 2 x 43dBm (RG141 coaxial cable)	N-Female Connector
WBN400-LOG6927V10i85C/4310		4.3-10 Female Connector
WBN400-LOG6927V10i85C/716D		7/16 DIN Female Connector

* We provide antenna customization on different 3rd order intermodulation (PIM) and connector types, please let us know your requirements

Antenna Patterns



Electrical Specifications

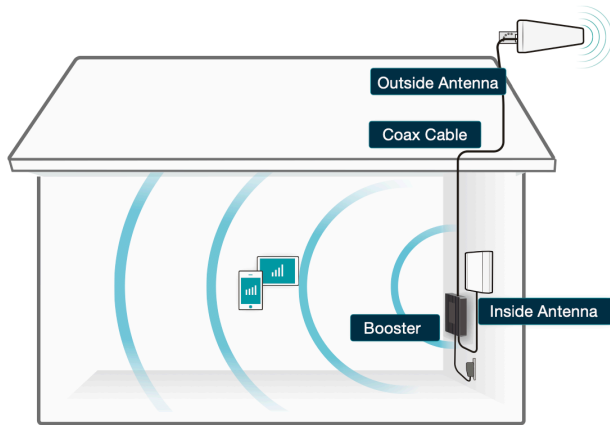
Frequency Range	698–806MHz
	806–960MHz
	1710–2700MHz
Gain (Typ)	7.5±0.5 dBi @ 698–806MHz
	8±0.5dBi @ 806–960MHz
	9.5±1 dBi @ 1710–2700MHz
VSWR (Typ)	≤ 1.8
PIM, 3rd Order, –dBc (Max)	<–140dBc
Polarization	Vertical
Horizontal Beamwidth	85° @ 698–806MHz
	85° @ 806–960MHz
	60° @ 1710–2700MHz
Horizontal Beamwidth	65° @ 698–806MHz
	60° @ 806–960MHz
	50° @ 1710–2700MHz
Impedance	50 Ohm
Max. Input Power	50 Watts

Mechanical Specifications

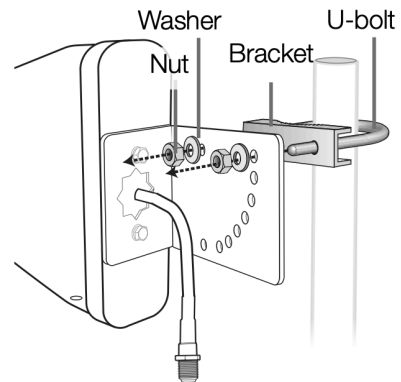
Cable Length	30 cm – Blue OR White RG141 Series
Connector	N-Female OR Customize
Weight	0.496 Kg
Dimensions	400 x 210 x 50 mm
Packing Dimensions	TBD
Radome Material	ABS
Radome Color	White
Effective Wind Area	≤0.2 m²
Wind-Resistant performance	37m/s
Mounting Bracket (Included)	Ø35–Ø50 mm / Ø1.4–Ø2.0 in
Operating Temperature	–40°C to +60°C

* The products and specifications described in this document are subject to change without notice.

LDPA Antenna



In-Building Profiles



Enabling communications,
anywhere, everywhere.

We listen and answer to your needs with our experience and capability in the industry

www.weibonuo.com

Visit our website or contact our representative for more information.



LinkedIn

