

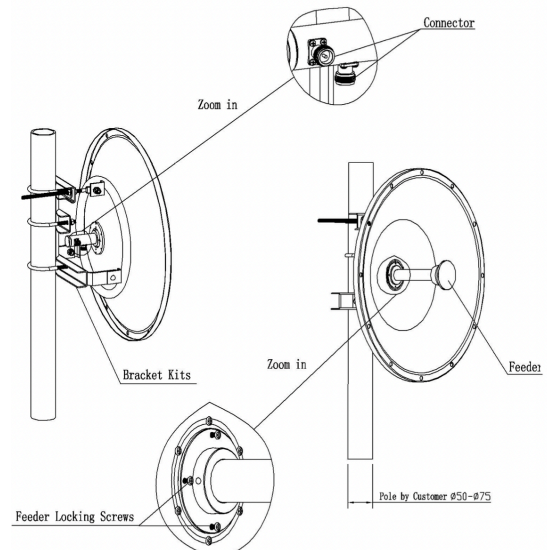
WEIBONUO COMMUNICATION**28.5dBi 5.8GHZ V&H Pol MIMO Dish Antenna****Model: WBNDH-5800VH28L0600****Electrical Specifications**

Frequency Range	5150-5850MHz
Bandwidth	700MHz
Gain	28.5dBi
VSWR	≤ 1.5
Polarization	Vertical and Horizontal
Horizontal Beamwidth	5°
Vertical Beamwidth	5°
F/B Ratio	≥ 35
Isolation	≥ 28
Impedance	50 Ohm
Max. Input Power	100 Watts
Lightning Protection	DC Ground

**Mechanical Specifications**

Connector	N Type
Weight	5.5kg (Bracket Included)
Dimensions	$\phi 0.6m$
Operating Temperature	-40°C to +55°C
Mounting Hardware	$\phi 50 \sim \phi 75mm$

* The products and specifications described in this document are subject to change without notice.

**Installation Methods:**

1. Fixing mounting kits and feeder to parabolic dish, notice the polarization mark.
2. Installing assistant bracket, then install antenna above the assistant bracket, not fixing screws of the mounting kits.
3. To make the received signal maximum by adjusting antenna's azimuth and elevation, then fix screws of the mounting kits and move the assistant bracket to the illustrated place.
4. Antenna is work at V/H dual polarization mode. Antenna's polarization can be adjusted by rotating the feeder. When the connector is vertical, antenna work at vertical polarization mode, otherwise at horizontal polarization mode.