

### WEIBONUO Communication

9dBi Circular 902–928MHz IP65 Integrated RFID Antenna

Model: WBN-iRFID(US)2626

#### Applications

---

- ❶ 902–928MHz (RFID) Radio Frequency Identification
- ❷ 865–868MHz for ETSI is available on requirement
- ❸ Airports, Hospitals, Warehouse, Door Control
- ❹ Personel control, Production Line and etc..

#### Features

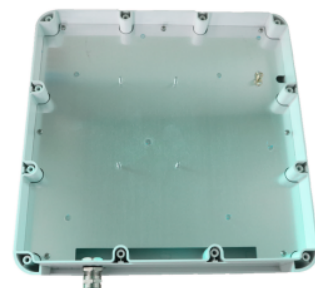
---

- ❶ Low Profile with ASA radome design
- ❷ 1.3 VSWR with less than 2 axial ratio
- ❸ IP65 Rated with ultraviolet–proof
- ❹ Wide range of connector and cable options

#### Descriptions

---

WBN-iRFID(US)2626 integrated antenna provides reception and transmission of signals in the FCC frequency band with ALL IN ONE housing where it enables reader to combine with antenna in one housing. VSWR and axial are excellent and allow the user to achieve the maximum performance for an antenna of this type. The antenna is not only mechanically robust but is less likely to be exposed to excessive damage by virtue of its reduced size.



**Electrical Specifications**

Frequency Range	902-928MHz
Gain (Typ)	9dBi
VSWR (Typ)	≤ 1.3
Axial Ratio	≤2dB
Polarization	Circular
Horizontal Beamwidth	60°
Vertical Beamwidth	60°
Impedance	50 Ohm
Max. Input Power	50 Watts
Lightning Protection	DC Grounded

**Mechanical Specifications**

Cable Length	Direct from bottom
Connector	SMA-male
Weight	1.00 Kg
Dimensions	260 x 260 x 66 mm
Reflector Material	Aluminum
Radome Material	ASA
Radome Color	White
Installation Method	On Pole
Mounting Hardware	Φ 40 – Φ 50mm
Operating Temperature	-40°C to +60°C

\* The products and specifications described in this document are subject to change without notice.

Enabling communications,  
anywhere, everywhere.

We listen and answer to your needs with our experience and capability in the industry

[\*\*www.weibonuo.com\*\*](http://www.weibonuo.com)

Visit our website or contact our representative for more information.

