

Weibonuo Communication

11dBi 698 – 960/ 1710–4000MHz Log-Periodic Antenna

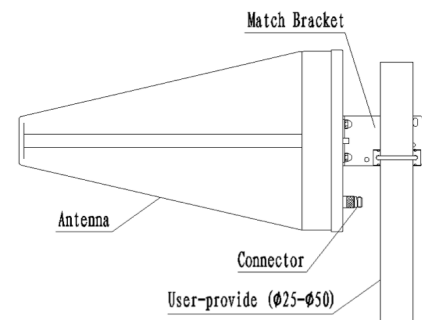
Model: WBN-LOG6940V11i85A

Applications

- ❶ DAS (Distributed Antenna System)
- ❷ Dual band performance covers all LTE bands
- ❸ Directional Antenna (wave channel)
- ❹ Indoor wireless networks and cellular networks

Features

- ❶ Sealed with radome, Strong protection ability
- ❷ Supplied with down-tilt bracket for mast mounting
- ❸ Low VSWR, High Gain and Low profile
- ❹ Available with N-Type or 4.3/10 or 7/16-DIN connectors



Description

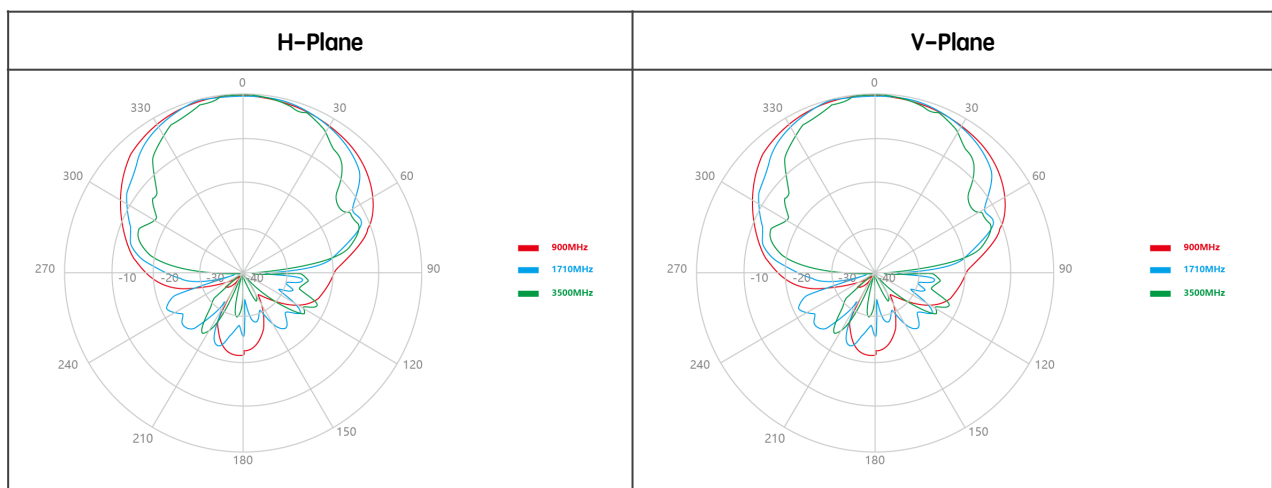
The WBN-LOG6940V11i85A is a 9–10dBi GAIN high performance LPDA YAGI antenna specifically designed for Distributed Antenna Systems (DAS) applications. They feature high performance along with a multi-band operation. 50 Watt maximum input power with N-Female Connector and Mounting bracket to suit O/D Ø25–Ø50 mm pipe included.

Ordering Information

Part Number	3rd Order IMD Standard	Descriptions
WBN-LOG6940V11i85A	-150dBc @ 2 x 43dBm (RG141 coaxial cable)	N-Female Connector
WBN-LOG6940V11i85A/4310		4.3-10 Female Connector
WBN-LOG6940V11i85A/716D		7/16 DIN Female Connector

* We provide antenna customization on different 3rd order intermodulation (PIM) and connector types, please let us know your requirements

Antenna Patterns



Electrical Specifications

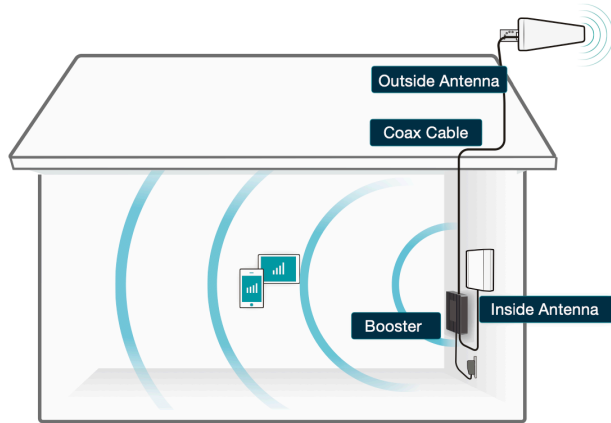
Frequency Range	698–960MHz
	1710–2700MHz
	3400–4000MHz
Gain (Typ)	9±1 dBi @ 698–960MHz
	10±1 dBi @ 1710–2700MHz
	11±1 dBi @ 3400–4000MHz
VSWR (Typ)	≤ 1.8 @ 698–960MHz
	≤ 1.5 @ 1710–4000MHz
PIM, 3rd Order, –dBc (Max)	≤ –150dBc @ 2 x 43dBm
Polarization	Vertical
Horizontal Beamwidth	85±15° @ 698–960MHz / 65±15° @ 1710–4000MHz
Vertical Beamwidth	55±10° @ 698–960MHz / 55±15° @ 1710–4000MHz
Impedance	50 Ohm
Max. Input Power	50 Watts

Mechanical Specifications

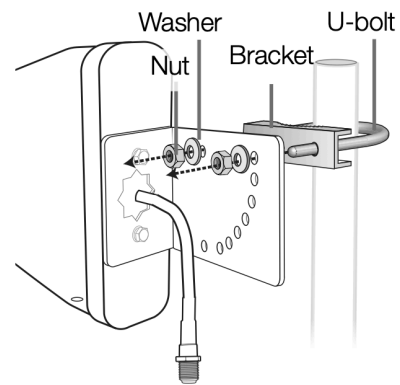
Connector Position	30 cm – RG141 series
Connector	N-Female
Weight	1.0 Kg
Dimensions	440 x 205x 65 mm
Radome Material	ABS
Radome Color	White, RAL9003
Effective Wind Area	≤ 0.2 m²
Wind-Resistant performance	37m/s
Mounting Bracket (Included)	Ø25–Ø50 mm
Operating Temperature	–40°C to +60°C

* The products and specifications described in this document are subject to change without notice.

LDPA Antenna



In-Building Profiles



Enabling communications,
anywhere, everywhere.

We listen and answer to your needs with our experience and capability in the industry

www.weibonuo.com

Visit our website or contact our representative for more information.



LinkedIn

