

WEIBONUO Communication

LPDA Yagi Antenna 13dBi 1710–2170MHz

Model: WBN-YG1721V13i39D

Applications

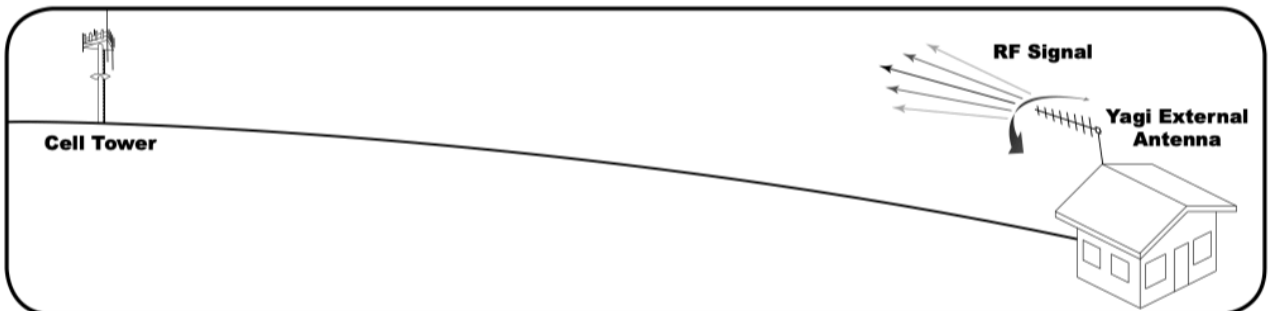
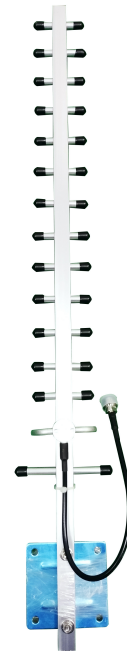
- ❶ CAS (Cellular Amplification System)
- ❷ GSM 900, 3G-900 and 4G-LTE standards
- ❸ Directional Antenna (wave channel)
- ❹ Outdoor wireless networks and Cellular networks

Features

- ❶ Equipment does not require certification
- ❷ 1 year of warranty period
- ❸ Easy and quick installation

Description

WBN-YG1721V13i39D is a 14dBi GAIN high performance LPDA YAGI antenna specifically designed for outdoor wireless networks which are used to improve GSM 900, 3G 900 and 4G-LTE signal reception. Use as part of GSM/3G/4G-LTE cellular amplification system for outdoor installation in conditions of poor signal reception. This antenna features a 30cm coax lead terminated with an N-Female connector. Special order connectors are also available.



Adjusting the Antenna for Maximum Performance



Installation Instruction

Electrical Specifications

Frequency Range	1710–2170MHz
Gain (Typ)	13±1dBi
Polarization	Vertical
Beamwidth	Horizontal: 39°
	Vertical: 36°
Impedance	50 Ohm
Max. Input Power	50 Watts
VSWR (Typ)	< 1.5

Mechanical Specifications

Cable Length	30 cm – Black RG58 or IMR194 Series
Connector	N-Female OR Customize
Weight	0.36 Kg
Dimensions	960 x 180x 60 mm
Radome Material	Aluminium Alloy
Radome Color	Silvery
Effective Wind Area	≤0.2㎡
Wind-Resistant performance	37m/s
Operating Temperature	-40°C to +55°C