

Weibonuo Communication

698 – 960/ 1710–2700MHz Log-Periodic Antenna

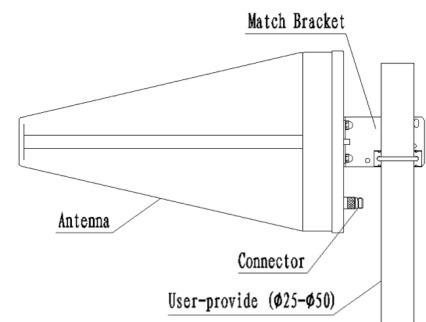
Model: WBND-LOG6927V10i85A

Applications

- ❶ DAS (Distributed Antenna System)
- ❷ Dual band performance covers all LTE bands
- ❸ Directional Antenna (wave channel)
- ❹ Indoor wireless networks and cellular networks

Features

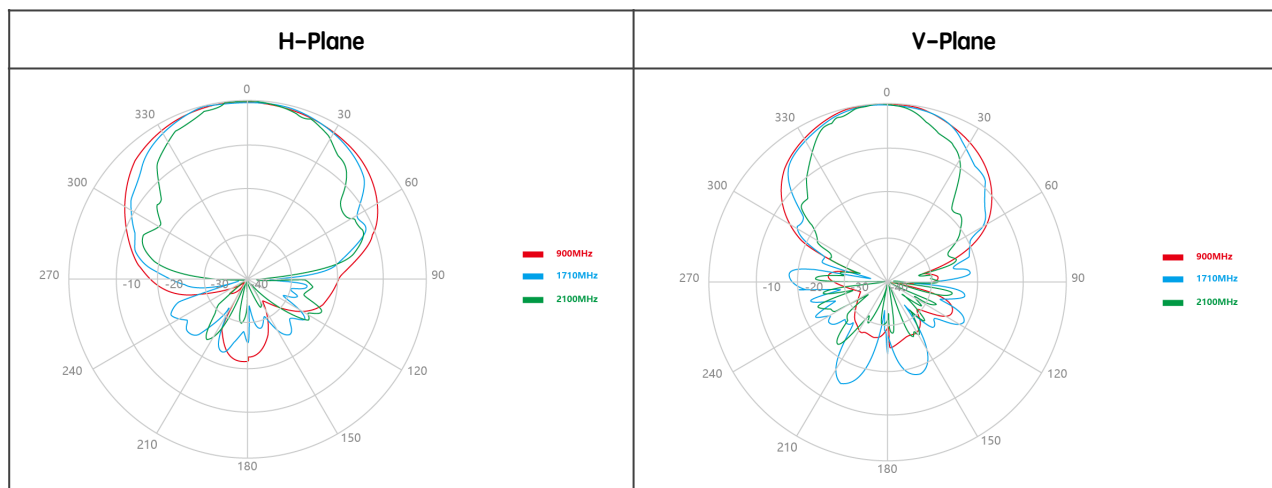
- ❶ Sealed with radome, Strong protection ability
- ❷ Supplied with down-tilt bracket for mast mounting
- ❸ Low VSWR, High Gain and Low profile
- ❹ Available with N-Type or 4.3/10 or 7/16-DIN connectors



Description

The WBND-LOG6927V10i85D is a 9–10dBi GAIN high performance LPDA Yagi antenna specifically designed for Distributed Antenna Systems (DAS) applications. They feature high performance along with a multi-band operation. 200 Watt maximum input power with N-Female Connector and Mounting bracket to suit O/D Ø25–Ø50 mm pipe included.

Antenna Patterns



Electrical Specifications

Frequency Range	698–960MHz
	1710–2700MHz
Gain (Typ)	9 dBi @ 698–960MHz
	10±1 dBi @ 1710–2700MHz
VSWR (Typ)	≤ 1.5 @ 698–960MHz
	≤ 1.5 @ 1710–2700MHz
PIM, 3rd Order, –dBc (Max)	≤ –150dBc @ 2 x 43dBm
Polarization	Vertical
Horizontal Beamwidth	85±15° @ 698–960MHz / 90±10° @ 1710–2700MHz
Vertical Beamwidth	55±10° @ 698–960MHz / 60±10° @ 1710–2700MHz
Impedance	50 Ohm
Max. Input Power	200 Watts

Mechanical Specifications

Connector Position	Direct from bottom
Connector	N-Female
Weight	1.0 Kg
Dimensions	550 x 210x 65 mm
Radome Material	ABS
Radome Color	White
Effective Wind Area	≤ 0.2 m²
Wind-Resistant performance	37m/s
Mounting Bracket (Included)	Ø25–Ø50 mm
Operating Temperature	–40°C to +60°C

Specifications subject to change without notice.