

WEIBONUO Communication Pole installation Design

9dBi Circular 902–928MHz IP67 RFID Panel Antenna

Model: WBN–RFID(US)2626

Applications

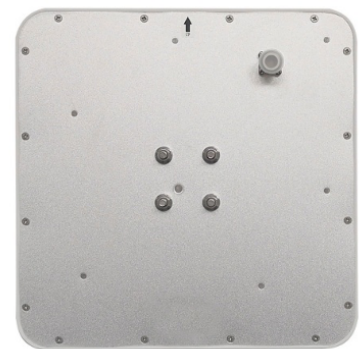
- ❶ 902–928MHz (RFID) Radio Frequency Identification
- ❷ 865–868MHz for ETSI is available on requirement
- ❸ Airports, Hospitals, Warehouse, Door Control
- ❹ Personel control, Production Line and etc..

Features

- ❶ Low Profile with ABS radome design
- ❷ 1.4 VSWR with less than 2 axial ratio
- ❸ IP67 Rated with ultraviolet–proof
- ❹ Wide range of connector and cable options

Descriptions

WBN–RFID(US)2626 antenna provides reception and transmission of signals in the FCC/ETSI frequency band. VSWR and axial are excellent and allow the user to achieve the maximum performance for an antenna of this type. The antenna is not only mechanically robust but is less likely to be exposed to excessive damage by virtue of its reduced size.



Electrical Specifications

| | |
|----------------------|-------------|
| Frequency Range | 902-928MHz |
| Gain (Typ) | 9dBi |
| VSWR (Typ) | ≤1.4 |
| Axial Ratio | ≤2dB |
| Polarization | Circular |
| Horizontal Beamwidth | 70° |
| Vertical Beamwidth | 60° |
| Impedance | 50 Ohm |
| Max. Input Power | 50 Watts |
| Lightning Protection | DC Grounded |

Mechanical Specifications

| | |
|-----------------------|------------------------------|
| Cable Length | Connector Direct From Bottom |
| Connector | N-Female |
| Weight | 1.68 Kg |
| Dimensions | 260 x 260 x 30 mm |
| Mounting Hardware | Φ 30 – Φ 50mm |
| Radome Material | ABS |
| Radome Color | White |
| Installation Method | On Pole |
| Operating Temperature | -20°C to +60°C |

* The products and specifications described in this document are subject to change without notice.