



Xingang House



ROOM 3110, NO. 2, DANAN ROAD,  
YUEXIU DISTRICT, GUANGZHOU



[HTTPS://WWW.STEELMARKHOUSE.COM/](https://www.steelmarkhouse.com/)

**BUILD THE HOUSE  
OF YOUR DREAMS**

**BUILD THE HOUSE  
OF YOUR DREAMS**

GUANGZHOU XINGANG STEEL STRUCTURE HOUSING CO., LTD, SPECIALIZING IN THE PRODUCTION AND CONSTRUCTION OF LIGHT STEEL STANDARD HOUSES, THE PRODUCTS COVER VILLAS, GOOD STEEL STRUCTURES, PREFAB HOUSES, AND COMMERCIAL BUILDINGS.

**LIGHT STEEL HOUSE**

# ABOUT US



## GUANGZHOU XINGANG STEEL STRUCTURE HOUSING CO., LTD

Guangzhou Xingang Steel Structure Housing Co., Ltd. is a professional steel structure company located in Guangzhou City, Guangdong Province. We have trading branches in Australia and Foshan, China. For ten years, we have provided OEM services for many international brands in the field of residential construction. Today, Xingang has the most complete light steel housing product line and container product line, including light steel villas, light steel commercial buildings, light steel gas stations, kiosk containers, residential villa containers, container offices, and container restaurants. Xingang factory covers an area of 15,600 square meters. Products are exported all over the world.

All operating procedures of Xingang Company have obtained ISO certification. Every product is quality checked before delivery. The assembly department will ensure that the structure and appearance are intact. Packaging departments need to ensure that products are not damaged in transit.

Over the past ten years, we have grown to complete thousands of projects and have established numerous high profile cases in Australia, USA, Philippines, Israel, Nigeria and Japan. The annual production capacity reaches 50 million yuan, the technology is mature, and the price is competitive. The success of these projects has given us strong engineering capabilities and confidence in our well-served clients.

# CONTENT

1. ENTERPRISE HONOR.....P01-P02
2. BUSINESS MODEL.....P03
3. SCOPE OF SERVICE.....P04
4. BASIC COMPOSITION.....P05
5. PRODUCT ADVANTAGES.....P06
6. ABOUT THE PRODUCT.....P07-P10
7. BUSINESS PROCESS.....P11
8. PRODUCTION EQUIPMENT.....P12
9. ENGINEERING EXAMPLES.....P13-P22

# ENTERPRISE HONOR



# ENTERPRISE HONOR



**GOLD TUV CERTIFICATION**



**GOLD TUV CERTIFICATION**



**PATENT CERTIFICATE**

## CERTIFICATE QUALIFICATION



**ISO9001**



**STEEL STRUCTURE CE CERTIFICATE**



**SAFETY PRODUCTION STANDARDIZATION CERTIFICATE**



**PATENT CERTIFICATE**



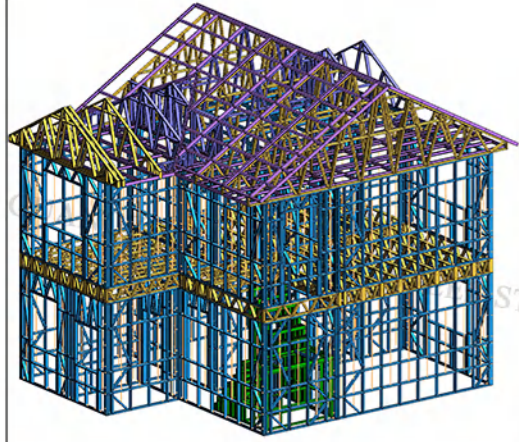
**PATENT CERTIFICATE**



**PATENT CERTIFICATE**

# BUSINESS MODEL

Xingang follows the development needs of the market and adopts a new business model that integrates the design, construction and marketing of light steel houses, providing a platform for customers and designers to communicate. Compared with the traditional business model, it is more conducive to building customers. desired building product. Xingang pays attention to details, strives for perfection, ensures the quality of each link, and creates high-end construction products wholeheartedly.



## 1. DESIGN

Xingang has the best design team, focusing on the design of the whole building, including planning, scheme, building structure, interior decoration. The design emphasizes the application of space, the direct relationship between space and environment, and firmly combines the structure, architecture and environment to create a building with a superior overall environment and a reasonable distribution of functions.



## 2. BUILD

The construction process includes two parts: factory prefabrication and on-site installation. Factory prefabrication will be directly installed in the factory, and then shipped as a whole. On-site installation will be accompanied by product installation instructions, and an installation consultant will provide online answers.



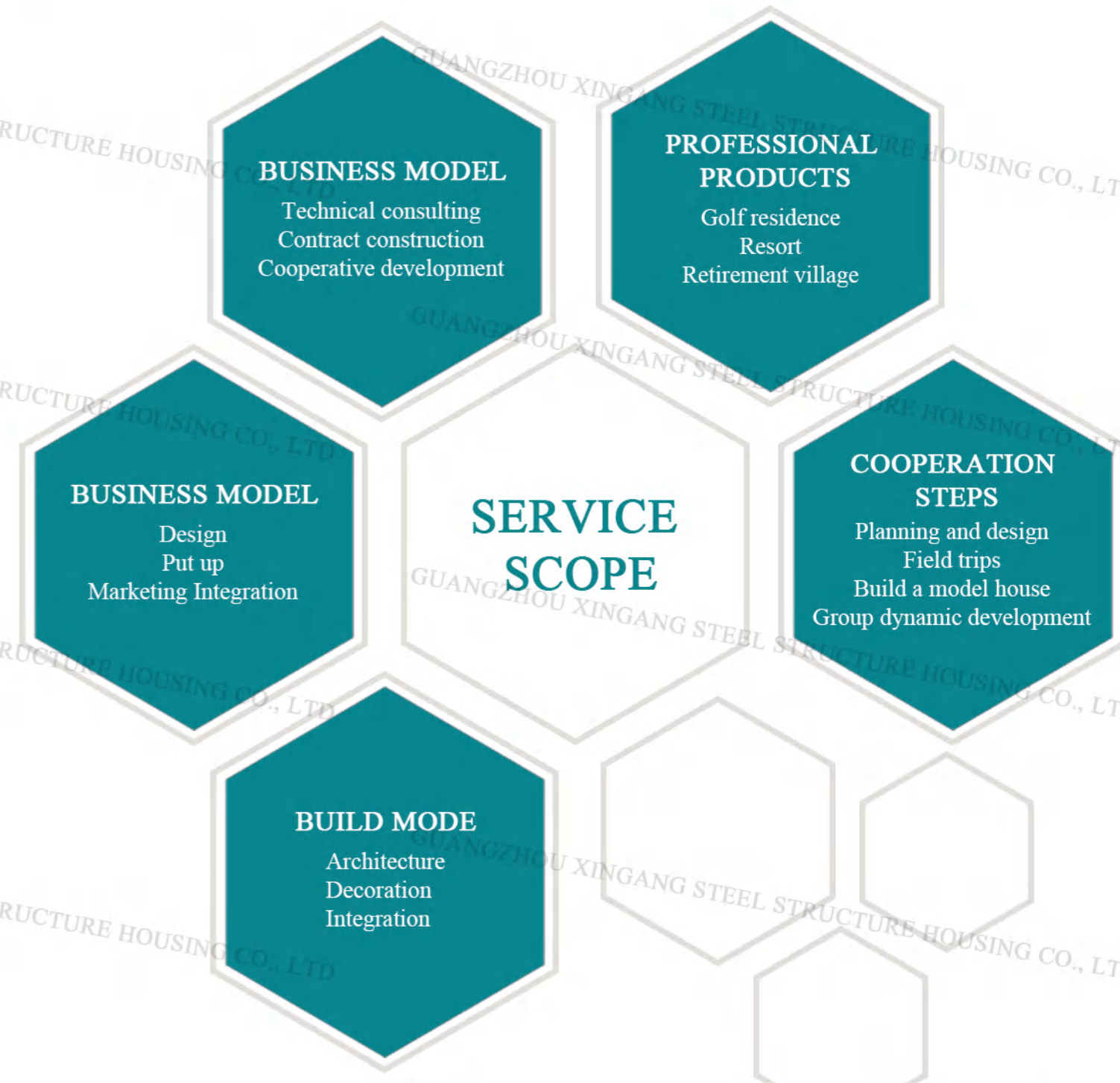
## 3. MARKETING

Xingang always takes the market demand as the first point, from project conception, design, manufacture, construction to installation, and makes every effort to provide customers with the most scientific, reasonable and effective solutions.

# SCOPE OF SERVICE

## OUR SERVICE

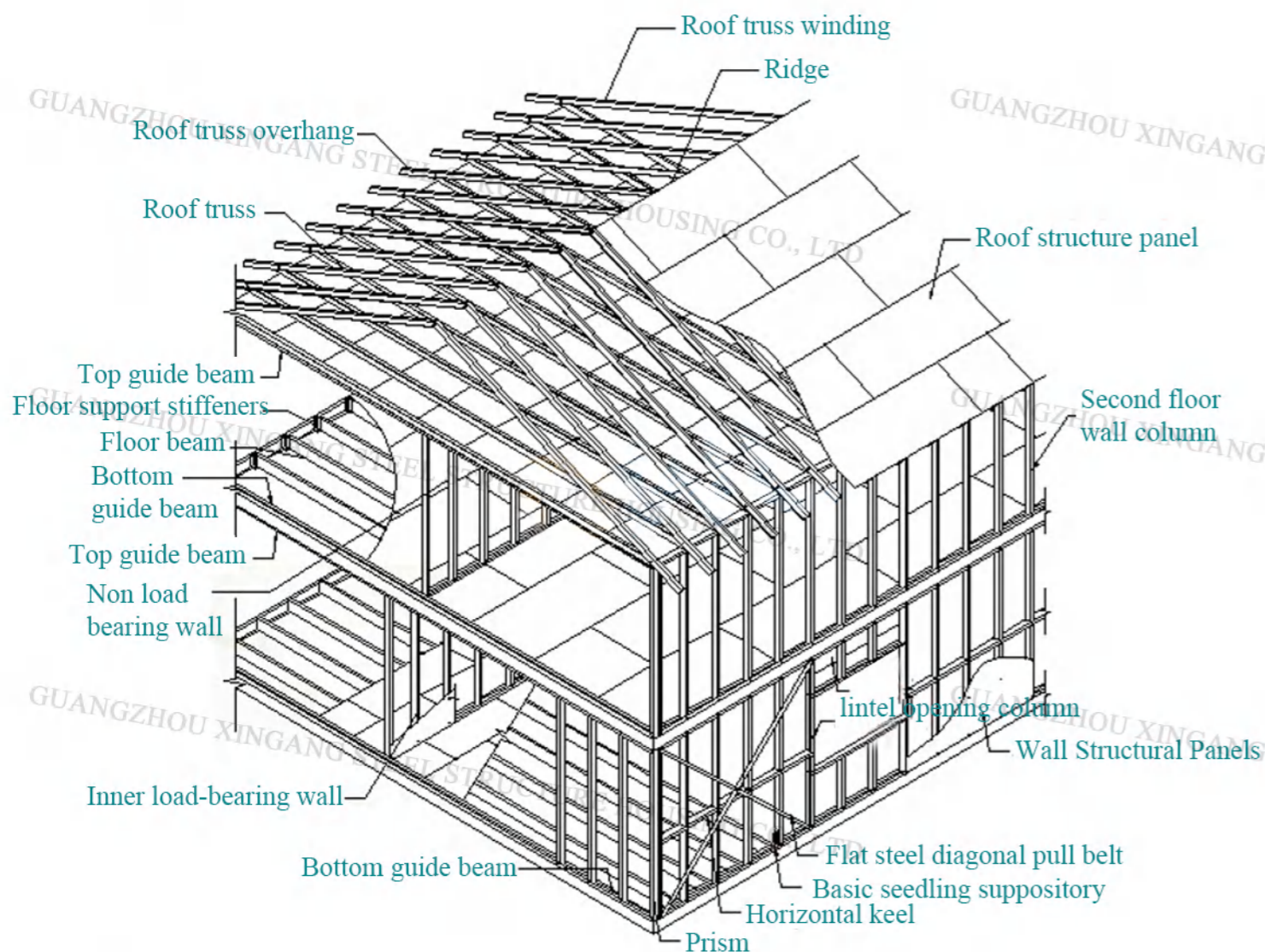
Service tenet:  
what Xingang builds is not only a building,  
but also an attitude and an expectation for a better life



# BASIC COMPOSITION

## THE BASIC COMPONENTS OF THE RESIDENTIAL SYSTEM

It has the characteristics of light weight, large span, good wind and earthquake resistance, thermal insulation, sound insulation and other characteristics. Suitable for villas, multi-storey residences, resorts, clubs, etc. At the same time, engineers can provide customers with a variety of standard classic villa designs, provide customers with optimal design solutions, and efficiently meet customers' individual needs.



# PRODUCT ADVANTAGES

## 1. HIGH FLEXIBILITY

The light steel structure house provides a larger shared space, improves the degree of freedom of function distribution, and can be flexibly partitioned according to the needs, so that the indoor layout is diversified; the light steel structure system can adapt to any geological environment and is not affected by the geological environment. It can be built on various complex grounds such as mountains, forests, and permafrost as needed.

## 2. LOW COST

The light weight of the light steel structure system is only 1/4 of that of the concrete structure, which can greatly reduce the initial cost of the construction.

## 3. FASTER

The construction period of the light steel structure house is short, about 1/3 of the traditional structure.

## 4. SAFER

The excellent physical and mechanical properties of light steel materials make the villa have the characteristics of high overall rigidity, high component strength, and light structural weight, and its performance in earthquakes, hurricanes and other natural disasters is far superior to other structural forms.

## 5. MORE DURABLE

The light steel structure house adopts galvanized steel plate with strong corrosion resistance and reasonable fireproof structure measures to ensure the durability of the structure.

## 6. BE MORE AT EASE

The light steel structure house eliminates structural creep, flooding, and pests such as termites and mice, making living more secure and more comfortable.

## 7. MORE COMFORTABLE

The high-efficiency energy-saving wall used in the light steel structure house has a breathing function, can adjust the indoor humidity, and has excellent sound insulation performance.

## 8. MORE ENERGY EFFICIENT

The wall and roof structure of the light steel structure house fully considers the effect of heat insulation and moisture resistance, which is warm in winter and cool in summer, which can save a lot of energy.

## 9. GREENER

The light steel structure house is an ecological building, using green and environmentally friendly light steel as the building material, the construction site has a high degree of civilized operation, and the construction pollution to the environment is small. The steel structure of the house is 100% recyclable, and most of the other supporting materials can also be recycled.

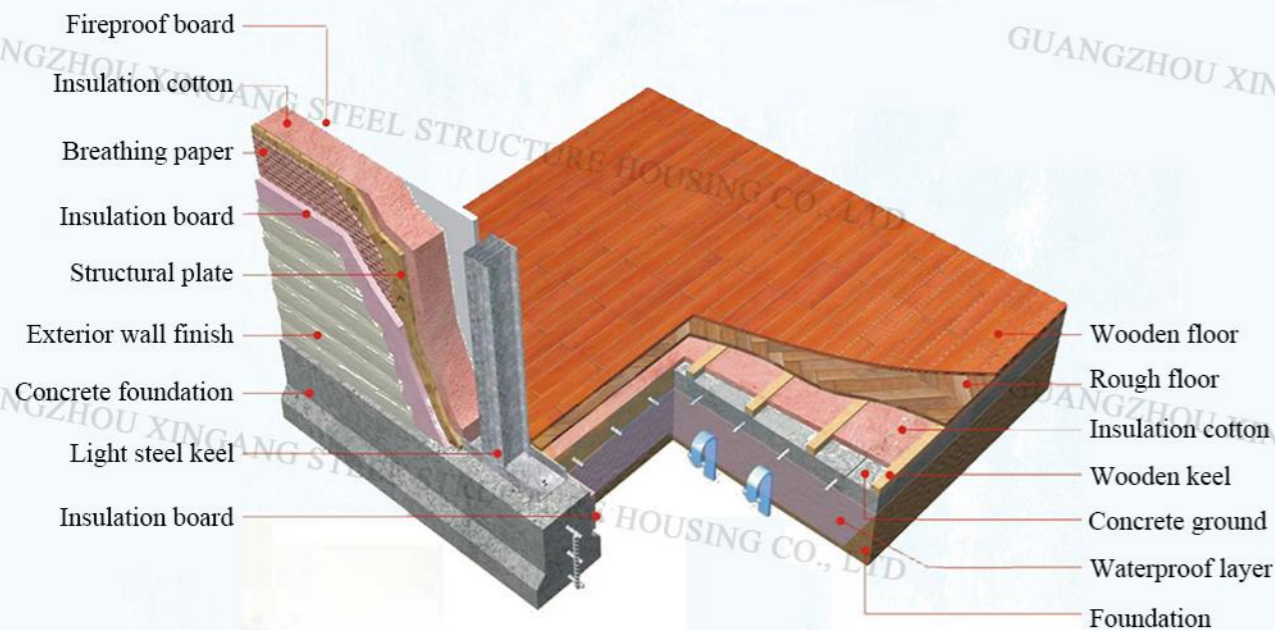
ROOF SYSTEM

FLOOR SYSTEM

WALL SYSTEM

# ABOUT THE PRODUCT

## ▶ LIGHT STEEL SYSTEM: GROUND SYSTEM



- a. Light steel structure has light weight, which can greatly reduce the cost of basic engineering;
- b. The basic moisture-proof design can effectively prevent the intrusion of moisture and harmful gases;
- c. Reasonable anchoring method to ensure reliable connection between the foundation and the main body.

## ▶ LIGHT STEEL SYSTEM: WALL SYSTEM

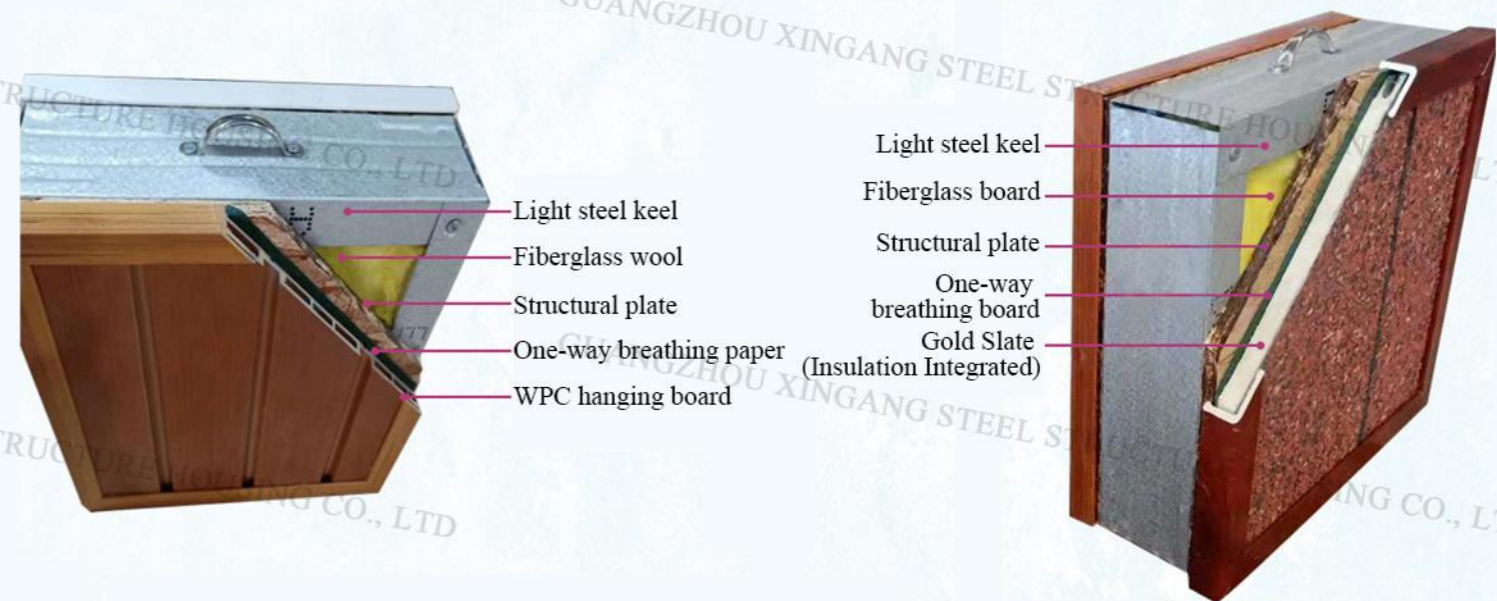


THE OVERALL STRUCTURE OF THE INNER AND OUTER WALLS

EXTERIOR WALL PRACTICE 1 (CEMENT FIBERBOARD)

# ABOUT THE PRODUCT

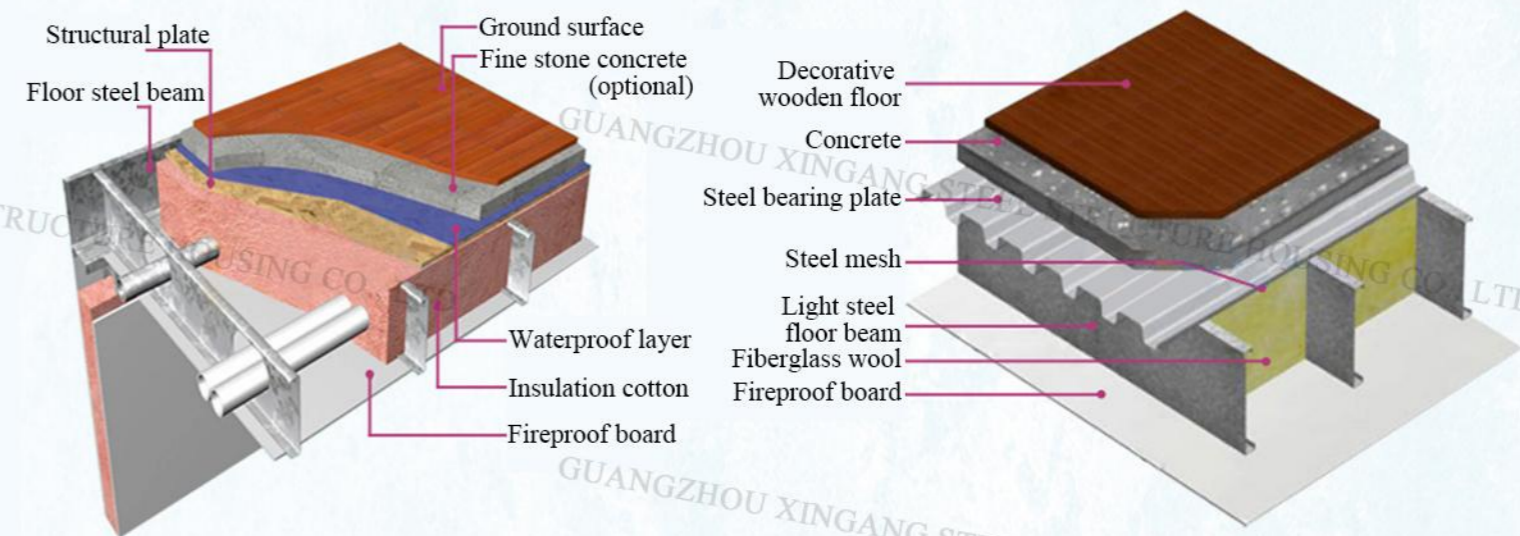
## ▶ LIGHT STEEL SYSTEM: WALL SYSTEM



EXTERIOR WALL PRACTICE 2 (WPC HANGING BOARD)

EXTERNAL WALL PRACTICE 3 (GOLD SLATE)

## ▶ LIGHT STEEL STRUCTURE: FLOOR SYSTEM

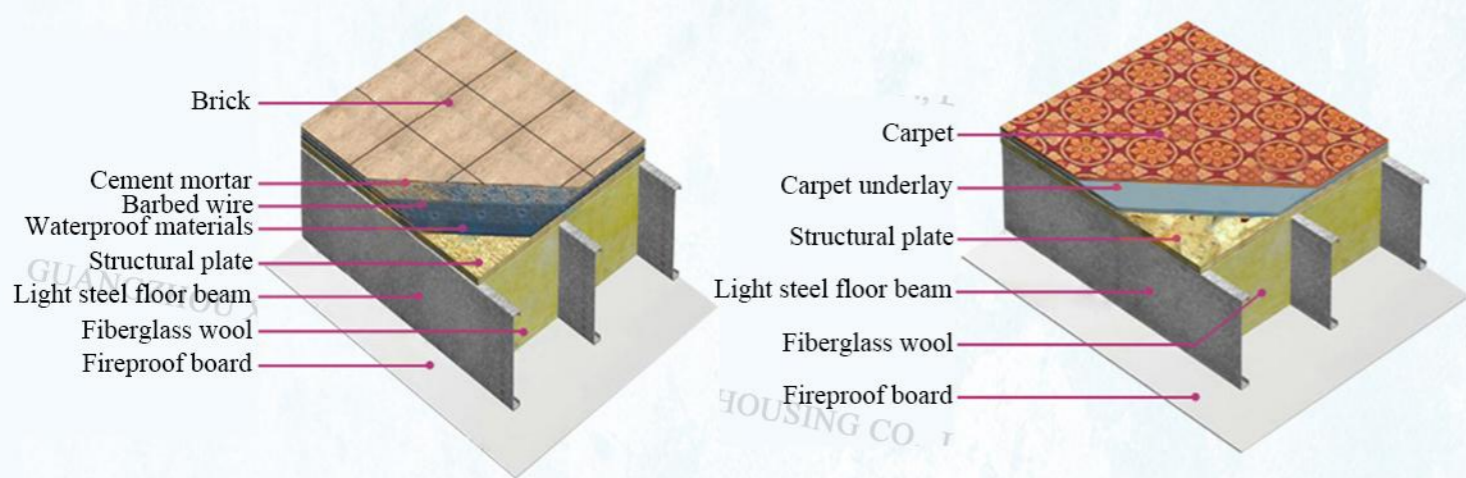


OVERALL FLOOR SYSTEM

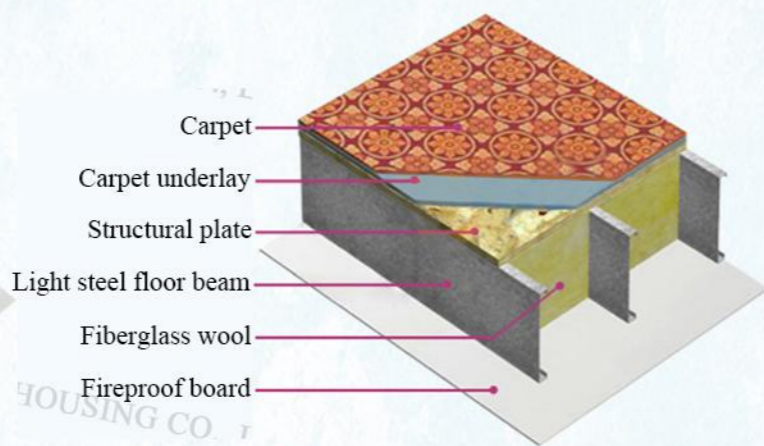
FLOOR PRACTICE 1

# ABOUT THE PRODUCT

## ▶ LIGHT STEEL SYSTEM: FLOOR SYSTEM



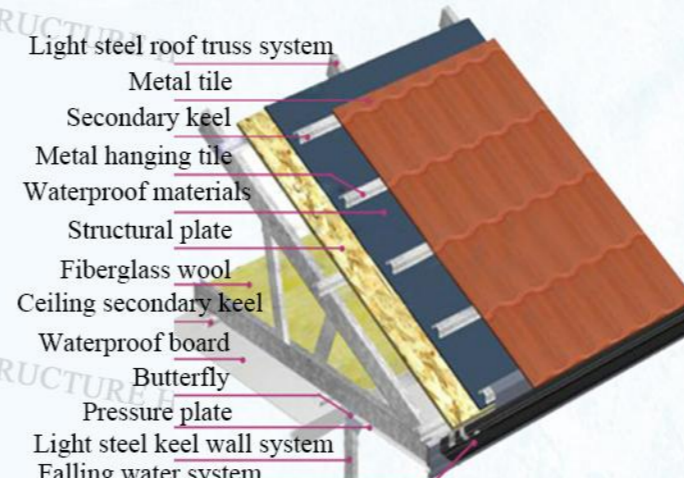
FLOOR PRACTICE 2



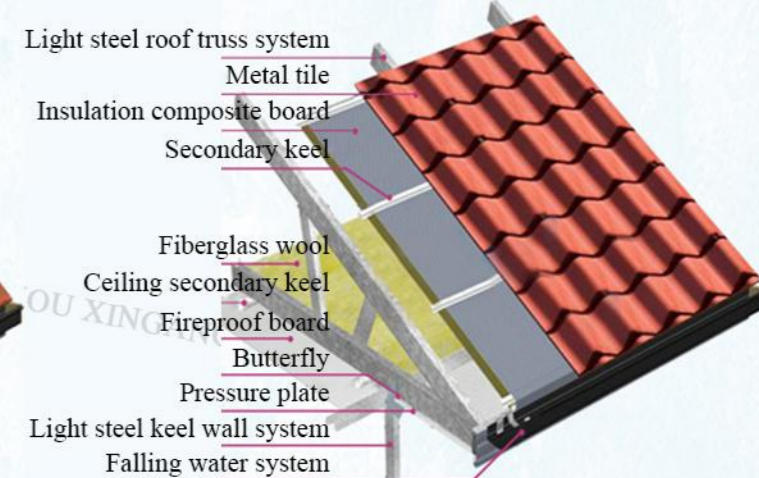
FLOOR PRACTICE 3

# ABOUT THE PRODUCT

## ▶ LIGHT STEEL SYSTEM: ROOFING SYSTEM

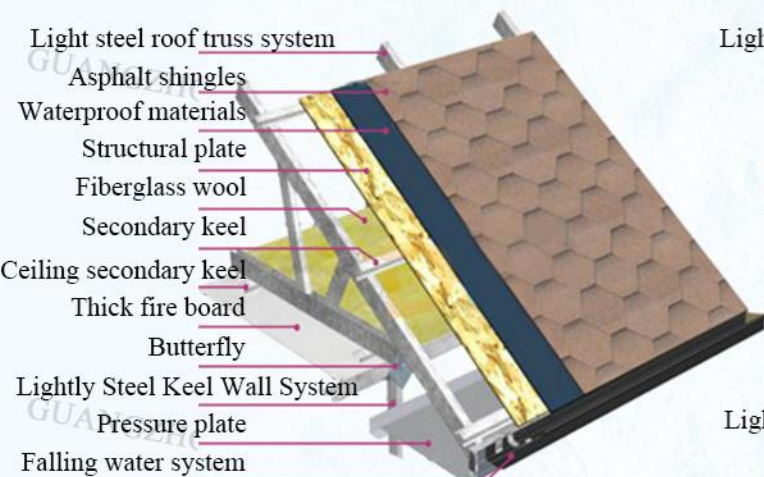


ROOFING PRACTICE 3  
(METAL TILE)

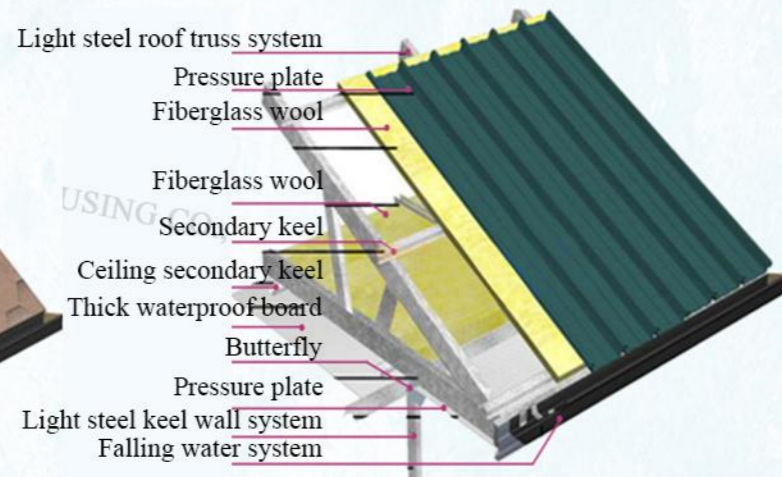


ROOFING PRACTICE 4  
(COLORED STONE TILES)

## ▶ LIGHT STEEL SYSTEM: ROOFING SYSTEM



ROOFING PRACTICE 1  
(ASPHALT SHINGLES)



ROOFING PRACTICE 2  
(PRESSED PLATE)

# BUSINESS PROCESS

# PRODUCTION EQUIPMENT



01

## CONTACT

Contact us by phone / email / Facebook / Iiken

## DRAWINGS AND QUOTATIONS CONFIRM THE CONTRACT

- ▶ Tell us what you want, our sales staff and designers will provide you with suitable suggestions.
- ▶ Confirm the details of price, payment, shipping time, and sign the contract.

02



## PRODUCE QUALITY INSPECTION

- ▶ Start production after receiving the advance payment, sales follow up the production progress.
- ▶ The quality control team will inspect in each process and provide an inspection report.

03



## PACKING AND SHIPPING

All parts are packed on a steel frame and placed in a shipping container; contact the freight forwarder and transport them to the final location according to customer requirements.

04



05

## INSTALLATION

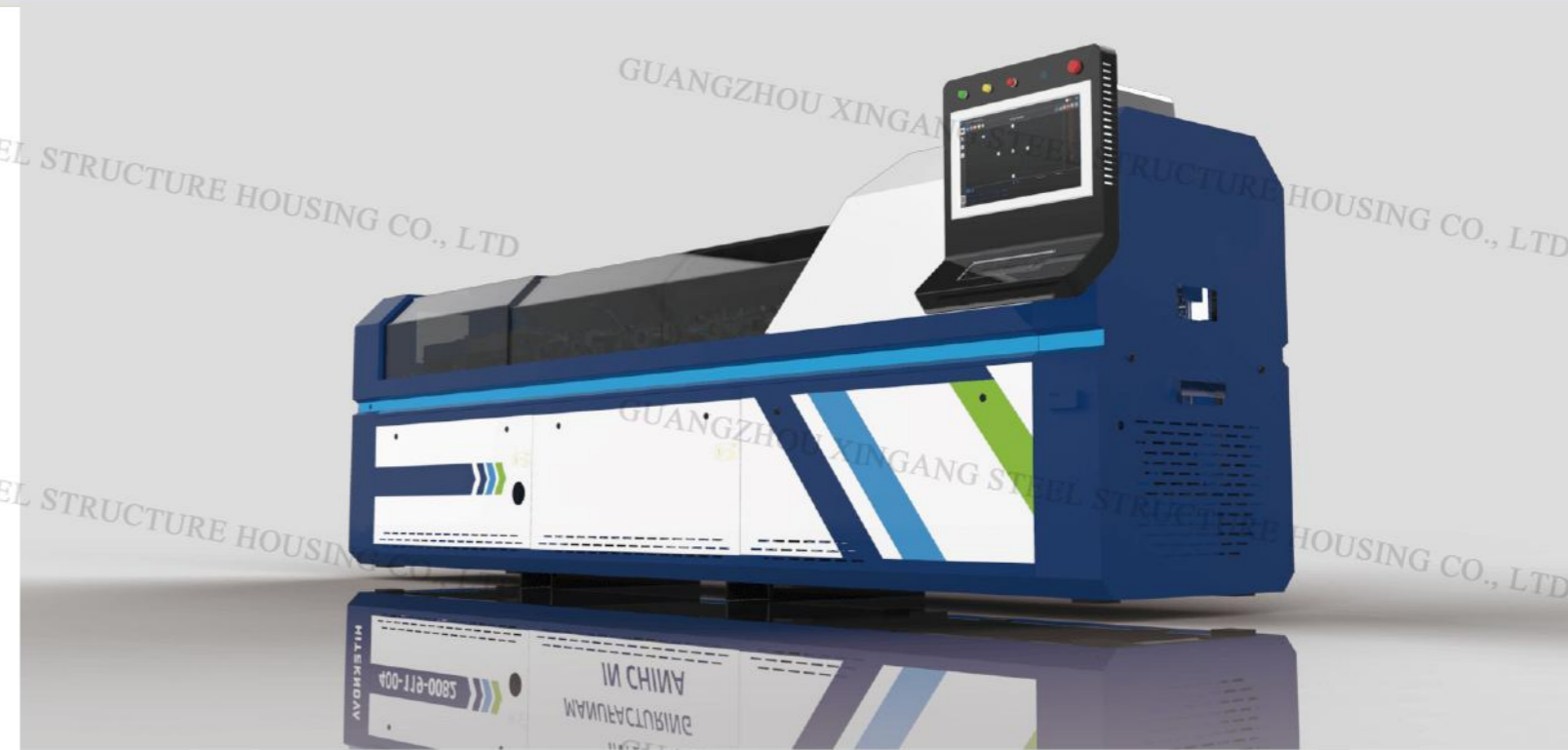
We will provide a complete installation drawing, if necessary, follow the video, or the crew engineer will go to the site for installation instructions.



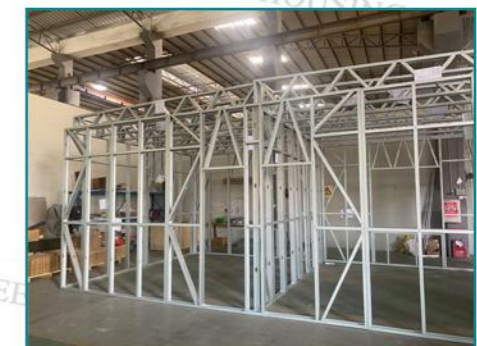
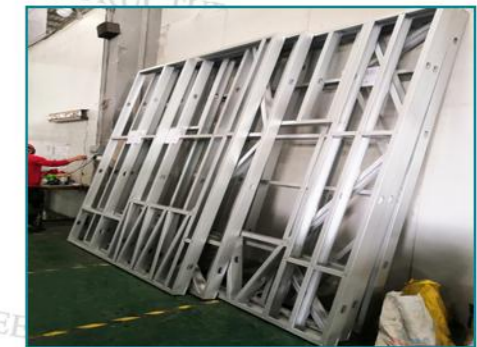
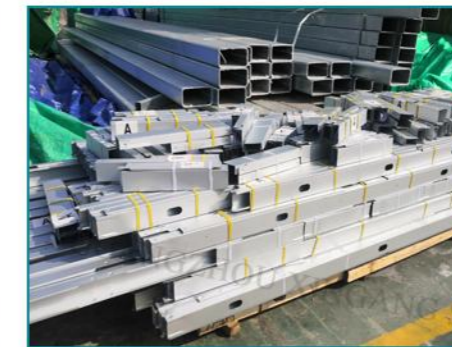
06

## AFTER-SALES SERVICE

At any time, if there is any problem with the product, our sales staff and designers will do our best to help you solve the problem.



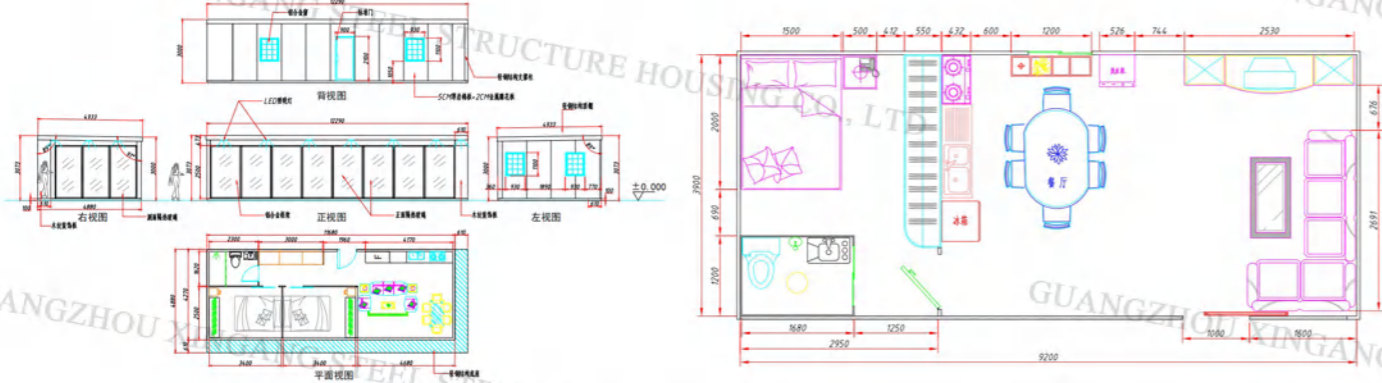
## LIGHT STEEL KEEL PRODUCTION LINE





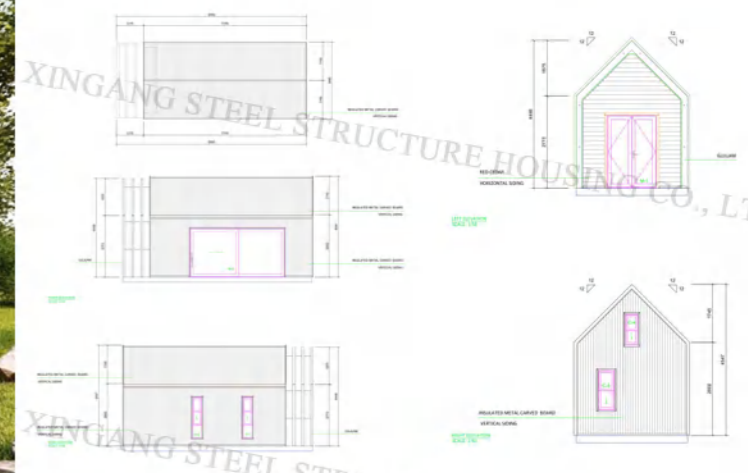
# ENGINEERING EXAMPLES

AMERICAN LIGHT STEEL VILLA-----~57m<sup>2</sup>

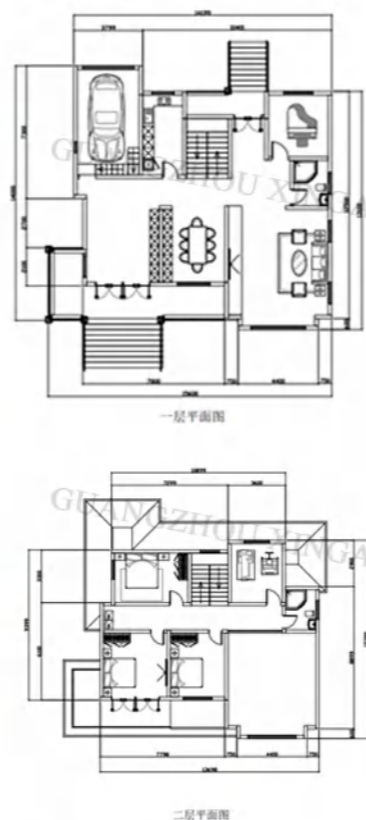


# ENGINEERING EXAMPLES

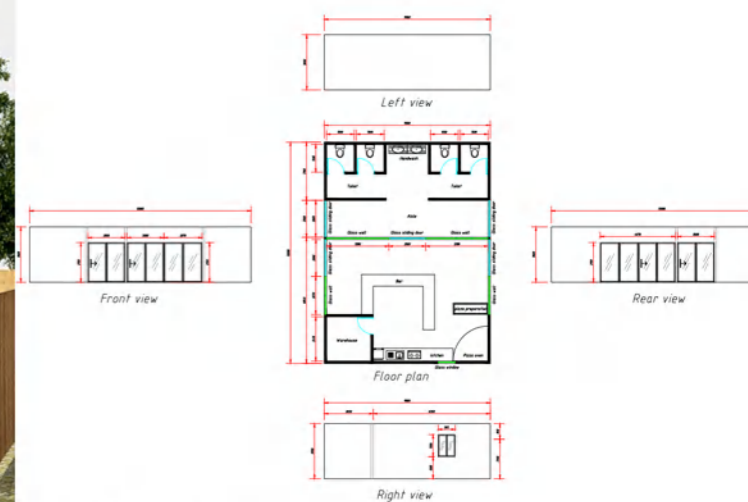
TRIANGULAR ROOF LIGHT STEEL HOUSE-----~30m<sup>2</sup>



DOUBLE-STOREY LIGHT STEEL VILLA-----~370m<sup>2</sup>

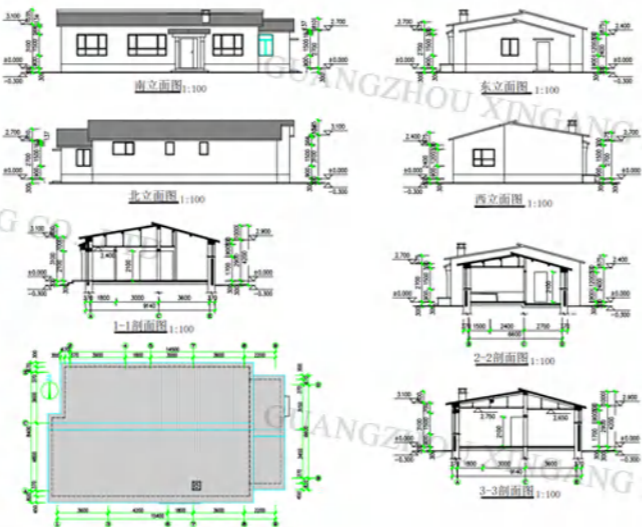


LIGHT STEEL HOUSE-----~108m<sup>2</sup>



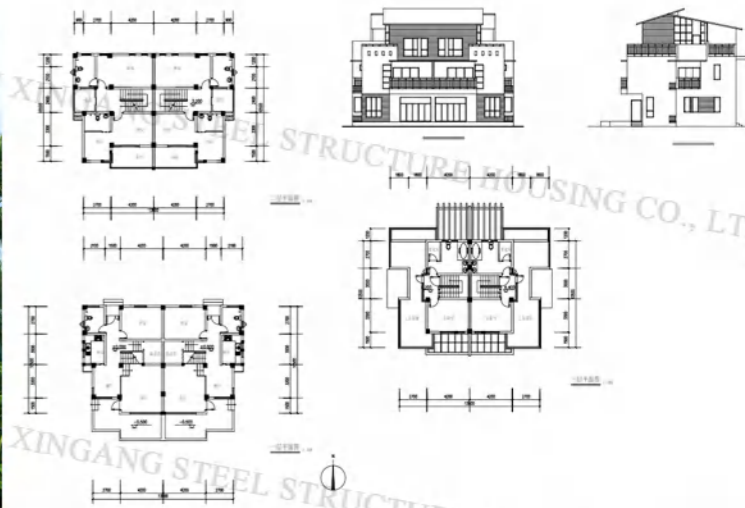
# ENGINEERING EXAMPLES

LIGHT STEEL HOUSE----- $\approx 125\text{m}^2$

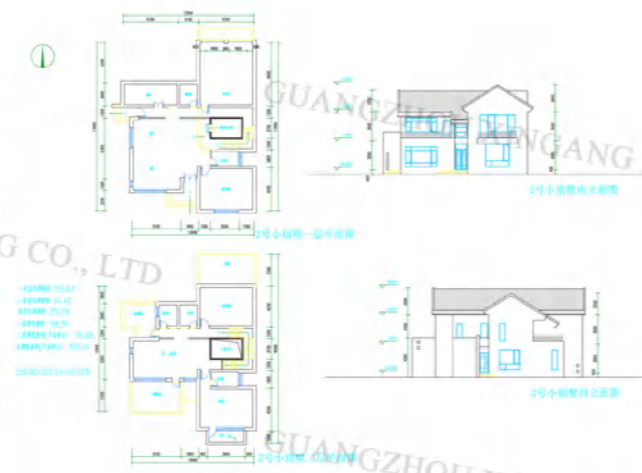


# ENGINEERING EXAMPLES

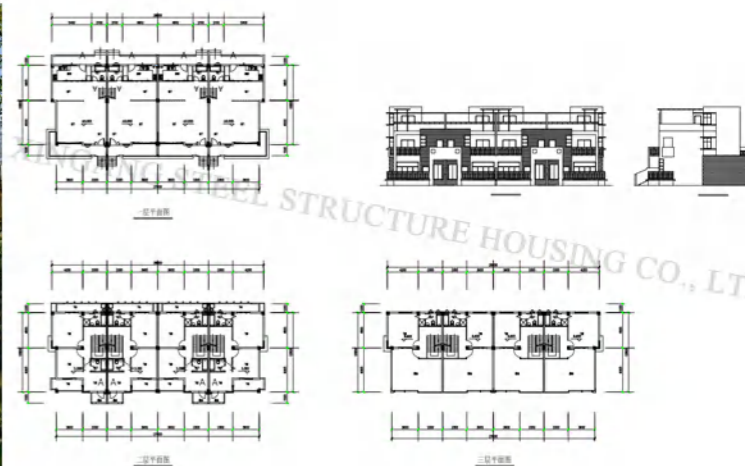
DOUBLE VILLA----- $\approx 435\text{m}^2$



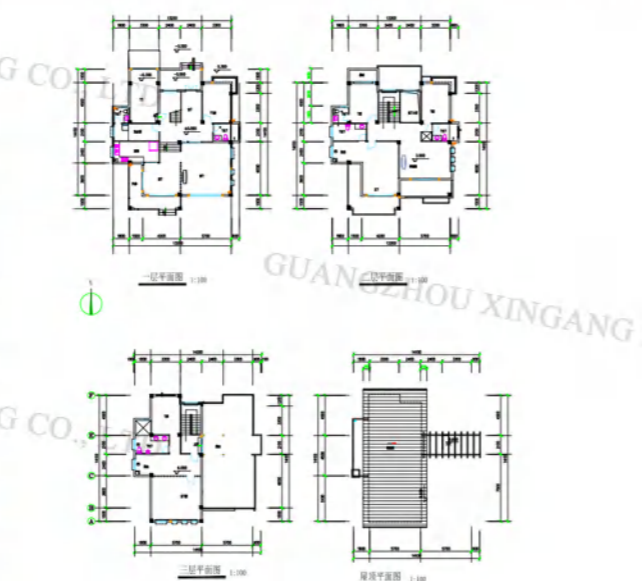
TWO STOREY VILLA----- $\approx 486.5\text{m}^2$



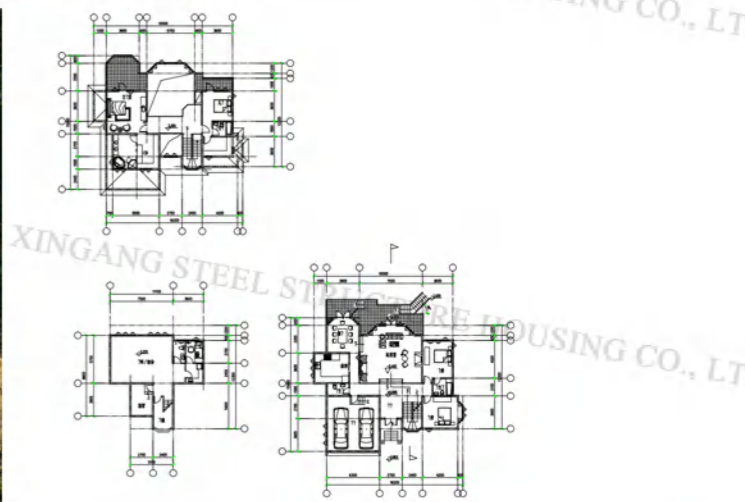
TOWNHOUSE----- $\approx 895\text{m}^2$



DETACHED VILLA----- $\approx 558\text{m}^2$

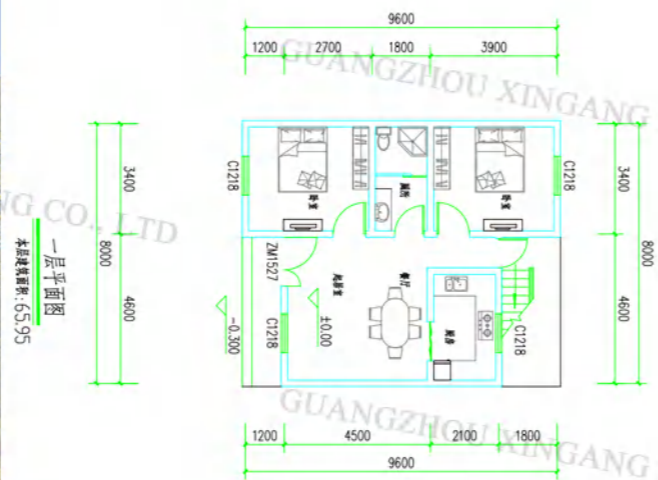


DETACHED VILLA----- $\approx 397\text{m}^2$



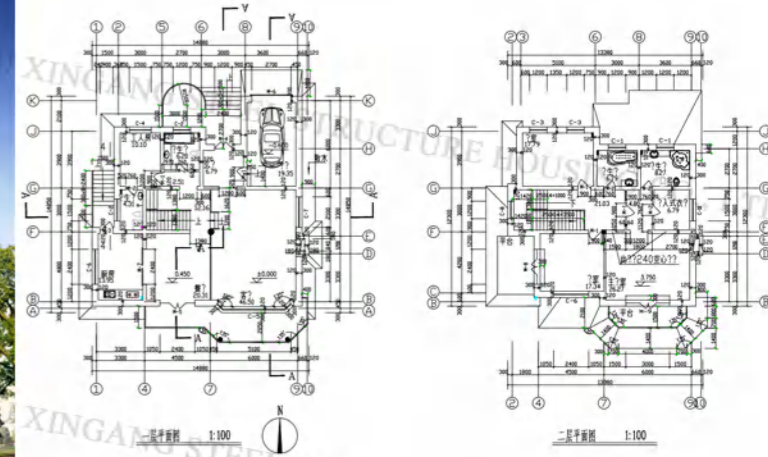
# ENGINEERING EXAMPLES

▶ LIGHT STEEL RESIDENTIAL HOUSE----- $\approx 65.95\text{m}^2$



# ENGINEERING EXAMPLES

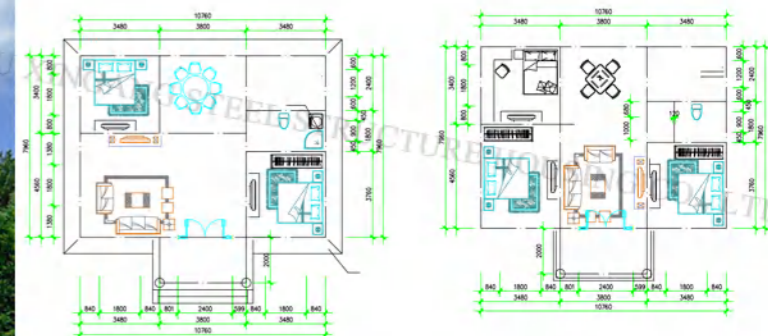
▶ DETACHED VILLA----- $\approx 442\text{m}^2$



▶ DETACHED VILLA----- $\approx 564\text{m}^2$



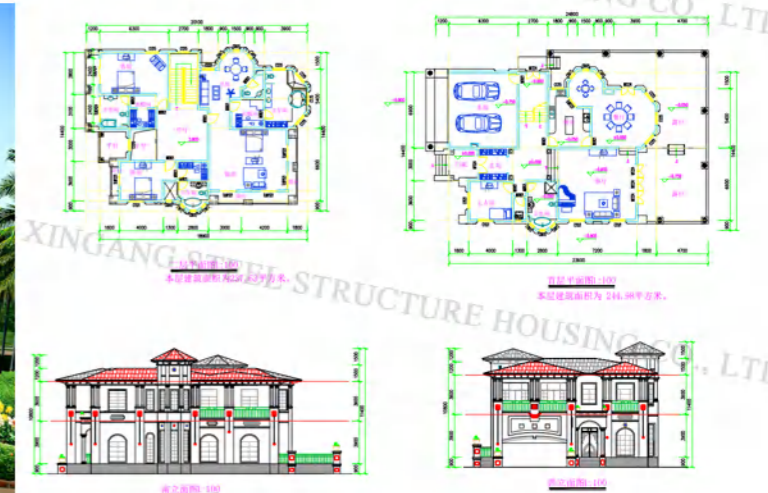
▶ DETACHED VILLA----- $\approx 171\text{m}^2$



▶ DETACHED VILLA----- $\approx 482\text{m}^2$

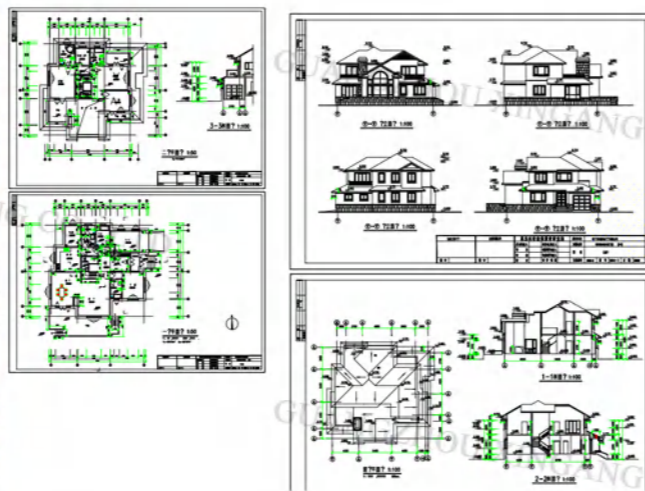


▶ DETACHED VILLA----- $\approx 482\text{m}^2$



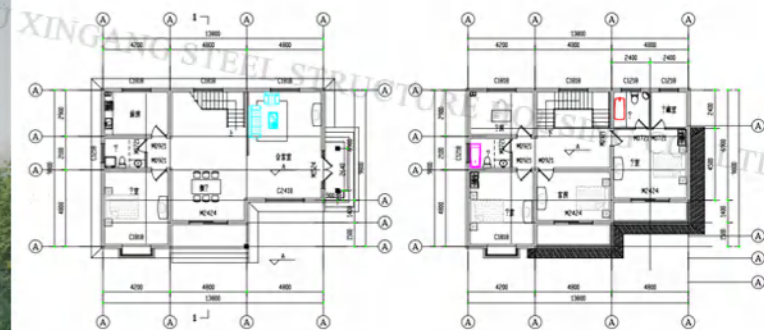
# ENGINEERING EXAMPLES

▶ DETACHED VILLA-----≈459m<sup>2</sup>

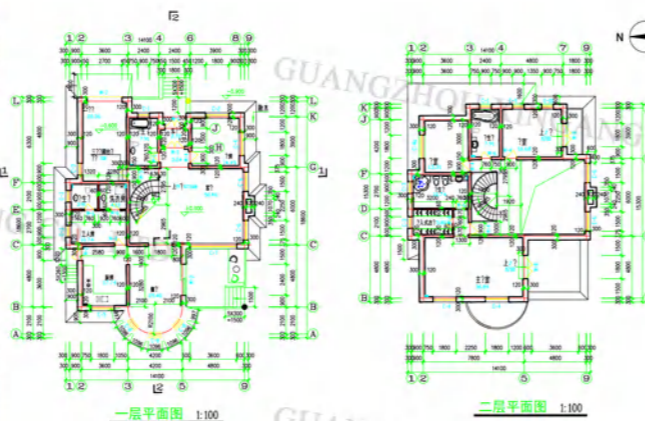


# ENGINEERING EXAMPLES

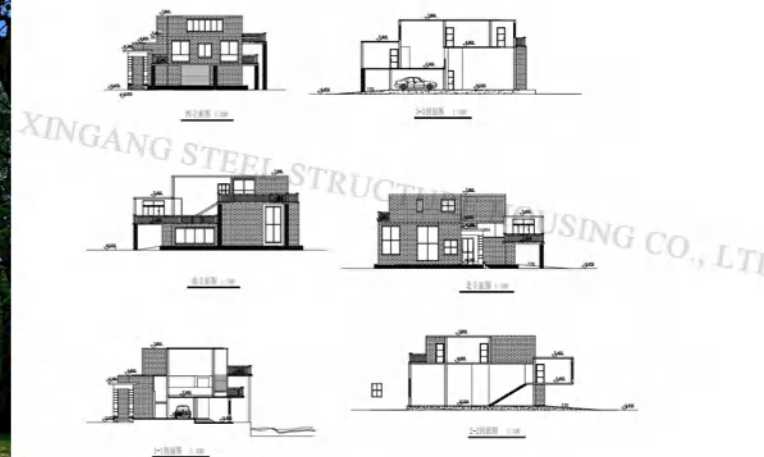
▶ DETACHED VILLA-----≈270m<sup>2</sup>



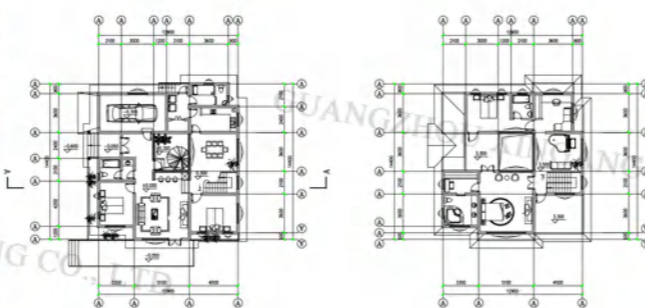
▶ DETACHED VILLA-----≈525m<sup>2</sup>



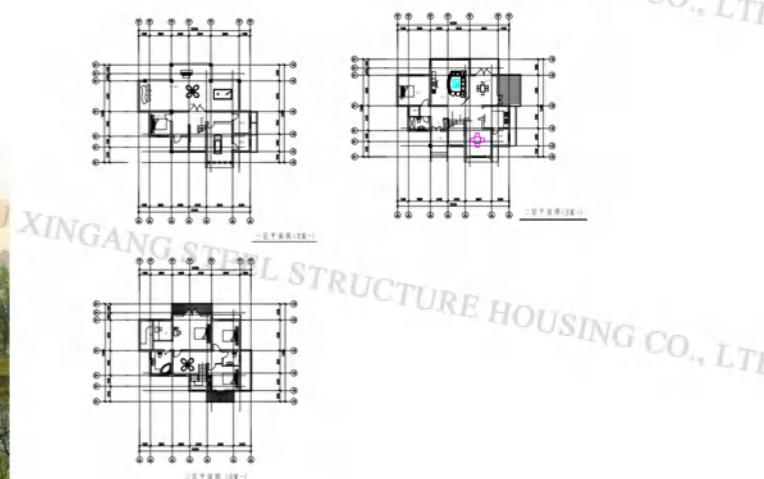
▶ DETACHED VILLA-----≈279m<sup>2</sup>



▶ DETACHED VILLA-----≈371.5m<sup>2</sup>

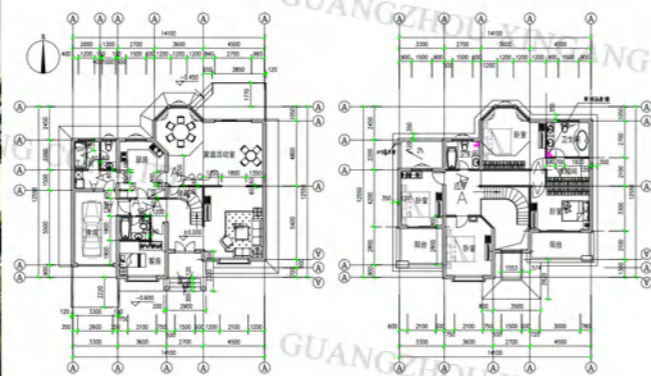


▶ DETACHED VILLA-----≈410m<sup>2</sup>



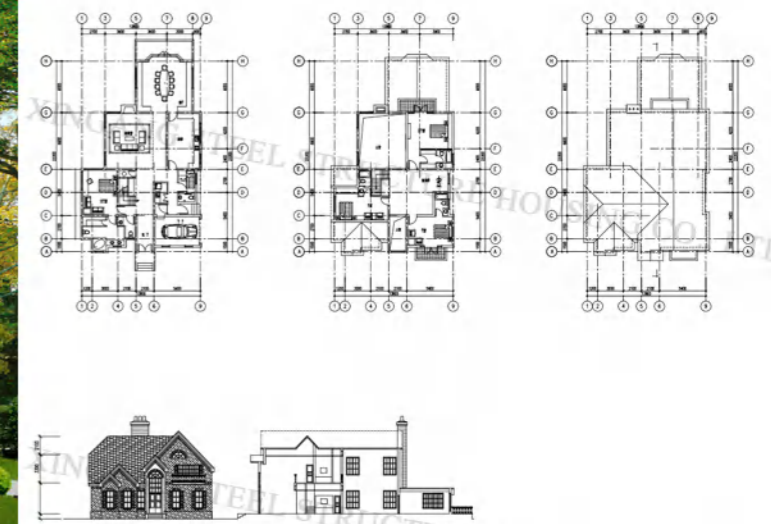
# ENGINEERING EXAMPLES

▶ DETACHED VILLA-----≈302m<sup>2</sup>



# ENGINEERING EXAMPLES

▶ DETACHED VILLA-----≈491.36m<sup>2</sup>



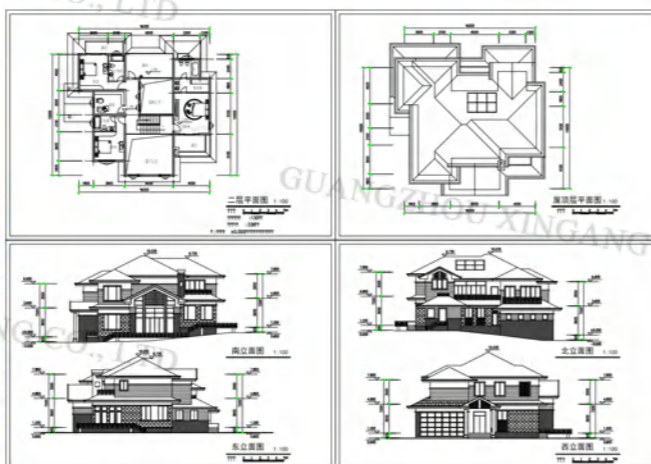
▶ DETACHED VILLA-----≈230m<sup>2</sup>



▶ DETACHED VILLA-----≈504.9m<sup>2</sup>



▶ DETACHED VILLA-----≈564.48m<sup>2</sup>



▶ DETACHED VILLA-----≈181m<sup>2</sup>

