

PREFAB HOUSE

| MANY STYLES | GOOD QUALITY | HIGH INTEGRITY |
| DOMESTIC RESIDENTIAL | COMMERCIAL BUILDINGS
| PUBLIC BUILDINGS |



BUILD THE HOUSE OF YOUR DREAMS

Foshan Nanhai Guose Intelligent Facilities Co., Ltd. specializes in the production and construction of container houses. The products include packing boxes, fast consolidation boxes, folding boxes, expansion boxes, corrugated boxes, etc.

CONTACT US



ADDRESS:

Workshop 1, Ground Floor, No. 8 Shuitou Road, Wenjiao Community,
Lishui Town, Nanhai District, Foshan City, Guangdong Province



COMPANY WEBSITE:

www.steelmarkhouse.com
<https://gdguose.en.alibaba.com/>

TRUST US, GUOSE CONTAINER HOUSE IS YOUR FIRST CHOICE AND THE MOST IDEAL CHOICE.

Guose is a professional company integrating design, production and after-sales service. The total area of plant and equipment factory is 20,000 square meters, and the production area is 15,000 square meters. In addition to implementing the 1809001-2015 quality management system certification, we have also continuously improved ourselves and obtained ISO9001, SGS, CE certification. Our company is committed to providing customers with first-class quality and efficient pre-sales and after-sales service. After 24 years of development, we have more than 150 employees, including designers, business personnel, production personnel and management personnel. With a diligent team and a harmonious working atmosphere, our products are becoming more and more perfect and diversified, not only beautiful in appearance, but also practical. From project conception, design, manufacture, construction to installation, we will do our best to provide customers with the most scientific, reasonable and effective solutions.



▶ ISO9001 ▶ STEEL STRUCTURE CE CERTIFICATE ▶ SAFETY PRODUCTION STANDARDIZATION CERTIFICATE ▶ GOLD TUV CERTIFICATION ▶ GOLD TUV CERTIFICATION



▶ PATENT CERTIFICATE ▶ PATENT CERTIFICATE ▶ PATENT CERTIFICATE ▶ PATENT CERTIFICATE

CONTENTS

// FLAT PACK CONTAINER - BASIC INTRODUCTION	02
// DETACHABLE CONTAINER-BASIC INTRODUCTION	03
// FOLDING BOX - BASIC INTRODUCTION	04
// PRODUCT CASE (FLAT PACK CONTAINER, DETACHABLE CONTAINER, FOLDING CONTAINER)	05-24
// CORRUGATED CONTAINER - BASIC INTRODUCTION	25
// CORRUGATED CONTAINER - PRODUCT CASE	26-32
// EXPANDABLE CONTAINER - BASIC INTRODUCTION	33
// EXPANDABLE CONTAINER AND OTHER INTEGRATED HOUSING PRODUCT EXAMPLES	34-35

FLAT PACK CONTAINER

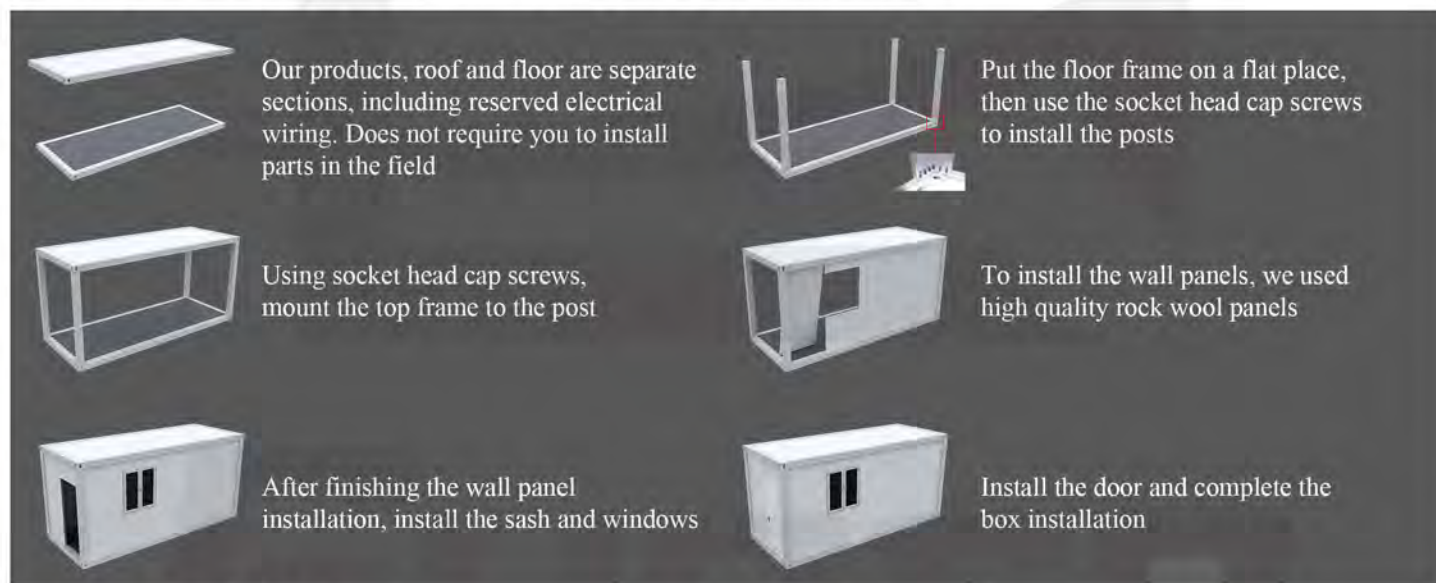
The flat pack container is a new generation of prefabricated houses, which is a complete unit in itself and can be used as a single mobile home, or can be combined horizontally or stacked to two or three storeys. It can be bolted, easy to install, fast to transport, and has a lifespan of about 15-20 years.



Product name	flat pack container
Product Size	5800*2450*2800mm
Thermal insulation	$\lambda=0.048\text{W/m}\cdot\text{K}$
Sound insulation	$\geq 30\text{dB}$
Ground live load	2.0kN/m^2
Fire resistance	0.60kN/m^2
Wind resistance	Class A
Shock resistance	Level 8
Roof live load	1.0kN/m^2
Door	galvanized Door
Window	aluminum alloy window
Floor	cement fiber board

► INSTALLATION PROCESS

The top and bottom are a complete module, only need to install the post, wall panel, ceiling and doors and windows after receiving. The installation labor cost is low and convenient.



► LOCAL DETAIL



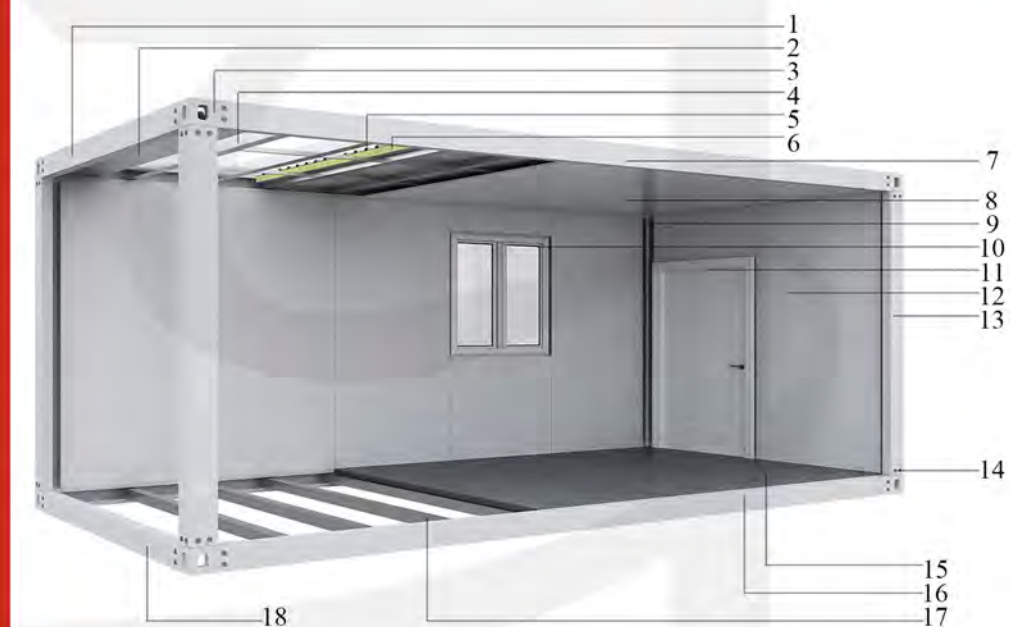
DETACHABLE CONTAINER

The box is the most commonly used type of box, which can be disassembled and shipped in bulk. The transportation cost is low and the transportation space is small.

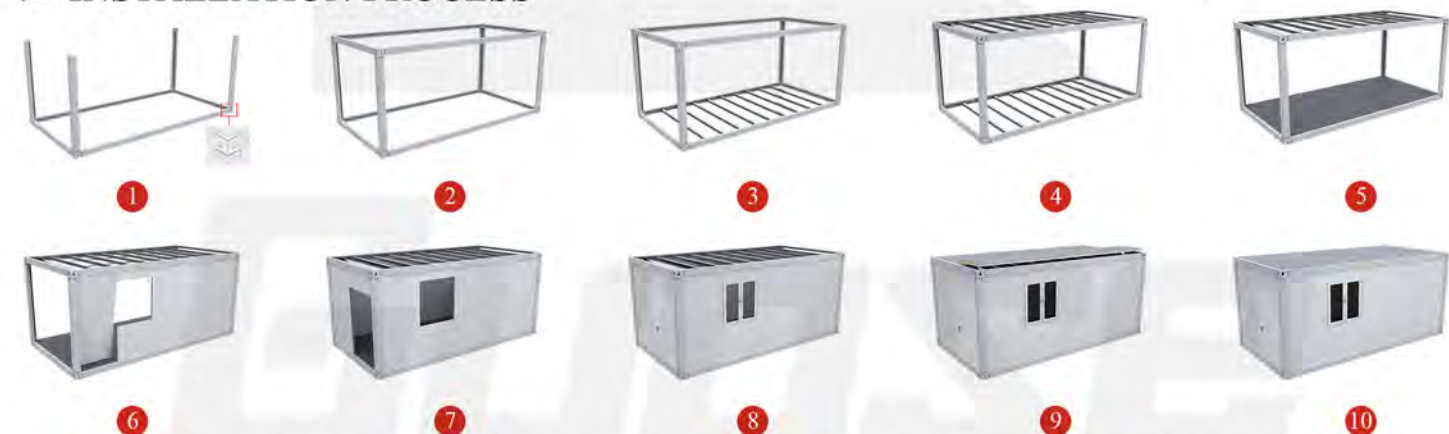


EXPLODED VIEW

1. Top short beam
2. Top drain port
3. Corner head
4. Top square tube
5. Outer roof tile
6. Glass wool roll
7. Top Long Beam
- 8.831 color steel ceiling
9. Drainpipe
10. Windows
11. Door
12. Rock wool wall panel
13. Pillars
14. Screws
15. Cement fiberboard
16. Bottom Long Beam
17. Bottom square tube
18. Bottom Short Beam



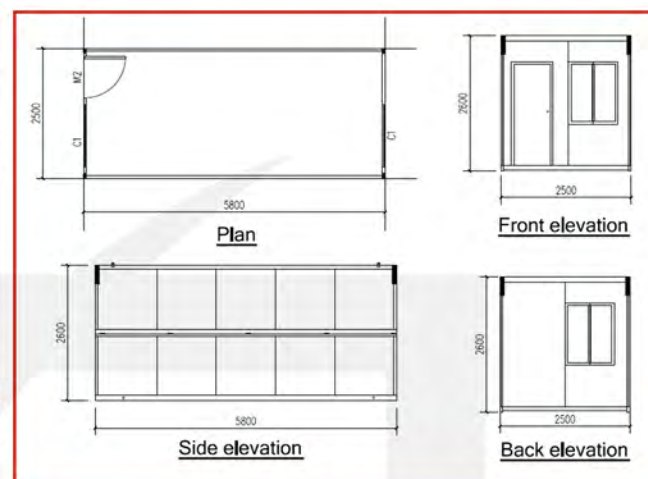
► INSTALLATION PROCESS



1. Put the bottom main beam, the bottom beam and the corner piece on a flat place, and then connect it to the column with hexagon socket head screws.
2. Install the top frame on the column to complete the installation of the main frame.
3. Install the bottom square tube.
4. Install the top square pipe, gutters and drains.
5. Install the floor. We have cement fiber board and glass magnesium board for flooring.
6. To install the wall panel, we use high quality rock wool board.
7. Complete the installation of the wall panels.
8. Install windows and doors.
9. Install waterproof color steel tiles on the top.
10. Install the internal ceiling and complete the final assembly.

FOLDING CONTAINER

FOLDING CONTAINER IS A TYPICAL MODULAR HOUSE, WHICH IS QUICK TO INSTALL AND WIDELY USED IN MANY FIELDS.



► BASIC PARAMETERS

Expand dimensions: 2500mm*5800mm*2600mm

Folded size: 2500mm*5800mm*350mm

- 1: Steel structure (galvanized + medium gray spray paint)
(The main beam is 160C steel with a thickness of 2.5mm; the column is 2.0mm; the top inner frame is 1.5mm; the bottom purlin is 2.0mm).
- 2: 40mm IEPS firewall board (double-sided 0.326mm color steel plate)
- 3: Roof 0.6mm steel plate + 100mm thermal insulation glass wool + color steel ceiling
- 4: 18mm glass magnesium floor
- 5: Aluminum alloy sliding window + stainless steel anti-theft net
- 6: IEPS sandwich panel door with ball lock
- 7: Electrical system (including 2 LED lights, 2 multifunctional sockets, 1 air conditioner socket, and a switch)



NO.1 MATERIAL ASSEMBLY
Rock wool thermal insulation wall panel, antibacterial and easy to clean



NO.2 HIGH QUALITY CHOICE
Selection of high-quality steel, processing and production

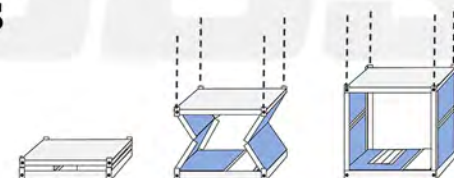


NO.3 THICKENED STEEL FRAME
Careful selection of materials to ensure product quality



NO.4 WELL POLISHED
Every weld is carefully polished

► INSTALLATION PROCESS



1. The box is fully folded.
2. Hang the hook into the upper hanging hole, lift it up smoothly, and the box gradually unfolds.
3. At this point, the frame around the box is fully unfolded, just lift the front and back walls, at the bottom and push them up.
(Note that after all cabinets are installed, remove the hooks)

PRODUCT CASE



► PHILIPPINE CONTAINER PROJECT

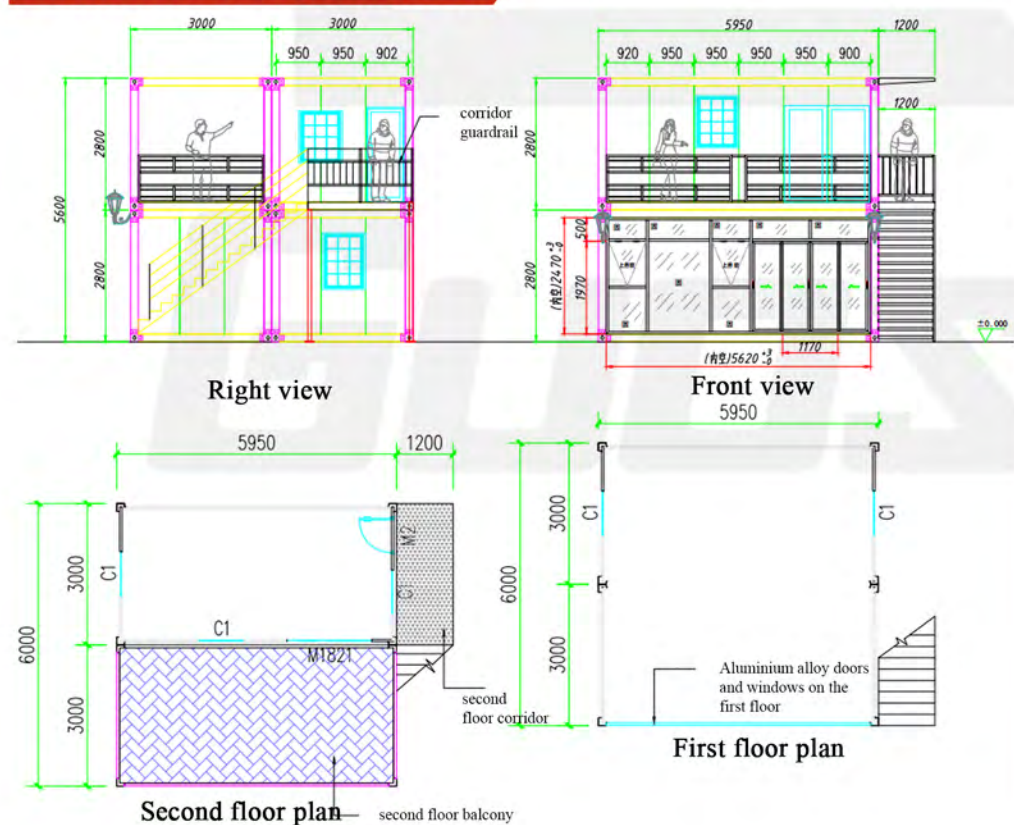
Country: Philippines
Application: Residential Container
Box: Detachable container
Size: 5950*3000*2800mm

Style: Single layer, double layer
Quantity: 9 sets
Usable area: 1 model with a usable area of 18m²,
3 models with a total usable area of 72m²
Building area: 72m²

PRODUCT CASE



PRODUCT THREE VIEWS

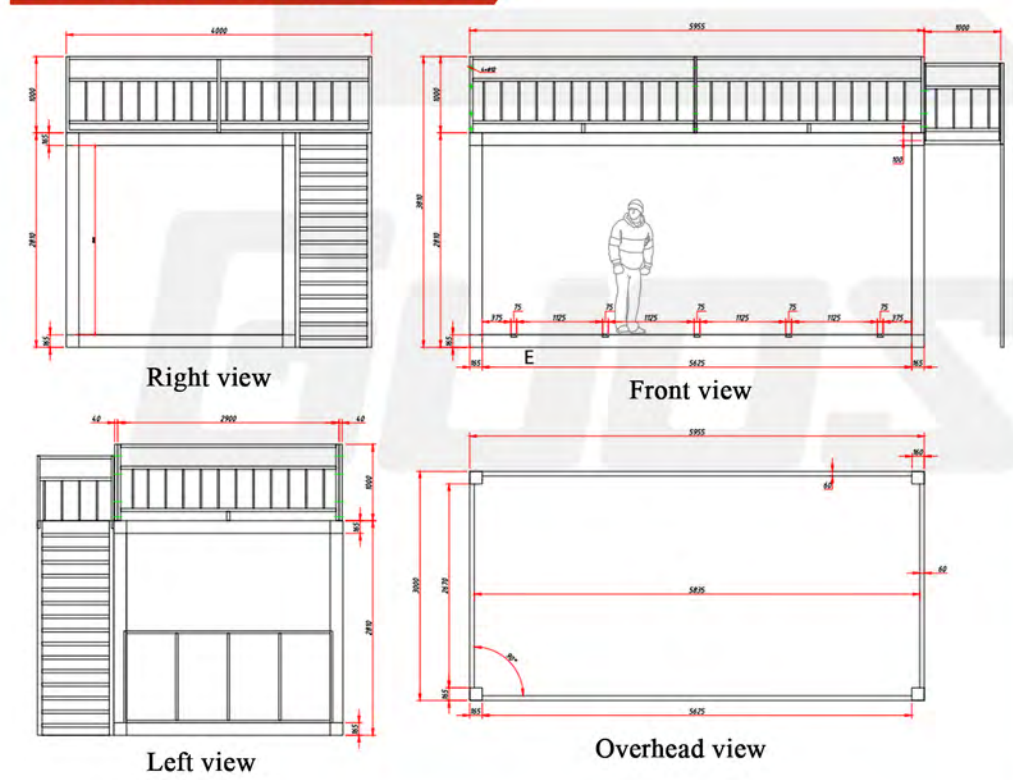


OFFICE
Country: Domestic
Application: Commercial and Residential
Box: Detachable container
Size: 5950*3000*2800mm
Quantity: 18 sets
Usable area: 71.4m²
Building area: 35.7m²

PRODUCT CASE



PRODUCT THREE VIEWS

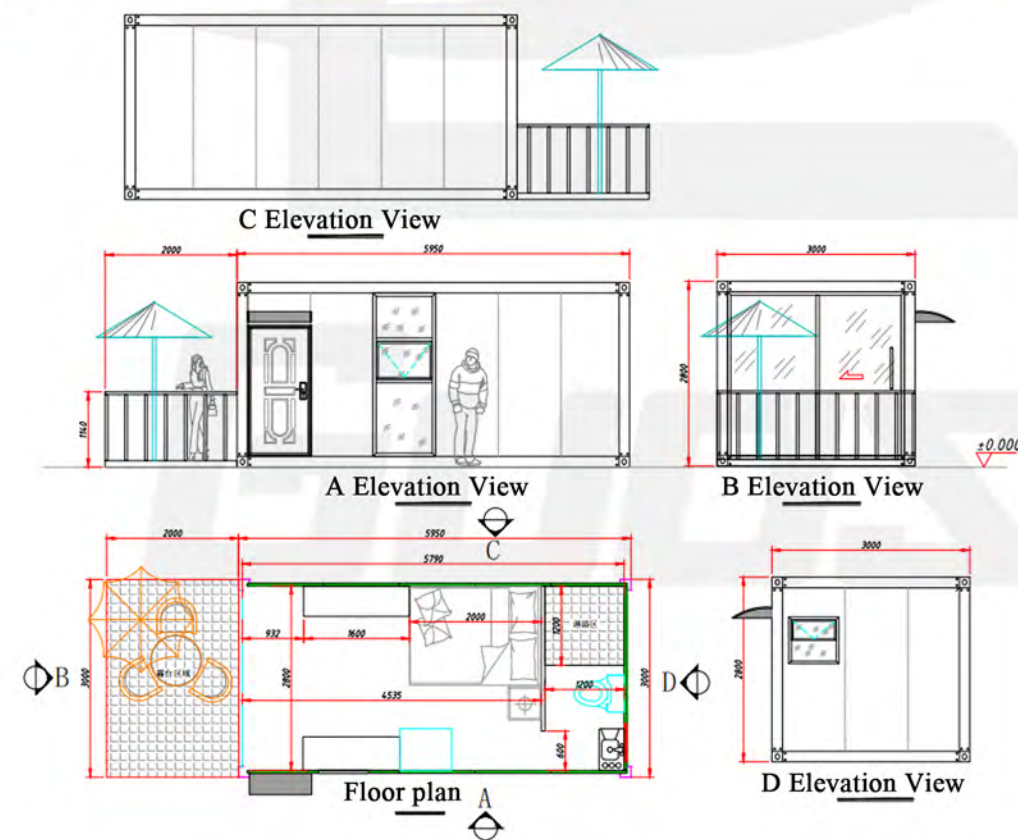


HYDRAULIC CAFE
Country: Domestic
Application: Commercial
Box: Detachable container
Size: 5955*4000*3810mm
Quantity: 15 sets
Style: One layer container + Two-tier platform
Usable area: 48m²
Building area: 24m²

PRODUCT CASE



PRODUCT THREE VIEWS



► HOTEL

Country: Zimbabwe
 Application: Commercial and Residential
 Box: Detachable container
 Size: 7950*3000*2800mm
 Quantity: 20 sets
 Usable area: 23.85m²
 Building area: 23.85m²

PRODUCT CASE



PRODUCT THREE VIEWS



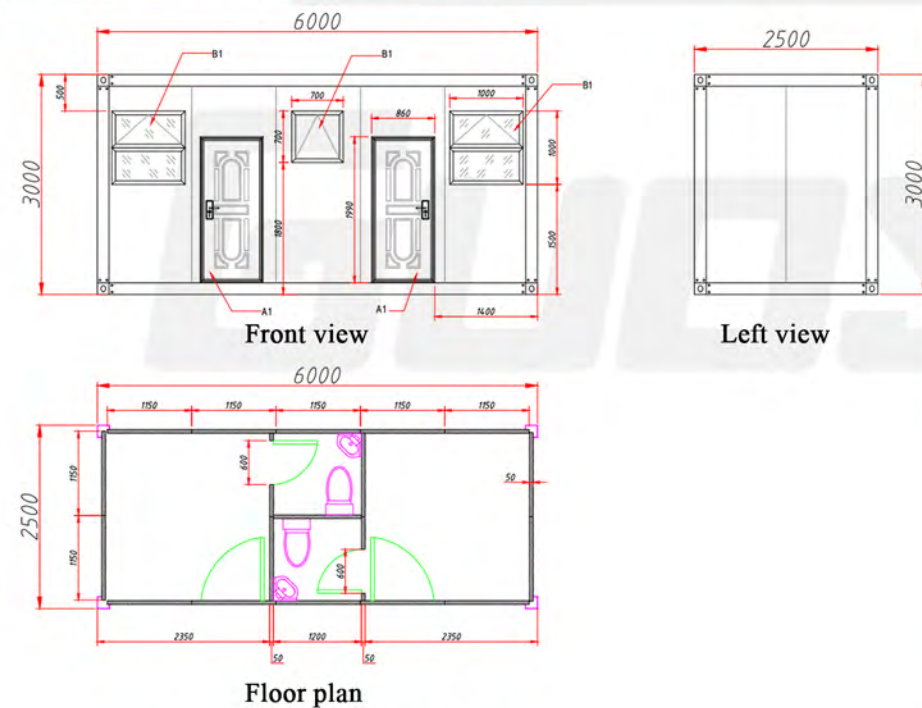
► YELLOW CONVENIENCE STORE + OFFICE

Country: Domestic
 Application: Commercial
 Box: Detachable container
 Size: 6090*2485*3280mm
 Quantity: 20 sets
 Building area: 20m²

PRODUCT CASE



PRODUCT THREE VIEWS



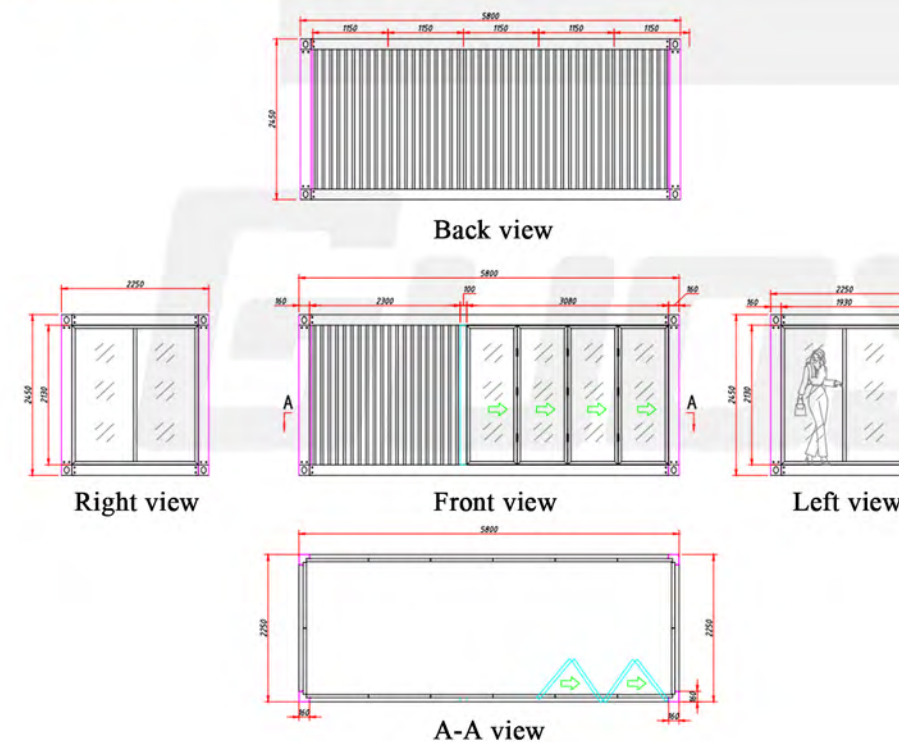
ISOLATION CAMP

Country: Philippines
 Application: Residential
 Box: Detachable container
 Size: 6000*2500*3000mm
 Quantity: 15 sets
 Usable area: 15m²
 Building area: 15m²
 Interior configuration: 2 rooms(with toilet)

PRODUCT CASE



PRODUCT THREE VIEWS



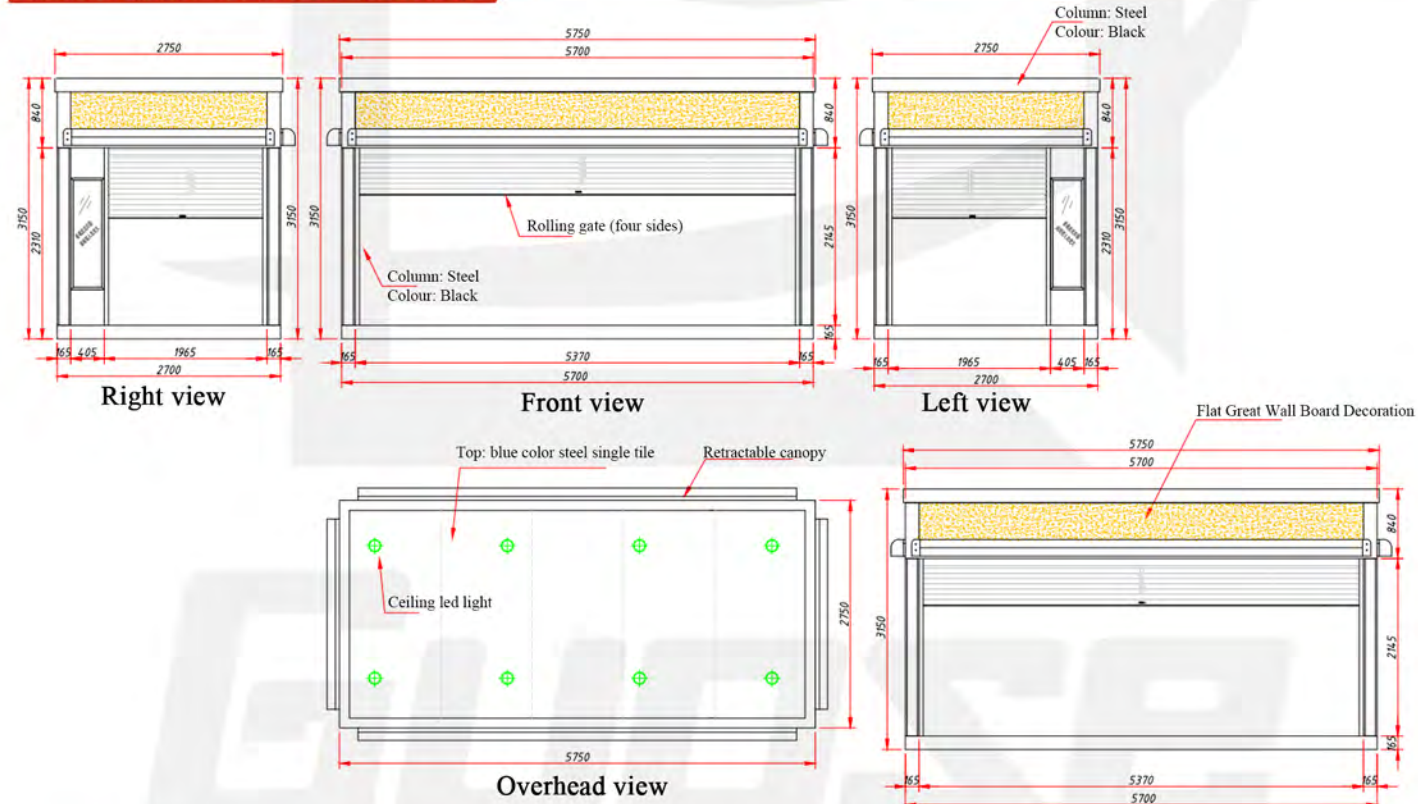
IRISH CONTAINER

Country: Ireland
 Application: Commercial
 Box: Detachable container
 Size: 5800*2250*2450mm
 Quantity: 10 sets
 Usable area: 13.05m²
 Building area: 13.05m²

PRODUCT CASE



PRODUCT THREE VIEWS



SALES STORE

Country: Mexico
 Application: Commercial
 Box: Detachable container

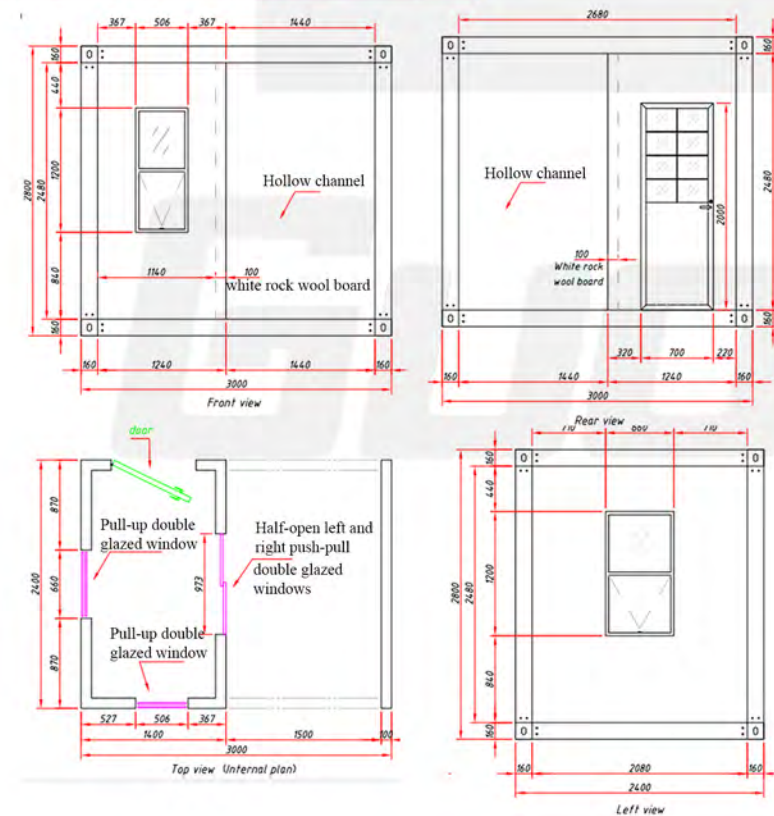
Size: 5750*2750*3150mm
 Quantity: 15 sets
 Usable area: 15.8m²
 Building area: 15.8m²

Configuration:
 LED light+switch+socket+pvc ceiling+
 Glass magnesium floor, etc.

PRODUCT CASE



PRODUCT THREE VIEWS



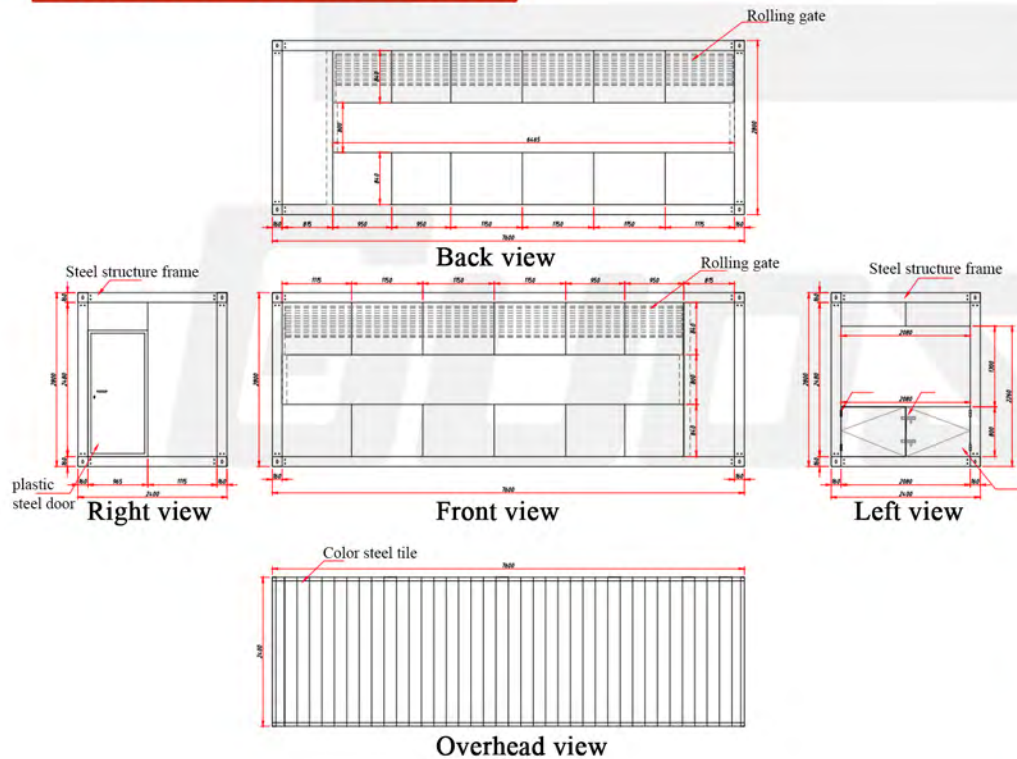
GUARD ROOM

Country: Poland
 Application: Commercial
 Box: Detachable container
 Size:
 3000*2400*2800mm
 Quantity: 10 sets
 Usable area: 7.2m²
 Building area: 7.2m²

PRODUCT CASE



PRODUCT THREE VIEWS



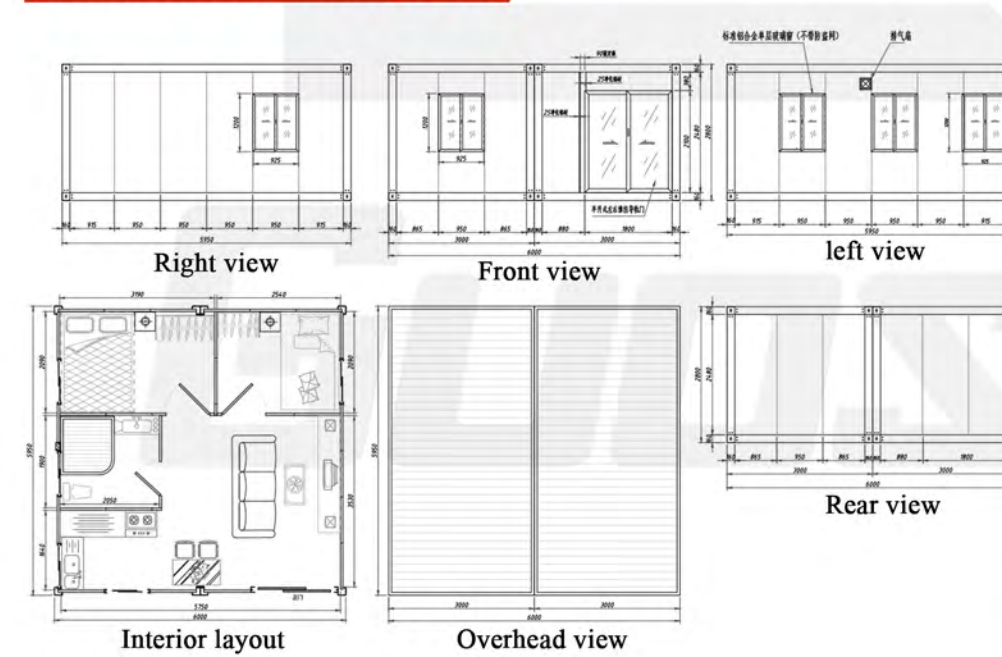
► SHOP

Country: Georgia
 Application: Commercial
 Box: Detachable container
 Size: 7600*2400*2800mm
 Quantity: 12 sets
 Usable area: 18.24m²
 Building area: 18.24m²
 Configuration:
 831 color steel ceiling
 blue color steel tile
 black rock wool board
 1 leakage switch
 2 rolling gates
 LED light source
 3 switch sockets

PRODUCT CASE



PRODUCT THREE VIEWS



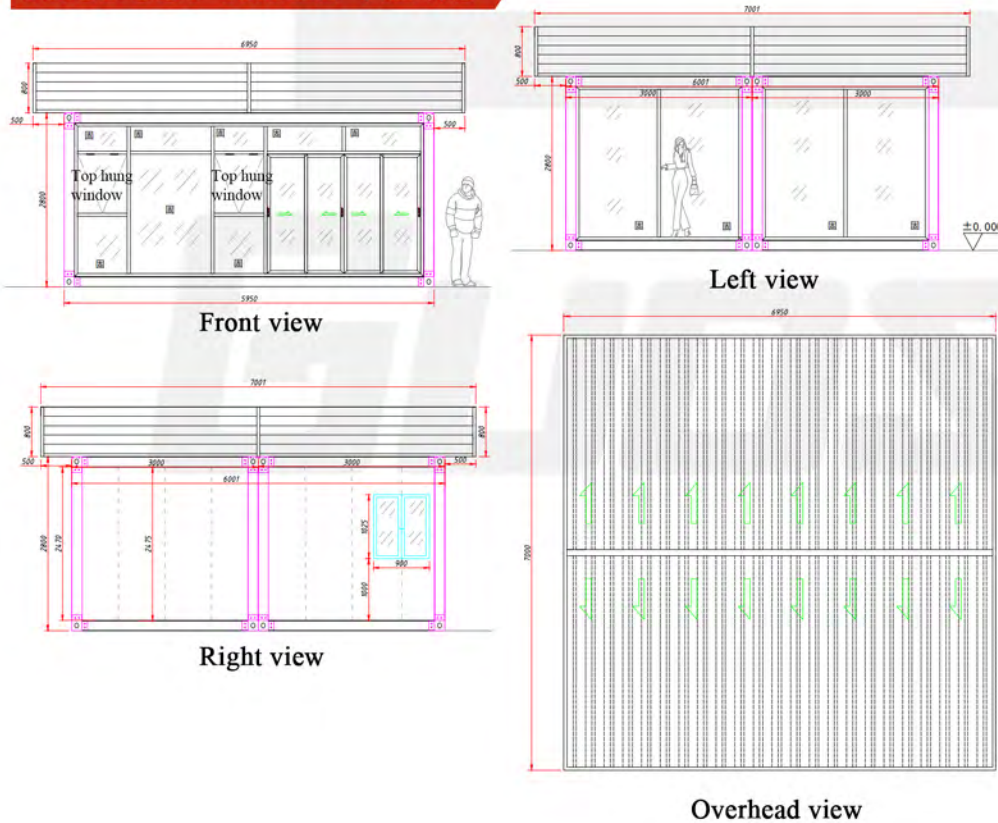
► RESIDENTIAL

Country: Australia
 Application: Residential
 Box: Detachable container
 Size: 6000*5950*2800mm
 Quantity: 10 sets
 Usable area: 35.7m²
 Building area: 35.7m²
 Configuration:
 Ceiling:
 white bamboo and wood fiberboard
 Floor:
 glass magnesium board + spc floor
 Wall panel: foam board
 Top tile: foam board
 Windows:
 Aluminum alloy glass windows
 Door: glass sliding door

PRODUCT CASE



PRODUCT THREE VIEWS



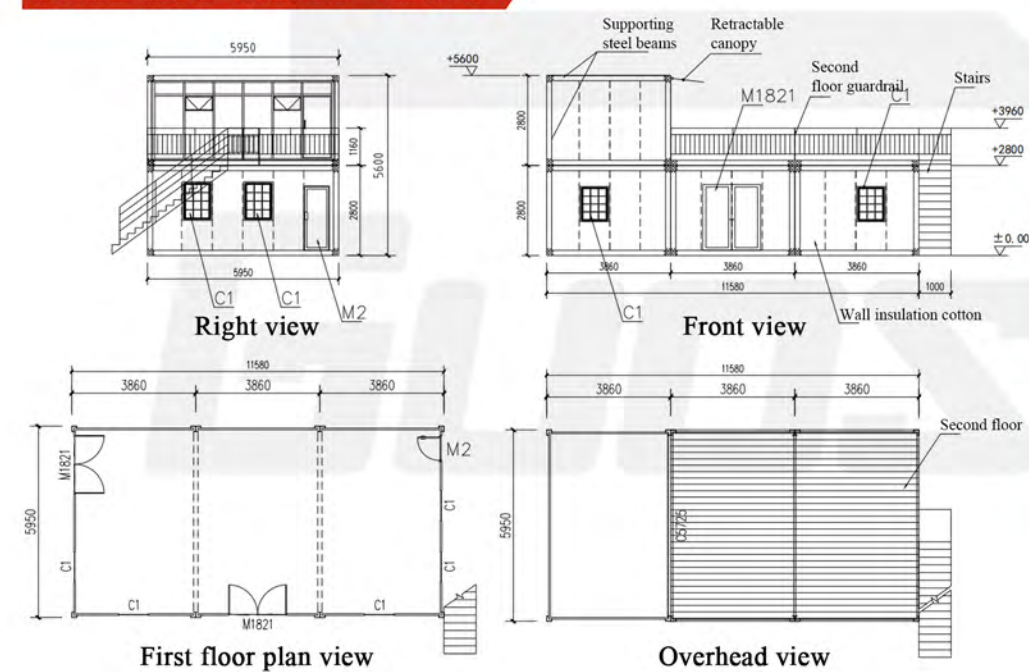
► STOREHOUSE

Country: Domestic
 Application: Commercial
 Box: Detachable container
 Size: 5950*3000*2800mm
 Quantity: 2 sets
 Usable area: 36m²
 Building area: 36m²

PRODUCT CASE



PRODUCT THREE VIEWS



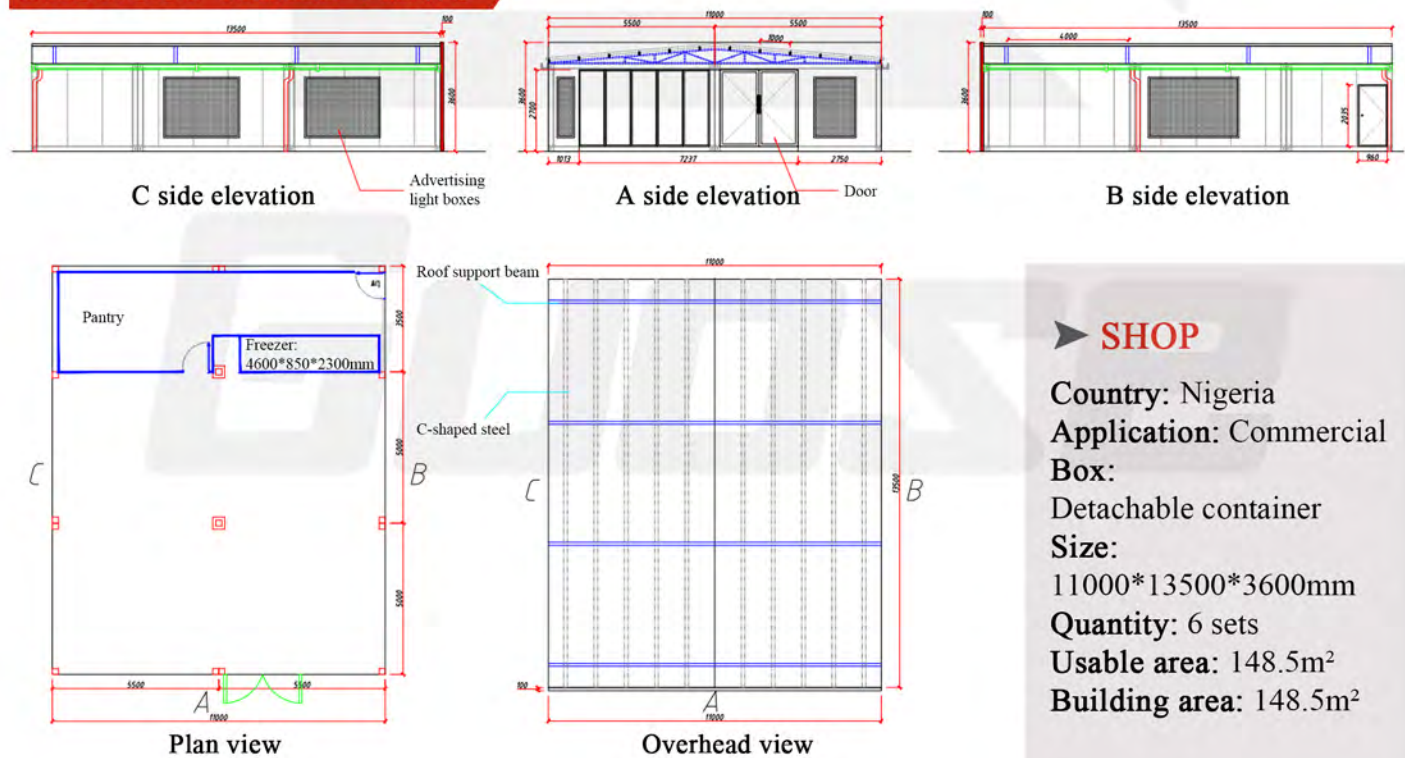
► COFFEE SHOP

Country: Dominica
 Application: Commercial
 Box: Detachable container
 Size: 11580*5950*5600mm
 Quantity: 4 sets
 Usable area: 137.8m²
 Building area: 68.9m²

PRODUCT CASE



PRODUCT THREE VIEWS



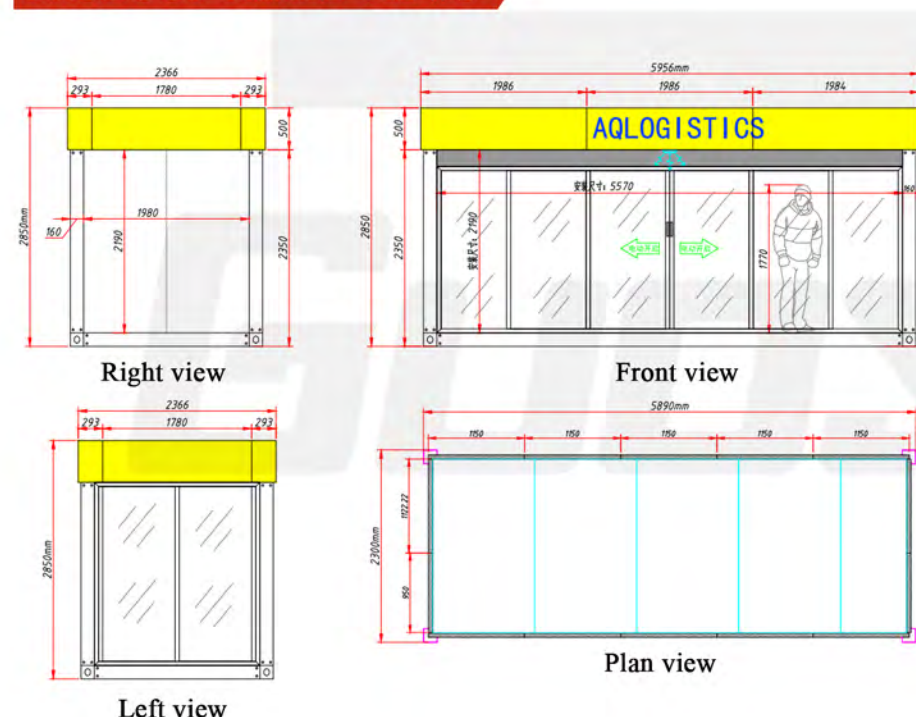
➤ **SHOP**

Country: Nigeria
 Application: Commercial
 Box: Detachable container
 Size: 11000*13500*3600mm
 Quantity: 6 sets
 Usable area: 148.5m²
 Building area: 148.5m²

PRODUCT CASE



PRODUCT THREE VIEWS



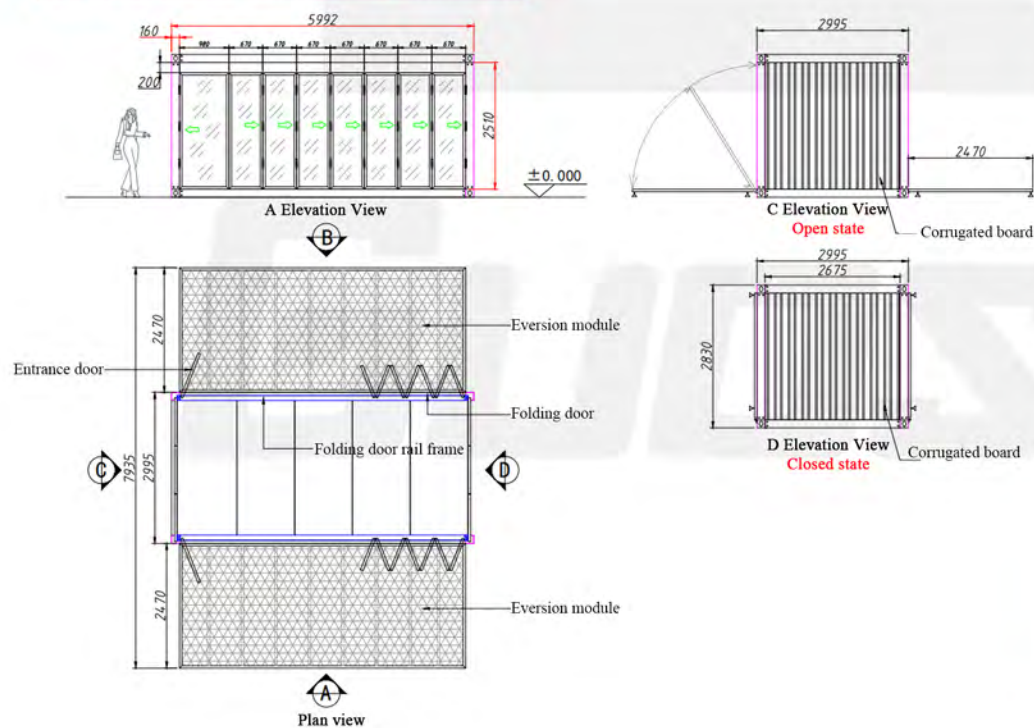
➤ **SHOP**

Country: France
 Application: Commercial
 Box: Detachable container
 Size: 5956*2366*2850mm
 Quantity: 10 sets
 Usable area: 14.1m²
 Building area: 14.1m²

PRODUCT CASE



PRODUCT THREE VIEWS



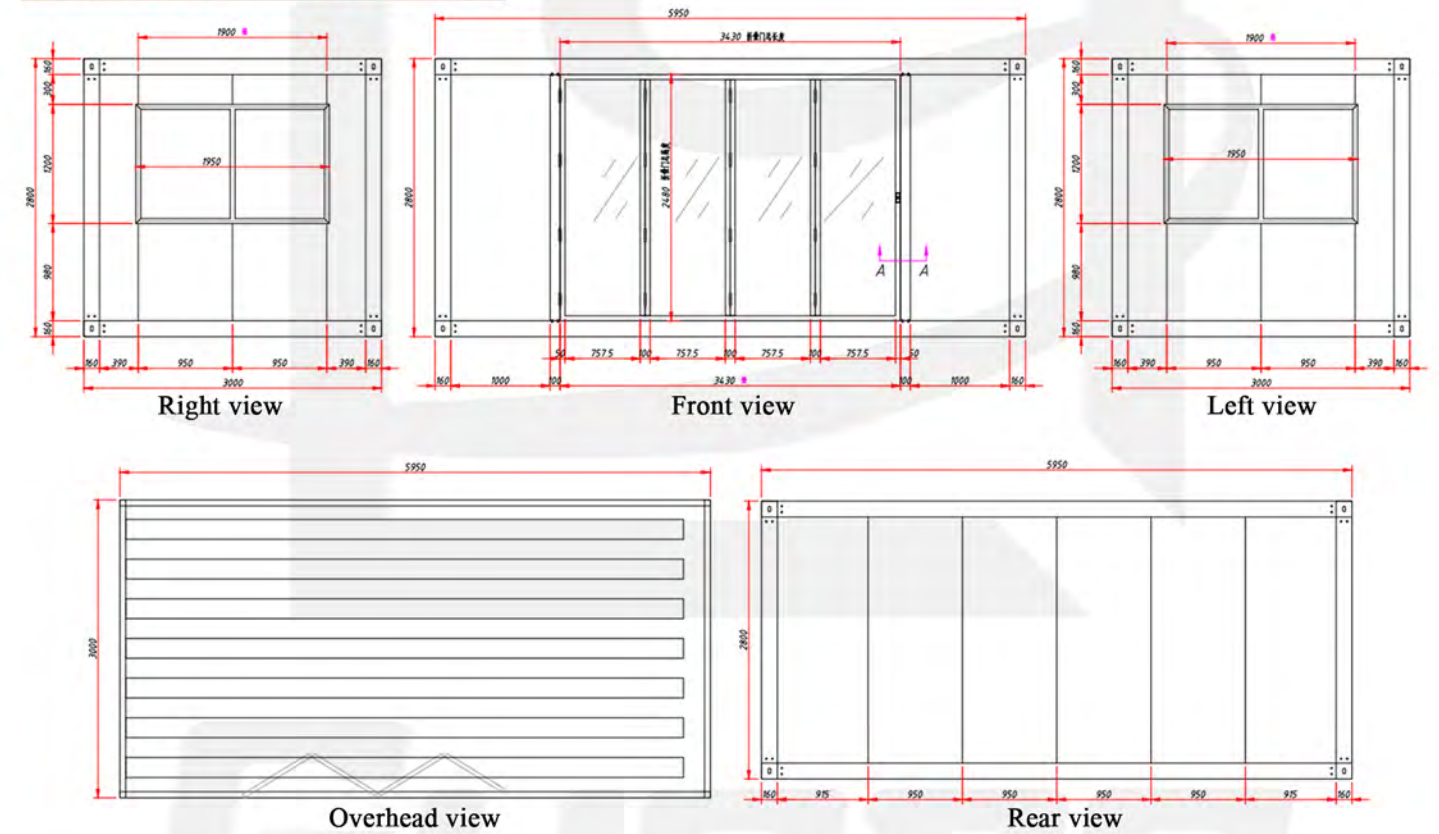
► COFFEE SHOP

Country: Domestic
Application: Commercial
Box: flat pack container
Size: 5992*2995*2830mm
Quantity: 5 sets
Usable area: 47.5m²
Building area:
 Closed state 17.94m²
 Open state 47.5m²

PRODUCT CASE



PRODUCT THREE VIEWS



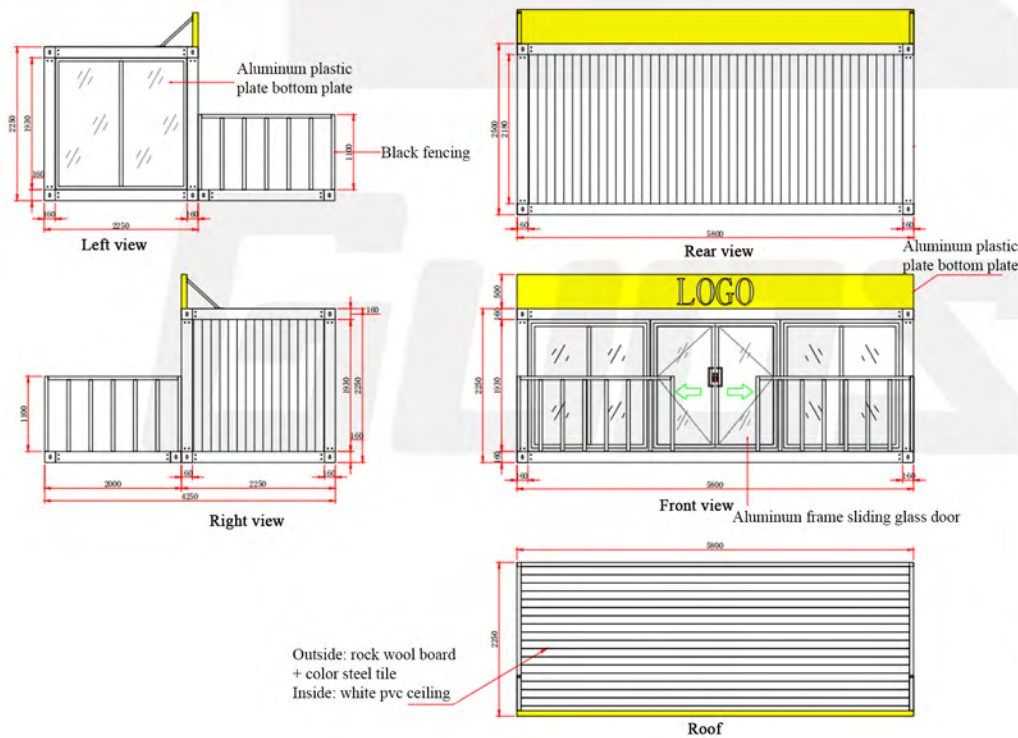
► DRESSING ROOM

Country: United States
Application: Commercial
Box: Flat pack container
Size: 5950*3000*2800mm
Quantity: 6 sets
Usable area: 18m²
Building area: 18m²

PRODUCT CASE



PRODUCT THREE VIEWS



► CONVENIENCE STORE

Country: Australia
 Application: Commercial
 Box: Flat pack container
 Size: 5800*4250*2750mm
 Quantity: 10 sets
 Usable area: 24.65m²
 Building area: 24.65m²

PRODUCT CASE



► FOLDING CONTAINER

Country: Australia
 Application: Residential
 Size: Expand to 5800*2440*2552mm, Closed is 5800*2440*522mm
 Quantity: 8 sets
 Usable area: 14.152m²
 Building area: 14.152m²

PRODUCT CASE



► FLAT PACK CONTAINER

Country: Domestic
Application: Residential
Box: Flat pack container
Size: 5800*2450*2800mm
Quantity: 10 sets
Usable area: 14.21m²
Building area: 14.21m²

PRODUCT CASE



► BASIC INDEX

External dimensions:
 6000mm*3000mm*2730mm
Inner dimension:
 5825mm*2835mm*2510mm
Thermal insulation performance:
 $\lambda=0.048\text{W/m}\cdot\text{K}$
Wind resistance: 0.60kN/m²
Sound insulation performance:
 $\geq 30\text{dB}$
Fire performance: Class A
Seismic performance: Grade 8



► BASIC COMPOSITION

The corrugated box is composed of structure, wall panels, roof, ground, doors and windows, decoration, electrical appliances and other parts.

Structural parts (main profiles):

Ground main beam, ground secondary beam, column, roof main beam, sandalwood strip,

Surface treatment: anti-rust primer + top coat

Waterproof treatment: glass glue waterproof treatment

Wall panel: glass wool large corrugated wall panel

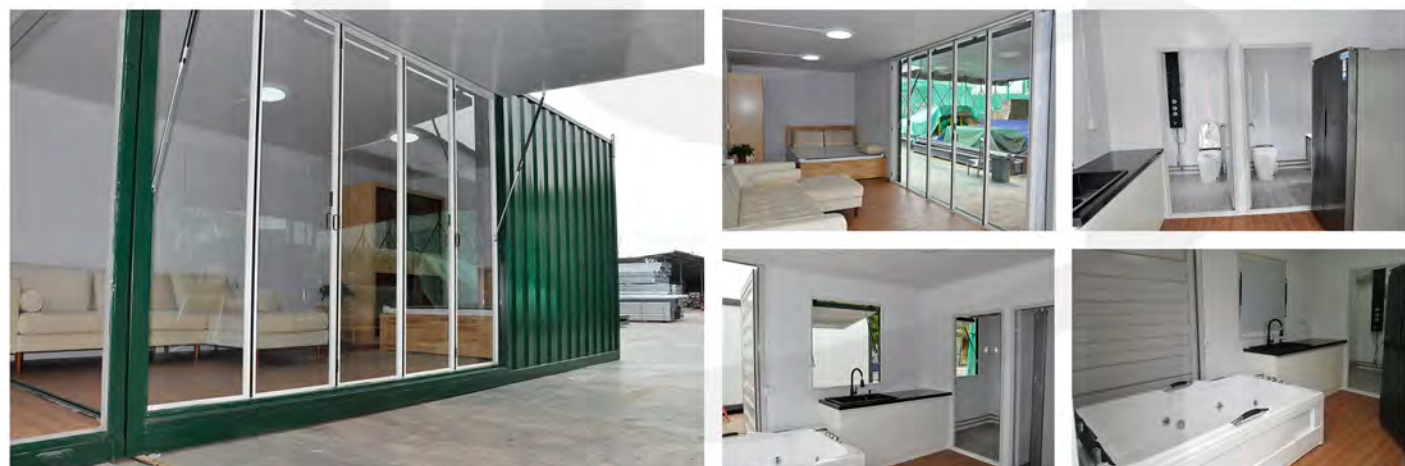
Roof: foam flat roof

Floor: cement fiberboard

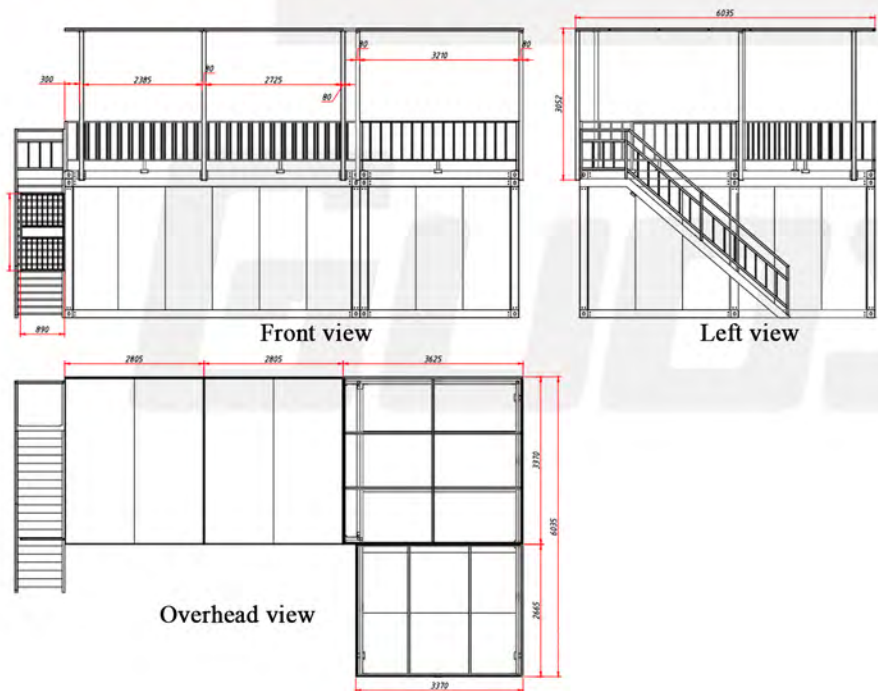
Door: Galvanized Door

Window: plastic steel window

PRODUCT CASE



PRODUCT THREE VIEWS



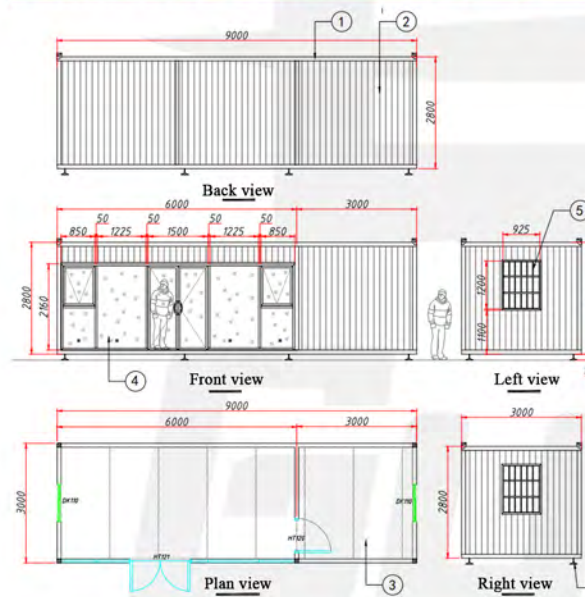
► SEA VIEW ROOM

Country: Hong Kong, China
Application: Residential
Box: Corrugated container
Size: 9235*6035*5782mm
Quantity: 8 sets
Usable area: 80m²
Building area: 40m²
Remarks: The interior layout of the product is one room, one living room, two bathrooms and one kitchen. In addition, there is a high-grade bathtub. The door next to the bathtub can be opened as a viewing platform, and you can enjoy the outside scenery while taking a bath. The front has a glass folding door and a hydraulic door, which can be used as a rain shelter when the hydraulic door is unfolded.

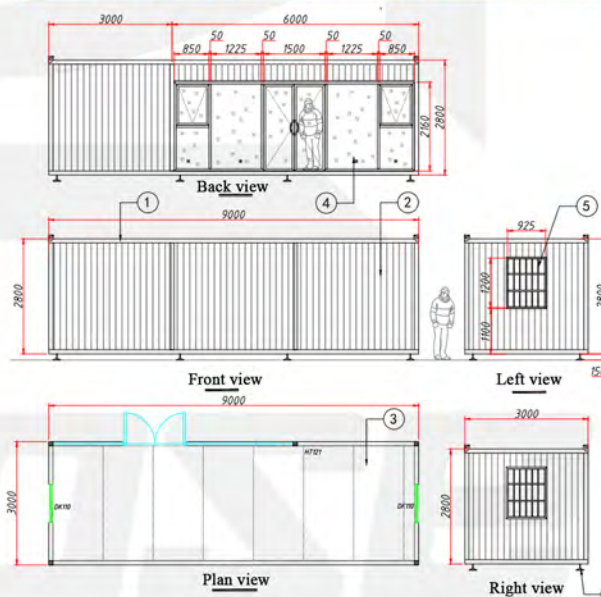
PRODUCT CASE



PRODUCT THREE VIEWS---A



PRODUCT THREE VIEWS---B



► CORRUGATED CONTAINER

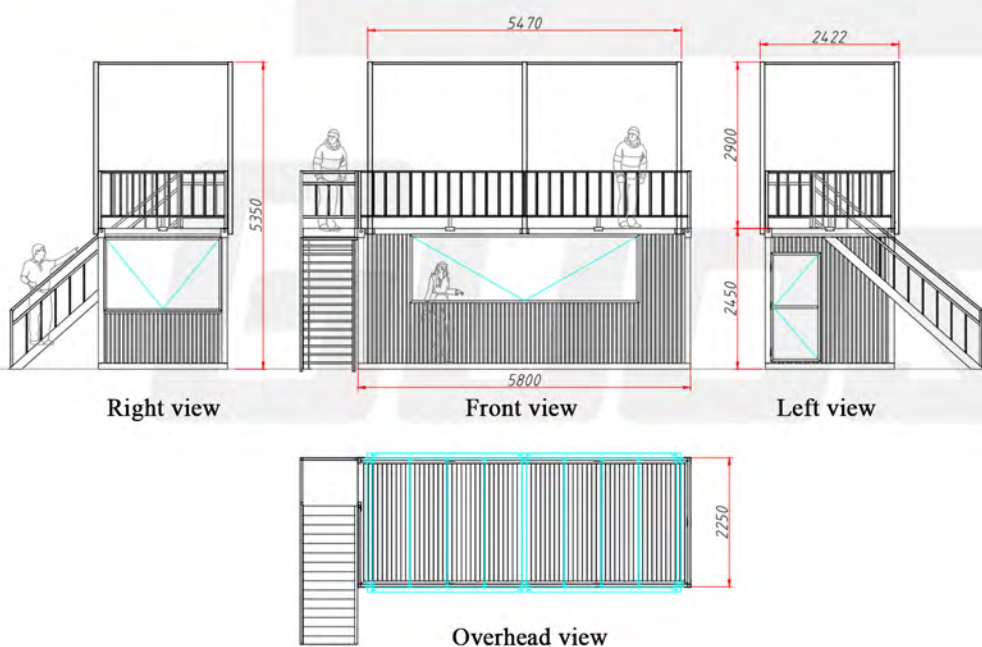
Country: Foshan, China
Application: Commercial
Box: Corrugated container
Size:
 Type A: 9000*3000*2800mm
 Type B: 9000*3000*2800mm

Quantity: 50 sets
Usage area:
 Type A: 27m² Type B: 27m²
Building area:
 Type A: 24m² Type B: 27m²

PRODUCT CASE



PRODUCT THREE VIEWS



SALES SHOP

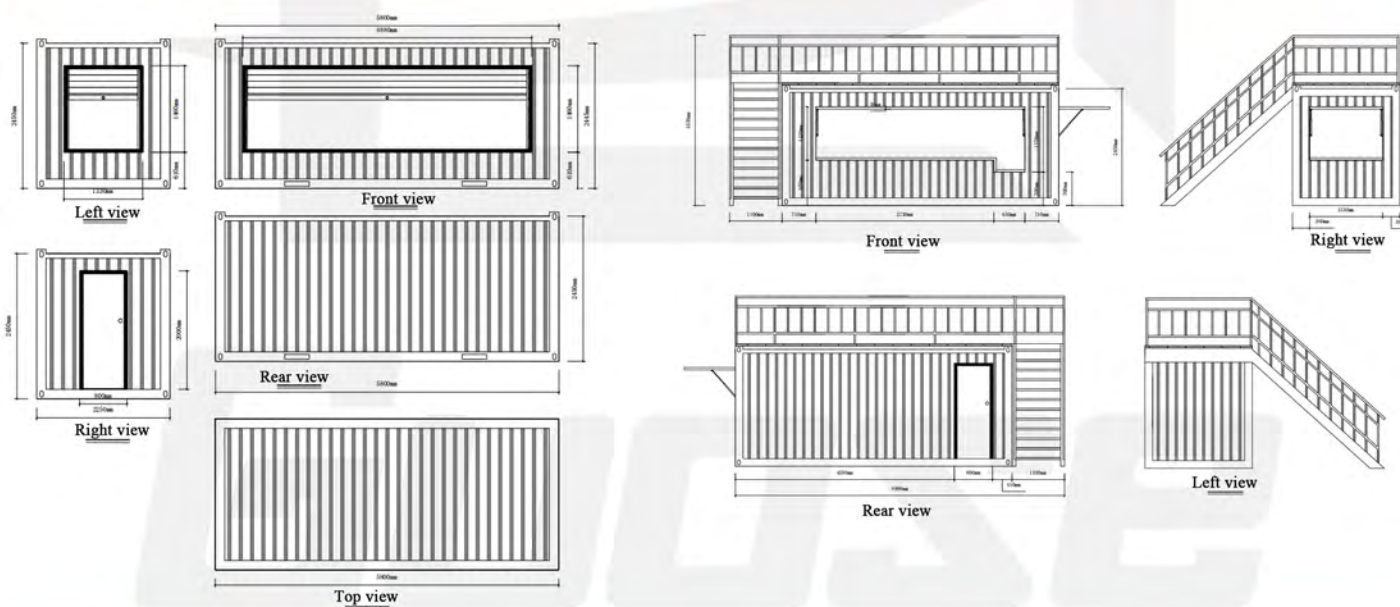
Country: Australia
Application: Commercial
Box: Corrugated container
Size: 5800*2422*5350mm
Quantity: 25 sets
Usable area: 28m²
Building area: 14m²
Remarks: The stairs can go up to the second floor platform, with awning on the second floor. It can be sheltered from the wind and rain, and the guests are in. After purchasing the item on the first floor, you can go up to the second floor to enjoy.

PRODUCT CASE



VERSION WITH ROLLING GATE

VERSION WITH HYDRAULIC



COFFEE SHOP

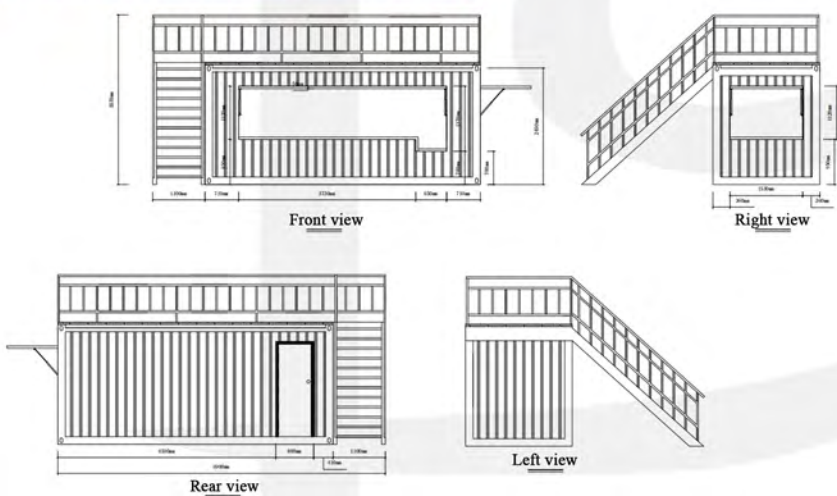
Country: Philippines
Application: Commercial
Box: Corrugated container
Size:
 Rolling gate type: 5800*2250*2450mm
 Hydraulic model: 6900*2250*3570mm

Quantity: 50 sets
Usage area:
 Rolling gate type: 13.05m² Hydraulic type: 31m²
Building area:
 Rolling gate type: 13.05m² Hydraulic type: 15.52m²

PRODUCT CASE

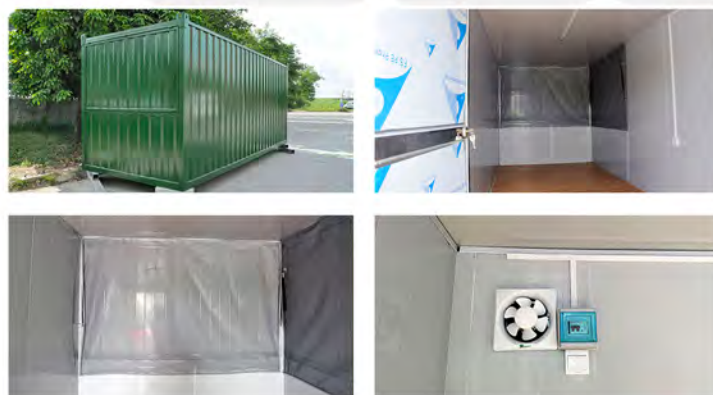


PRODUCT THREE VIEWS



CONTAINER CAFE

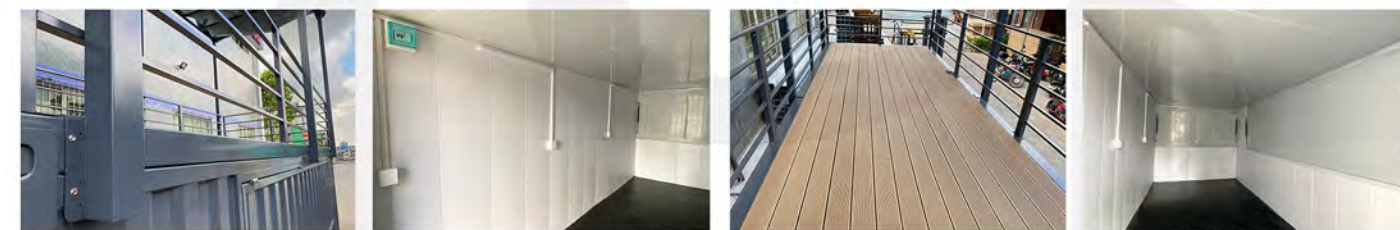
Country: United States
 Application: Commercial
 Box: Corrugated container
 Size: 5800*2250*2200mm
 Quantity: 28 sets
 Usable area: 13.05m²
 Building area: 26.1m²



SHOP

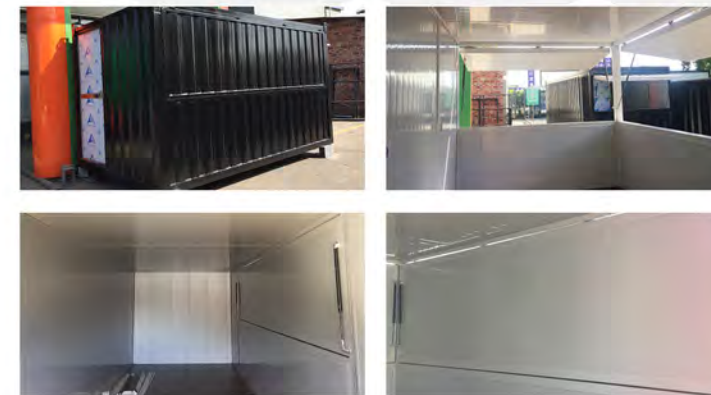
Country: Hong Kong, China
 Application: Commercial
 Box: Corrugated container
 Size: 5800*2250*2450mm
 Quantity: 20 sets
 Usable area: 13.05m²
 Building area: 13.05m²

PRODUCT CASE



COFFEE SHOP

Country: United States Box: Corrugated container Quantity: 23 sets
 Application: Commercial Size: 5800*2250*2200mm Usable area: 13.05m² Building area: 26.1m²



SHOP

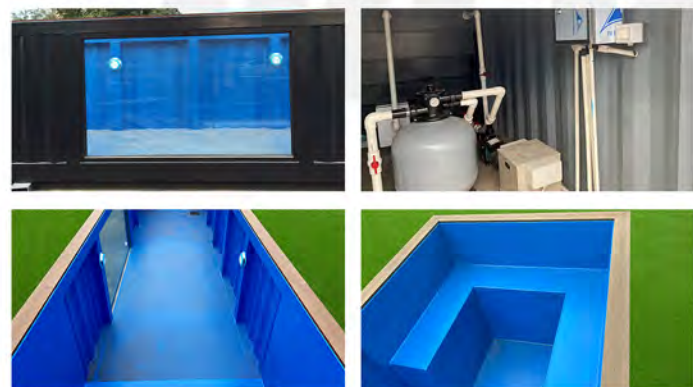
Country: Australia
 Application: Commercial
 Box: Corrugated container
 Size: 4000*2250*2250mm
 Quantity: 35 sets
 Usable area: 9m²
 Building area: 9m²

PRODUCT CASE



► ROLLING GATE CORRUGATED CONTAINER

Country: Middle East
 Application: Commercial
 Box: Corrugated container
 Size: 5800*2250*2200mm
 Quantity: 15 sets
 Usable area: 80m²
 Building area: 40m²

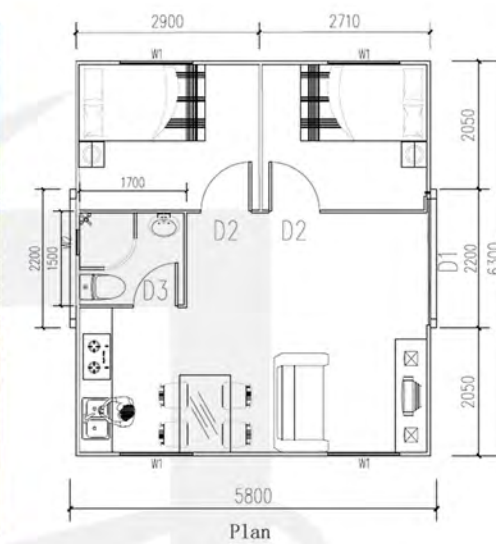


► CONTAINER SWIMMING POOL

Country: United States
 Application: Commercial
 Box: Corrugated container
 Size: 11800*2200*1800mm
 Quantity: 5 sets
 Usable area: 25.96m²
 Building area: 25.96m²

PRODUCT CASE

The Expandable container is easy to assemble and can be moved frequently, has enough usable area and spacious living space, all accessories are assembled at the factory, and the house can be folded to save space when transporting. When transported to its destination, it can be quickly and easily installed on the ground.

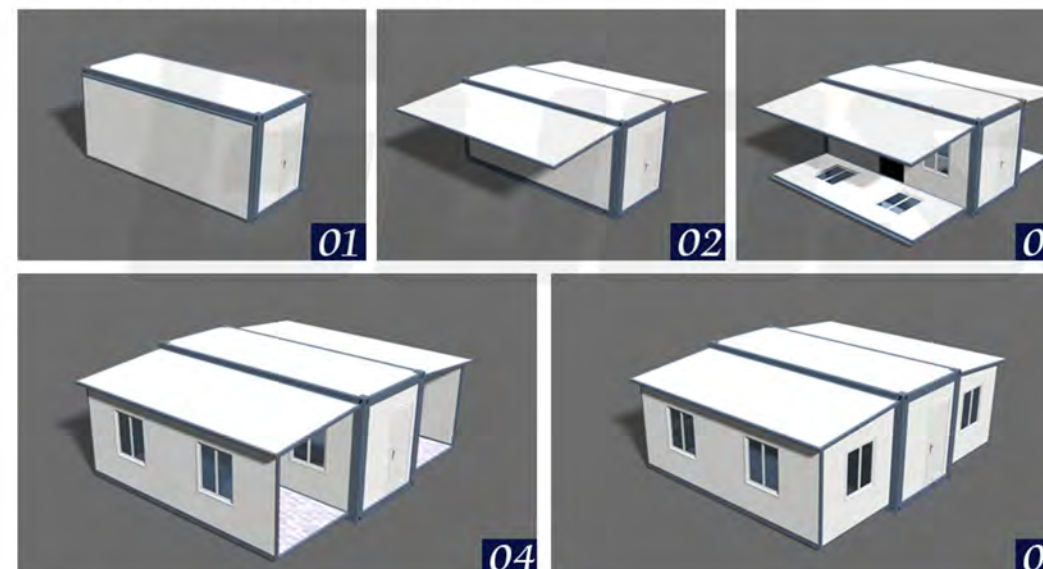


► BASIC PARAMETERS

Folding size: width 2200mm*length 5800mm*height 2500mm
 Expanded size: width 6300mm* length 5800mm* height 2500mm

- 1: Steel structure (galvanized + white paint)
- 2: 50mm EPS sandwich panel wall panel (double-sided 0.426mm steel plate)
- 3: 100mm insulating glass wool in the middle of the roof, 50mm EPS sandwich panels on both sides
- 4: 15mm bamboo glue floor + 3.5mm lock PVC floor glue
- 5: Aluminum alloy double-glazed upper-hung window
- 6: Exterior door double sliding glass door
- 7: EPS sandwich panel door with ball lock inside
- 8: Glass shower room with shower + toilet + washbasin with cabinet + mirror + towel rack + exhaust fan
- 9: Outdoor retractable canopy + porch light
- 10: Adjustable horizontal support + pulley
- 11: Electrical system (including LED lights, sockets, switches)
- 12: Including indoor plumbing systems

► INSTALLATION PROCESS



PRODUCT CASE

EXPANDABLE CONTAINER

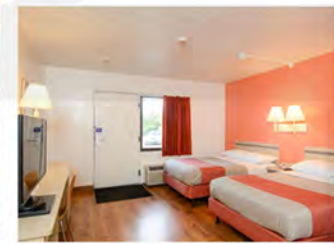


OVERSEAS HOTEL PROJECTS

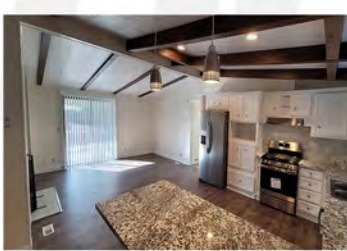
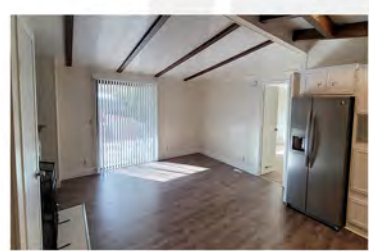
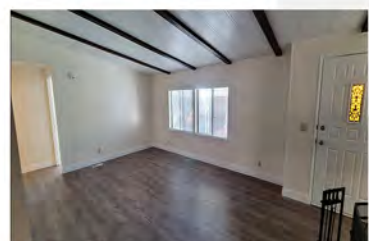


PRODUCT CASE

OVERSEAS HOTEL PROJECTS



OVERSEAS HOTEL PROJECTS



www.steelmarkhouse.com
<https://gdguose.en.alibaba.com/>

